

This information is subject to change. Not for navigation or legal pre-flight action.



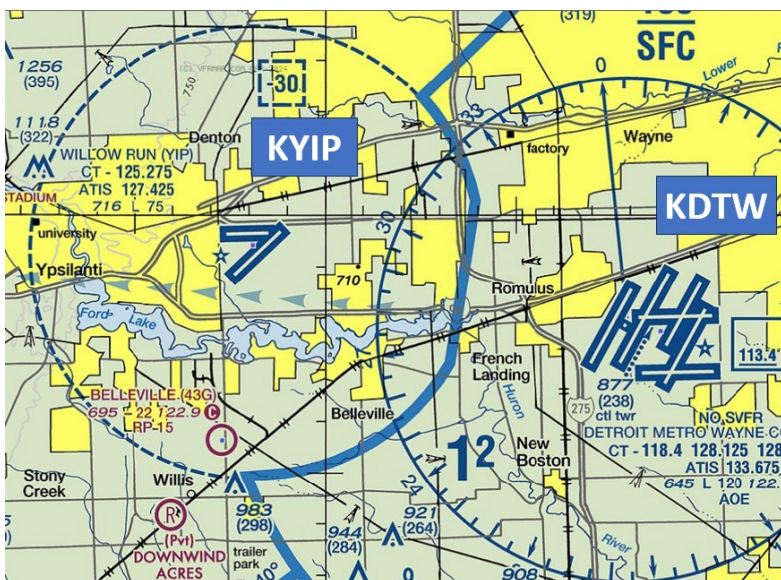
Willow Run Airport (KYIP) is a general aviation airport located on the eastern edge of the city of Ypsilanti, Michigan, and approximately eight miles west of the Detroit Metro Wayne County Airport (KDTW). It serves local and transient general aviation, business, air taxi and military operations. Combined with several flight schools located on the airport, the traffic mix makes for a wide range of pilot experience and aircraft performance.

A complex taxiway (TWY) system provides access to all businesses on the field, including the FBO and ramp areas which are in all four quadrants of the airport.



Open 0730L to 1700L - M through F
Business Phone 734-961-6845

The **airspace** at KYIP is **Class D** and underlies Detroit Class B airspace. (Refer to Sectional Chart.)



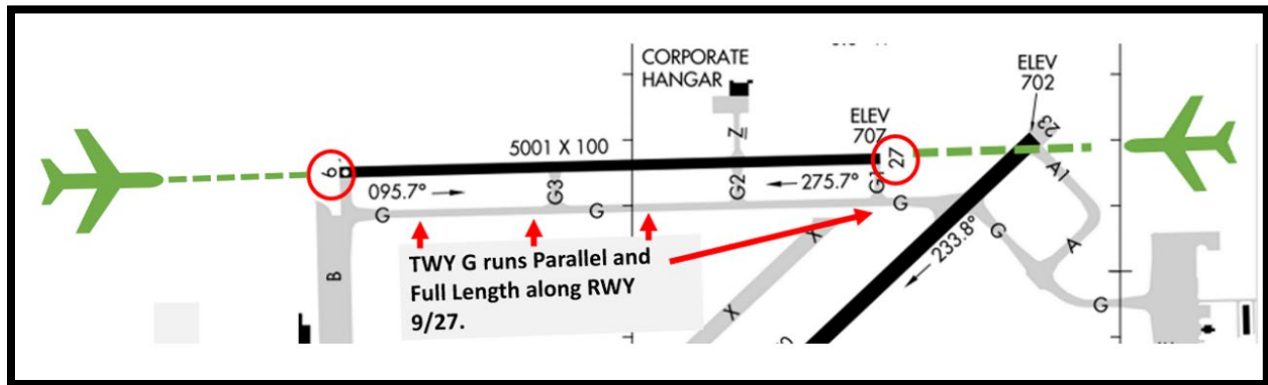
Cautions

Hot Spots

There are no Hot Spots at KYIP.

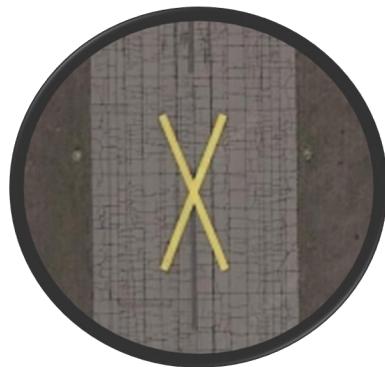
Wrong Surface TWY Takeoff and Landing See [Arrival Alert Notice](#).

- ✓ Be alert to TWYs that parallel RWYs. They have been mistaken for the adjoining RWY for both takeoff and landing.
- ✓ At KYIP, TWY G runs full-length and lies just south of RWY 9/27 (see illustration below).
- ✓ Always use the Airport Markings and Signage along with the published Airport Diagram to verify your position.
- ✓ Surface "Markings" for RWYs are always WHITE. Markings on surfaces that are not used for takeoff or landing are painted YELLOW.
- ✓ Additionally, RWYs are identified by a WHITE number painted at the approach end.



TWY G in relation to RWY 9/27

- ✓ Another potential for a Wrong Surface Landing exists on a closed surface marked with X's.
- ✓ This surface parallels and lies just north of RWY 5/23.



FROM THE KYIP TOWER CONTROLLERS

The following is local airport specific information that your TWR Controllers want to pass along.

General

- ✓ KYIP is home to two flights schools, MANG Aero Flying Club, ATP Flight School, and Crosswinds Aviation.

Traffic Patterns

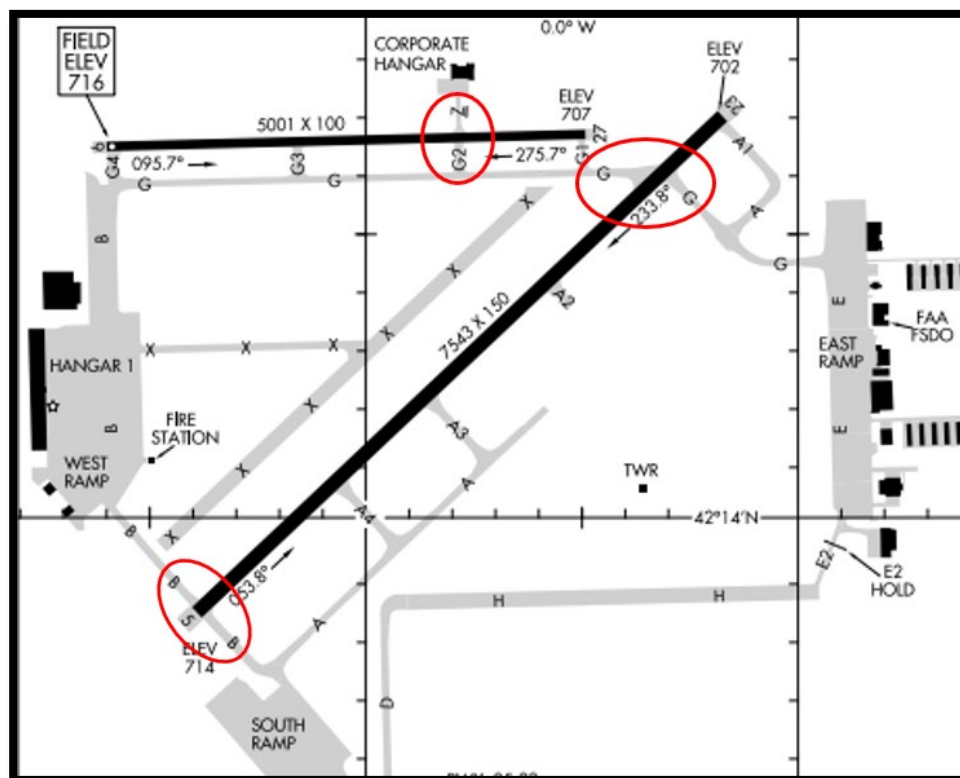
- ✓ TWR will assess the current hourly winds and based upon them they will conduct either left or right traffic on RWYs 5/23 and/or RWYs 9/27.
- ✓ Please fly a standard traffic pattern in accordance with the AIM and the FAA Airplane Flying Handbook unless otherwise approved or directed by the controller.
- ✓ Request early turns and non-standard traffic patterns from the controller.

Ground Control

- ✓ You can contact KYIP Ground Control on 119.975. They also monitor Clearance Delivery on 118.175.
- ✓ KYIP east, west, and south ramps are uncontrolled. All aircraft must contact Ground Control for instructions onto active TWYs.
- ✓ Readback of all hold short instructions are mandatory.

RWY Crossings

- ✓ RWY crossings take place at three locations.
 - TWY Z and G2 (RWY 9/27).
 - TWY G (RWY 23 approach end),
 - TWY B (RWY 5 approach end).



Takeoff/Departure

- ✓ TWR frequency is 125.275 (VHF) and 256.9 (UHF).
- ✓ When KYIP is departing RWY 23, intersection takeoffs at TWY G are available upon request.
- ✓ When pattern work is being conducted on RWY 9/27, departing RWY 23 from TWY G will be the most expeditious (upon request).



TWY G Intersection Takeoff RWY 23

- ✓ Distance remaining on RWY 23 at TWY G intersection is 6,700 ft.
- ✓ At an intersection, the white numerical RWY Designators may not be visible.
- ✓ Use the red RWY Holding Position markings/signs to identify the RWY.
- ✓ Before entering the RWY and when lined up on the RWY, **check** the Magnetic Compass and the Horizontal Situation Indicator (HSI), if installed, to **verify** that the aircraft is pointed in the **correct direction**.

Arrival/Landing

- ✓ Detroit Approach will normally sequence all IFR aircraft to RWY 5/23. YIP ATCT may change this RWY assignment and/or sequence due to VFR traffic in the KYIP Class D airspace, normally upon initial contact.
- ✓ VFR Practice Instrument Approaches are covered in Letter to Airmen: LTA-D21-32 which can be found in NOTAMS.
- ✓ **When inbound to RWY 9/27, ensure that you are lined up with the numbered RWY surface and not the parallel TWY.** (See Wrong Surface TWY Takeoff and Landing section above.)

Special Traffic (Military / Commercial / Helicopter, etc.)

- ✓ Helicopter takeoffs and landings are prohibited on the south ramp. Taxi only.

This information is subject to change. Not for navigation or legal pre-flight action. Refer to official pre-flight materials such as, but not limited to, NOTAMS, Airport Diagrams, Chart Supplement and VFR charts for the current airport-specific details.