



Dirección General de Aeronáutica Civil
CHILE

OCEANIC AIR TRAFFIC SERVICES

JORGE MORGADO CARVALLO

AIR TRAFFIC CONTROLLER

HEAD OCEANIC AREA CONTROL CENTRE



MAIN TOPICS

1. *INTRODUCTION*
2. *CHILEAN AREA SPACE*
3. *NATIONAL CONTROL UNITS*
4. *OACC STAFF*
5. *EQUIPMENT AND SOFTWARE UPDATE*
6. *CONTROL ROOM*



CHILEAN CONTROLLED AIRSPACE

FIRs



Data SIO, NOAA-U.S. Navy, NGA, GEBCO
Image © 2010 TerraMetrics
Image IBCAO
© 2010 Cnes/Spot Image

41°05'06.68" S 68°57'25.40" O elevación 238 m

©2010 Google

Alt. ojo 13949.13 km

AREA CONTROL CENTRES: 05

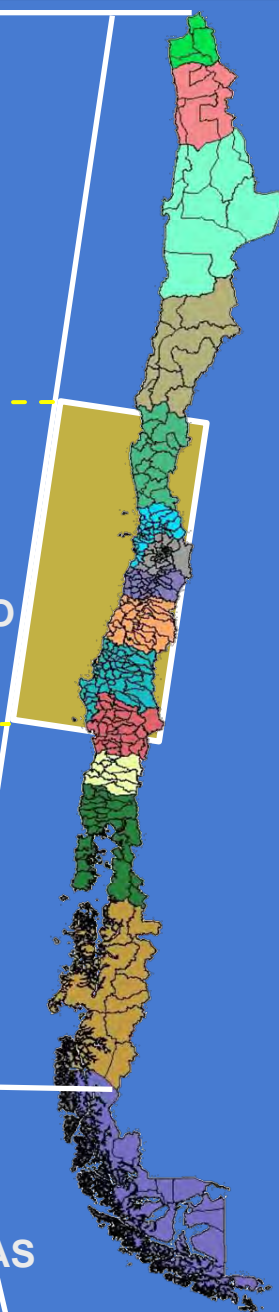
OCEANIC ACC
RNP 10

ACC
IQUIQUE

ACC
SANTIAGO

ACC
PUERTO
MONTT

ACC
PUNTA
ARENAS



Vertical Limits
2000'AGL/FL450

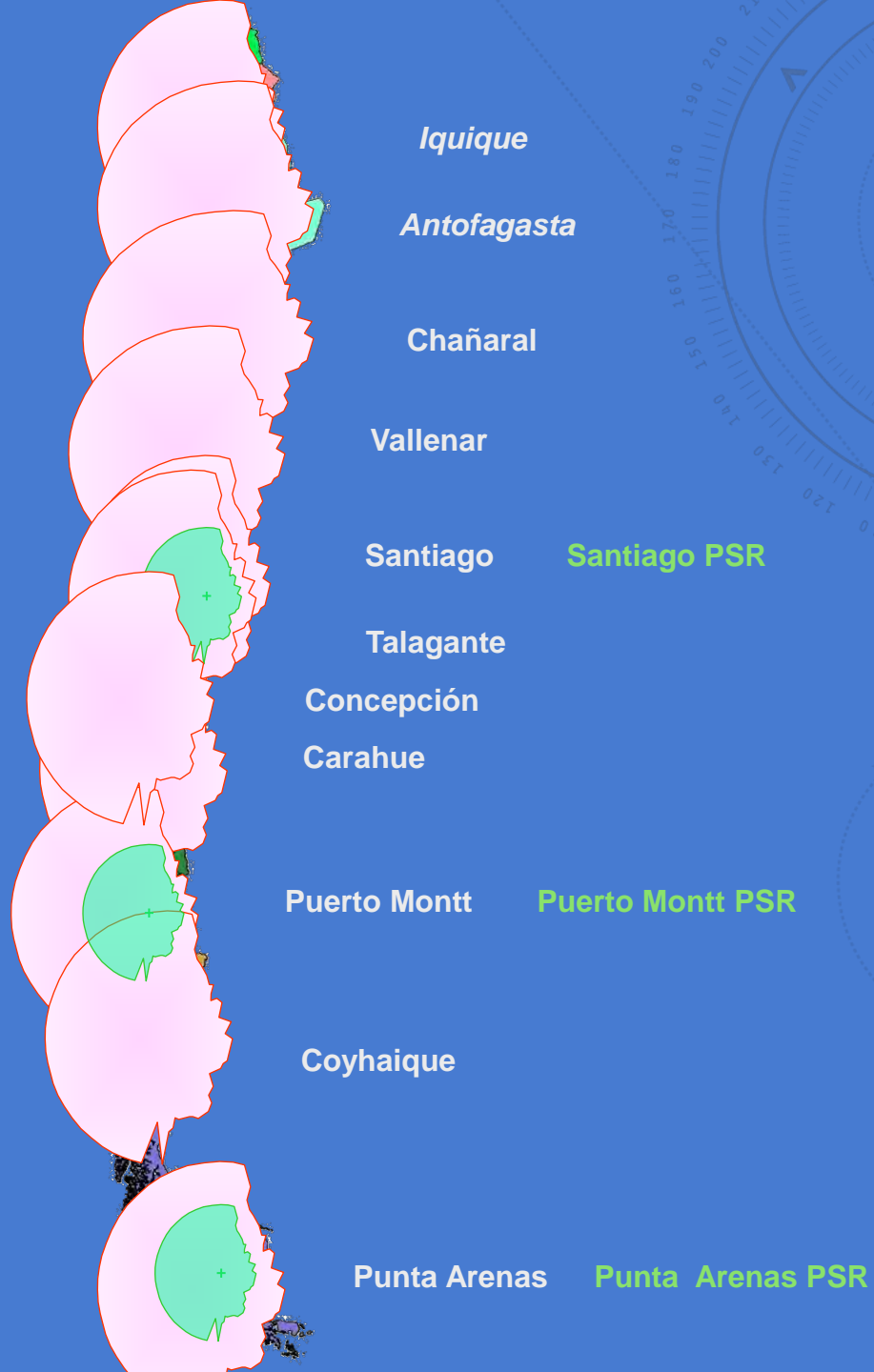
RADARS NET

3 *PSR*

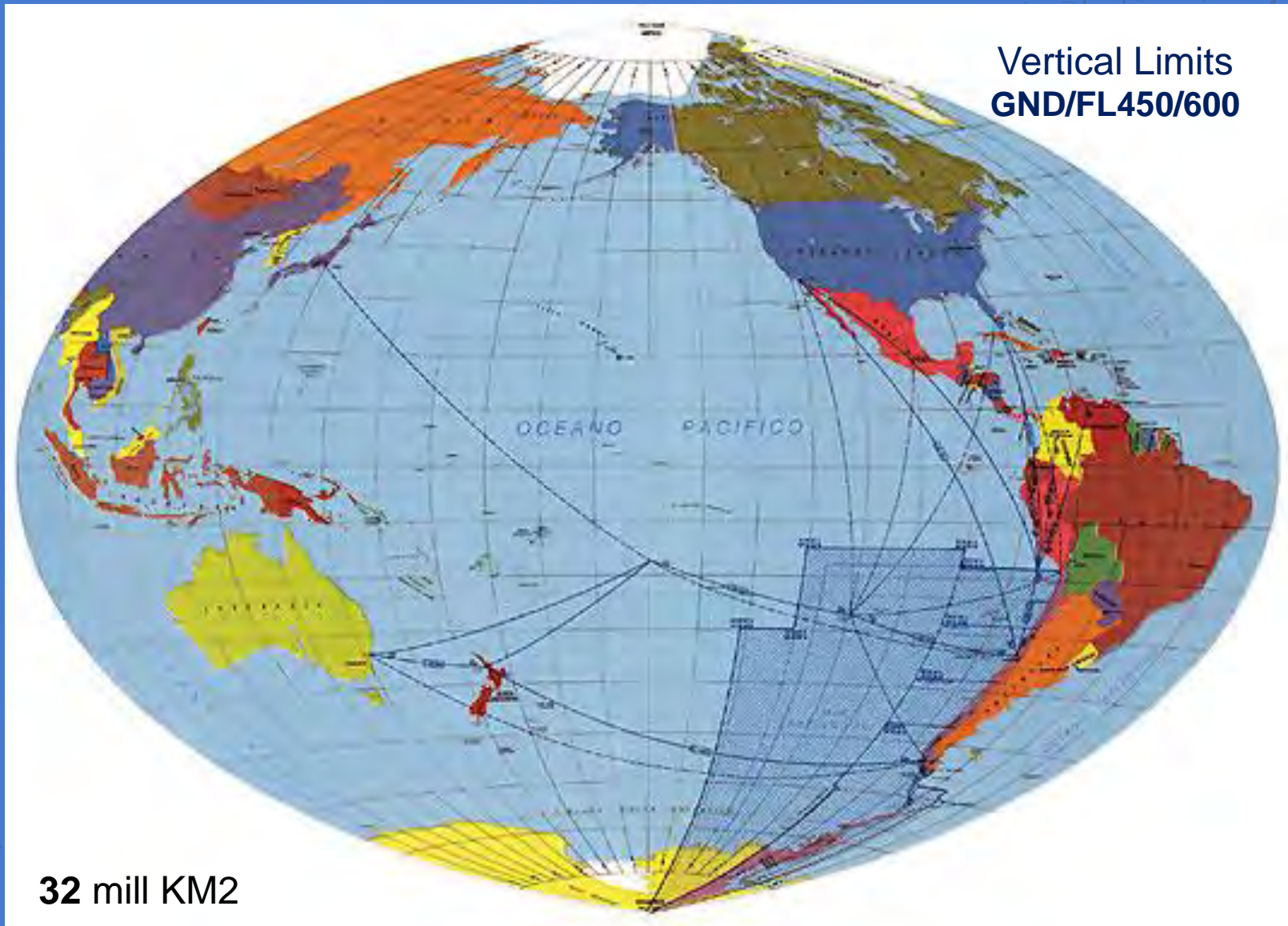
11 *MSSR*

Covers 95% of Chilean Territory

Ref.: AIP-CHILE VOL.I



CHILEAN CONTROLLED AIRSPACE



OCEANIC AREA CONTROL CENTRE STAFF

21 ATCOS

Mr. JORGE MORGADO

HEAD OACC

Mr. IVAN FERNANDEZ

HEAD OPERATIONS

16 ATCOS

24/7 ROTATION SHIFT

2 ATCOS

TRAINEES

1 ATCO

RETIREMENT PROCESS



EQUIPMENT AND SOFTWARE UPDATE APR 2025

EQUIPMENT AND SOFTWARE UPDATE
2 CONTROL POSITIONS THALES-TOPSKY IN UPDATE PROCESS
ADS-C CPDLC
AIDC UPDATE
OCEANIC ACC - IQUIQUE ACC FULL OPERATIONAL
OCEANIC ACC - LIMA ACC NEXT TO OPERATIONAL STAGE
SELCAL 32
CURRENT SYSTEM SUPPORTS
SATVOICE
CURRENT SYSTEM SUPPORTS

The screenshot shows a radio console interface with several sections:

- Top Row:** Frequency and mode indicators: 124.9 FA, 126.4XSD, EFG, FD, FI, CDI, C.
- Second Row:** RX TX, RX TX, OUT SERV, OUT SERV, OUT SERV, OUT SERV.
- Third Row:** 126.4 CU, 126.4XRO, C COORD, D, D COORD, E, E COORD.
- SELCAL TRANSMISSION:** A 6x6 grid keypad with letters A-F, G-H, J-M, P-Q, R-U, V-W, X-Y, Z-1, 2-3, 4-5, 6-7, 8-9, and DEL SEND buttons.
- Right Side:** A vertical column of buttons: SPLIT (Disabled), HOLD, TRANSFER, CONF, LOOP LVL, PICK-UP, IDA, TEL-SPKR, BRIEFING, and a status bar showing 'AL Page 6' and '01:30'.
- Bottom Right:** A digital clock showing '17:46:18' and the date '20/03/2025', along with the SITT logo.

The screenshot shows a flight information display (FID) with a list of flights and a keyboard overlay:

Flight No	Tail No
B8168	B8168
SIA960	9V-SYH
DLH790	DAIXF
SIA34	9VSGF
HVN772	VNA863
QTR946	A7AND
SIA917	9VSCK

Additional interface elements include:

- Buttons for 'All' and 'Sector'.
- A 'CALL' button.
- A 'Search' input field.
- A 'Clear All' button.
- A full QWERTY keyboard overlay at the bottom.



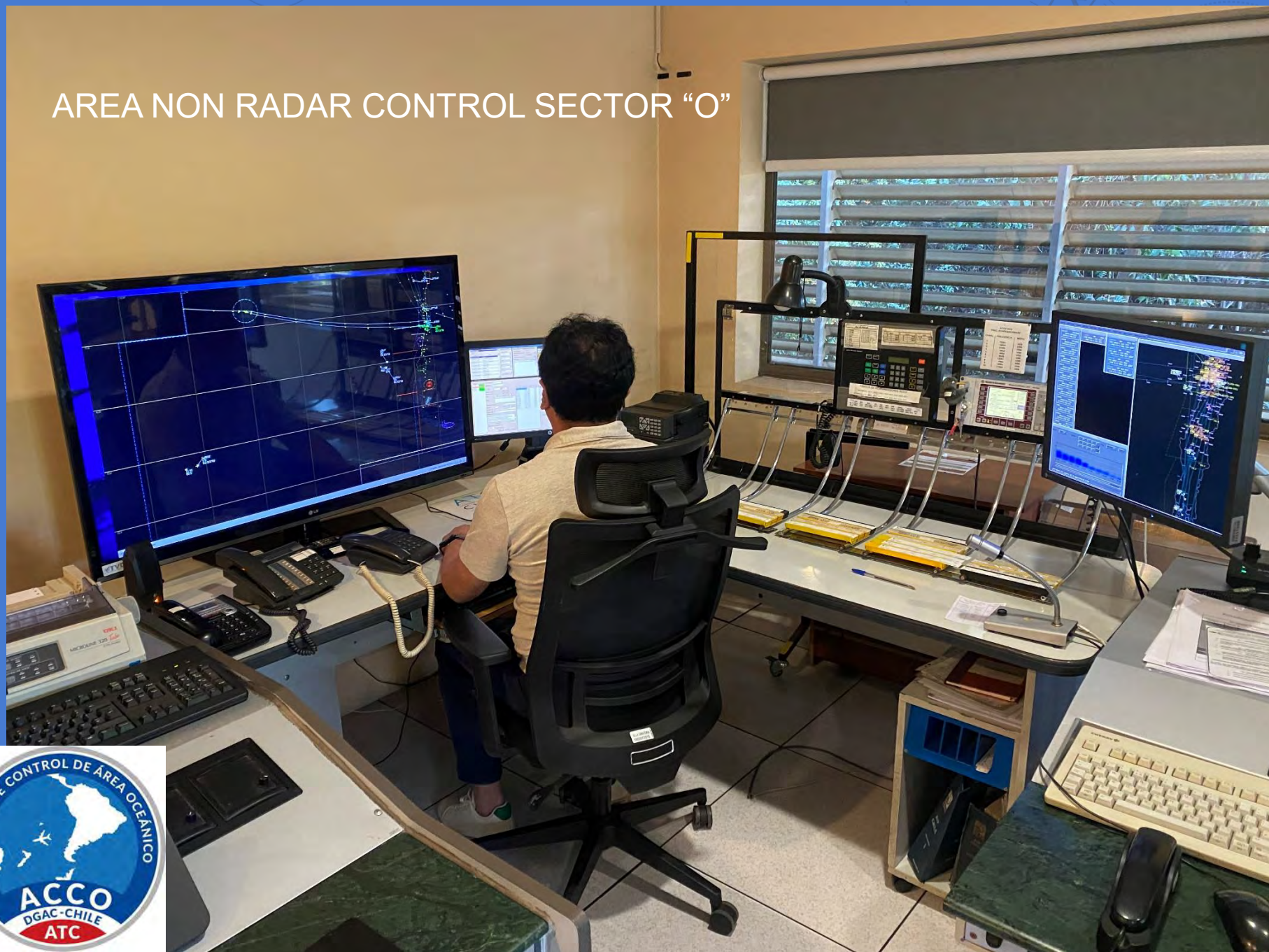
OCEANIC AREA CONTROL CENTRE



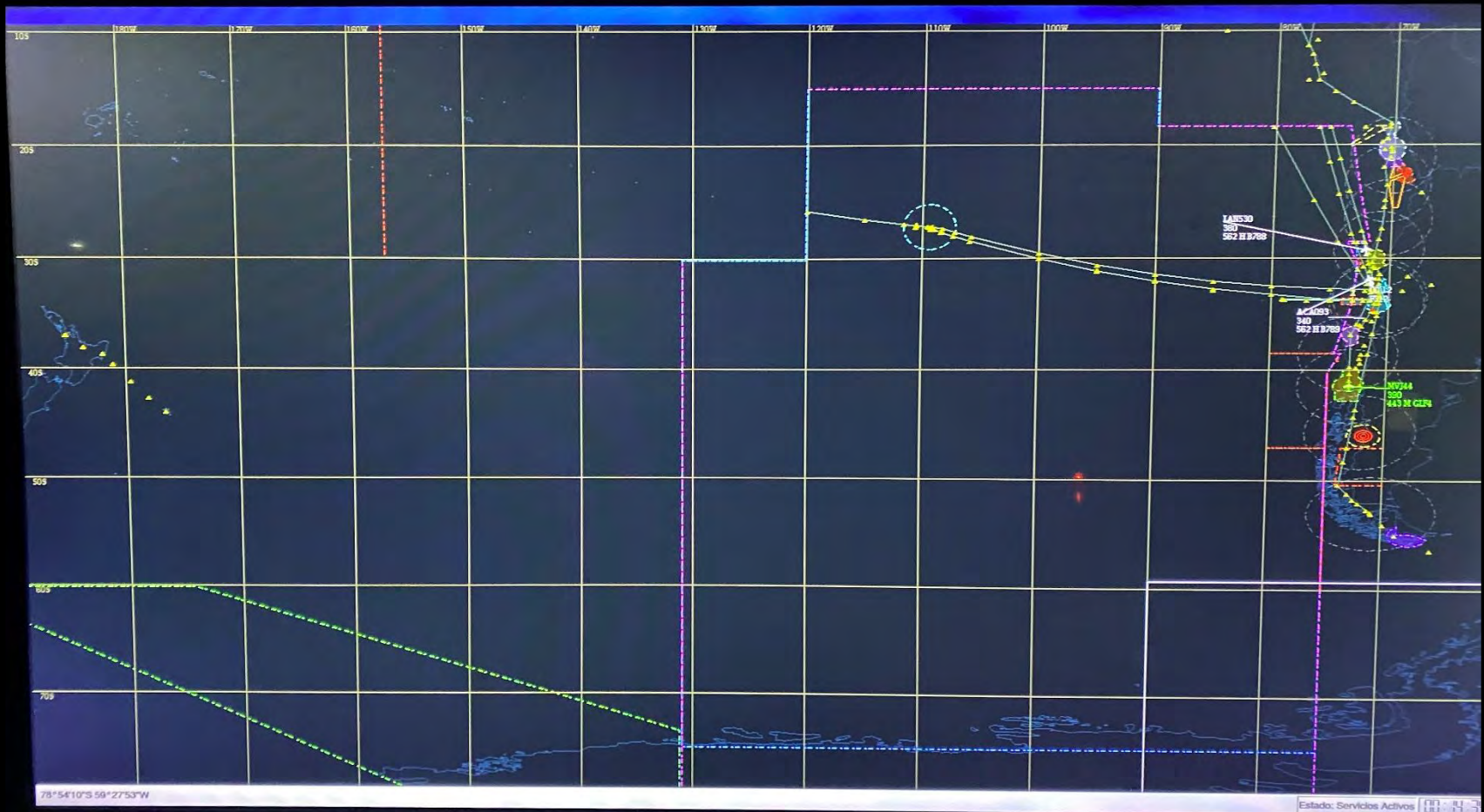
RADAR AND NON RADAR SECTOR "N"



AREA NON RADAR CONTROL SECTOR "O"



VITRO SCREEN: DEVICE TO UPDATE FLIGHT TRACKS DEVELOPED IN CHILE



VITRO TRACKS IMAGES



TOPSKY "NOVEMBER" RADAR AND NON RADAR CONTROL SECTOR

Tracks ASD Bg Data Link Flight Data -000- Flight Lists Information Messages 0-81 QUEUE EMPTY 03.29.24

INC/OVER FPL

JAT498 0201 0333
S6811 H0449 I GPRH SCEL
A20H HNS 232 I 0411

757 0948
1 SAEZ
1939

632 0827
1 SAEZ
0809

0826 0841
1 SCEL
1034

1820 0850
1 TL SCEL
5 1224

0713 0730
081 SCEL
0 0929

0713 0736
101 SCEL
40 0914

0556 0551
0 PTO SCEL
09 0806

0748 0738
101A SCEL
215 0952

Active FPL

DAL146 360 0147 0854
5336 H085 I SCEL KAT
L A359 HNS 0147 0357 RTE

LPE2375 350 0305 0406
5604 H0439 I SPJC SAEZ
L A320 HNS 0210 0403 RTE

UAL846 320 0155 0921
5339 H080 I SCEL KAH
0753 HNS 0155 0409 RTE

AAL200 300 0215 1041
0470 H0498 I SAEZ XOLA
077H HNS 0039 0405 RTE

AAL947 360 0218 0949
5344 HNS I SCEL KJFK
0772 HNS 0218 0405 RTE

LINE1446 360 0223 0447
5337 H076 I SCEL SGOJ
A319 HNS 0223 0444 RTE

SKOS802 340 0227 0332
5341 H077 I SCEL SPJC
A20H HNS 0227 0445 RTE

AAL996 360 0302 1045
0360 H0492 I SAEZ KDFH
0772 HNS 0130 0451 RTE

DAE1557 350 0331 0833
0853 H0480 I SCEL SCEL
0763 HNS 0210 0539 RTE

Planning Window

CREATE MODIFY TERMINATE ESTIB COPY SPLIT
SEARCH EXEC NEXT RESET VALID STEREO

ORIG CALLSIGN SSR FB ET BR / TYPE ITC
FPL LAN532 5346 3 D1 0780 M

CORR/APP NAV COUNT

SORTS/GRS 1435H0MZY

SUBR EQUIP TAS PFL OP-CODE
LBDIV1 H095 300

ADPR ETD DGR STD AGR STAR EET ALTN
SCEL 0319 17 DONTI48 KJFK 0937 KERN

ROUTE

DONTI48 DONTI U.780 SORTA/H0497/380 U.780 ULBAS U0437 ALTB U0779
28000/H048/H330 Y329 28V ARCA JAZZ1 ARJ 300AH Y291 CHIEZ DCT DXX OCT
METRO DCT CL385 DCT SR J121 SIC CANRM

OTHER INFORMATION

PRV/A181018Z NAV/RWDT/EZ1 DAT/IFANS SUR/2688 DOF/221111 REC/C08H
EZY/GFZ0847 SP1H0209 SFG0355 B5DN0439 H0719507 H080618 H078053
K2M04722 H040762 K2308095 K2C0830 K2M0925 S1/CFHO CODE/CBS20

CL BRN ETD BRK LTR COFL
360 BRP 0210 SORTA 0524

SECTORS STATUS COORD/LAN FIR COORD FHT
LBDCH CONTROL/D NO FIR KERN

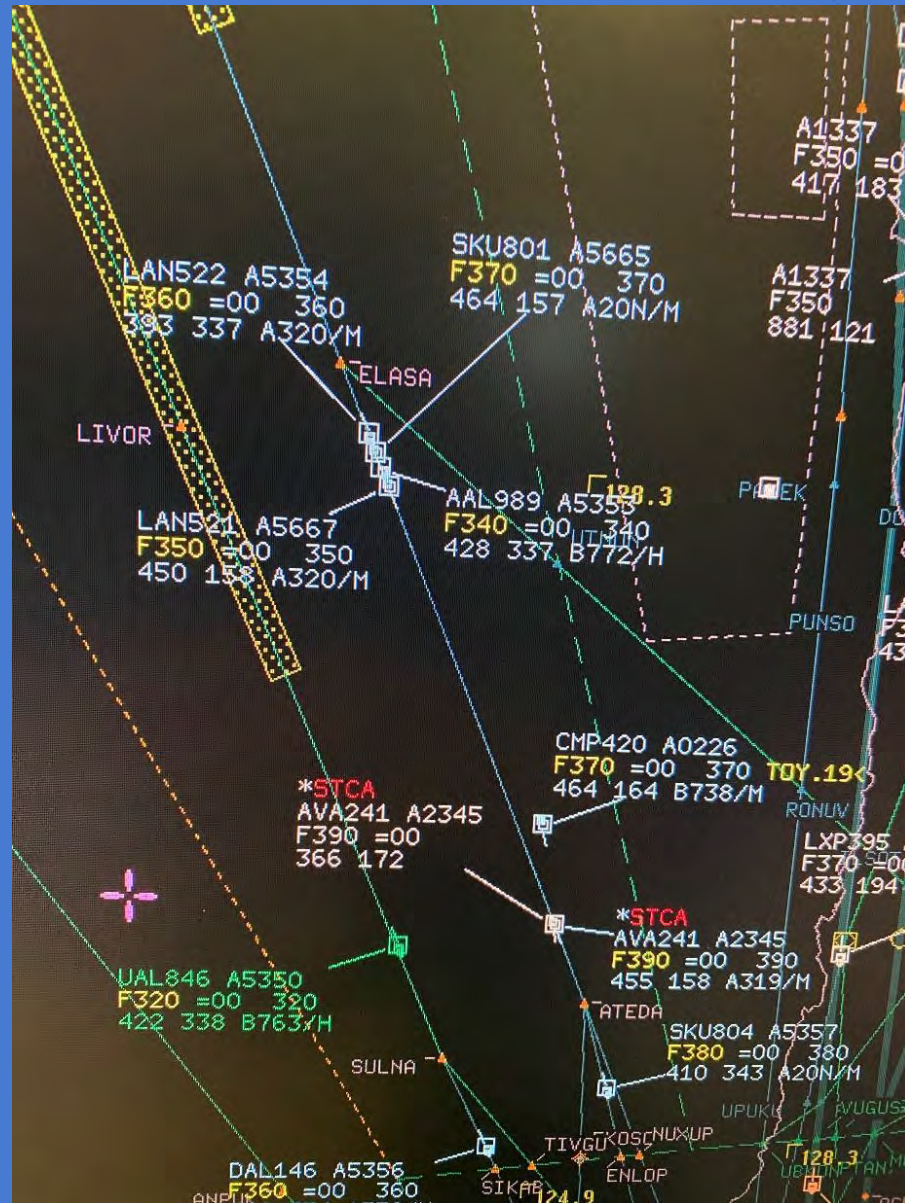
FLIGHT PLAN HAS BEEN UPDATED AUTOMATICALLY

Points - List Of Points

POINT	SORTA	BORIS	AKPOK	HOPHA	VATRA	SEKAS	BARNA	LIVOR	ISPEL	SORTA
CEL	174	360	360	360	360	360	360	360	360	360
EFL	0236	0236	0341	0349	0350	0411	0438	0500	0524	0524
POINT	SORTA									
CEL	360									
EFL	0829									
POINT										
CEL										
EFL										



REGULAR NIGHT TRAFFIC OPERATIONS



QUERIES??



JORGE MORGADO

HEAD OCEANIC AREA CONTROL CENTRE

JMORGADOC@DGAC.GOB.CL

