

# THE WORLD'S FIRST PURPOSE-BUILT COMMERCIAL SPACEPORT

FAA-LICENSED HORIZONTAL & VERTICAL LAUNCH SITE | 18,000 ACRES ADJACENT TO U.S. ARMY WHITE SANDS MISSILE RANGE  
 6,000 SQ MILES OF RESTRICTED AIRSPACE | 12,000 X 200 FT RUNWAY | 340 DAYS OF SUNSHINE & LOW HUMIDITY

## MISSION / VISION

- Actively promoting and assisting public and private-sector infrastructure development to attract new industries and businesses is a primary goal of Spaceport America.
- Tenants who lease space have the freedom to design launch sites and facilities at Spaceport America which best serve their missions.
- Spaceport America provides access to both the National Airspace System (NAS) as well as 6,000 miles of restricted airspace from surface to unlimited. Because of this, a “quiet zone” consisting of minimal commercial aviation traffic offers reinforced privacy for sensitive projects while allowing the safe testing of new designs with minimal regulatory delays.
- The vast size of Spaceport America allows tenants to greatly streamline the process of project development to execution. As a result, tenants have the ability to engineer, manufacture, test and launch all at one location.

## LONG-TERM PLAN

- New infrastructure:
  - » Hangar Development
  - » Road Infrastructure Improvements
  - » Broadband Fiber Optic Improvements
- Working on a FAA Reentry License
- Planned Multi-use building
- Current discussions for Inland Hypersonic Corridors
- Increase domestic & international customer interest
  - » Expand customer base interested in testing & development

## NEW FEATURES

- 50 FT. Launch Rail (Fall/Winter of 2023)

## ON-SITE TENANTS

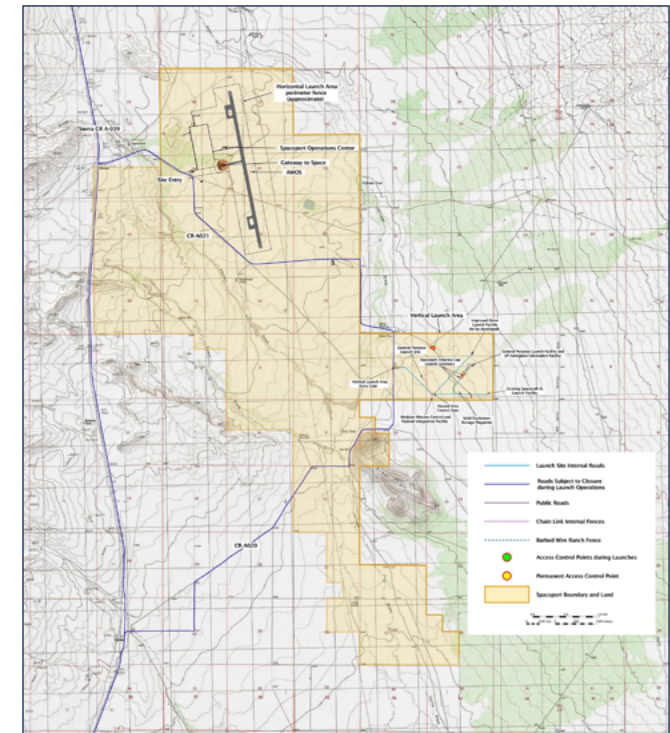
- Virgin Galactic, HAPS Mobile/AeroVironment,
- UP Aerospace, SpinLaunch, Prismatic, Ltd./BAE
- Frequent customers include EXOS Aerospace and Swift Engineering

## SPACEPORT ACCESSIBILITY

- Paved roads leading to the spaceport
- Public access roads outside of the spaceport that can be accessed by the public for launch viewing
- Runway for aircraft

## LOCATION ADVANTAGE

- Spaceport America is under White Sands Missile Range's restricted airspace
  - » Spaceport America can use this airspace
  - » Managed by the U.S. Army, White Sands Missile Range boasts the largest restricted DoD airspace in the country
  - » 2 different rates depending on use (DoD or Non-DoD)
- Ability to conduct UAS flight testing in restricted airspace
- 24-hour fire, emergency and EMS services on-site



## YOUTUBE VIDEO LINKS

- [Spaceport America Home](#)
- [Spaceport America Overview](#)