



EXPLORATION SPACEPORT

@ Space Coast Regional Airport

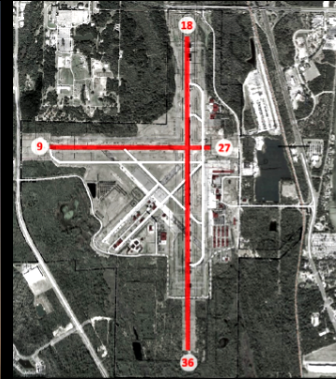
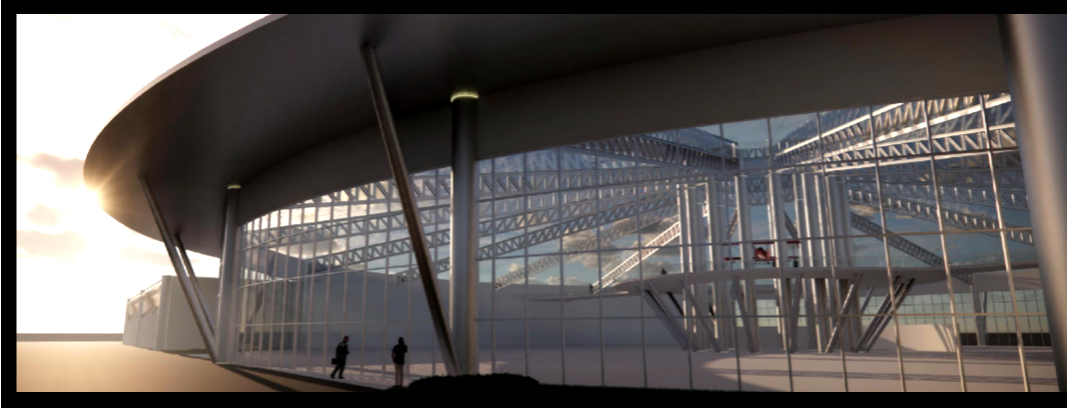
Director: Kevin Daugherty, A.A.E.

Address: 51 Bristow Way, Titusville, FL 32780

Phone Number: (321)-267-8780 www.explorationspaceportfl.org



Federal Aviation
Administration



ABOUT THE SPACEPORT

- Licensed by the FAA in 2020 for horizontal launch/landing activities
- FAA Contract Air Traffic Control Tower
- Runways 18/36 (7320' x 150' grooved) and 9/27 (5001' x 100')
- Onsite Aircraft Fire Rescue
- Instrument Landing System

MISSION

- To provide unique opportunities for diverse aerospace business growth, unparalleled customer experiences, and a destination for global aerospace research, testing, assembly, and potential launches.

SPACEPORT HIGHLIGHT

- 1,500+ developable acres
- Development of 1.9 million square feet of leasable space
- Future "point-to-point" launch terminal

MASTER/LONG-TERM PLAN

- Rehabilitation of Runway 18/36 and Safety Area Enhancements
- Extension of Challenger Avenue to S.R. 407
- Replacement of current Air Traffic Control Tower
- Taxiway A Reconstruction and Extension
- Development of 1.9 million square feet of build-to-suit space
- Horizontal launch/landing; future "point-to-point" excursions
- FTZ (Foreign Trade Zone) 136

NEW FEATURES OF THE SPACEPORT

- Development of new facilities that may contain clean rooms, high bays, and SCIFs, as well as capabilities for manufacturing, assembly, research and development, and flexible office space

ON-SITE TENANTS

- Space Perspective Inc.
- 321 Launch; USATS; Space Coast Executive Jet Center; MAG Aerospace; Professional Aircraft Accessories; Space Coast Innovation Park
- In most instances, utilities such as water, sewer, cable, and electricity are available
- New development is tenant-driven and reviewed on an individual basis
- Land is leased to the tenant, who is responsible for vertical improvements and facility ownership

LOCATION ADVANTAGE

- Spaceport Territory tax-related and fiscal benefits
- Close proximity to major arteries - I-95, U.S. 1, S.R. 528, S.R. 407, and S.R. 405 (NASA Causeway)
- FEC Railway
- Within one hour of several international airports
- 6 miles from Kennedy Space Center
- 8 miles from Port Canaveral
- Foreign Trade Zone 136 (duty-free trade, shipping, etc.)

- Florida weather provides opportunities for year-round outdoor activities
- Pristine beaches
- Indian River Lagoon (boating, fishing)
- 40 minutes from Orlando and its legendary theme parks and amenities

SPACEPORT ACCESSIBILITY

- Multi-modal transportation gateway, including roadways and highways, railways, maritime, air travel, and space capabilities

