

HUNTSVILLE INTERNATIONAL AIR & SPACEPORT

CEO: Luther “Butch” Roberts Jr., A.A.E.

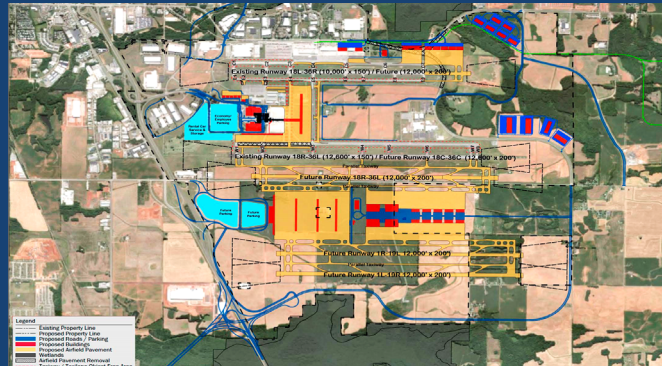
1000 Glenn Hearn Boulevard, Huntsville, Alabama 35824

Phone Number: (256) 772-9395

flyhuntsville.com/spaceport



Federal Aviation
Administration



BACKGROUND

- Our mission is to provide quality multi-modal transportation services to a diverse regional customer base and to stimulate the economic growth and development of the Tennessee Valley region.
- Located in Rocket City, USA
- HSV is the first commercial airport in the U.S. licensed by the FAA to land a commercial space vehicle.
- Voted #1 Small Airport in the United States in 2024 Newsweek Poll

SPACEPORT HIGHLIGHTS

- First and only commercial airport to be licensed as a reentry site to land commercial space vehicles.
- Community presence of US top 5 aerospace & defense companies: Lockheed Martin, Northrop Grumman, The Boeing Company, General Dynamics, and Raytheon.
- Easy access to payload testing services.
- 24/7 Federal weather data by National Weather Service Huntsville office.
- Facilities include over 400,000 square feet of hangar space and parallel runways with the West Runway at 12,600 linear feet representing the second longest runway in the southeast United States.
- 4,000-acre industrial park with land available for lease and development attached to utilities (water/wastewater, electricity, natural gas, and fiber optics).

MASTER/LONG-TERM PLAN

- 8,000+ acre campus allows for future expansion.
- Planned construction of three additional 12,000 ft. parallel runways.

NEW SPACEPORT FEATURES

- Licensed in 2022 to support horizontal reentry and landing of the Sierra Space DreamChaser commercial space vehicle.
- New HUVR Center (Huntsville UAS Vertical Research) for UAS/CUAS research, development, and training.
- HSV selected by the FAA to host one of five UAS Detection and Mitigation Research Program Sites in the U.S.
- New \$12 million general aviation terminal opening November 2024.

ON-SITE TENANTS

- Defense and Aerospace Firms
 - » Blue Origin, The Boeing Company, Northrop Grumman, SES (Science & Engineering Services, LLC), Tyonek
- Logistics
 - » DSV, FedEx, Kerry Apex, UPS
- General Aviation
 - » Signature Aviation
- On-Site Amenities
 - » U.S. Customs & Border Protection
 - » Foreign Trade Zone No. 83
 - » Sunset Landing Golf Course
 - » Four Points by Sheraton hotel

LOCATION ADVANTAGE

- Huntsville's strong economy, extensive customer base, and industrial capacity keep the community at the top of the list for new economic development and defense projects.

- Proximity to Redstone Arsenal: home to 70 Federal agencies including the U.S. Army, the FBI, and NASA-Marshall Space Flight Center research and development agencies for aerospace and aviation.
- Airport 24/7 ARFF coverage of fire, EMS, and public safety services.
- Onsite Airport Public Safety Department providing 24/7 ARFF, law enforcement, and emergency medical services.
- Mild, temperate climate in the foothills of the Appalachian Mountains and adjacent to the Tennessee River.

SPACEPORT ACCESSIBILITY

- Huntsville International Airport is located in Alabama's largest city with service by American Airlines, Delta Air Lines, United Airlines and Breeze Airways.
- Parallel 12,600- and 10,000-foot runways with 5,000-foot separation allows simultaneous operations.
- Paved public roads adjacent to east, west, north and south of runways provide easy viewing access.
- Adjacent to I-565 interstate highway.
- Category 6 aircraft accessibility.
- 2 million square feet of ramp, established apron, and hangar space.
- Signature Aviation FBO provides general aviation and fueling amenities.
- Rail spur to Norfolk Southern mainline providing connectivity for international and domestic rail traffic.

