

U.S. DEPARTMENT OF TRANSPORTATION
FEDERAL AVIATION ADMINISTRATION
CERTIFICATE OF WAIVER

ISSUED TO

Dong Won Lee
Responsible Party: Dong Won Lee
Waiver Number: 107W-2024-00474

ADDRESS

425 Chalan San Antonio PMB 1014
Tamuning, GU 96913

This certificate is issued for the operations specifically described hereinafter. No person shall conduct any operation pursuant to the authority of this certificate, except in accordance with the standard and special provisions contained in this certificate, and such other requirements of the Federal Aviation Regulations not specifically waived by this certificate.

OPERATIONS AUTHORIZED

Small Unmanned Aircraft System (sUAS) operations higher than 400 feet above ground level (AGL), when not within a 400 foot radius of a structure.

LIST OF WAIVED REGULATIONS BY SECTION AND TITLE

14 CFR § 107.51(b)—Operating limitations for small unmanned aircraft (sUA) - Altitude

STANDARD PROVISIONS

1. A copy of the application, made for this certificate, shall be attached to and become a part hereof.
2. This certificate shall be presented for inspection upon the request of any authorized representative of the Administrator of the Federal Aviation Administration or of any State or municipal official charged with the duty of enforcing local laws or regulations.
3. The holder of this certificate shall be responsible for the strict observance of the terms and provisions contained herein.
4. This certificate is nontransferable.

NOTE—This certificate constitutes a waiver of those Federal rules or regulations specifically referred to above. It does not constitute a waiver of any State law or local ordinance.

SPECIAL PROVISIONS

Special Provisions 1 to 17, inclusive, are set forth on the attached pages.

This Certificate of Waiver is effective from June 12, 2024, to June 11, 2026, and is subject to cancellation at any time upon notice by the Administrator or an authorized representative.

BY DIRECTION OF THE ADMINISTRATOR

Adam Vetter
Tactical Operations Manager
FAA Western Service Center

SPECIAL PROVISIONS ISSUED TO
Dong Won Lee

General.

The FAA's Flight Standards Service has reviewed your application to ensure compliance with the requirements of 14 CFR § 107.200 and § 107.205. Pursuant to these authorities, the Administrator finds that the proposed sUAS operation can be conducted safely under the provisions of this Certificate of Waiver (Waiver) as listed below because you have established adequate mitigations for risks involved with operating your sUAS in the manner you described. Adherence to the provisions of this Waiver establishes the required level of safety within the national airspace system.

The Administrator may cancel this Waiver at any time. As a general rule, this Waiver may be canceled when it is no longer required, there is an abuse of its provisions, or when unforeseen safety factors develop. Failure to comply with any provision listed below is a violation of the terms of this Waiver and will serve as justification for cancellation.

List of Regulations Waived by Section and Title. The following regulations are waived:

14 CFR § 107.51(b), Operating limitations for small unmanned aircraft - Altitude, is waived to allow sUAS operations higher than 400 feet AGL, not to exceed 800 feet AGL.

No part of this Waiver will function as an airspace authorization under 14 CFR § 107.41. The FAA's Air Traffic Organization responds directly to such requests. The FAA LAANC system cannot be used for waived operations.

Common Special Provisions: The Responsible Person is directly responsible for safety of operations conducted under this Waiver and will ensure the Remote Pilot in Command (PIC), manipulator of the controls, and Visual Observers (VO)¹ comply with all provisions of this Waiver.

1. The Responsible Person listed on the Waiver is responsible to the FAA for the safe conduct of the operations. Prior to conducting operations that are the subject of this Waiver, the Responsible Person:
 - a. Must ensure the PIC, manipulators of the controls, and VO are informed of the terms and provisions of this Waiver and the strict observance of the terms and provisions herein;
 - b. Must ensure the PIC, manipulators of the controls, and VO are informed of, and familiar with, Part 107 regulations; and
 - c. Evidence of the above (a and b) must be documented and must be presented for inspection upon request from the Administrator or an authorized representative;
2. This Waiver must not be combined with any other waiver(s), authorization(s), or exemption(s) without specific authorization from the FAA;
3. The FAA has the authority to cancel or delay any or all flight operations if the safety of persons or property on the ground or in the air are in jeopardy, or there is a violation of the terms of this Waiver;

¹ Title 14 CFR § 107.3 defines the term "visual observer." Any VO participating in operations conducted under this Waiver must meet the requirements listed in § 107.33 throughout the duration of flight operations.

4. A copy of this Waiver must be accessible and available to the PIC at the ground control station during sUAS operations that are the subject of this Waiver;
5. The Responsible Person listed on this Waiver must maintain a current list of pilots by name and remote pilot certificate number used in operations under this Waiver. This list must be presented for inspection upon request from the Administrator or an authorized representative;
6. The Responsible Person listed on this Waiver must maintain a current list of sUA by registration number(s) used in operations under this Waiver. This list must be presented for inspection upon request from the Administrator or an authorized representative;
7. For the purposes of this Waiver, direct participants are the PICs, persons manipulating the controls, VOs, and any persons whose involvement is necessary for safety of the sUAS operation. All other persons are considered non-participants;

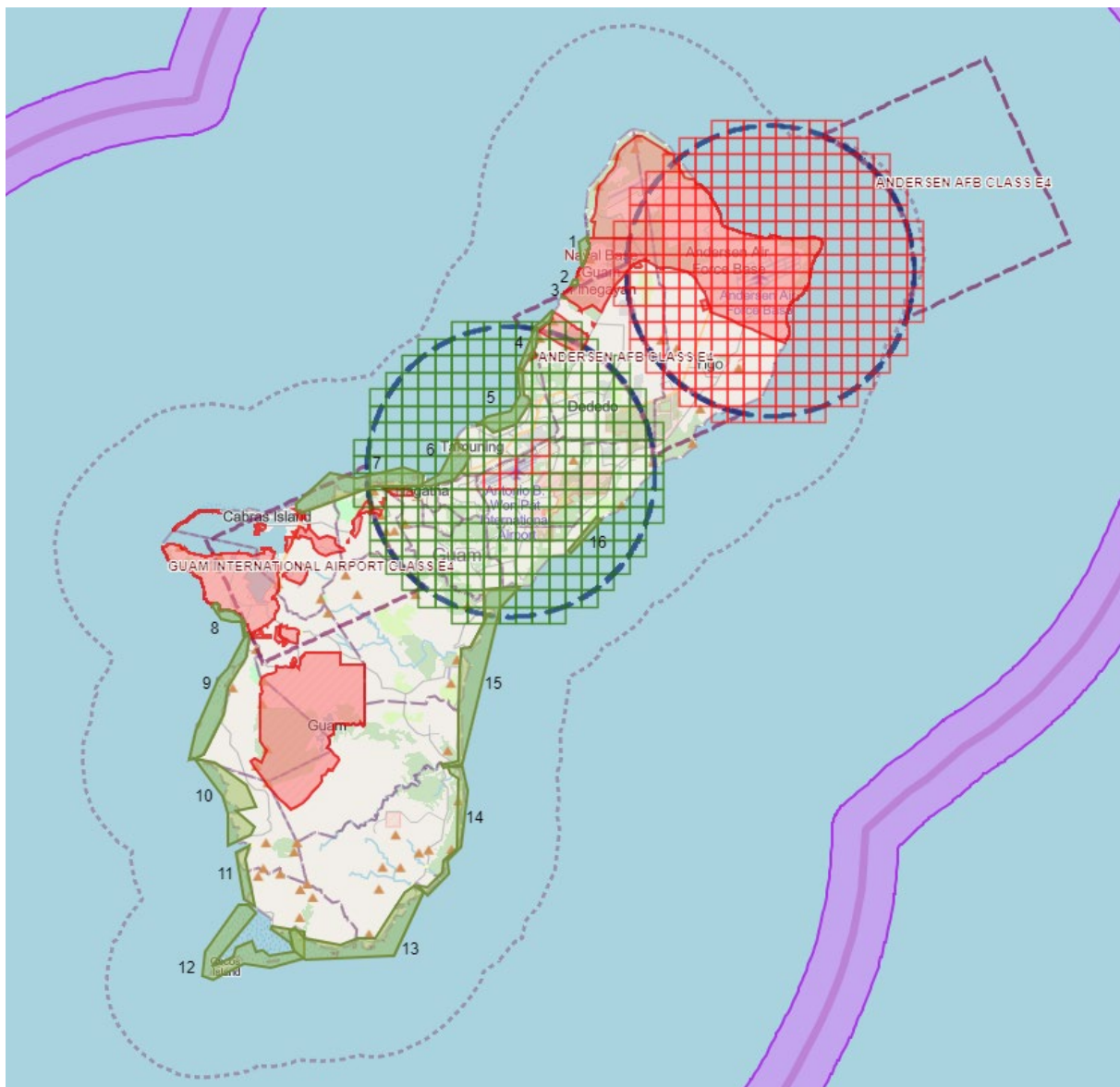
Operations higher than 400 feet AGL Special Provisions: sUAS operations may be conducted above 400 feet AGL, not to exceed 800 feet AGL, provided:

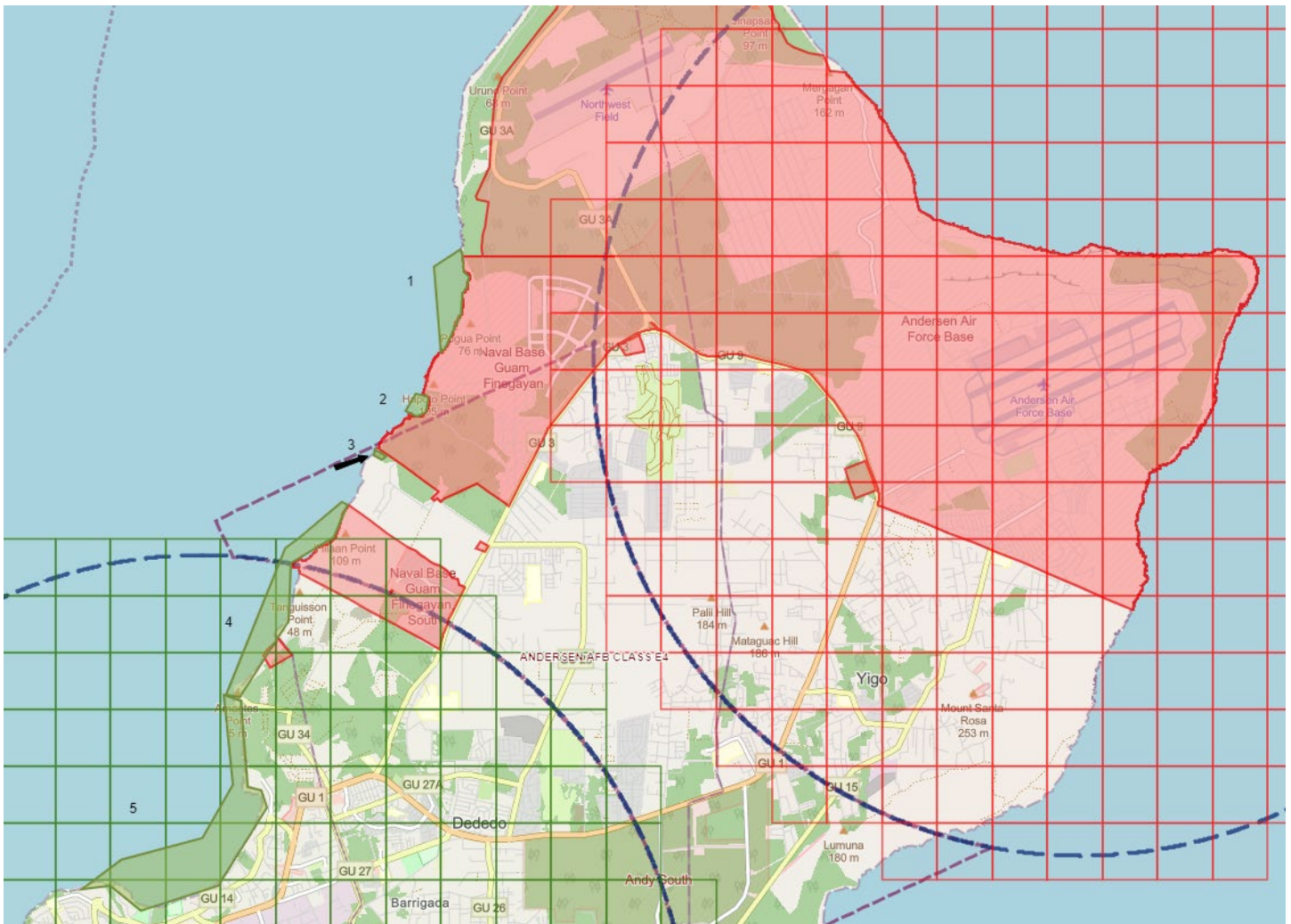
8. All operations under this Waiver must use one or more VO;
9. Operations may not be conducted at night or during civil twilight, as defined in 14 CFR § 1.1 and § 107.29(c), respectively;
10. The sUAS ground control station must display in real-time the following information: sUA altitude, position, direction of flight, and sUAS flight mode, and be configured to audibly or visually alert the PIC of degraded system performance and loss of Control Link with the sUA. This information must be available at all times to the PIC;
11. The sUA must be equipped with High Visibility Markings and/or anti-collision lighting to increase conspicuity of the sUA in order to be seen by crewmembers in other aircraft from a distance of no less than 1 statute mile during the day;
12. The Responsible Person must file a Notice to Air Mission (NOTAM) no more than 72 hours and no less than 24 hours prior to operating under this Waiver. A NOTAM can be filed by calling 1-877-487-6867 (1-877-4-US-NTMS); and must include the location and/or operating area, altitude, time, nature of the activity, Waiver and/or COA number, PIC name and contact information. The Responsible Person must verify the NOTAM has been issued prior to conducting waived operations;
13. **The operator must verbally contact Guam Center Radar Approach Control (CERAP) at 671-473-1210, 15-minutes prior to any sUA event, and again when complete. Leaving a phone voice message does not meet this requirement. During the phone call, let CERAP know the issued NOTAM number from above, what Zone you'll be operating in, expected duration of flight, and a good on-site contact phone number. You must receive verbal approval to fly. Call CERAP again when the operation is complete.**

14. Prior to conducting operations under this Waiver, the PIC must ensure that the geo-fence system, telemetry system, associated flight control systems, and sensors, as described in the Waiver application, operate properly;
15. ADS-B out (1090/978 MHz) may not be transmitted from the sUAS when operating pursuant to this Waiver;
16. All emitters used in the sUAS must be in compliance with all applicable FCC regulations and all provisions of the FCC authorization granted for the emitter. A FCC experimental authorization may not be used for sUAS operations under this Waiver; and
17. Operations conducted under this Waiver are limited to the Operations Area described in the waiver application (see description and images below).

Guam, U.S. Island Territory:

The following images/pages show Zones 1-16 and coordinates associated with each (in **Green**)
At or Below: 800 feet AGL





Zone 1 Class G

13° 35' 54.26" N, 144° 49' 56.34" E; 13° 36' 03.12" N, 144° 50' 10.25" E
 13° 36' 00.60" N, 144° 50' 11.44" E; 13° 35' 56.01" N, 144° 50' 11.52" E
 13° 35' 51.55" N, 144° 50' 12.38" E; 13° 35' 48.59" N, 144° 50' 15.48" E
 13° 35' 43.16" N, 144° 50' 14.28" E; 13° 35' 40.46" N, 144° 50' 11.91" E
 13° 35' 28.84" N, 144° 50' 10.93" E; 13° 35' 11.00" N, 144° 50' 02.39" E
 13° 35' 09.23" N, 144° 50' 00.20" E

Zone 2 Class G

13° 34' 47.14" N, 144° 49' 46.40" E; 13° 34' 45.60" N, 144° 49' 52.28" E
 13° 34' 43.92" N, 144° 49' 53.28" E; 13° 34' 37.25" N, 144° 49' 51.75" E
 13° 34' 34.14" N, 144° 49' 47.12" E; 13° 34' 37.91" N, 144° 49' 40.88" E

Zone 3 Andersen AFB Class E4

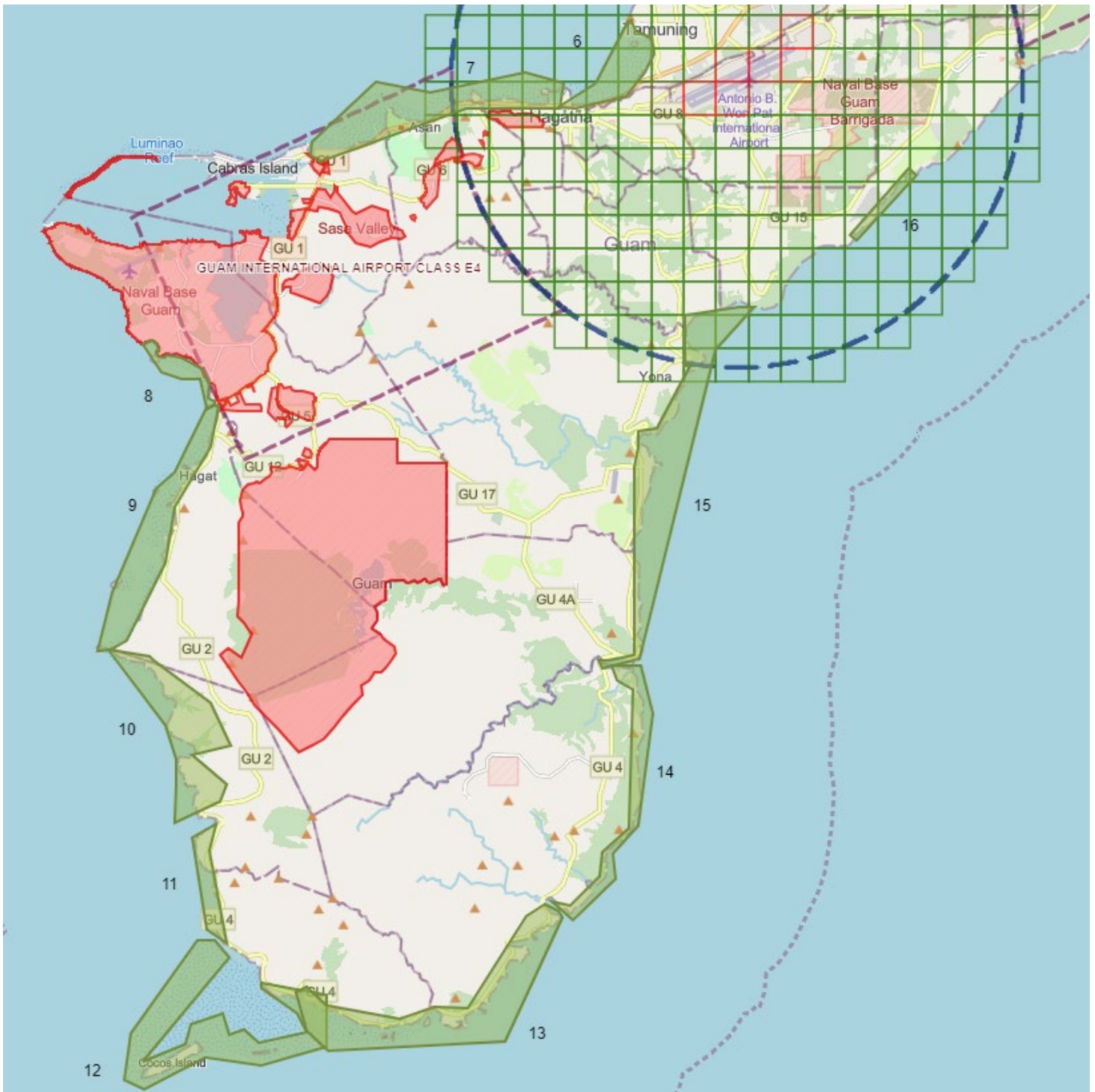
13° 34' 17.59" N, 144° 49' 24.07" E; 13° 34' 13.92" N, 144° 49' 30.34" E
13° 34' 12.32" N, 144° 49' 27.53" E; 13° 34' 14.61" N, 144° 49' 23.34" E

Zone 4 Andersen AFB Class E4 and PGUM Class D

13° 33' 49.89" N, 144° 49' 06.42" E; 13° 33' 48.77" N, 144° 49' 09.24" E
13° 33' 31.27" N, 144° 49' 02.42" E; 13° 33' 17.50" N, 144° 48' 38.27" E
13° 32' 46.55" N, 144° 48' 37.27" E; 13° 32' 06.29" N, 144° 48' 10.59" E
13° 32' 07.73" N, 144° 48' 02.55" E; 13° 33' 24.94" N, 144° 48' 35.42" E
13° 33' 30.27" N, 144° 48' 42.50" E

Zone 5 PGUM Class D

13° 32' 07.48" N, 144° 48' 01.43" E; 13° 32' 04.60" N, 144° 48' 11.00" E
13° 31' 19.19" N, 144° 48' 14.89" E; 13° 31' 16.98" N, 144° 48' 22.09" E
13° 31' 07.98" N, 144° 48' 25.05" E; 13° 30' 26.54" N, 144° 47' 58.93" E
13° 30' 13.51" N, 144° 47' 16.65" E; 13° 30' 26.39" N, 144° 46' 59.72" E
13° 30' 24.24" N, 144° 46' 44.31" E; 13° 30' 39.99" N, 144° 47' 06.37" E
13° 30' 52.04" N, 144° 47' 50.44" E; 13° 31' 20.34" N, 144° 48' 06.96" E



Zone 6 PGUM Class D

13° 29' 53.76" N, 144° 46' 08.39" E; 13° 29' 55.54" N, 144° 46' 12.03" E
 13° 29' 45.73" N, 144° 46' 15.02" E; 13° 29' 39.67" N, 144° 46' 29.73" E
 13° 29' 25.77" N, 144° 46' 32.01" E; 13° 29' 08.05" N, 144° 46' 23.76" E
 13° 28' 47.81" N, 144° 46' 05.98" E; 13° 28' 36.14" N, 144° 45' 20.06" E
 13° 28' 37.48" N, 144° 45' 04.27" E; 13° 28' 58.78" N, 144° 45' 38.02" E

Zone 7 PGUM Class D

13° 28' 58.96" N, 144° 45' 09.07" E; 13° 28' 36.12" N, 144° 45' 05.46" E
 13° 28' 36.58" N, 144° 43' 37.92" E; 13° 27' 47.46" N, 144° 41' 22.84" E
 13° 27' 54.47" N, 144° 41' 13.74" E; 13° 28' 05.81" N, 144° 41' 14.61" E
 13° 28' 59.38" N, 144° 42' 14.89" E; 13° 28' 50.40" N, 144° 43' 05.29" E
 13° 29' 08.88" N, 144° 44' 32.55" E

Zone 8 Class G

13° 25' 03.02" N, 144° 38' 38.55" E; 13° 25' 06.62" N, 144° 38' 46.34" E
 13° 25' 04.45" N, 144° 38' 50.62" E; 13° 24' 58.54" N, 144° 38' 53.32" E
 13° 24' 56.57" N, 144° 38' 50.17" E; 13° 24' 52.85" N, 144° 38' 52.53" E
 13° 24' 51.44" N, 144° 38' 57.09" E; 13° 24' 54.17" N, 144° 39' 00.62" E
 13° 24' 51.45" N, 144° 39' 13.88" E; 13° 24' 41.72" N, 144° 39' 32.34" E
 13° 24' 28.57" N, 144° 39' 40.27" E; 13° 24' 15.35" N, 144° 39' 38.42" E
 13° 24' 11.53" N, 144° 39' 44.61" E; 13° 24' 08.82" N, 144° 39' 44.88" E
 13° 24' 05.23" N, 144° 39' 36.87" E; 13° 24' 32.39" N, 144° 39' 31.78" E
 13° 24' 32.39" N, 144° 39' 14.55" E; 13° 24' 38.55" N, 144° 38' 55.11" E

Zone 9 Class G

13° 24' 04.57" N, 144° 39' 36.46" E; 13° 24' 08.69" N, 144° 39' 43.71" E
 13° 24' 07.44" N, 144° 39' 48.23" E; 13° 23' 30.01" N, 144° 39' 41.20" E
 13° 22' 36.34" N, 144° 39' 08.49" E; 13° 21' 46.41" N, 144° 38' 59.36" E
 13° 20' 36.24" N, 144° 38' 23.02" E; 13° 20' 28.65" N, 144° 38' 08.69" E
 13° 20' 26.74" N, 144° 37' 56.07" E; 13° 21' 19.86" N, 144° 38' 08.65" E
 13° 22' 53.36" N, 144° 38' 49.49" E; 13° 23' 08.02" N, 144° 39' 07.79" E

Zone 10 Class G

13° 20' 28.44" N, 144° 38' 06.46" E; 13° 20' 22.13" N, 144° 38' 43.71" E
 13° 20' 18.21" N, 144° 38' 48.23" E; 13° 19' 39.47" N, 144° 39' 41.20" E
 13° 19' 00.76" N, 144° 39' 59.36" E; 13° 18' 53.16" N, 144° 39' 23.02" E
 13° 18' 26.51" N, 144° 39' 56.07" E; 13° 18' 10.76" N, 144° 39' 49.49" E
 13° 17' 51.38" N, 144° 39' 07.91" E; 13° 17' 53.66" N, 144° 39' 07.79" E
 13° 18' 25.34" N, 144° 39' 08.65" E; 13° 18' 48.73" N, 144° 39' 08.69" E
 13° 19' 19.52" N, 144° 38' 58.49" E

Zone 11 Class G

13° 17' 50.77" N, 144° 39' 46.51" E; 13° 17' 26.05" N, 144° 39' 39.85" E
 13° 16' 03.65" N, 144° 39' 56.24" E; 13° 16' 15.49" N, 144° 39' 37.25" E
 13° 17' 38.59" N, 144° 39' 23.11" E

Zone 12 Class G

13° 16' 05.20" N, 144° 39' 28.16" E; 13° 16' 04.94" N, 144° 39' 44.94" E
 13° 15' 50.21" N, 144° 39' 58.12" E; 13° 14' 15.22" N, 144° 38' 37.66" E
 13° 14' 31.17" N, 144° 39' 18.40" E; 13° 14' 49.31" N, 144° 39' 22.24" E
 13° 15' 00.61" N, 144° 39' 52.28" E; 13° 14' 40.37" N, 144° 39' 58.01" E
 13° 14' 44.54" N, 144° 40' 11.67" E; 13° 14' 33.44" N, 144° 40' 25.47" E
 13° 14' 42.22" N, 144° 41' 10.32" E; 13° 14' 59.40" N, 144° 41' 00.92" E
 13° 15' 21.47" N, 144° 40' 27.12" E; 13° 15' 26.90" N, 144° 40' 28.16" E
 13° 15' 16.61" N, 144° 41' 28.35" E; 13° 14' 29.39" N, 144° 41' 28.35" E
 13° 14' 12.91" N, 144° 40' 27.54" E; 13° 14' 19.58" N, 144° 39' 36.81" E
 13° 13' 50.13" N, 144° 38' 39.94" E; 13° 13' 59.76" N, 144° 38' 21.13" E
 13° 14' 41.22" N, 144° 38' 26.41" E

Zone 13 Class G

13° 15' 18.33" N, 144° 41' 00.42" E; 13° 15' 24.27" N, 144° 41' 10.51" E
 13° 15' 24.05" N, 144° 41' 10.40" E; 13° 15' 06.76" N, 144° 41' 29.21" E
 13° 14' 54.90" N, 144° 42' 36.17" E; 13° 15' 05.32" N, 144° 43' 08.70" E
 13° 15' 04.68" N, 144° 43' 39.66" E; 13° 16' 27.41" N, 144° 44' 34.14" E
 13° 16' 37.97" N, 144° 44' 51.09" E; 13° 16' 32.15" N, 144° 45' 03.64" E
 13° 16' 26.27" N, 144° 45' 07.58" E; 13° 14' 34.01" N, 144° 44' 14.00" E
 13° 14' 26.35" N, 144° 41' 29.88" E; 13° 14' 43.44" N, 144° 41' 09.13" E
 13° 15' 18.25" N, 144° 41' 00.47" E

Zone 14 Class G

13° 20' 12.78" N, 144° 45' 53.27" E; 13° 20' 13.00" N, 144° 46' 20.00" E
 13° 19' 30.75" N, 144° 46' 30.95" E; 13° 17' 48.48" N, 144° 46' 18.40" E
 13° 17' 24.32" N, 144° 45' 54.13" E; 13° 17' 01.58" N, 144° 45' 56.17" E
 13° 16' 23.88" N, 144° 45' 16.98" E; 13° 16' 40.49" N, 144° 44' 57.60" E
 13° 16' 36.48" N, 144° 45' 15.11" E; 13° 17' 03.49" N, 144° 45' 41.96" E
 13° 17' 25.24" N, 144° 45' 44.44" E; 13° 17' 46.21" N, 144° 46' 09.03" E
 13° 19' 51.76" N, 144° 46' 12.94" E; 13° 20' 00.00" N, 144° 45' 58.00" E

Zone 15 PGUM Class D & G

13° 25' 36.41" N, 144° 47' 52.48" E; 13° 25' 36.41" N, 144° 48' 05.48" E
 13° 24' 57.91" N, 144° 47' 29.49" E; 13° 20' 19.95" N, 144° 46' 19.85" E
 13° 20' 10.81" N, 144° 45' 44.76" E; 13° 20' 18.34" N, 144° 45' 40.59" E
 13° 20' 18.34" N, 144° 45' 52.09" E; 13° 20' 22.72" N, 144° 46' 13.59" E
 13° 21' 48.94" N, 144° 46' 13.59" E; 13° 23' 12.99" N, 144° 46' 14.60" E
 13° 23' 31.48" N, 144° 46' 18.03" E; 13° 23' 44.89" N, 144° 46' 18.03" E
 13° 23' 47.67" N, 144° 46' 34.82" E; 13° 24' 44.02" N, 144° 47' 06.35" E
 13° 24' 44.02" N, 144° 47' 01.34" E; 13° 25' 30.00" N, 144° 47' 00.00" E

