

# Airport and Airway Trust Fund (AATF)

## Fact Sheet

Updated: July 2022



Federal Aviation  
Administration



# AATF History

- Created by the Airport and Airway Development and Revenue Act of 1970 to finance aviation programs
  - Revenues are derived from aviation-related excise taxes on passengers, cargo, and fuel
  - The aviation excise taxes are augmented with contributions from the general fund
  - Provides funding for capital improvements to the U.S. airport and airways system
- Since the COVID-19 pandemic and the commitment to help respond to the resulting downturn in air traffic activity that followed, FAA has received a greater amount of funding from the general fund than before 2020. For example, the trust fund taxes and fees provided FAA with 86.9% of its funding in FY 2018 and 93.8% of the agency's funding in FY 2019.
- In FY 2021 trust fund contributions were 61.1% of the FAA budget and 54.8% in FY 2022

# AATF Funds these accounts

- **FAA accounts:**
  - Grants-in-Aid for Airports (augmented with funding from the General Fund)
  - Facilities and Equipment
  - Research, Engineering, and Development
  - Operations (partly supported by the AATF with the rest of budgetary resources coming from the General Fund)
- **Department of Transportation accounts:**
  - Essential Air Services (EAS) program

Grants-in-Aid for Airports has been supplemented by \$1.9 billion from the General Fund in FY18 – FY20. Additionally, because of the extraordinary need resulting from the COVID pandemic, a total of \$20 billion in assistance to airports was provided in three coronavirus relief bills in FY 2020 and FY 2021.

Additionally, the Infrastructure Investment and Jobs Act invests \$15 billion in airport infrastructure, \$5 billion in airport terminals, and another \$5 billion in air traffic facilities.

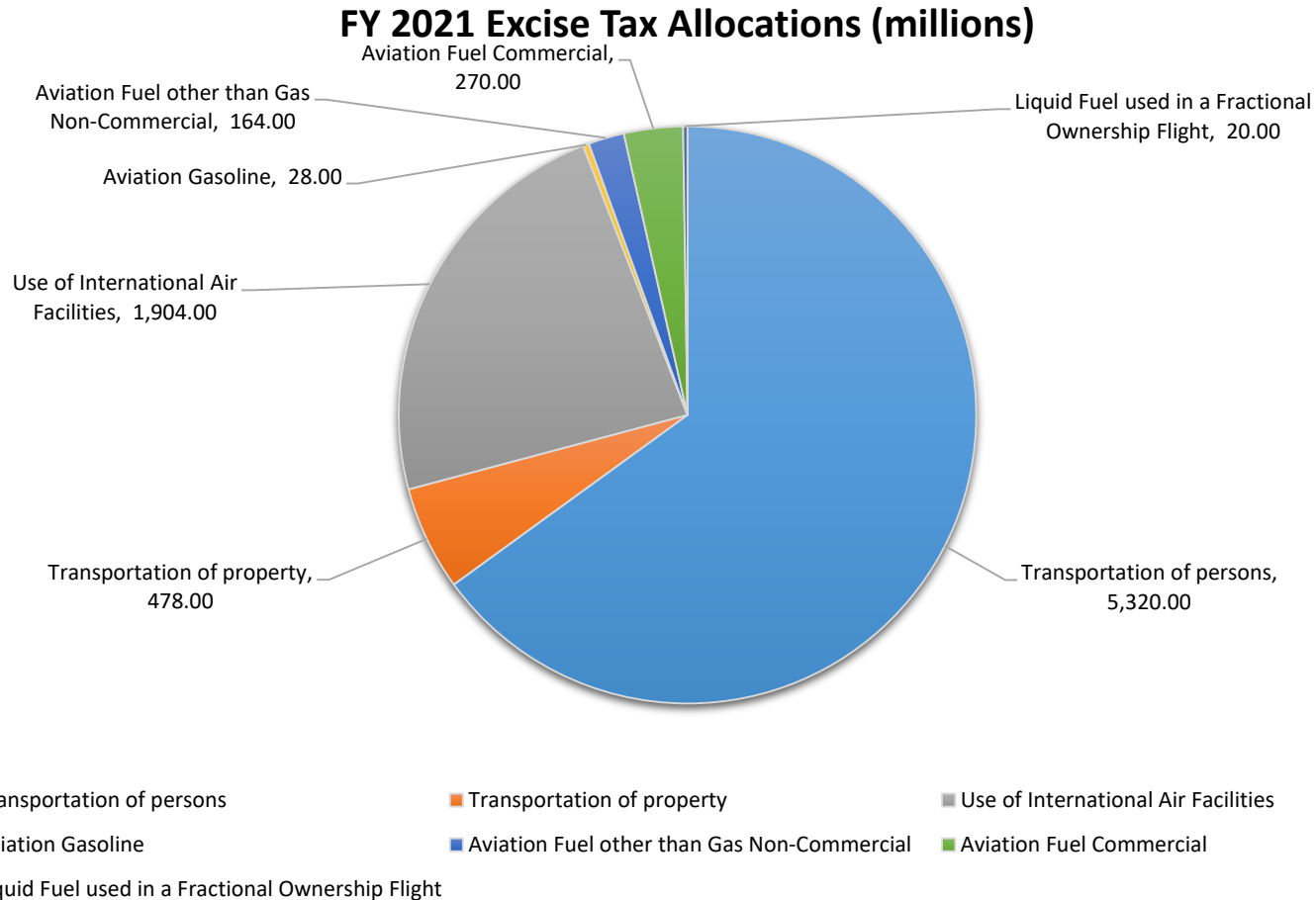
# Trust Fund Excise Taxes Structure

## Trust Fund Excise Tax Revenue Sources

## Rates effective as of January 1, 2022 for CY2022

- |  |   |  |
|--|---|--|
| • Domestic passenger ticket tax  | ➔ | • 7.5 percent  |
| • Domestic flight segment tax (excluding flights to or from rural airports)                                | ➔ | • \$4.50 per passenger per segment; indexed to the Consumer Price Index  |
| • Tax on flights between the continental United States and Alaska or Hawaii (or between Alaska and Hawaii) | ➔ | • \$9.90 per passenger; indexed to the Consumer Price Index  |
| • International arrival and departure tax  | ➔ | • \$19.70 per passenger; indexed to the Consumer Price Index   |
| • Tax on mileage awards (frequent flyer awards tax)  | ➔ | • 7.5 percent of value of miles  |
| • Domestic commercial fuel tax   | ➔ | • 4.3 cents per gallon   |
| • Domestic general aviation gasoline tax   | ➔ | • 19.3 cents per gallon  |
| • Domestic general aviation jet fuel tax   | ➔ | • 21.8 cents per gallon Note: Effective after March 31, 2012 a 14.1 cents per gallon surcharge for fuel used in fractional ownership flights |
| • Tax on domestic cargo or mail  | ➔ | • 6.25 percent on the price paid for transportation of domestic cargo or mail  |

# AATF FY 2021 Excise Tax Revenues



**Total excise tax revenue \$8,186\***

\*In FY21, there were refunds from the trust fund of \$5.09M for aviation fuel taxes and \$8.18M for aviation taxes other than gasoline.

# FAA Accounts & AATF Funding

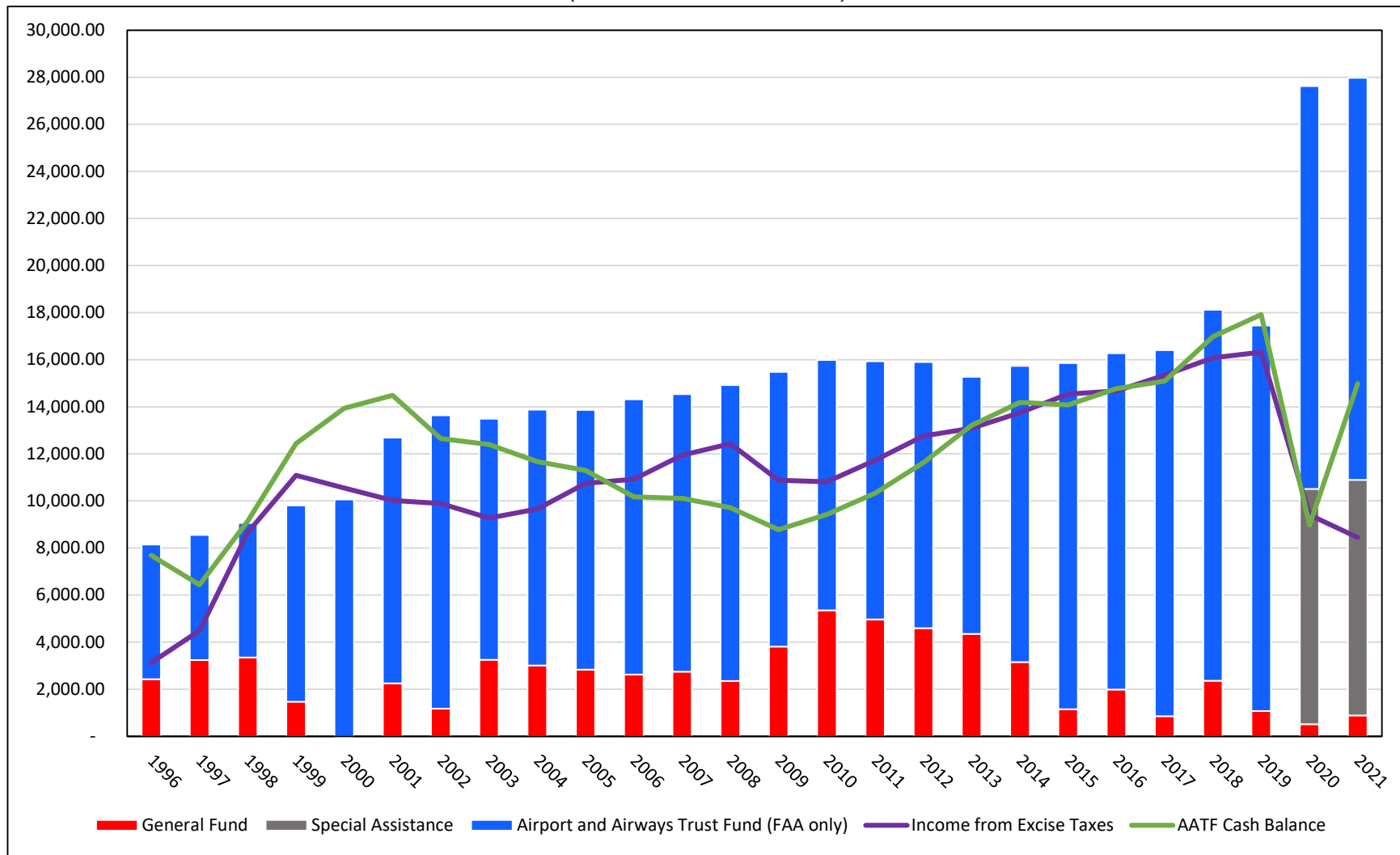
(in thousands of dollars)

ACCOUNT NAME	FY 2018 ACTUAL	FY 2019 ACTUAL	FY 2020 ACTUAL	FY 2021 ACTUAL	FY 2022 ENACTED
<b>Operations</b>	\$ 10,211,754	\$ 10,410,800	\$ 10,630,000	\$ 11,001,500	\$ 11,414,100
General	\$ 1,360,754	\$ 577,400	\$ 111,000	\$ 482,500	\$ 5,000,000
AATF	\$ 8,851,000	\$ 9,833,400	\$ 10,519,000	\$ 10,519,000	\$ 6,414,100
<b>Facilities &amp; Equipment</b>	\$ 3,250,000	\$ 3,000,000	\$ 3,045,000	\$ 3,015,000	\$ 2,892,888
AATF	\$ 3,250,000	\$ 3,000,000	\$ 3,045,000	\$ 3,015,000	\$ 2,892,888
<b>Research, Engineering, &amp; Development</b>	\$ 188,900	\$ 191,100	\$ 192,665	\$ 198,000	\$ 248,500
AATF	\$ 188,900	\$ 191,100	\$ 192,665	\$ 198,000	\$ 248,500
<b>Grants in Aid for Airports</b>	\$ 4,350,000	\$ 3,850,000	\$ 3,750,000	\$ 3,750,000	\$ 3,904,180
Contract Authority (AATF)	\$ 3,350,000	\$ 3,350,000	\$ 3,350,000	\$ 3,350,000	\$ 3,350,000
General Fund Appropriation	\$ 1,000,000	\$ 500,000	\$ 400,000	\$ 400,000	\$ 554,180
<b>Supplemental</b>	\$ -	\$ -	\$ 10,000,000	\$ 10,009,000	\$ 100,000
CARES Act	\$ -	\$ -	\$ 10,000,000	\$ -	\$ -
CRSSA	\$ -	\$ -	\$ -	\$ 2,000,000	\$ -
American Rescue Plan	\$ -	\$ -	\$ -	\$ 8,000,000	\$ -
Employee Leave Fund	\$ -	\$ -	\$ -	\$ 9,000	\$ -
Hurricane Relief	\$ -	\$ -	\$ -	\$ -	\$ 100,000
<b>IIJA Authority</b>	\$ -	\$ -	\$ -	\$ -	\$ 5,000,000
Facilities and Equipment	\$ -	\$ -	\$ -	\$ -	\$ 1,000,000
Airport Infrastructure Grants	\$ -	\$ -	\$ -	\$ -	\$ 3,000,000
Airport Terminal Program	\$ -	\$ -	\$ -	\$ -	\$ 1,000,000
AATF	\$ 15,639,900	\$ 16,374,500	\$ 17,106,665	\$ 17,082,000	\$ 12,905,488
GF	\$ 2,360,754	\$ 1,077,400	\$ 511,000	\$ 882,500	\$ 5,554,180
<b>FAA Account Total</b>	\$ 18,000,654	\$ 17,451,900	\$ 17,617,665	\$ 17,964,500	\$ 18,459,668
<b>Supplemental Total</b>	\$ -	\$ -	\$ 10,000,000	\$ 10,009,000	\$ 100,000
<b>IIJA Authority Total</b>	\$ -	\$ -	\$ -	\$ -	\$ 5,000,000
<b>GRAND TOTAL</b>	\$ 18,000,654	\$ 17,451,900	\$ 27,617,665	\$ 27,973,500	\$ 23,559,668

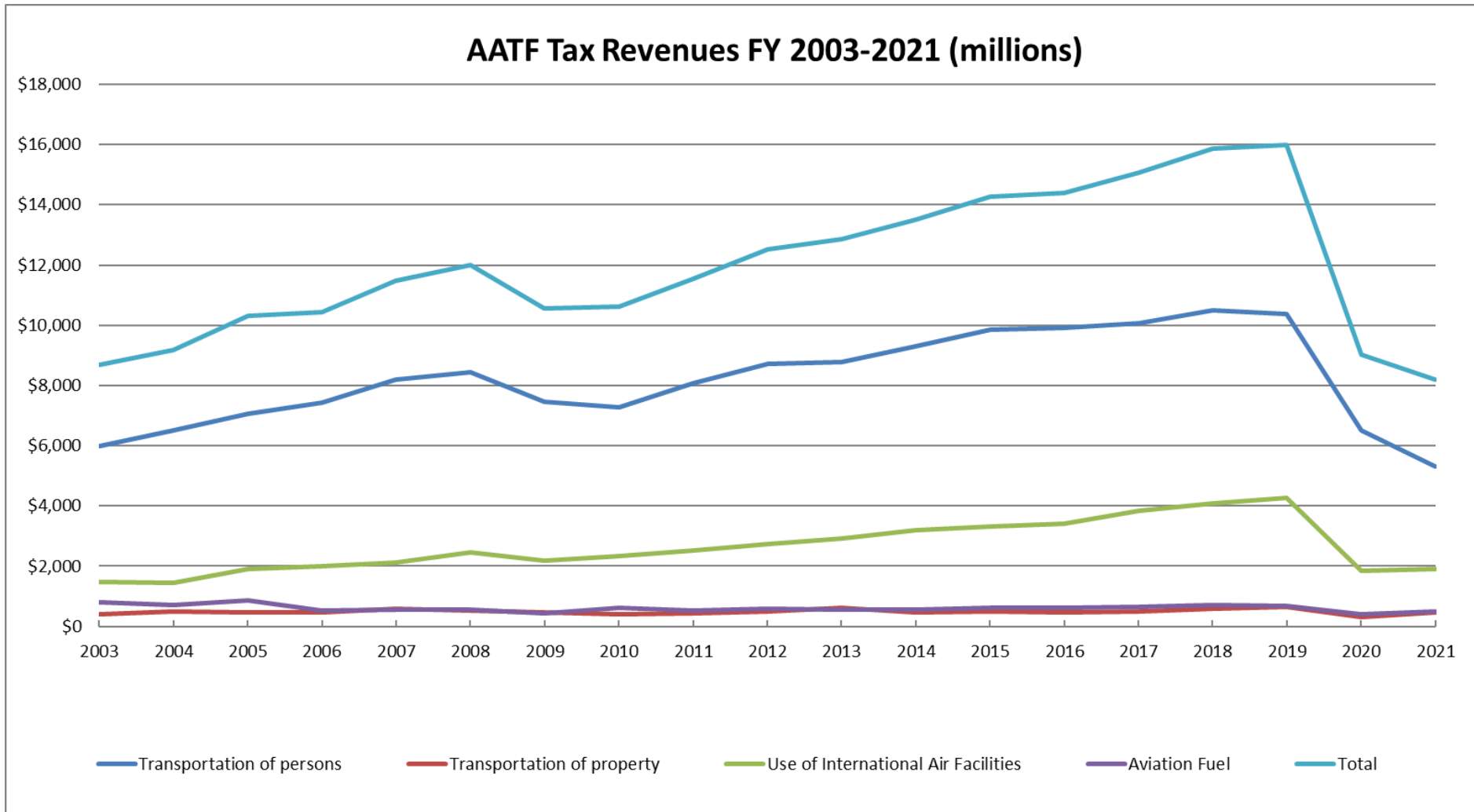


# General Fund/Trust Fund Share

(in millions of dollars)



# AATF Tax Revenue Trends





# Infrastructure Investment & Jobs Act (P.L. 117-58)

A 5-year, \$25 billion investment in the nation's air transportation system.

**\$5B**

## AIR TRAFFIC FACILITIES

For airport projects that increase safety and expand capacity.

**\$15B**

## AIRPORT INFRASTRUCTURE

For airport projects that increase safety and expand capacity.

**\$5B**

## AIRPORT TERMINALS

To replace aging terminals and airport-owned towers, increase terminal energy efficiency and accessibility, and more.

BIPARTISAN  
INFRASTRUCTURE  
LAW

