



Airport Toilet Rooms

Presenter



Josh Schorr
Accessibility Specialist

Agenda

- Toilet Rooms
 - Required Compliance
 - Wheelchair Accessible Compartments
 - Water Closet
 - Grab Bars
 - Dispensers
 - Ambulatory Accessible Compartments
 - Urinals
 - Lavatories
 - Baby Changing Stations
 - Signs

Required Compliance – New Construction (§213.2)

- Plumbing and building codes address the number and type of toilet rooms and toilet fixtures required for a facility
- In new construction, access is required to all toilet rooms, including those for employees
 - Exception permits only half of clustered single-user toilet rooms in one location serving the same users to meet accessibility requirements.

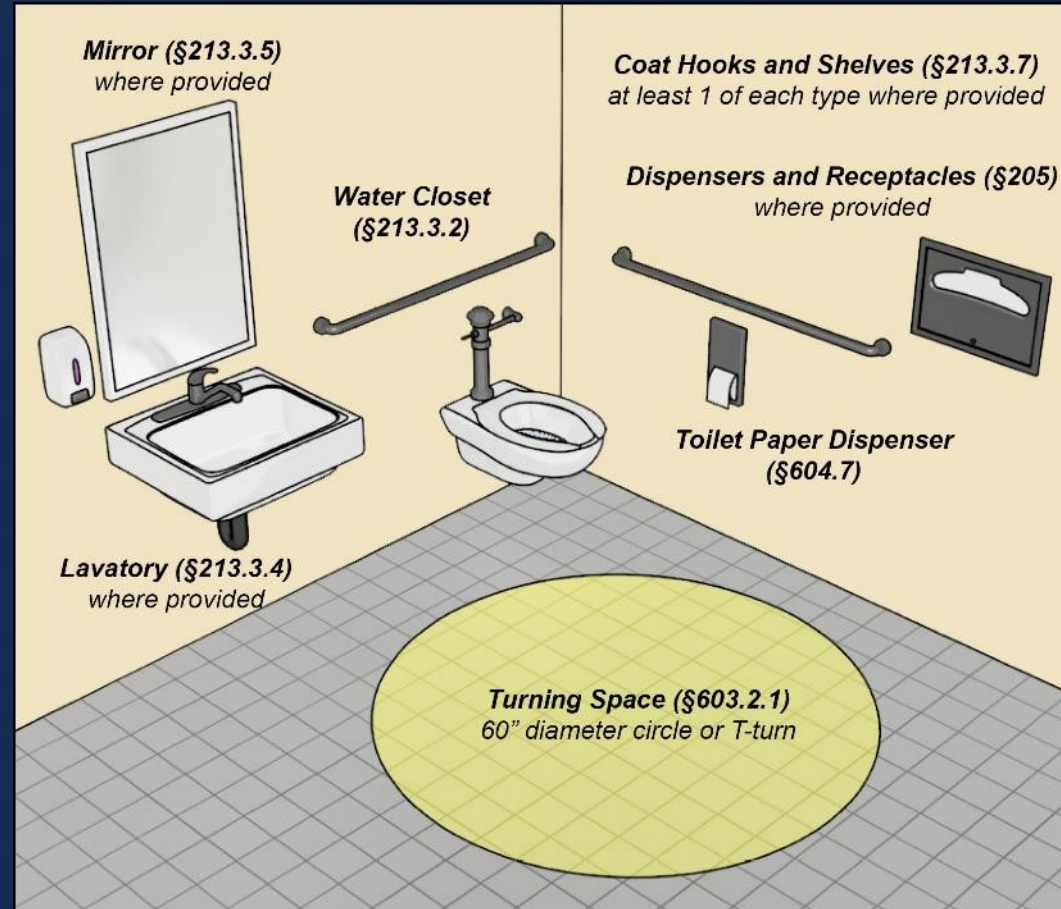




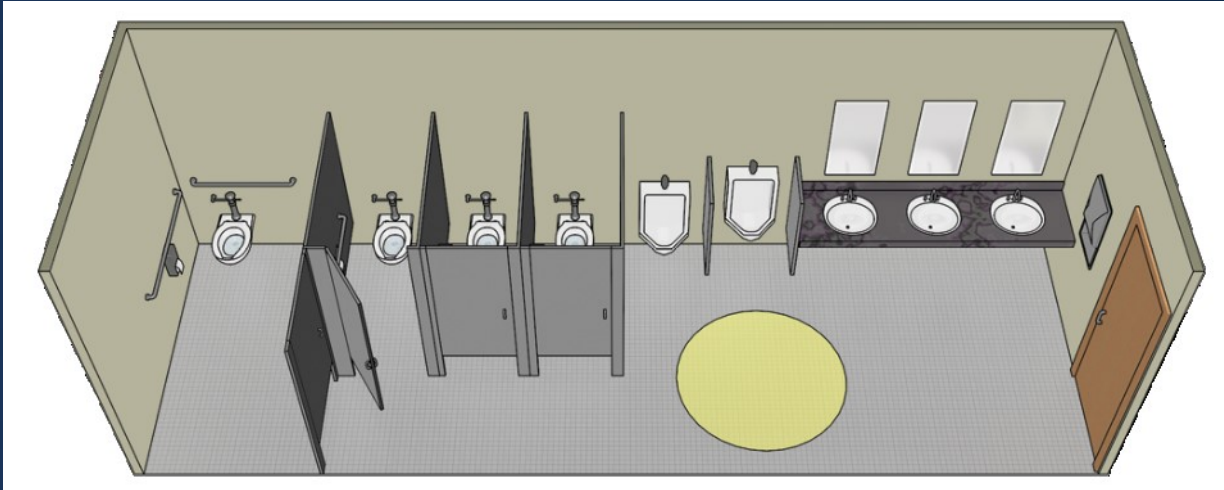
Required Compliance – Alterations (§213.2 Exception 1, §216.8)

- Unisex restrooms may substitute for access to multi-user toilet rooms in the same location only if it is technically infeasible to meet ADA requirements in both men's and women's toilet room.
- If not all toilet rooms are accessible:
 - Must provide directional signs, including International Symbol of Accessibility (ISA), to indicate location of accessible toilet rooms
 - Accessible toilet rooms need to be identified with the ISA

Toilet Room Requirements (§213.3)



Multi-User Toilet Rooms



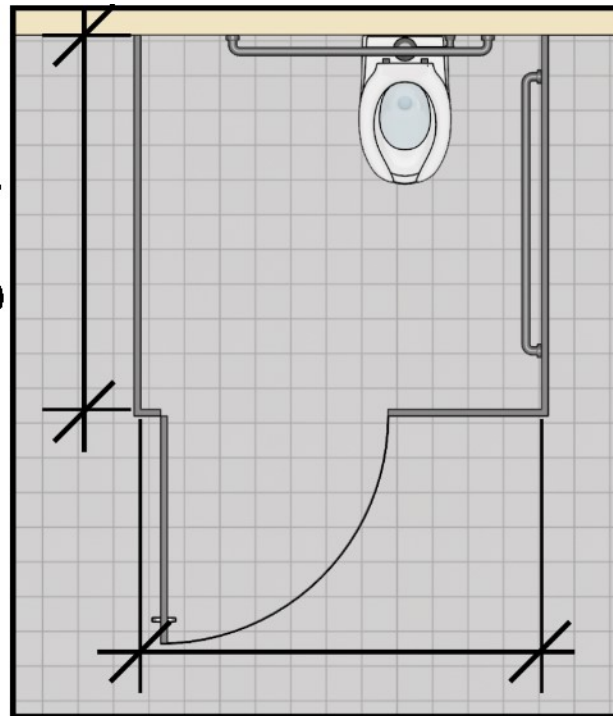
- At least one wheelchair accessible toilet compartment (§213.3.1)
- At least one compliant urinal where more than one urinal is provided (§213.3.3)
- At least one compliant lavatory (not located in a toilet compartment) and at least one compliant mirror, where provided (§213.3.4 and §213.3.5)
- At least one ambulatory accessible toilet compartment in restrooms with at least 6 toilet compartments or where the combined total of toilets and urinals is at least 6 fixtures (§213.3.1)
- Dispensers, receptacles, and other operable parts must comply where provided (§205)

Compartment Size and Toe Clearance (§604.8.1.1, §604.8.1.4)

Minimum size with toe clearance below
front partition and at least 1 side partition

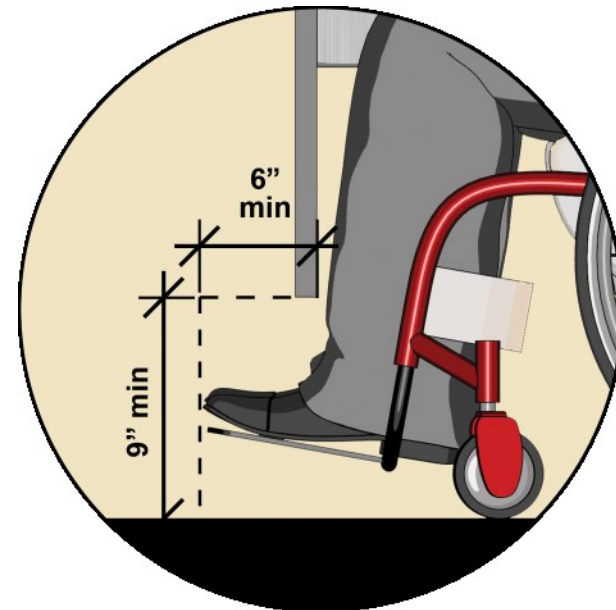
56" min
(wall-mounted water closet)

59" min
(floor-mounted water closet)



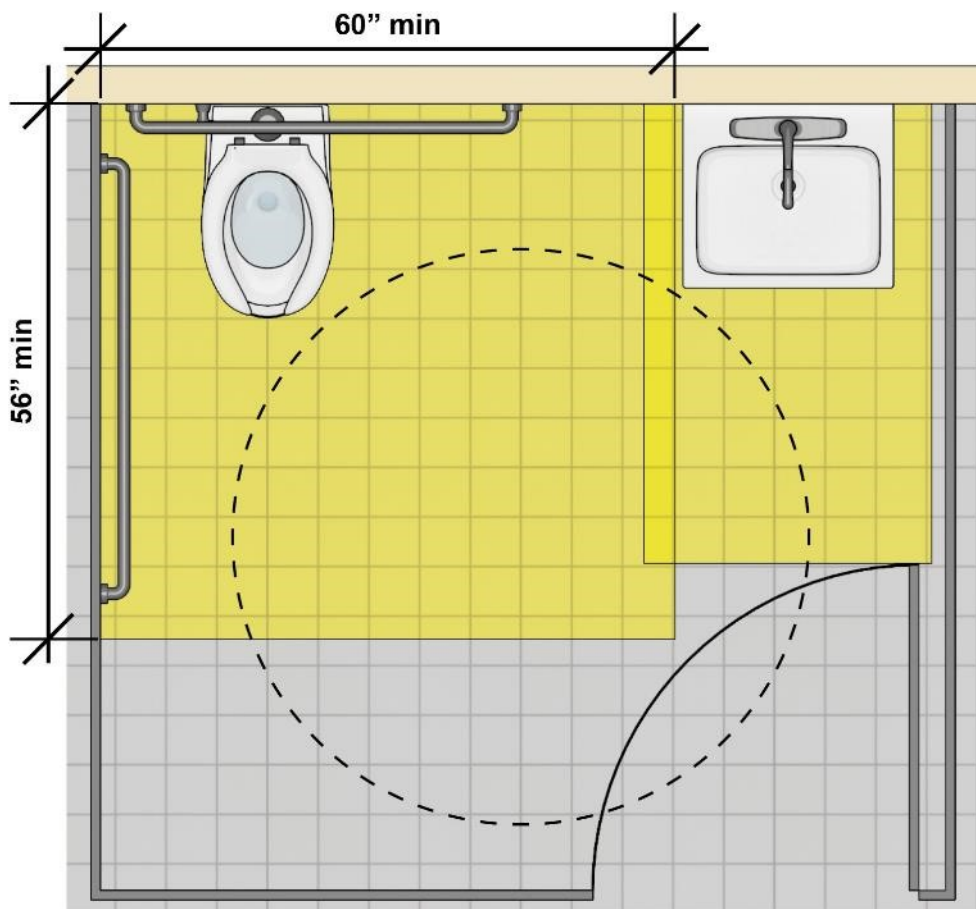
60" min

Toe clearance



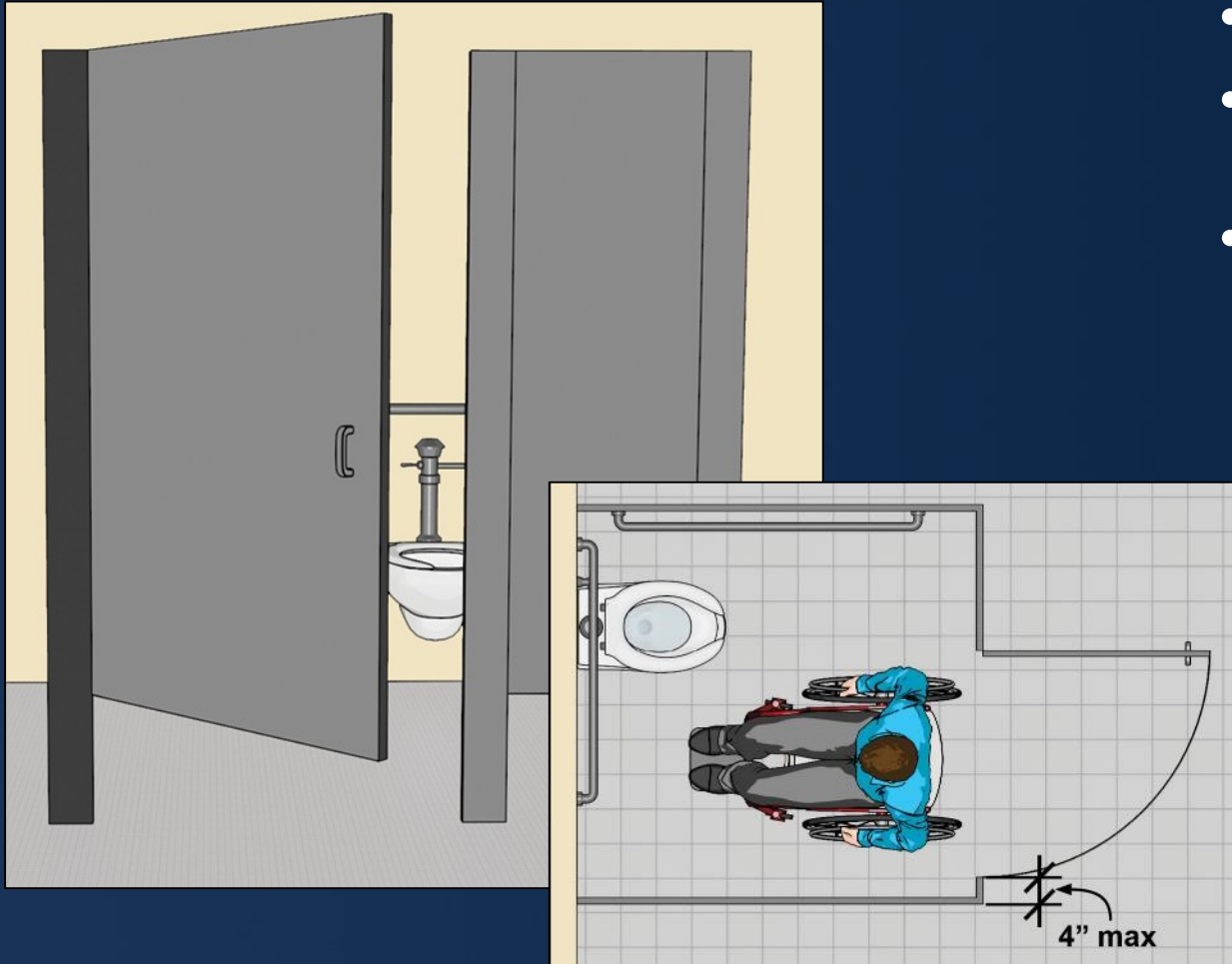
If the partition wall length is at least 6" longer than the minimum requirement, toe clearance is not required. (Exception 1)

Compartment with Lavatory



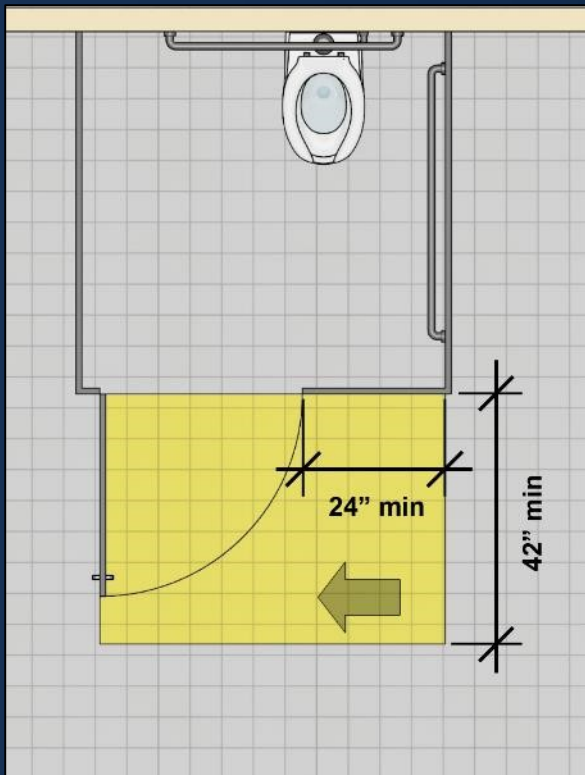
- Must be treated as single user toilet room
 - Requires turning space
 - Lavatory outside water closet clearance
 - Door swing can overlap fixture clearance if there is a clear floor space (30" min x 48" min) beyond swing of door
 - Additional accessible lavatory required outside compartment.

Compartment Doors (§604.8.1.2)

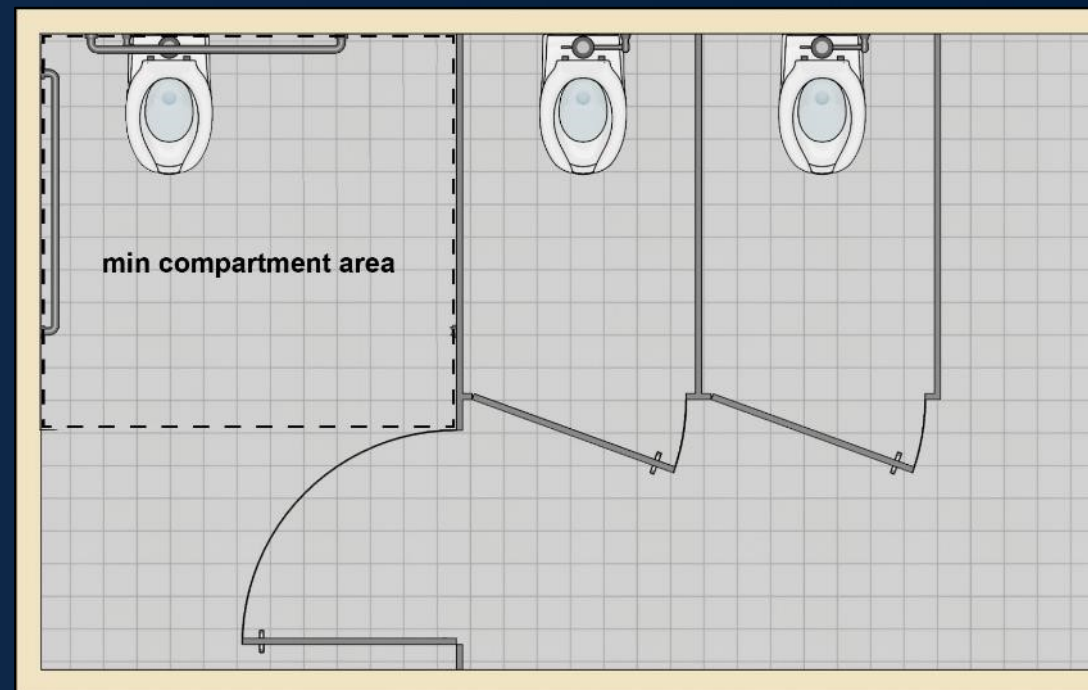


- Cannot swing into fixture clearances
- Cannot swing into minimum compartment area
- In addition to complying with 404:
 - Door must be self-closing (gravity or spring hinges are typically used).
 - Door pulls are required on both sides near the latch, 34" – 48" above the finish floor.
 - Door must be located at the front partition or the side partition farthest from the water closet
 - Door opening 4" maximum offset from corner opposite water closet

Compartment Door Clearance

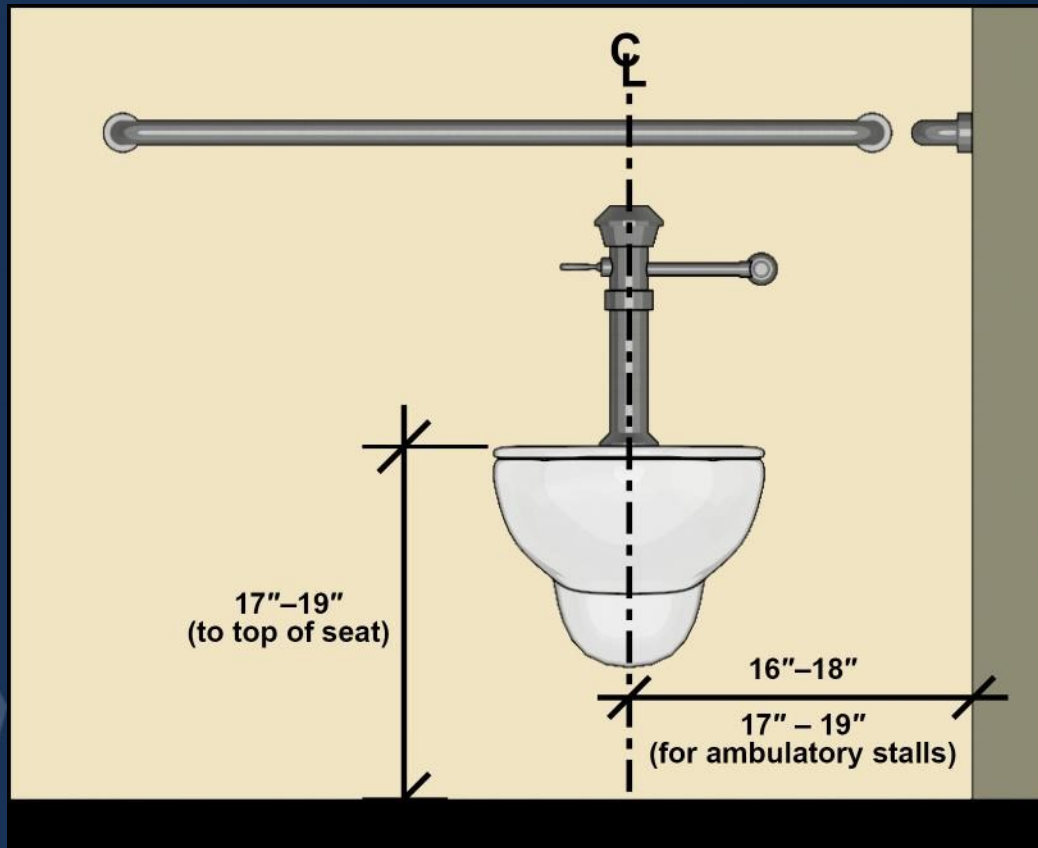


Latch side approach has reduced clearance depth for toilet compartments



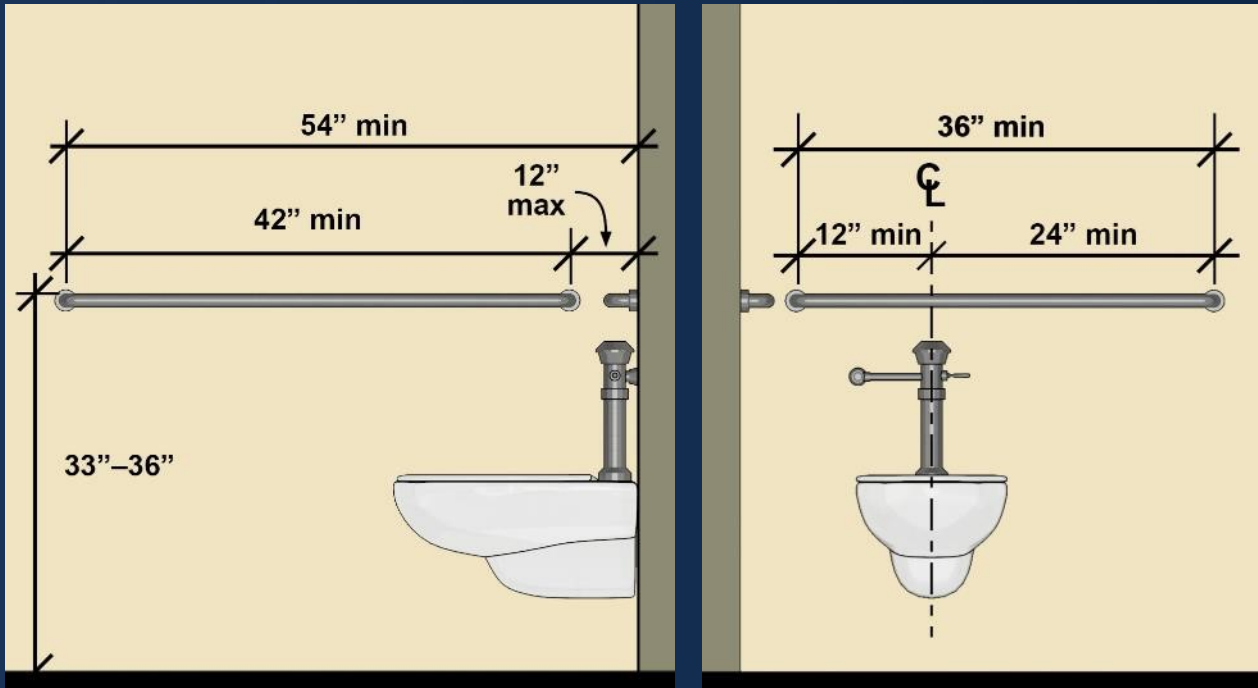
Door can only swing inward if the swing remains outside the minimum compartment area

Toilet Location and Height (§604.2, §604.4)



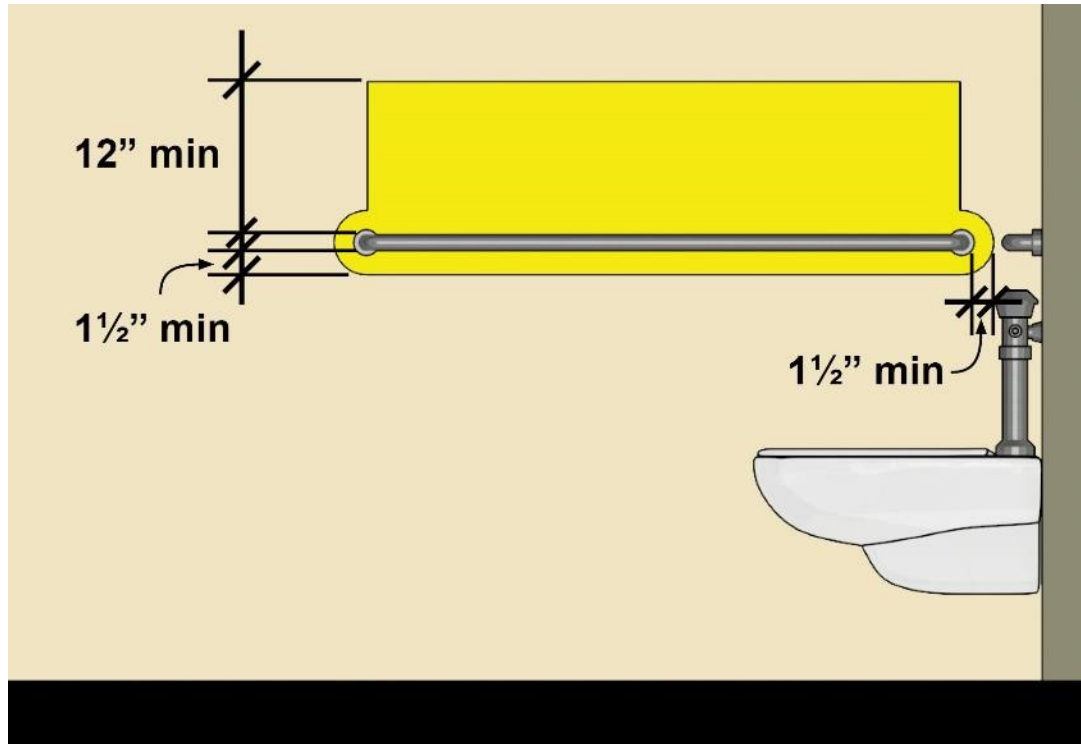
- Seats cannot be sprung to return to lifted position
- Flush controls must be on the open side and, if hand-operated, comply as operable parts

Grab Bar Dimensions (§604.5)



- Exceptions for rear grab bar:
 - Exception permits shorter rear grab bar if insufficient wall space due to an adjacent to recessed fixture
 - The rear grab bar may be split or shifted where an administrative authority requires flush controls located in a position that conflicts with the location of the grab bar

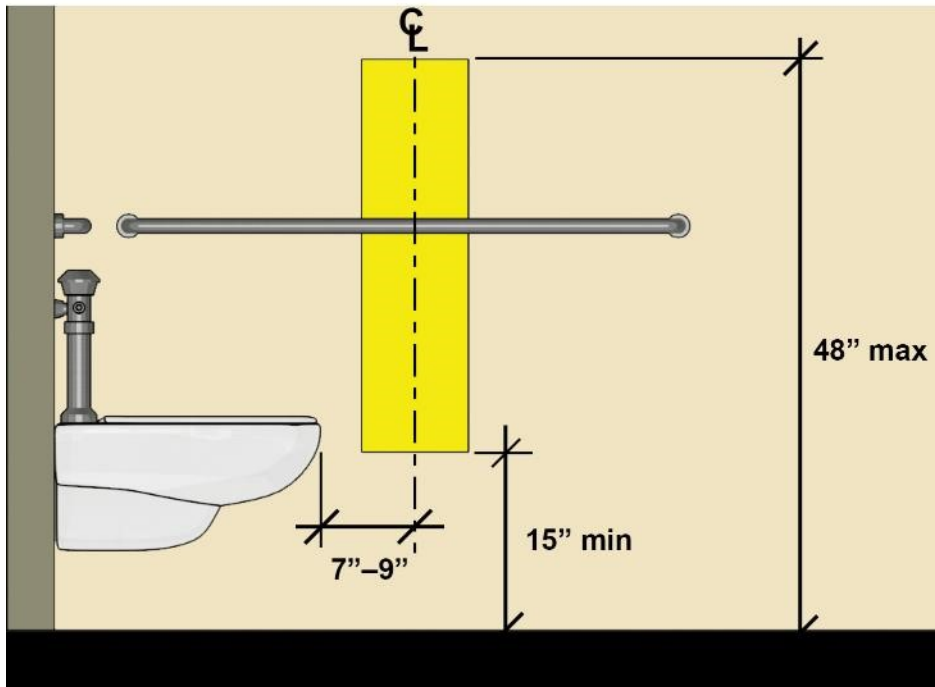
Grab Bar Clearance (§609.3)



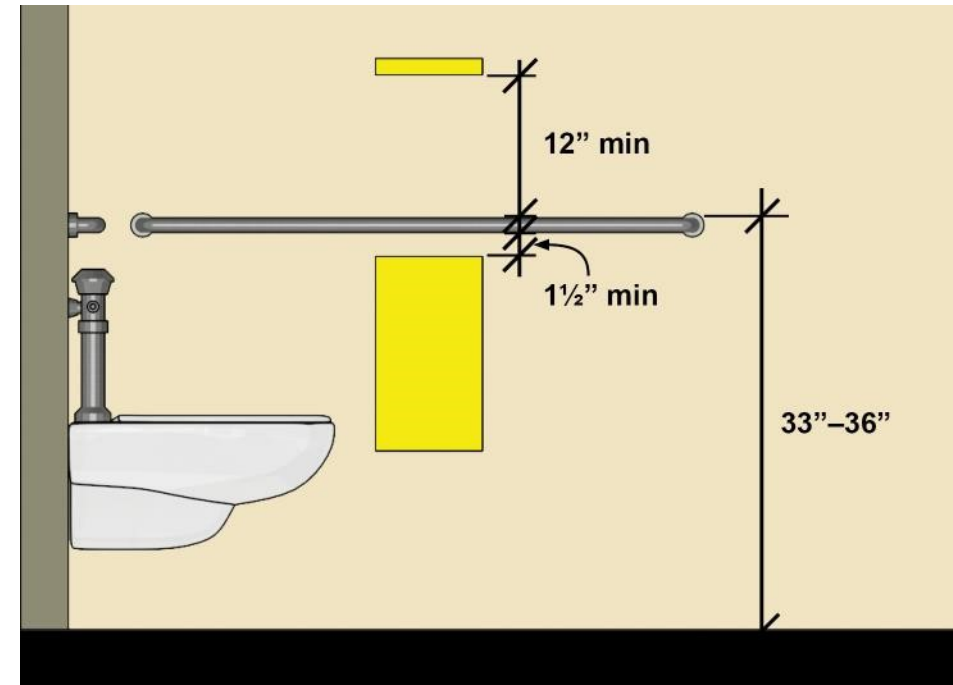
The space between the wall and the grab bar shall be 1½" absolute

Dispenser Location (§604.7)

All dimensions measured to dispenser outlet

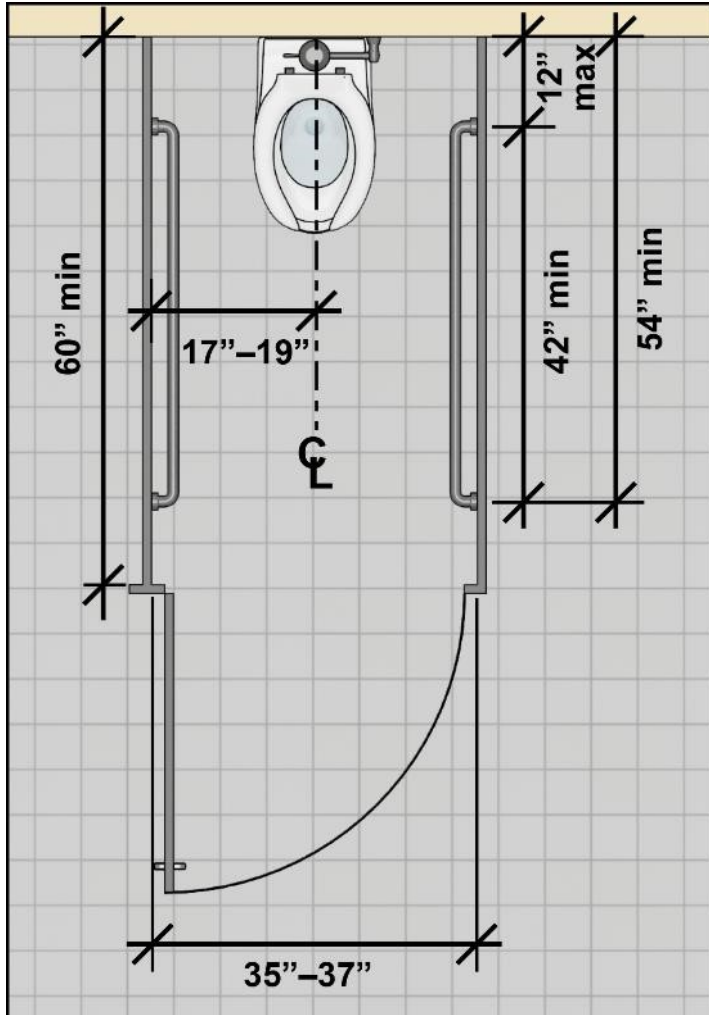


Recessed



Non-Recessed

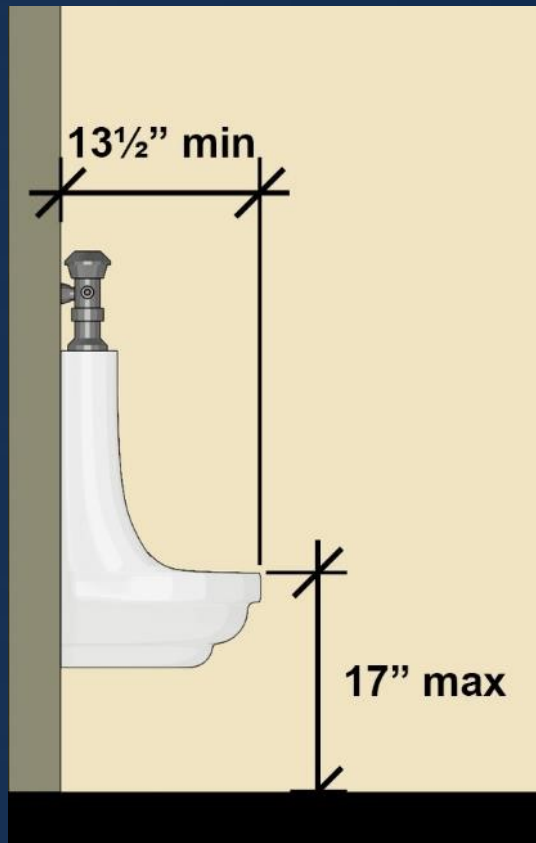
Ambulatory Stalls (§604.8.2)



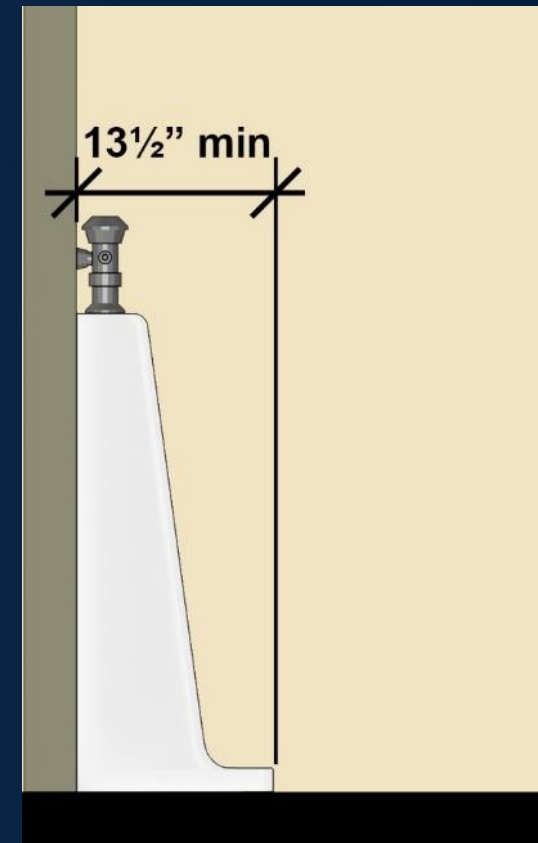
- The Standards do not permit a second wheelchair accessible stall in lieu of the required ambulatory accessible stall.

Urinal Height and Depth (§605.2)

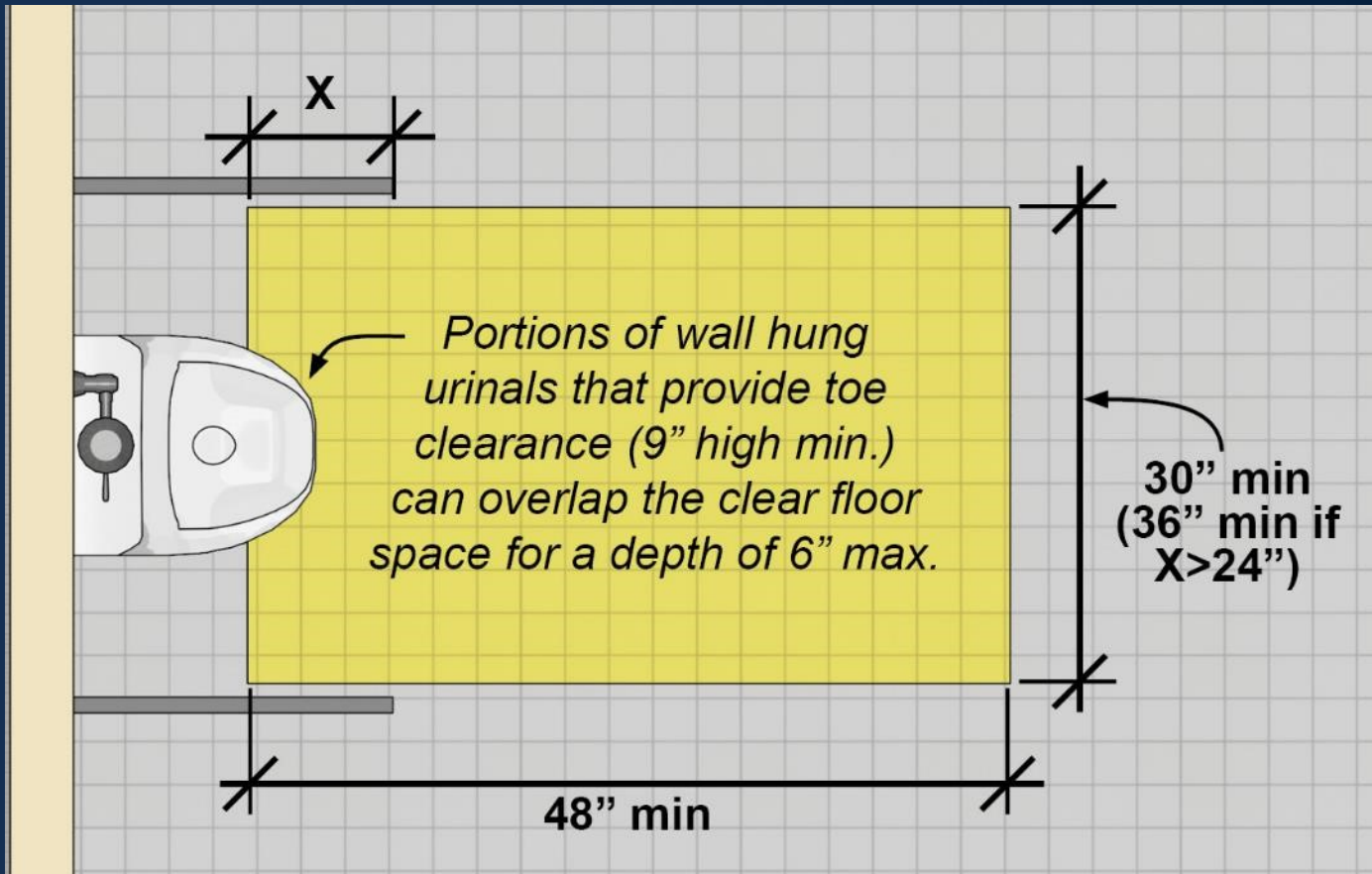
Wall-hung type



Stall type



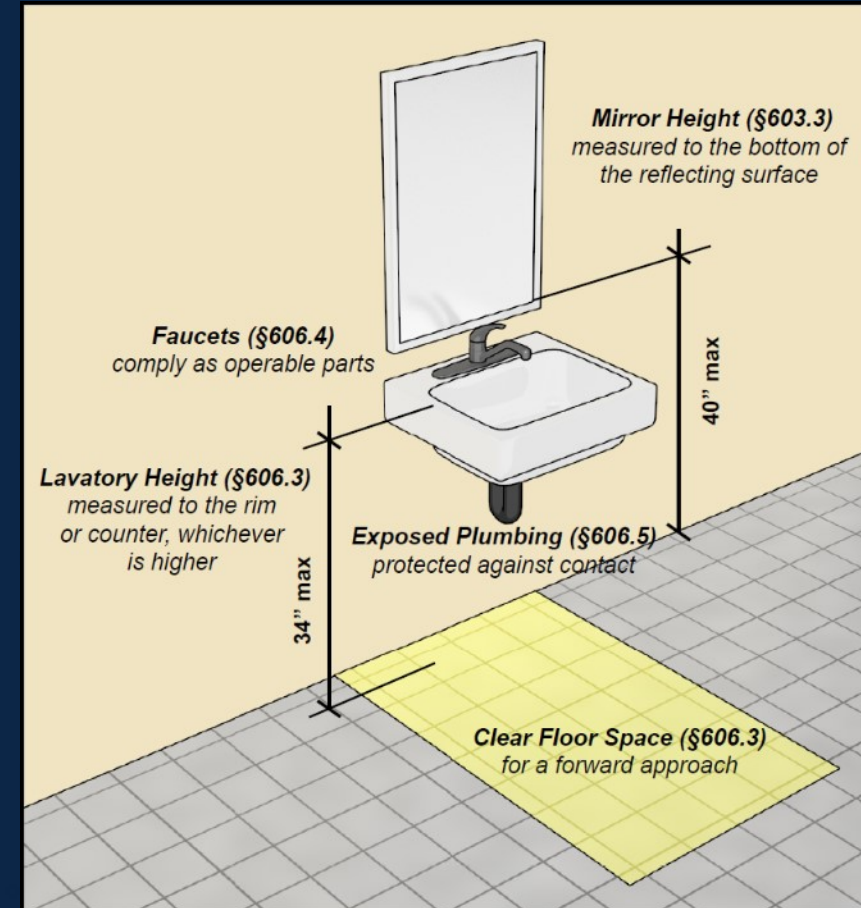
Urinal Clear Floor Space



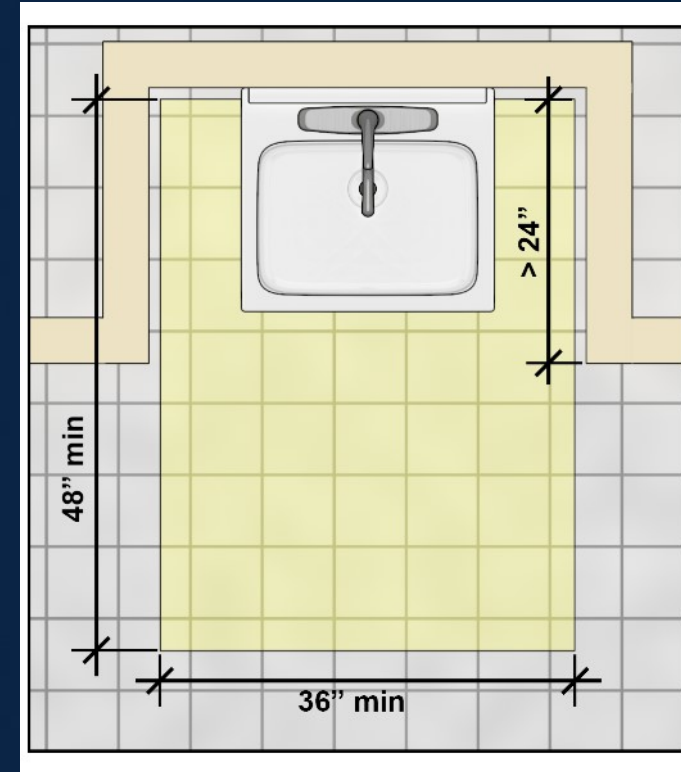
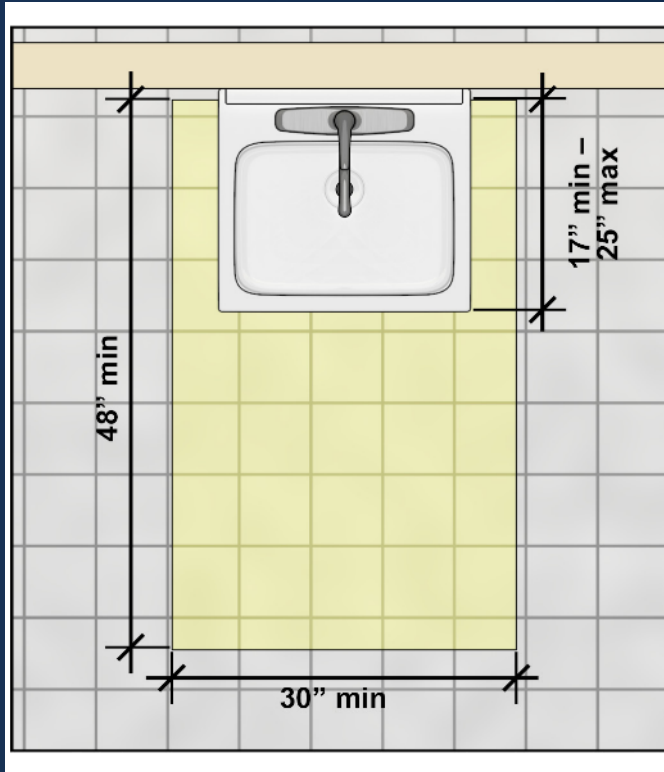
Lavatory Requirements (§213.3.4; §606)

Where lavatories are provided, at least one needs to be accessible and not located in a toilet compartment

- Clear floor space for a forward approach
- Surface Height
- Faucets
- Exposed Pipes and Surfaces
- Mirrors



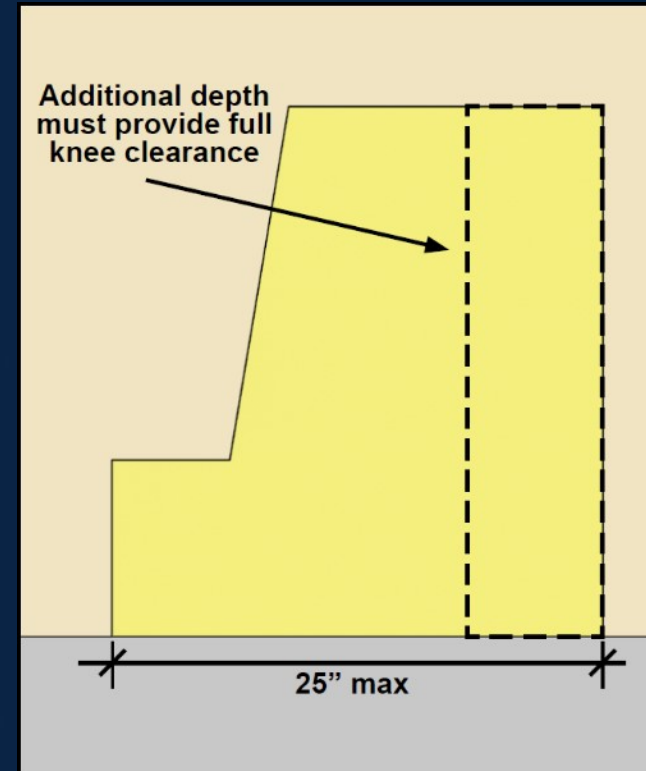
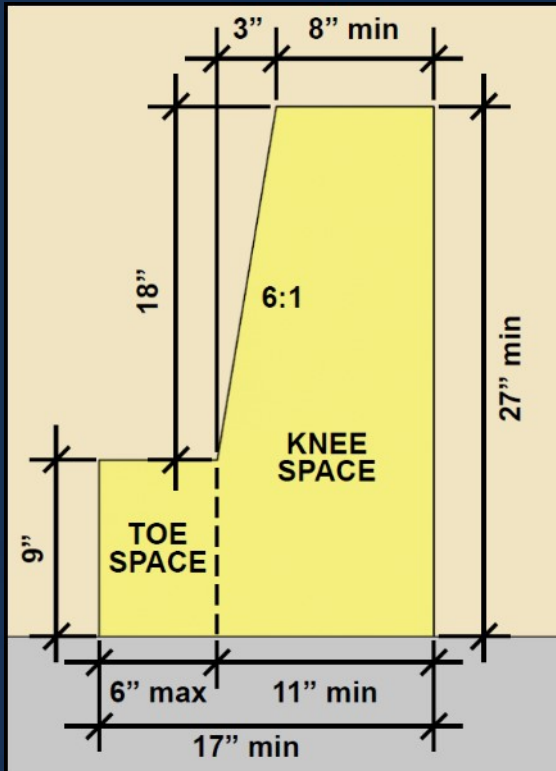
Clear Floor Space (§305)



Clear floor space must underlie the bowl, faucet controls, and other operable parts.

Recommendation: center the clear floor space to the lavatory

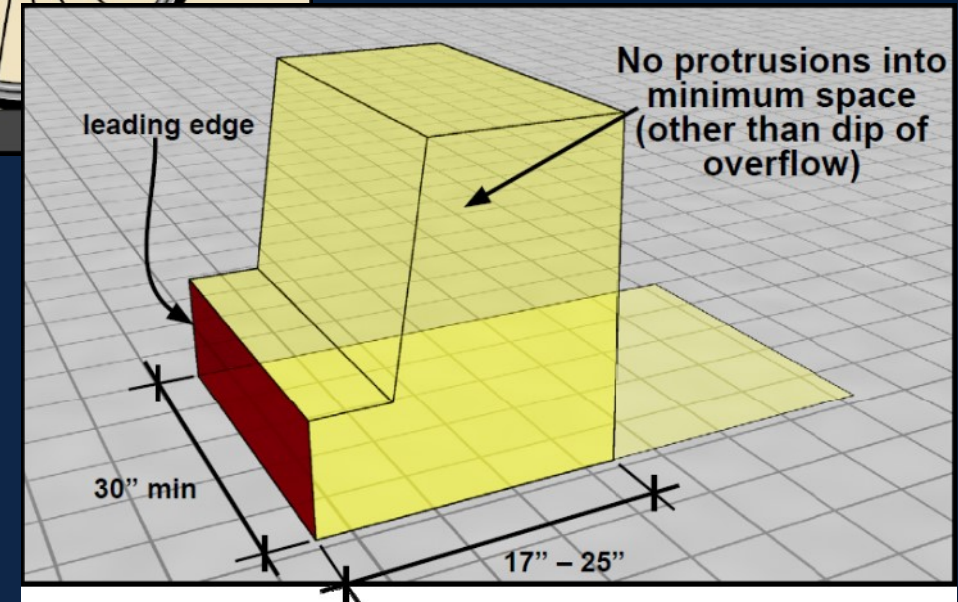
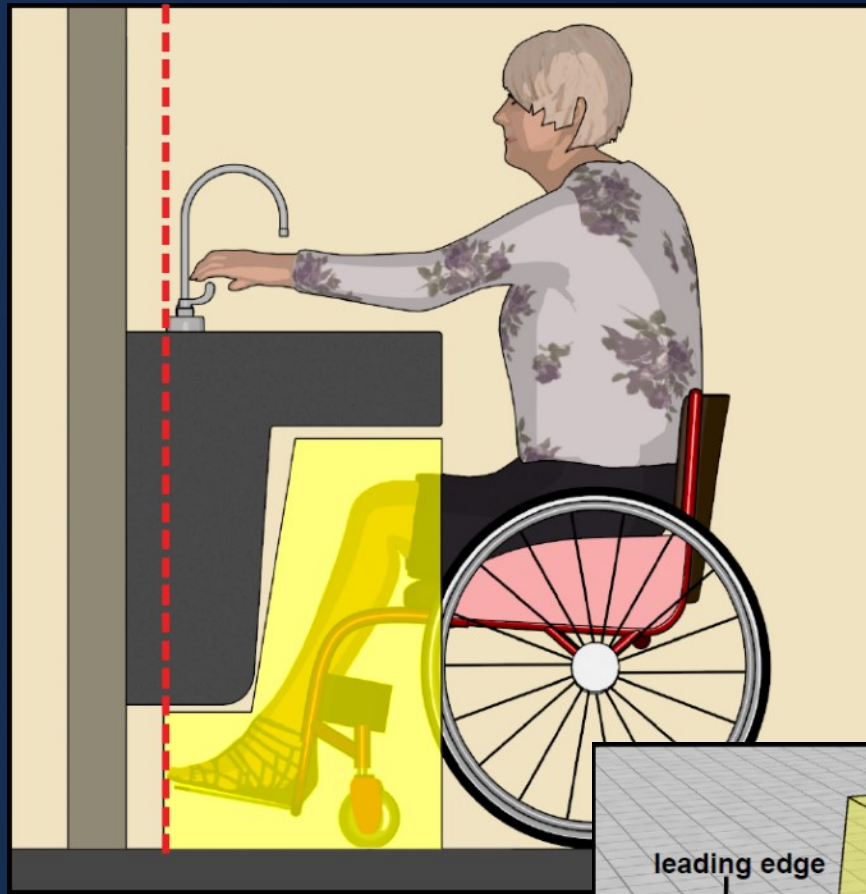
Knee and Toe Clearance (§306)



Knee and Toe space must extend between 17" and 25" under the lavatory or sink

Knee and Toe Space Reach Depth

Knee and toe space depth must equal or exceed depth of reach to operable parts



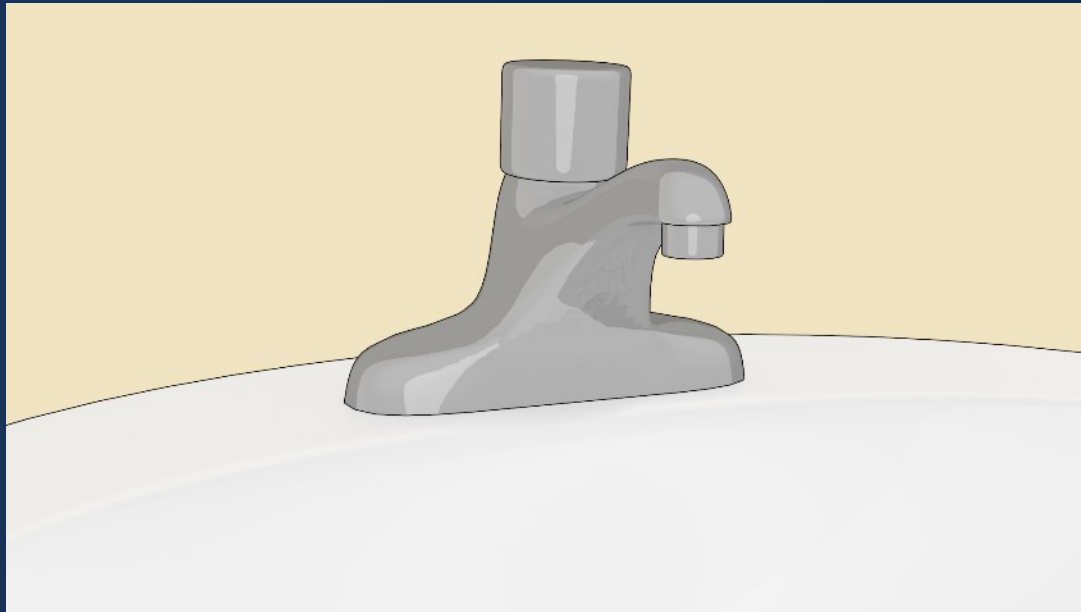
Operable Parts (§205, §309)

Faucet controls, soap dispensers, and other elements that require manual operation must be:

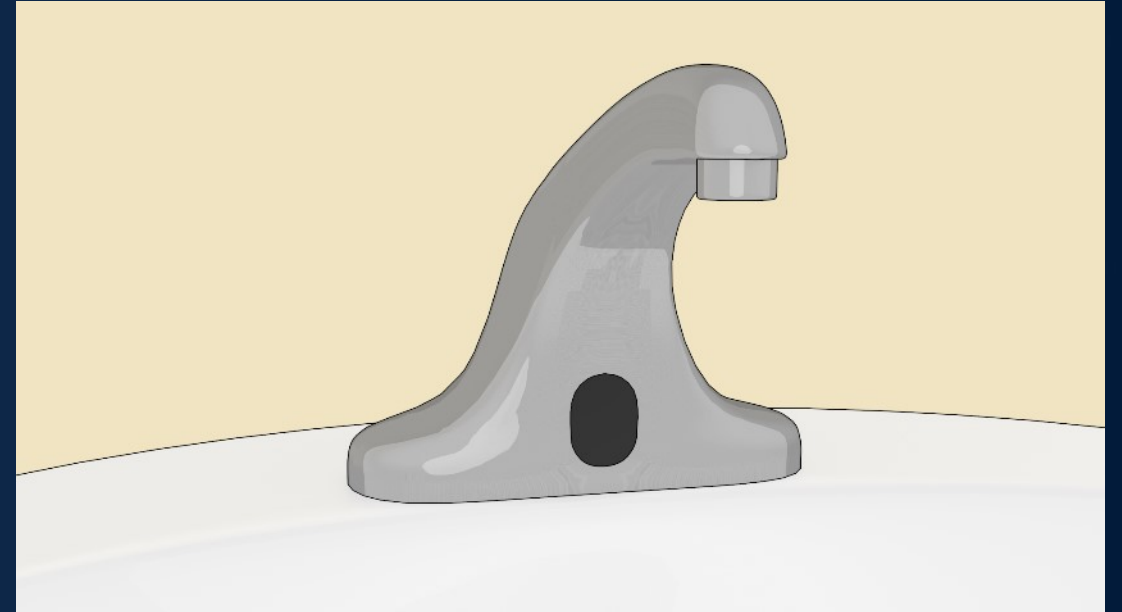
- Located within reach range of a clear floor space
- Usable with one hand and not require tight grasping, pinching, or twisting of the wrist, or more than five pounds force (lbf) to operate



Faucets (§606.4)



Metering faucets with manual or touch controls must remain open for at least 10 seconds



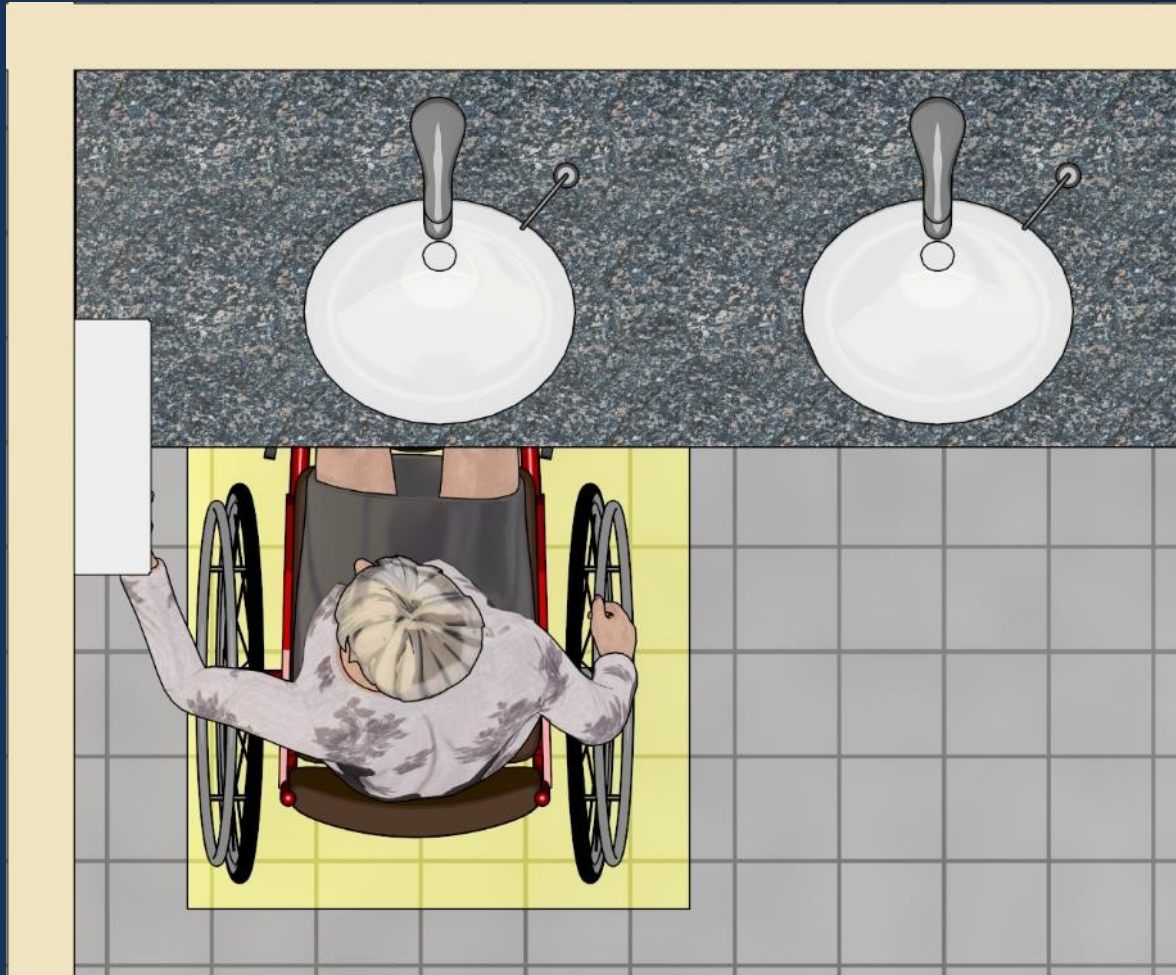
Motion-activated or touch-free faucets do not have to remain active for a minimum amount of time



Exposed Pipes and Surfaces (§606.5)

- Must be insulated, enclosed, or configured to prevent injury or burns
- Cannot be sharp or abrasive surfaces under lavatories and sinks
- Enclosures cannot obstruct knee and toe space clearance

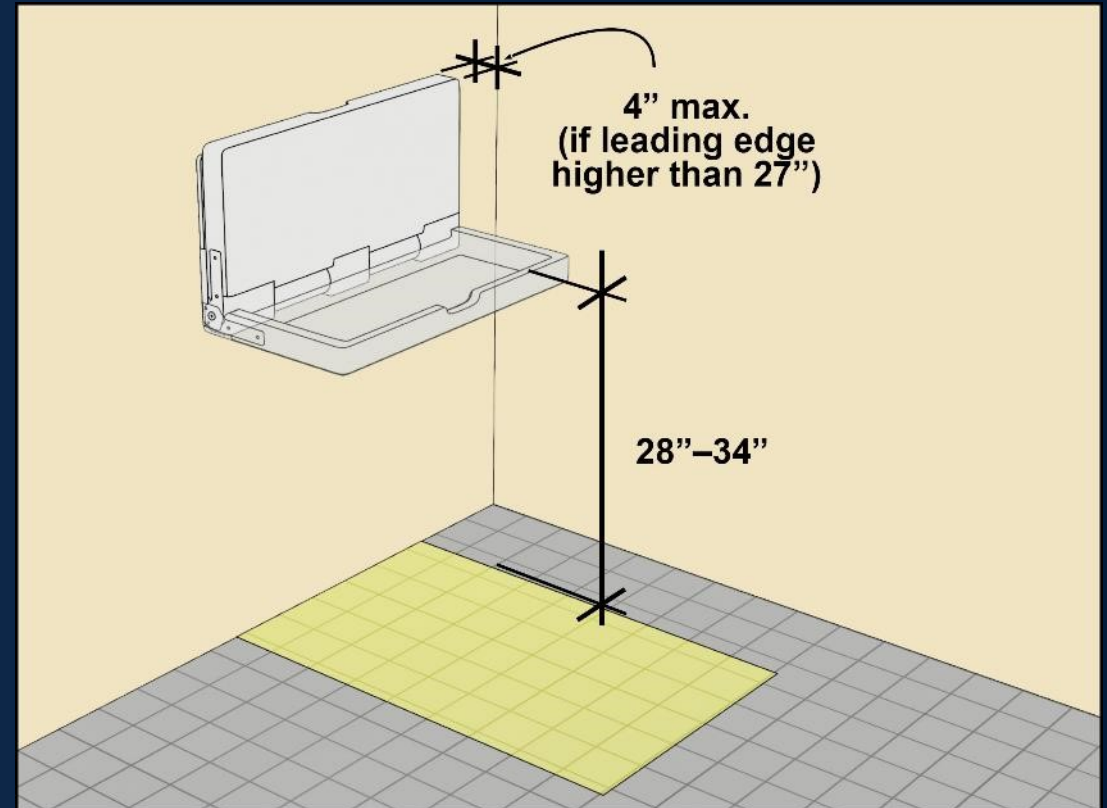
Dispenser Location



Recommendation:
Towel dispensers should be usable at the accessible lavatory so that people do not need to operate mobility devices with wet hands.

Baby Changing Tables

- Compliant operable parts (§205, §309)
- Compliant as protruding object (when stowed) (§204, §307)
- Compliant work surface with forward approach clear floor space (§305, §902)



Signs (§216, §703)

If provided:

- Must include ISA if not all toilet rooms are accessible (§216.8, §703.7.2.1)
- Directional signs must comply with requirements for visual characters (§216.3, §703.5)
- Designation/identifying signs must comply with requirements for visual and tactile characters (§216.2, §703.1 – §703.5)
- Pictograms identifying space must have text descriptors meeting requirements for visual and tactile characters (§216.2, §703.6)





U.S. Access Board

(800) 872-2253 (voice)

(800) 993-2822 (TTY)

E-mail: ta@access-board.gov

www.access-board.gov