

Appendix K. Field Photographs

ORD Waters of the US Delineation



Photo 1. Bensenville Ditch - Section 1, General site



Photo 2. Bensenville Ditch - Section 1, General site, View to the southeast



Photo 3. Bensenville Ditch - Section 1, Box culvert. View to the southwest

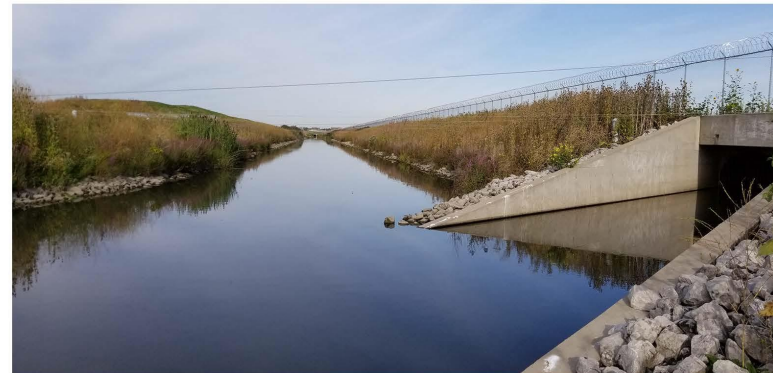


Photo 4. Bensenville Ditch - Section 2, General site, east end. View to the west

ORD Waters of the US Delineation



Photo 5. Bensenville Ditch - Section 2, General site, west end. View to the east



Photo 6. Bensenville Ditch - Section 2, General site, west end. View to the west



Photo 7. Bensenville Ditch - Section 2, East end, double culvert exit. View to the east



Photo 8. Bensenville Ditch - Section 2, East end, double culvert. View to the north

ORD Waters of the US Delineation



Photo 9. Bensenville Ditch - Section 2, General site, side culvert. View to the north



Photo 10. Crystal Creek - Section 1, General site, View to the south



Photo 11. Crystal Creek - Section 1, General site, outfall. View to the north



Photo 12. Crystal Creek - Section 1, General site, View to the south

ORD Waters of the US Delineation



Photo 13. Crystal Creek - Section 1, General site, View to the north



Photo 14. Crystal Creek - Section 2, General site, View to the south



Photo 15. Crystal Creek - Section 2, General site, View to the north



Photo 16. Crystal Creek - Section 2, General site, culvert exit. View to the southeast

ORD Waters of the US Delineation



Photo 17. Crystal Creek - Section 3, General site, View to the north



Photo 18. Crystal Creek - Section 3, Box culvert under Manheim Road



Photo 19. Crystal Creek - Section 4, General site, View to the north



Photo 20. Crystal Creek - Section 4, General site, boom. View to the southeast

ORD Waters of the US Delineation



Photo 21. Crystal Creek - Section 4, Box culvert under I294. View to the east



Photo 22. Crystal Creek - Section 4, Culvert View to the north



Photo 23. Crystal Creek - Section 4, General site, View to the south



Photo 24. Crystal Creek - Section 4, General site, View to the north

ORD Waters of the US Delineation



Photo 25. Ditch 01, South culvert, View to the east



Photo 26. Ditch 01, General site, View to the south



Photo 27. Ditch 01, South culvert, View to the west



Photo 28. Ditch 01, General site, View to the north

ORD Waters of the US Delineation



Photo 29. Ditch 02, General site, View to the south



Photo 30. Ditch 02, General site, View to the east



Photo 31. Ditch 03, General site, View to the east



Photo 32. Ditch 03, General site, View to the west

ORD Waters of the US Delineation



Photo 33. Ditch 03, East culvert



Photo 34. Ditch 03, West culvert



Photo 35. Ditch 04, General site, north section. View to the north



Photo 36. Ditch 04, General site, south section. View to the north

ORD Waters of the US Delineation



Photo 37. Ditch 05, Side ditch. View to the south



Photo 38. Ditch 06, Culvert



Photo 39. Ditch 06, General site, View to the southwest



Photo 40. Ditch 07, General site, View to the south

ORD Waters of the US Delineation



Photo 41. Ditch 08, General site, View to the north



Photo 42. Ditch 08, General site, View to the north



Photo 43. Ditch 08, General site, View to the south



Photo 44. Ditch 09, General site, View to the north

ORD Waters of the US Delineation



Photo 45. Ditch 09, Wracking



Photo 46. Ditch 09, Culverts in south section



Photo 47. Ditch 09, Culvert in north section. View to the north



Photo 48. Ditch 10, General site, View to the east

ORD Waters of the US Delineation



Photo 49. Ditch 10, General site, View to the east



Photo 50. Ditch 11, General site, View to the east



Photo 51. Ditch 11, General site, View to the west



Photo 52. Ditch 11, General site, View to the west

ORD Waters of the US Delineation



Photo 53. Ditch 12, General site, View to the east



Photo 54. Ditch 12, Culverts in east end. View to the east



Photo 55. Ditch 12, General site, View to the west



Photo 56. Ditch 12, General site, north culvert entrance. View to the north

ORD Waters of the US Delineation



Photo 57. Ditch 13 - Section 2, Left bank slumping. View to the north



Photo 58. Ditch 13 - Section 2, General site, View to the west



Photo 59. Ditch 13 - Section 2. Twin culvert, View to the north



Photo 60. Ditch 13 - Section 2, General site, View to the north

ORD Waters of the US Delineation



Photo 61. Ditch 14, General site, View to the south



Photo 62. Ditch 14, General site, View to the north



Photo 63. Ditch 14, General site, View to the north



Photo 64. Ditch 14, General site, View to the south

ORD Waters of the US Delineation



Photo 65. Ditch 15, General site, View to the north



Photo 66. Ditch 16, General site, View to the south



Photo 67. Ditch 17, General site, View to the north



Photo 68. Ditch 18, Wracking. View to the south

ORD Waters of the US Delineation



Photo 69. Ditch 18, General site, View to the east



Photo 70. Ditch 19, Downstream, View to the north



Photo 71. Ditch 20, Ditch exit to Willow creek, View to the east



Photo 72. Ditch 20, Headcut erosion, View to the north

ORD Waters of the US Delineation



Photo 73. Ditch 20, Landscaped ditch section. View to the north



Photo 74. Ditch 21, General site, View to the north



Photo 75. Ditch 21, General site, View to the north



Photo 76. Ditch 22, General site, View to the east