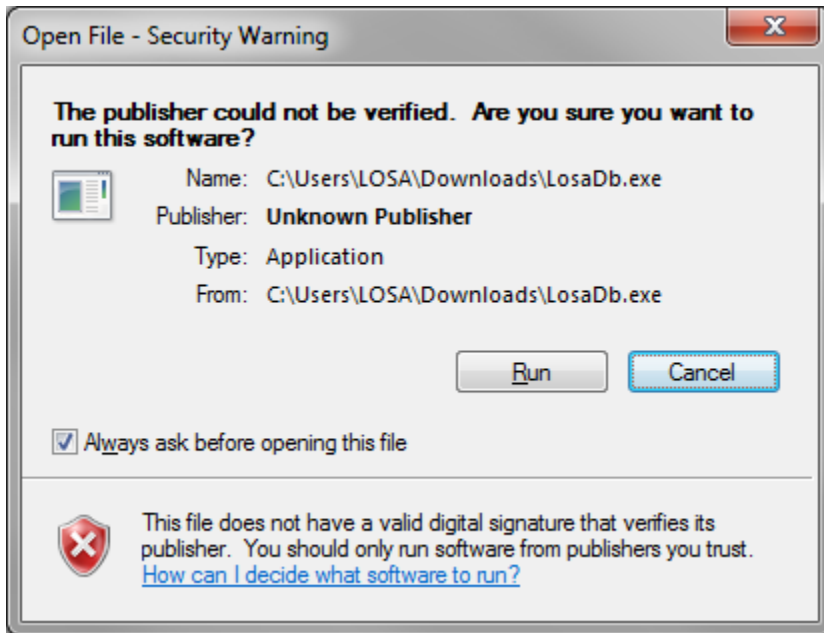




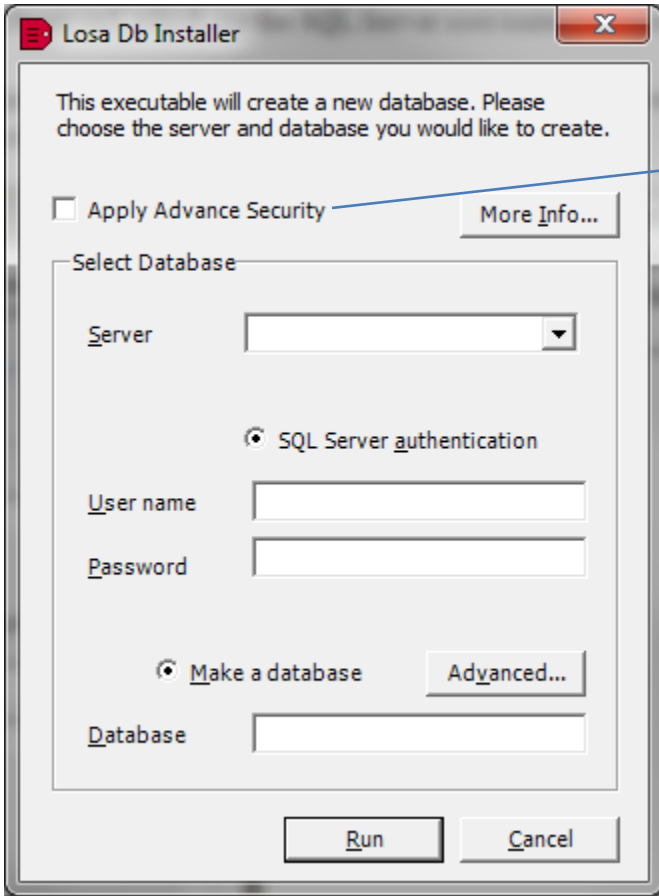
**LOSA Database (DB) and Application Installation Instruction
Manual
PCMS**

LOSA Database (DB) Installation:



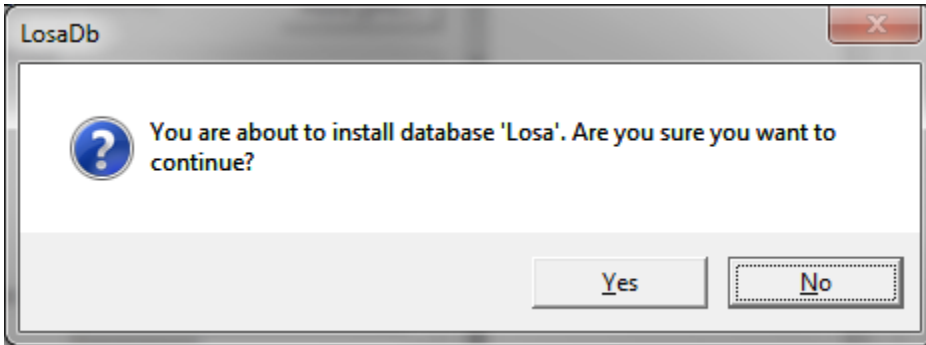
The first screen to start “LOSA DB” install – Click ‘Run’ to start installing the Losa Database, i.e. Losa DB

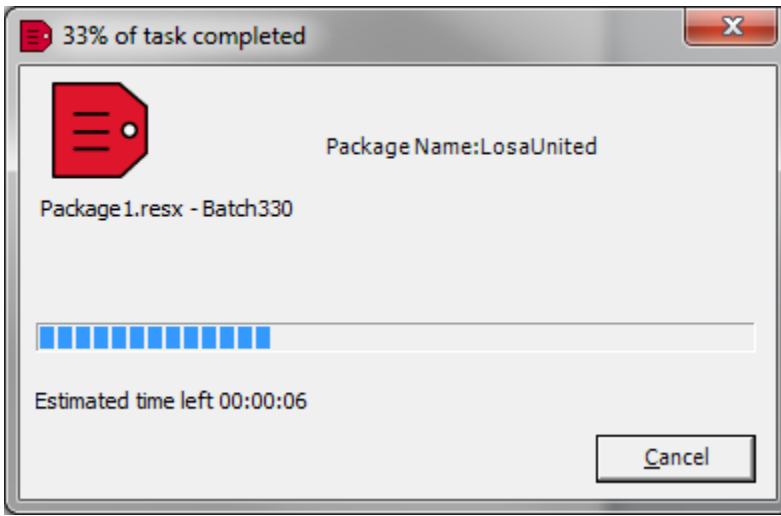
- Enter your Server name (this is the SQL Server name that you will provide in the Server dropdown)
- Enter the User name and Password, which are the SQL Server user name/password that you specify during SQL Server Install
- Please contact your company’s IT Support for more information about your Server name
- Click ‘Run’ to start DB installation



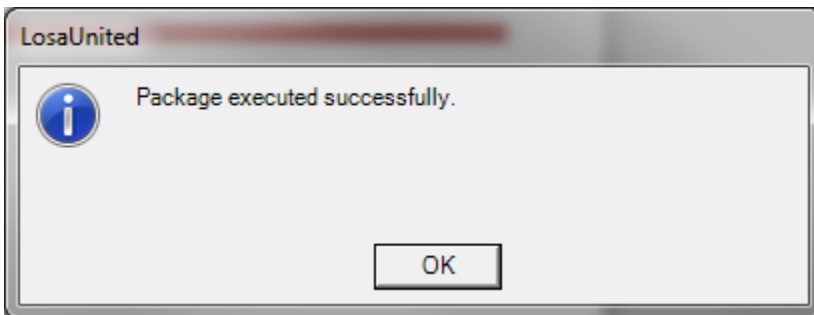
Check "Apply Advance Security" ONLY if you want password requirements setup; otherwise leave unchecked

- Click 'Yes' to continue





- Click 'OK' to finish installation of LOSA DB



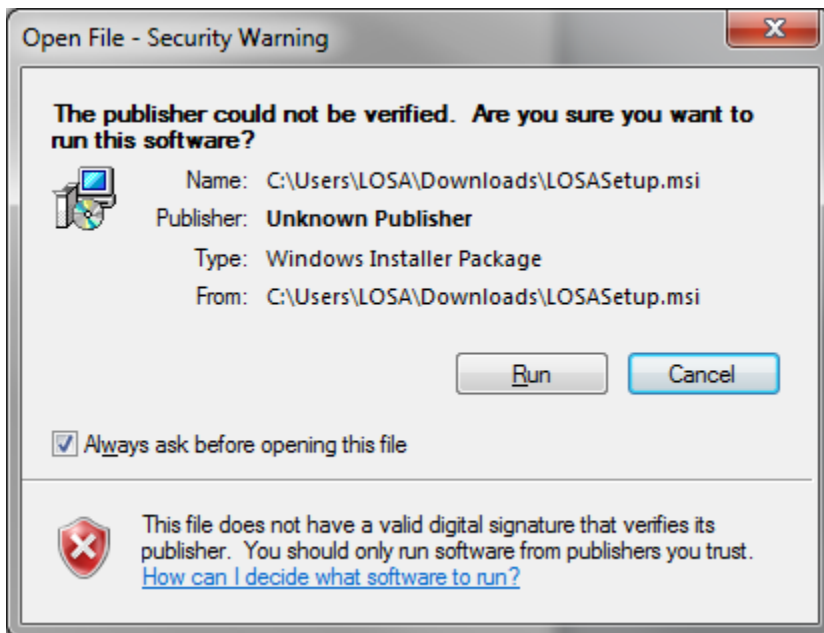
Below are the steps for LOSA Application Install.

NOTE: It is advisable to install LOSA DB prior to this step.

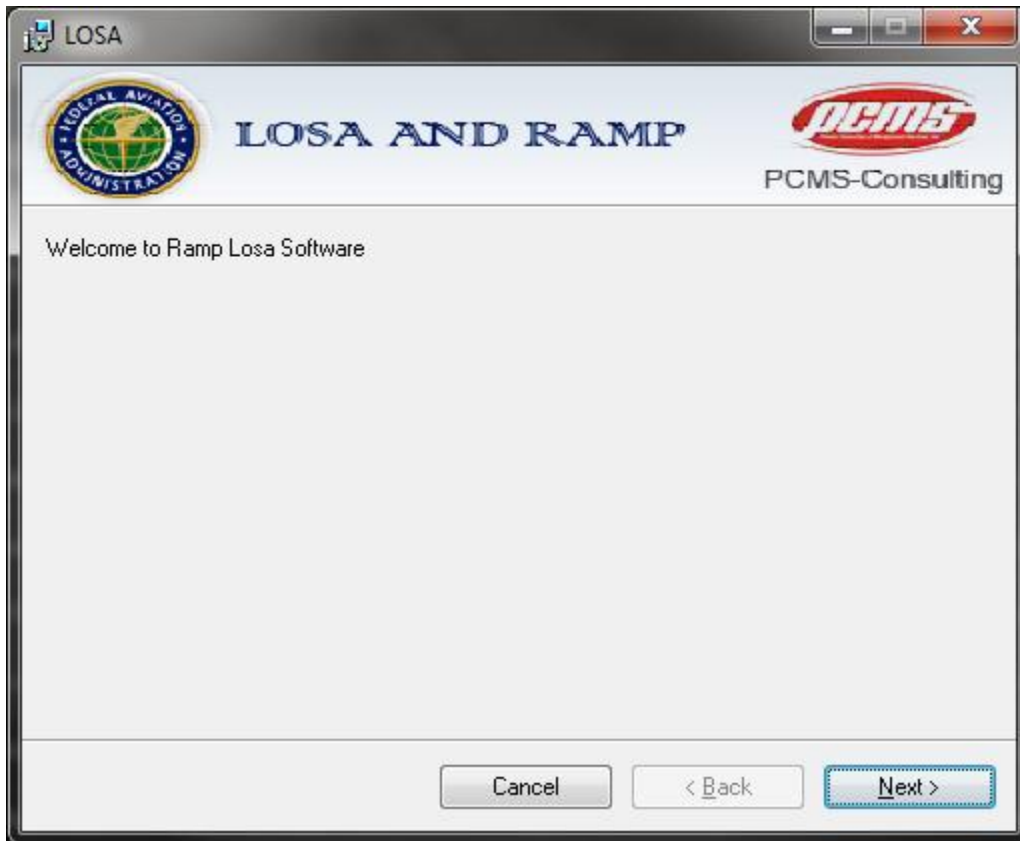
Please ensure LOSA DB is setup and then continue with LOSA Application Setup Install

LOSA SETUP.msi Installation:

- Click 'Run' to start setup for LOSA Application



- Click 'Next' to continue



- Please Enter your Server name (this is the SQL Server name that you will provide in the Server dropdown)
- Enter the User ID and Password, which are the SQL Server user name/password that you specify during SQL Server Install
- Please enter the Database Name, the database that you specified in the Losa Database installation – this can be found under ‘Databases’ in your SQL Management Studio
- Please contact your company’s IT Support for more information about your Server name
- Click ‘Next’ to continue

LOSA Database & Application Installation Instructions

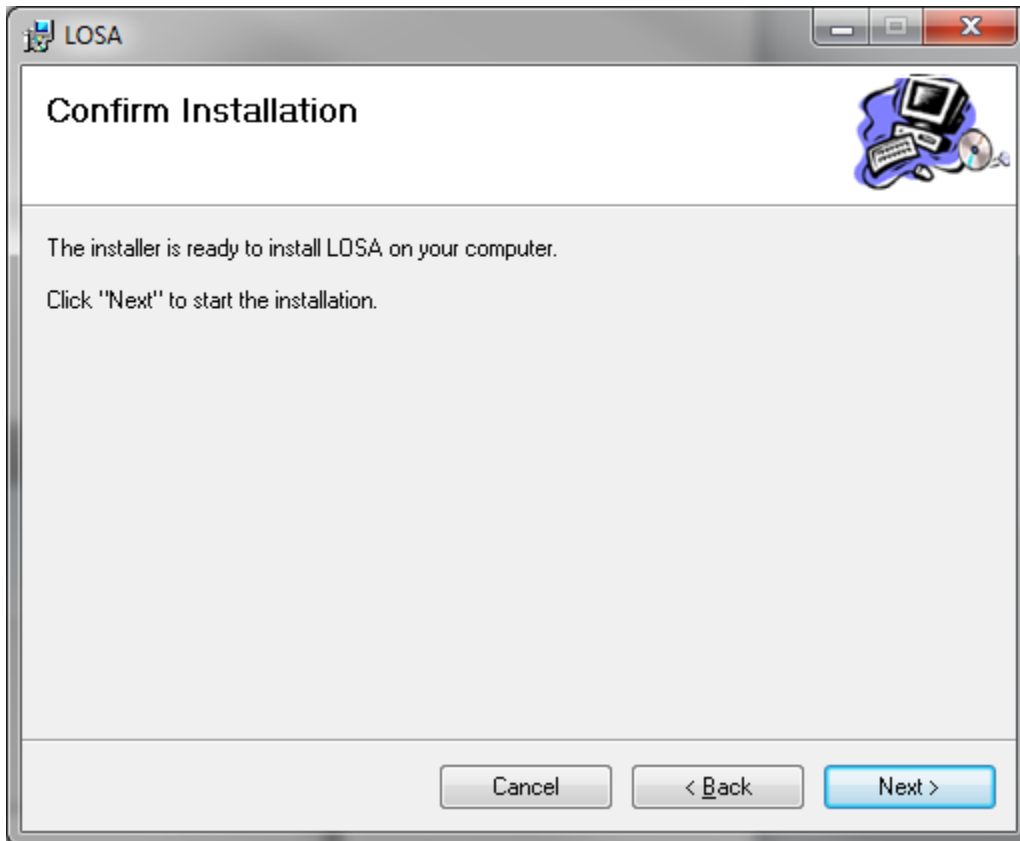


Premier Consulting & Management Services, Inc.

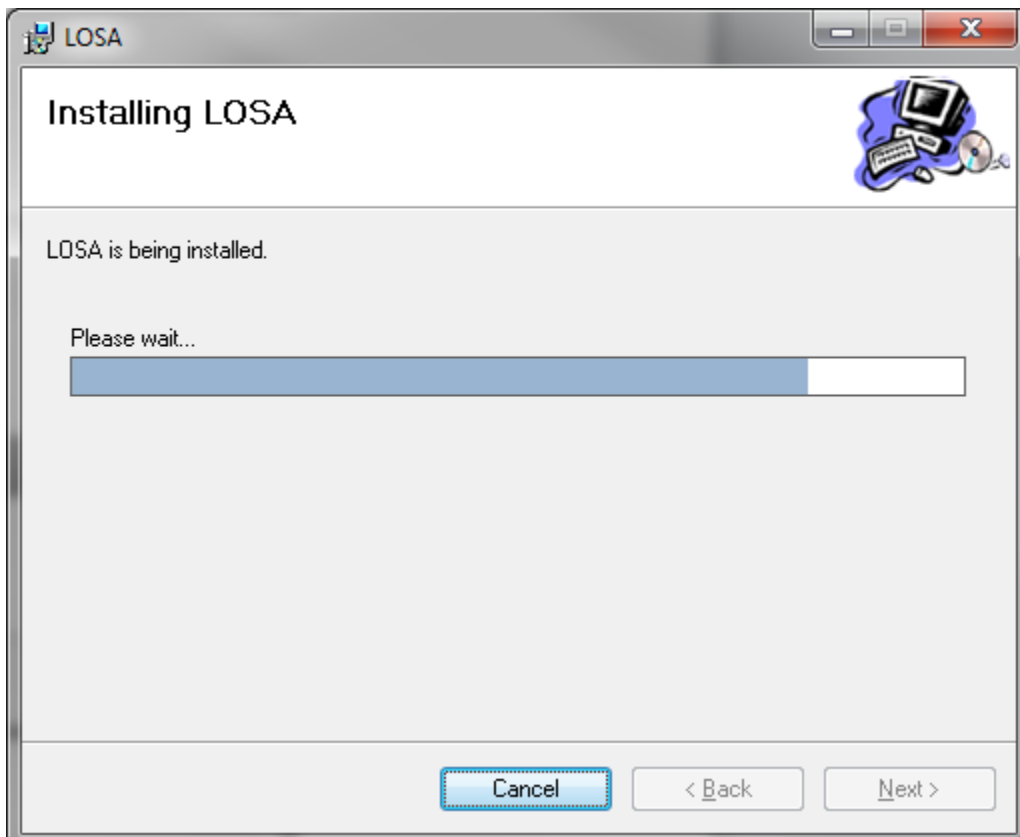
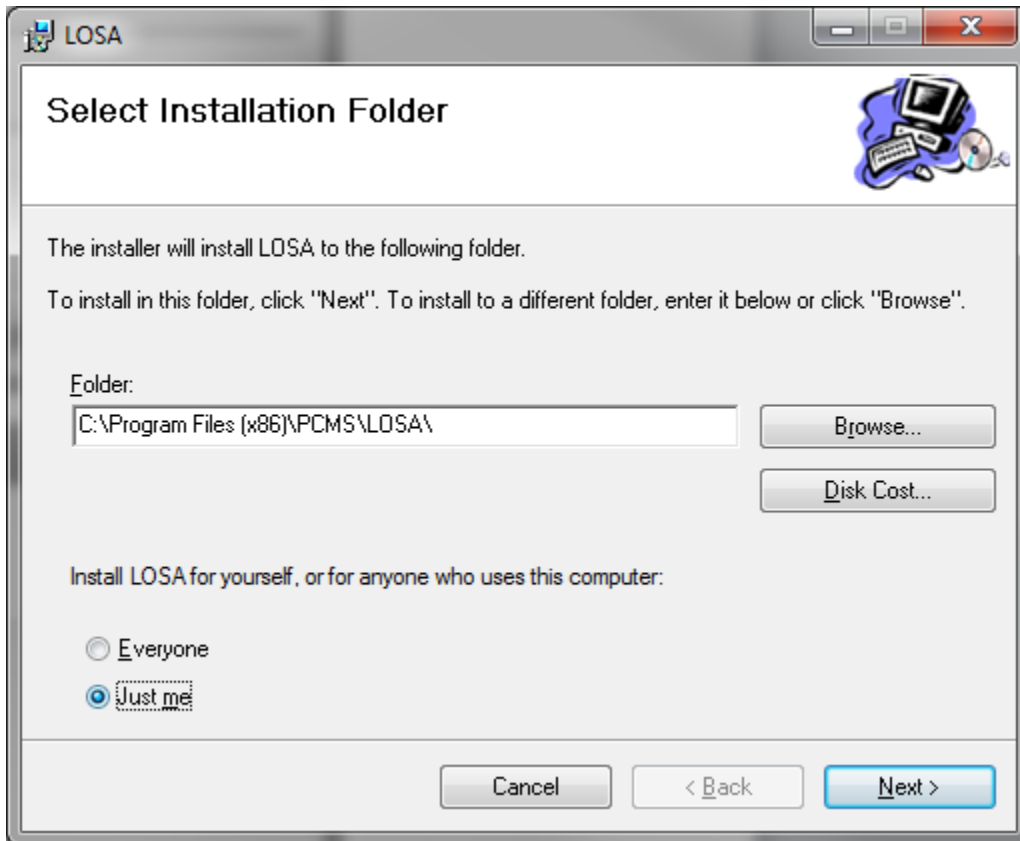
A screenshot of a Windows-style application window titled "LOSA". The window contains the following elements:

- Top left: A small icon of a computer monitor and the text "LOSA".
- Top center: The text "LOSA AND RAMP" in a large, blue, serif font.
- Top right: The PCMS logo and the text "PCMS Consulting".
- Below the title bar: The text "Please enter your database information".
- Four input fields, each with a label to its left:
 - "Server Name:" followed by a white text box.
 - "User Id:" followed by a white text box.
 - "Password:" followed by a white text box.
 - "Database Name:" followed by a white text box.
- Bottom: Three buttons: "Cancel", "< Back", and "Next >". The "Next >" button is highlighted in blue.

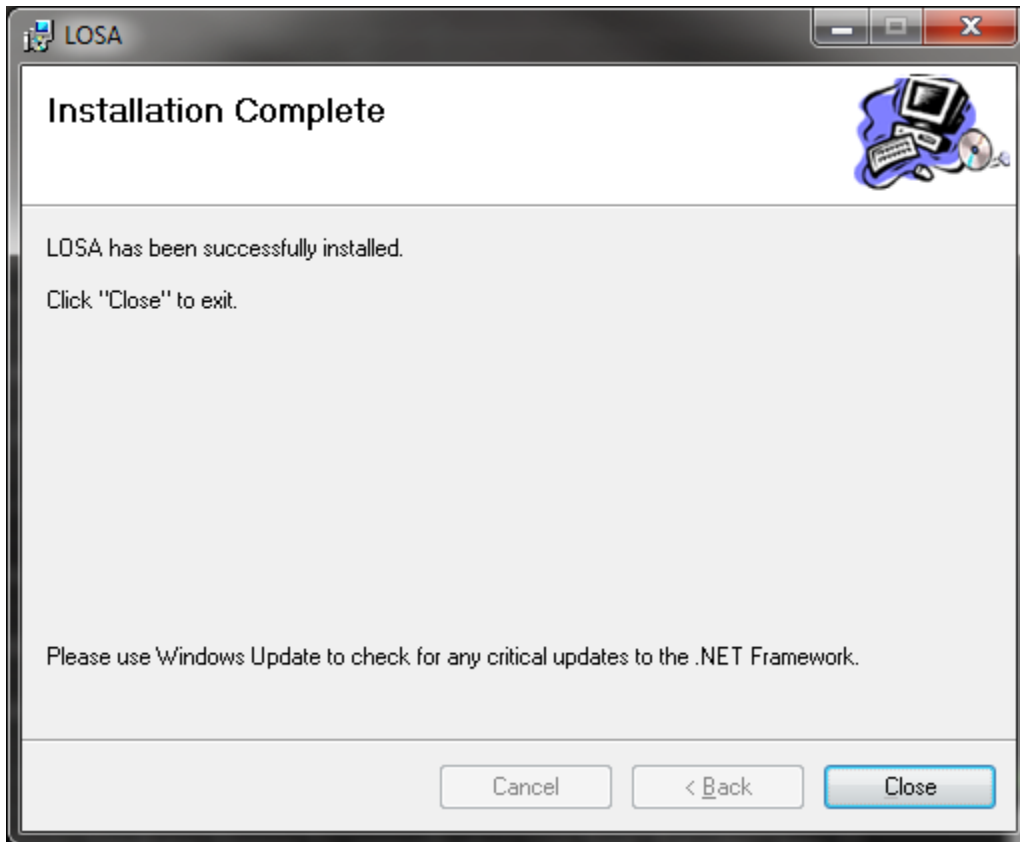
- Click 'Next' to start the LOSA Application Install

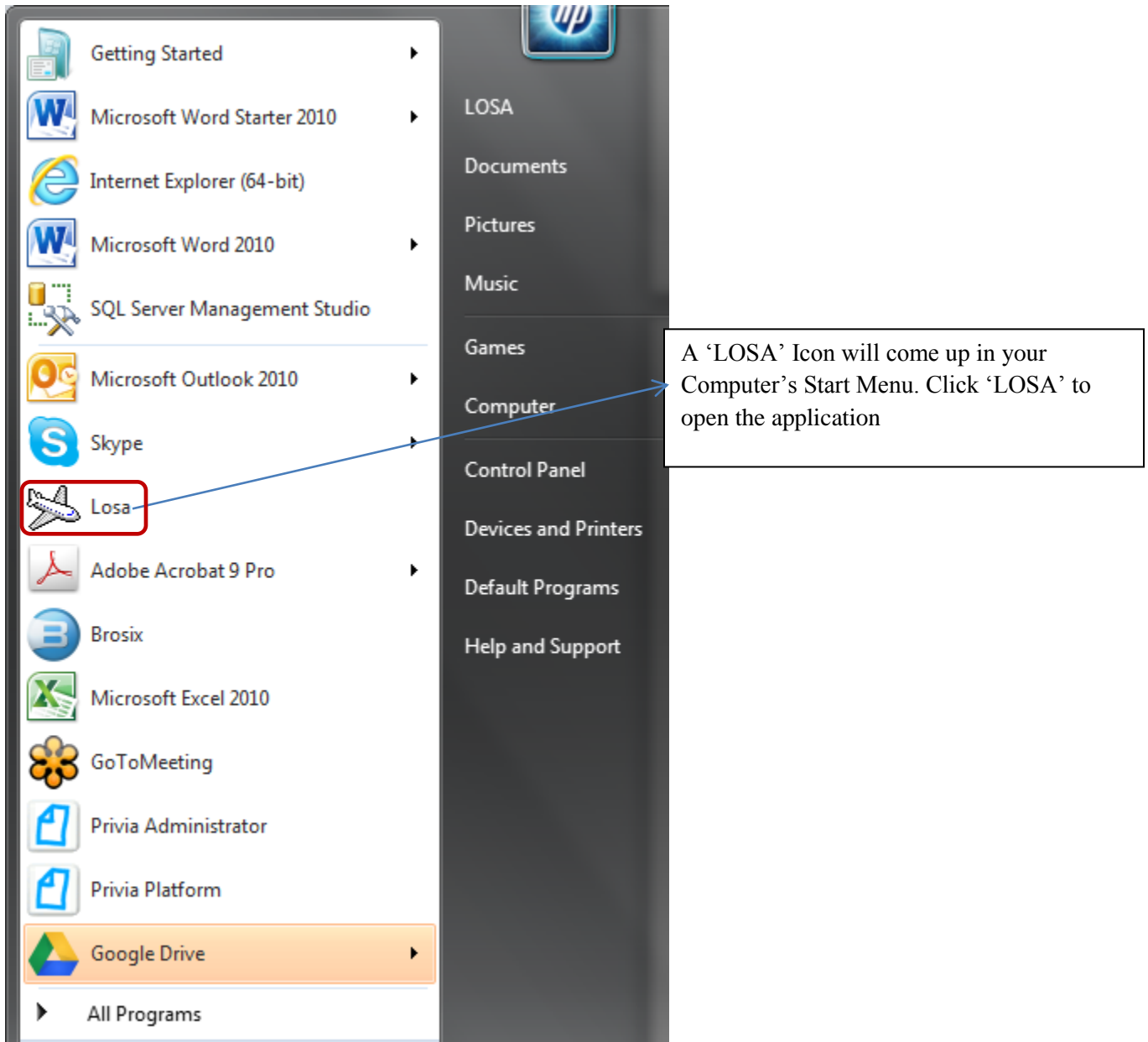


- Select the folder where you want to save the LOSA Setup file on your computer



- Click 'Close' to complete and confirm Installation





- A Welcome Screen will pop up after clicking the 'LOSA' application icon with the updated Version number
- Enter your User ID for Admin 'admnlosa' with Password: 'x1234'

LOSA Database & Application Installation Instructions



Premier Consulting & Management Services, Inc.

A screenshot of a Windows-style login window titled "Log-in". The window has a title bar with minimize, maximize, and close buttons. The main content area is light gray and contains the following elements:

- Welcome To LOSA Observation Database**: A centered heading.
- User ID**: A label to the left of a white text input field.
- Password**: A label to the left of a white text input field.
- Log In**: A blue button with white text.
- Exit**: A gray button with black text.
- LOSA Version- 1.0.0.1 B**: Text in the bottom left corner.
- [Help Reference](#): A blue underlined hyperlink in the bottom right corner.