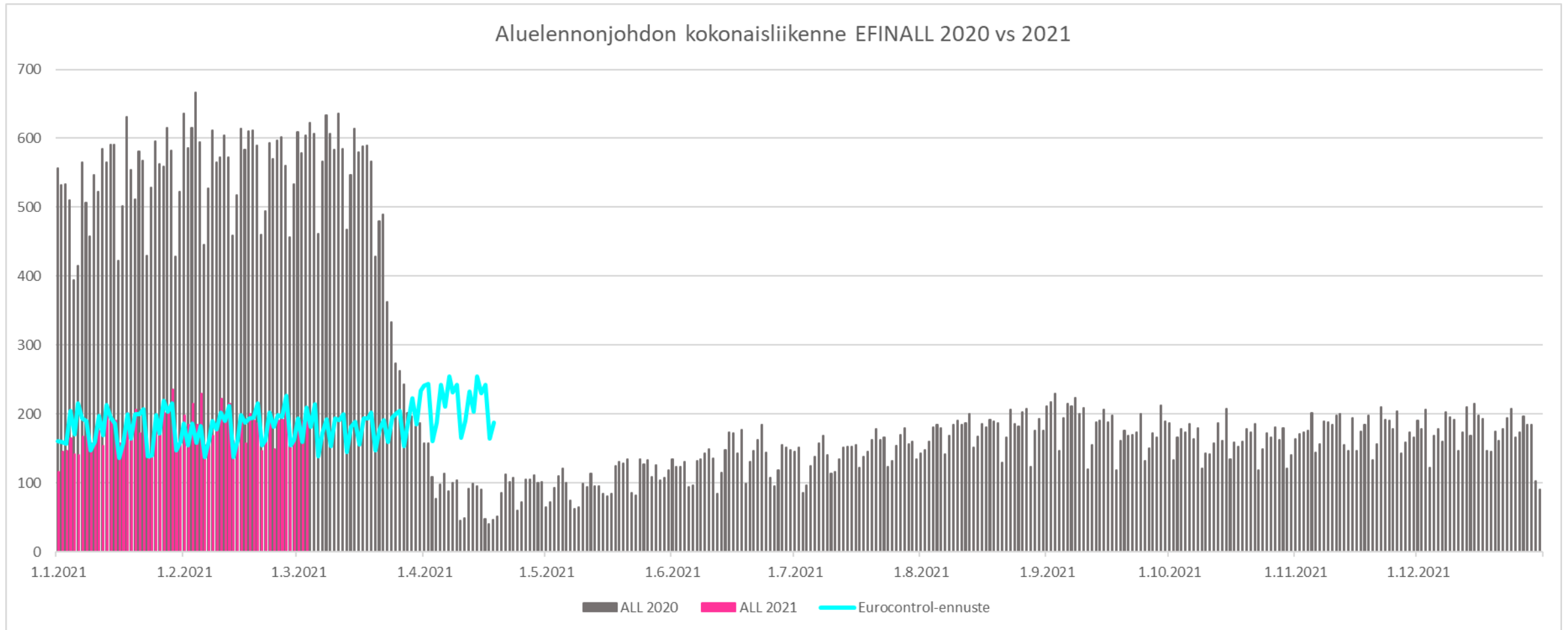


# CPWG / 29

# Fintraffic ANS update

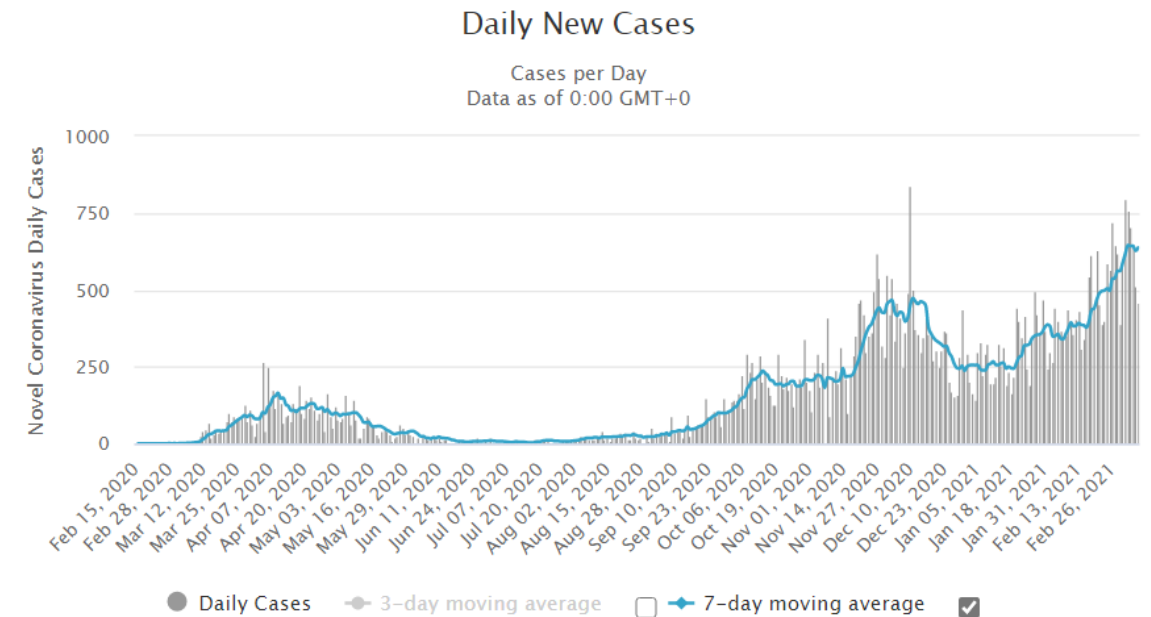


# Helsinki ACC daily traffic 2020 vs. 2021



# Covid -19 status and travel restrictions in Finland

- COVID -19 situation has gone worse during past months
- During reporting period (22–28 February), Finland recorded the highest number of new cases since the start of the epidemic.
- The incidence of new cases over the last 14-day period was 134 per 100,000 inhabitants.
- The vaccine rollout is progressing but not as quickly as expected
  - First dose 9% of total population



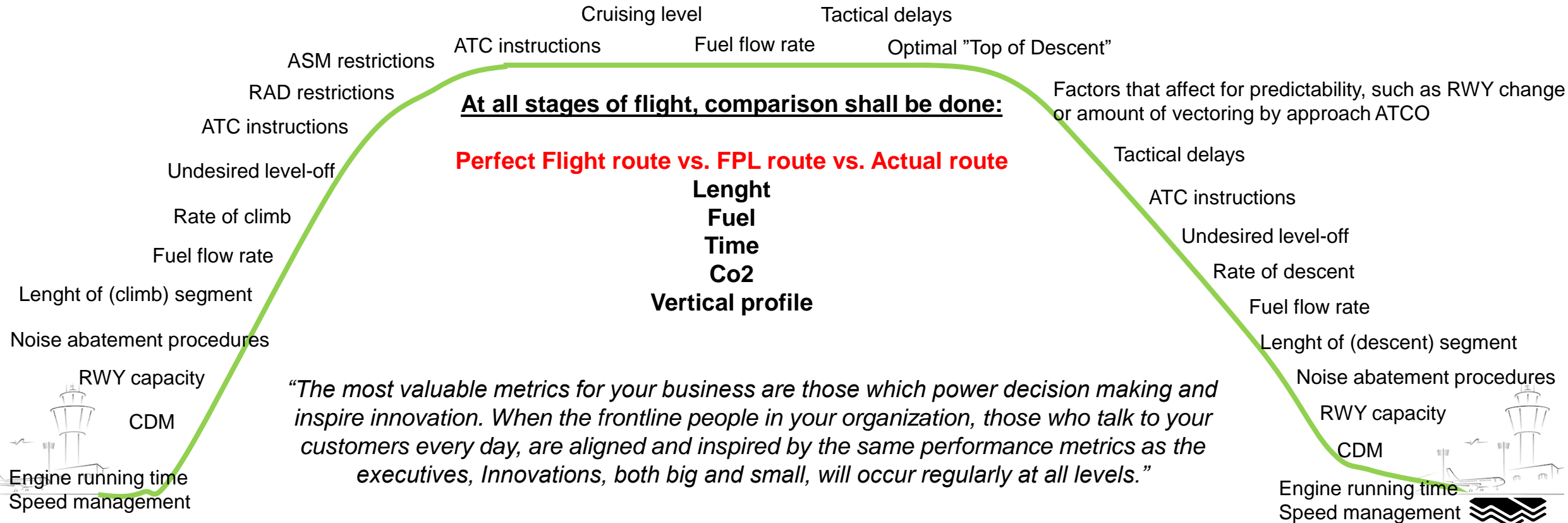
- Restrictions on entry to Finland have been tightened to prevent the spread of the coronavirus epidemic and the new virus variants.
- Entry into Finland is only permitted for necessary and justified reasons, such as studies or family-related reasons
- A negative test result, proof of a passed COVID-19 disease or a certificate of vaccination alone does not entitle a foreign citizen to enter Finland.
- Partial lockdown since 8th March
  - No curfew in place and outdoor movement is not restricted



# Perfect Flight –project in collaboration with Finnair

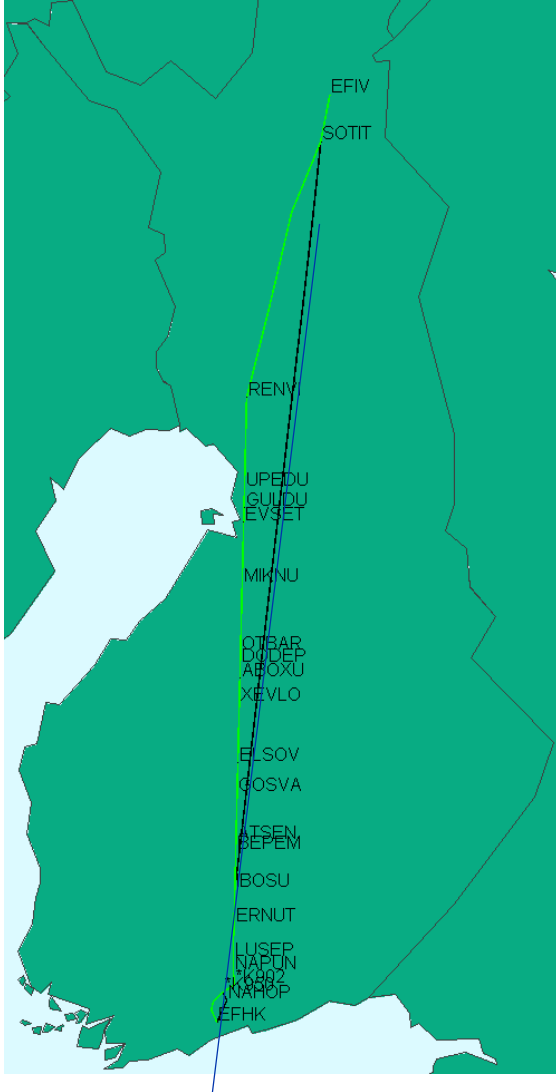
## ATC efficiency metrics

- Optimal use of staffing
- ATC service quality compared to defined standards
- Comparison of planned and actual capacity
- ATC service quality compared to amount and complexity of traffic

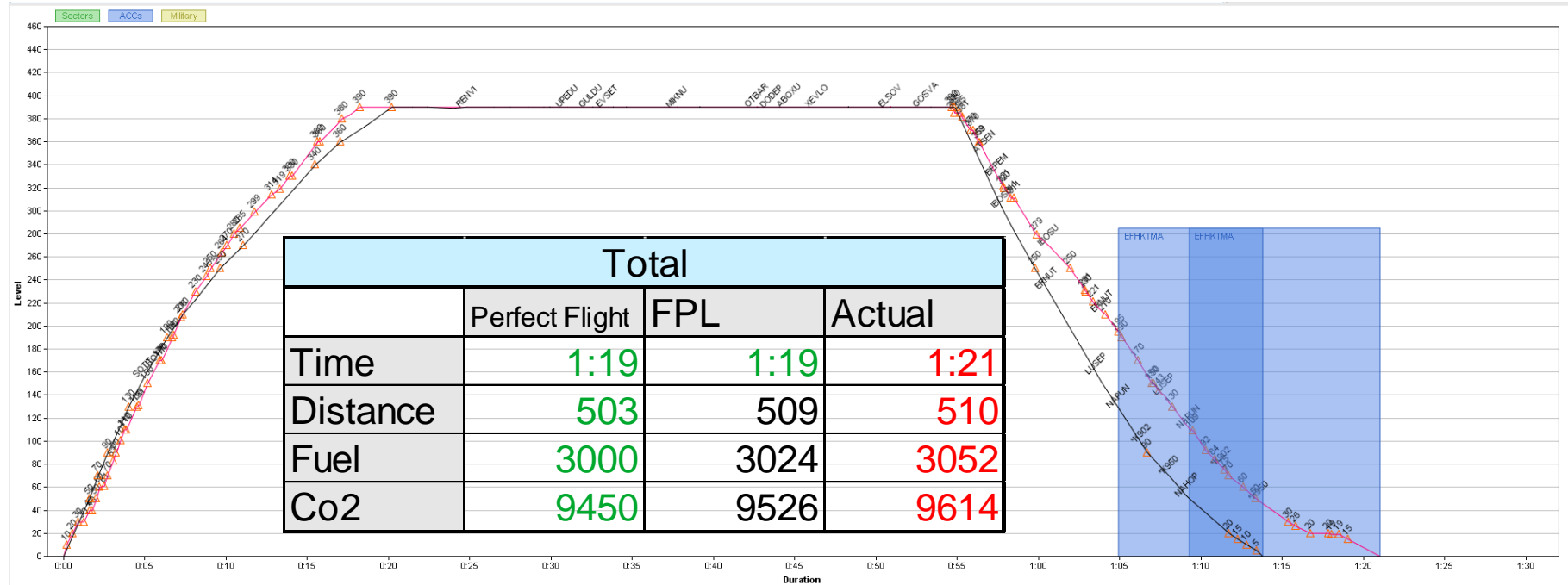


# Perfect Flight –project in collaboration with Finnair

## IVL-HEL A321 AY637/FIN57N STD 1130Z

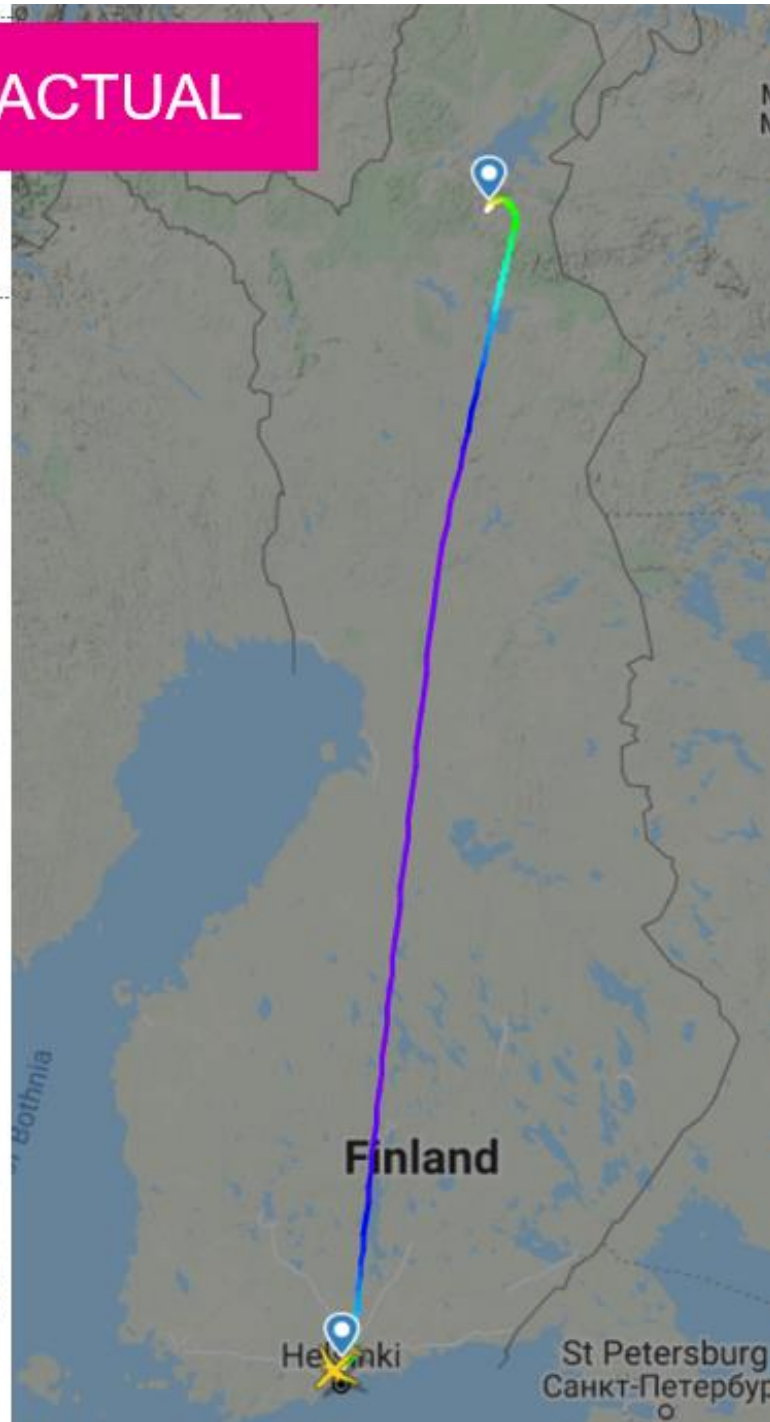
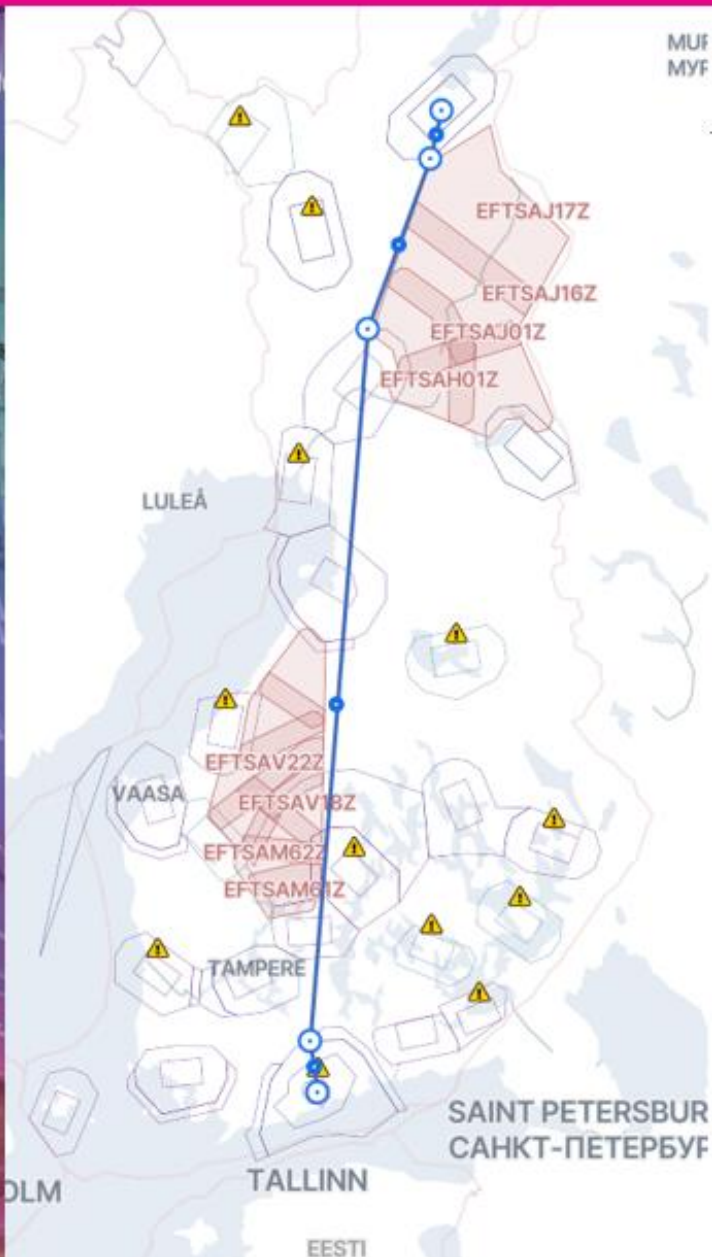
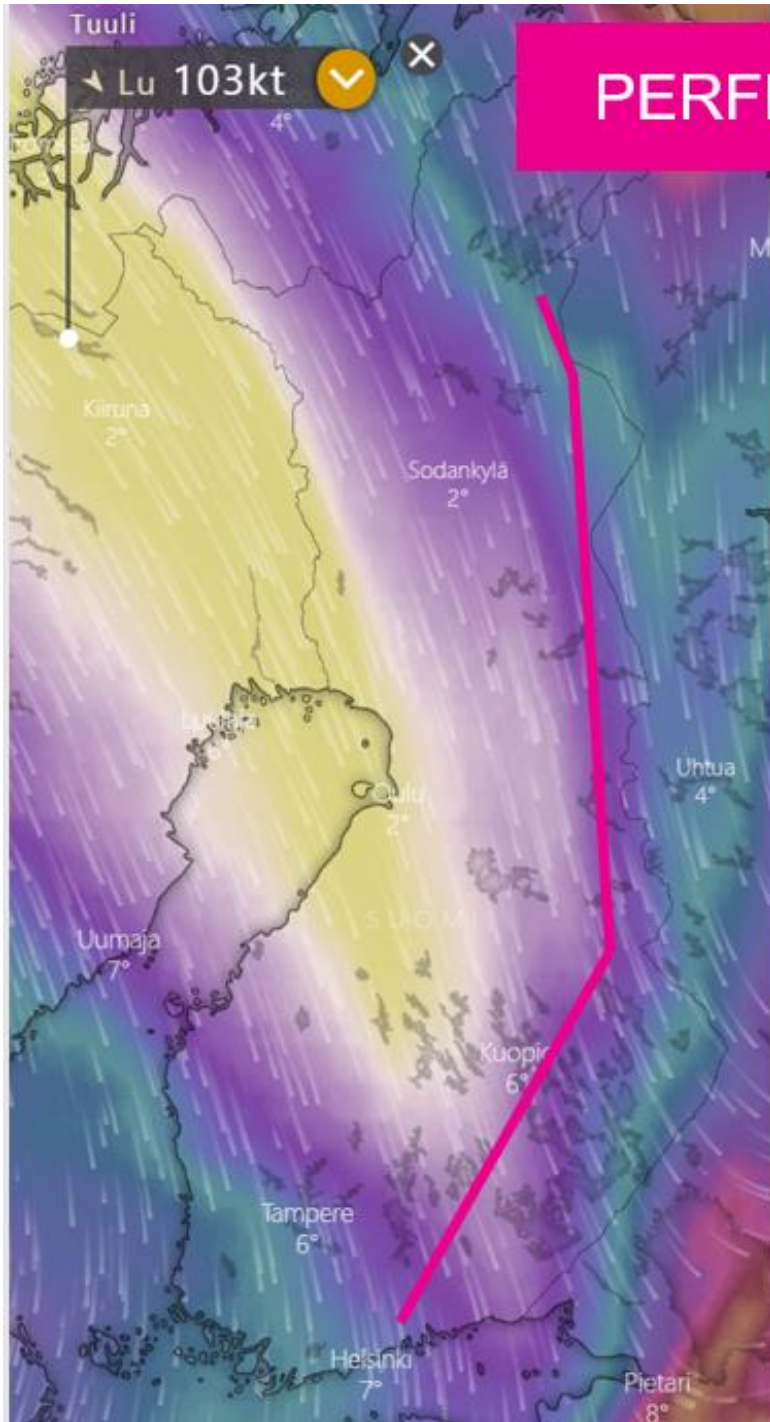


Climb GND-TOC			En-Route			Descent TOD-GND					
	Perfect Flight	FPL	Actual		Perfect Flight	FPL	Actual		Perfect Flight	FPL	Actual
Time	0:16:00	0:18:00	0:18:18	Time	0:37:00	0:35:00	0:35:25	Time	0:26:00	0:26:00	0:27:06
Distance	100	108	109	Distance	273	266	275	Distance	130	135	128
Fuel	1350	1410	1452	Fuel	1240	1188	1162	Fuel	402	413	436
Co2	4253	4442	4574	Co2	3906	3742	3660	Co2	1266	1301	1373





# PERFECT FLIGHT vs. FPL vs. ACTUAL



# Thank you for your attention!

[kimmo.lehtimaki@fintraffic.fi](mailto:kimmo.lehtimaki@fintraffic.fi)

