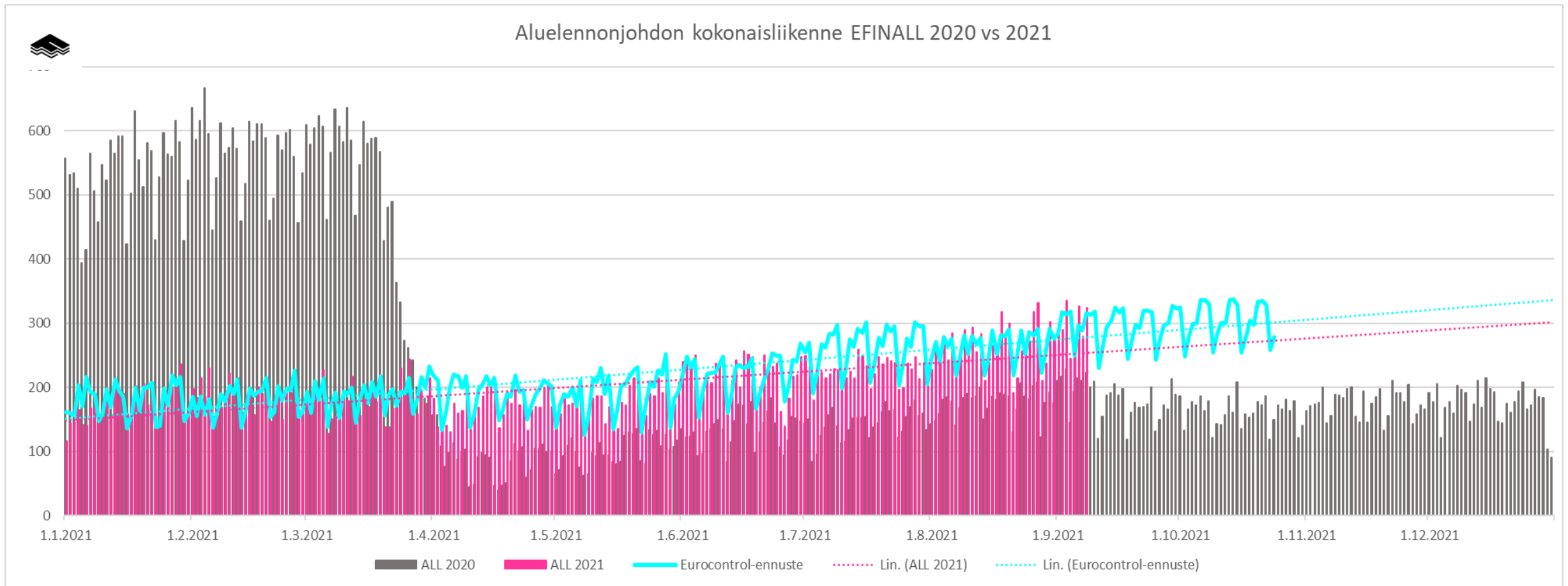


CPWG / 30 Fintraffic ANS update



Helsinki ACC daily traffic 2020 vs. 2021

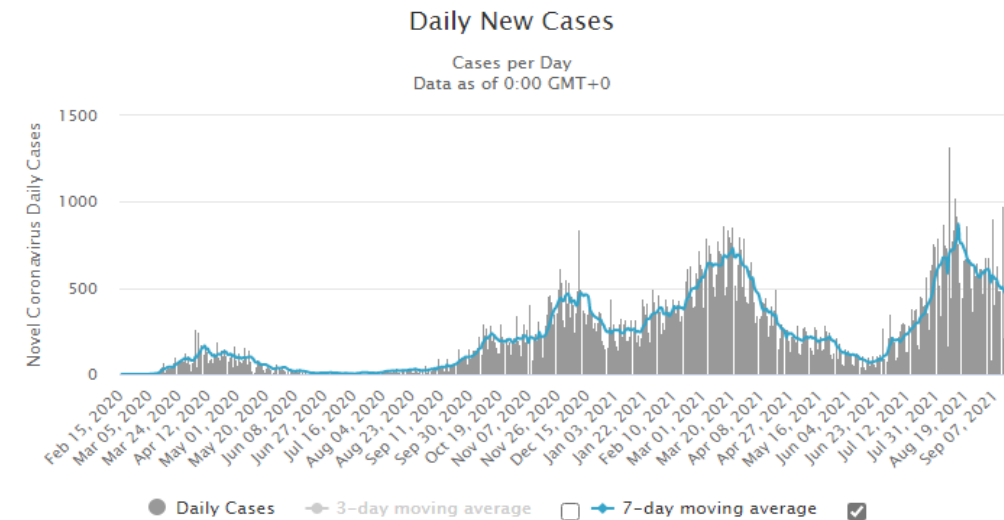


Recovery slower than generally in Europe
Traffic figures below Eurocontrol Scenario 2 -level



Covid -19 status update in Finland

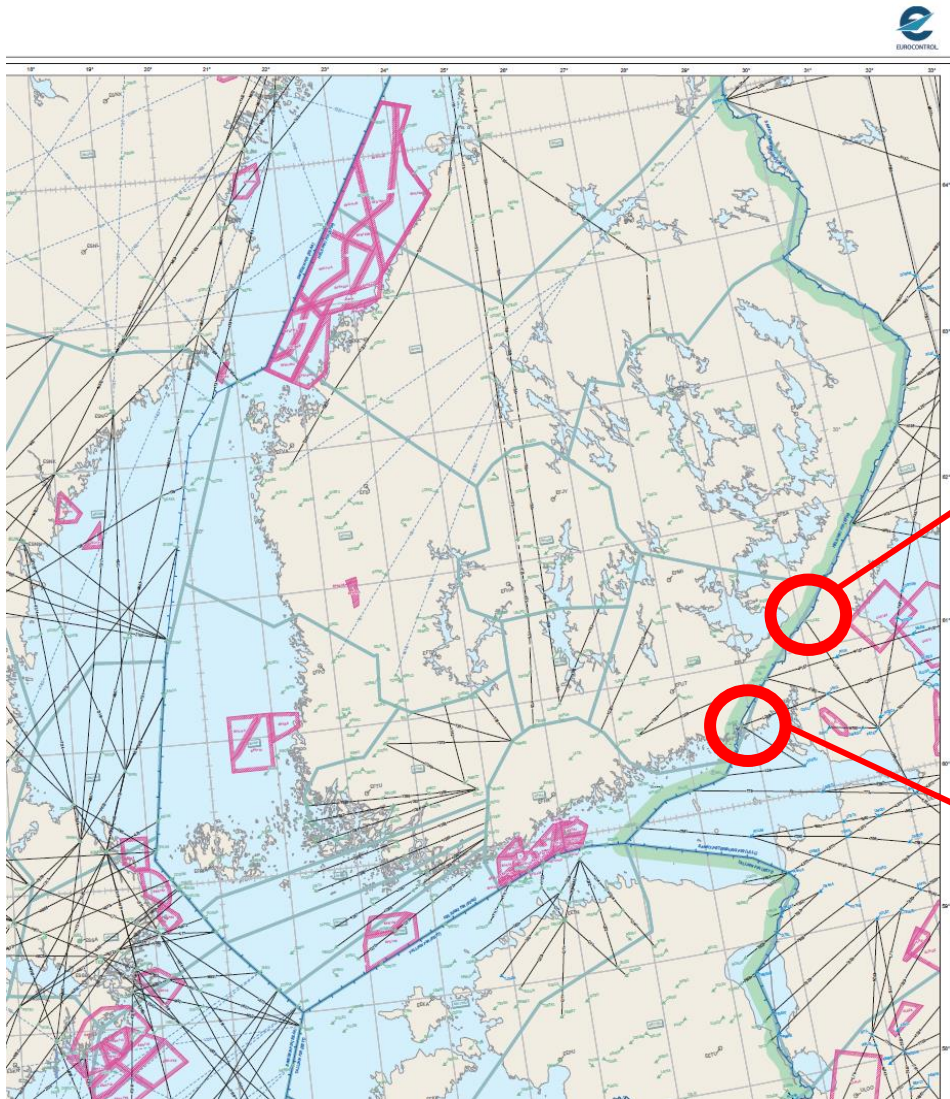
- COVID -19 situation slowly improving
- The vaccine rollout:
 - Two doses 57% of total population
- Restrictions on public events and meetings in effect in majority parts of the country



- Entry restrictions have been slowly lifted
 - Passengers from EU and Schengen countries are not bound by travel restrictions
 - However, in majority participating in health security measures required
 - Vaccination certificate
 - Negative test result
 - Confirmed coronavirus disease diagnosed within 6 months
 - Entry from other than low risk Covid-19 countries are subject to restrictions for persons not vaccinated.
 - Entry is only permitted for necessary and justified reasons, evaluated case by case
- ATCOs that have been subject to temporary layoff are mainly in process of coming back to duty
- Consultation process with airspace users in progress
 - Increase of navigational charges are likely



New waypoints



Two new crossborder waypoints effective 12th AUG 2021

- On a common boundary of EFIN and ULLL FIRs

VULEZ (611235N 0290455E)

- Bi directional (E/X) to NEFAB FRA and further to North Atlantic region
- Increased number of routing options for flights between:
 - Middle East and North America
 - India and US East coast

OMZER (603341N 0275050E)

- Eastbound traffic from Europe to South East Asia



Thank you for your attention!

kimmo.lehtimaki@fintraffic.fi

