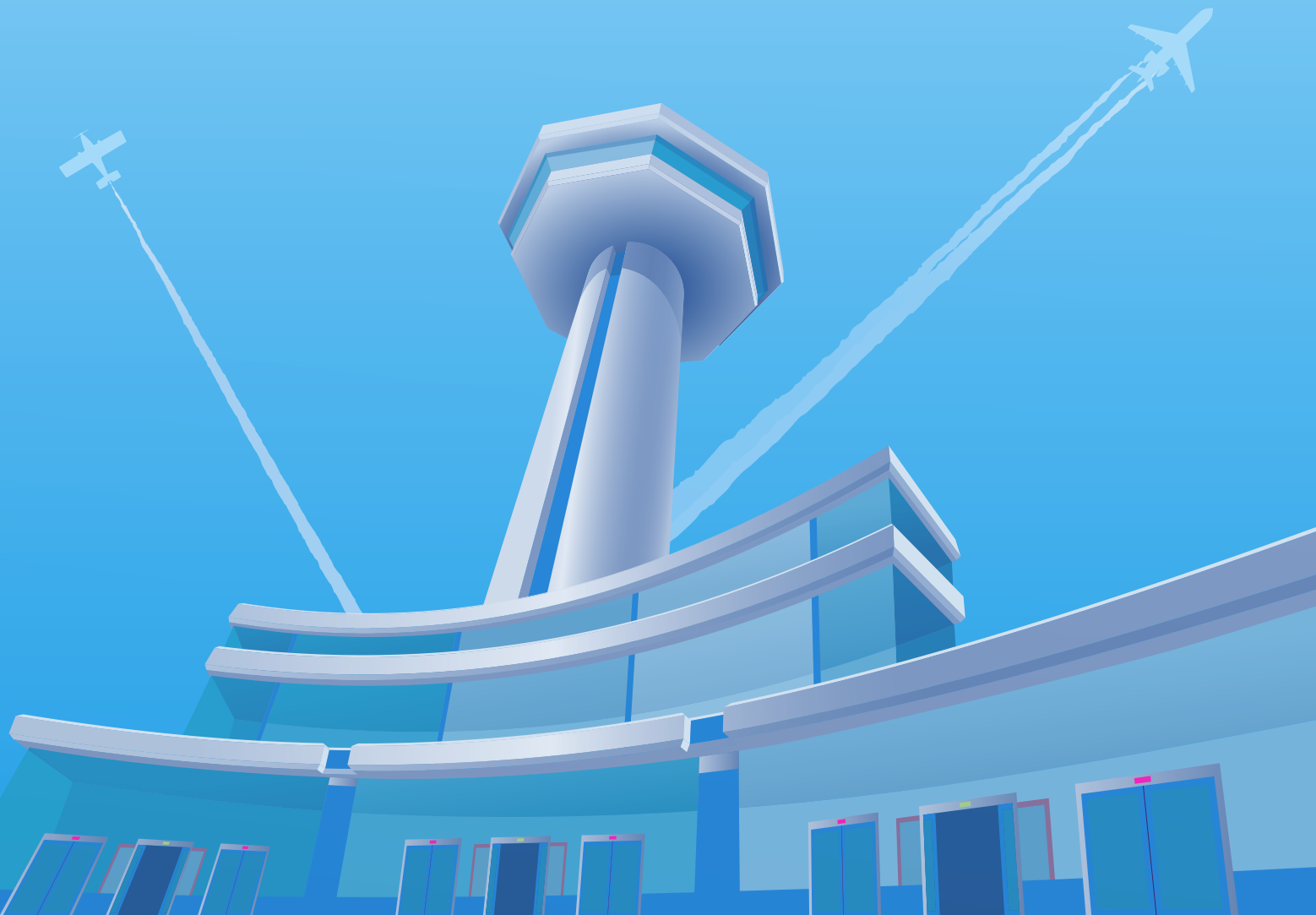




Federal Aviation
Administration

THE
AIR TRAFFIC CONTROLLER
WORKFORCE PLAN

2 0 2 4 - 2 0 3 3



FACILITY STAFFING TARGETS

The Appendix below presents controller staffing standards and CRWG targets, by facility, for En Route and Terminal air traffic control facilities. CPCs + CPC-ITs count towards targets.

While most work in facilities is accomplished by CPCs, work is also being performed independently by CPC-IT and position-qualified developmental controllers who are proficient, or checked out, in specific sectors or positions. While staffing with developmental controllers provides experience on those positions, there is a delay in training and full certification for developmentals when they are relied upon for staffing positions regularly.

A facility's total staffing levels may vary from the staffing targets because new controllers are typically hired two to three years in advance of expected attrition to allow for sufficient training time.

En Route

			Actual on board as of 09/23/23				
ID	FACILITY NAME	2024 STAFFING STANDARDS TARGET	CPC	CPC-IT	DEVELOPMENTAL	TOTAL	2024 CRWG TARGET
ZAB	Albuquerque ARTCC	222	155	3	53	211	234
ZAN	Anchorage ARTCC	92	80	1	29	110	106
ZAU	Chicago ARTCC	278	264	6	77	347	321
ZBW	Boston ARTCC	189	179	7	36	222	207
ZDC	Washington ARTCC	295	257	11	55	323	312
ZDV	Denver ARTCC	283	220	7	20	247	294
ZFW	Fort Worth ARTCC	263	249	7	49	305	295
ZHU	Houston ARTCC	241	245	10	28	283	302
ZID	Indianapolis ARTCC	278	241	11	58	310	298
ZJX	Jacksonville ARTCC	305	209	25	33	267	298
ZKC	Kansas City ARTCC	234	192	7	46	245	241
ZLA	Los Angeles ARTCC	267	192	13	62	267	282
ZLC	Salt Lake City ARTCC	175	122	2	28	152	169
ZMA	Miami ARTCC	269	212	11	56	279	298
ZME	Memphis ARTCC	263	219	2	61	282	288
ZMP	Minneapolis ARTCC	217	215	17	52	284	248
ZNY	New York ARTCC	272	199	9	95	303	321

En Route

			Actual on board as of 09/23/23				
ID	FACILITY NAME	2024 STAFFING STANDARDS TARGET	CPC	CPC-IT	DEVELOPMENTAL	TOTAL	2024 CRWG TARGET
ZOA	Oakland ARTCC	228	141	6	86	233	216
ZOB	Cleveland ARTCC	274	282	6	38	326	345
ZSE	Seattle ARTCC	135	135	4	32	171	166
ZSU	San Juan ARTCC	47	40	3	24	67	65
ZTL	Atlanta ARTCC	314	283	18	70	371	343
ZUA	Guam ARTCC	16	13	0	6	19	18
En Route Total		5,157	4,344	187	1,094	5,625	5,667

Note: Facility numbers do not include new hires at the FAA Academy

Terminal

			Actual on board as of 09/23/23				
ID	FACILITY NAME	2024 STAFFING STANDARDS TARGET	CPC	CPC-IT	DEVELOPMENTAL	TOTAL	2024 CRWG TARGET
A11	Anchorage TRACON	22	20	1	2	23	24
A80	Atlanta TRACON	113	71	18	1	90	110
A90	Boston TRACON	75	61	9	0	70	79
ABE	Allentown Tower	23	26	0	6	32	37
ABI	Abilene Tower	19	15	0	4	19	20
ABQ	Albuquerque Tower	20	21	5	2	28	36
ACK	Nantucket Tower	9	9	0	2	11	14
ACT	Waco Tower	17	17	2	3	22	26
ACY	Atlantic City Tower	22	23	1	6	30	26
ADS	Addison Tower	11	10	2	3	15	16
ADW	Andrews Tower	11	12	0	3	15	22
AFW	Alliance Tower	13	12	2	6	20	15
AGC	Allegheny Tower	11	13	1	1	15	21
AGS	Augusta Tower	18	12	3	6	21	21
ALB	Albany Tower	23	23	0	9	32	30
ALO	Waterloo Tower	11	11	0	2	13	23
AMA	Amarillo Tower	14	19	0	4	23	24
ANC	Anchorage Tower	28	24	2	0	26	28
APA	Centennial Tower	22	17	1	0	18	26
APC	Napa Tower	7	9	1	2	12	12
ARB	Ann Arbor Tower	7	8	0	2	10	12
ARR	Aurora Tower	7	13	1	2	16	12
ASE	Aspen Tower	11	12	0	3	15	21
ATL	Atlanta Tower	54	37	6	0	43	52
AUS	Austin Tower	52	34	8	0	42	60
AVL	Asheville Tower	16	13	1	2	16	20

Terminal

Actual on board as of 09/23/23

ID	FACILITY NAME	2024 STAFFING STANDARDS TARGET	CPC	CPC-IT	DEVELOPMENTAL	TOTAL	2024 CRWG TARGET
AVP	Wilkes-Barre Tower	24	16	0	5	21	26
AZO	Kalamazoo Tower	39	47	1	4	52	60
BDL	Bradley Tower	11	14	0	3	17	21
BED	Hanscom Tower	12	15	0	6	21	19
BFI	Boeing Tower	16	17	0	1	18	20
BFL	Bakersfield Tower	15	17	1	7	25	26
BGM	Binghamton Tower	14	14	0	2	16	21
BGR	Bangor Tower	21	13	1	10	24	31
BHM	Birmingham Tower	22	24	2	3	29	39
BIL	Billings Tower	18	17	0	3	20	24
BIS	Bismarck Tower	13	13	0	1	14	18
BJC	Broomfield Tower	16	13	2	0	15	16
BNA	Nashville Tower	48	31	6	2	39	41
BOI	Boise Tower	28	29	2	0	31	42
BOS	Boston Tower	33	28	4	1	33	33
BPT	Beaumont Tower	9	12	0	0	12	14
BTR	Baton Rouge Tower	15	17	1	3	21	24
BTV	Burlington Tower	16	20	1	1	22	24
BUF	Buffalo Tower	27	30	1	5	36	41
BUR	Burbank Tower	15	17	1	6	24	24
BWI	Baltimore Tower	19	17	3	0	20	22
C90	Chicago TRACON	93	71	24	0	95	102
CAE	Columbia Tower	22	17	2	3	22	28
CAK	Akron-Canton Tower	12	15	0	3	18	15
CCR	Concord Tower	9	9	0	2	11	14
CDW	Caldwell Tower	11	9	1	1	11	12
CHA	Chatanooga Tower	18	17	0	2	19	24
CHS	Charleston Tower	23	19	0	4	23	29
CID	Cedar Rapids Tower	14	15	1	4	20	23
CKB	Clarksburg Tower	16	15	0	4	19	24
CLE	Cleveland Tower	39	48	3	2	53	53
CLT	Charlotte Tower	85	76	10	0	86	90
CMA	Camarillo Tower	10	10	0	1	11	14
CMH	Columbus Tower	37	36	7	2	45	55
CMI	Champaign Tower	14	14	0	3	17	21
CNO	Chino Tower	10	9	2	1	12	15
COS	Colorado Springs Tower	29	18	1	3	22	27
CPR	Casper Tower	17	9	0	4	13	18

Terminal

Actual on board as of 09/23/23

ID	FACILITY NAME	2024 STAFFING STANDARDS TARGET	CPC	CPC-IT	DEVELOPMENTAL	TOTAL	2024 CRWG TARGET
CPS	Downtown Tower	9	10	0	3	13	14
CRP	Corpus Christi Tower	30	31	0	2	33	41
CRQ	Palomar Tower	10	9	0	2	11	14
CRW	Charleston Tower	20	19	0	3	22	31
CSG	Columbus Tower	7	7	0	3	10	12
CVG	Cincinnati Tower	37	37	6	0	43	48
D01	Denver TRACON	79	69	14	0	83	93
D10	Dallas - Ft Worth TRACON	101	70	32	0	102	111
D21	Detroit TRACON	41	43	16	1	60	58
DAB	Daytona Beach Tower	54	46	14	0	60	60
DAL	Dallas Love Tower	20	19	3	0	22	26
DAY	Dayton Tower	11	11	1	1	13	16
DCA	Washington National Tower	28	19	10	1	30	30
DEN	Denver Tower	46	31	3	0	34	41
DFW	DFW Tower	51	47	6	0	53	58
DLH	Duluth Tower	18	14	1	4	19	25
DPA	Dupage Tower	12	13	0	5	18	19
DSM	Des Moines Tower	19	16	0	6	22	28
DTW	Detroit Tower	26	33	2	0	35	33
DVT	Deer Valley Tower	18	15	2	2	19	22
DWH	Hooks Tower	9	13	0	1	14	19
ELM	Elmira Tower	15	10	3	2	15	13
ELP	El Paso Tower	20	22	0	5	27	35
EMT	El Monte Tower	7	8	1	2	11	12
ERI	Erie Tower	9	9	0	0	9	12
EUG	Eugene Tower	18	20	0	1	21	28
EVV	Evansville Tower	13	11	1	10	22	23
EWR	Newark Tower	37	28	5	0	33	37
F11	Central Florida TRACON	61	40	8	0	48	60
FAI	Fairbanks Tower	21	14	0	11	25	28
FAR	Fargo Tower	19	14	0	4	18	26
FAT	Fresno Tower	26	19	0	9	28	30
FAY	Fayetteville Tower	23	16	1	9	26	28
FCM	Flying Cloud Tower	9	10	1	1	12	14
FFZ	Falcon Field Tower	16	10	0	2	12	18
FLL	Fort Lauderdale Tower	23	22	2	0	24	26
FLO	Florence Tower	12	11	0	5	16	16
FNT	Flint Tower	9	9	0	2	11	12

Terminal

Actual on board as of 09/23/23

ID	FACILITY NAME	2024 STAFFING STANDARDS TARGET	CPC	CPC-IT	DEVELOPMENTAL	TOTAL	2024 CRWG TARGET
FPR	St Lucie Tower	9	8	1	1	10	14
FRG	Farmingdale Tower	16	9	2	5	16	13
FSD	Sioux Falls Tower	17	15	1	2	18	22
FSM	Fort Smith Tower	22	28	1	3	32	30
FTW	Meacham Tower	14	12	1	4	17	23
FWA	Fort Wayne Tower	21	18	0	4	22	29
FXE	Fort Lauderdale Executive Tower	16	14	0	4	18	21
GCN	Grand Canyon Tower	7	8	0	1	9	14
GEG	Spokane Tower	31	29	5	4	38	44
GFK	Grand Forks Tower	22	19	0	1	20	30
GGG	Longview Tower	17	16	0	8	24	28
GPT	Gulfport Tower	14	13	0	4	17	22
GRB	Green Bay Tower	19	18	0	0	18	26
GRR	Grand Rapids Tower	11	10	0	0	10	14
GSO	Greensboro Tower	23	22	0	5	27	28
GSP	Greer Tower	18	17	1	4	22	24
GTF	Great Falls Tower	18	12	0	7	19	23
HCF	Honolulu Control Facility	90	64	11	8	83	93
HEF	Manassas Tower	9	11	1	1	13	12
HIO	Hillsboro Tower	10	15	0	2	17	18
HLN	Helena Tower	9	10	0	2	12	16
HOU	Hobby Tower	18	18	2	0	20	22
HPN	Westchester Tower	12	14	0	6	20	22
HSV	Huntsville Tower	14	14	1	7	22	24
HTS	Huntington Tower	19	14	0	4	18	27
HUF	Terre Haute /Hulman Tower	19	13	1	5	19	29
HWD	Hayward Tower	8	7	0	3	10	14
I90	Houston TRACON	84	78	13	0	91	96
IAD	Dulles Tower	25	26	2	0	28	30
IAH	Houston Intercontinental Tower	32	30	3	0	33	39
ICT	Wichita Tower	30	23	6	4	33	40
ILG	Wilmington Tower	9	11	0	1	12	14
ILM	Wilmington Tower	14	17	2	4	23	26
IND	Indianapolis Tower	49	37	6	0	43	45
ISP	Islip Tower	11	14	1	2	17	23
ITO	Hilo Tower	11	12	0	2	14	18
JAN	Jackson Tower	15	14	0	4	18	22
JAX	Jacksonville Tower	45	38	7	3	48	45

Terminal

Actual on board as of 09/23/23

ID	FACILITY NAME	2024 STAFFING STANDARDS TARGET	CPC	CPC-IT	DEVELOPMENTAL	TOTAL	2024 CRWG TARGET
JCF	Joshua Control Facility	25	14	3	7	24	26
JFK	Kennedy Tower	35	28	6	0	34	33
JNU	Juneau Tower	12	12	0	2	14	19
L30	Las Vegas TRACON	44	36	2	0	38	56
LAF	Lafayette Tower	9	8	0	3	11	12
LAN	Lansing Tower	11	12	0	2	14	15
LAS	Las Vegas Tower	43	30	6	0	36	41
LAX	Los Angeles Tower	44	39	9	0	48	56
LBB	Lubbock Tower	18	16	0	2	18	26
LCH	Lake Charles Tower	16	14	0	3	17	21
LEX	Lexington Tower	24	19	2	3	24	30
LFT	Lafayette Tower	16	17	0	4	21	24
LGA	La Guardia Tower	32	29	7	0	36	37
LGB	Long Beach Tower	19	16	4	0	20	26
LIT	Little Rock Tower	22	23	1	4	28	38
LNK	Lincoln Tower	10	9	1	1	11	12
LOU	Bowman Tower	9	9	1	1	11	14
LVK	Livermore Tower	9	9	0	4	13	14
M03	Memphis TRACON	33	25	0	1	26	41
M98	Minneapolis TRACON	44	47	9	4	60	54
MAF	Midland Tower	14	19	0	6	25	26
MBS	Saginaw Tower	9	9	0	1	10	14
MCI	Kansas City Tower	26	36	3	2	41	40
MCO	Orlando Tower	29	19	6	0	25	35
MDT	Harrisburg Tower	28	20	3	10	33	32
MDW	Midway Tower	18	19	3	2	24	22
MEM	Memphis Tower	20	20	7	0	27	35
MFD	Mansfield Tower	9	8	0	4	12	12
MGM	Montgomery Tower	15	17	1	6	24	24
MHT	Manchester Tower	12	13	0	0	13	16
MIA	Miami Tower	98	59	28	0	87	98
MIC	Crystal Tower	9	9	0	2	11	12
MKC	Downtown Tower	12	13	1	2	16	19
MKE	Milwaukee Tower	35	27	7	0	34	49
MKG	Muskegon Tower	9	8	0	3	11	12
MLI	Quad City Tower	14	16	1	5	22	21
MLU	Monroe Tower	13	12	1	4	17	21
MMU	Morristown Tower	9	8	0	3	11	19

Terminal

Actual on board as of 09/23/23

ID	FACILITY NAME	2024 STAFFING STANDARDS TARGET	CPC	CPC-IT	DEVELOPMENTAL	TOTAL	2024 CRWG TARGET
MOB	Mobile Tower	19	19	2	0	21	24
MRI	Merrill Tower	12	9	0	2	11	14
MRY	Monterey Tower	9	8	0	2	10	12
MSN	Madison Tower	18	15	0	8	23	30
MSP	Minneapolis Tower	28	30	4	0	34	37
MSY	New Orleans Tower	40	25	7	2	34	39
MWH	Grant County Tower	16	12	0	6	18	21
MYF	Montgomery Tower	18	14	5	1	20	21
MYR	Myrtle Beach Tower	34	17	4	0	21	27
N90	New York TRACON	199	130	16	59	205	226
NCT	Northern California TRACON	169	123	17	0	140	174
NEW	Lakefront Tower	7	11	0	4	15	14
OAK	Oakland Tower	17	19	2	0	21	35
OGG	Maui Tower	11	10	1	4	15	19
OKC	Oklahoma City Tower	30	24	4	5	33	36
OMA	Eppley Tower	11	12	1	3	16	16
ONT	Ontario Tower	11	14	0	2	16	21
ORD	Chicago O'Hare Tower	53	57	16	0	73	73
ORF	Norfolk Tower	30	20	5	2	27	35
ORL	Orlando Executive Tower	9	12	0	1	13	12
P31	Pensacola TRACON	30	32	4	0	36	35
P50	Phoenix TRACON	61	53	6	1	60	58
P80	Portland TRACON	26	21	3	4	28	26
PAE	Paine Tower	10	10	0	1	11	14
PAO	Palo Alto Tower	8	8	0	3	11	14
PBI	Palm Beach Tower	56	46	3	3	52	58
PCT	Potomac TRACON	148	140	23	0	163	173
PDK	DeKalb - Peachtree Tower	13	16	3	1	20	22
PDX	Portland Tower	18	22	4	1	27	26
PHF	Patrick Henry Tower	9	9	0	3	12	14
PHL	Philadelphia Tower	75	63	32	2	97	114
PHX	Phoenix Tower	35	25	3	0	28	35
PIA	Peoria Tower	12	16	0	1	17	15
PIE	St Petersburg Tower	9	11	0	3	14	14
PIT	Pittsburgh Tower	36	31	4	2	37	45
PNE	Northeast Philadelphia Tower	9	8	3	2	13	14
PNS	Pensacola Tower	9	8	2	2	12	14
POC	Brackett Tower	7	9	0	3	12	14

Terminal

Actual on board as of 09/23/23

ID	FACILITY NAME	2024 STAFFING STANDARDS TARGET	CPC	CPC-IT	DEVELOPMENTAL	TOTAL	2024 CRWG TARGET
POU	Poughkeepsie Tower	9	7	0	2	9	12
PRC	Prescott Tower	15	11	3	0	14	18
PSC	Pasco Tower	9	10	0	0	10	17
PSP	Palm Springs Tower	9	9	0	2	11	12
PTK	Pontiac Tower	11	9	1	3	13	15
PUB	Pueblo Tower	13	10	1	3	14	18
PVD	Providence Tower	29	28	3	5	36	37
PWK	Chicago Executive Tower	9	11	1	2	14	14
PWM	Portland Tower	17	18	4	0	22	26
R90	Omaha TRACON	22	18	0	4	22	24
RDG	Reading Tower	18	15	3	1	19	18
RDU	Raleigh-Durham Tower	46	34	9	1	44	43
RFD	Rockford Tower	22	19	0	2	21	32
RHV	Reid-Hillview Tower	9	10	0	2	12	14
RIC	Richmond Tower	11	14	1	1	16	16
RNO	Reno Tower	11	14	0	4	18	21
ROA	Roanoke Tower	18	21	1	2	24	28
ROC	Rochester Tower	22	22	1	3	26	37
ROW	Roswell Tower	12	11	0	7	18	18
RST	Rochester Tower	14	11	0	0	11	23
RSW	Fort Myers Tower	29	28	3	1	32	37
RVS	Riverside Tower	11	16	1	3	20	18
S46	Seattle TRACON	55	34	3	1	38	52
S56	Salt Lake City TRACON	40	35	4	2	41	45
SAN	San Diego Tower	19	23	0	0	23	28
SAT	San Antonio Tower	39	39	6	1	46	56
SAV	Savannah Tower	29	21	2	2	25	32
SBA	Santa Barbara Tower	19	23	0	6	29	30
SBN	South Bend Tower	22	17	1	9	27	30
SCK	Stockton Tower	7	12	0	1	13	12
SCT	Southern California TRACON	203	171	39	0	210	232
SDF	Standiford Tower	46	34	10	2	46	52
SDL	Scottsdale Tower	12	9	0	1	10	16
SEA	Seattle Tower	33	25	3	0	28	33
SEE	Gillespie Tower	10	13	1	3	17	19
SFB	Sanford Tower	16	13	1	0	14	18
SFO	San Francisco Tower	31	22	6	0	28	30
SGF	Springfield Tower	23	24	0	3	27	30

Terminal

Actual on board as of 09/23/23

ID	FACILITY NAME	2024 STAFFING STANDARDS TARGET	CPC	CPC-IT	DEVELOPMENTAL	TOTAL	2024 CRWG TARGET
SHV	Shreveport Tower	21	22	0	3	25	28
SJC	San Jose Tower	13	11	2	4	17	15
SJU	San Juan Tower	13	15	0	2	17	22
SLC	Salt Lake City Tower	29	27	0	0	27	33
SMF	Sacramento Tower	11	14	1	3	18	16
SMO	Santa Monica Tower	7	14	3	3	20	16
SNA	John Wayne Tower	20	16	2	2	20	26
SPI	Springfield Tower	8	10	0	1	11	12
SRQ	Sarasota Tower	12	13	0	2	15	16
STL	St Louis Tower	14	21	3	2	26	22
STP	St Paul Tower	9	10	0	2	12	14
STS	Sonoma Tower	7	6	0	5	11	14
STT	St Thomas Tower	9	10	1	1	12	14
SUS	Spirit Tower	9	9	1	1	11	14
SUX	Sioux Gateway Tower	12	13	0	2	15	21
SYR	Syracuse Tower	19	17	0	9	26	28
T75	St Louis TRACON	37	26	14	1	41	39
TEB	Teterboro Tower	27	14	5	1	20	22
TLH	Tallahassee Tower	17	15	0	2	17	24
TMB	Tamiami Tower	14	16	0	1	17	22
TOA	Torrance Tower	10	10	0	6	16	14
TOL	Toledo Tower	22	20	1	2	23	25
TPA	Tampa Tower	57	45	13	3	61	67
TRI	Tri-Cities Tower	17	17	0	5	22	24
TUL	Tulsa Tower	25	25	2	2	29	34
TUS	Tucson Tower	13	15	0	3	18	22
TVC	Traverse City Tower	9	8	0	1	9	14
TWF	Twin Falls Tower	9	8	0	3	11	14
TYS	Knoxville Tower	25	24	4	2	30	37
U90	Tucson TRACON	19	13	3	5	21	24
VGT	North Las Vegas Tower	10	10	0	2	12	20
VNY	Van Nuys Tower	21	22	1	0	23	26
VRB	Vero Beach Tower	13	10	0	0	10	13
Y90	Yankee TRACON	21	15	7	3	25	26
YIP	Willow Run Tower	12	14	0	2	16	23
YNG	Youngstown Tower	20	17	0	2	19	25
Terminal Total		7,085	6,249	798	776	7,823	8,966

Note: Facility numbers do not include new hires at the FAA Academy

FAA Totals

Actual on board as of 09/23/23

	2024 STAFFING STANDARDS TARGET	CPC	CPC-IT	DEVELOPMENTAL	TOTAL	2024 CRWG TARGET
En Route Total	5,157	4,344	187	1,094	5,625	5,667
Terminal Total	7,085	6,249	798	776	7,823	8,966
Facility Total	12,242	10,593	985	1,870	13,448	14,633
FAA Academy Students					405	
Total Headcount					13,853	