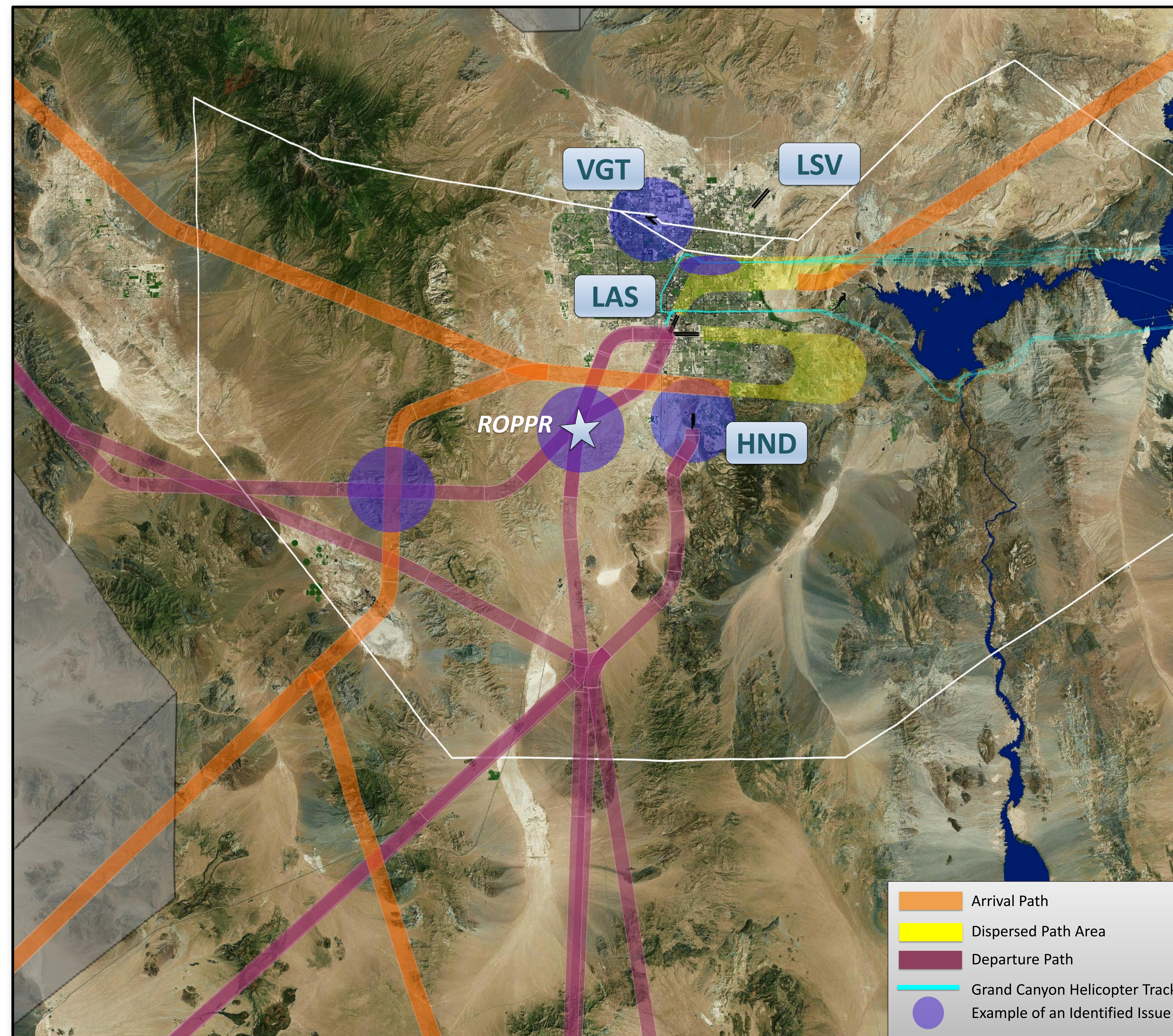
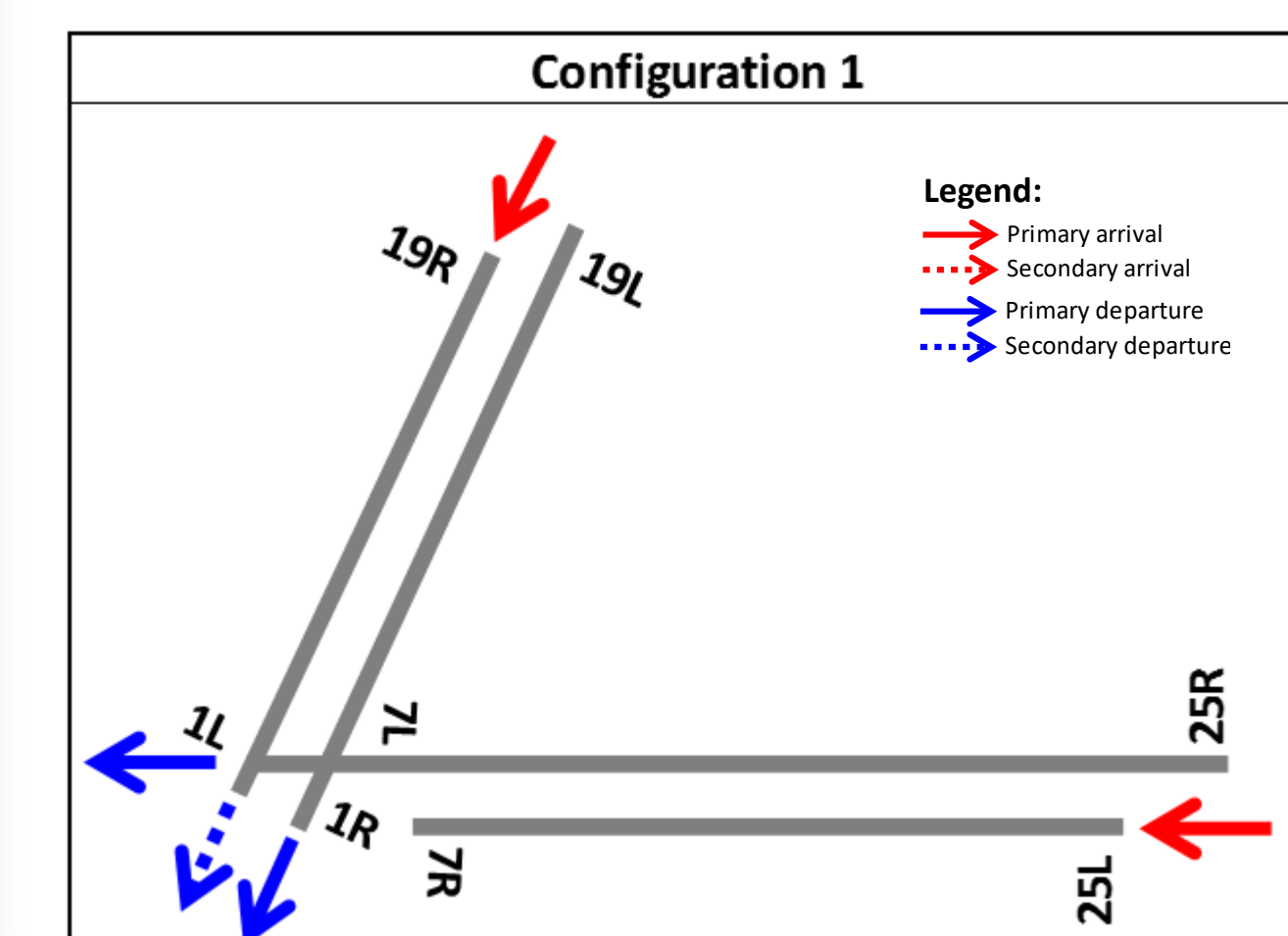




LAS McCarran International
LSV Nellis Air Force Base
VGT North Las Vegas
HND Henderson Executive

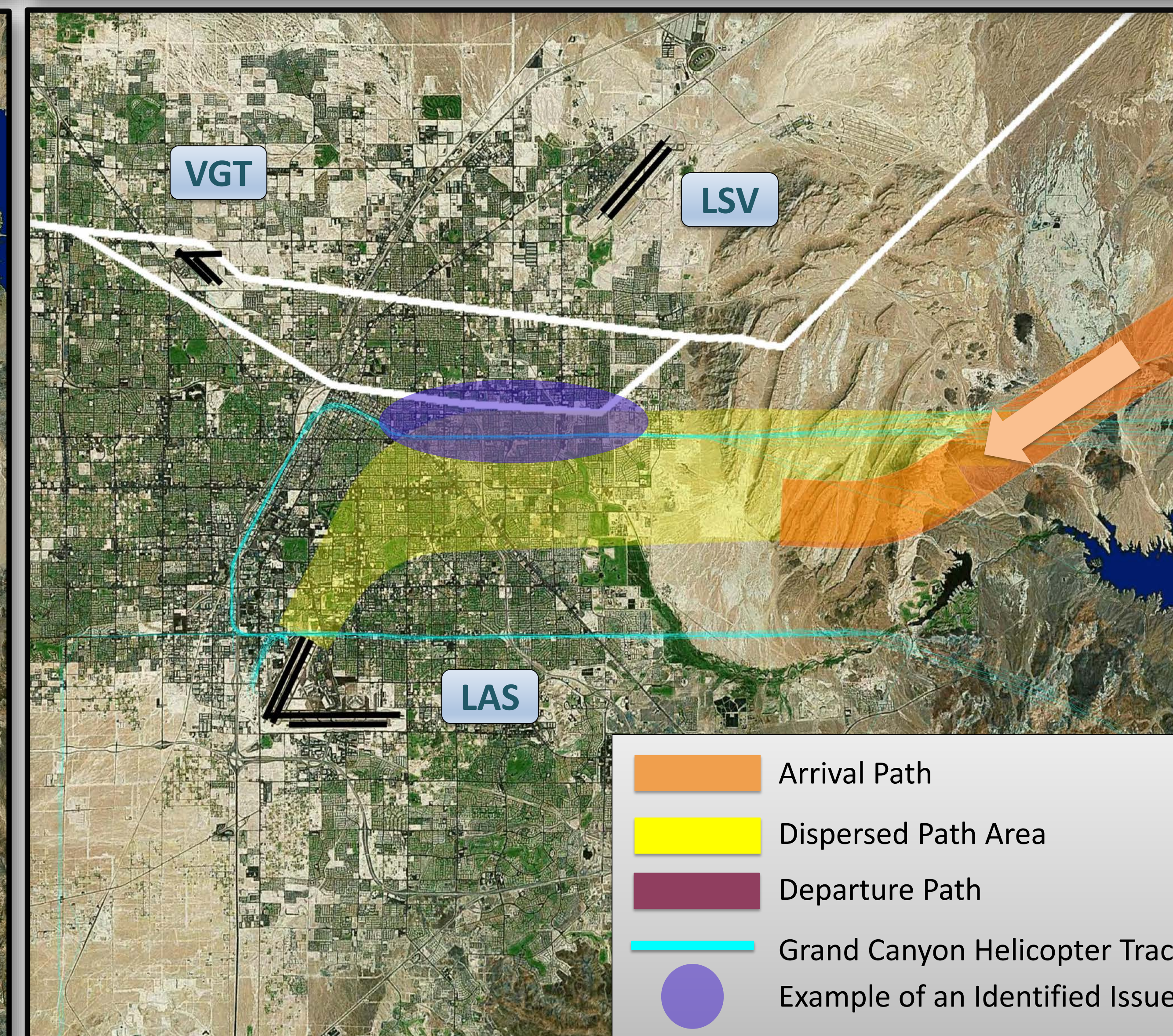
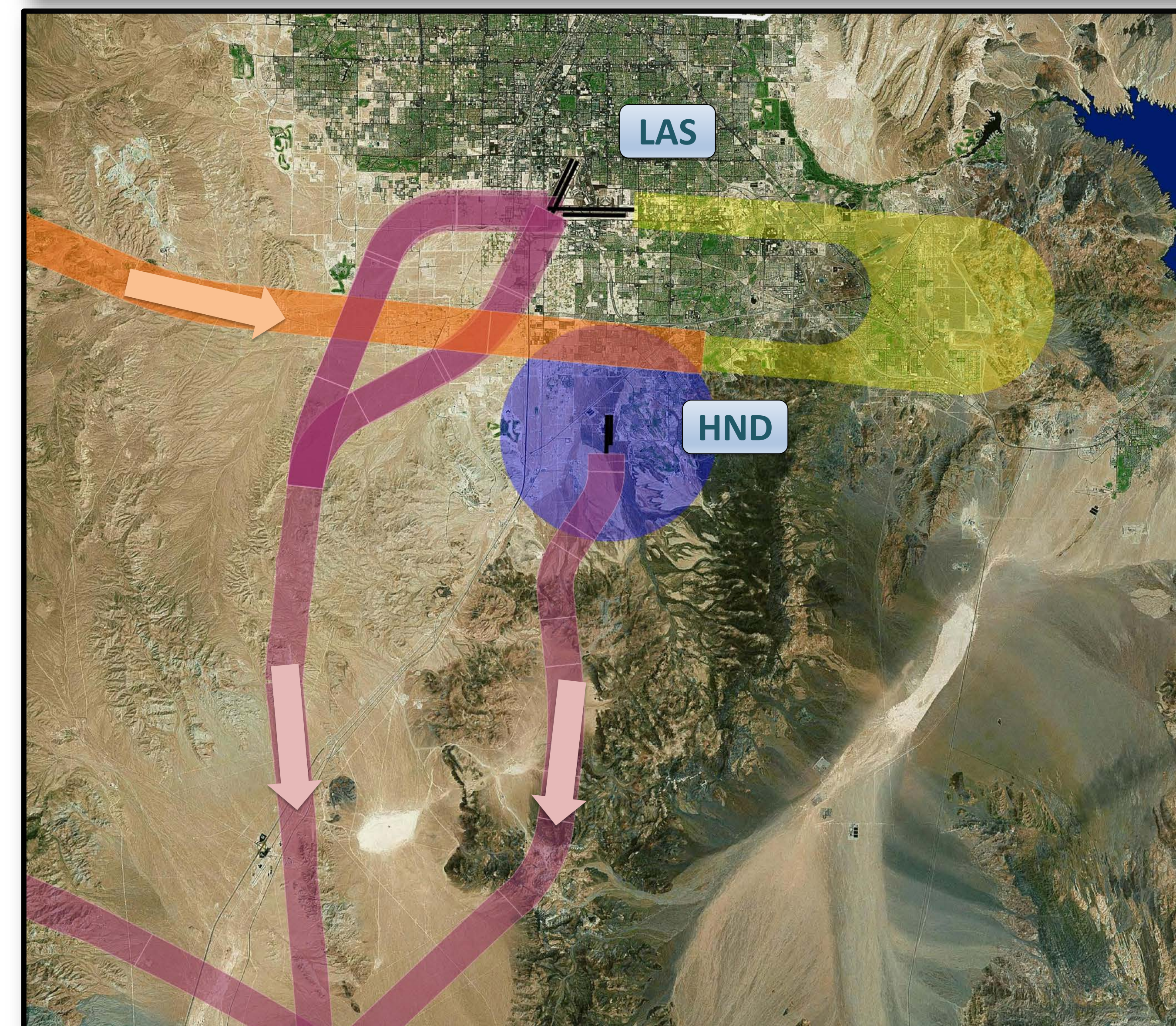
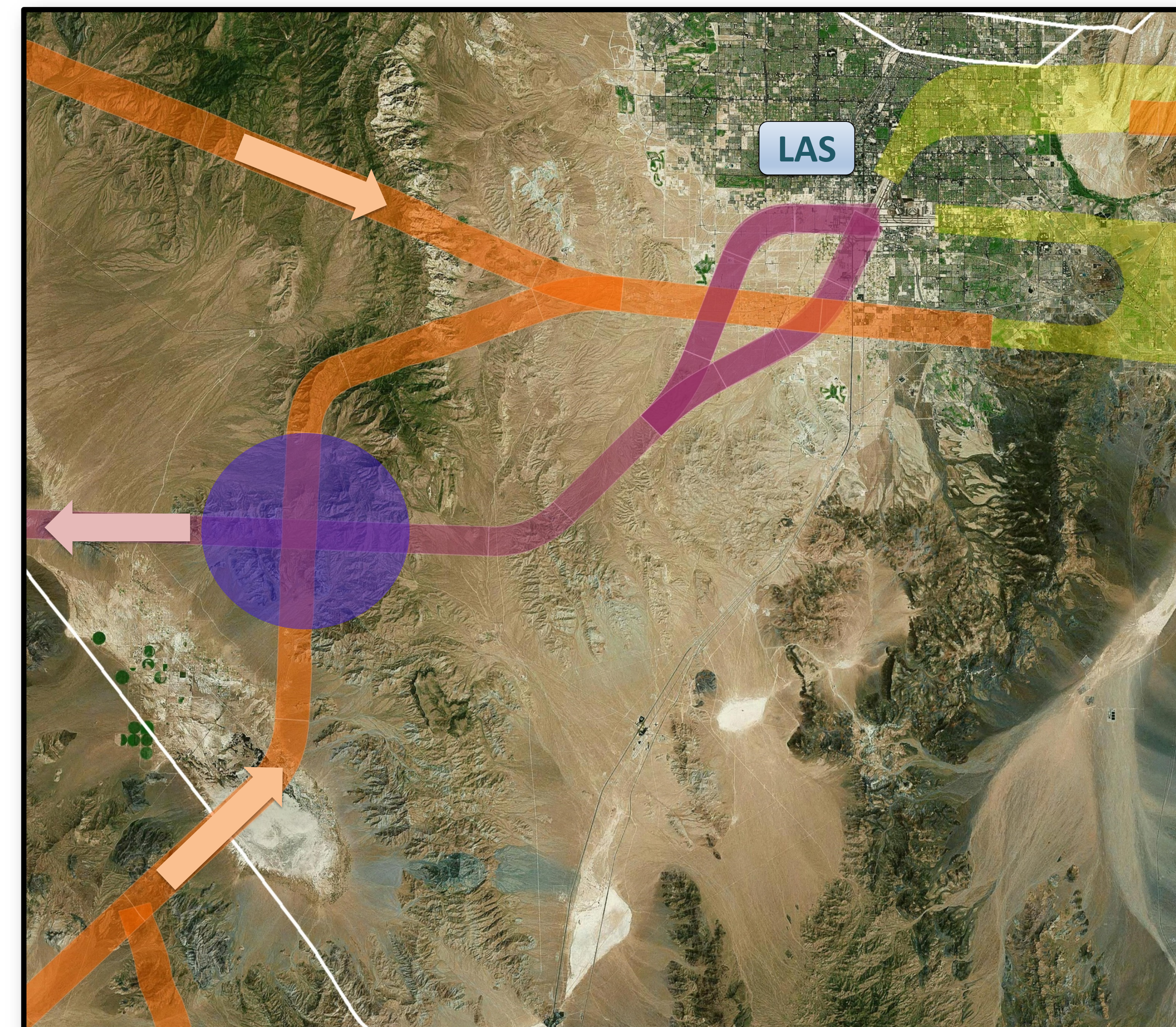


- Most common configuration at McCarran International Airport

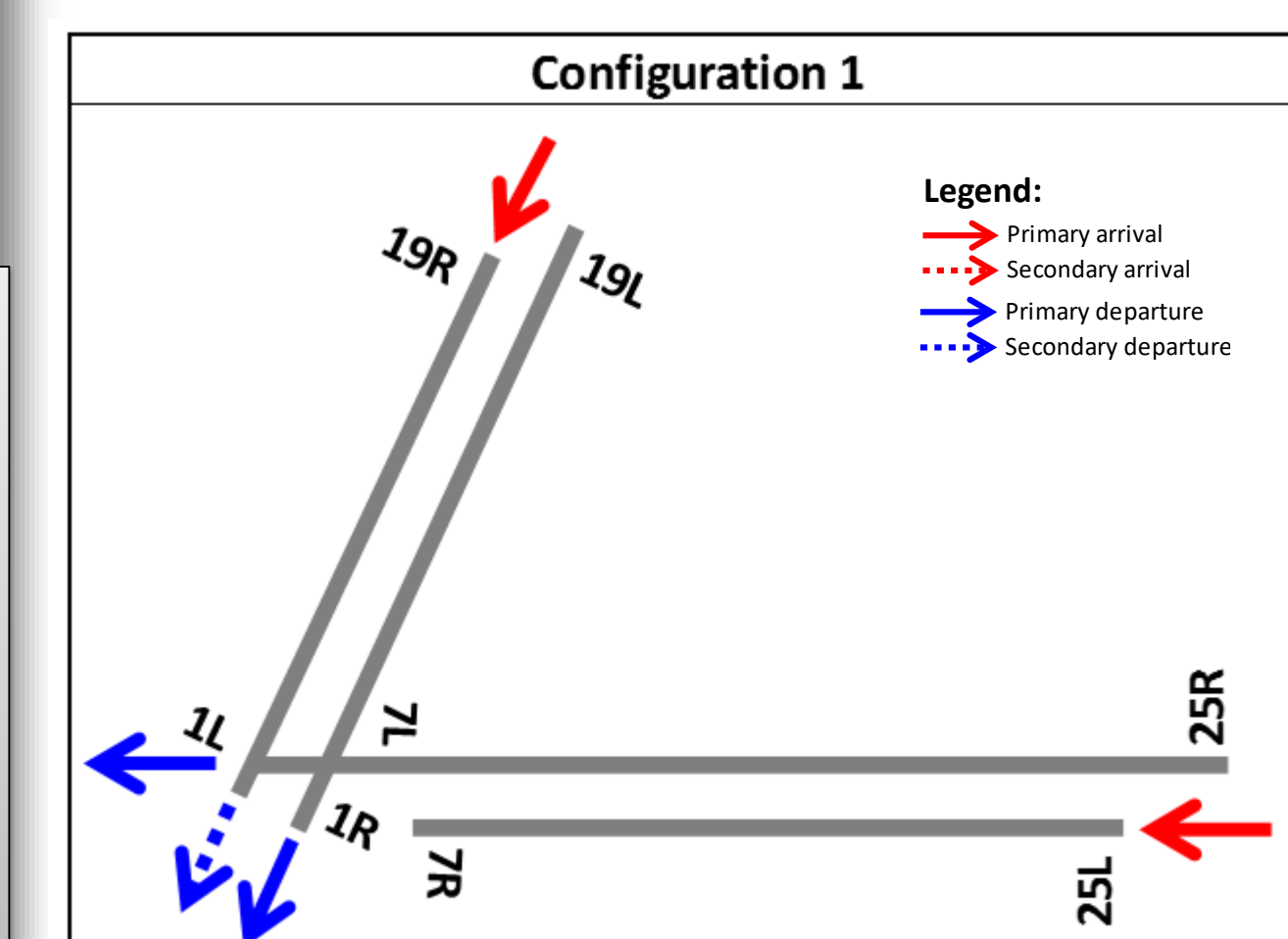


LAS McCarran International
LSV Nellis Air Force Base
VGT North Las Vegas
HND Henderson Executive

- Top left – McCarran departure level offs due to southwest arrivals
- Top right – Runway 19 and Runway 25 departures at McCarran International Airport utilize same coordination point
- Bottom left – Currently no departure procedures in place for Runway 35 at Henderson Executive Airport
- Bottom right – Lack of course guidance for Runway 19 arrivals to McCarran International Airport creates unnecessary interaction with VFR tour helicopters and adjacent military airspace

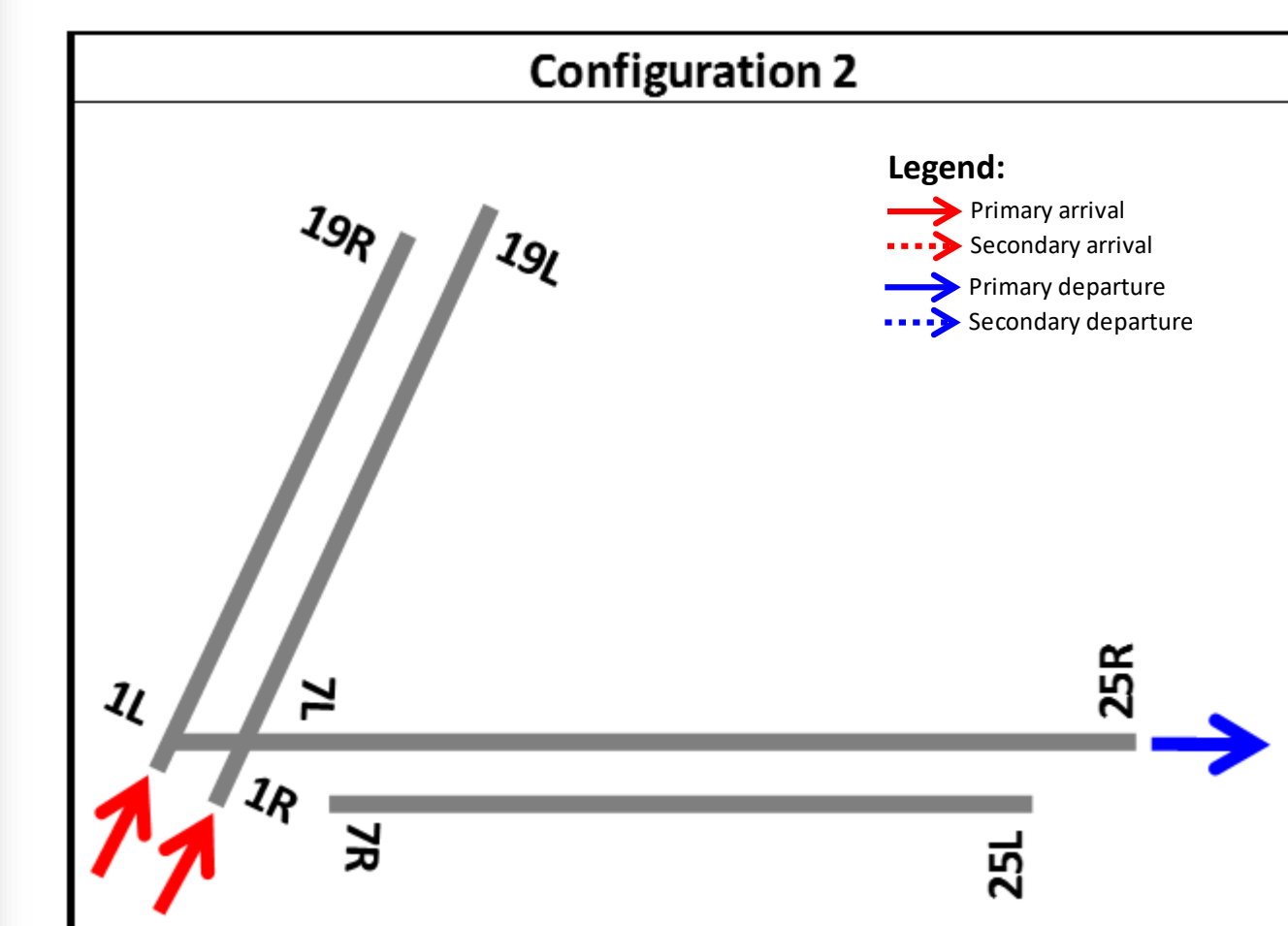
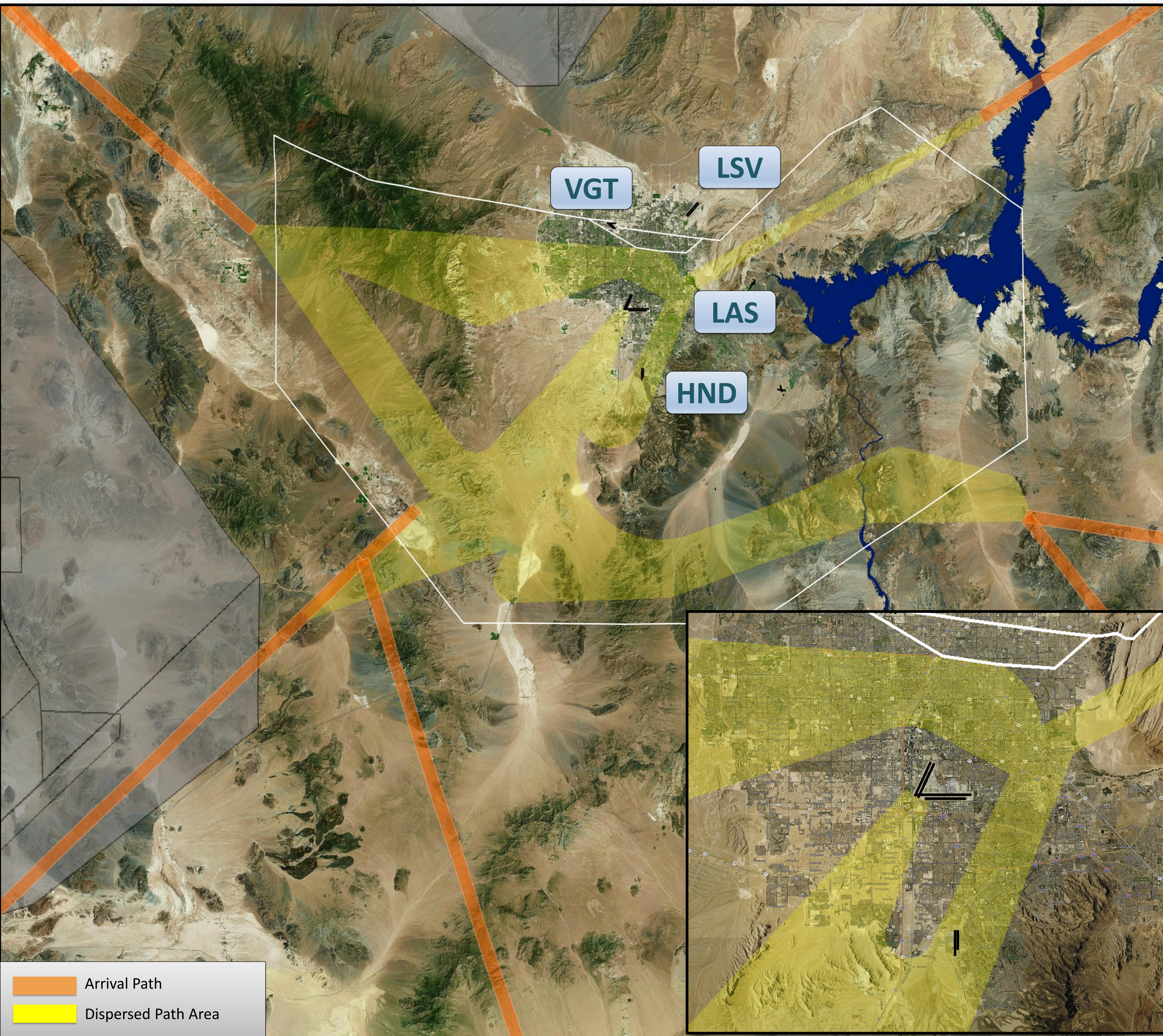


Arrival Path
 Dispersed Path Area
 Departure Path
 Grand Canyon Helicopter Tracks
 Example of an Identified Issue



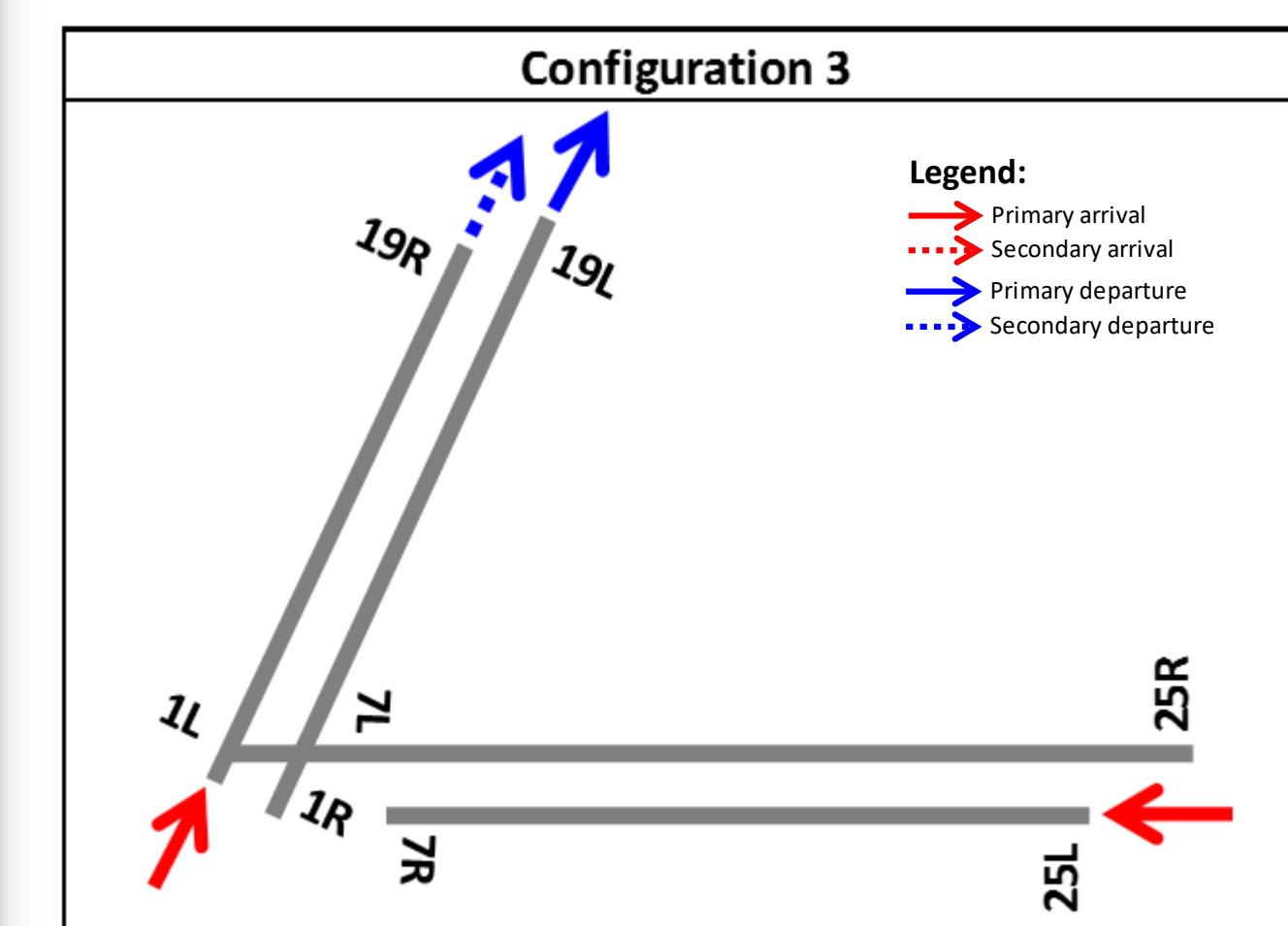
LAS McCarran International
LSV Nellis Air Force Base
VGT North Las Vegas
HND Henderson Executive

- Arrival procedures lack course guidance for Runway 01 arrivals which creates an increased workload and a lack of repeatable and predictable flight paths



LAS McCarran International
LSV Nellis Air Force Base
VGT North Las Vegas
HND Henderson Executive

- Simultaneous use of northbound runways at VGT and LAS creates delays and increases complexity at both airports



Departure Path
 Example of an Identified Issue

LAS McCarran International
LSV Nellis Air Force Base
VGT North Las Vegas
HND Henderson Executive

- Lack of course guidance to arrival runways
- Primarily used in hotter temperatures which causes LAS departures to interact with Runway 19 arrival traffic

