

# Maintenance Programs

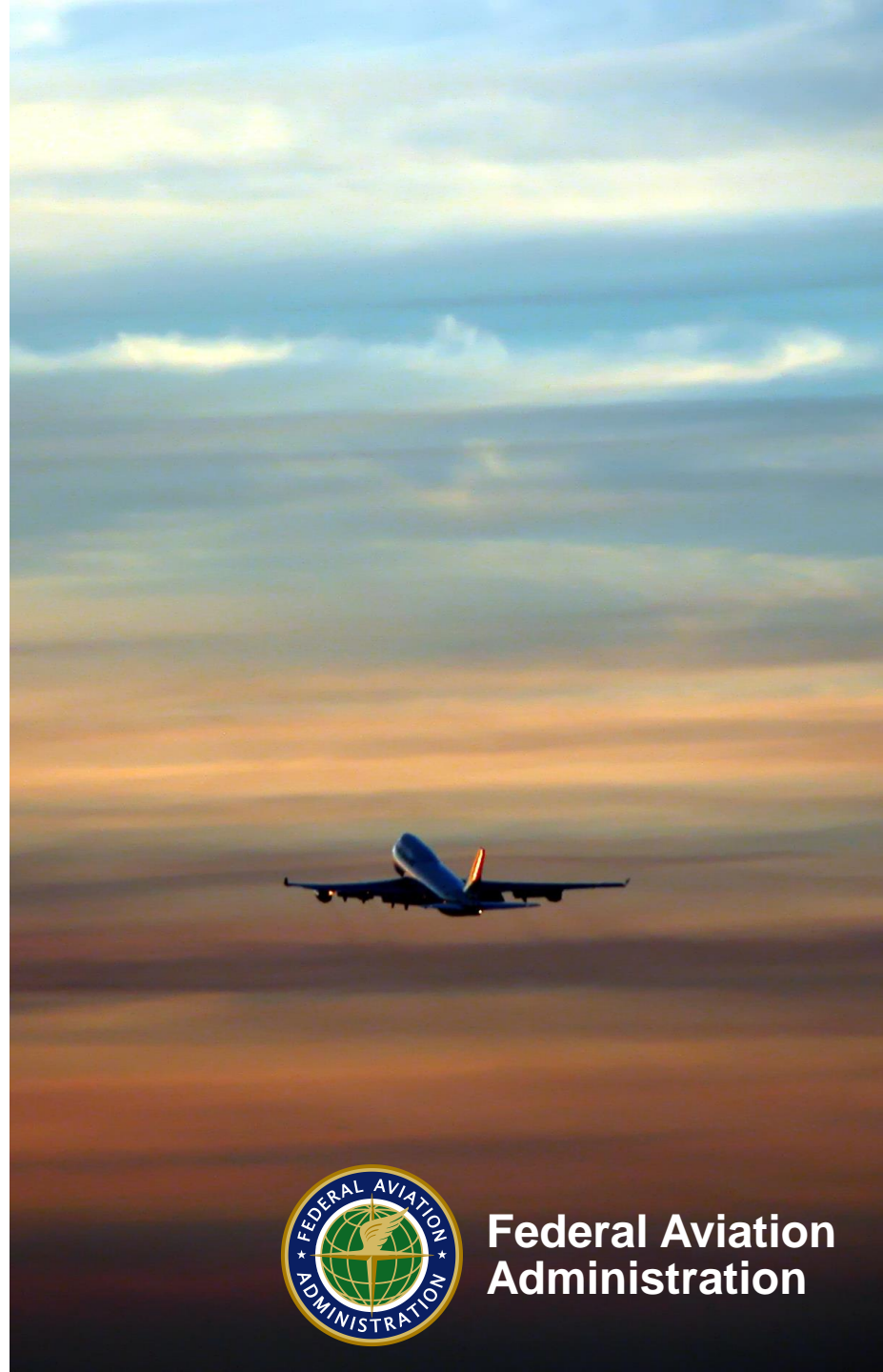
Presented to: Altimetry System Error (ASE)  
Workshop

By: Marcus Labay  
ASI, AFS-360

Date: September 2016



**Federal Aviation  
Administration**



# Maintenance Programs

- Initial RVSM maintenance program developed by using Type Certificate Holder (TCH) Instructions for Continued Airworthiness (ICA)
- Program adjustments using TCH Service Bulletins (SB) Service Letters (SL) or ICA revisions
- Operator initiated program adjustments



# Continued Analysis and Surveillance System :CASS

## 14 CFR Parts

- 91.1431
- 121.373
- 135.431



# What is CASS?

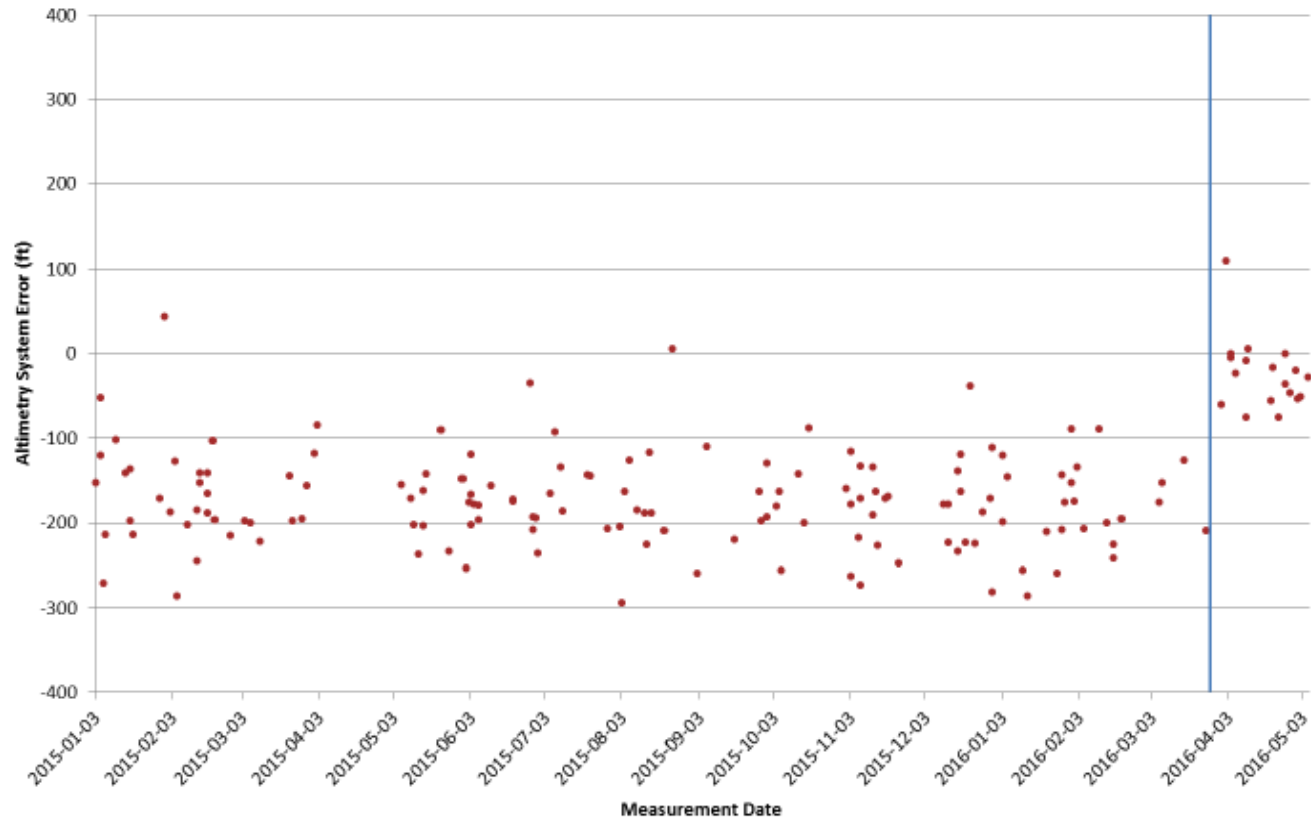
The air carrier's CASS is a risk-based, closed-loop system that has four basic processes:

- Surveillance
- Analysis
- Corrective Action.
- Follow-up.



# Success Story

January 3, 2015 to May 5, 2016



**Marcus Labay**  
**[marcus.a.labay@faa.gov](mailto:marcus.a.labay@faa.gov)**  
**(281) 979-7006**

