



U.S. Department  
of Transportation  
**Federal Aviation  
Administration**

# **ASSET 2:**

## ***In-Depth Review of the 497 Unclassified Airports***



***March 2014***



## **Acknowledgements**

The Federal Aviation Administration (FAA) would like to thank the following organizations for their participation in this national initiative:

- Aircraft Owners and Pilots Association (AOPA)
- Alabama Department of Transportation
- American Association of Airport Executives (AAAE)
- General Aviation Airport Coalition (GAAC)
- Massachusetts Department of Transportation
- National Association of State Aviation Officials (NASAO)
- Oklahoma Aeronautics Commission
- Wisconsin Department of Transportation

The FAA recognizes NASAO for its continuing partnership and support in this initiative, including its help facilitating discussions with state aeronautical agencies nationwide.

## **Cover Photograph Credits (from left to right):**

Cover Airport Photo: Photo courtesy of FAA

1. Aircraft on Apron – Photo courtesy of FAA
2. Downtown Manhattan Heliport – Photo courtesy of Google.com
3. Alaska Seaplane Base – Photo courtesy of FAA

# TABLE OF CONTENTS

EXECUTIVE SUMMARY ..... III

THE REVIEW PROCESS ..... 1

    Coordination with Stakeholders.....2

DISPOSITION OF THE 497 AIRPORTS..... 3

    Closed Facilities.....3

    Airports Moving into an ASSET Category.....3

    Remaining Facilities .....4

SUMMARY ..... 5

**APPENDIX 1: ASSET 1 CATEGORIES AND CRITERIA .....6**

**APPENDIX 2: BREAKOUT OF UNCLASSIFIED, BY STATE.....7**

**APPENDIX 3: AIRPORT DISPOSITION BY STATE .....9**

*This page intentionally left blank*

## Executive Summary

In 2010, the Federal Aviation Administration (FAA) began examining the roles general aviation plays in our national airport system. At the time, general aviation airports had not been thoroughly studied at the national level for more than 40 years. The FAA released the results in a report, *General Aviation Airports: A National Asset* (known as the ASSET report), in May 2012. With the participation of aviation stakeholders, the original ASSET report identified the types of aeronautical functions serving the public interest that general aviation airports perform. The report defined four new categories for nonprimary airports based on existing activity and role (national, regional, local, and basic), which has been incorporated into the FAA's planning process including the National Plan of Integrated Airport Systems (NPIAS). These airports can serve many functions such as access to medical flights, search and rescue, disaster relief, aerial firefighting, law enforcement, and community access.

The original report identified 497 unclassified facilities that did not fit into one of the newly established categories and for which a separate category could not be defined. The FAA committed, as part of the original ASSET report, to an in-depth review of the unclassified airports to ensure that all available information was collected and considered. Most of these facilities have been in the NPIAS for decades. They have seen a decline in aviation activity due to population, economic shifts, and/or fundamental and lasting changes to the general aviation industry and their airport role.

This report documents the findings from our in-depth review of the 497 facilities that could not be categorized in the FAA's original report. This follow-on initiative, known as *ASSET 2*, began in January 2013. The FAA felt that an open and transparent process was critical so that all available information was considered. As a result, FAA established a core team consisting of diverse aviation stakeholders to assist in gathering data and reviewing the unclassified airports.

To begin this effort, the core team developed an outreach strategy to gather the critical input needed for this effort. This review included extensive airport participation and the active engagement of state aviation agencies across the country. It reflects information gained from direct conversations with the unclassified facilities, close cooperation with state aviation officials and aviation stakeholders, a thorough review of all collected data by FAA staff and an industry team, and input gathered during coordination with a broad group of industry stakeholders.

After a thorough review of all the information gathered through outreach and coordination with industry stakeholders, FAA determined that 212 (42 percent) of the original 497 unclassified airports met the criteria for inclusion as either regional, local, or basic. Two hundred and eighty-one airports continue to be unclassified with no clearly defined Federal role. This includes 227 publicly owned airports with little to no activity, 19 privately owned relievers that do not meet the minimum activity levels for continued designation as reliever, and 35 airports that do not meet the statutory requirements for inclusion in the NPIAS because they are privately owned general aviation airports. These airports will remain in the NPIAS as unclassified. They will have the opportunity to move into one of the four established categories upon reaching the thresholds established in the ASSET criteria (see Appendix 1 for the criteria). The final four facilities are closed or inactive, and we will remove them from the NPIAS.

*This page intentionally left blank*

# General Aviation Airports: Asset 2

---

## The Review Process

As a follow-on to the original ASSET report, FAA committed to a thorough review of the 497 facilities that were not classified in the original report. The FAA established an industry team consisting of FAA, state aviation officials, and general aviation stakeholders to develop a collaborative outreach strategy to gather the critical data needed for this review. The following organizations provided representatives to the industry team:

- Aircraft Owners and Pilots Association (AOPA)
- Alabama Department of Transportation
- American Association of Airport Executives (AAAE)
- General Aviation Airport Coalition (GAAC)
- National Association of State Aviation Officials (NASAO)
- Oklahoma Aeronautics Commission
- Wisconsin Department of Transportation

The FAA held regular team meetings to discuss the most efficient approach to gather the necessary data about the unclassified airports. In the spring of 2013, FAA and the industry team agreed upon a collaborative effort. The FAA's local district offices, along with the appropriate state aviation officials, talked directly to each of the 497 airports to learn more about them. All but 16 airports actively and enthusiastically engaged in this process.

The discussions focused on obtaining information from the airports' perspective on the role of the airport based on the following three areas:

- Current aviation activity and future development
- Activities supported by the airport such as:
  - Emergency Preparedness and Response
  - Community Access
  - Economic Activities on Airport
  - Economic Activities off Airport
- Any other pertinent information not previously gathered

The industry team agreed to focus on these key areas because they were similar to the factors used for the original ASSET study and therefore would need to be considered for the 497 unclassified airports. The FAA recognized that, in at least some cases, the original study had faced challenges in securing valid and accurate data for the smallest airports. Although the original ASSET study gathered much of the same data, FAA and the industry team believed additional information could be captured, particularly with direct communication with each airport.

Through the ensuing discussions, the industry team sought additional information on current activity and future development to gain a better understanding of each airport's current functions

and operations as well as insight into future use of the airport facilities. The supporting activity data helped identify facilities that served as the only means of transportation to and from specialized medical facilities (such as trauma centers) or as economic centers for their communities. Lastly, these discussions let the airports provide additional information they considered important, allowing them to make their own case for their role in the national aviation system.

The FAA and industry team spent considerable time reviewing and discussing the information provided by the unclassified airports. The following are some key points gained from this collaborative outreach process:

- Most of the state agencies were very engaged and knowledgeable about the airports in their state.
- Most airports embraced the opportunity to speak to FAA and the state officials about their facilities and expressed pride in their facilities and their value to the communities.
- About a third of the airports said the activity data shown on the FAA master record (FAA Form 5010-1) was correct. Of the two-thirds that said the data was not accurate, 88 subsequently updated their information and have now been categorized.
- Generally, most of the studied airports support the same types of activities that airports in the basic category do, but at considerably lower activity levels.
- About 3 percent of the airports did not respond to repeated outreach via telephone, mail, or electronic mail. The nonresponsive facilities included six publicly owned, six privately owned general aviation airports, and four privately owned reliever airports.

#### *Coordination with Stakeholders*

To continue to support FAA's objective of a collaborative and inclusive process, an industry workshop was held in June 2013 to gather additional feedback from a broad range of airport and aviation industry stakeholders. During the workshop, FAA presented preliminary findings and sought stakeholder feedback about the preliminary findings.

The following organizations joined FAA and the industry team participants at the workshop:

- Airlines for America (A4A)
- Alliance for Aviation Across America (AAAA)
- General Aviation Manufacturers Association (GAMA)
- Massachusetts Department of Transportation
- Mississippi Department of Transportation
- National Business Aviation Association (NBAA)
- Navajo Division of Transportation
- New York Airport Management Association (NYAMA)
- Washington Council of Governments

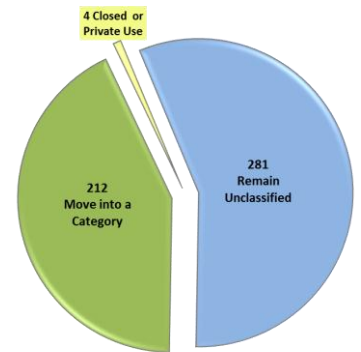
At the conclusion of the workshop, it was apparent to all participants that based on available information a group of facilities would remain as unclassified airports.



## Disposition of the 497 Airports

As a result of the ASSET 2 review of the 497 unclassified airports, the disposition is as follows:

- 4 airports are closed or became private use and will be removed;
- 212 airports were moved into one of the airport categories; and
- 281 airports remain unclassified.



### Closed Facilities

Four facilities are closed to the public or no longer serve as active landing facilities. We will remove them from the NPIAS. These facilities include two seaplane bases in Alaska, an airport that has been replaced by a new publicly owned airport in Alabama, and a publicly owned airport (unobligated) that was sold and converted to private use in Illinois.

### Airports Moving into an ASSET Category

Of the 212 airports moving into an ASSET category:

- 91 airports now meet criteria because they updated their based aircraft data or were recently classified as nonprimary commercial service airports;
- 12 airports are either owned by or serve a Native American community and provide a critical link for the community; and
- 109 were categorized because of information provided through the outreach process. This includes:
  - self-reported based aircraft data;
  - distance to another airport, service to an isolated community;
  - topographical challenges; and
  - input from local FAA offices based on their knowledge of unique situations.

Table 1 below provides a summary of the airports in the original ASSET study and identifies the 212 airports that are now categorized. There are now six states with no unclassified airports (Colorado, Maryland, Nevada, Rhode Island, West Virginia, and Wyoming).

**Table 1. Airport Categories at the end of ASSET 2**

Airport Category	ASSET	Airport Category Totals at End of ASSET 2	ASSET 2 Airports Meeting Criteria
National	84	84	0
Regional	467	468	1
Local	1,236	1,263	27
Basic	668	852	184
Unclassified	497	281	0
Closed	0	4	0
<b>Total</b>	<b>2,952</b>	<b>2,952</b>	<b>212</b>

## Remaining Facilities

A total of 281 facilities will remain in the NPIAS as unclassified. These 281 facilities, shown in Table 2, can be divided into three groups:

- 227 publicly owned facilities with minimal activity;
- 19 privately owned facilities that currently do not meet the required reliever thresholds; and
- 35 privately owned general aviation airports that do not meet required reliever thresholds.

**Table 2. Remaining Facilities by Ownership and Type**

Type of Facility	Airports	Seaplane Bases	Heliports	Total Facilities
Publicly owned with minimal activity	208	12	7	<b>227</b>
Privately owned, not meeting Reliever threshold	19	0	0	<b>19</b>
Privately owned GA, not meeting Reliever thresholds	35	0	0	<b>35</b>
<b>Facilities Remaining Unclassified</b>	<b>262</b>	<b>12</b>	<b>7</b>	<b>281</b>

### *Publicly Owned Airports (227)*

The remaining unclassified airports include 227 publicly owned facilities with few to no based aircraft. Despite the additional data gathered through the in-depth outreach completed in 2013, FAA and the industry team still could not identify an appropriate category for them.

### *Privately Owned Reliever Airports (19)*

Although the majority of the reliever airports identified in the NPIAS are publicly owned, 42 are privately owned. Of these, 19 do not meet the activity thresholds needed for reliever airports. Since privately owned airports are only eligible for inclusion in the NPIAS if they are designated as relievers by FAA, these airports represent a unique group of facilities.

The FAA has not adjusted the designation of any existing reliever airport since 2000. Many of these privately owned airports no longer meet the definition of a reliever airport. The FAA occasionally reviews and validates the reliever criteria and will do so during the next update of the NPIAS order (FAA Order 5090.3). Until then, these airports will remain in the NPIAS as unclassified.

### *Privately Owned GA Airports (35)*

This effort also highlighted 35 privately owned general aviation facilities that do not meet the reliever threshold but have been in the NPIAS for years. Such airports do not usually appear in the NPIAS. These airports are listed because in the past they were either relievers that saw a decrease in their activity and were therefore recategorized as general aviation airports or had been considered for purchase by a public entity therefore meeting the eligibility criteria.

## Summary

After a thorough review of all the information gathered through outreach and coordination with industry stakeholders including the individual 497 airports, the ASSET 2 study was able to identify a role for 212 of the 497 airports that were identified as unclassified in the original ASSET report. These airports are now categorized as either regional, local, or basic.

The ASSET 2 study was unable to categorize 281 airports. The 281 airports will continue to be listed as Unclassified in the NPIAS. While they may not have a clear Federal role today, it is possible that within the next 2 years they may. In addition, four airports are closed or no longer serve as active landing facilities and will be removed from the NPIAS. The NPIAS report to Congress (2015-2019), when released in October 2014, will reflect the information shown in this report.

The FAA will continue to coordinate with state aviation agencies, airport sponsors, and local planning organizations to identify nonprimary airports that are important to the national transportation system. The FAA examines all airports, including the unclassified airports, every 2 years and submits a report to Congress on the airport system. The FAA will reexamine the nonprimary airports every other year as part of the biennial NPIAS report to Congress process. The next review will be in 2016. If at that point a clear role has been identified for an unclassified airport, then we will move the airport into the appropriate category.

Many of the airports identified as unclassified have received Federal funding in the past and may be considered for future funding when they are able to meet the criteria for one of the four ASSET categories. Future development of nonprimary airports will continue to be based on eligible and justified needs and priorities, consistent with the role of the airport in the national system.

# Appendix 1: ASSET 1 Categories and Criteria

Table A-1. ASSET Categories and Criteria

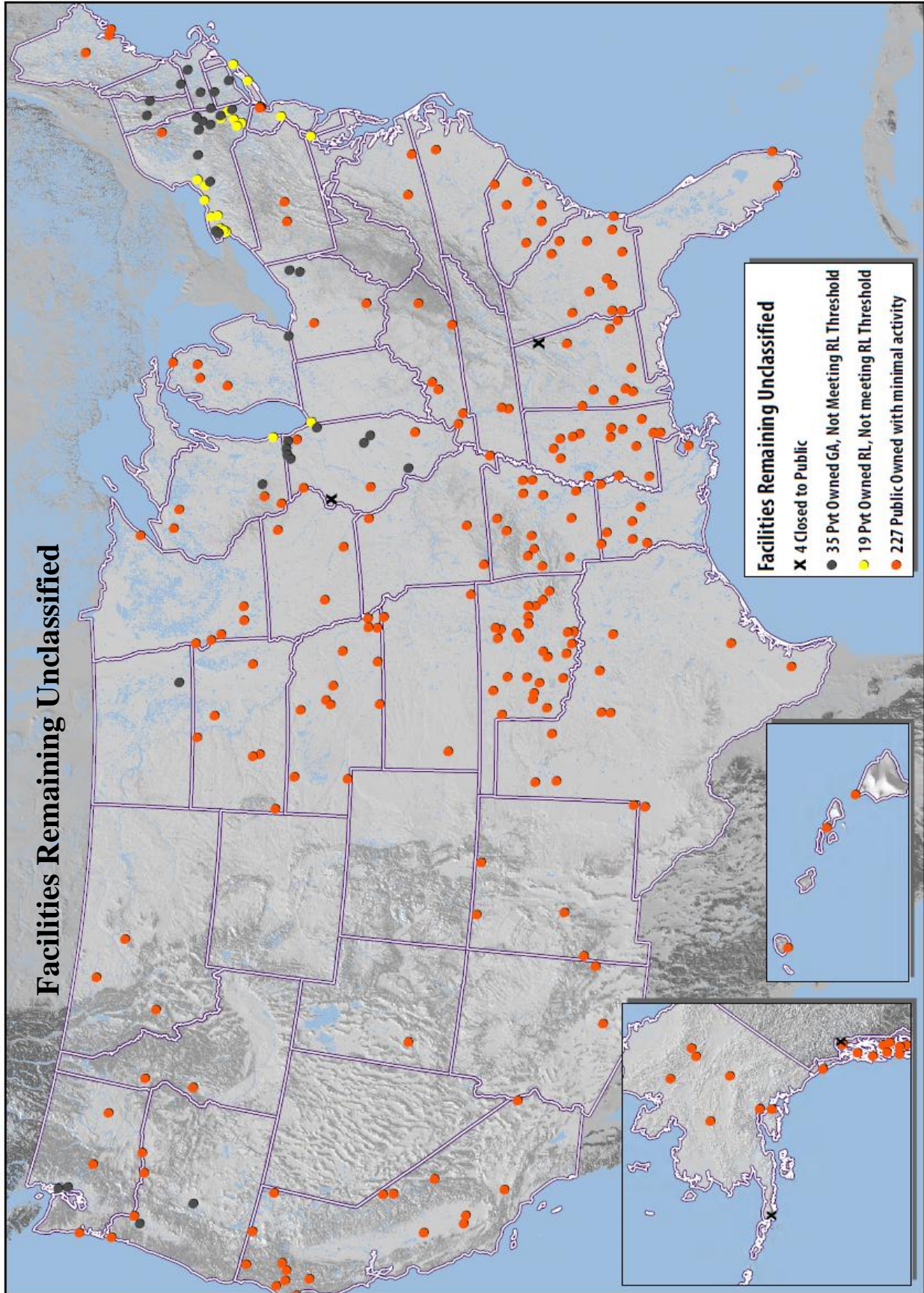
National	Regional	Local	Basic
Supports the national and state system by providing communities with access to national and international markets in multiple states and throughout the United States.	Supports regional economies by connecting communities to statewide and interstate markets.	Supplements communities by providing access to primarily intrastate and some interstate markets.	Links the community with national airport system and supports general aviation activities (e.g., emergency services, charter or critical passenger service, cargo operations, flight training, and personal flying).
<p>Airports in this category have:</p> <ul style="list-style-type: none"> <li>• 5,000 or more Annual Instrument operations,</li> <li>• <u>And</u> 11 or more Based Jets,</li> <li>• <u>And</u> Annual International Flights of 20+ or Interstate Departures of 500+;</li> <li>• OR at least 10,000 annual enplanements and charter passengers service of large certificated air carriers;</li> <li>• OR 500 million pounds of Cargo Landed Weight.</li> </ul>	<p>Airports in this category have:</p> <ul style="list-style-type: none"> <li>• MSA (Metro or Micro),</li> <li>• <u>And</u> 10 Annual domestic flights over 500 miles,</li> <li>• <u>And</u> 1,000 Annual Instrument Operations,</li> <li>• <u>And</u> 1 based jet or 100 or more based aircraft;</li> <li>• OR are Nonprimary CS within MSA – usually not scheduled service but aircraft for hire.</li> </ul>	<p>Airports in this category have:</p> <ul style="list-style-type: none"> <li>• 10 or more Annual Instrument operations,</li> <li>• <u>And</u> 15 or more based aircraft;</li> <li>• OR Annual passenger boardings of 2,500 or more – usually not scheduled service but charter.</li> </ul>	<p>Airports in this category have:</p> <ul style="list-style-type: none"> <li>• 10 or more based aircraft (airports);</li> <li>• OR 4 based helicopters (heliports);</li> <li>• OR 30 or more miles from the nearest NPIAS airport;</li> <li>• OR Critical Community Service Provided by a Federal Service such as: Forest Service, Marshals, Postal Service (Air Stop), Customs/Border Protection, U.S. DOT Essential Air Service</li> <li>• OR is a new airport or replacement facility activated after January 1, 2001.</li> </ul>
<p><i>An airport must currently be eligible for Federal funding.</i></p>			
<p>497 NPIAS airports were not categorized. As a group, they have different activity levels and characteristics and cannot be described in their own unique category.</p>			

## Appendix 2: Breakout of Unclassified, by State

Table A-2. Breakout of Unclassified Airports by State in ASSET and ASSET 2

State	ASSET			ASSET 2			
	Not Categorized	National	Regional	Local	Basic	Closed or Private Use	Unclassified
Alabama	14				4	1	9
Alaska	31			1	11	2	17
Arizona	5				3		2
Arkansas	21			1	7		13
California	20				3		17
Colorado							0
Connecticut	2						2
Delaware	1						1
Florida	3			1			2
Georgia	17			1	4		12
Hawaii	6			1	2		3
Idaho	6				4		2
Illinois	20				7	1	12
Indiana	1						1
Iowa	8			1	4		3
Kansas	13			1	9		3
Kentucky	11			2	3		6
Louisiana	14				6		8
Maine	8		1		4		3
Maryland	2				2		0
Massachusetts	3						3
Michigan	5						5
Minnesota	9			1	2		6
Mississippi	25			1	9		15
Missouri	13				9		4
Montana	4				1		3
Nebraska	19				7		12
Nevada	1				1		0
New Hampshire	1						1
New Jersey	2			1			1
New Mexico	13				8		5
New York	31			1			30
North Carolina	4				3		1
North Dakota	11			2	8		1
Ohio	5				1		4
Oklahoma	40			2	12		26
Oregon	9				3		6
Pennsylvania	4			1	1		2
Rhode Island							0
South Carolina	9				3		6
South Dakota	14				8		6
Tennessee	9			3	4		2
Texas	29			4	15		10
Utah	6				5		1
Vermont	2						2
Virginia	2						2
Washington	10				5		5
West Virginia	2				2		0
Wisconsin	11			2	3		6
Wyoming	1				1		0
<b>Total</b>	<b>497</b>		<b>1</b>	<b>27</b>	<b>184</b>	<b>4</b>	<b>281</b>

# Facilities Remaining Unclassified



## Appendix 3: Airport Disposition by State

---

### Explanation of Terms and Abbreviations Used in Table A-3

<b>State</b>	The state in which airport is located.
<b>City</b>	The city associated with the airport.
<b>Airport</b>	The official name of the airport or designated abbreviation.
<b>Loc Id</b>	The unique airport location identifier.
<b>Ownership</b>	Type of airport ownership: <ul style="list-style-type: none"><li>• Public – PU</li><li>• Private – PR</li><li>• Military – MA (Air Force), MN (Navy), MR (Army)</li></ul>
<b>Service Level</b>	The airport classification by statute: <ul style="list-style-type: none"><li>• Commercial Service – CS</li><li>• Reliever – R</li><li>• General Aviation – GA</li></ul>
<b>Disposition</b>	Role to be shown in next NPIAS report: <ul style="list-style-type: none"><li>• National</li><li>• Regional</li><li>• Local</li><li>• Basic</li><li>• Unclassified</li><li>• Closed</li></ul>
<b>Asterisk *</b>	Airports that did not participate in FAA and State outreach are shown with an * in front of the NPIAS Role in the last column

**Table A-3. Airport Disposition by State after ASSET 2**

State	City	Airport	Loc Id	Ownership	Service Level	Disposition – NPIAS Role
Alabama	Abbeville	Abbeville Muni	OJ0	PU	GA	Unclassified
Alabama	Aliceville	George Downer	AIV	PU	GA	Unclassified
Alabama	Ashland/Lineville	Ashland/Lineville	26A	PU	GA	Unclassified
Alabama	Atmore	Atmore Muni	0R1	PU	GA	Basic
Alabama	Butler	Butler-Choctaw County	09A	PU	GA	Unclassified
Alabama	Centre	Centre Muni	C22	PU	GA	Closed
Alabama	Clayton	Clayton Muni	11A	PU	GA	Unclassified
Alabama	Evergreen	Middleton Field	GZH	PU	GA	Unclassified
Alabama	Greensboro	Greensboro Muni	7A0	PU	GA	Unclassified
Alabama	Grove Hill	Grove Hill Muni	3A0	PU	GA	Unclassified
Alabama	Jackson	Jackson Muni	4R3	PU	GA	Unclassified
Alabama	Marion	Vaiden Field	A08	PU	GA	Basic
Alabama	Selma	Craig Field	SEM	PU	GA	Basic
Alabama	Tuskegee	Moton Field Muni	06A	PU	GA	Basic
Alaska	Baranof	Warm Spring Bay	BNF	PU	GA	Unclassified
Alaska	Birch Creek	Birch Creek	Z91	PU	GA	Basic
Alaska	Chandalar Camp	Chandalar Shelf	5CD	PU	GA	Basic
Alaska	Circle Hot Springs	Circle Hot Springs	CHP	PU	GA	Basic
Alaska	Clear	Clear	Z84	PU	GA	Unclassified
Alaska	Coldfoot	Coldfoot	CXF	PU	CS	Local
Alaska	Cordova	Cordova Muni	CKU	PU	GA	Basic
Alaska	Council	Council	K29	PU	GA	Basic
Alaska	Dahl Creek	Dahl Creek	DCK	PU	GA	Unclassified
Alaska	Galbraith Lake	Galbraith Lake	GBH	PU	GA	Basic
Alaska	Girdwood	Girdwood	AQY	PU	GA	Basic
Alaska	Goose Bay	Goose Bay	Z40	PU	GA	Unclassified
Alaska	Haines	Haines	3Z9	PU	GA	Unclassified
Alaska	Hoonah	Hoonah	OOH	PU	GA	Unclassified
Alaska	Hope	Hope	5HO	PU	GA	Basic
Alaska	Ivanof Bay	Ivanof Bay	KIB	PU	GA	Closed
Alaska	Ketchikan	Murphys Pullout	8K9	PU	GA	Unclassified
Alaska	Klawock	Klawock	AQC	PU	GA	*Unclassified
Alaska	Kodiak	Kodiak Muni	KDK	PU	GA	Basic
Alaska	Meyers Chuck	Meyers Chuck	84K	PU	GA	Unclassified
Alaska	Ophir	Ophir	Z17	PU	GA	Unclassified
Alaska	Petersburg	Lloyd R. Roundtree Seaplane Facility	63A	PU	GA	Unclassified
Alaska	Point Baker	Point Baker	KPB	PU	GA	Unclassified
Alaska	Portage Creek	Portage Creek	A14	PU	GA	Basic
Alaska	Prospect Creek	Prospect Creek	PPC	PU	GA	Unclassified
Alaska	Skagway	Skagway	7K2	PU	GA	Closed
Alaska	Ugashik	Ugashik	9A8	PU	GA	Basic
Alaska	Whittier	Whittier	IEM	PU	GA	Unclassified
Alaska	Wiseman	Wiseman	WSM	PU	GA	Unclassified
Alaska	Wrangell	Wrangell	68A	PU	GA	Unclassified
Alaska	Yakutat	Yakutat	2Y3	PU	GA	Unclassified
Arizona	Clifton/Morenci	Greenlee County	CFT	PU	GA	Unclassified
Arizona	Colorado City	Colorado City Muni	AZC	PU	GA	Basic
Arizona	Marana	Pinal Airpark	MZJ	PU	GA	Unclassified



State	City	Airport	Loc Id	Ownership	Service Level	Disposition – NPIAS Role
Arizona	St Johns	St Johns Industrial Air Park	SJN	PU	GA	Basic
Arizona	Window Rock	Window Rock	RQE	PU	GA	Basic
Arkansas	Almyra	Almyra Muni	M73	PU	GA	Basic
Arkansas	Ash Flat	Sharp County Rgnl	CVK	PU	GA	Local
Arkansas	Augusta	Woodruff County	M60	PU	GA	Unclassified
Arkansas	Calico Rock	Calico Rock-Izard County	37T	PU	GA	Unclassified
Arkansas	Clarendon	Clarendon Muni	4M8	PU	GA	Unclassified
Arkansas	Danville	Danville Muni	32A	PU	GA	Unclassified
Arkansas	Fordyce	Fordyce Muni	5M4	PU	GA	Unclassified
Arkansas	Forrest City	Forrest City Muni	FCY	PU	GA	Unclassified
Arkansas	Marianna	Marianna/Lee County-Steve Edwards Field	6M7	PU	GA	Basic
Arkansas	Marked Tree	Marked Tree Muni	6M8	PU	GA	Basic
Arkansas	Marshall	Searcy County	4A5	PU	GA	Unclassified
Arkansas	McGehee	McGehee Muni	7M1	PU	GA	Unclassified
Arkansas	Morrilton	Petit Jean Park	MPJ	PU	GA	Unclassified
Arkansas	Mount Ida	Bearce	7M3	PU	GA	Basic
Arkansas	Nashville	Howard County	M77	PU	GA	Unclassified
Arkansas	Osceola	Osceola Muni	7M4	PU	GA	Basic
Arkansas	Paris/Subiaco	Paris Muni	7M6	PU	GA	Unclassified
Arkansas	Piggott	Piggott Muni	7M7	PU	GA	Basic
Arkansas	Waldron	Waldron Muni	M27	PU	GA	Unclassified
Arkansas	Warren	Warren Muni	3M9	PU	GA	Basic
Arkansas	Wynne	Wynne Muni	M65	PU	GA	Unclassified
California	Bridgeport	Bryant Field	O57	PU	GA	Unclassified
California	Cedarville	Cedarville	O59	PU	GA	Unclassified
California	Chemehuevi Valley	Chemehuevi Valley	49X	PU	GA	Basic
California	Covelo	Round Valley	O09	PU	GA	Unclassified
California	Dinsmore	Dinsmore	D63	PU	GA	Unclassified
California	Dorris	Butte Valley	A32	PU	GA	Unclassified
California	Eureka	Kneeland	O19	PU	GA	Unclassified
California	Happy Camp	Happy Camp	36S	PU	GA	Unclassified
California	Hayfork	Hayfork	F62	PU	GA	Unclassified
California	Hoopa	Hoopa	O21	PU	GA	Basic
California	Independence	Independence	2O7	PU	GA	Unclassified
California	Lee Vining	Lee Vining	O24	PU	GA	Unclassified
California	Lone Pine	Lone Pine	O26	PU	GA	Basic
California	Lost Hills	Lost Hills-Kern County	L84	PU	GA	Unclassified
California	Mendota	William Robert Johnston Muni	M90	PU	GA	Unclassified
California	Needles	Needles	EED	PU	GA	Unclassified
California	Palmdale	Palmdale USAF Plant 42	PMD	MA	GA	Unclassified
California	Shelter Cove	Shelter Cove	OQ5	PU	GA	Unclassified
California	Wasco	Wasco-Kern County	L19	PU	GA	Unclassified
California	Weaverville	Lonnie Pool Field/Weaverville	O54	PU	GA	Unclassified
Connecticut	Chester	Chester	SNC	PR	GA	Unclassified - Private GA
Connecticut	Simsbury	Simsbury	4B9	PR	GA	Unclassified - Private GA
Delaware	Middletown	Summit	EVY	PR	R	Unclassified
Florida	Everglades	Everglades Airpark	X01	PU	GA	Unclassified
Florida	Miami	Miami	X44	PU	GA	Unclassified

State	City	Airport	Loc Id	Ownership	Service Level	Disposition – NPIAS Role
Florida	Pahokee	Palm Beach Co Glades	PHK	PU	GA	Local
Georgia	Ashburn	Turner County	75J	PU	GA	Unclassified
Georgia	Blakely	Early County	BIJ	PU	GA	Unclassified
Georgia	Butler	Butler Muni	6A1	PU	GA	Basic
Georgia	Cuthbert	Lower Chattahoochee Rgnl	25J	PU	GA	Unclassified
Georgia	Ellijay	Gilmer County	49A	PU	GA	Basic
Georgia	Greensboro	Greene County Rgnl	3J7	PU	GA	Basic
Georgia	Homerville	Homerville	HOE	PU	GA	Unclassified
Georgia	Jekyll Island	Jekyll Island	09J	PU	GA	Unclassified
Georgia	Millen	Millen	2J5	PU	GA	Unclassified
Georgia	Montezuma	Dr. C P Savage Sr.	53A	PU	GA	Unclassified
Georgia	Nahunta	Brantley County	4J1	PU	GA	Unclassified
Georgia	Pine Mountain	Harris County	PIM	PU	GA	Basic
Georgia	Reidsville	Swinton Smith Field at Reidsville Muni	RVJ	PU	GA	Unclassified
Georgia	Sylvester	Sylvester	SYV	PU	GA	Unclassified
Georgia	Warm Springs	Roosevelt Memorial	5A9	PU	GA	Unclassified
Georgia	Washington	Washington-Wilkes County	IYY	PU	GA	Local
Georgia	Wrens	Wrens Memorial	65J	PU	GA	Unclassified
Hawaii	Hana	Hana	HNM	PU	GA	Basic
Hawaii	Hanapepe	Port Allen	PAK	PU	GA	Unclassified
Hawaii	Hawi	Upolu	UPP	PU	GA	Unclassified
Hawaii	Kalaupapa	Kalaupapa	LUP	PU	CS	Local
Hawaii	Kamuela	Waimea-Kohala	MUE	PU	GA	Basic
Hawaii	Lahaina	Kapalua	JHM	PU	GA	Unclassified
Idaho	Aberdeen	Aberdeen Muni	U36	PU	GA	Basic
Idaho	Council	Council Muni	U82	PU	GA	Unclassified
Idaho	Craigmont	Craigmont Muni	S89	PU	GA	Unclassified
Idaho	Kamiah	Kamiah Muni	S73	PU	GA	Basic
Idaho	Kellogg	Shoshone County	S83	PU	GA	Basic
Idaho	Preston	Preston	U10	PU	GA	Basic
Illinois	Aledo	Mercer County	C00	PR	GA	Closed
Illinois	Beardstown	Greater Beardstown	K06	PU	GA	Unclassified
Illinois	Chicago/Schaumburg	Schaumburg Muni Helistop	4H1	PU	GA	Unclassified
Illinois	Fairfield	Fairfield Muni	FWC	PU	GA	Unclassified
Illinois	Flora	Flora Muni	FOA	PU	GA	Basic
Illinois	Grayslake	Campbell	C81	PR	GA	Unclassified - Private GA
Illinois	Greenwood/Wonder Lake	Galt Field	10C	PR	GA	Unclassified - Private GA
Illinois	Harvard	Dacy	0C0	PR	GA	Unclassified - Private GA
Illinois	Havana	Havana Rgnl	9I0	PU	GA	Basic
Illinois	Monee	Bult Field	C56	PR	GA	Unclassified - Private GA
Illinois	Monmouth	Monmouth Muni	C66	PU	GA	Basic
Illinois	Monticello	Piatt County	2K0	PR	GA	Unclassified - Private GA
Illinois	Mount Sterling	Mount Sterling Muni	I63	PU	GA	Basic
Illinois	Pinckneyville	Pinckneyville-Du Quoin	PJY	PU	GA	Basic

State	City	Airport	Loc Id	Ownership	Service Level	Disposition – NPIAS Role
Illinois	Poplar Grove	Poplar Grove	C77	PR	GA	Unclassified - Private GA
Illinois	Robinson	Crawford Co	RSV	PU	GA	Basic
Illinois	Salem	Salem-Leckrone	SLO	PU	GA	Basic
Illinois	Savanna	Tri-Township	SFY	PU	GA	Unclassified
Illinois	St Jacob	St Louis Metro-East/Shafer Field	3K6	PR	GA	Unclassified - Private GA
Illinois	Tuscola	Tuscola	K96	PR	GA	Unclassified - Private GA
Indiana	Griffith	Griffith-Merrillville	05C	PR	R	Unclassified
Iowa	Albia	Albia Muni	4C8	PU	GA	Unclassified
Iowa	Audubon	Audubon County	ADU	PU	GA	Unclassified
Iowa	Belle Plaine	Belle Plaine Muni	TZT	PU	GA	Basic
Iowa	Bloomfield	Bloomfield Muni	4K6	PU	GA	Basic
Iowa	Fort Madison	Fort Madison Muni	FSW	PU	GA	Basic
Iowa	Mapleton	James G. Whiting Memorial Field	MEY	PU	GA	Basic
Iowa	Tipton	Mathews Memorial	8C4	PU	GA	Local
Iowa	West Union	George L Scott Muni	3Y2	PU	GA	Unclassified
Kansas	Anthony	Anthony Muni	ANY	PU	GA	Basic
Kansas	Belleville	Belleville Muni	RPB	PU	GA	Basic
Kansas	Herington	Herington Rgnl	HRU	PU	GA	Basic
Kansas	Lakin	Lakin	36K	PU	GA	Unclassified
Kansas	Lyons	Lyons-Rice County Muni	LYO	PU	GA	Basic
Kansas	Marysville	Marysville Muni	MYZ	PU	GA	Basic
Kansas	Medicine Lodge	Medicine Lodge	K51	PU	GA	Basic
Kansas	Oberlin	Oberlin Muni	OIN	PU	GA	Basic
Kansas	Oswego	Oswego Muni	K67	PU	GA	Unclassified
Kansas	Sabetha	Sabetha Muni	K83	PU	GA	Unclassified
Kansas	Satanta	Satanta Muni	1K9	PU	GA	Local
Kansas	Smith Center	Smith Center Muni	K82	PU	GA	Basic
Kansas	Wakeeney	Trego Wakeeney	0H1	PU	GA	Basic
Kentucky	Cadiz	Lake Barkley State Park	1M9	PU	GA	Unclassified
Kentucky	Falls-Of-Rough	Rough River State Park	2I3	PU	GA	Unclassified
Kentucky	Gilbertsville	Kentucky Dam State Park	M34	PU	GA	Unclassified
Kentucky	Hardinsburg	Breckinridge County	I93	PU	GA	Basic
Kentucky	Hartford	Ohio County	JQD	PU	GA	Unclassified
Kentucky	Jackson	Julian Carroll	JKL	PU	GA	Unclassified
Kentucky	Leitchfield	Grayson County	M20	PU	GA	Basic
Kentucky	Marion	Marion-Crittenden County	5M9	PU	GA	Local
Kentucky	Pine Knot	Mc Creary County	18I	PU	GA	Unclassified
Kentucky	Tompkinsville	Tompkinsville-Monroe County	TZV	PU	GA	Local
Kentucky	West Liberty	West Liberty	9I3	PU	GA	Basic
Louisiana	Coushatta	The Red River	0R7	PU	GA	Unclassified
Louisiana	De Quincy	De Quincy Industrial Airpark	5R8	PU	GA	Basic
Louisiana	Homer	Homer Muni	5F4	PU	GA	Unclassified
Louisiana	Jena	Jena	1R1	PU	GA	Unclassified
Louisiana	Jonesboro	Jonesboro	F88	PU	GA	Basic
Louisiana	Jonesville	Jonesville	L32	PU	GA	Basic
Louisiana	Lake Providence	Byerley	0M8	PU	GA	Unclassified
Louisiana	Many	Hart	3R4	PU	GA	Unclassified
Louisiana	New Orleans	New Orleans Downtown	7N0	PU	GA	Unclassified

State	City	Airport	Loc Id	Ownership	Service Level	Disposition – NPIAS Role
Louisiana	Oak Grove	Kelly-Dumas	9M6	PU	GA	Basic
Louisiana	Oakdale	Allen Parish	ACP	PU	GA	Basic
Louisiana	Springhill	Springhill	SPH	PU	GA	Unclassified
Louisiana	Thibodaux	Thibodaux Muni	L83	PU	GA	Basic
Louisiana	Winnfield	David G Joyce	0R5	PU	GA	Unclassified
Maine	Brunswick	Brunswick Executive	BXM	PU	GA	Regional
Maine	Caribou	Caribou Muni	CAR	PU	GA	Basic
Maine	Dover/Foxcroft	Charles A. Chase Jr. Memorial Field	44B	PU	GA	Unclassified
Maine	Islesboro	Islesboro	57B	PU	GA	Unclassified
Maine	Machias	Machias Valley	MVM	PU	GA	Basic
Maine	Oxford	Oxford County Rgnl	81B	PU	GA	Basic
Maine	Rangeley	Steven A. Bean Muni	8B0	PU	GA	Basic
Maine	Stonington	Stonington Muni	93B	PU	GA	Unclassified
Maryland	Crisfield	Crisfield Muni	W41	PU	GA	Basic
Maryland	Indian Head	Maryland	2W5	PR	R	Basic
Massachusetts	Great Barrington	Walter J. Koladza	GBR	PR	GA	Unclassified - Private GA
Massachusetts	Northampton	Northampton	7B2	PR	GA	Unclassified - Private GA
Massachusetts	Stow	Minute Man Air Field	6B6	PR	GA	Unclassified - Private GA
Michigan	Ewart	Ewart Muni	9C8	PU	GA	Unclassified
Michigan	Grayling	Grayling AAF	GOV	MR	GA	Unclassified
Michigan	Lambertville	Toledo Suburban	DUH	PR	GA	Unclassified - Private GA
Michigan	Mio	Oscoda County Dennis Kauffman Memorial	51M	PU	GA	Unclassified
Michigan	Rogers City	Presque Isle County	PZQ	PU	GA	Unclassified
Minnesota	Longville	Longville Muni	XVG	PU	GA	Local
Minnesota	Madison	Lac Qui Parle County	DXX	PU	GA	Unclassified
Minnesota	Orr	Orr Rgnl	ORB	PU	GA	Basic
Minnesota	Ortonville	Ortonville Muni-Martinson Field	VVV	PU	GA	Unclassified
Minnesota	Silver Bay	Silver Bay Muni	BFW	PU	GA	Unclassified
Minnesota	Springfield	Springfield Muni	D42	PU	GA	Unclassified
Minnesota	St James	St James Muni	JYG	PU	GA	Basic
Minnesota	Tracy	Tracy Muni	TKC	PU	GA	Unclassified
Minnesota	Wheaton	Wheaton Muni	ETH	PU	GA	Unclassified
Mississippi	Ackerman	Ackerman Choctaw County	9M4	PU	GA	*Unclassified
Mississippi	Bay Springs	Thigpen Field	00M	PU	GA	Unclassified
Mississippi	Belzoni	Belzoni Muni	1M2	PU	GA	Basic
Mississippi	Booneville/Baldwyn	Booneville/Baldwyn	8M1	PU	GA	Basic
Mississippi	Charleston	Charleston Muni	09M	PU	GA	Unclassified
Mississippi	Crosby	Crosby Muni	C71	PU	GA	Unclassified
Mississippi	Drew	Ruleville-Drew	M37	PU	GA	Basic
Mississippi	Eupora	Eupora	06M	PU	GA	Unclassified
Mississippi	Forest	G. V. Montgomery	2M4	PU	GA	Unclassified
Mississippi	Hollandale	Hollandale Muni	14M	PU	GA	Unclassified
Mississippi	Lexington	C. A. Moore	19M	PU	GA	Basic
Mississippi	Louisville	Louisville Winston County	LMS	PU	GA	Basic
Mississippi	Lumberton	I H Bass Jr Memorial	4R1	PU	GA	Unclassified
Mississippi	Newton	James H Easom Field	M23	PU	GA	Unclassified

State	City	Airport	Loc Id	Ownership	Service Level	Disposition – NPIAS Role
Mississippi	Okolona	Okolona Muni-Richard Stovall Field	5A4	PU	GA	Basic
Mississippi	Philadelphia	Philadelphia Muni	MPE	PU	GA	Basic
Mississippi	Pittsboro	Calhoun County	04M	PU	GA	Unclassified
Mississippi	Poplarville	Poplarville-Pearl River County	M13	PU	GA	Unclassified
Mississippi	Prentiss	Prentiss-Jefferson Davis County	M43	PU	GA	Unclassified
Mississippi	Quitman	Clarke County	23M	PU	GA	Basic
Mississippi	Richton	Richton-Perry County	M59	PU	GA	Unclassified
Mississippi	Ripley	Ripley	25M	PU	GA	Basic
Mississippi	Vicksburg	Vicksburg Muni	VKS	PU	GA	Unclassified
Mississippi	Water Valley	Water Valley Muni	33M	PU	GA	Unclassified
Mississippi	Winona	Winona-Montgomery County	5A6	PU	GA	Local
Missouri	Bowling Green	Bowling Green Muni	H19	PU	GA	Basic
Missouri	Caruthersville	Caruthersville Memorial	M05	PU	GA	Unclassified
Missouri	Cassville	Cassville Muni	94K	PU	GA	Unclassified
Missouri	Kaiser Lake Ozark	Lee C Fine Memorial	AIZ	PU	GA	Basic
Missouri	Lamar	Lamar Muni	LLU	PU	GA	Basic
Missouri	Linn	Linn State Technical College	1H3	PU	GA	Basic
Missouri	Monticello	Lewis County Rgnl	6M6	PU	GA	Unclassified
Missouri	Mountain Grove	Mountain Grove Memorial	1MO	PU	GA	Unclassified
Missouri	Nevada	Nevada Muni	NVD	PU	GA	Basic
Missouri	Perryville	Perryville Muni	K02	PU	GA	Basic
Missouri	Salem	Salem Memorial	K33	PU	GA	Basic
Missouri	Trenton	Trenton Muni	TRX	PU	GA	Basic
Missouri	Warsaw	Warsaw Muni	RAW	PU	GA	Basic
Montana	Geraldine	Geraldine	5U8	PU	GA	Unclassified
Montana	Harlem	Harlem	48S	PU	GA	Basic
Montana	Philipsburg	Riddick Field	U05	PU	GA	Unclassified
Montana	Valier	Valier	7S7	PU	GA	Unclassified
Nebraska	Alma	Alma Muni	4D9	PU	GA	Unclassified
Nebraska	Atkinson	Stuart-Atkinson Muni	8V2	PU	GA	Basic
Nebraska	Auburn	Farington Field	K01	PU	GA	Unclassified
Nebraska	Bassett	Rock County	RBE	PU	GA	Unclassified
Nebraska	Burwell	Cram Field	BUB	PU	GA	Unclassified
Nebraska	Chappell	Billy G Ray Field	CNP	PU	GA	Unclassified
Nebraska	Creighton	Creighton Muni	6K3	PU	GA	Basic
Nebraska	Curtis	Curtis Muni	47V	PU	GA	Basic
Nebraska	David City	David City Muni	93Y	PU	GA	Unclassified
Nebraska	Greeley	Greeley Muni	99Y	PU	GA	Unclassified
Nebraska	Harvard	Harvard State	08K	PU	GA	Basic
Nebraska	Hebron	Hebron Muni	HJH	PU	GA	Unclassified
Nebraska	Loup City	Loup City Muni	0F4	PU	GA	Basic
Nebraska	Oshkosh	Garden County	OKS	PU	GA	Basic
Nebraska	Pawnee City	Pawnee City Muni	50K	PU	GA	Unclassified
Nebraska	Red Cloud	Red Cloud Muni	7V7	PU	GA	Basic
Nebraska	Rushville	Modisett	9V5	PU	GA	Unclassified
Nebraska	Sargent	Sargent Muni	09K	PU	GA	Unclassified
Nebraska	Tecumseh	Tecumseh Muni	0G3	PU	GA	Unclassified
Nevada	Silver Springs	Silver Springs	SPZ	PU	GA	Basic
New Hampshire	Jaffrey	Jaffrey Airport-Silver Ranch	AFN	PR	GA	Unclassified - Private GA

State	City	Airport	Loc Id	Ownership	Service Level	Disposition – NPIAS Role
New Jersey	Readington	Solberg-Hunterdon	N51	PR	R	Local
New Jersey	Robbinsville	Trenton-Robbinsville	N87	PR	R	Unclassified
New Mexico	Angel Fire	Angel Fire	AXX	PU	GA	Basic
New Mexico	Carrizozo	Carrizozo Muni	F37	PU	GA	Basic
New Mexico	Espanola	Ohkay Owingeh	E14	PU	GA	Basic
New Mexico	Glenwood	Glenwood-Catron County	E94	PU	GA	Unclassified
New Mexico	Jal	Lea County/Jal/	E26	PU	GA	Unclassified
New Mexico	Lovington	Lea County-Zip Franklin Memorial	E06	PU	GA	Basic
New Mexico	Magdalena	Magdalena	N29	PU	GA	Unclassified
New Mexico	Navajo Dam	Navajo Lake	1V0	PU	GA	Unclassified
New Mexico	Questa	Questa Muni Nr 2	N24	PU	GA	Unclassified
New Mexico	Reserve	Reserve	T16	PU	GA	Basic
New Mexico	Shiprock	Shiprock Airstrip	5V5	PU	GA	Basic
New Mexico	Socorro	Socorro Muni	ONM	PU	GA	Basic
New Mexico	Springer	Springer Muni	S42	PU	GA	Basic
New York	Akron	Akron	9G3	PR	R	Unclassified
New York	Brockport	Ledgesdale Airpark	7G0	PR	R	Unclassified
New York	Buffalo	Buffalo Airfield	9G0	PR	R	*Unclassified
New York	Duanesburg	Duanesburg	4B1	PR	GA	Unclassified - Private GA
New York	East Moriches	Spadaro	1N2	PR	R	Unclassified
New York	Freehold	Freehold	1I5	PR	GA	Unclassified - Private GA
New York	Gasport	Royalton	9G5	PR	GA	*Unclassified - Private GA
New York	Kingston	Kingston-Ulster	20N	PR	R	Unclassified
New York	Lake Placid	Lake Placid	LKP	PU	GA	Local
New York	Lancaster	Buffalo-Lancaster Rgnl	BQR	PR	R	Unclassified
New York	Le Roy	Le Roy	5G0	PR	R	Unclassified
New York	Lockport	North Buffalo Suburban	0G0	PR	GA	Unclassified - Private GA
New York	Middletown	Randall	06N	PR	R	Unclassified
New York	Millbrook	Sky Acres	44N	PR	R	Unclassified
New York	Montauk	Montauk	MTP	PR	R	Unclassified
New York	New York	Downtown Manhattan/Wall St	JRB	PU	GA	Unclassified
New York	New York	East 34th Street	6N5	PU	GA	Unclassified
New York	New York	New York Skyports Inc	6N7	PU	GA	Unclassified
New York	New York	West 30th St.	JRA	PU	GA	Unclassified
New York	Red Hook	Sky Park	46N	PR	GA	*Unclassified - Private GA
New York	Schroon Lake	Schroon Lake	4B7	PU	GA	*Unclassified
New York	Skaneateles	Skaneateles Aero Drome	6B9	PR	GA	Unclassified - Private GA
New York	South Bethlehem	South Albany	4B0	PR	GA	Unclassified - Private GA
New York	Stormville	Stormville	N69	PR	GA	*Unclassified - Private GA
New York	Syracuse	Syracuse Suburban	6NK	PR	R	*Unclassified
New York	Troy	Rensselaer County	5B7	PR	GA	*Unclassified - Private GA

State	City	Airport	Loc Id	Ownership	Service Level	Disposition – NPIAS Role
New York	Utica/Frankfort	Frankfort-Highland	6B4	PR	GA	Unclassified - Private GA
New York	Wallkill	Kobelt	N45	PR	R	*Unclassified
New York	Weedsport	Whitfords	B16	PR	R	Unclassified
New York	Williamson/Sodus	Williamson-Sodus	SDC	PR	R	Unclassified
New York	Wurtsboro	Wurtsboro-Sullivan County	N82	PR	R	*Unclassified
North Carolina	Ahoskie	Tri-County	ASJ	PU	GA	Basic
North Carolina	Engelhard	Hyde County	7W6	PU	GA	Basic
North Carolina	Tarboro	Tarboro-Edgecombe	ETC	PU	GA	Unclassified
North Carolina	Williamston	Martin County	MCZ	PU	GA	Basic
North Dakota	Cando	Cando Muni	9D7	PU	GA	Basic
North Dakota	Cavalier	Cavalier Muni	2C8	PU	GA	Local
North Dakota	Edgeley	Edgeley Muni	51D	PU	GA	Basic
North Dakota	Ellendale	Ellendale Muni	4E7	PU	GA	Basic
North Dakota	Fort Yates	Standing Rock	Y27	PU	GA	Basic
North Dakota	Hazen	Mercer County Rgnl	HZE	PU	GA	Basic
North Dakota	La Moure	La Moure Rott Muni	4F9	PR	GA	Unclassified - Private GA
North Dakota	Mohall	Mohall Muni	HBC	PU	GA	Local
North Dakota	Mott	Mott Muni	3P3	PU	GA	Basic
North Dakota	Parshall	Parshall-Hankins	Y74	PU	GA	Basic
North Dakota	Walhalla	Walhalla Muni	96D	PU	GA	Basic
Ohio	Alliance	Barber	2D1	PR	GA	Unclassified - Private GA
Ohio	Batavia	Clermont County	169	PU	GA	Basic
Ohio	Upper Sandusky	Wyandot County	56D	PU	GA	Unclassified
Ohio	Warren	Warren	62D	PR	GA	Unclassified - Private GA
Ohio	Waverly	Pike County	EOP	PU	GA	Unclassified
Oklahoma	Antlers	Antlers Muni	80F	PU	GA	Basic
Oklahoma	Beaver	Beaver Muni	K44	PU	GA	Basic
Oklahoma	Bristow	Jones Memorial	3F7	PU	GA	Basic
Oklahoma	Canadian	Arrowhead	91F	PU	GA	Unclassified
Oklahoma	Carnegie	Carnegie Muni	86F	PU	GA	Unclassified
Oklahoma	Chandler	Chandler Rgnl	CQB	PU	GA	Unclassified
Oklahoma	Cheyenne	Mignon Laird Muni	93F	PU	GA	Basic
Oklahoma	Cleveland	Cleveland Muni	95F	PU	GA	Unclassified
Oklahoma	Clinton	Clinton-Sherman	CSM	PU	GA	Unclassified
Oklahoma	Cordell	Cordell Muni	F36	PU	GA	Unclassified
Oklahoma	Eufaula	Eufaula Muni	F08	PU	GA	Local
Oklahoma	Eufaula	Fountainhead Lodge Airpark	0F7	PU	GA	Unclassified
Oklahoma	Gage	Gage	GAG	PU	GA	Unclassified
Oklahoma	Grandfield	Grandfield Muni	1O1	PU	GA	Basic
Oklahoma	Healdton	Healdton Muni	F32	PU	GA	Unclassified
Oklahoma	Henryetta	Henryetta Muni	F10	PU	GA	*Unclassified
Oklahoma	Hinton	Hinton Muni	2O8	PU	GA	Unclassified
Oklahoma	Holdenville	Holdenville Muni	F99	PU	GA	Basic
Oklahoma	Hominy	Hominy Muni	H92	PU	GA	Unclassified
Oklahoma	Ketchum	South Grand Lake Rgnl	1K8	PU	GA	Basic
Oklahoma	Kingston	Lake Texoma State Park	F31	PU	GA	Unclassified

State	City	Airport	Loc Id	Ownership	Service Level	Disposition – NPIAS Role
Oklahoma	Lindsay	Lindsay Muni	1K2	PU	GA	Unclassified
Oklahoma	Madill	Madill Muni	1F4	PU	GA	Basic
Oklahoma	Mangum	Scott Field	2K4	PU	GA	Unclassified
Oklahoma	Okeene	Christman Airfield	O65	PU	GA	Unclassified
Oklahoma	Okemah	Okemah Flying Field	F81	PU	GA	Unclassified
Oklahoma	Overbrook	Lake Murray State Park	1F1	PU	GA	Unclassified
Oklahoma	Pawnee	Pawnee Muni	H97	PU	GA	Unclassified
Oklahoma	Prague	Prague Muni	O47	PU	GA	Basic
Oklahoma	Purcell	Purcell Muni - Steven E. Shephard Field	3O3	PU	GA	Unclassified
Oklahoma	Sayre	Sayre Muni	3O4	PU	GA	Basic
Oklahoma	Seminole	Seminole Muni	SRE	PU	GA	Local
Oklahoma	Stigler	Stigler Rgnl	GZL	PU	GA	Basic
Oklahoma	Stroud	Stroud Muni	SUD	PU	GA	Unclassified
Oklahoma	Sulphur	Sulphur Muni	F30	PU	GA	Basic
Oklahoma	Talihina	Talihina Muni	6F1	PU	GA	Unclassified
Oklahoma	Tishomingo	Tishomingo Airpark	0F9	PU	GA	Unclassified
Oklahoma	Walters	Walters Muni	3O5	PU	GA	Unclassified
Oklahoma	Waynoka	Waynoka Muni	1K5	PU	GA	Unclassified
Oklahoma	Wilburton	Wilburton Muni	H05	PU	GA	Unclassified
Oregon	Boardman	Boardman	M50	PU	GA	Unclassified
Oregon	Cave Junction	Illinois Valley	3S4	PU	GA	Basic
Oregon	Lexington	Lexington	9S9	PU	GA	Basic
Oregon	Myrtle Creek	Myrtle Creek Muni	16S	PU	GA	Basic
Oregon	Newberg	Sportsman Airpark	2S6	PR	GA	Unclassified - Private GA
Oregon	Portland	Portland Downtown	61J	PU	GA	Unclassified
Oregon	Seaside	Seaside Muni	56S	PU	GA	Unclassified
Oregon	Sunriver	Sunriver	S21	PR	GA	*Unclassified - Private GA
Oregon	Wasco	Wasco State	35S	PU	GA	Unclassified
Pennsylvania	Ebensburg	Ebensburg	9G8	PU	GA	Basic
Pennsylvania	Grove City	Grove City	29D	PU	GA	Local
Pennsylvania	Philipsburg	Mid-State	PSB	PU	GA	*Unclassified
Pennsylvania	Punxsutawney	Punxsutawney Muni	N35	PU	GA	Unclassified
South Carolina	Andrews	Robert F Swinnie	PHH	PU	GA	Unclassified
South Carolina	Bamberg	Bamberg County	99N	PU	GA	Unclassified
South Carolina	Bishopville	Lee County-Butters Field	52J	PU	GA	Unclassified
South Carolina	Dillon	Dillon County	DLC	PU	GA	Unclassified
South Carolina	Loris	Twin City	5J9	PU	GA	Basic
South Carolina	Marion	Marion County	MAO	PU	GA	Basic
South Carolina	Pageland	Pageland	PYG	PU	GA	Basic
South Carolina	Saluda	Saluda County	6J4	PU	GA	Unclassified
South Carolina	St George	St George	6J2	PU	GA	Unclassified
South Dakota	Britton	Britton Muni	BTN	PU	GA	Basic
South Dakota	Desmet	Wilder	6E5	PU	GA	Basic
South Dakota	Edgemont	Edgemont Muni	6V0	PU	GA	Unclassified
South Dakota	Gregory	Gregory Muni - Flynn Fld	9D1	PU	GA	Basic
South Dakota	Higmore	Higmore Muni	9D0	PU	GA	Basic
South Dakota	Hoven	Hoven Muni	9F8	PU	GA	Unclassified



State	City	Airport	Loc Id	Ownership	Service Level	Disposition – NPIAS Role
South Dakota	Howard	Howard Muni	8D9	PU	GA	Unclassified
South Dakota	Kadoka	Kadoka Muni	5V8	PU	GA	Unclassified
South Dakota	Mc Laughlin	Mc Laughlin Muni	5P2	PU	GA	Unclassified
South Dakota	Parkston	Parkston Muni	8V3	PU	GA	Basic
South Dakota	Philip	Philip	PHP	PU	GA	Unclassified
South Dakota	Pine Ridge	Pine Ridge	IEN	PU	GA	Basic
South Dakota	Sisseton	Sisseton Muni	8D3	PU	GA	Basic
South Dakota	Webster	The Sigurd Anderson	1D7	PU	GA	Basic
Tennessee	Centerville	Centerville Muni	GHM	PU	GA	Local
Tennessee	Clifton	Hassell Field	M29	PU	GA	Unclassified
Tennessee	Copperhill	Martin Campbell Field	1A3	PU	GA	Basic
Tennessee	Gainesboro	Jackson County	1A7	PU	GA	Basic
Tennessee	Lafayette	Lafayette Muni	3M7	PU	GA	Basic
Tennessee	Linden	Perry County	M15	PU	GA	Unclassified
Tennessee	Livingston	Livingston Muni	8A3	PU	GA	Local
Tennessee	Smithville	Smithville Muni	0A3	PU	GA	Basic
Tennessee	Waverly	Humphreys County	0M5	PU	GA	Local
Texas	Alice	Alice Intl	ALI	PU	GA	Local
Texas	Aspermont	Stonewall County	T60	PU	GA	Basic
Texas	Caddo Mills	Caddo Mills Muni	7F3	PU	GA	Basic
Texas	Cameron	Cameron Muni Airpark	T35	PU	GA	Basic
Texas	Clarksville	Clarksville/Red River Cty-J D Trissell Fld	LBR	PU	GA	Basic
Texas	Commerce	Commerce Muni	2F7	PU	GA	Basic
Texas	Cuero	Cuero Muni	T71	PU	GA	Unclassified
Texas	Dallas	Dallas Cbd Vertiport	49T	PU	GA	Unclassified
Texas	Dimmitt	Dimmitt Muni	T55	PU	GA	Unclassified
Texas	Falfurrias	Brooks County	BKS	PU	GA	Unclassified
Texas	Gatesville	Gatesville Muni	GOP	PU	GA	Basic
Texas	Gladewater	Gladewater Muni	07F	PU	GA	Basic
Texas	Gruver	Gruver Muni	E19	PU	GA	Basic
Texas	Haskell	Haskell Muni	15F	PU	GA	Unclassified
Texas	Hearne	Hearne Muni	LHB	PU	GA	Basic
Texas	Houston	West Houston	IWS	PR	R	Basic
Texas	Jacksboro	Jacksboro Muni	21F	PU	GA	Unclassified
Texas	Kenedy	Karnes County	2R9	PU	GA	Basic
Texas	Kountze/Silsbee	Hawthorne Field	45R	PU	GA	Local
Texas	Memphis	Memphis Muni	F21	PU	GA	Unclassified
Texas	Mulshoe	Mulshoe Muni	2T1	PU	GA	Basic
Texas	Pampa	Perry Lefors Field	PPA	PU	GA	Local
Texas	Perryton	Perryton Ochiltree County	PYX	PU	GA	Local
Texas	Post	Post-Garza County Muni	5F1	PU	GA	Basic
Texas	Quanah	Quanah Muni	F01	PU	GA	Basic
Texas	Stamford	Arledge Field	F56	PU	GA	Unclassified
Texas	Vega	Oldham County	E52	PU	GA	Unclassified
Texas	Wellington	Marian Airpark	F06	PU	GA	Basic
Texas	Wink	Winkler County	INK	PU	GA	Unclassified
Utah	Beaver	Beaver Muni	U52	PU	GA	Basic
Utah	Bryce Canyon	Bryce Canyon	BCE	PU	GA	Basic
Utah	Duchesne	Duchesne Muni	U69	PU	GA	Basic

State	City	Airport	Loc Id	Ownership	Service Level	Disposition – NPIAS Role
Utah	Green River	Green River Muni	U34	PU	GA	Basic
Utah	Milford	Milford Municipal Airport/Ben and Judy Briscoe Field	MLF	PU	GA	Unclassified
Utah	Panguitch	Panguitch Muni	U55	PU	GA	Basic
Vermont	Post Mills	Post Mills	2B9	PR	GA	Unclassified - Private GA
Vermont	Warren	Warren-Sugarbush	0B7	PR	GA	Unclassified - Private GA
Virginia	Brookneal	Brookneal/Campbell County	0V4	PU	GA	Unclassified
Virginia	Emporia	Emporia-Greenville Rgnl	EMV	PU	GA	Unclassified
Washington	Cle Elum	Cle Elum Muni	S93	PU	GA	*Unclassified
Washington	Electric City	Grand Coulee Dam	3W7	PU	GA	Basic
Washington	Ione	Ione Muni	S23	PU	GA	Basic
Washington	Kenmore	Kenmore Air Harbor Inc	S60	PR	GA	Unclassified - Private GA
Washington	Langley	Whidbey Air Park	W10	PR	GA	*Unclassified - Private GA
Washington	Ocean Shores	Ocean Shores Muni	W04	PU	GA	Unclassified
Washington	Odessa	Odessa Muni	43D	PU	GA	Basic
Washington	Ritzville	Pru Field	33S	PU	GA	Unclassified
Washington	Rosalia	Rosalia Muni	72S	PU	GA	Basic
Washington	Winthrop	Methow Valley State	S52	PU	GA	Basic
West Virginia	Moundsville	Marshall County	MPG	PU	GA	Basic
West Virginia	Pineville	Kee Field	I16	PU	GA	Basic
Wisconsin	Cable	Cable Union	3CU	PU	GA	Unclassified
Wisconsin	Crandon	Crandon/Steve Conway Muni	Y55	PU	GA	Basic
Wisconsin	Crivitz	Crivitz Muni	3D1	PU	GA	Basic
Wisconsin	Ephraim	Ephraim-Gibraltar	3D2	PU	GA	Local
Wisconsin	La Pointe	Major Gilbert Field	4R5	PU	GA	Basic
Wisconsin	Lancaster	Lancaster Muni	73C	PU	GA	Unclassified
Wisconsin	New Lisbon	Mauston-New Lisbon Union	82C	PU	GA	Local
Wisconsin	Park Falls	Park Falls Muni	PKF	PU	GA	Unclassified
Wisconsin	Prairie Du Sac	Sauk-Prairie	91C	PR	GA	Unclassified - Private GA
Wisconsin	Racine	John H Batten	RAC	PR	R	Unclassified
Wisconsin	Richland Center	Richland	93C	PU	GA	Unclassified
Wyoming	Big Piney	Miley Memorial Field	BPI	PU	GA	Basic