

This map displays the National Public Infrastructure Airport System (NPIAS) airports in the Eastern United States. The airports are categorized by size and type, as indicated by the legend:

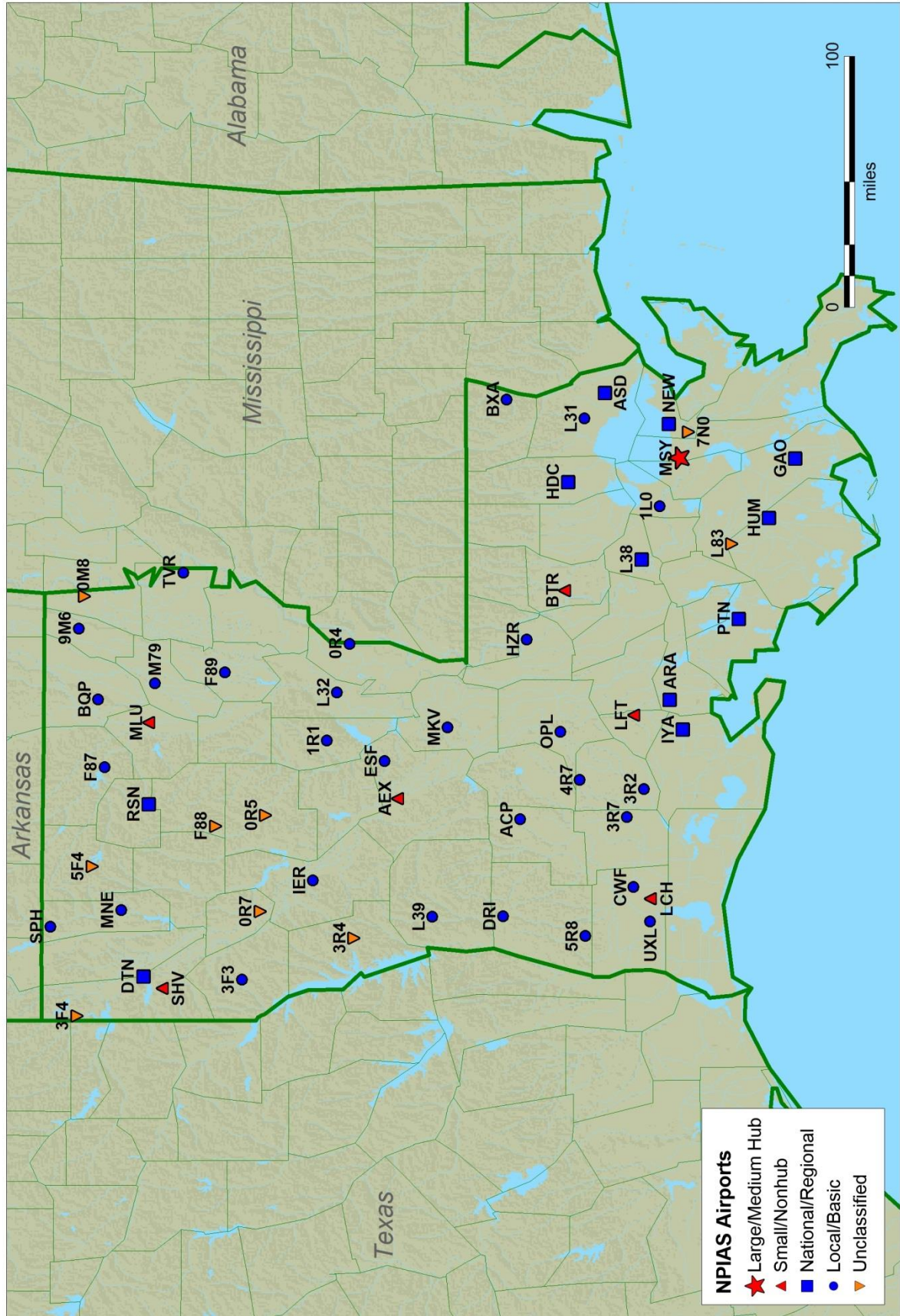
- Large/Medium Hub:** Represented by a red star.
- Small/Nonhub:** Represented by a red triangle.
- National/Regional:** Represented by a blue square.
- Local/Basic:** Represented by a blue circle.
- Unclassified:** Represented by an orange triangle.

The map shows the following airports and their locations:

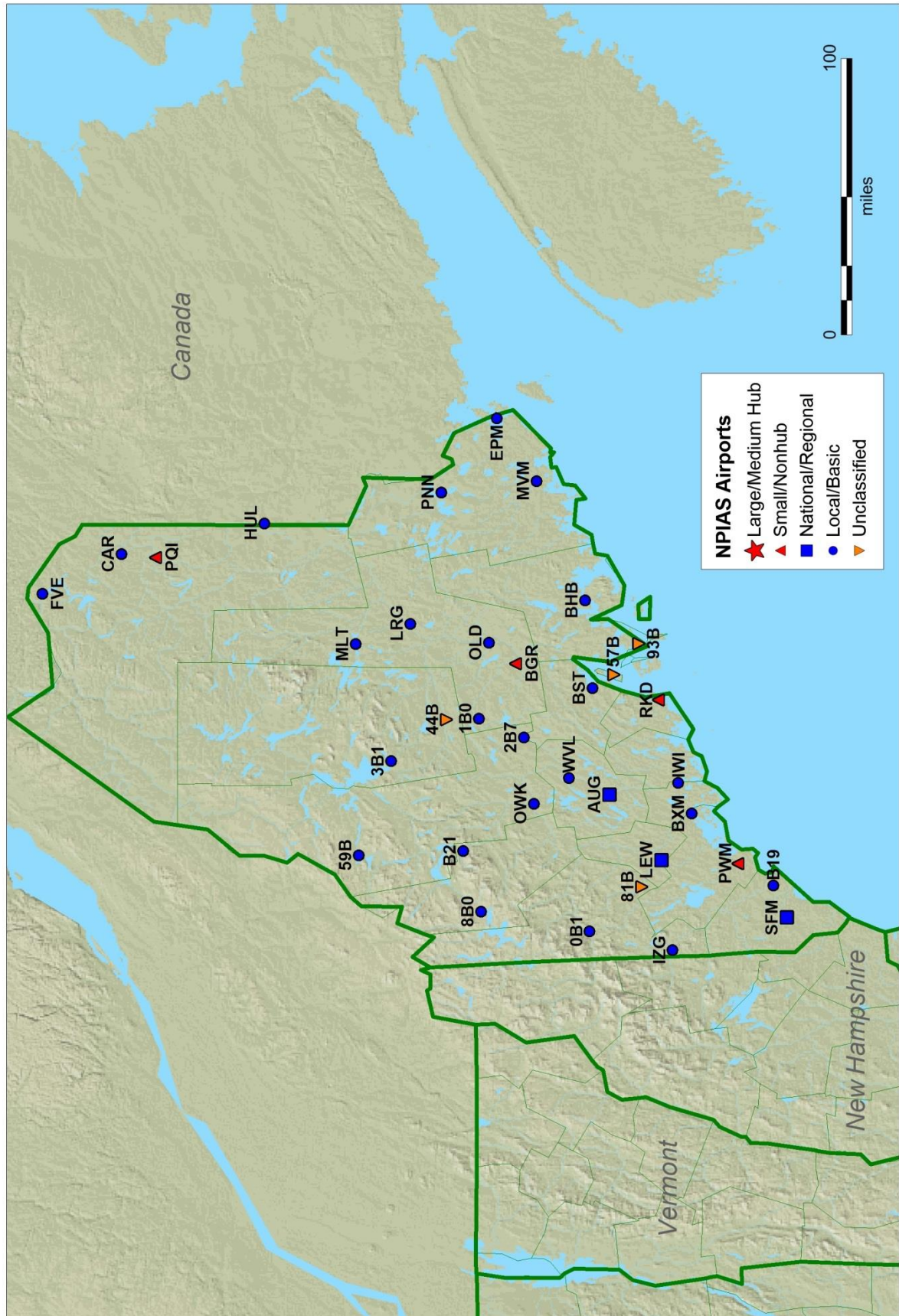
- Large/Medium Hub:** Chicago (MDW) in Illinois.
- Small/Nonhub:** Lexington (LEX) in Kentucky, Owensboro (OWB) in Kentucky, and Paducah (PAH) in Kentucky.
- National/Regional:** Louisville (LOU) in Kentucky, Fayetteville (FFT) in Arkansas, and several others in Tennessee, Virginia, and West Virginia.
- Local/Basic:** Numerous airports across the region, including Cincinnati (CVG) in Ohio, Dayton (DWU) in Ohio, and many others in Kentucky, Tennessee, Virginia, and West Virginia.
- Unclassified:** Several airports, including 1A6 in Tennessee, 18I in Tennessee, and 1M7 in Missouri.

The map also shows the state boundaries and major cities in the region, including Chicago, Indianapolis, Cincinnati, Louisville, Knoxville, Nashville, Memphis, and Atlanta.

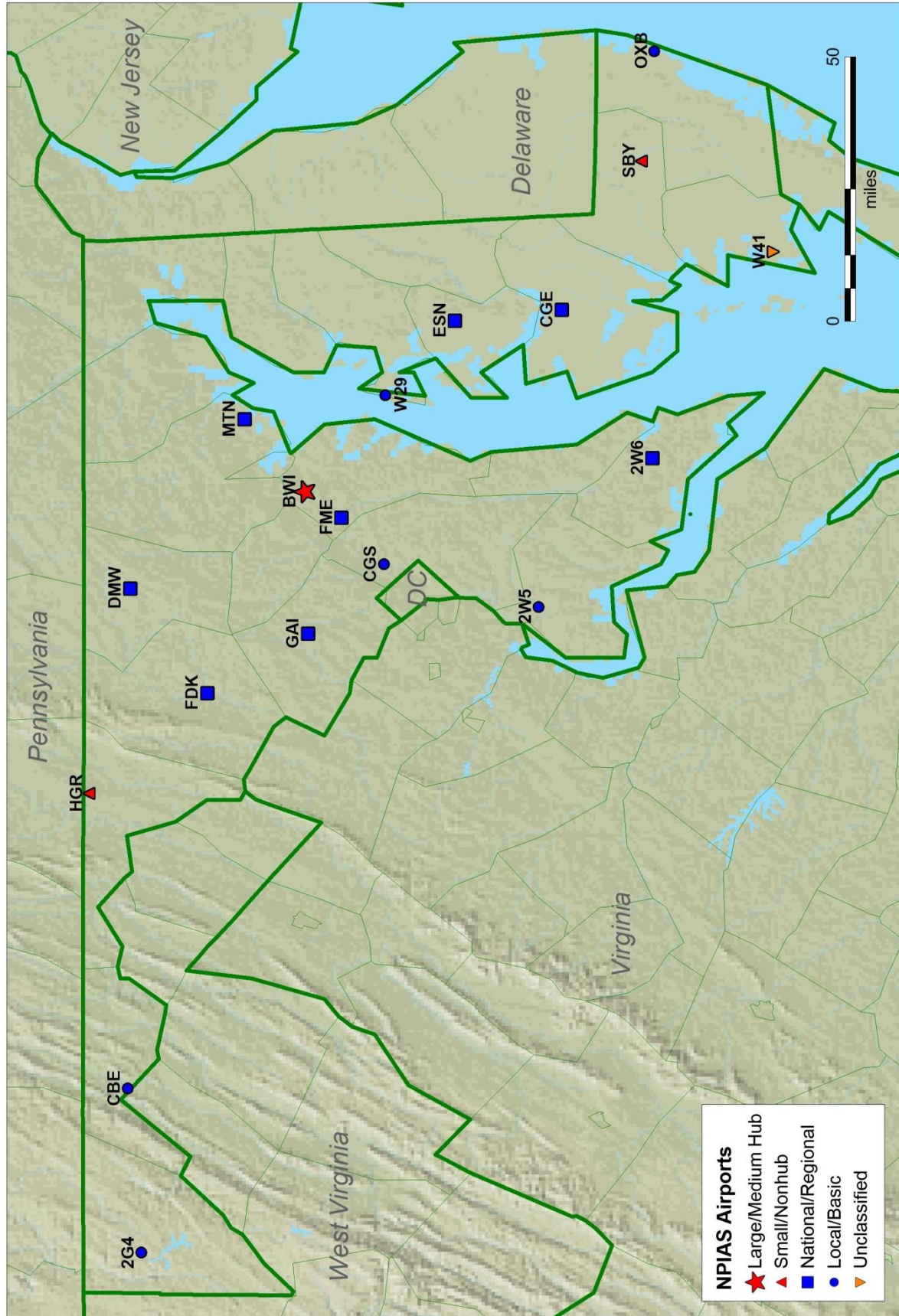
Louisiana



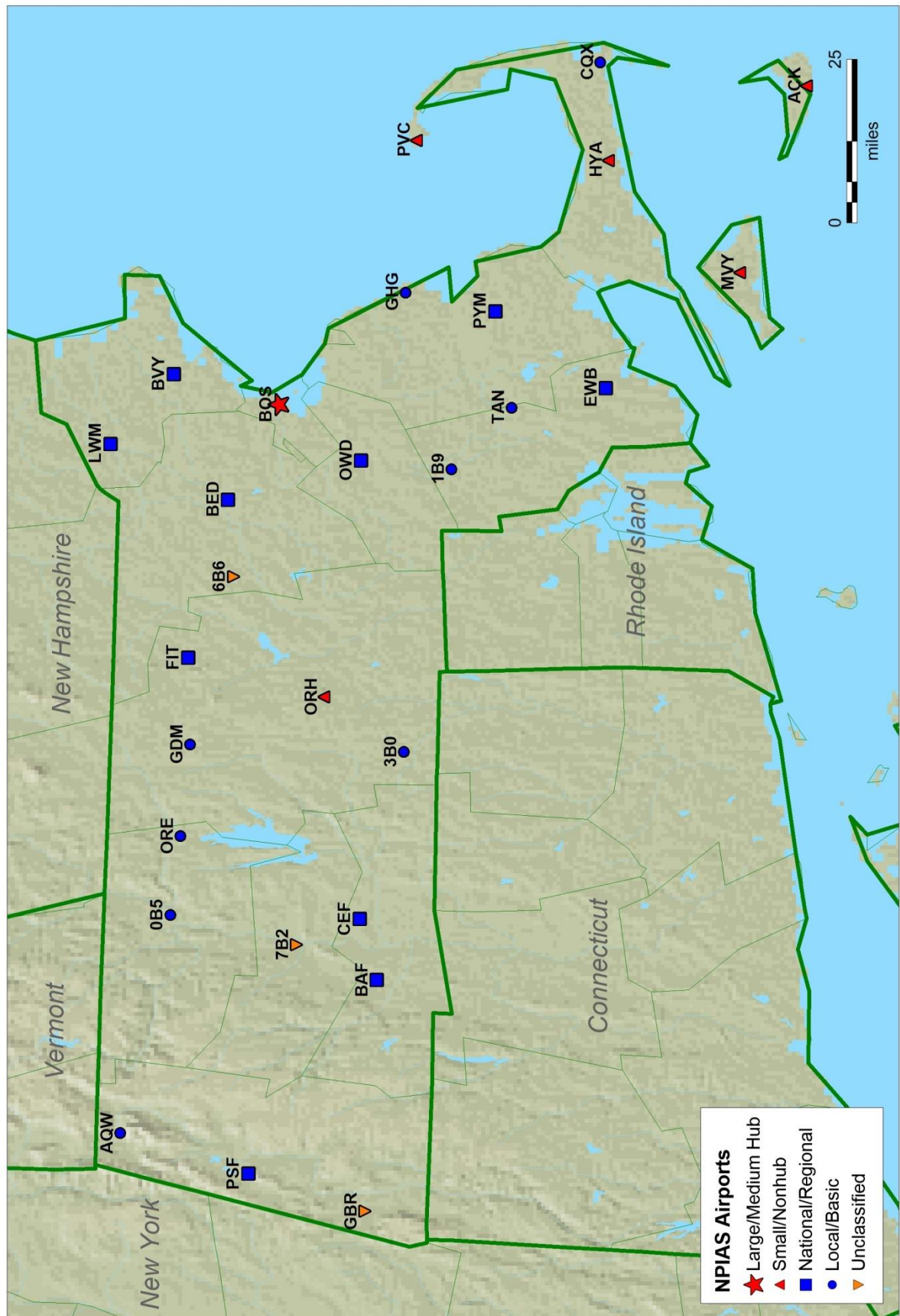
Maine



Maryland



Massachusetts



This map displays the National Public Infrastructure Advisory Studies (NPIAS) airports in the Chicago area. The map includes the following information:

- Legend:**
 - Large/Medium Hub: Red star
 - Small/Nonhub: Red triangle
 - National/Regional: Blue square
 - Local/Basic: Blue circle
 - Unclassified: Orange triangle
- Airport Codes:**
 - Large/Medium Hub: MDW (Chicago Midway International Airport)
 - Small/Nonhub: ORD (Chicago O'Hare International Airport)
 - National/Regional: MKE (Milwaukee Mitchell International Airport), IND (Indianapolis International Airport), PIT (Pittsburgh International Airport), ERI (Erie International Airport), SBN (South Bend International Airport), YIP (Ypsilanti-Willoughby Executive Airport), ONZ (Ontario International Airport), DTW (Detroit Metropolitan Wayne County Airport), YUL (Montreal-Mirabel International Airport), YVR (Vancouver International Airport), YEG (Edmonton International Airport), YLB (Lethbridge International Airport), YKA (Kelowna International Airport), YXJ (Saskatoon John G. Diefenbaker International Airport), YZF (Zurich International Airport), YUL (Montreal-Mirabel International Airport), YVR (Vancouver International Airport), YEG (Edmonton International Airport), YLB (Lethbridge International Airport), YKA (Kelowna International Airport), YXJ (Saskatoon John G. Diefenbaker International Airport), YZF (Zurich International Airport).
 - Local/Basic: LGA (LaGuardia Airport), LAX (Los Angeles International Airport), SFO (San Francisco International Airport), JFK (John F. Kennedy International Airport), ORD (Chicago O'Hare International Airport), MDW (Chicago Midway International Airport), MKE (Milwaukee Mitchell International Airport), IND (Indianapolis International Airport), PIT (Pittsburgh International Airport), ERI (Erie International Airport), SBN (South Bend International Airport), YIP (Ypsilanti-Willoughby Executive Airport), ONZ (Ontario International Airport), DTW (Detroit Metropolitan Wayne County Airport), YUL (Montreal-Mirabel International Airport), YVR (Vancouver International Airport), YEG (Edmonton International Airport), YLB (Lethbridge International Airport), YKA (Kelowna International Airport), YXJ (Saskatoon John G. Diefenbaker International Airport), YZF (Zurich International Airport).
 - Unclassified: Various smaller airports throughout the region.
- Geography:** The map shows the Great Lakes region, including Lake Superior, Lake Michigan, Lake Huron, Lake Erie, and Lake Ontario. Major cities like Chicago, Milwaukee, Indianapolis, Pittsburgh, Erie, South Bend, Ypsilanti, Ontario, Detroit, Montreal, Vancouver, Edmonton, Lethbridge, Kelowna, Saskatoon, and Zurich are labeled.
- Scale:** A scale bar indicates distances in miles (0 to 100).

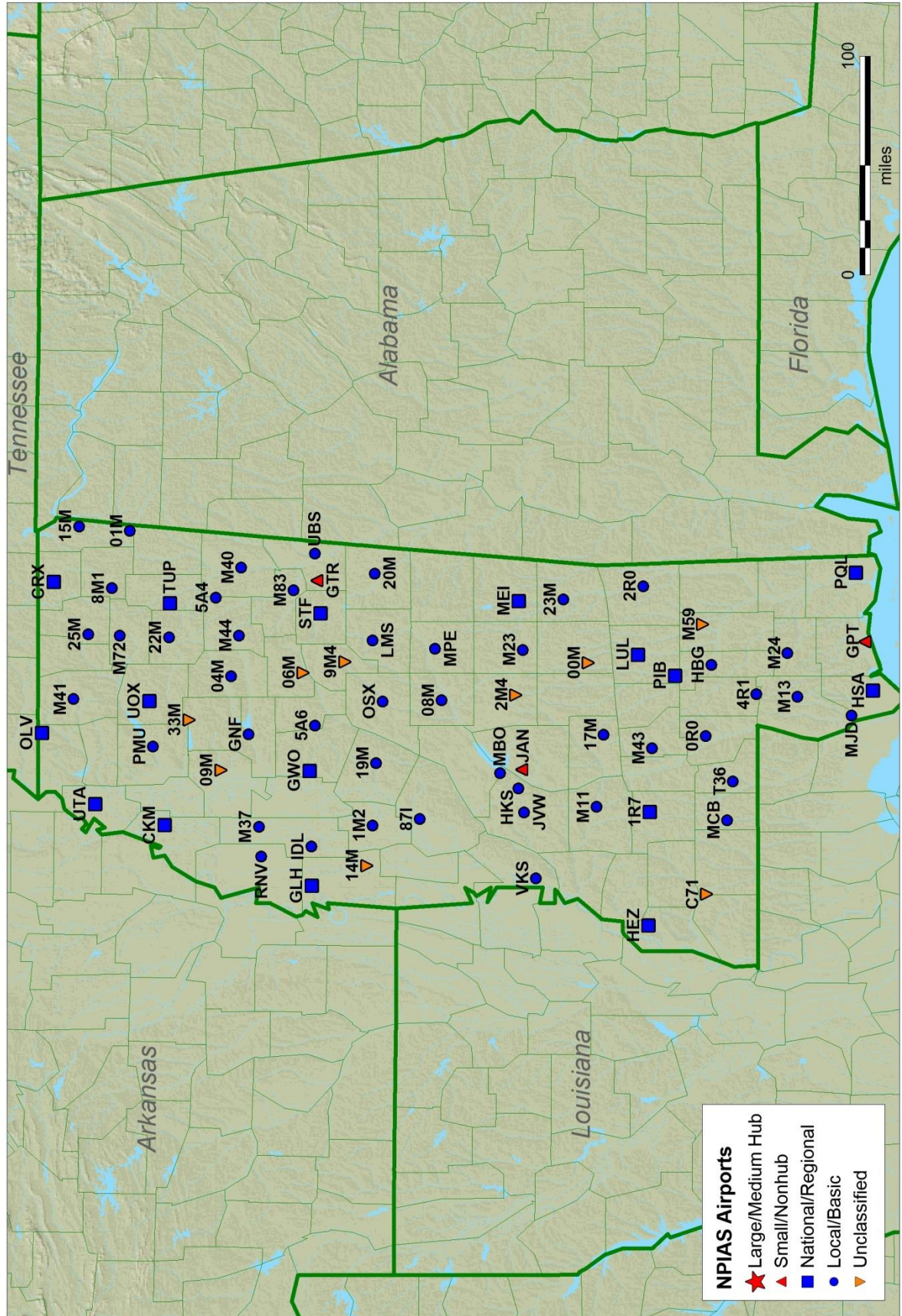
This map displays the locations of National Public Infrastructure Airport System (NPIAS) airports across North Dakota. The state's borders with Canada to the north, South Dakota to the south, and Minnesota to the east are clearly marked. Major water bodies, including Lake Superior and Lake Michigan, are shown in blue. A scale bar in the bottom right corner indicates distances up to 100 miles.

The legend identifies five categories of airports:

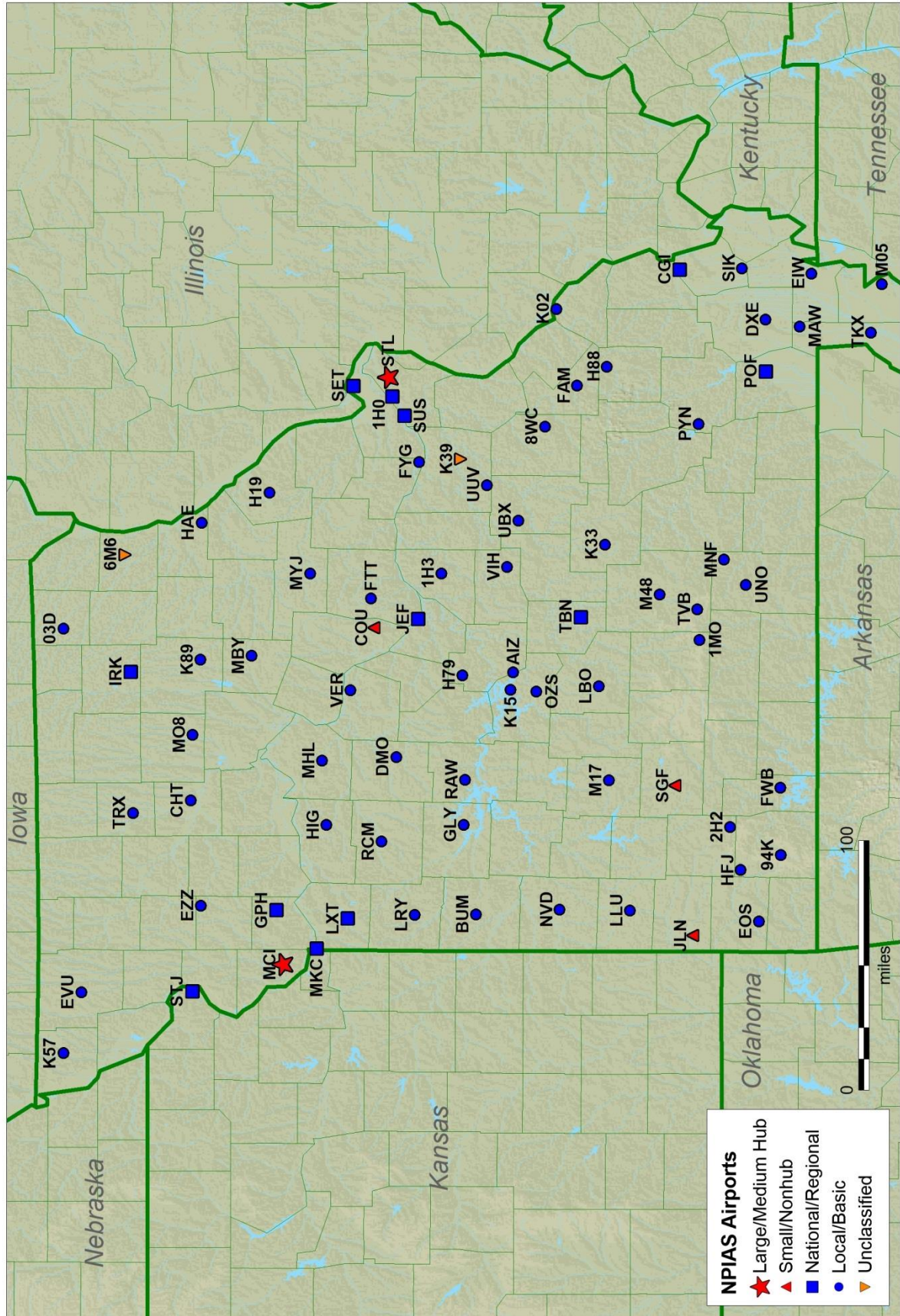
- Large/Medium Hub:** Represented by a red star symbol.
- Small/Nonhub:** Represented by a red triangle symbol.
- National/Regional:** Represented by a blue square symbol.
- Local/Basic:** Represented by a blue circle symbol.
- Unclassified:** Represented by an orange triangle symbol.

Key airports identified on the map include Grand Forks International (Large/Medium Hub), Minot International (National/Regional), and numerous other regional and local airports such as Bismarck, Dickinson, and Williston. The map also shows major transportation corridors like Interstate 94 running through the center of the state.

Mississippi



Missouri



Montana

