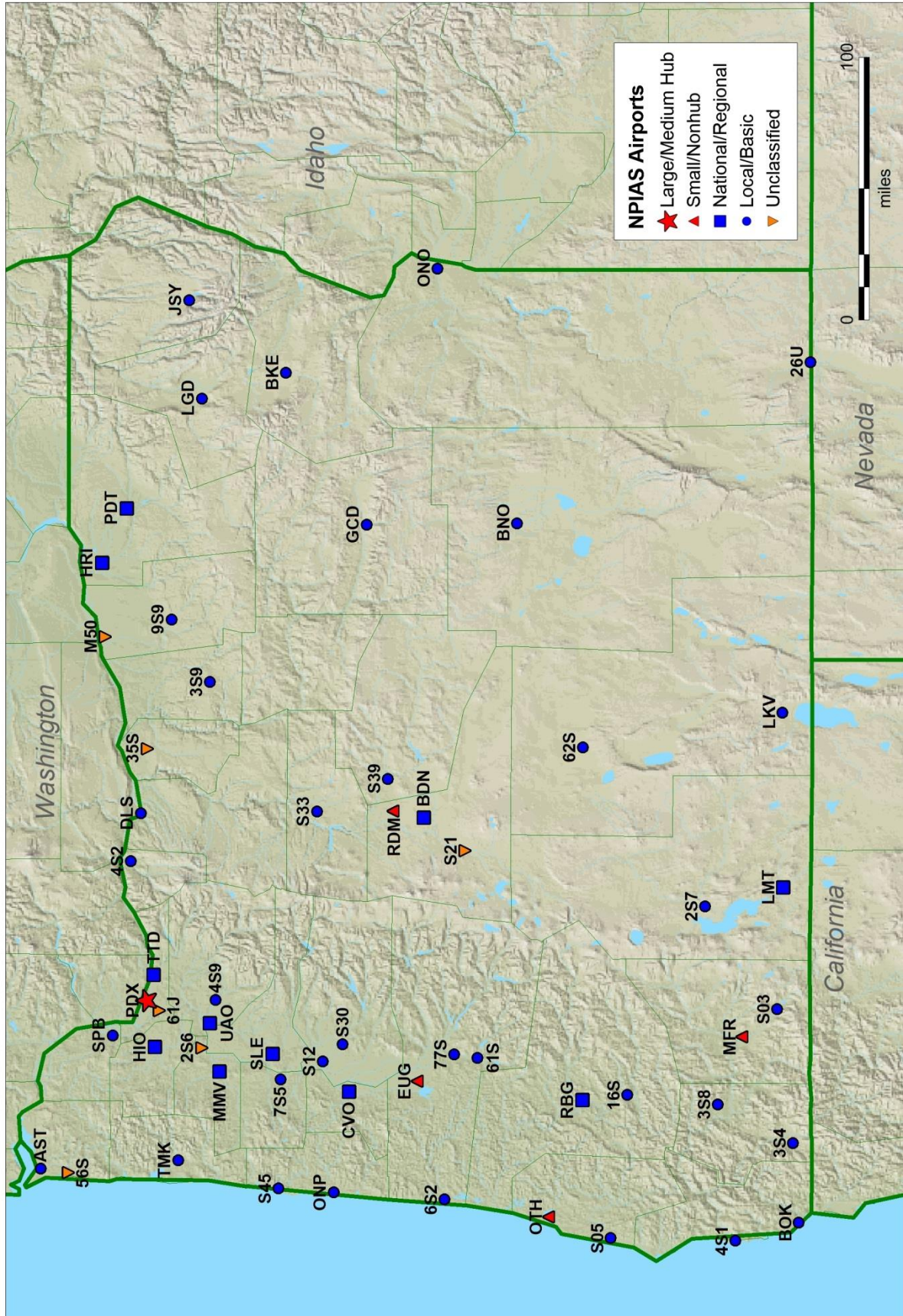


[illegible]

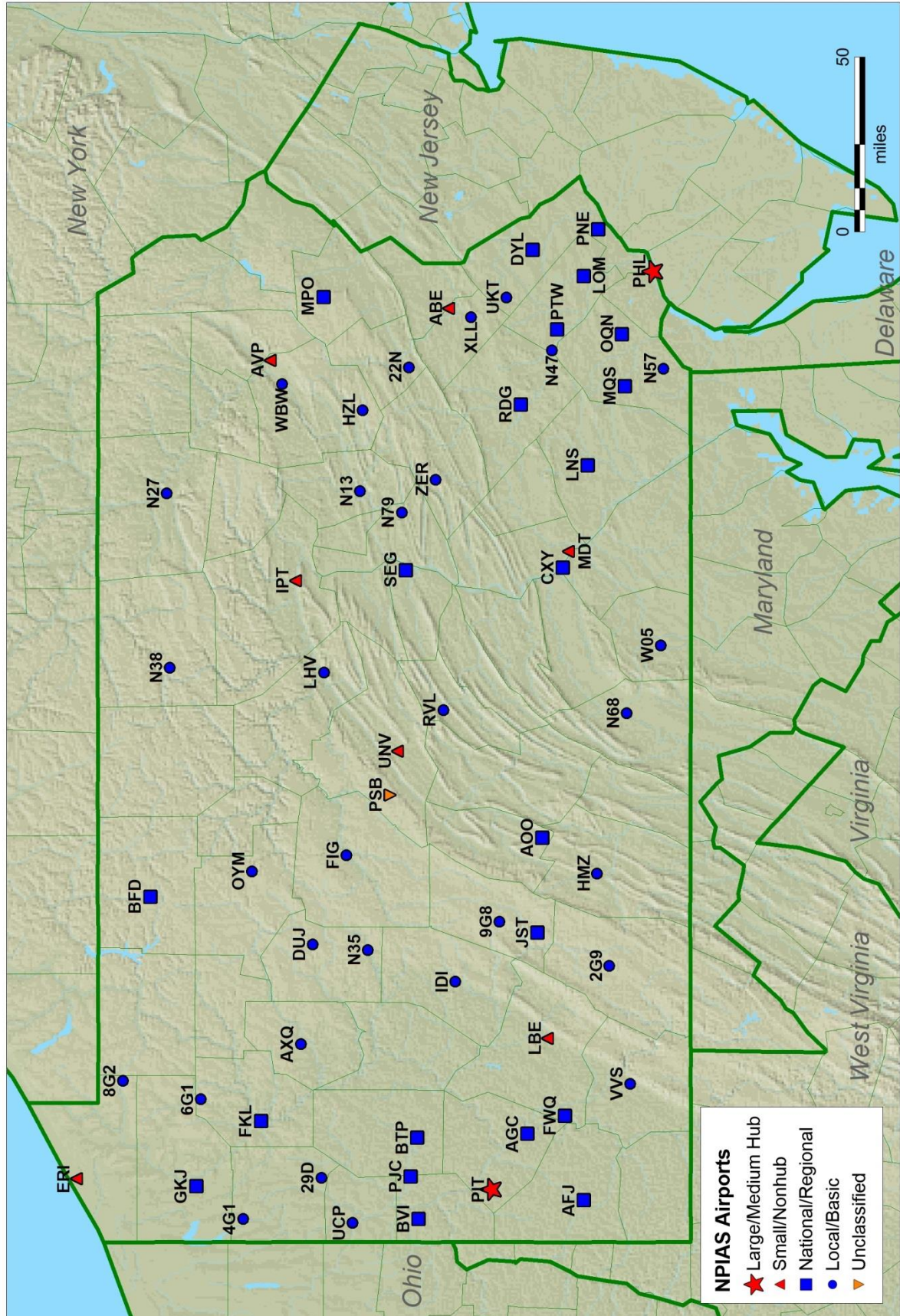


# Oregon

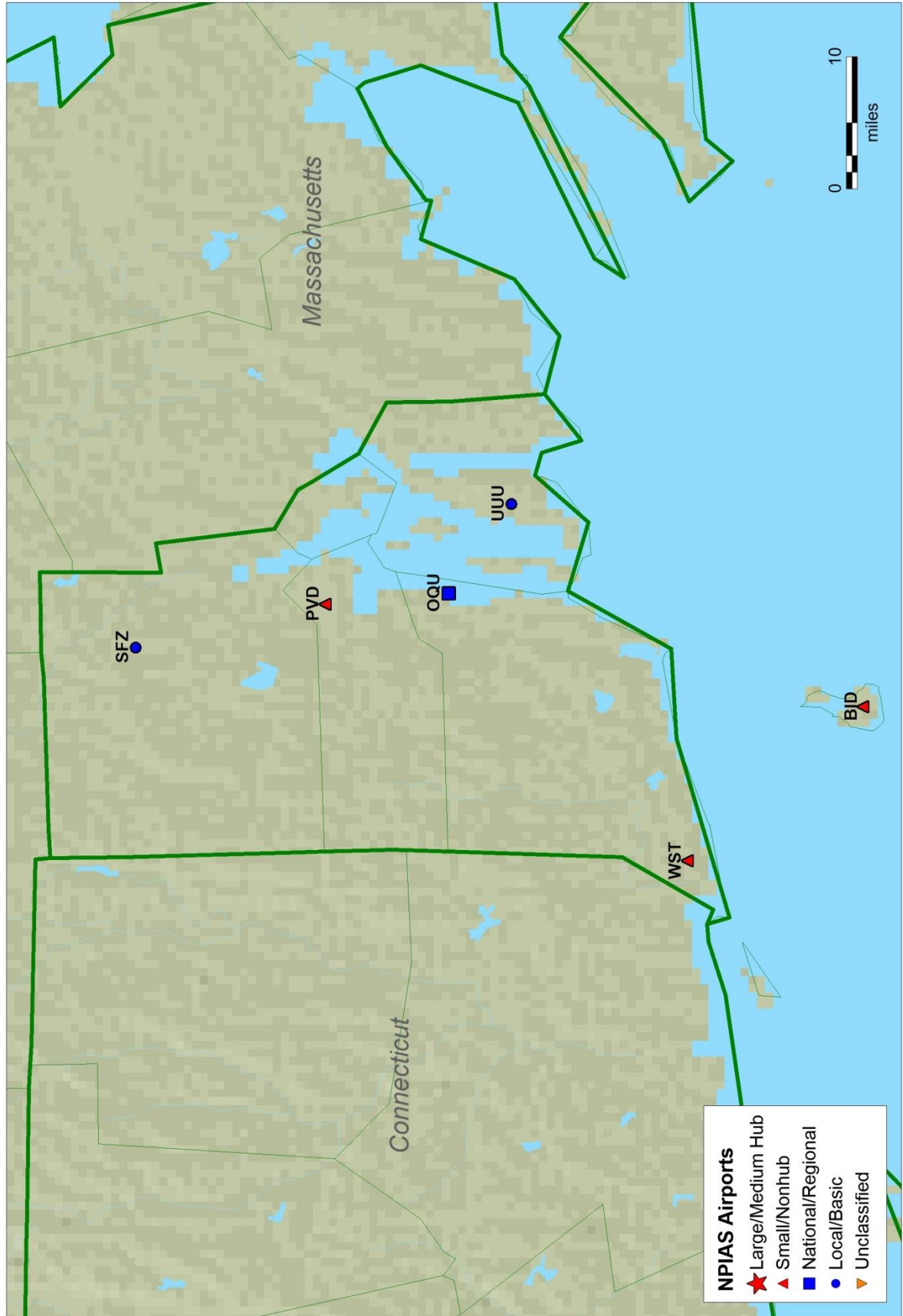




# Pennsylvania

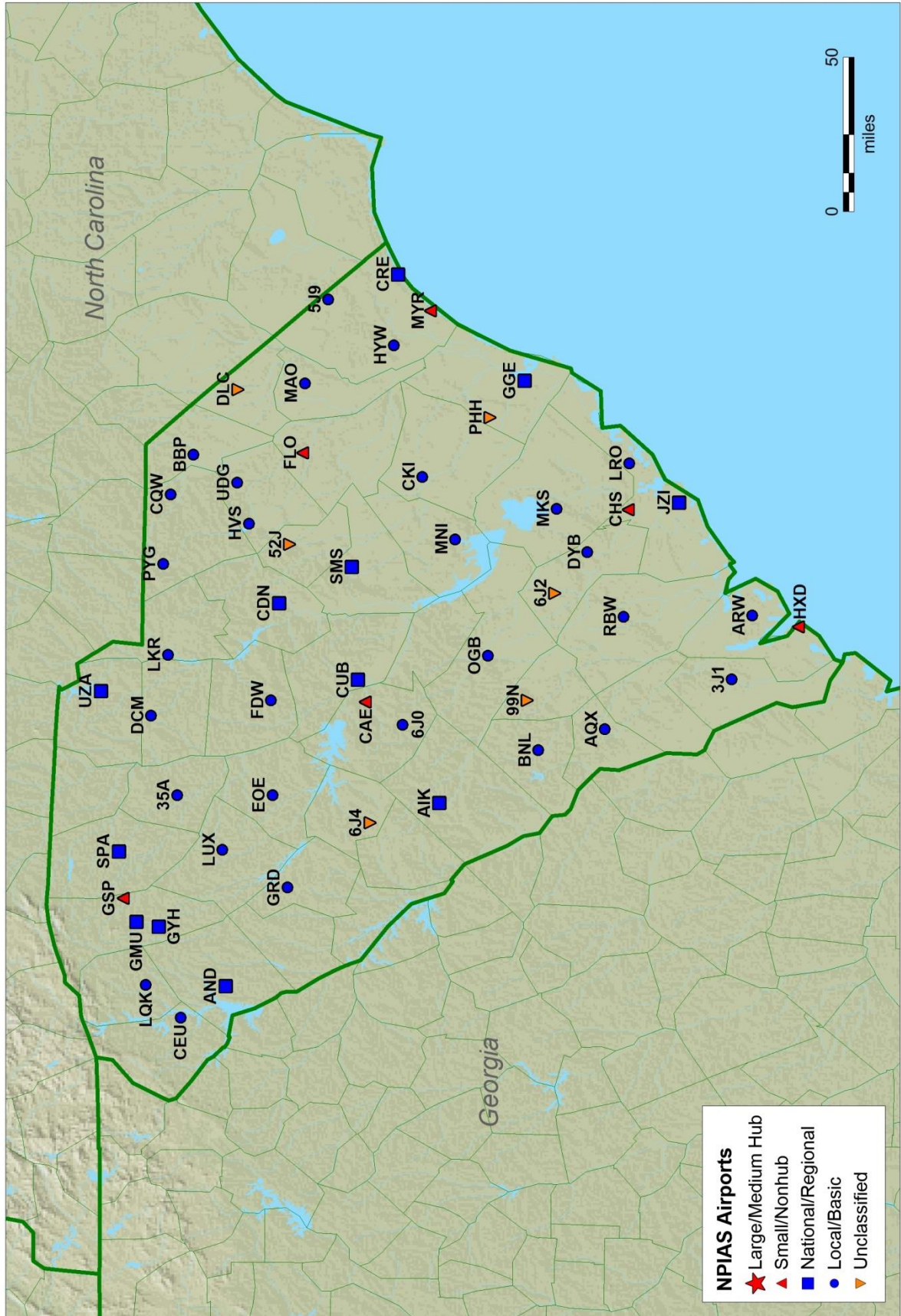


# Rhode Island



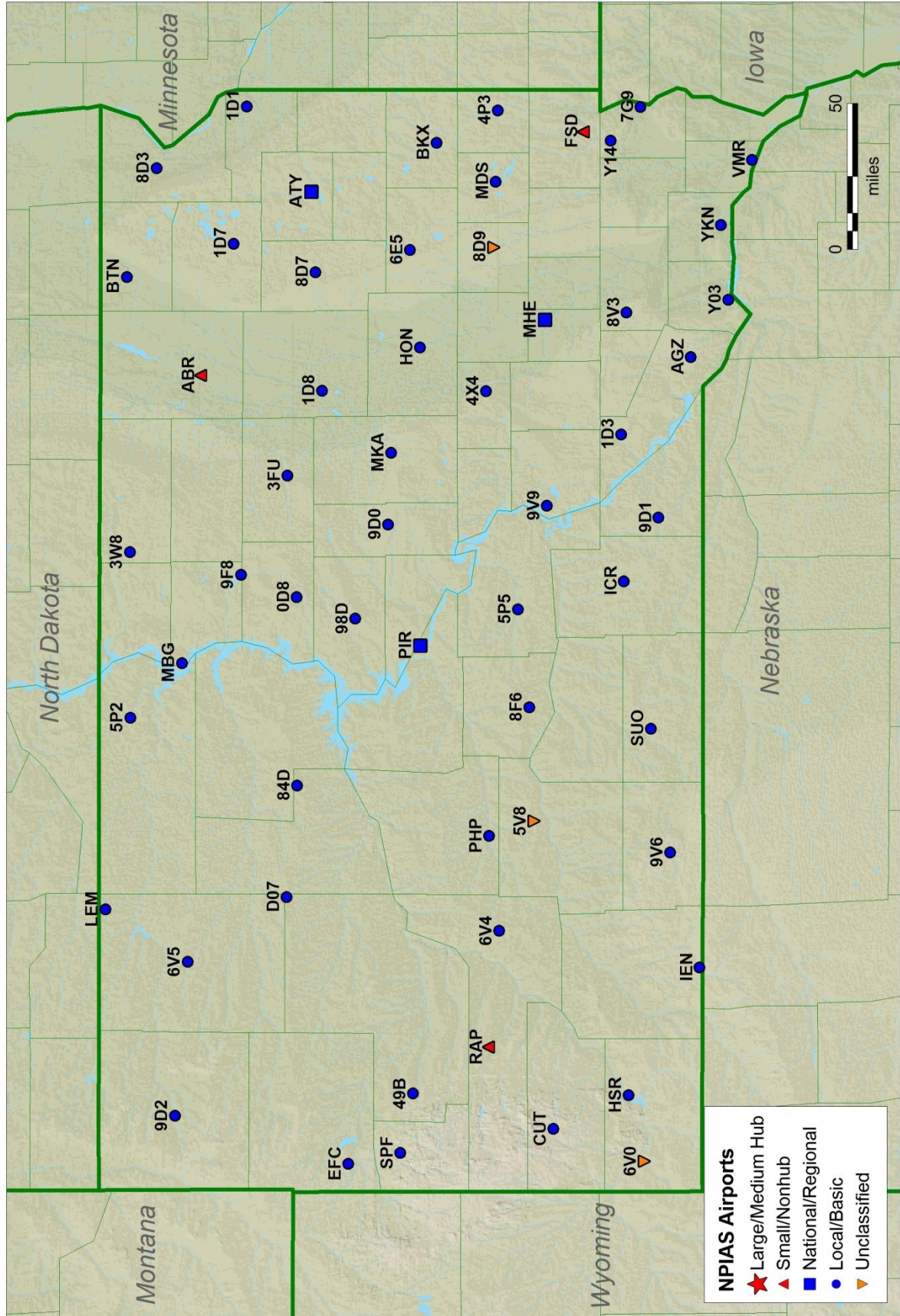


# South Carolina



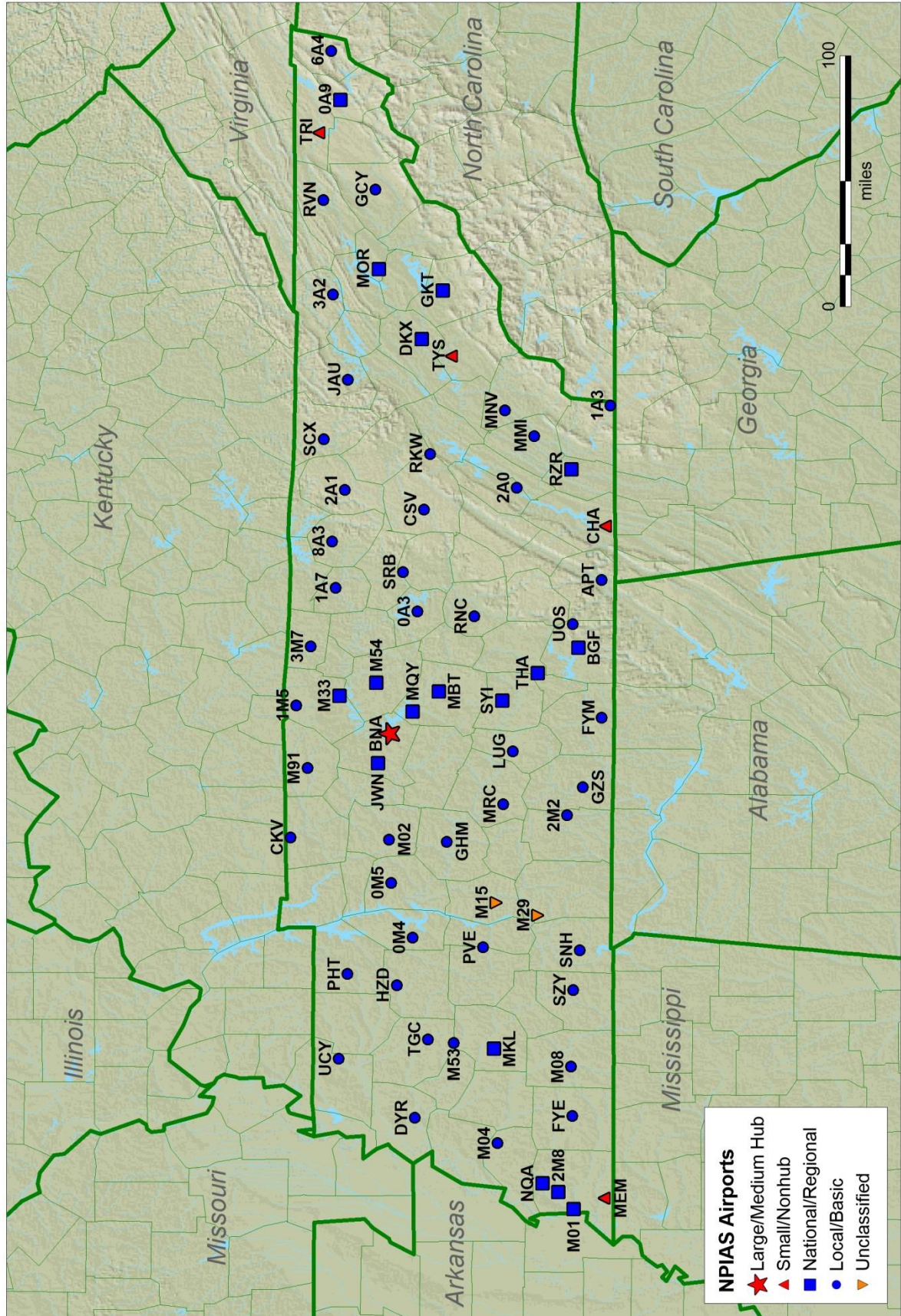


# South Dakota





# Tennessee





**NPIAS Airports**

- ★ Large/Medium Hub
- ▲ Small/Nonhub
- National/Regional
- Local/Basic
- ▼ Unclassified

0 100 miles

New Mexico

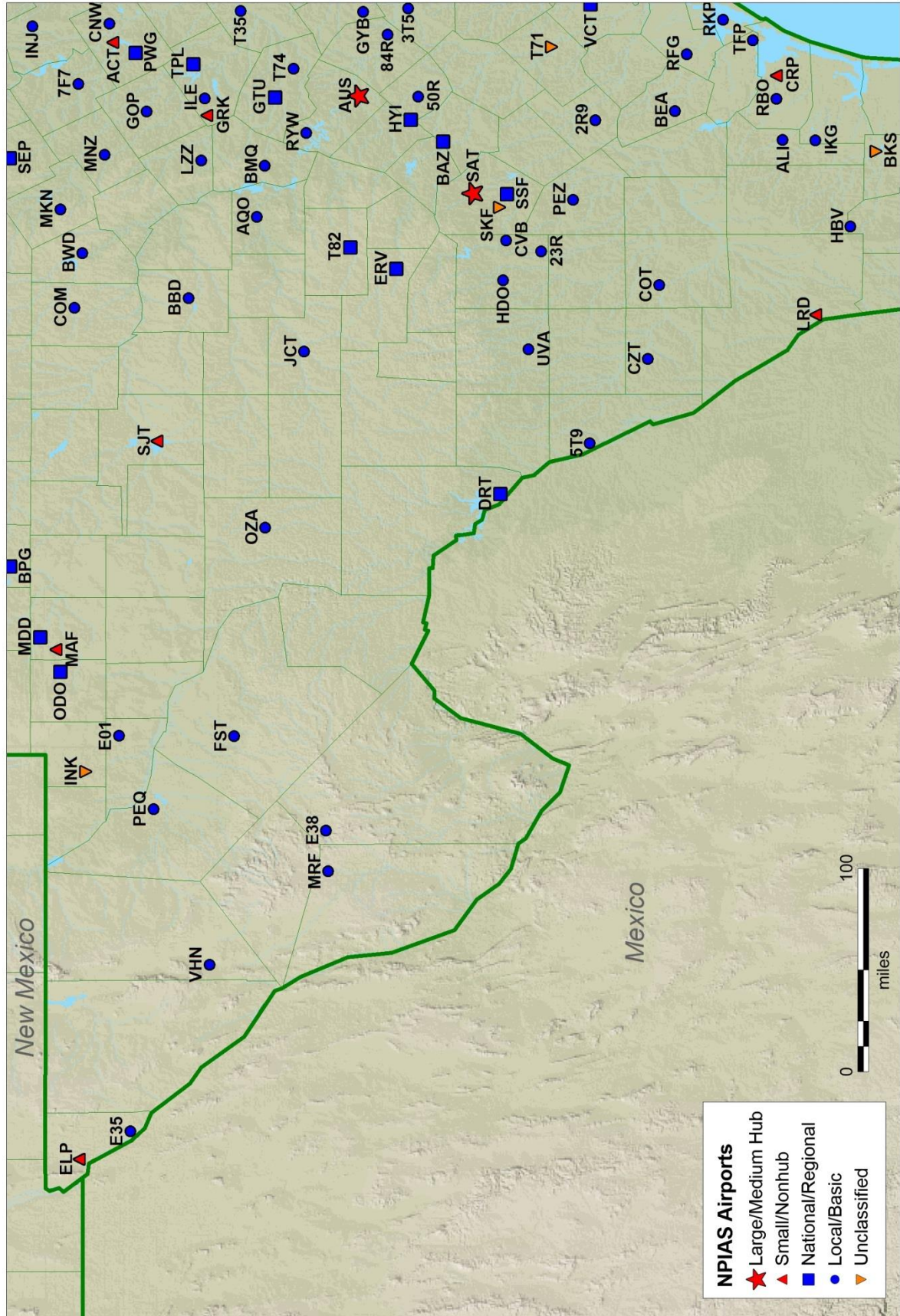
Oklahoma

Mexico

Map showing the distribution of NPIAS Airports across New Mexico, Oklahoma, and Mexico. The map includes a legend for airport types (Large/Medium Hub, Small/Nonhub, National/Regional, Local/Basic, Unclassified) and a scale bar (0 to 100 miles). The map is oriented with North at the top.



# Texas (Southwest)





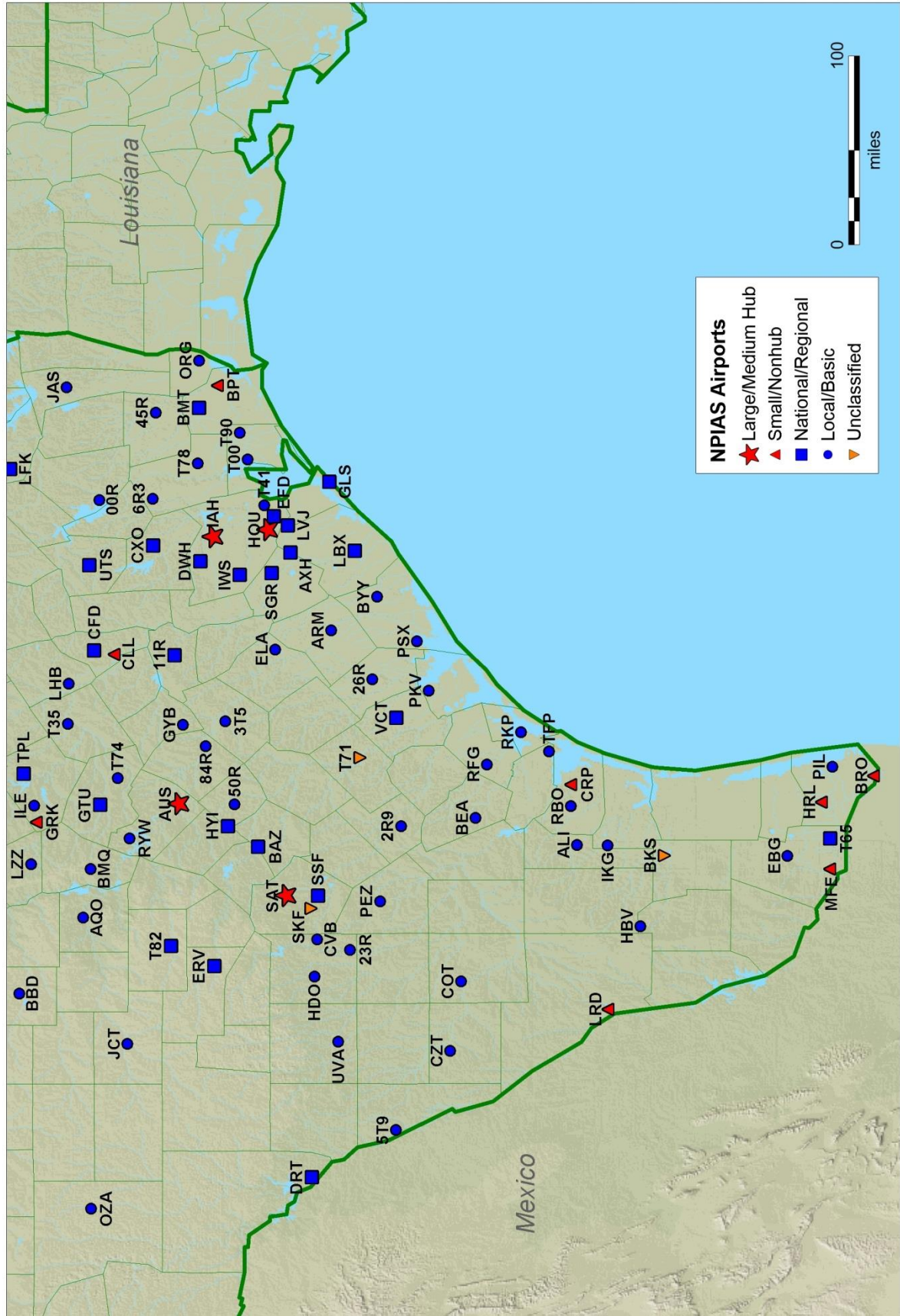
This map displays the locations of National Public Infrastructure Airport System (NPIAS) airports across the central United States, specifically covering Oklahoma, Arkansas, and Louisiana. The map uses a color-coded system to categorize airports by size and function, as detailed in the legend:

- Large/Medium Hub:** Red star symbol.
- Small/Nonhub:** Red triangle symbol.
- National/Regional:** Blue square symbol.
- Local/Basic:** Blue circle symbol.
- Unclassified:** Orange triangle symbol.

The map shows a high density of airports in the central region, with major hubs like Dallas (DFW) and Fort Worth (FTW) clearly marked. State boundaries are indicated by green lines, and major cities are labeled. A scale bar in the bottom right corner indicates distances in miles (0 to 100).



# Texas (Southeast)





# Utah

