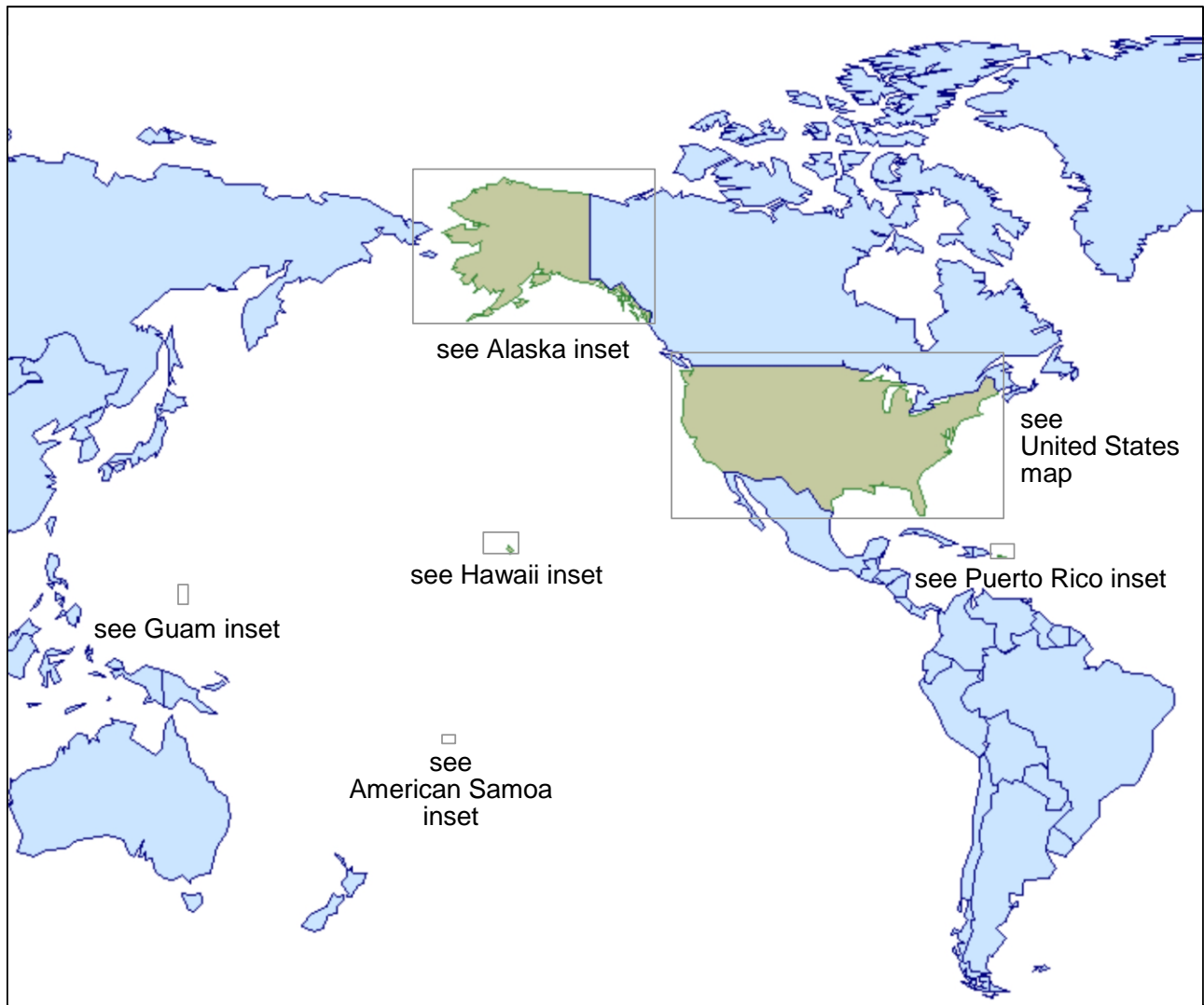


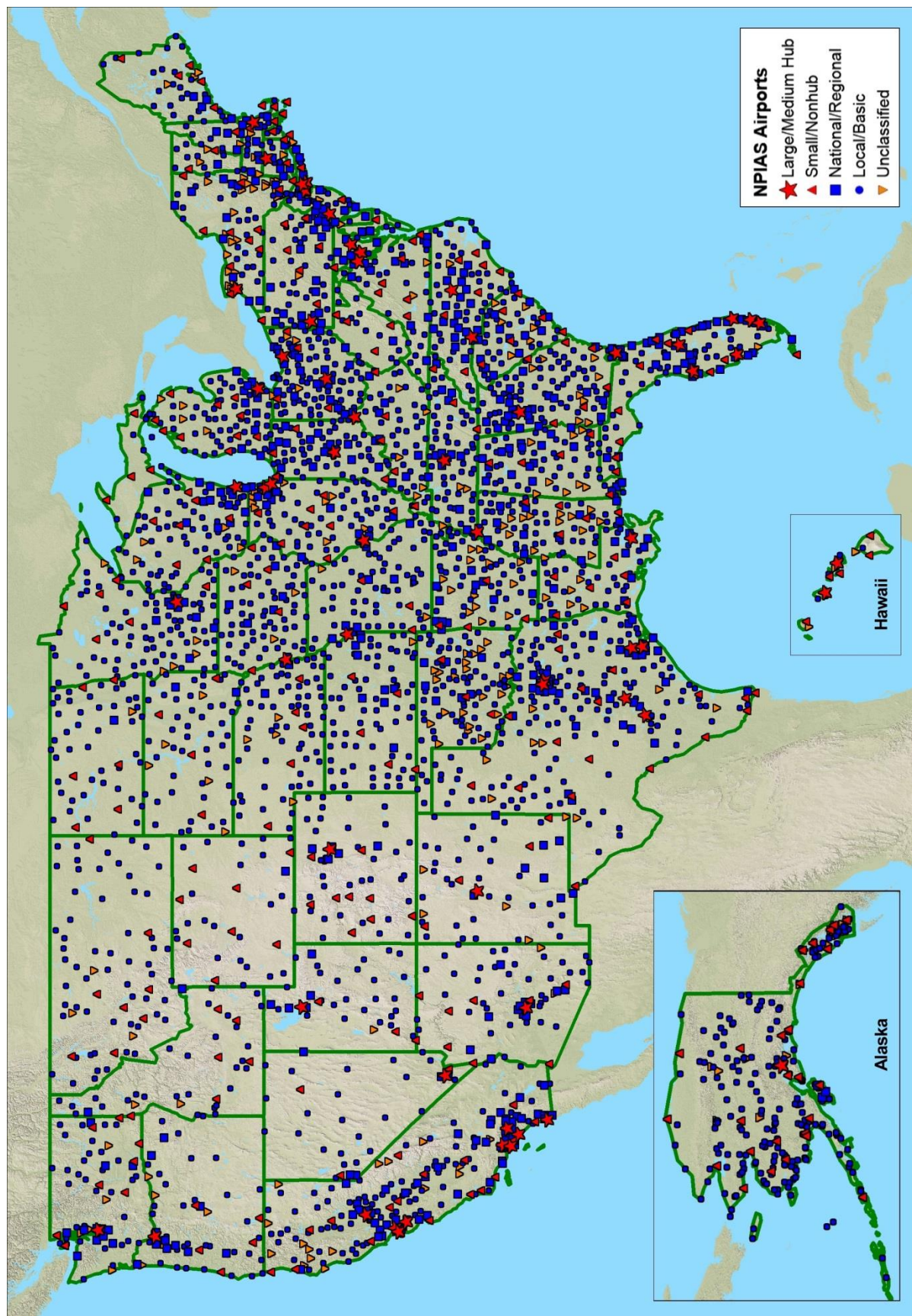
Appendix B: State Maps

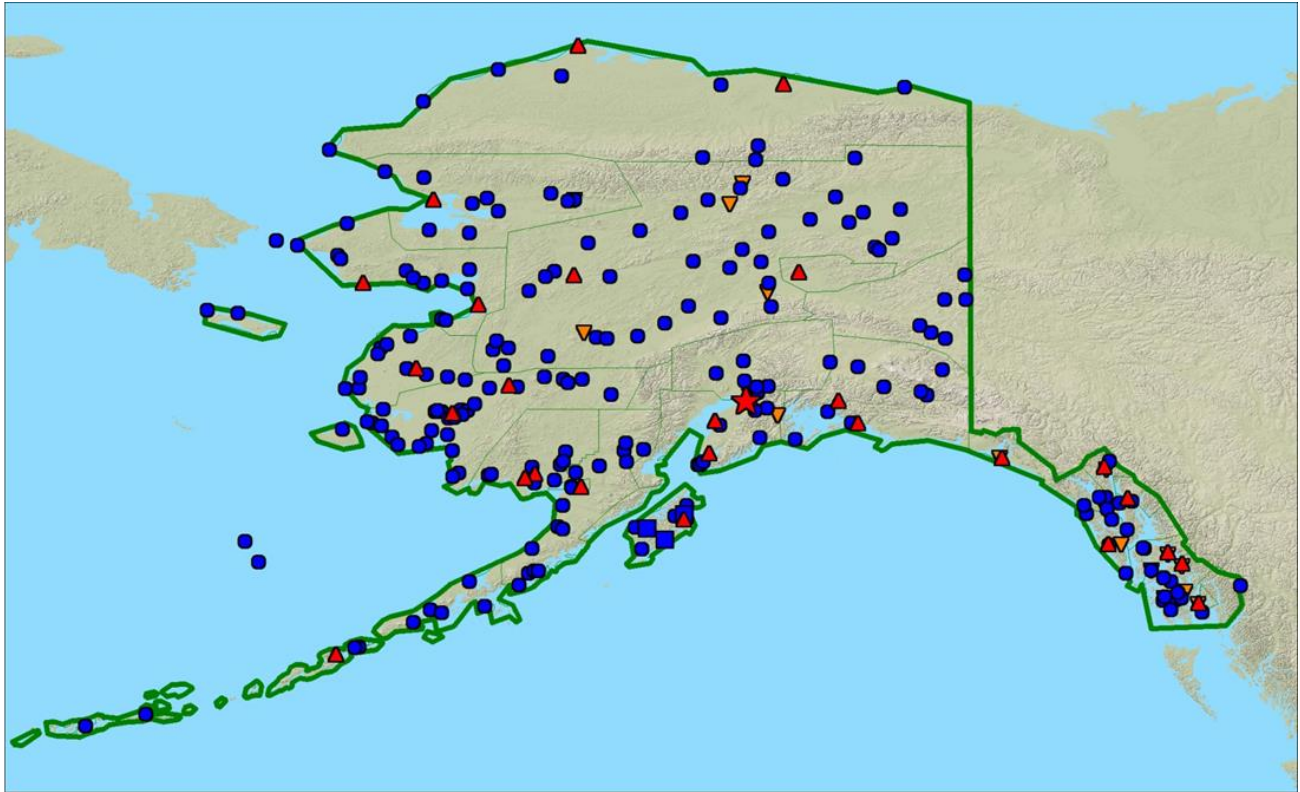
EXPLANATION OF MAPS IN APPENDIX B

The maps contained in Appendix B show the location of existing airports contained in the NPIAS. Airports are identified by the airport name. Icons are used to identify the airports as Large/Medium Hub, Small/Nonhub, National/Regional, Local/Basic, and Unclassified.

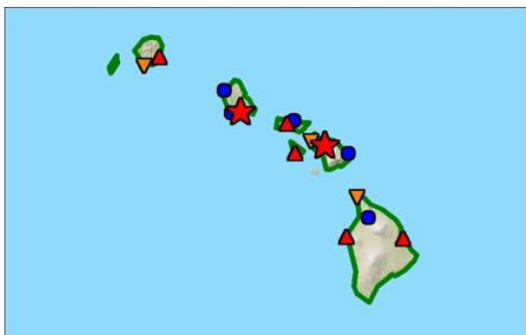
Maps of all 3,331 NPIAS airports, as delineated below, are shown on the following pages.



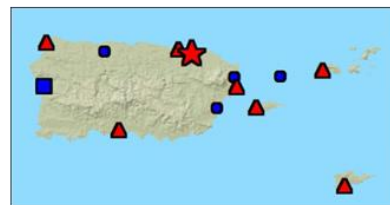




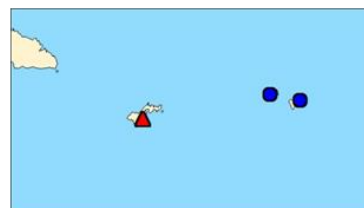
Alaska



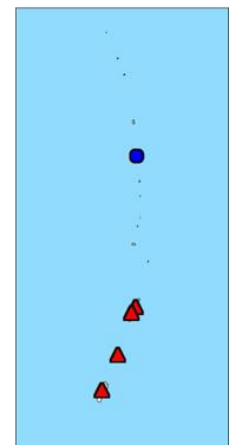
Hawaii



Puerto Rico and
the Virgin Islands



American Samoa



Guam and
Northern
Marianas
Islands

NPIAS Airports

- ★ Large/Medium Hub
- ▲ Small/Nonhub
- National/Regional
- Local/Basic
- ▼ Unclassified

Maps are not to scale.

This map displays the Southeastern United States, including parts of Tennessee, Mississippi, Georgia, South Carolina, and Florida. It highlights National Public Infrastructure Airport System (NPIAS) airports, categorized by size and type. The legend indicates five categories: Large/Medium Hub (red star), Small/Nonhub (red triangle), National/Regional (blue square), Local/Basic (blue circle), and Unclassified (orange triangle). Major airports are labeled with their IATA codes, such as MSL, MDQ, DCU, HSV, 4A6, 4A9, 8A1, 8A0, PYP, GAD, 20A, BHM, PLR, ANB, ASN, 26A, 7A5, 7A3, AUO, 06A, 07A, 1A9, 02A, 0A8, EET, 08A, 08A, 11A, 0J0, 0J6, 14J, 71J, EDN, DHN, 33J, 0J4, 79J, 12J, 0R1, 1R8, 4R9, 5R4, JKA, 4R3, 3A0, 61A, PRN, TOI, EUF, 09A, 7A0, A08, DYA, 09A, 3M8, TCL, AIV, M95, JFX, CMD, 5M0, 9A4, 1M4, HAB, MSL, and 4A6. The map also shows state boundaries, major cities, and a scale bar in miles (0, 60, 120).

NPIAS Airports

- ★ Large/Medium Hub
- ▲ Small/Nonhub
- National/Regional
- Local/Basic
- ▲ Unclassified

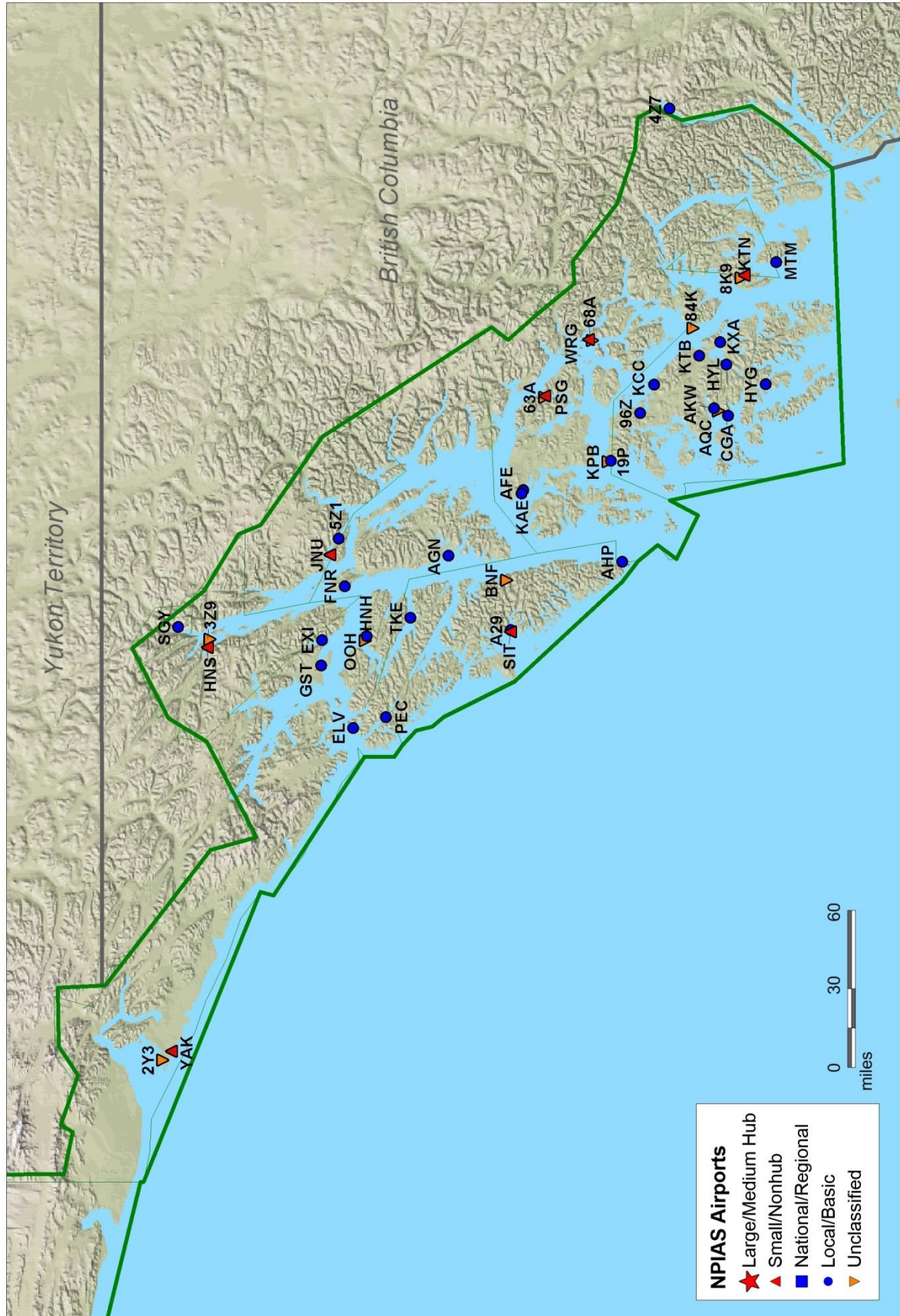
Scale: 0 to 120 miles

NPIAS Airports

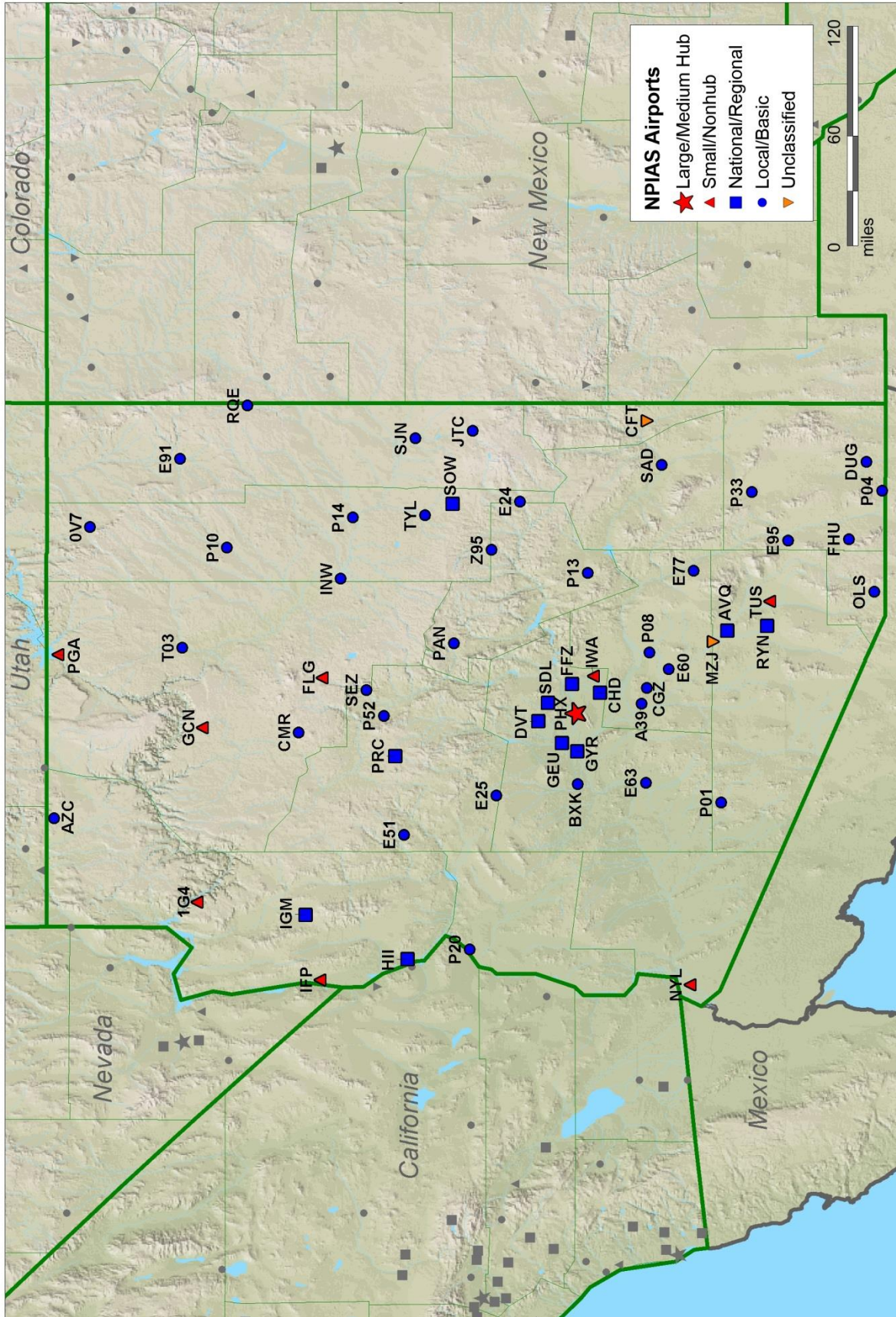
- Large/Medium Hub
- Small/Nonhub
- National/Regional
- Local/Basic
- Unclassified

0 60 120 miles

Alaska (Southeast)

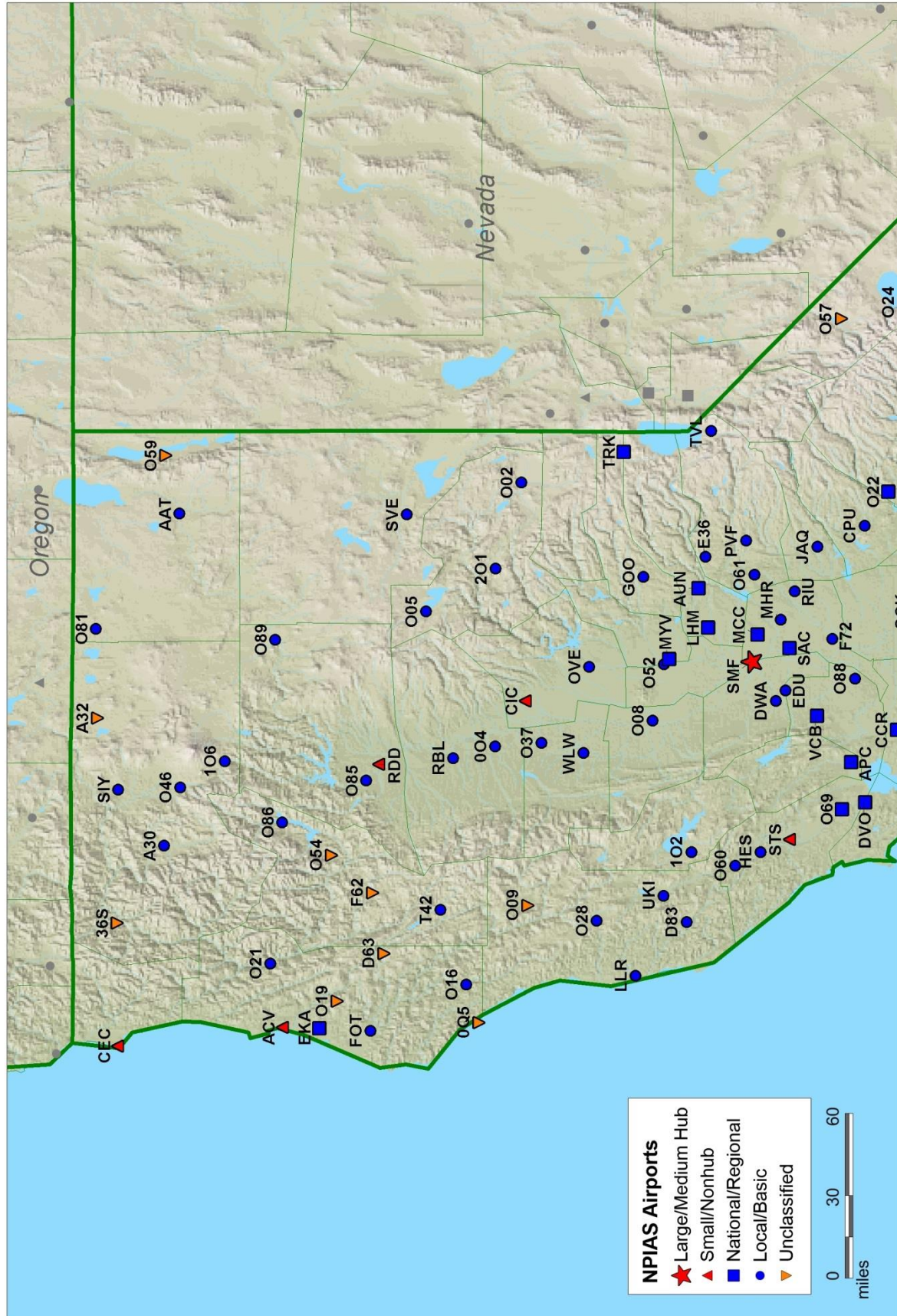


Arizona



This map displays the locations of National Public Infrastructure Airport System (NPIAS) airports across the central United States, specifically covering parts of Missouri, Arkansas, Louisiana, Texas, Oklahoma, Kentucky, Tennessee, and Mississippi. The map uses a color-coded system to categorize airports based on their size and service type. A legend in the top right corner defines the symbols: a red star for Large/Medium Hub, a red triangle for Small/Nonhub, a blue square for National/Regional, a blue circle for Local/Basic, and an orange triangle for Unclassified. The map also includes state boundaries, major cities, and a scale bar indicating distances in miles (0, 30, 60). Numerous airports are labeled with their IATA codes, such as MKE, ORD, SFO, and LAX.

California (North)



NPIAS Airports

- ★ Large/Medium Hub
- ▲ Small/Nonhub
- National/Regional
- Local/Basic
- ▼ Unclassified

0 30 60 miles

California (South)

