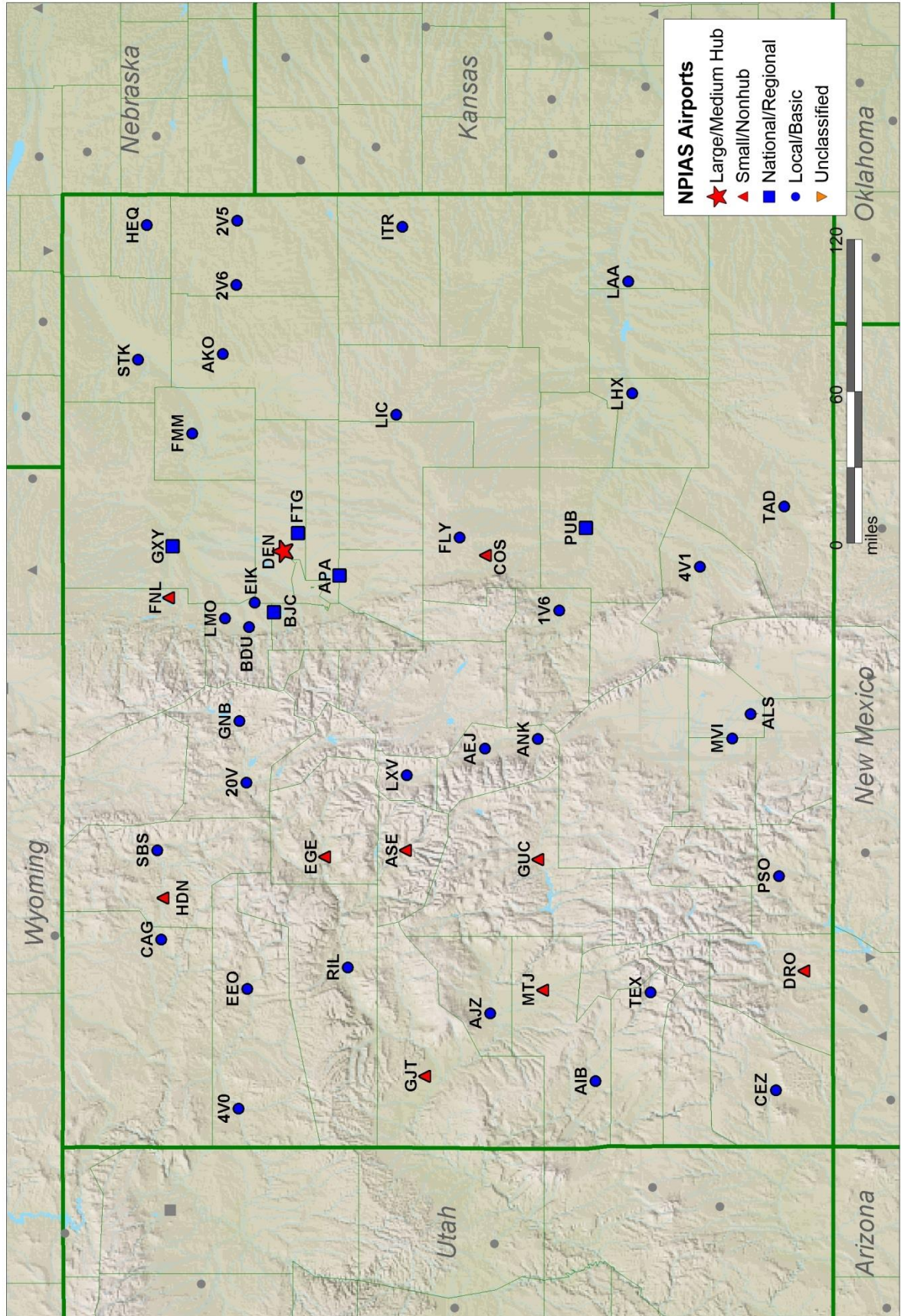
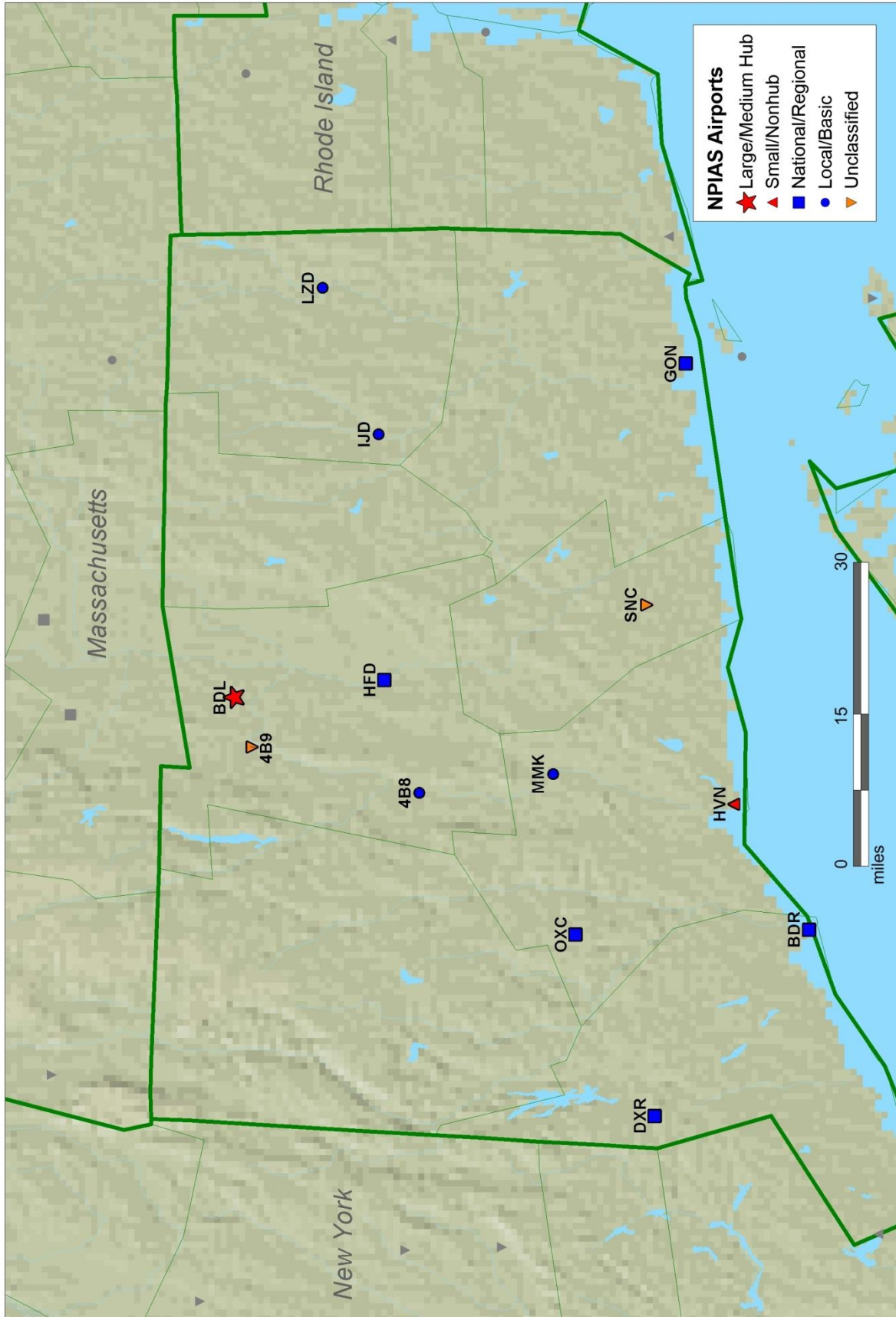


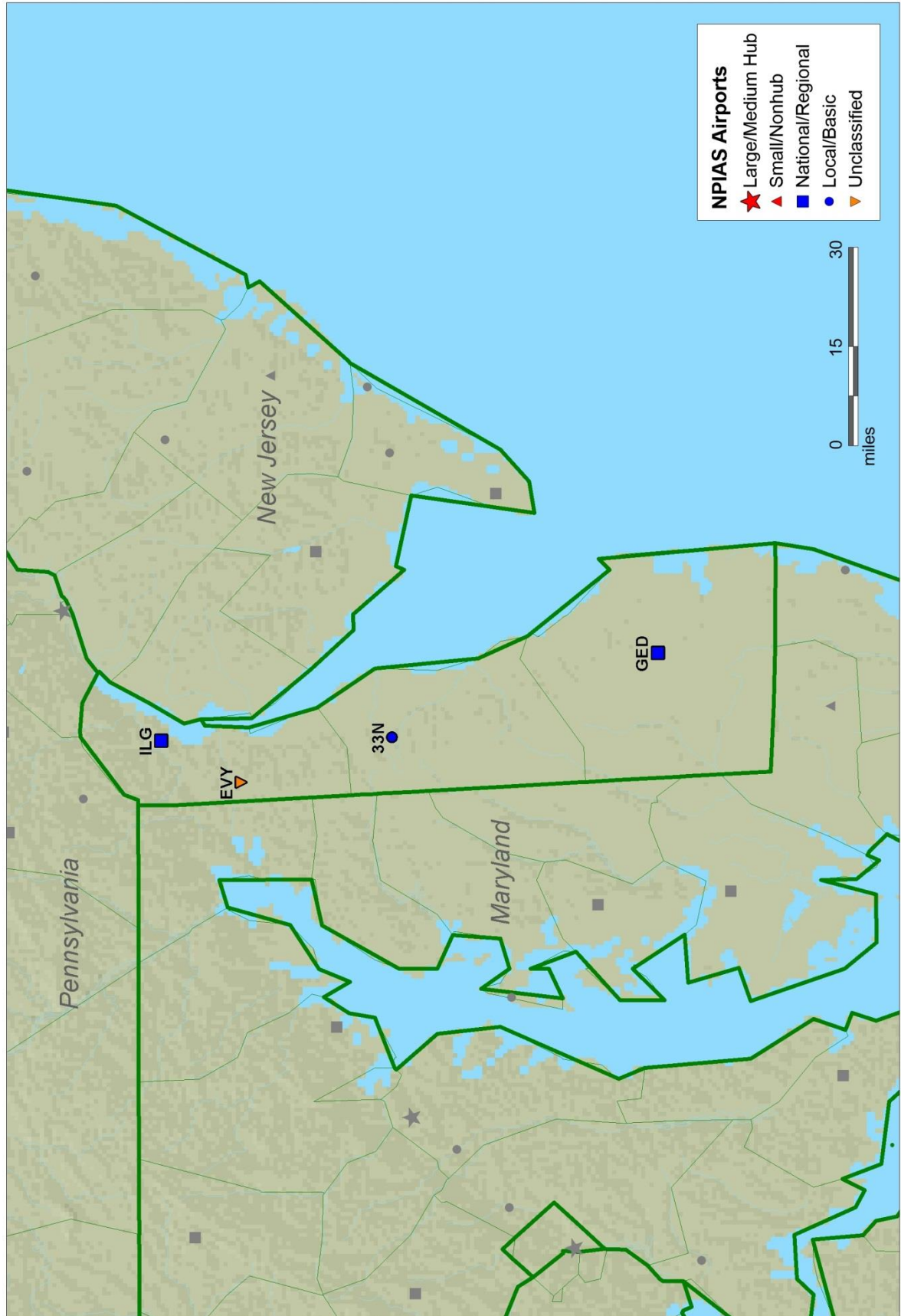
Colorado



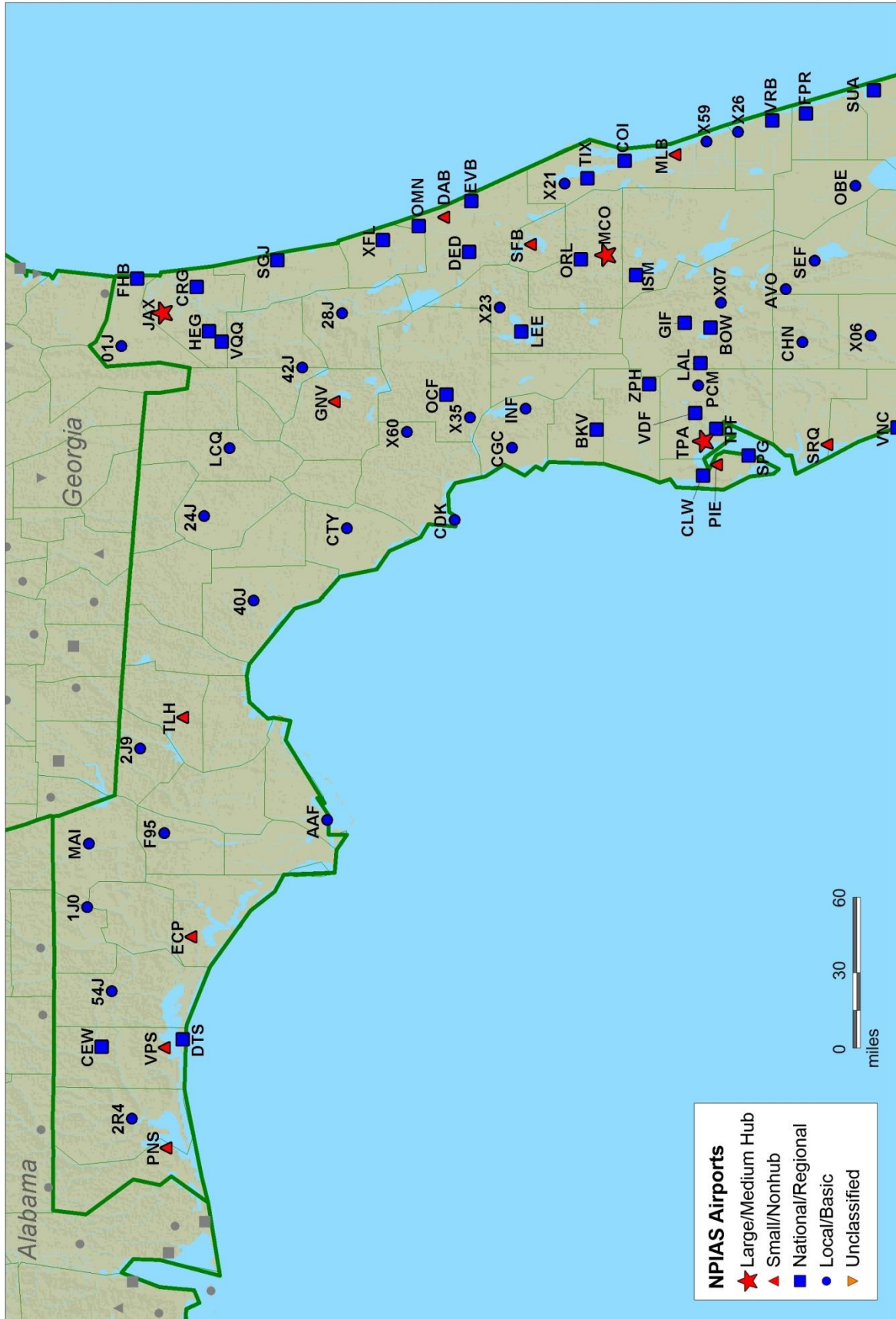
Connecticut



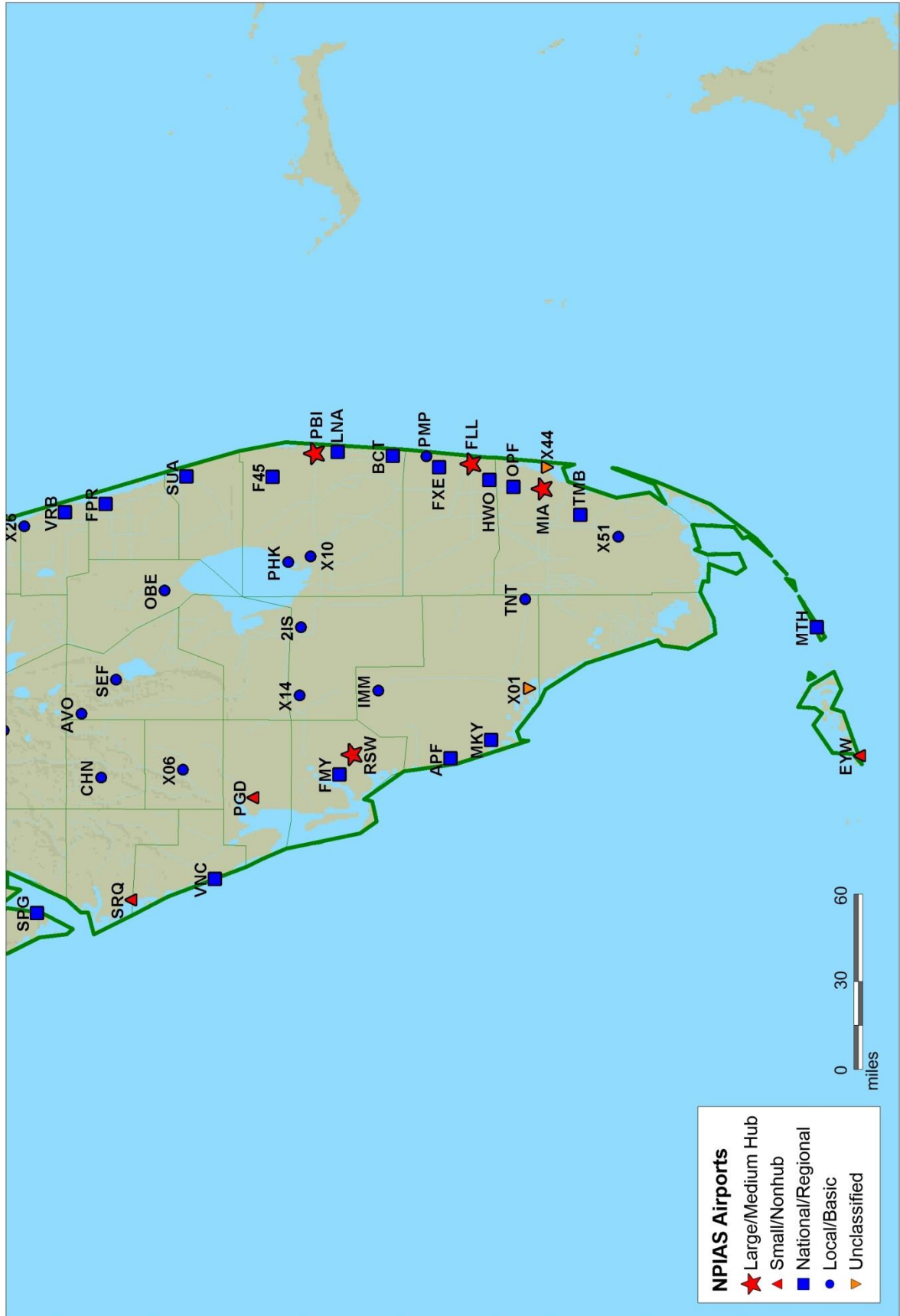
Delaware



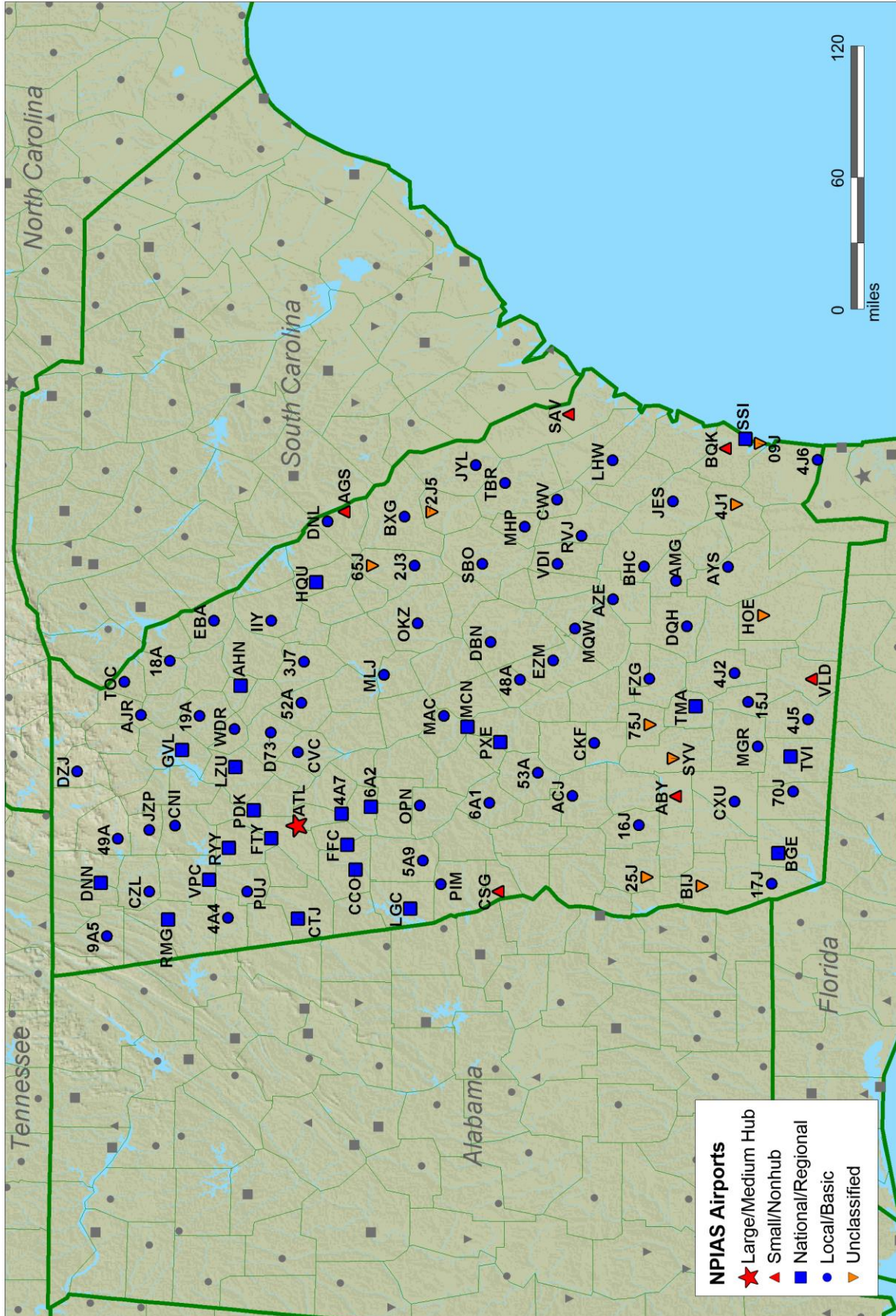
Florida (North)



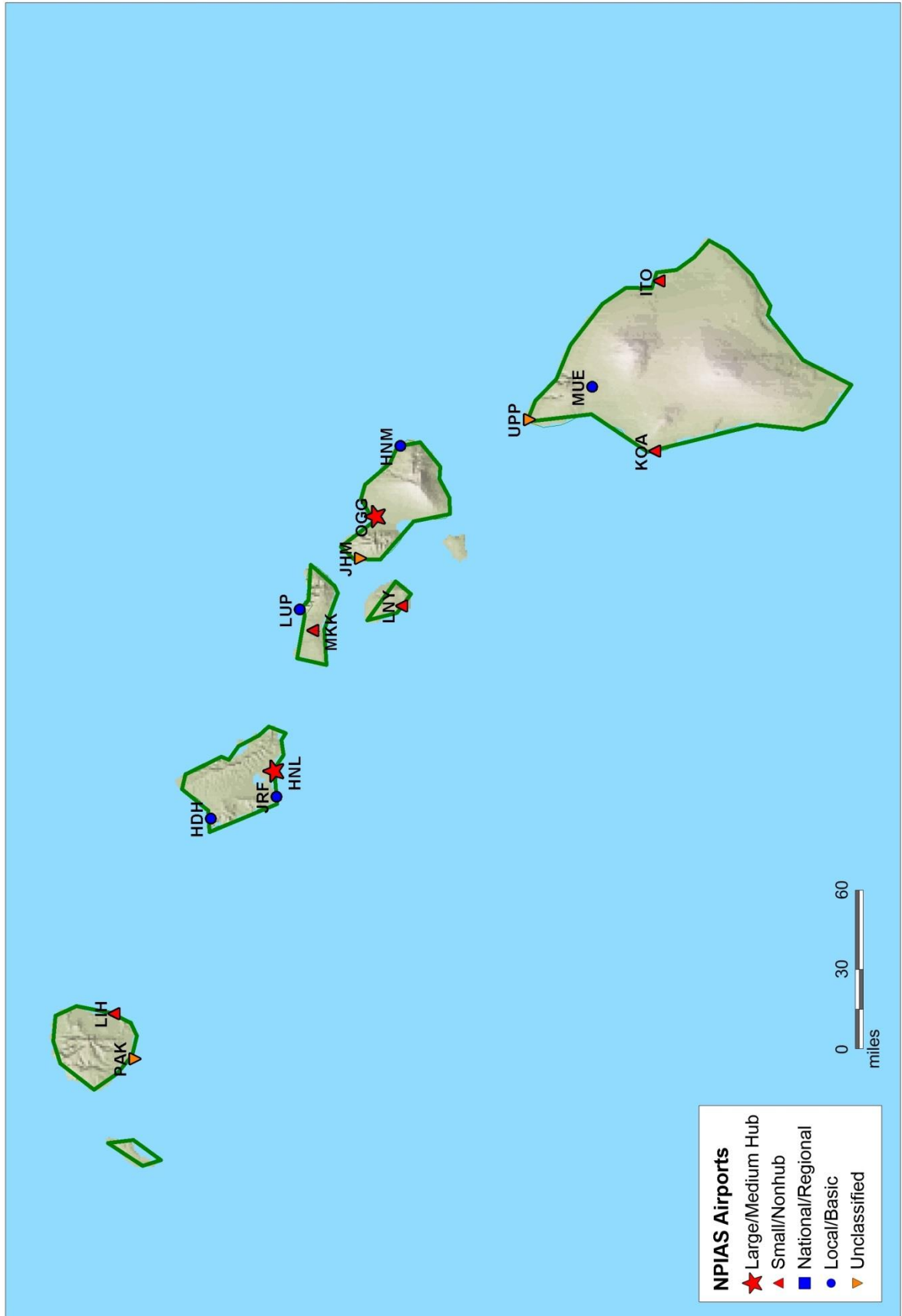
Florida (South)



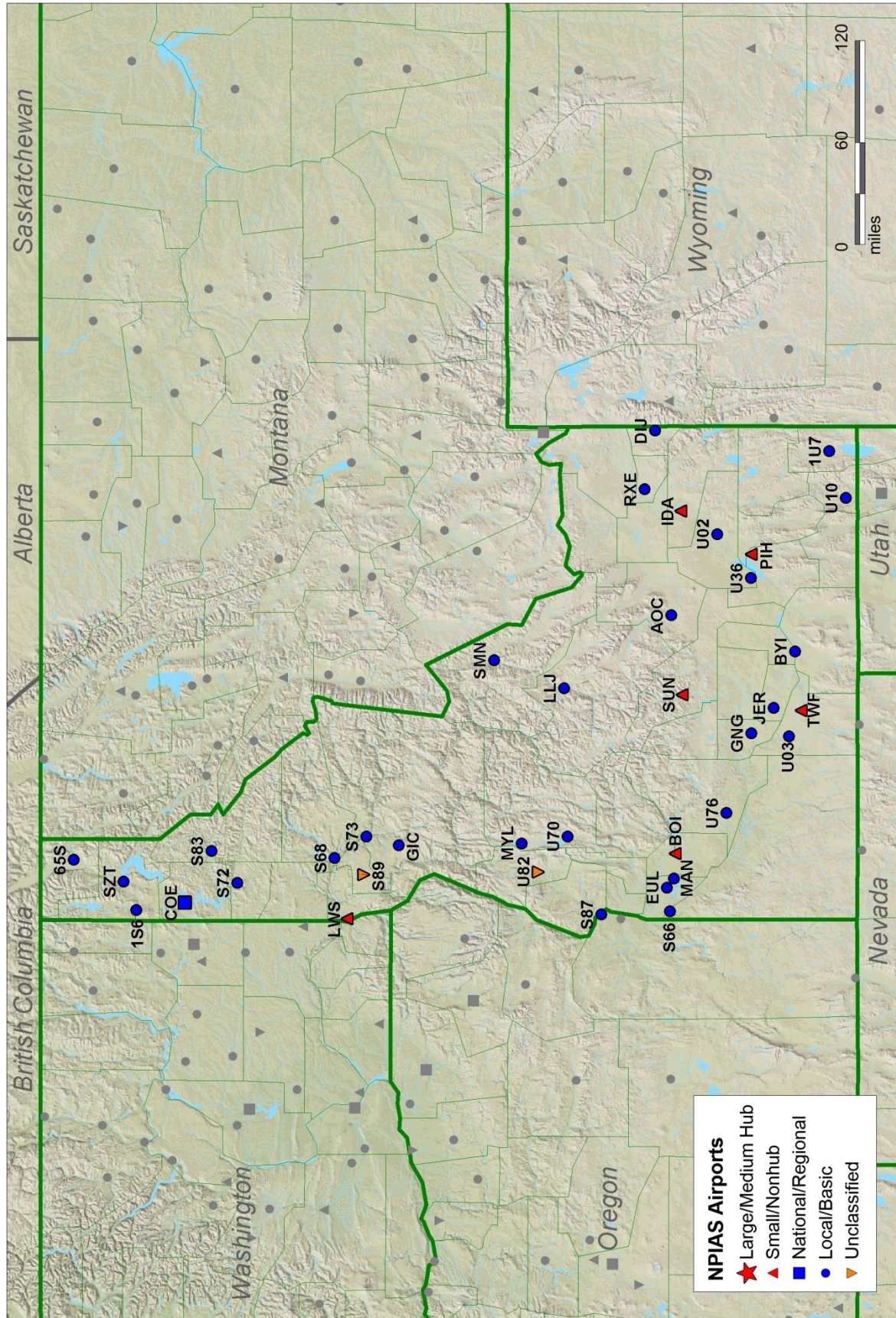
Georgia



Hawaii



Idaho

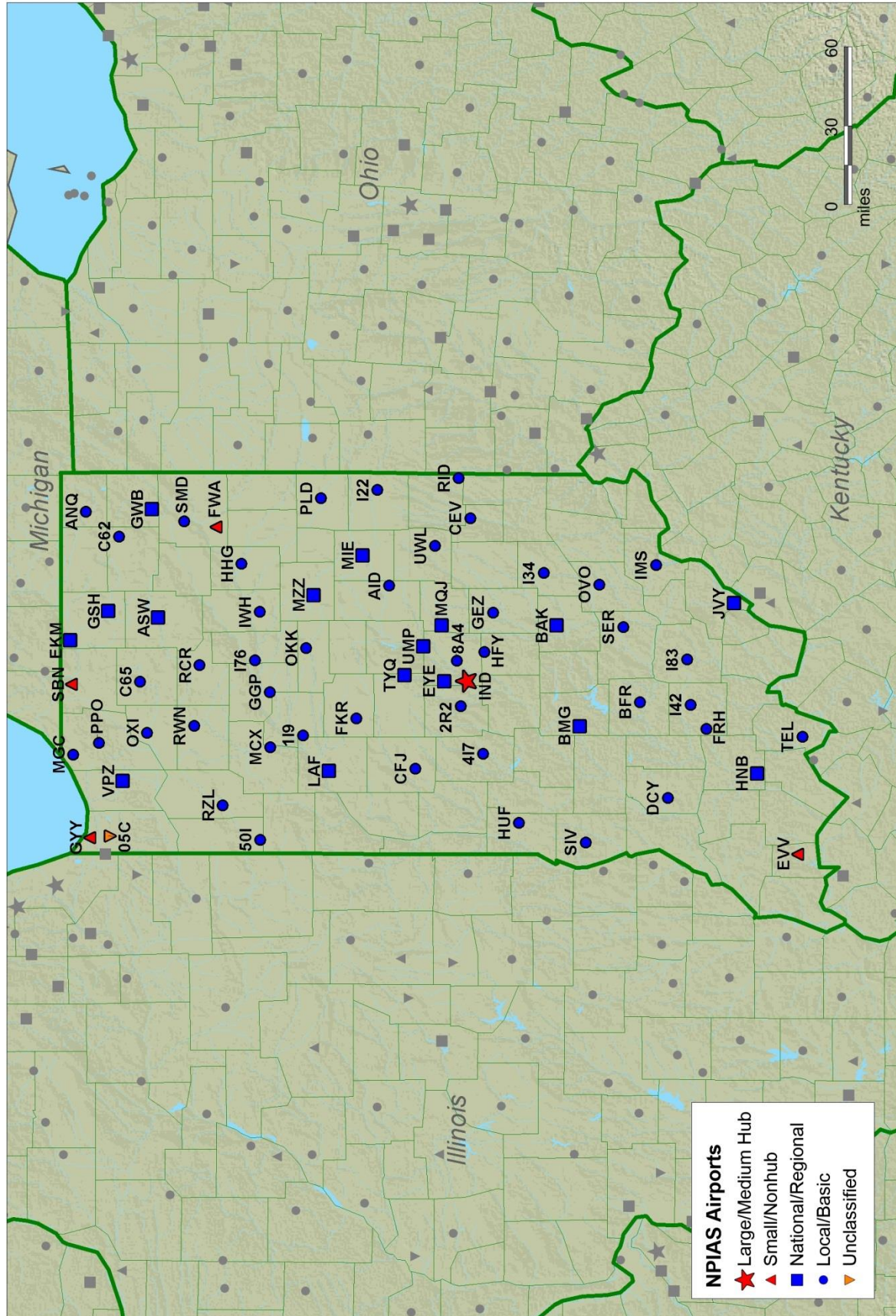


This map displays the National Public Infrastructure Airport System (NPIAS) in the Midwestern United States, covering parts of Wisconsin, Illinois, Indiana, Michigan, Ohio, Kentucky, Missouri, and Iowa. The map uses a color-coded system to categorize airports based on their size and function. A legend in the bottom right corner defines the categories:

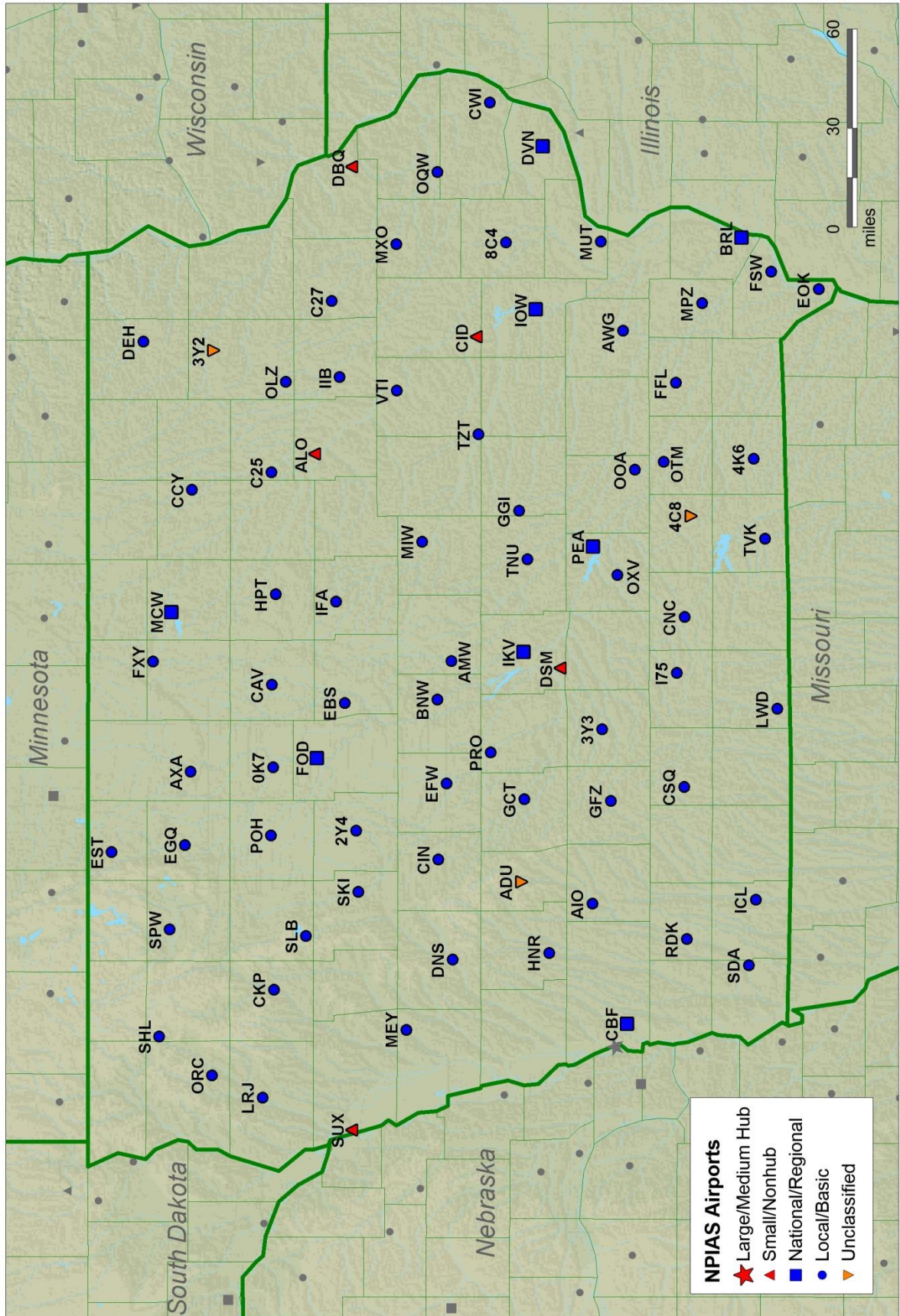
- Large/Medium Hub:** Red star
- Small/Nonhub:** Red triangle
- National/Regional:** Blue square
- Local/Basic:** Blue circle
- Unclassified:** Orange triangle

The map shows a high density of airports, particularly in the Chicago area (IL) and around major hubs like Indianapolis (IN) and Detroit (MI). State boundaries are marked with green lines, and major water bodies like Lake Michigan and Lake Superior are shown in blue. A scale bar in the bottom right indicates distances in miles (0, 60, 120).

Indiana



Iowa



Kansas

