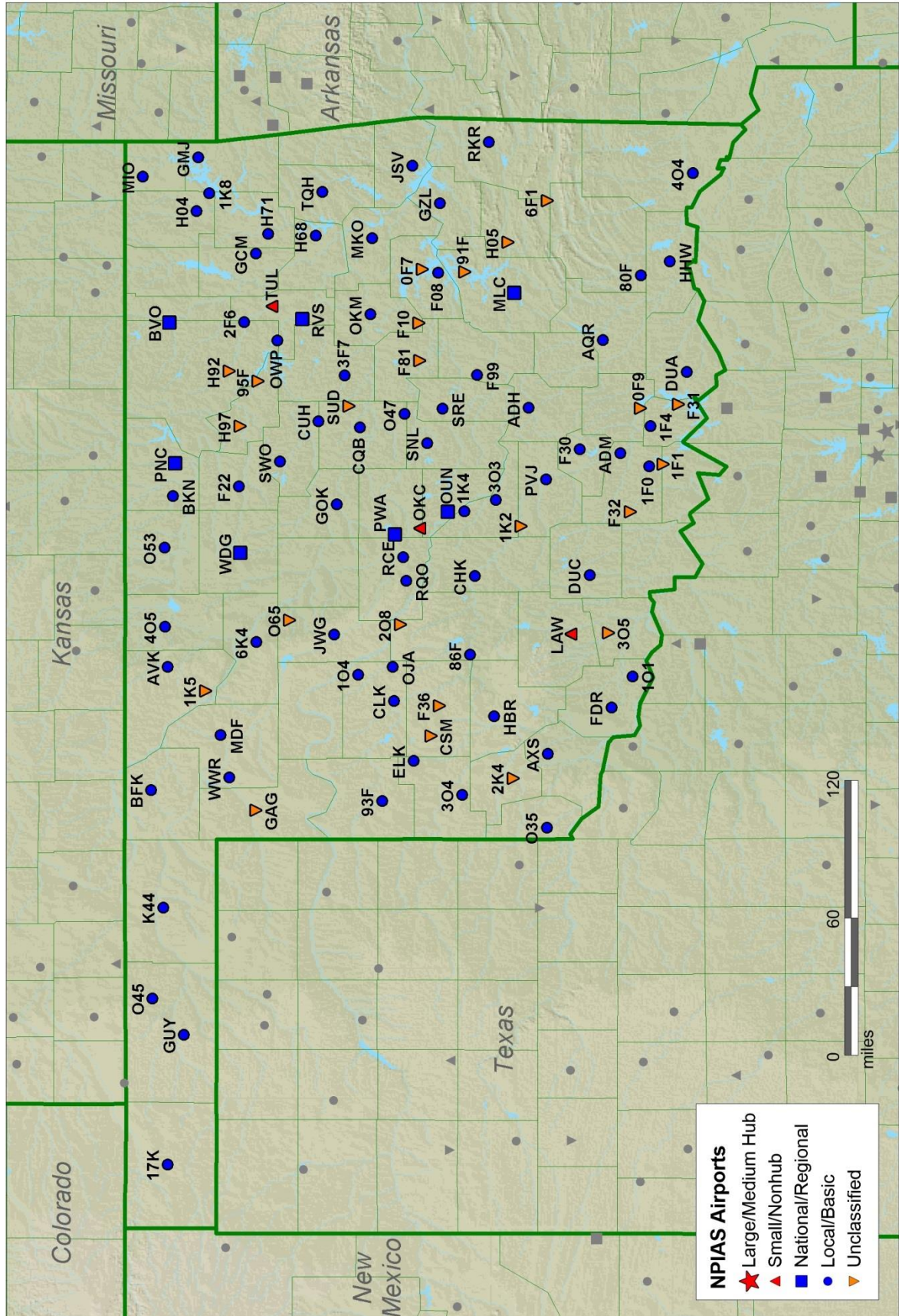
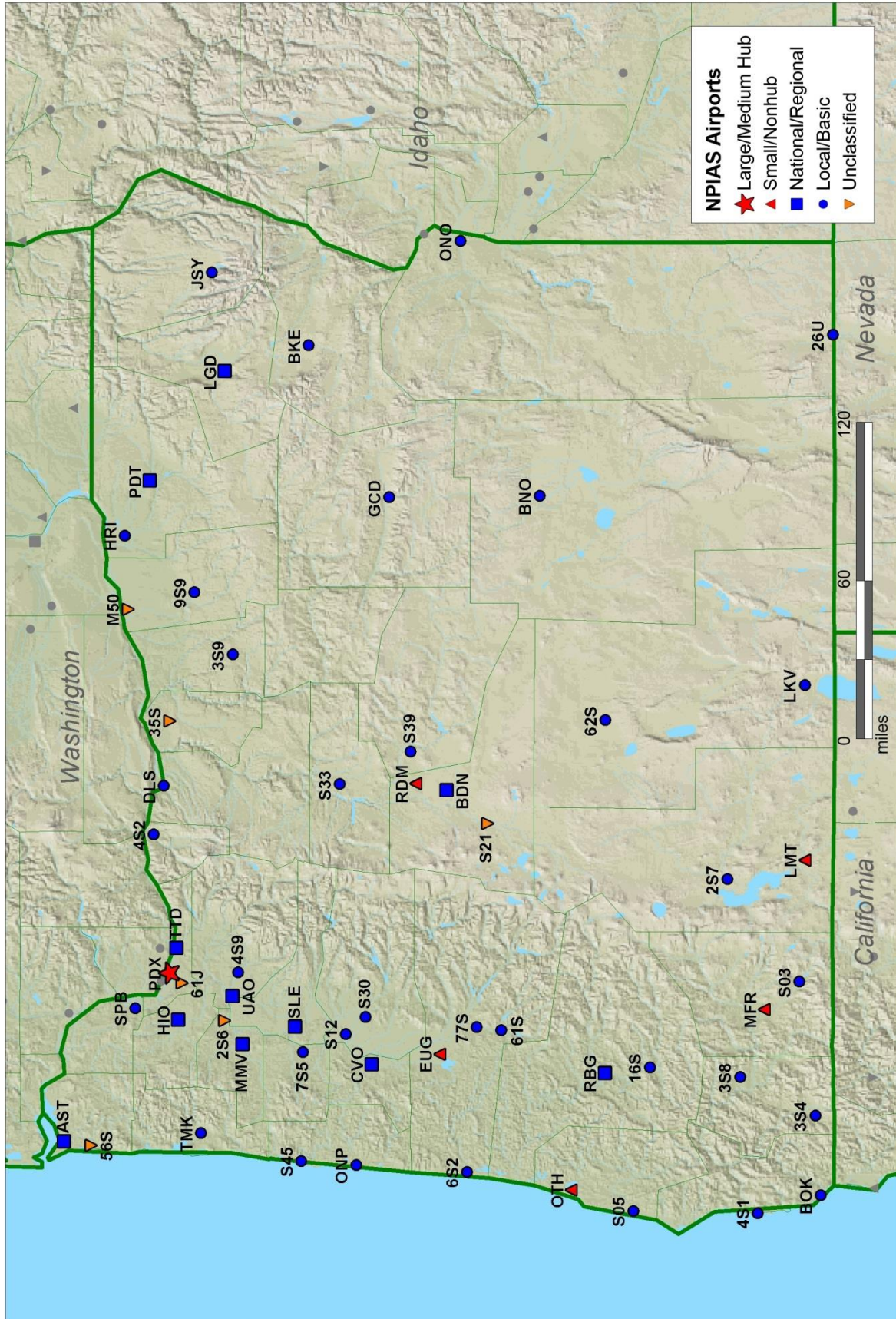


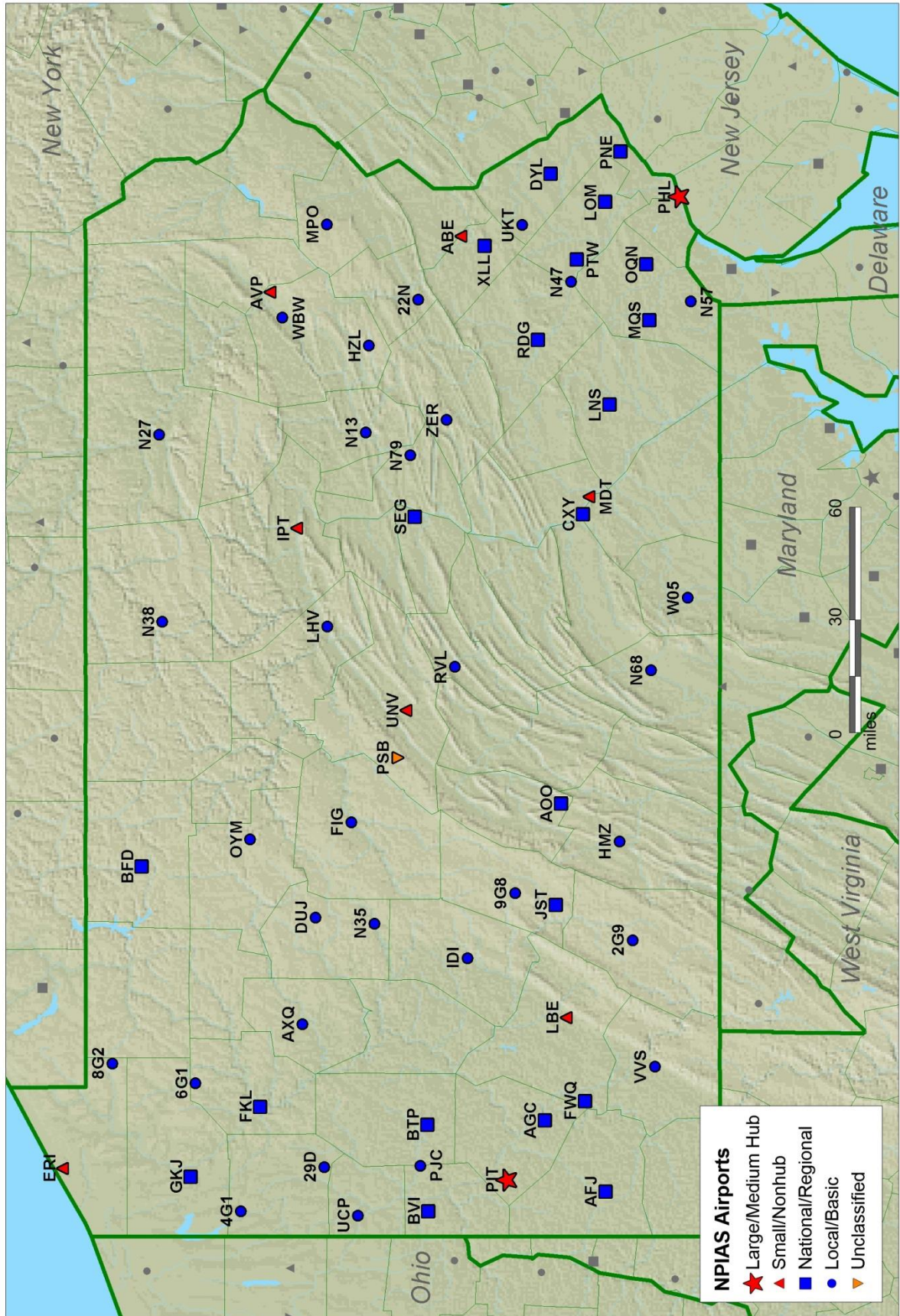
# Oklahoma



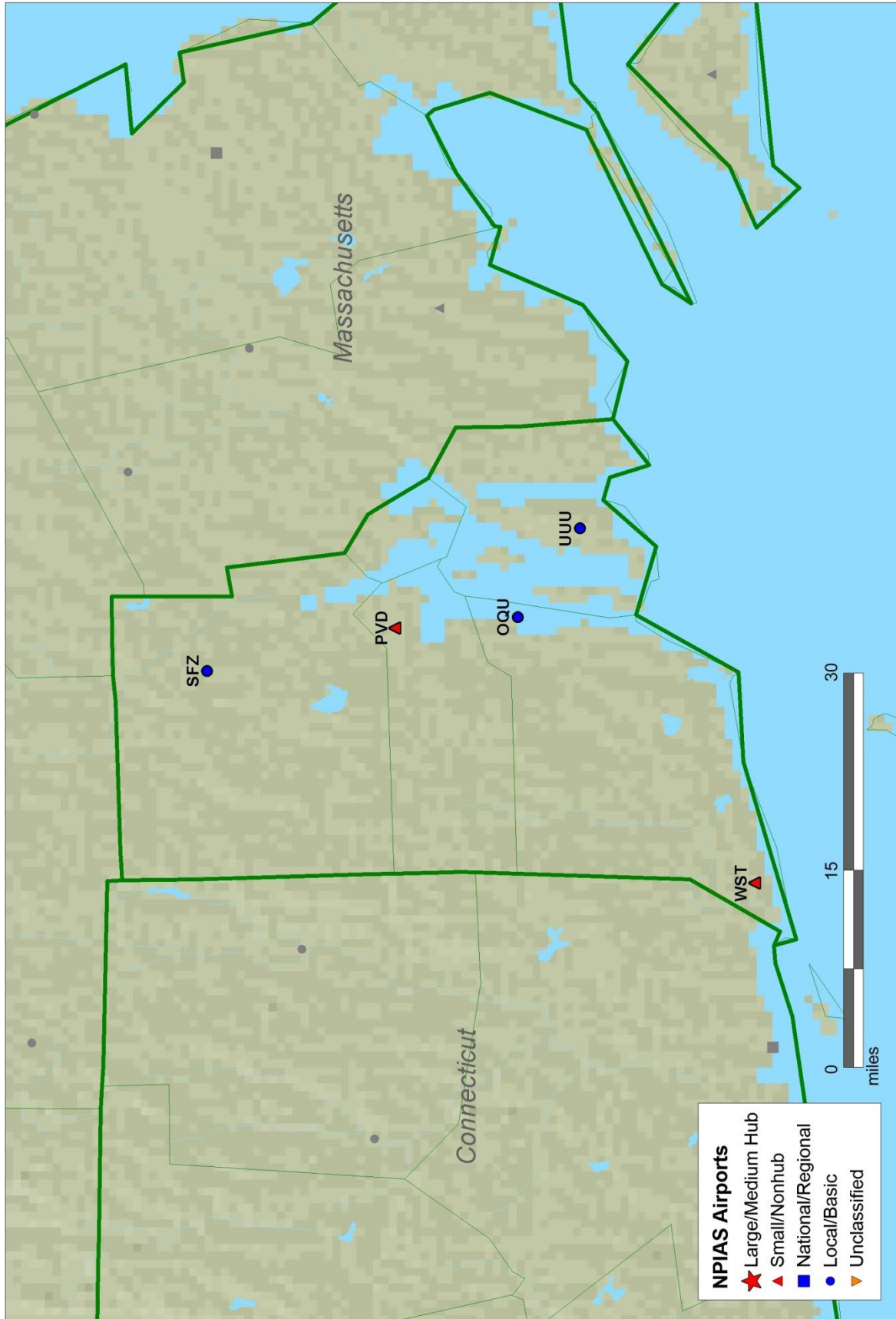
# Oregon



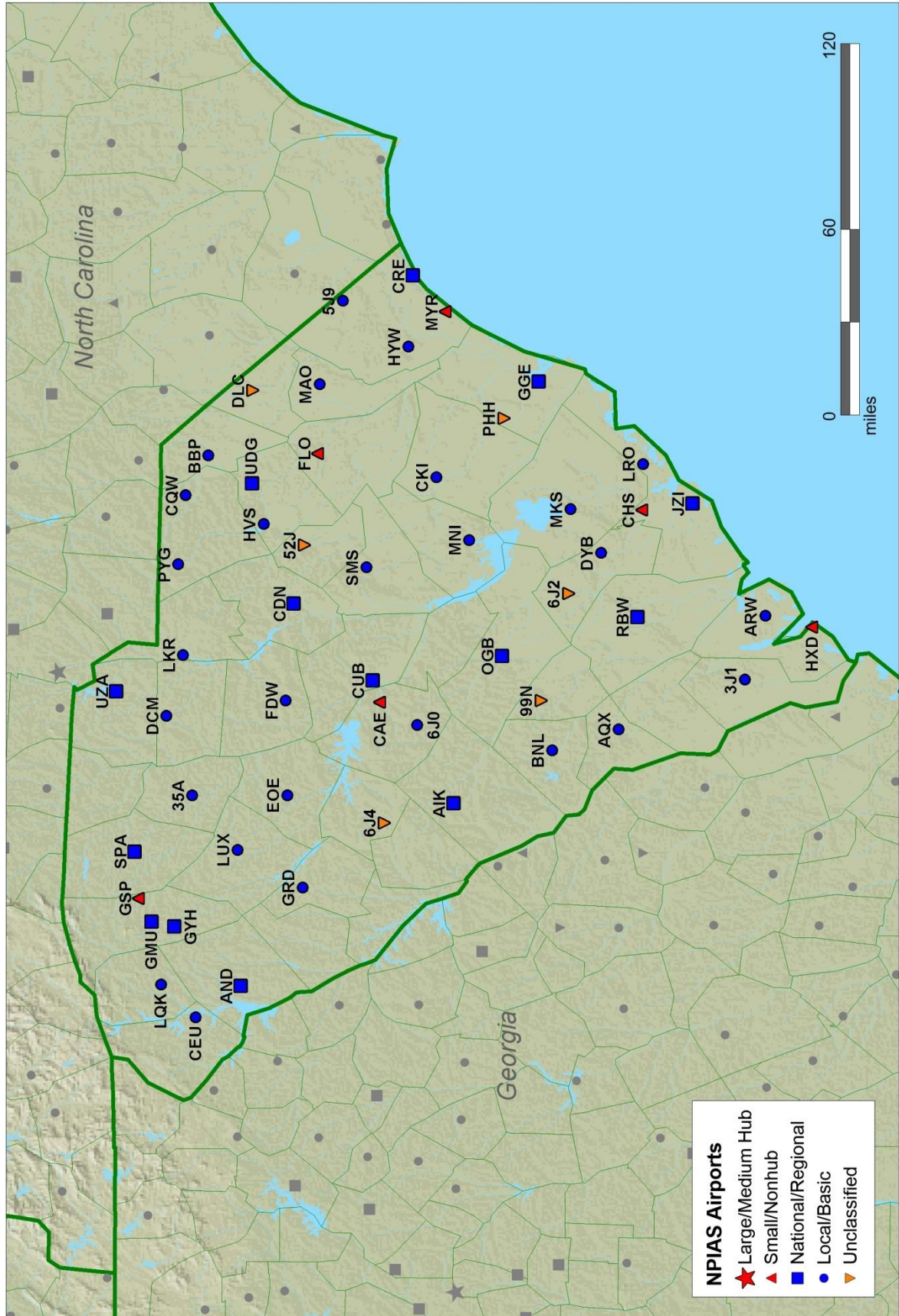
# Pennsylvania



# Rhode Island



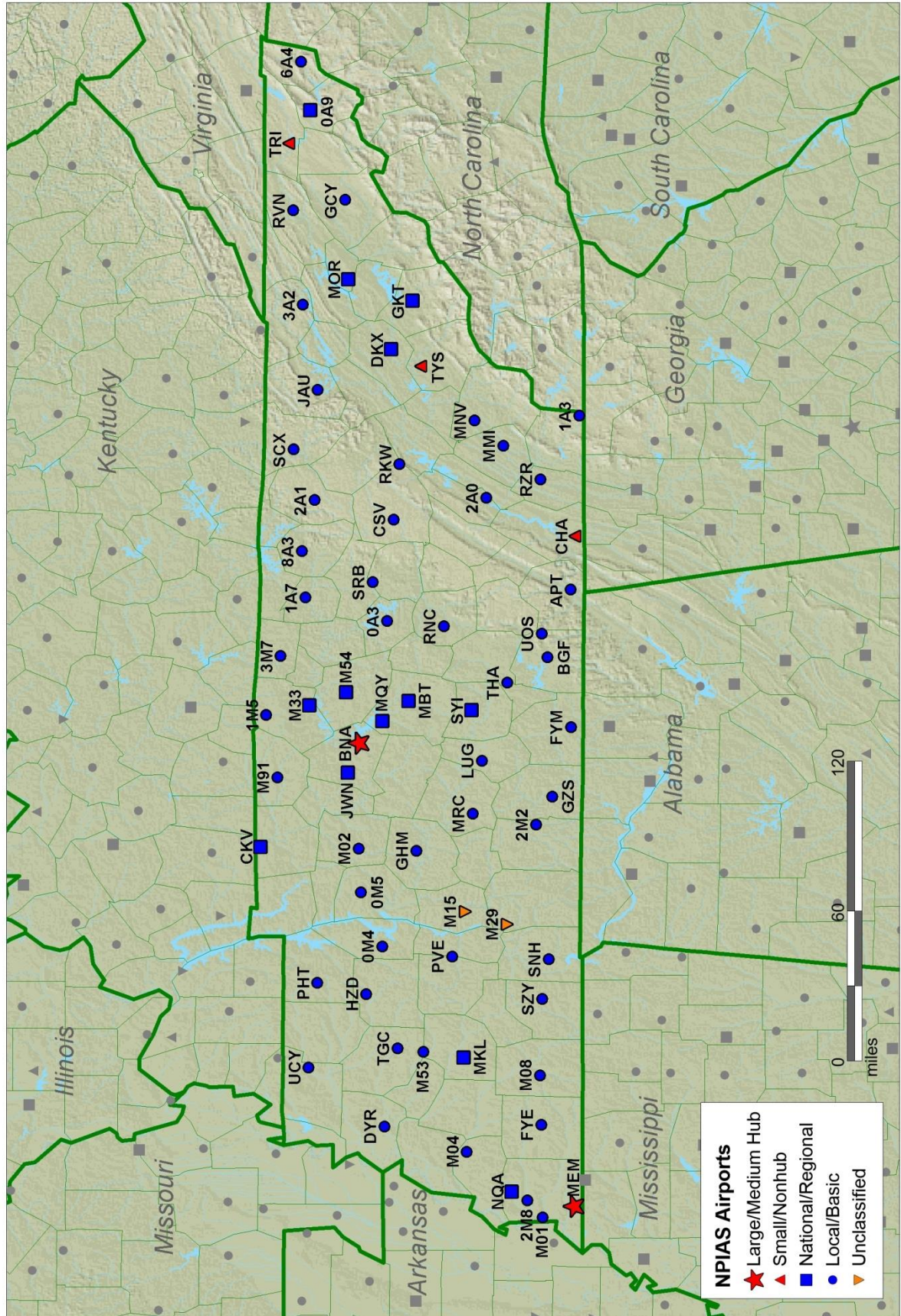
# South Carolina



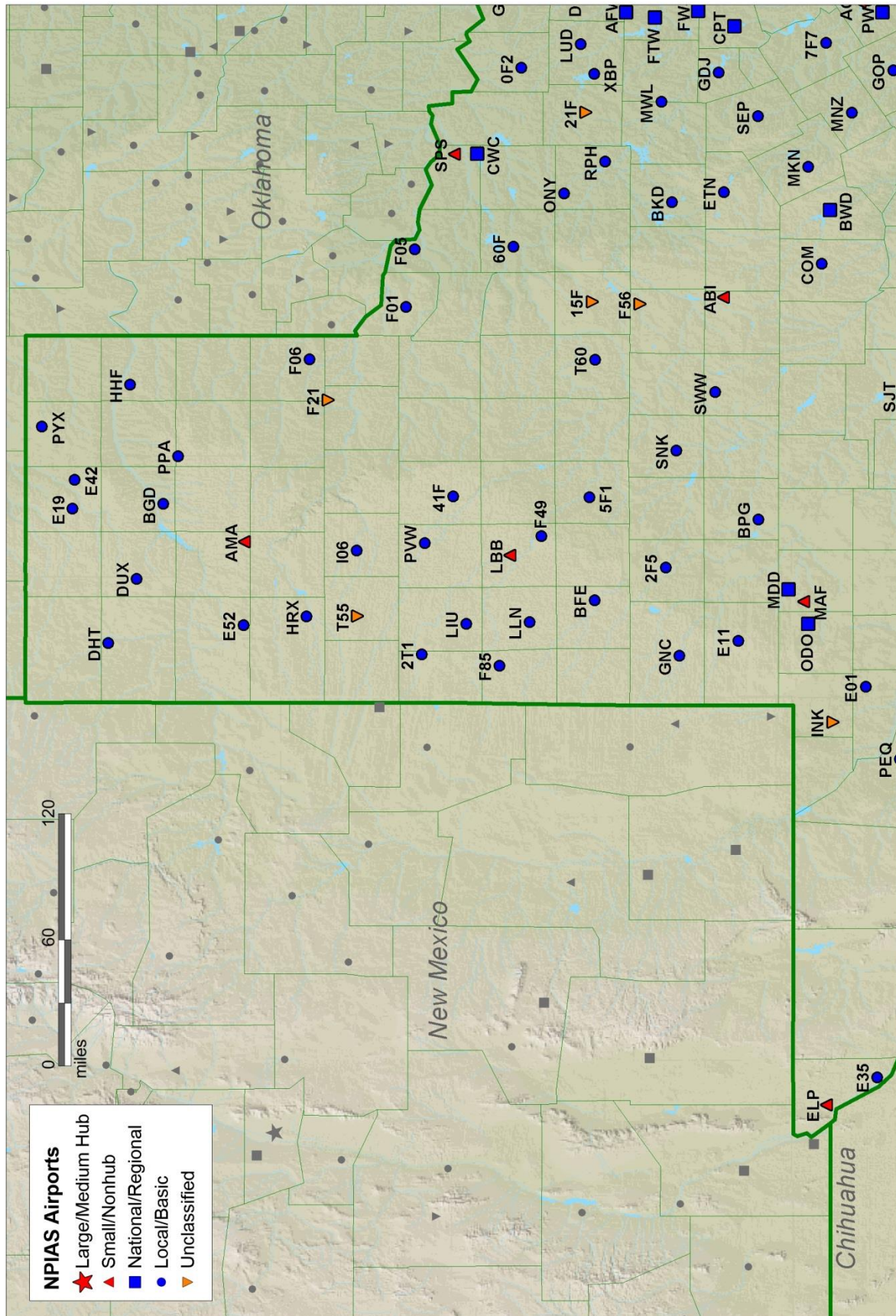
## B-50



# Tennessee



# Texas (Northwest)



This map displays the NPIAS (National Public Infrastructure Advisory Studies) Airports in the El Paso region, including parts of New Mexico, Texas, and Coahuila de Zaragoza, Mexico. The map shows the geographical distribution of airports, categorized by their size and function. A legend in the bottom right corner defines the symbols used:

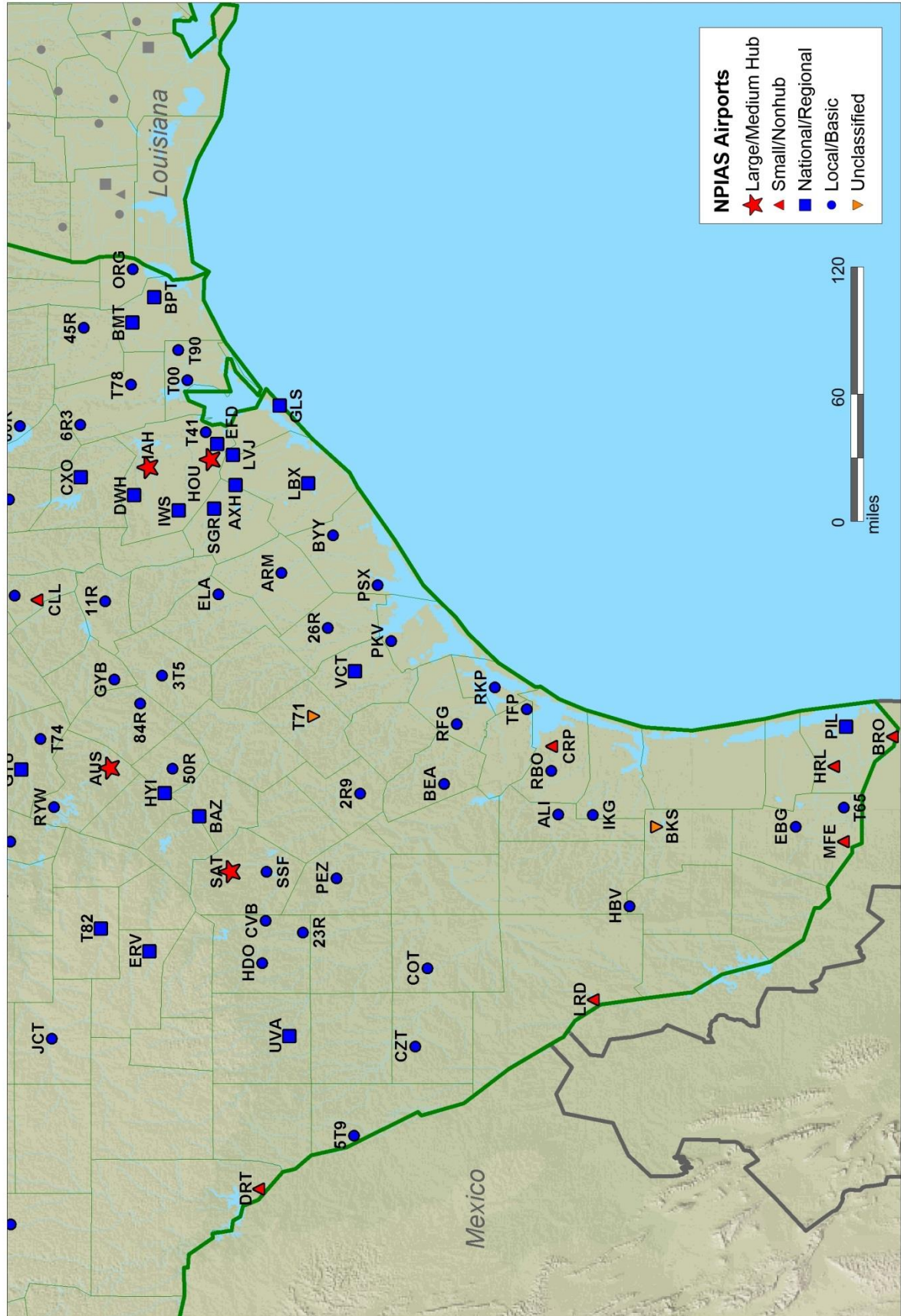
- NPIAS Airports**
  - Large/Medium Hub: Red star
  - Small/Nonhub: Red triangle
  - National/Regional: Blue square
  - Local/Basic: Blue circle
  - Unclassified: Orange triangle

The map includes a scale bar indicating distances in miles (0, 60, 120). Major cities and states are labeled, including New Mexico, Texas, Coahuila de Zaragoza, and Mexico. The map shows a high concentration of airports in the El Paso area, with many airports classified as National/Regional or Local/Basic. The map also shows the border between the United States and Mexico, and the location of the El Paso International Airport (ELP).

## B-54



# Texas (Southeast)



# Utah

