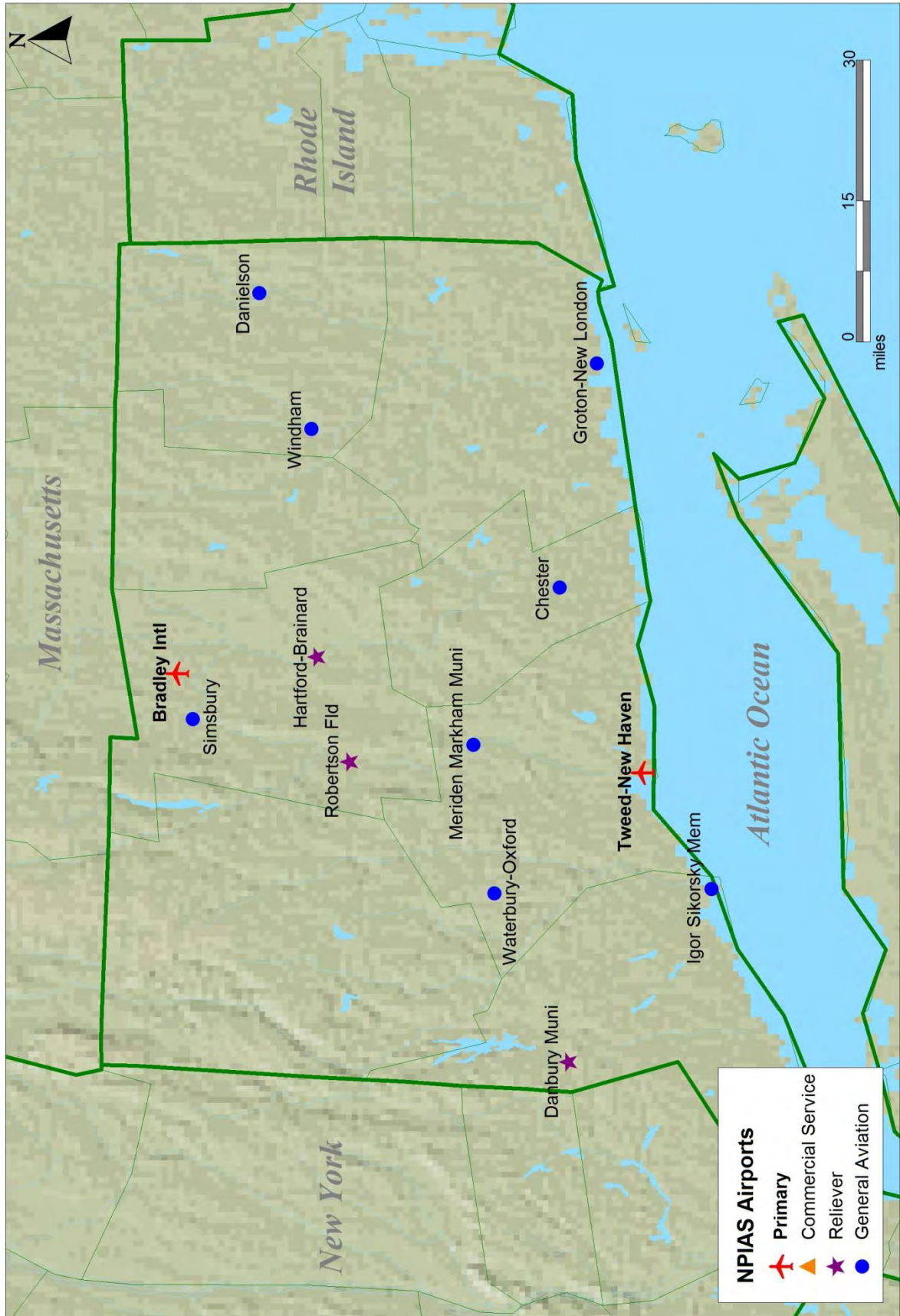
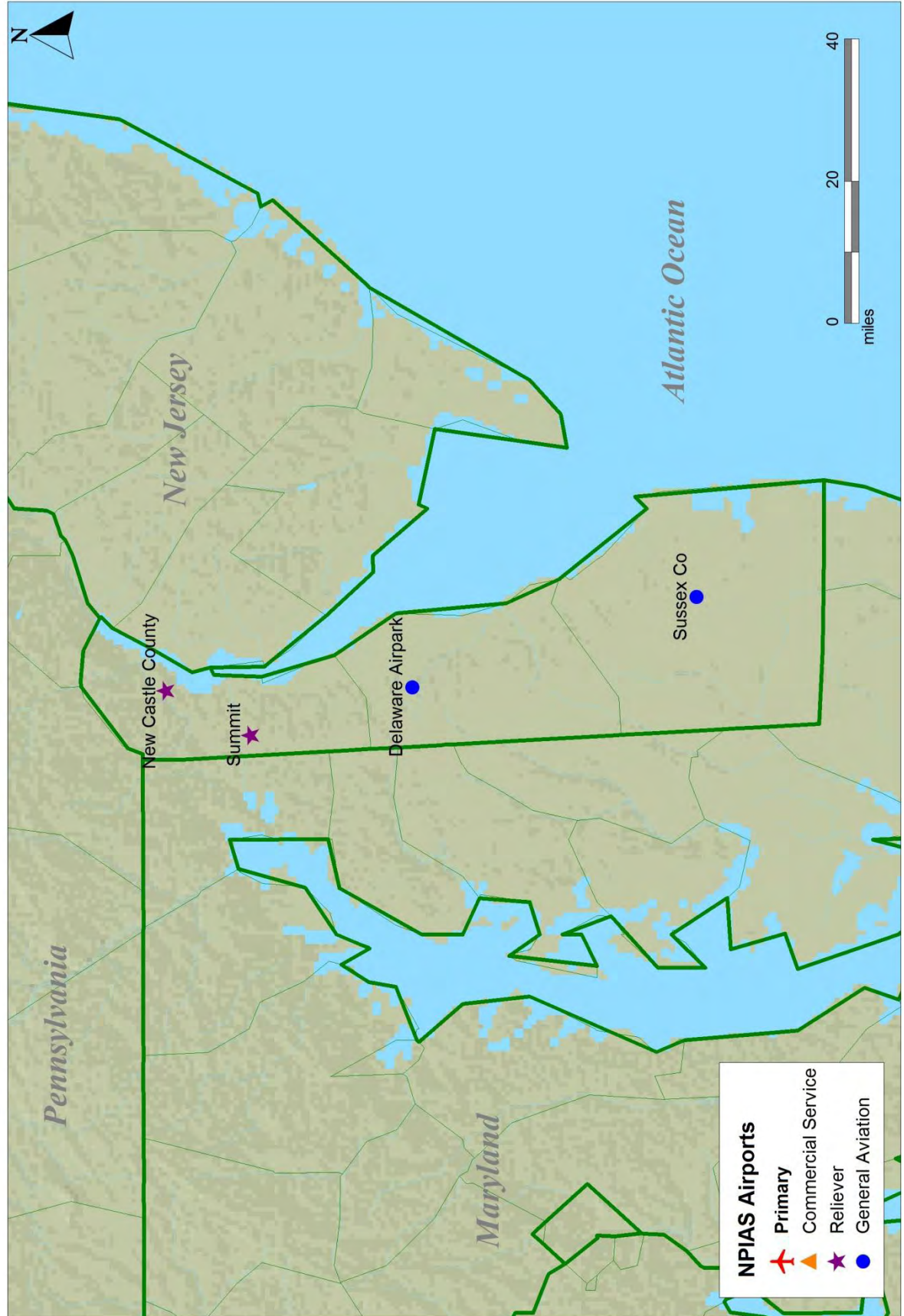


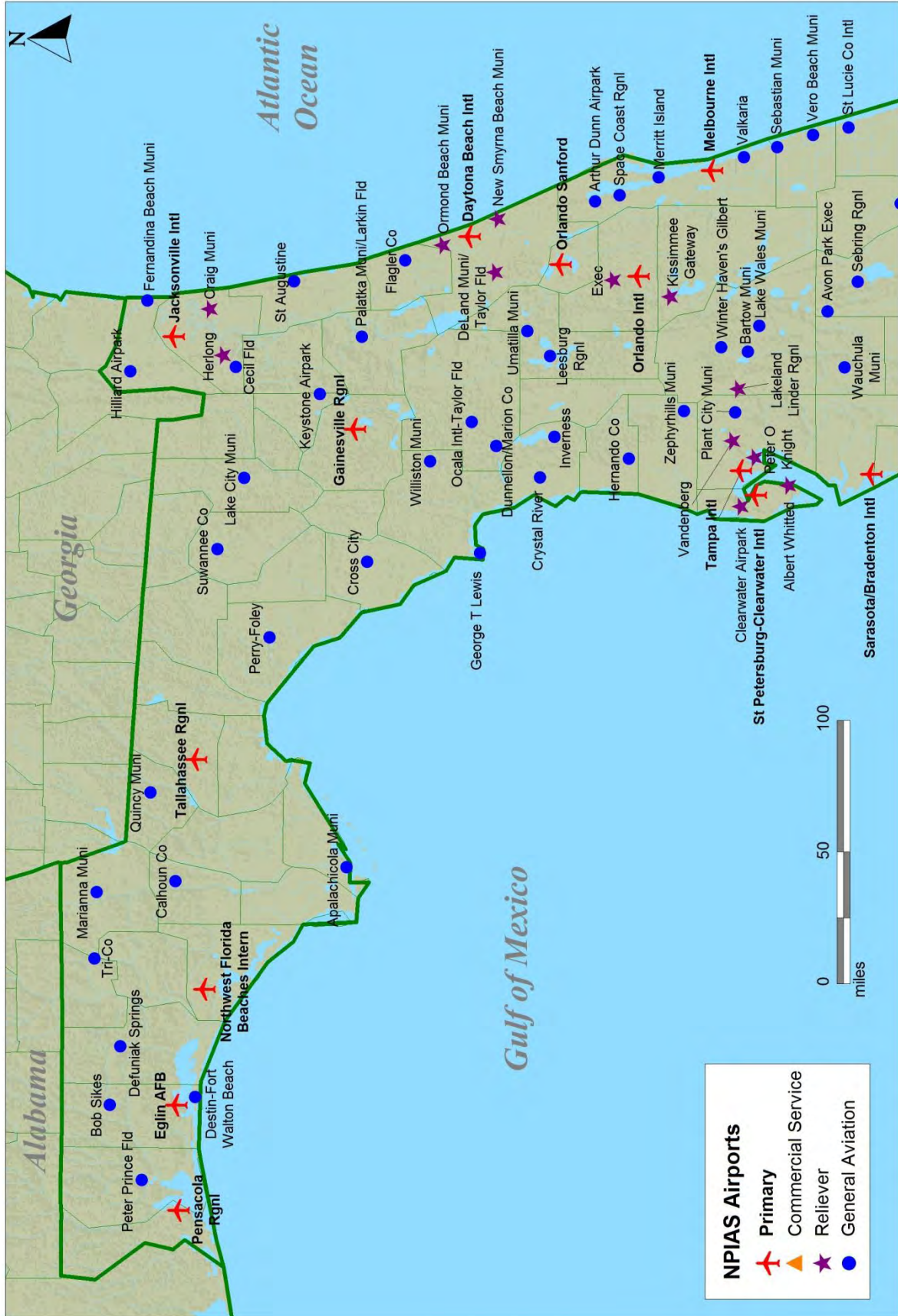
Connecticut



Delaware



Florida (North)



NPIAS Airports

- Primary (Red airplane icon)
- Commercial Service (Orange triangle icon)
- Reliever (Purple star icon)
- General Aviation (Blue circle icon)

Florida Airports:

- Primary:** Sarasota/Bradenton Intl, Charlotte Co, SW Florida Intl, Palm Beach Intl, Fort Lauderdale/Hollywood Intl, Miami Intl, Key West Intl.
- Commercial Service:** Key West Intl.
- Reliever:** Albert Whitted, Venice Muni, Arcadia Muni, Wauchula Muni, Avon Park Exec, Sebring Rgnl, Okeechobee Co, Witham Fld, North Palm Beach Co, Palm Beach Co Park, Boca Raton, Pompano Beach Airpark, Fort Lauderdale Exec, North Perry, Opa Locka, Kendall-Tamiami Exec, Homestead Gen Aviation.
- General Aviation:** Vero Beach Muni, St Lucie Co Intl, Wimauma Fld, Palm Beach Co Glades, Belle Glade State Muni, Airglades, La Belle Muni, Page Fld, Naples Muni, Marco Island, Everglades Airpark, Dade-Collier T and T, Immokalee.

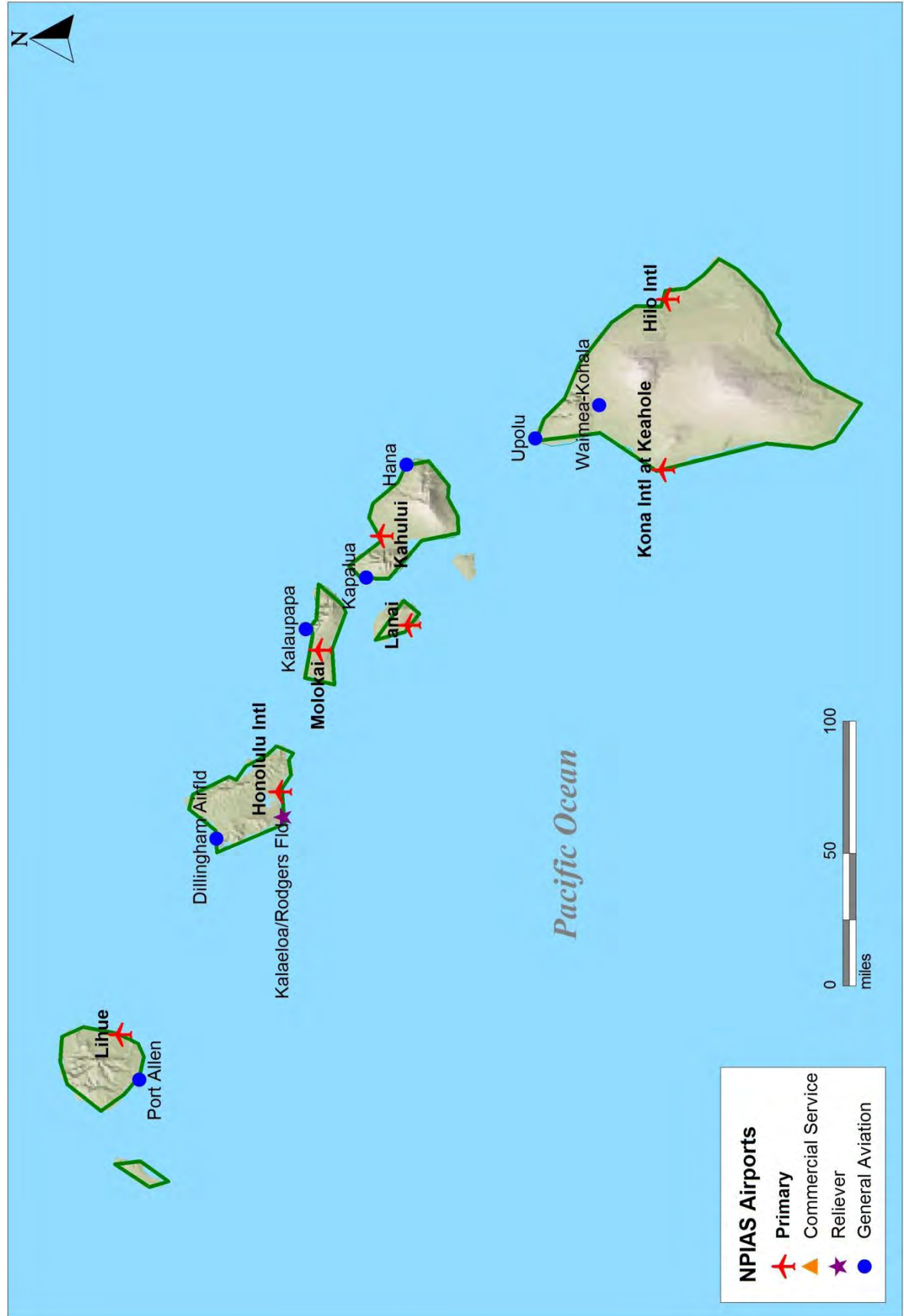
Geographic Labels: Gulf of Mexico, Atlantic Ocean, The Florida Keys Marathon.

Scale: 0 to 100 miles.

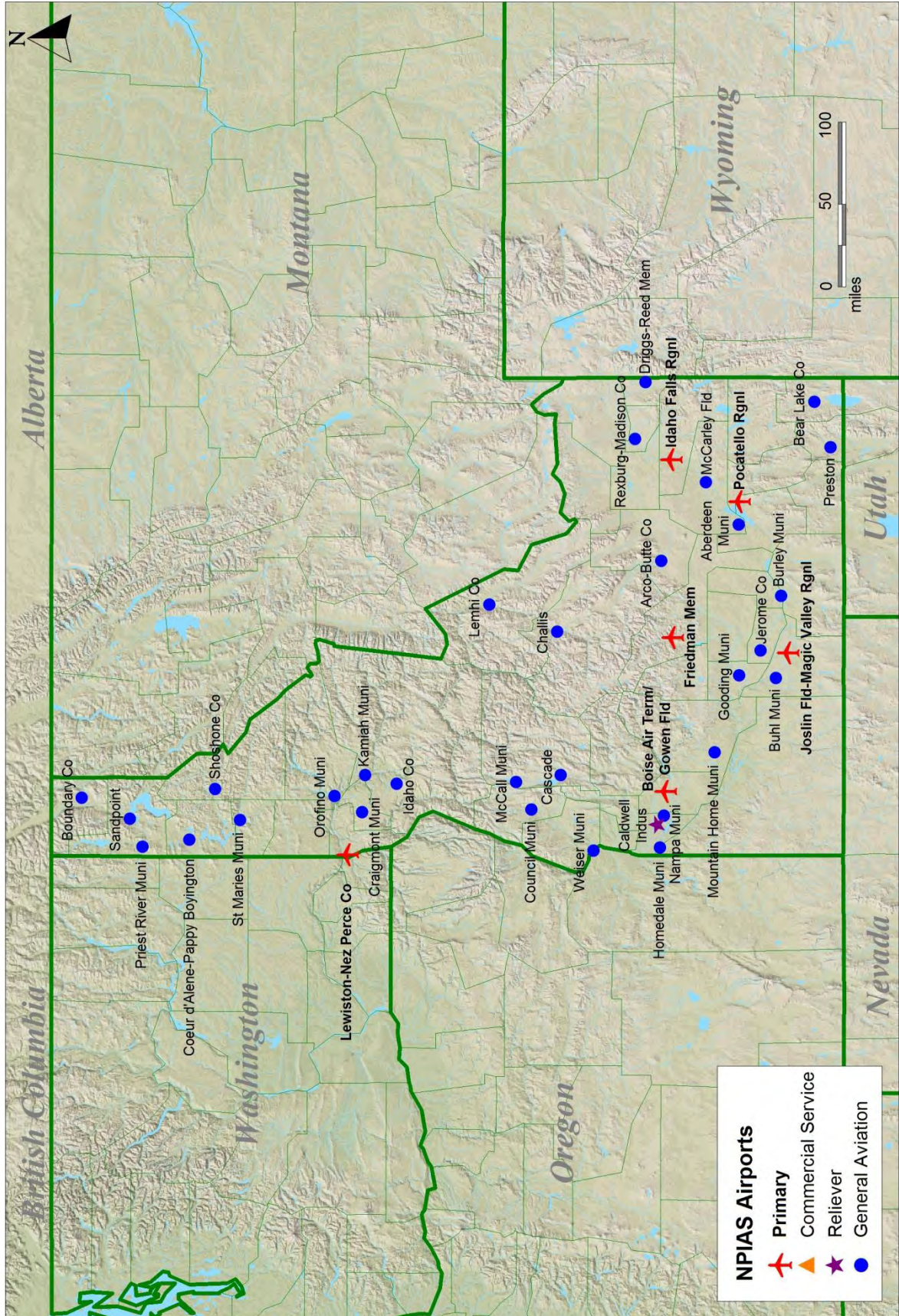
North Arrow: N

[illegible]

Hawaii



Idaho



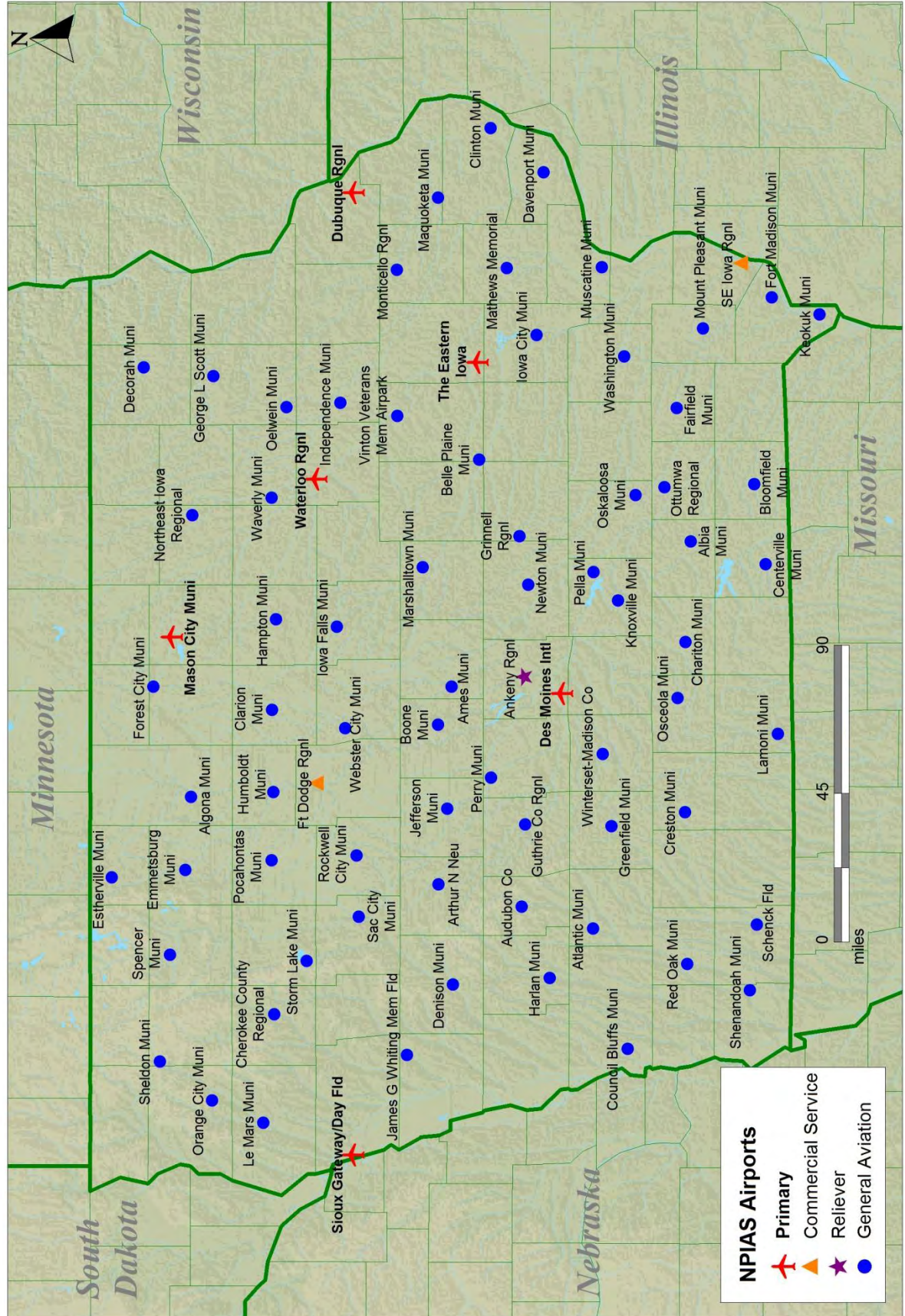
This map displays the National Public Infrastructure Airport System (NPIAS) in the Chicago region. It includes a legend for airport types: Primary (red airplane icon), Commercial Service (orange triangle icon), Reliever (purple star icon), and General Aviation (blue circle icon). The map shows the distribution of these airports across Illinois and its neighboring states: Indiana, Michigan, Wisconsin, Kentucky, Missouri, and Iowa. Major airports like Chicago O'Hare International and Midway International are highlighted as Primary airports. The map also shows the locations of numerous reliever and general aviation airports throughout the region. A scale bar indicates distances up to 100 miles, and a north arrow is present in the top right corner.

This map displays the locations of National Public Infrastructure Airport System (NPIAS) airports in Indiana. The airports are categorized by their primary function, indicated by different symbols: Primary (red airplane), Commercial Service (orange triangle), Reliever (purple star), and General Aviation (blue circle). The map includes labels for major water bodies (Lake Michigan, Lake Erie), surrounding states (Michigan, Ohio, Kentucky, Illinois), and various counties and municipalities within Indiana. A scale bar in miles (0, 50, 100) and a north arrow are also present.

NPIAS Airports

- Primary
- Commercial Service
- Reliever
- General Aviation

Iowa



[illegible]