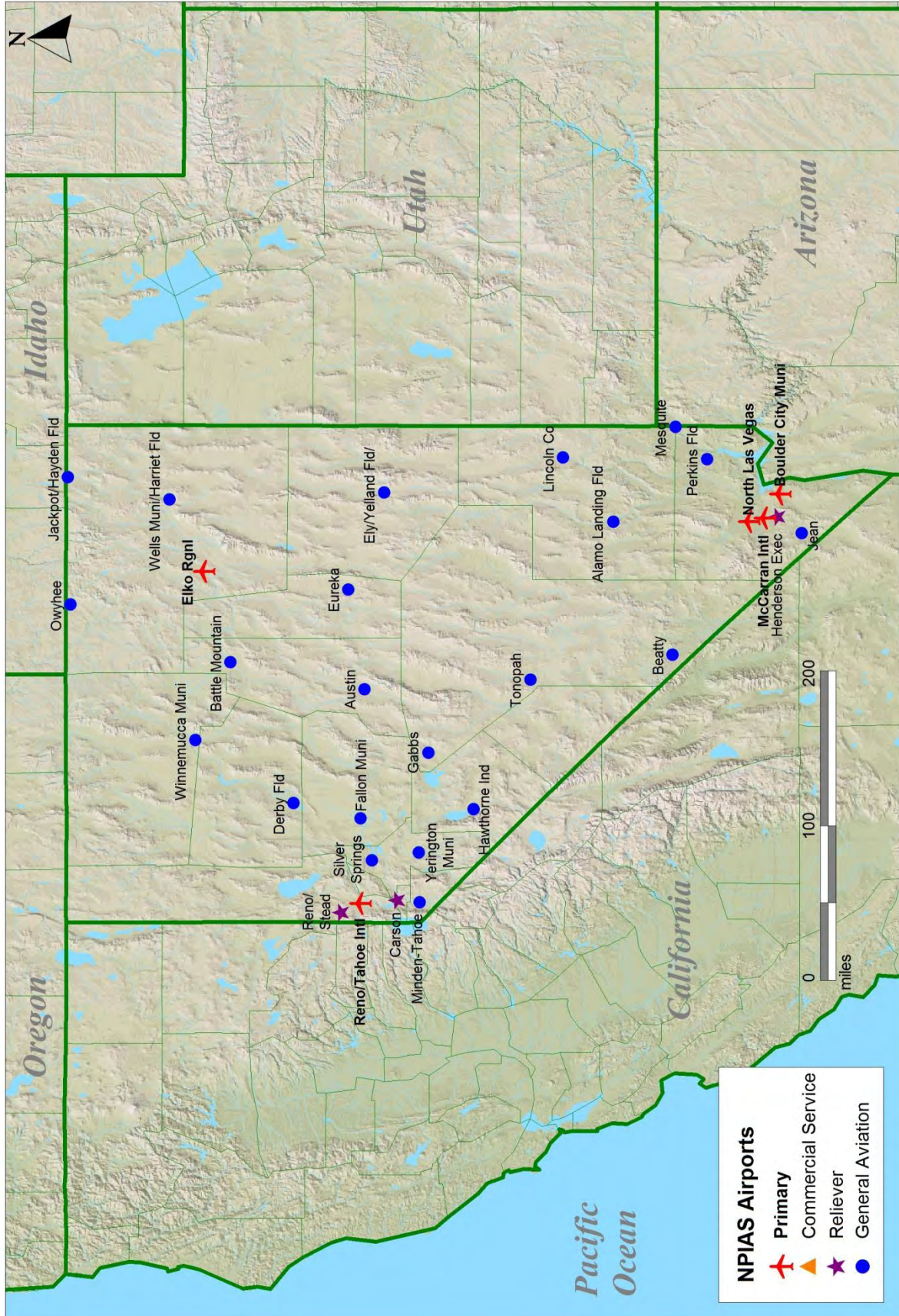
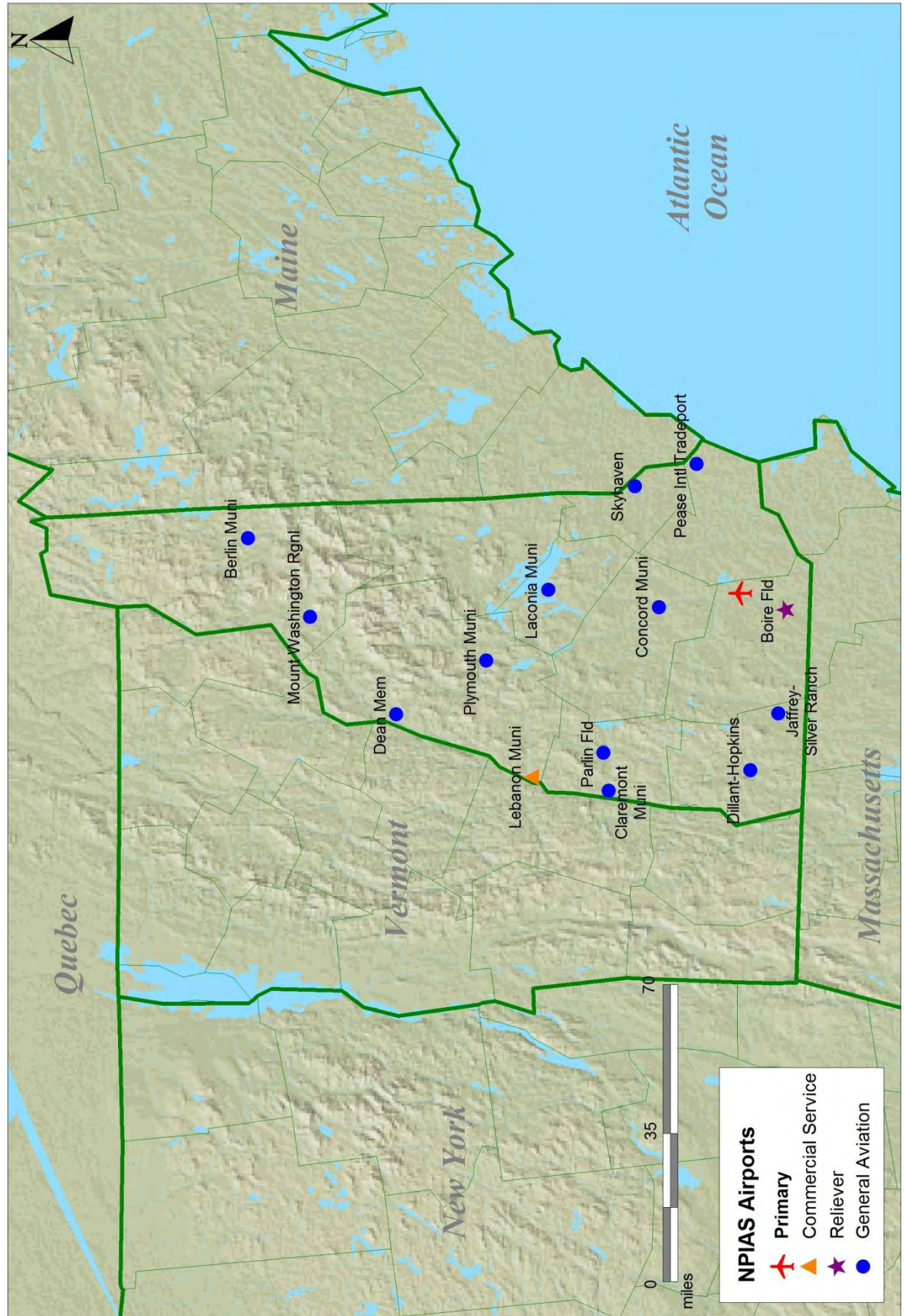


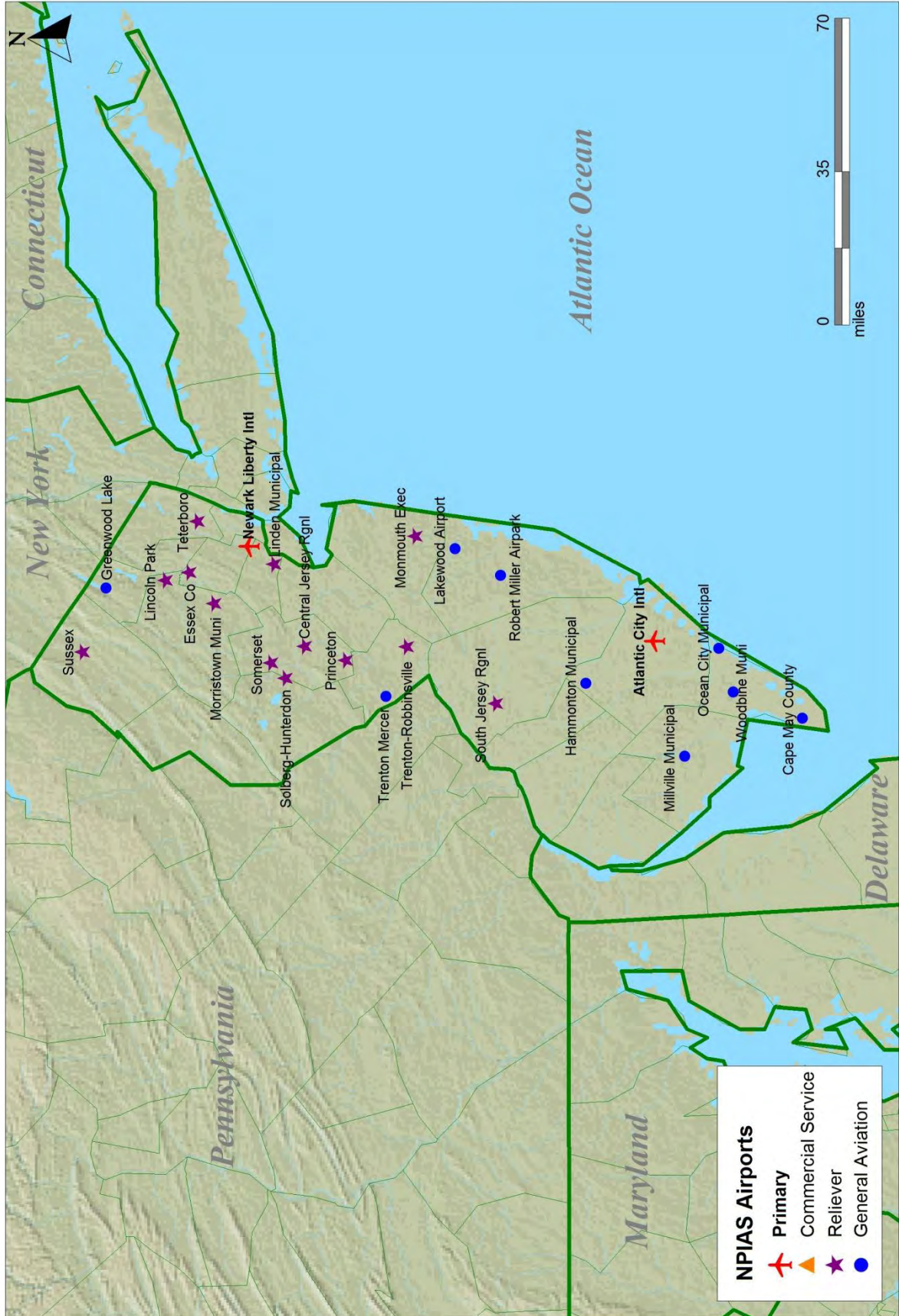
Nevada



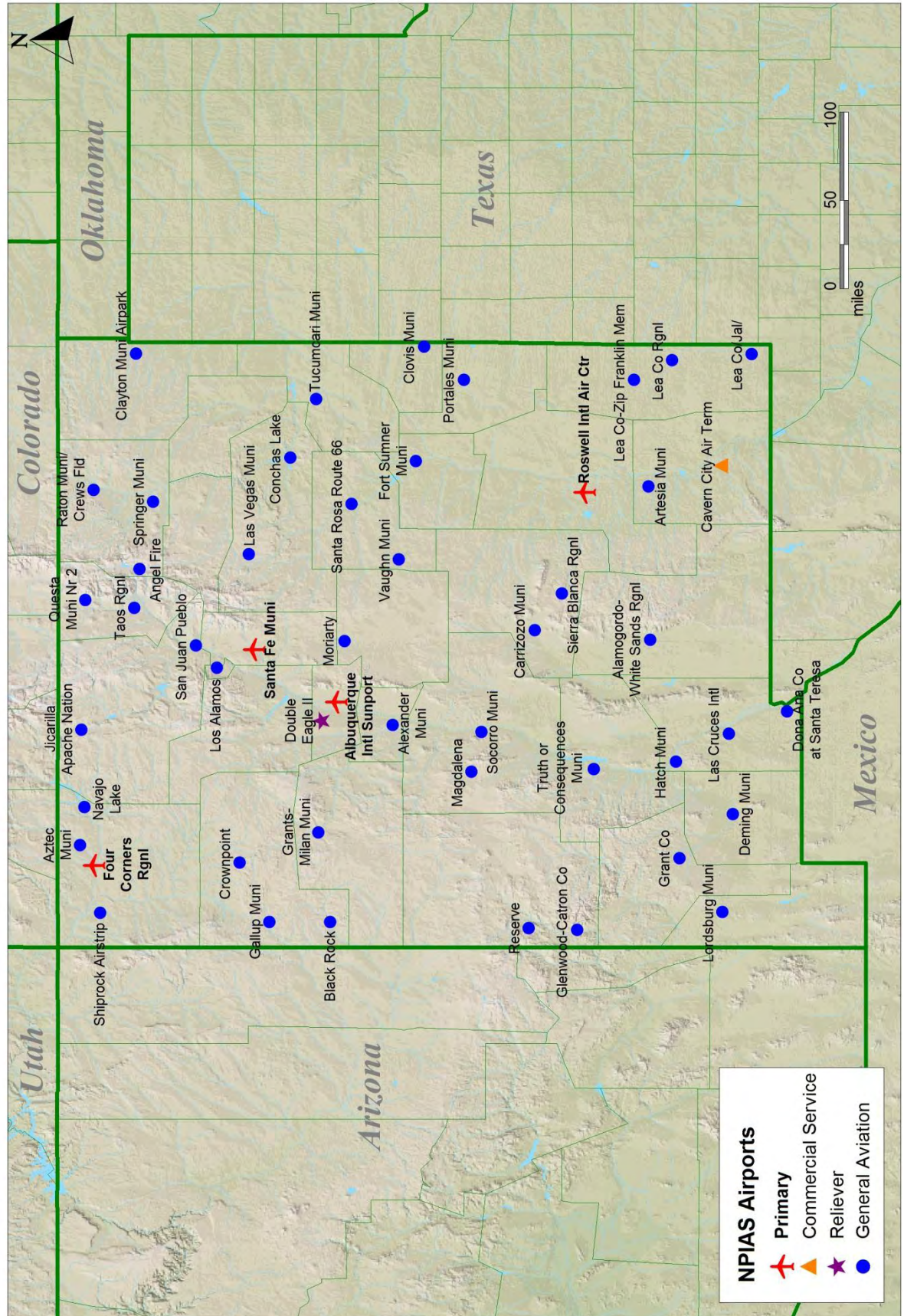
New Hampshire



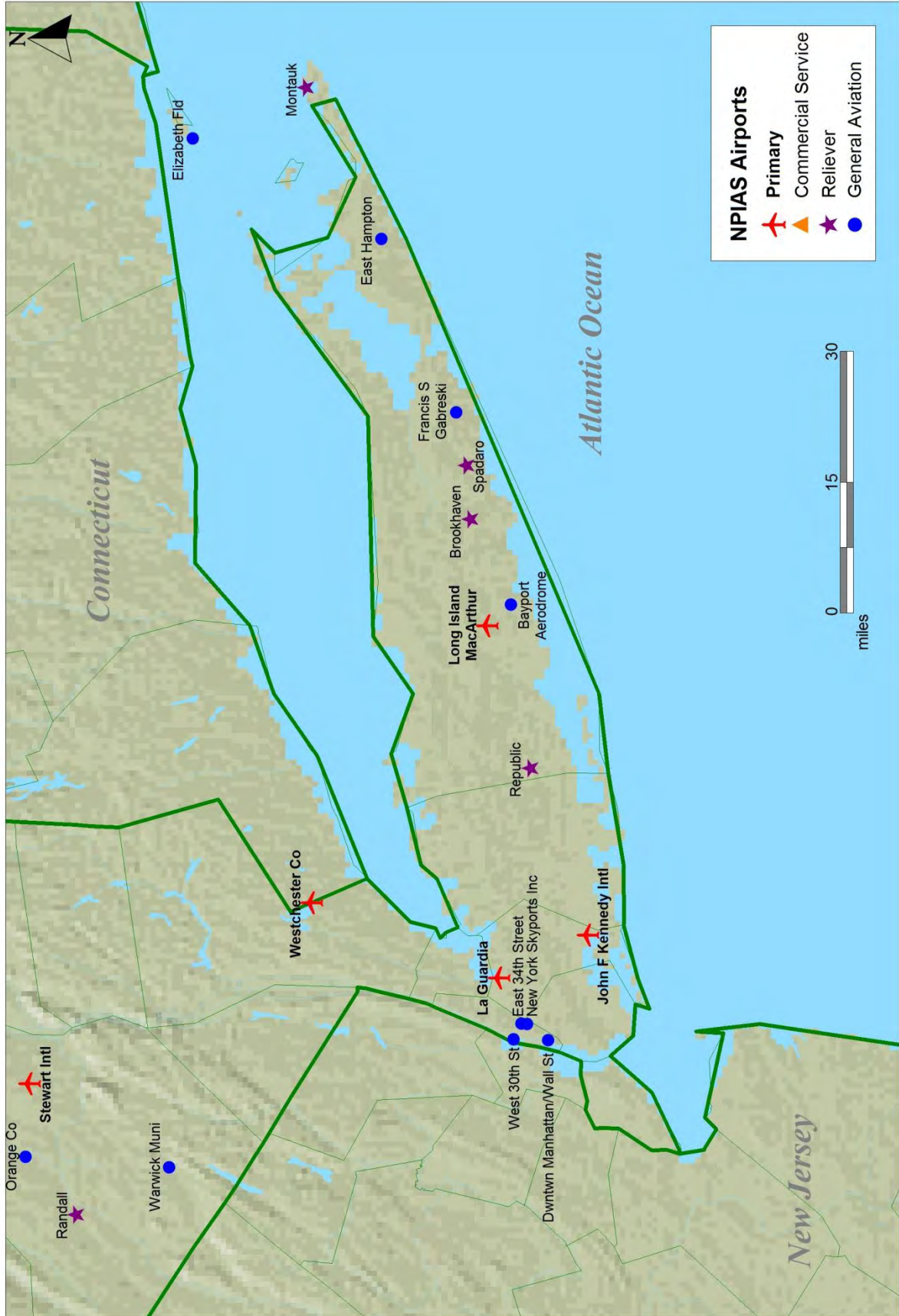
New Jersey



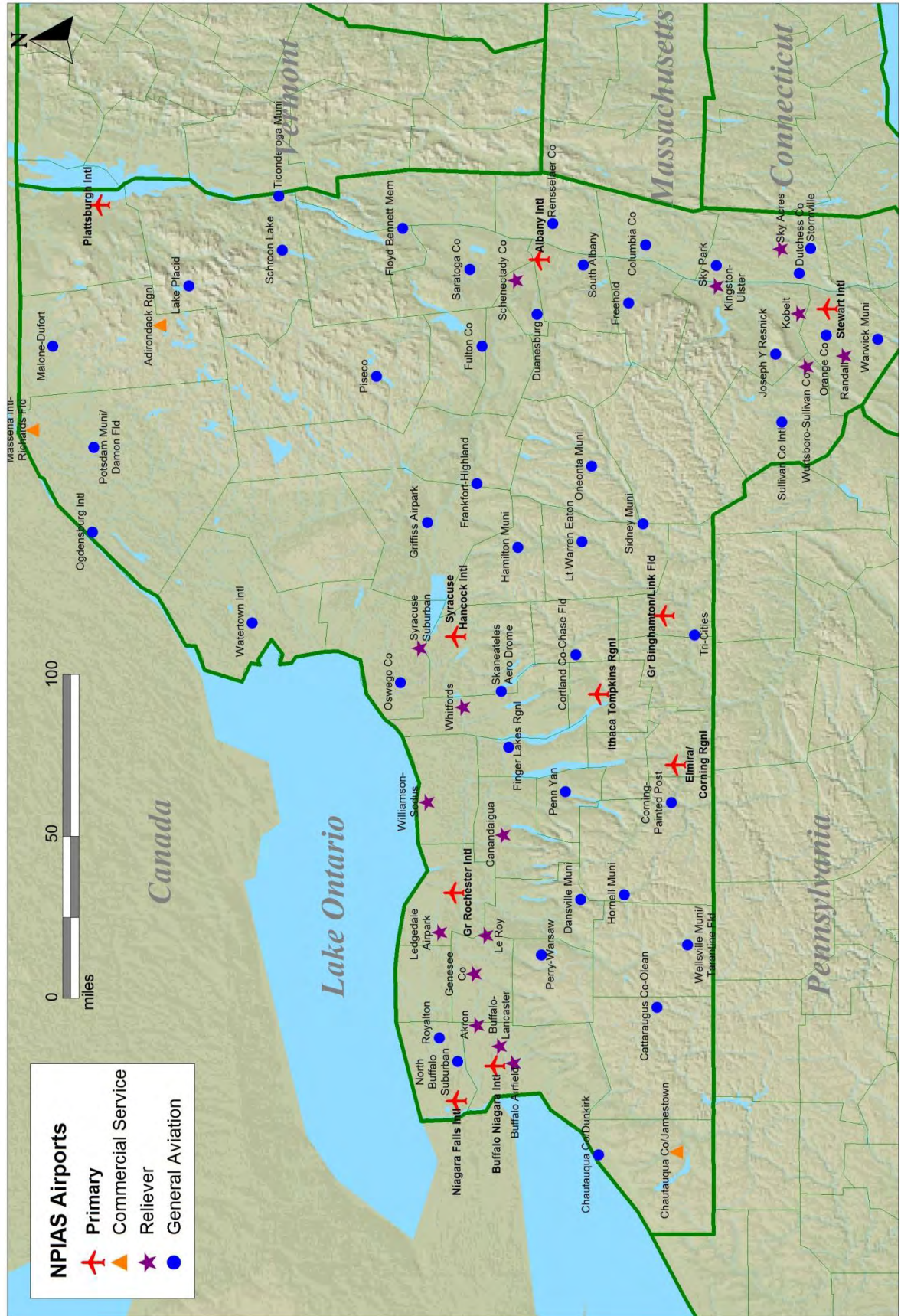
New Mexico



New York City



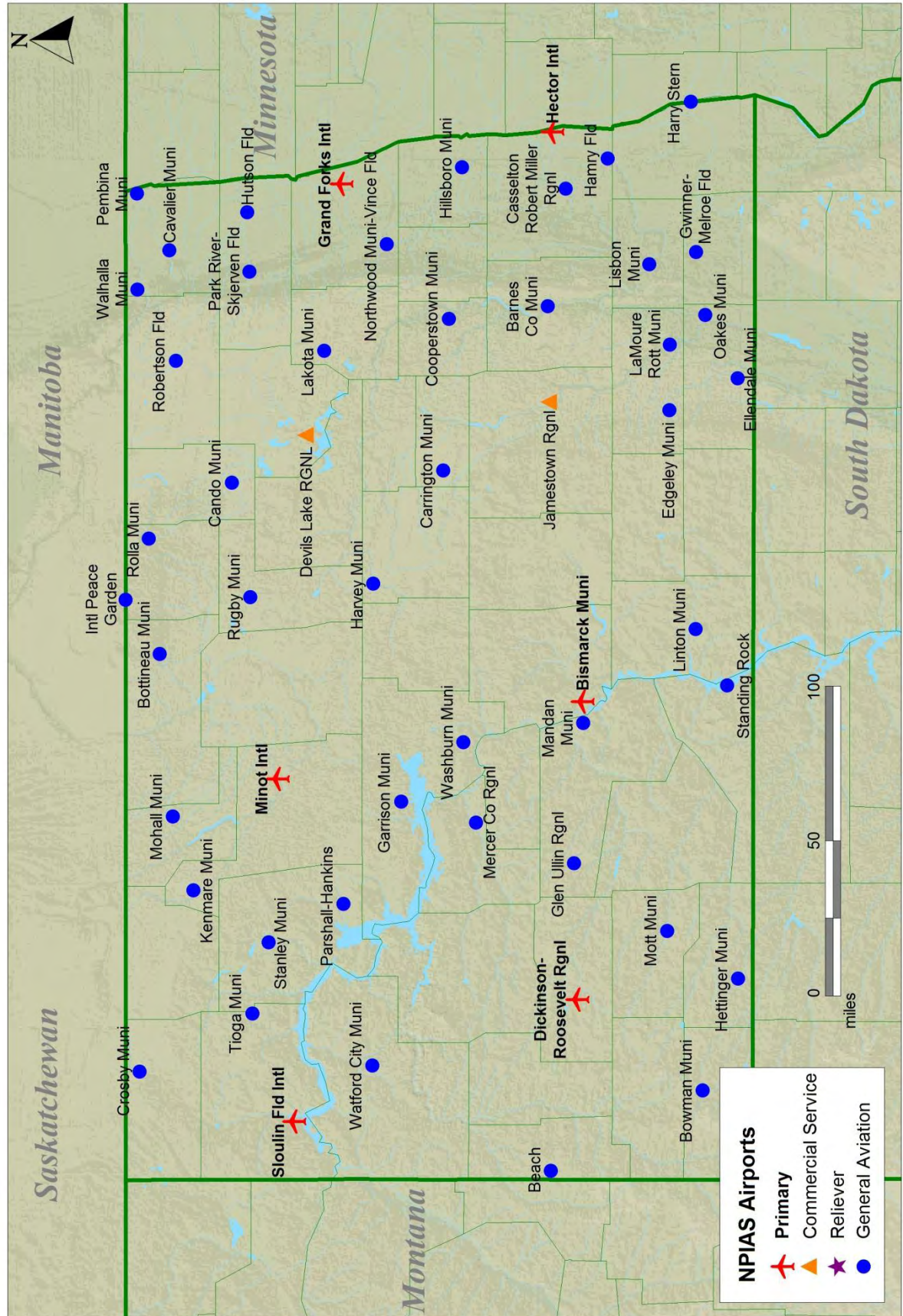
New York (Western and Upstate)



NPIAS Airports

- Primary
- Commercial Service
- Reliever
- General Aviation

North Dakota



This map displays the locations of National Public Infrastructure Airport System (NPIAS) airports in Ohio. The airports are categorized by their primary function, indicated by different symbols: red airplanes for Primary airports, orange triangles for Commercial Service airports, purple stars for Reliever airports, and blue dots for General Aviation airports. The map includes major highways, county boundaries, and surrounding states: Michigan, Indiana, Pennsylvania, West Virginia, and Kentucky. A legend in the bottom right corner defines the symbols and categories. A scale bar in the top right corner shows distances in miles (0, 50, 100). A north arrow is located in the top left corner.

NPIAS Airports

- Primary (Red Airplane)
- Commercial Service (Orange Triangle)
- Reliever (Purple Star)
- General Aviation (Blue Dot)