

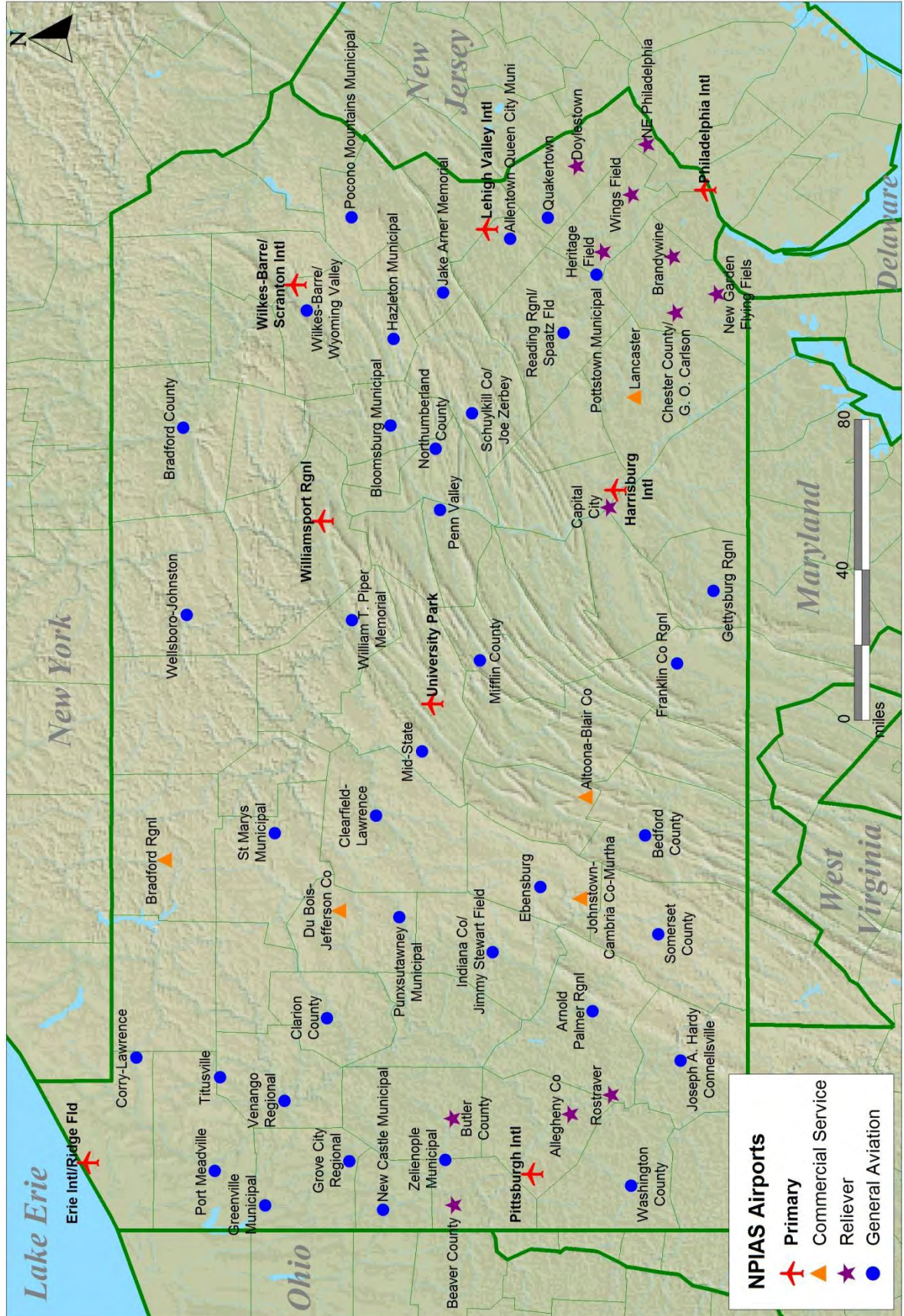
[illegible]

NPIAS Airports

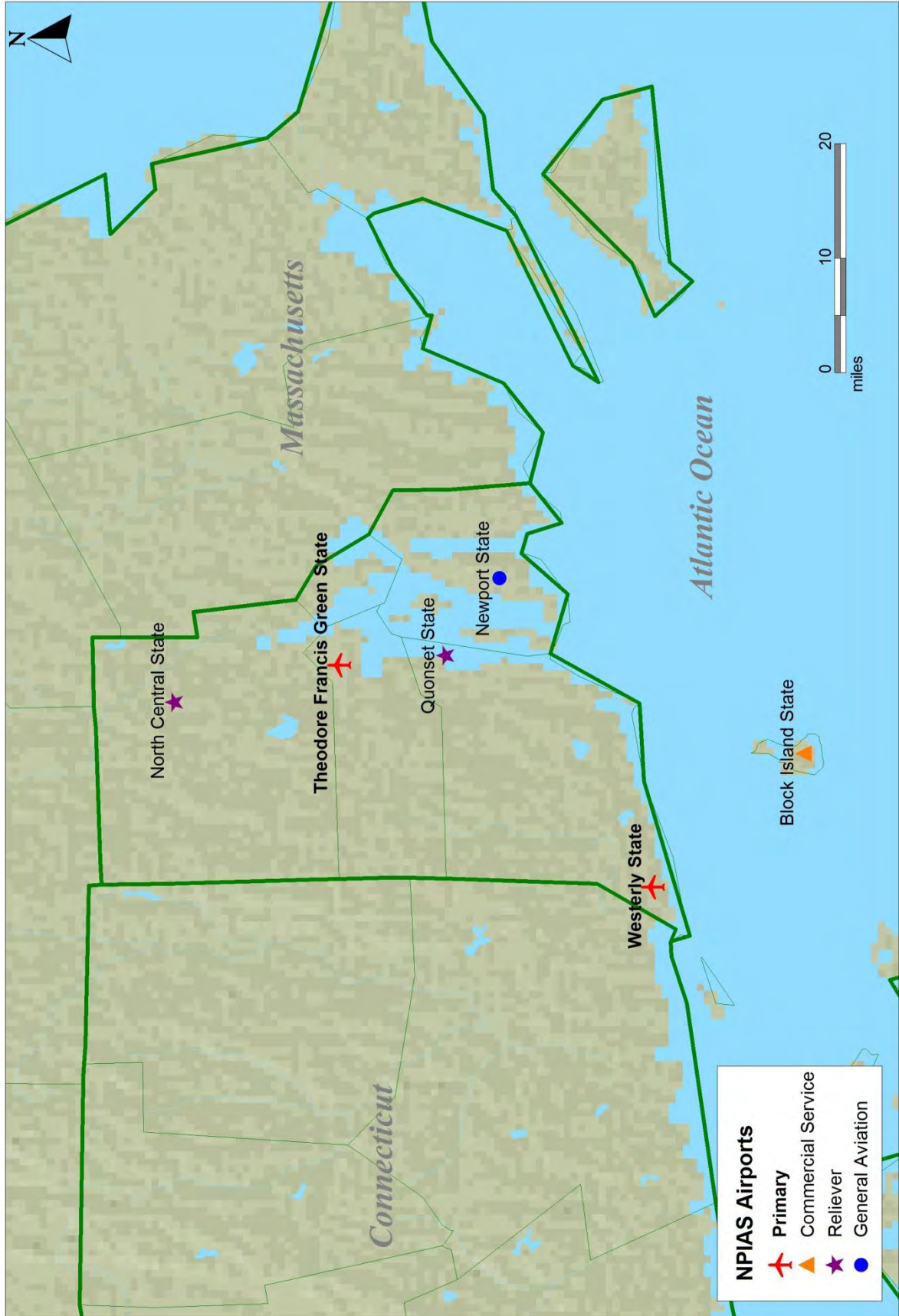
- Primary
- Commercial Service
- Reliever
- General Aviation

0 50 100 miles

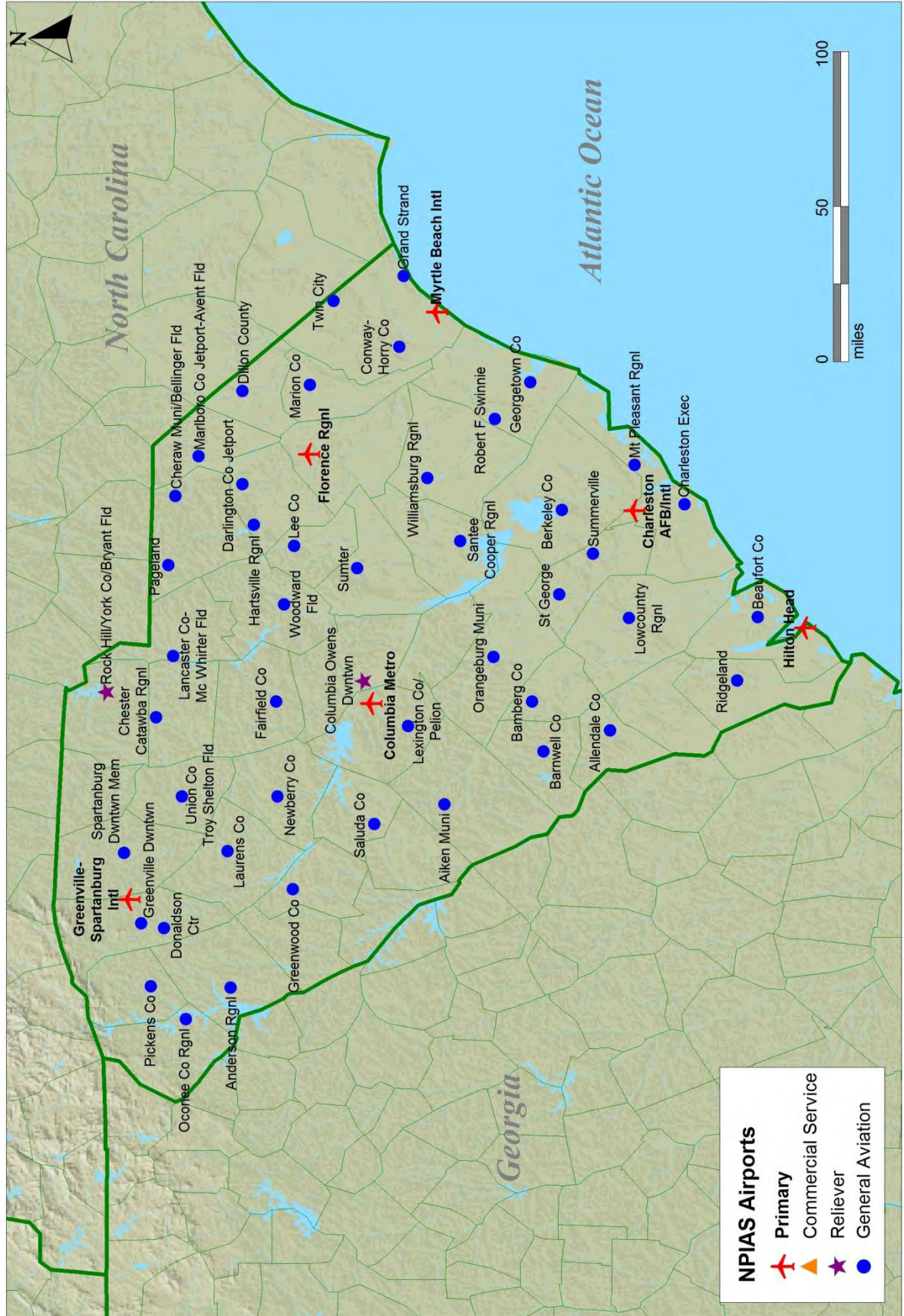
Pennsylvania



Rhode Island



South Carolina

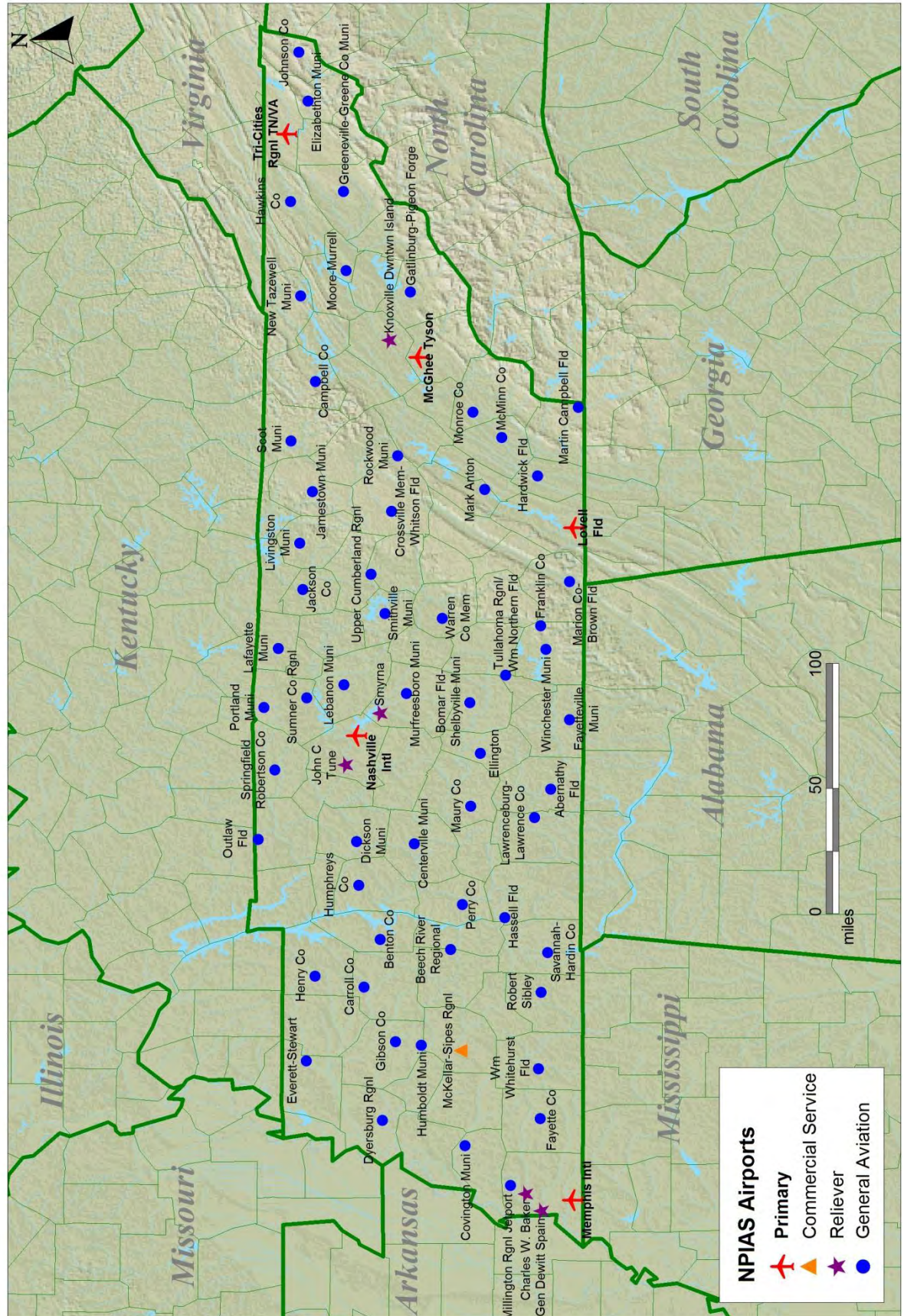


NPIAS Airports

- Primary (Red Triangle)
- Commercial Service (Orange Triangle)
- Reliever (Purple Star)
- General Aviation (Blue Dot)

Map of North Dakota showing NPIAS Airports. The map includes state boundaries for North Dakota, Minnesota, Iowa, Nebraska, Montana, and Wyoming. Major cities and towns are labeled. Airports are marked with symbols: red triangles for Primary, orange triangles for Commercial Service, purple stars for Reliever, and blue dots for General Aviation. A legend in the bottom right corner explains the symbols. A scale bar in miles (0, 50, 100) and a north arrow are also present.

Tennessee



NPIAS Airports

- Primary (Red Airplane)
- Commercial Service (Orange Triangle)
- Reliever (Purple Star)
- General Aviation (Blue Dot)

Oklahoma

New Mexico

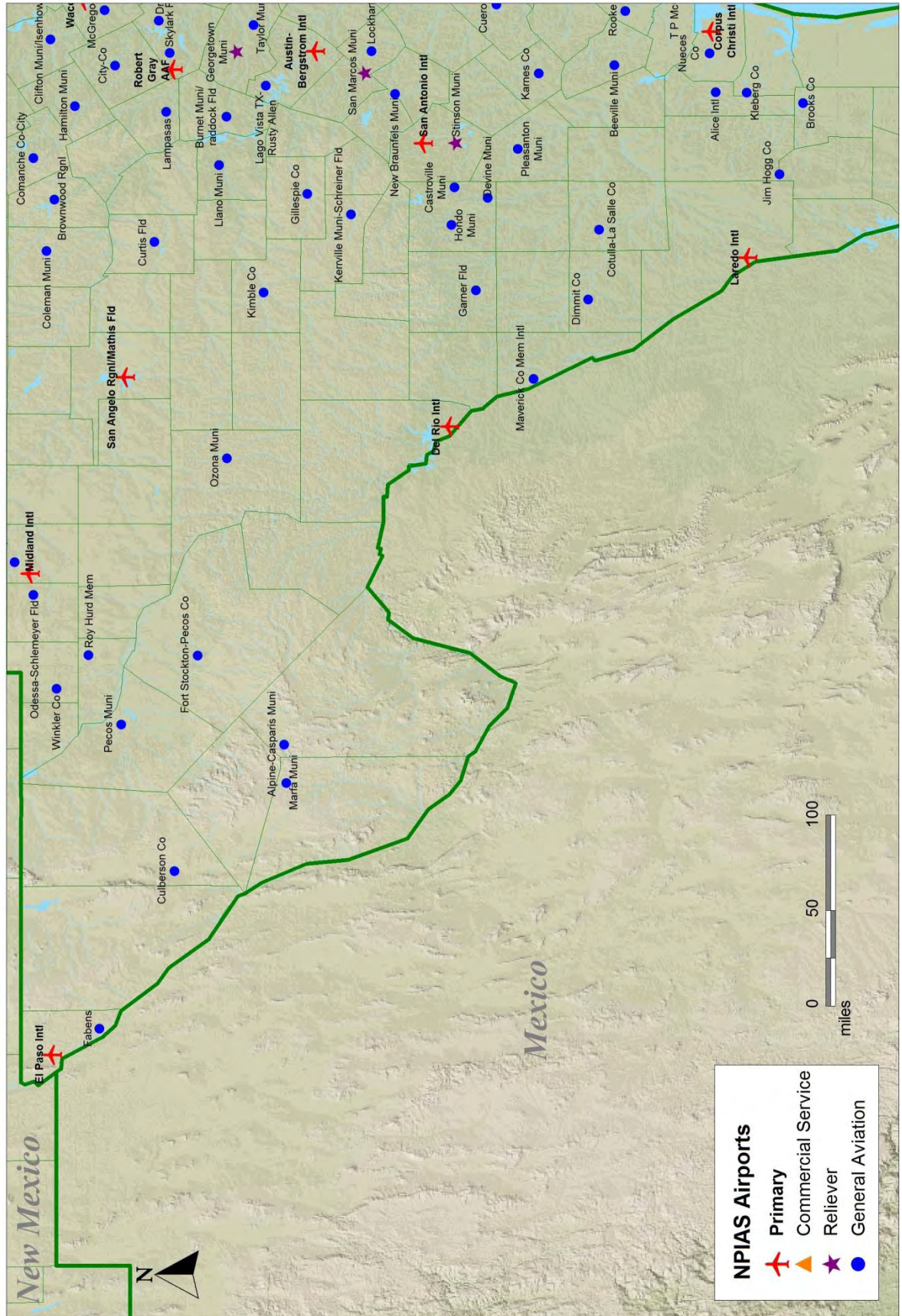
Airports: Amarillo Intl, Lubbock Intl, Midland Intl, El Paso Intl, Sheppard AFB/Mentia Falls Muni, Abilene Rgnl, San Angelo Rgnl/Mathis Fld, etc.

Counties: Garfield, Grant, Lincoln, Deuel, Cheyenne, Concho, Dallam, Deaf Smith, Donley, Fannin, Garza, Glasscock, Hutchinson, Jones, Kaufman, Kenton, Lamb, LeFlore, Logan, Love, Nowata, Oklahoma, Osage, Pottawatomie, Red, Rockwall, Stephens, Tulsa, Wagon Wheel, Wilbarger, etc.

Scale: 0 to 100 miles

North Arrow: N

Texas (South/Southwest)



B-54



NPIAS Airports

- Primary
- Commercial Service
- Reliever
- General Aviation

0 50 100 miles

Utah

