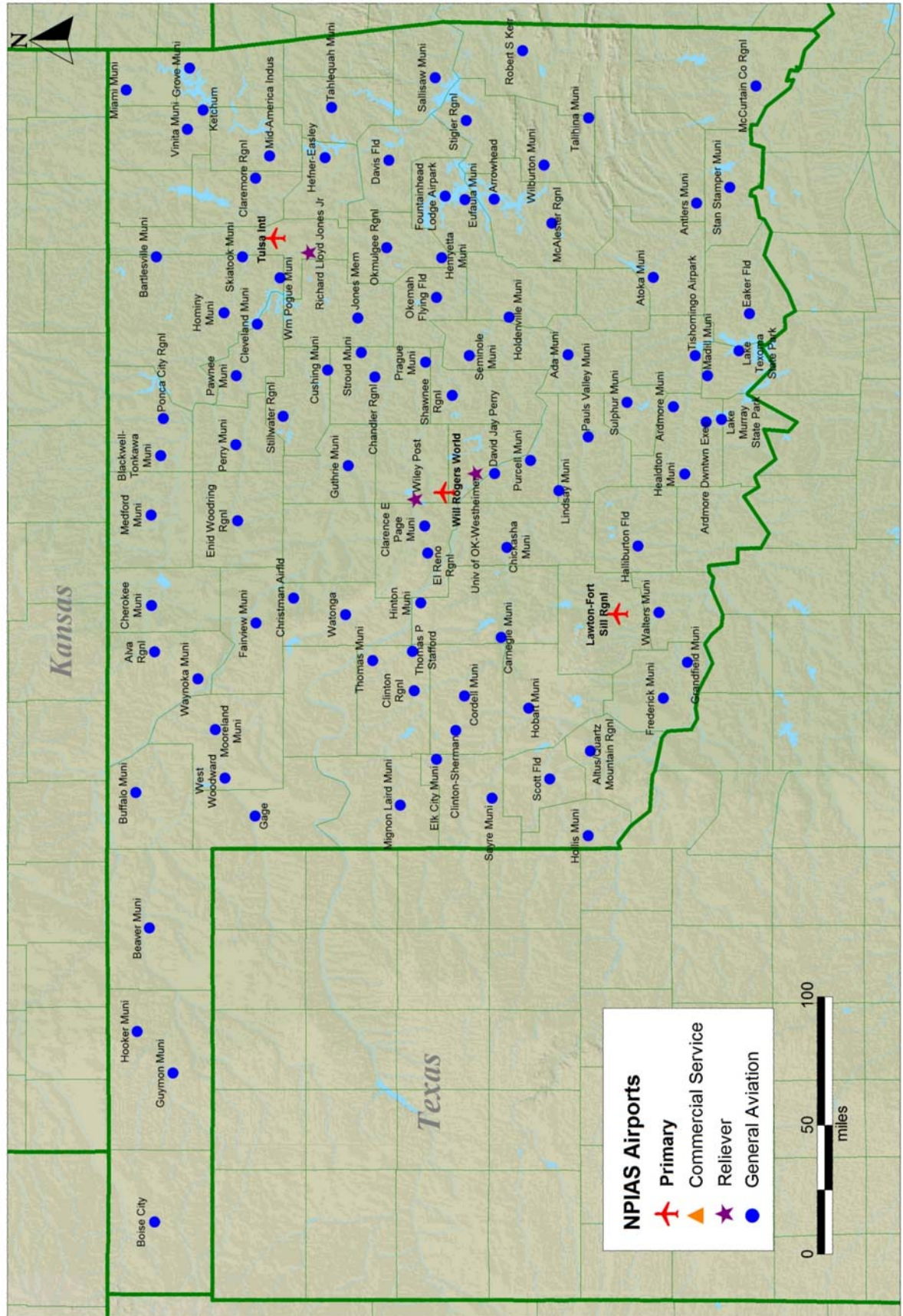


Oklahoma

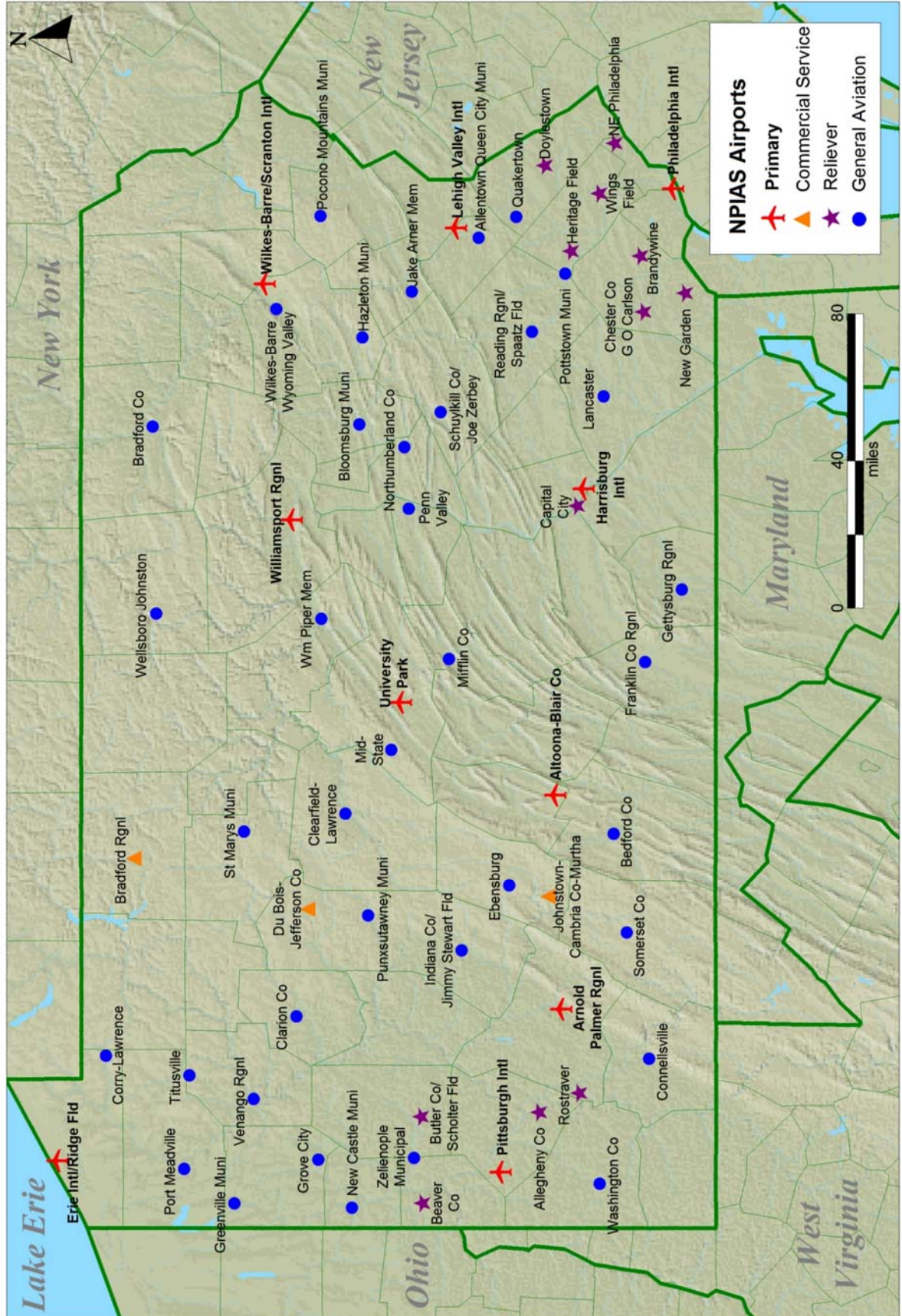


NPIAS Airports

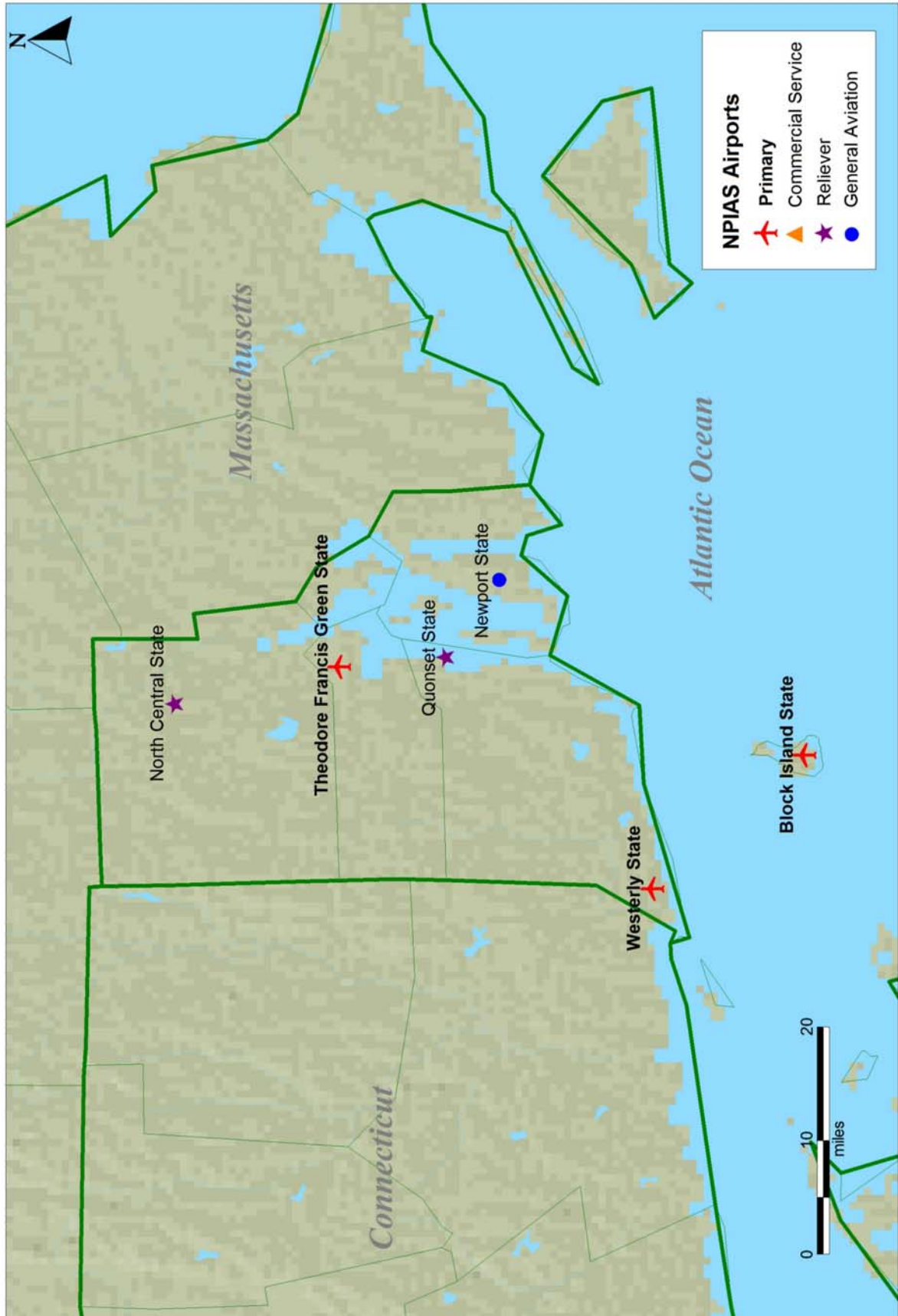
- Primary
- Commercial Service
- Reliever
- General Aviation

Map showing the Pacific Northwest region, including Washington, Oregon, Idaho, Nevada, and California. The map displays various airports categorized by type: Primary (red airplane icon), Commercial Service (orange triangle icon), Reliever (purple star icon), and General Aviation (blue dot icon). Key airports labeled include Portland Intl, McNary Fld, Klamath Falls, and others. The map also shows state boundaries, major roads, and a scale bar indicating distances in miles (0 to 100).

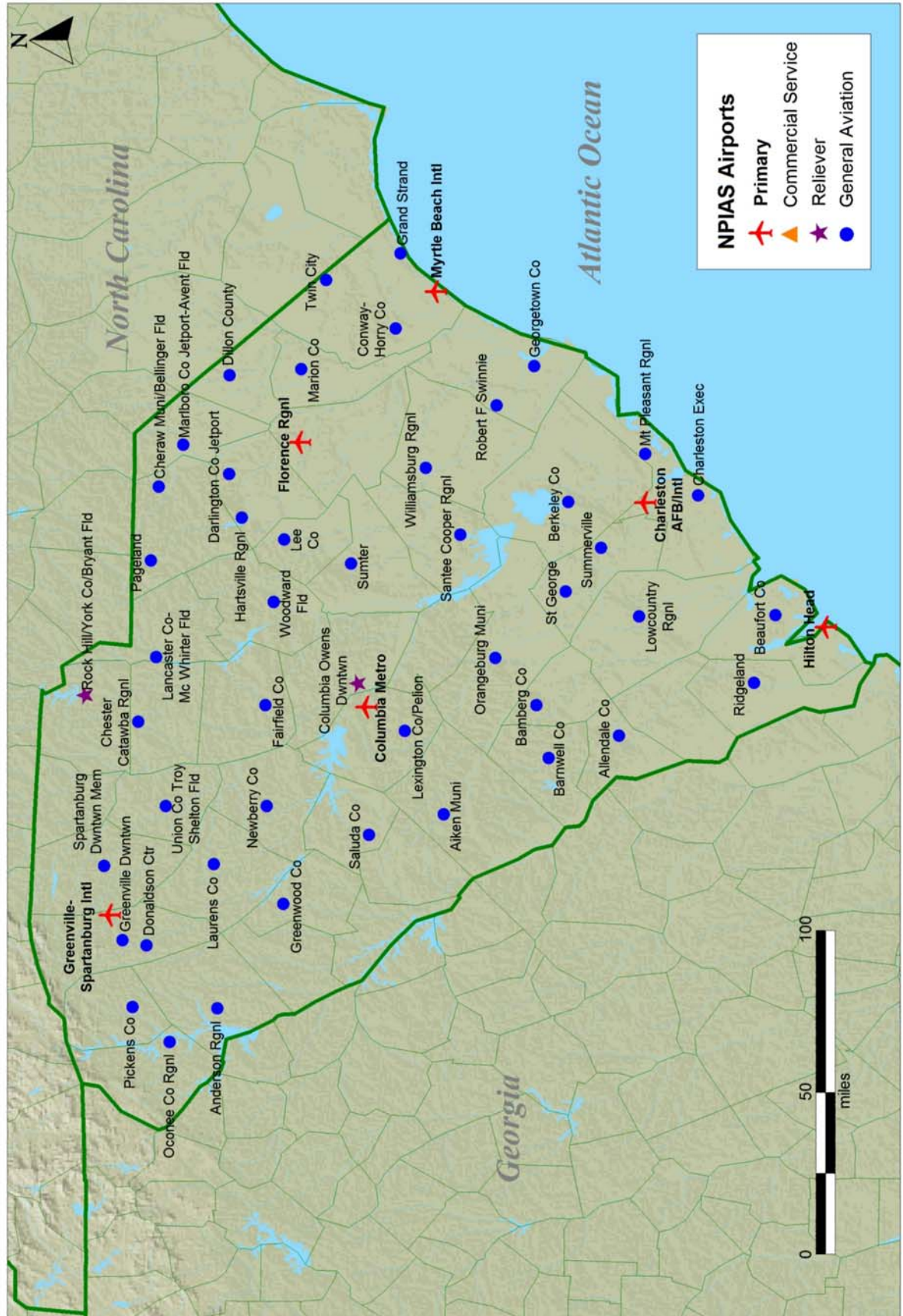
Pennsylvania



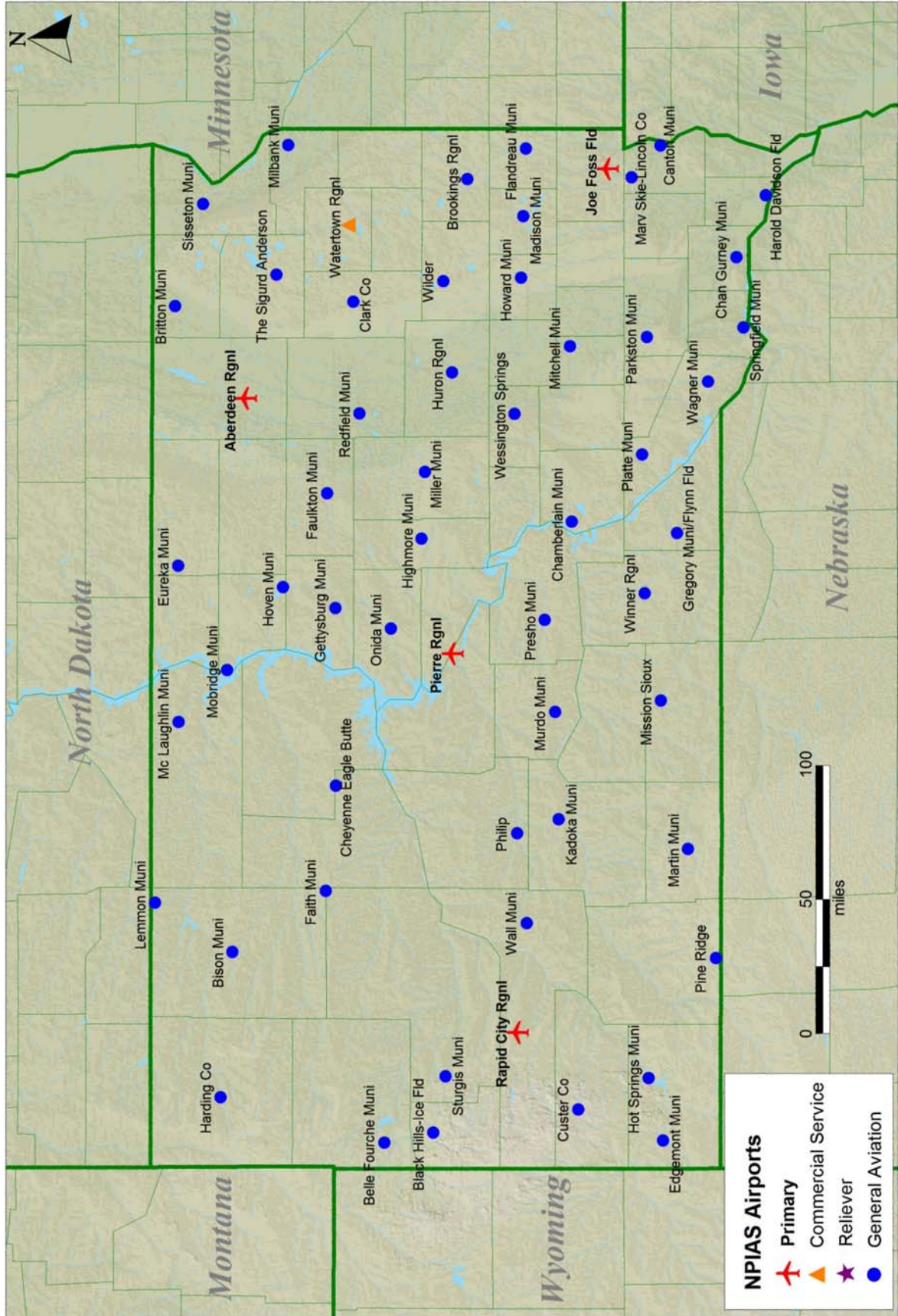
Rhode Island



South Carolina



South Dakota



NPIAS Airports

- Primary
- Commercial Service
- Reliever
- General Aviation

This map displays the locations of National Public Infrastructure Airport System (NPIAS) airports across Oklahoma and New Mexico. The legend identifies four types of airports: Primary (red airplane icon), Commercial Service (orange triangle icon), Reliever (purple star icon), and General Aviation (blue circle icon). Major international airports are highlighted with red airplane icons and labeled: Amarillo Intl, Lubbock Intl, Midland Intl, El Paso Intl, Sheppard AFB Wichita Falls Muni, and San Angelo Rgnl/Mathis Fld. The map also shows county boundaries, major roads, and geographical features like rivers and mountains. A scale bar indicates distances up to 100 miles, and a north arrow is present in the top left corner.

This map displays the locations of National Public Infrastructure Aviation System (NPIAS) airports across the state of New Mexico. The map is color-coded to show different types of airports: Primary (red airplane icon), Commercial Service (orange triangle icon), Reliever (purple star icon), and General Aviation (blue circle icon). Major interstate highways are shown as thick green lines, and the international border with Mexico is marked with a dashed line. A scale bar in miles (0, 50, 100) and a north arrow are located in the bottom right corner. The map includes labels for various counties and cities, as well as the names of several airports, including El Paso Intl, Midland Intl, San Angelo Rgnl/Matthis Fld, San Antonio Intl, and Laredo Intl.

[illegible]

NPIAS Airports

- Primary
- Commercial Service
- Reliever
- General Aviation

0 50 100 miles

Utah

