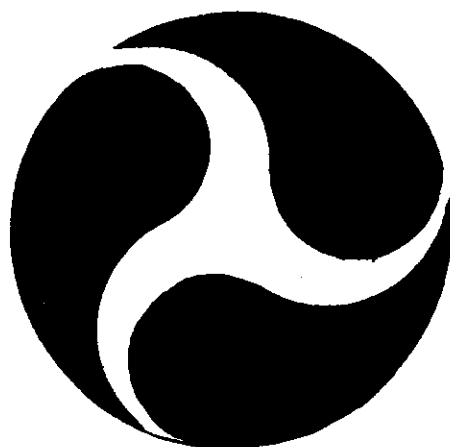


AC 8500-1

1993

**AEROMEDICAL CERTIFICATION
STATISTICAL HANDBOOK**



**U.S. DEPARTMENT OF TRANSPORTATION
FEDERAL AVIATION ADMINISTRATION**

**CIVIL AEROMEDICAL INSTITUTE
AEROMEDICAL CERTIFICATION DIVISION**



Table of Contents

<u>Section</u>	<u>Page</u>
I. AVIATION MEDICAL EXAMINER INFORMATION	1
A. Designated FAA Aviation Medical Examiners by Region	2
B. Medical Practice of Aviation Medical Examiners (Chart)	3
C. Regional Coverage of Aviation Medical Examiners Versus Civil Airmen	4
D. Aviation Medical Examiner Seminars - Date, Location and Attendance	5
E. Aviation Medical Examiner Seminars and Attendance	6
F. Active Aviation Medical Examiners Seminar Attendance by Region	7
G. Regional Aviation Medical Examiner Activity	8
H. Aviation Medical Examiner Summary Data	9
II. CERTIFICATION ACTIVITY	11
A. Airman Applications for Medical Certification (Chart)	12
B. Receipts of Medical Certificate Applications by Class	13
C. Medical Applications Processing by the Aeromedical Certification Division	14
D. Aeromedical Certification Division, Correspondence Unit Activity	15
E. Aeromedical Certification Division Computer Tape File Summary	16
F. Medical Certification Activity Summary	17
III. REFERRALS AND DENIALS	19
A. Distribution of Causes for Review by Major Category	20
B. Distribution of Causes for Review by Major and Minor Categories	21
C. Special Issuances and Denials (Table)	22

Table of Contents (Continued)

<u>Section</u>	<u>Page</u>
IV. GENERAL AIRMAN POPULATION DATA	23
A. Regional Distribution of Active Airmen by Class of Certificate and Effective Status	24
B. Active Airmen's State of Residence by Sex and Class of Certificate Issued	25
C. Age Distribution of Medically Certified Airmen (Chart)	27
D. Age Distribution of Medically Certified First Class Airmen (Chart)	28
E. Age Distribution of Medically Certified Second Class Airmen (Chart)	29
F. Age Distribution of Medically Certified Third Class Airmen (Chart)	30
G. Age Distribution of Active Airmen by Class and Sex (Table)	31
H. Age Distribution of Airline Pilots (Chart)	32
I. Age Distribution of Airline Pilots (Table)	33
J. Height Distribution of Active Airmen by Class and Sex	34
K. Weight Distribution of Active Airmen by Class and Sex	35
L. Active Airmen by Occupation, Class and Sex	36
M. Employers of Active Airmen by Class of Certificate Issued	37
V. MEDICAL CHARACTERISTICS OF THE AIRMAN POPULATION	39
A. Active Airmen by Number of Restrictions Carried, Class and Sex	40
B. Frequency of Restrictions Among Active Airmen by Class and Sex	41
C. Active Airmen with Defective Color Vision by Class and Sex	45
D. Active Airmen with Waivers by Class and Sex	46

SYMBOLS

Category not applicable	N/A
Data not available	--
Quantity zero	-
Quantity more than 0 but less than 0.05	0.0
More than	>
Less than	<

FOR ADDITIONAL INFORMATION ON DATA PRESENTED, please refer to the footnotes provided on the table or chart, or contact the office indicated in the source note.



SECTION I**AVIATION MEDICAL EXAMINER INFORMATION**

This section reflects the activities of the Aviation Medical Examiner Program during calendar year 1993 with some comparative data for previous years.

An Aviation Medical Examiner (AME) is a physician authorized by the Federal Aviation Administration (FAA) to perform airman physical examinations for issuance of FAA medical certificates. These physicians are designated according to the geographical distribution of airmen. There are also military facilities (installations) designated to perform FAA airman examinations of military personnel for issuance of second and third class certificates.

AME seminars are held in each region and at Oklahoma City's Civil Aeromedical Institute to acquaint these physicians with the regulations and procedures governing the issuance of FAA medical certificates.

Table I.A**DESIGNATED FAA AVIATION MEDICAL EXAMINERS BY REGIONS****1992-1993**

REGION	PERCENT OF 1993 TOTAL*	AVIATION MEDICAL EXAMINERS	
		1992	1993
Alaskan	1.6%	103	101
Central	6.6%	424	408
Eastern	12.1%	751	744
Great Lakes	14.6%	909	897
New England	3.6%	233	224
Northwest Mountain	10.5%	655	648
Southern	16.4%	1,017	1,012
Southwest	12.7%	774	781
Western Pacific	8.8%	565	545
SUBTOTAL	86.9%	5,431	5,360
Military **	7.2%	422	441
International	5.9%	342	362
TOTAL	100.0%	6,195	6,163

* The basis for percentage computations is total designations as of the end of calendar year 1993, i.e., U.S. and International designations represent one physician for each designation; whereas, Military designations represent one facility for each designation.

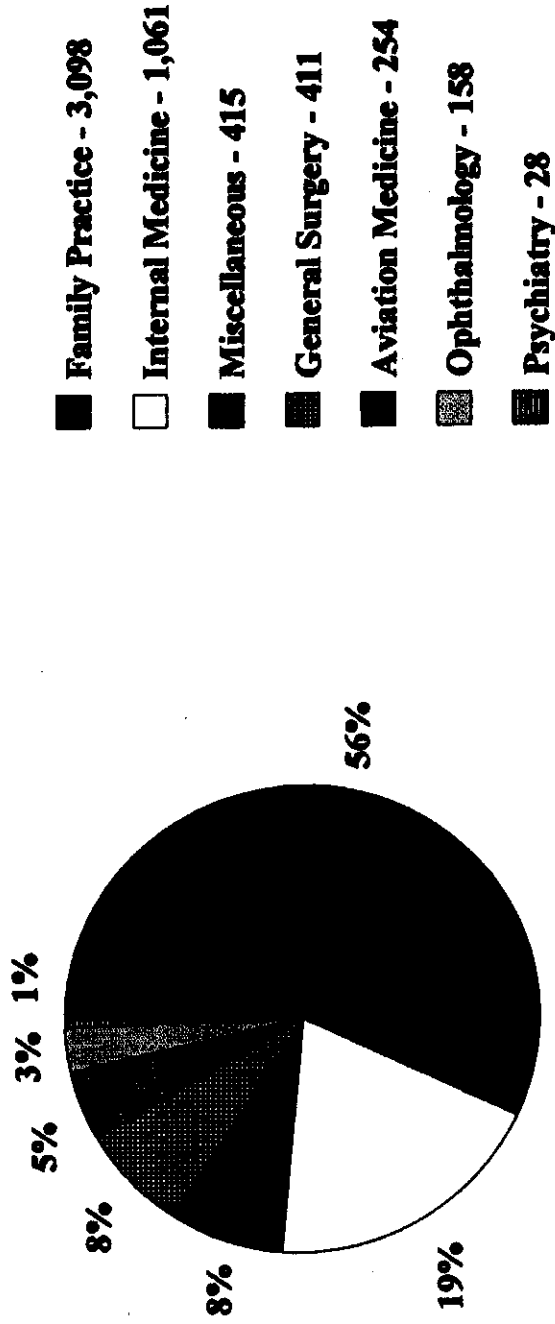
** Denotes military installation designations rather than individual physicians.

Source: Civil Aeromedical Institute, Aeromedical Education Division, Aviation Medical Examiner Program; RIS: AC 8500-2, AME Worklist by State (designated FAA Aviation Medical Examiners by Region and State).

FIGURE I.B

**MEDICAL PRACTICE OF AVIATION
MEDICAL EXAMINERS - 1993 ***

SPECIALTY & Number of AMEs



TOTAL (100%) = 5,722

* Based on United States and International Aviation Medical Examiners; Military not included.

Source: Civil Aeromedical Institute, Aeromedical Education Division, Aviation Medical Examiner Program; RIS: AC 8520-5, AME Specialty Summary by State.

Table I.C

**REGIONAL COVERAGE OF AVIATION MEDICAL EXAMINERS
VERSUS CIVIL AIRMEN
1993**

REGION	Active U.S. Civil Airman Population *	U.S. Non-Military AME Population **	Ratio AMEs To Airmen
Alaskan	9,009	101	1:89
Central	30,753	408	1:75
Eastern	77,899	744	1:105
Great Lakes	103,984	897	1:116
New England	28,549	224	1:127
Northwest Mountain	61,954	648	1:96
Southern	109,888	1,012	1:109
Southwest	71,564	781	1:92
Western Pacific	101,919	545	1:187
TOTAL	595,519	5,360	1:111

* Active U.S. Civil Airman Population figures are as of December 31, 1993; RIS: AC 8065-4, Examination Time Period Summary. Military and International not included.

** U.S. Non-Military AME Population figures are as of January 1, 1993; RIS: AC 8520-2, AME Worklist by State (Designated FAA Aviation Medical Examiners by Region and State). Military and International not included.

Source: Civil Aeromedical Institute, Aeromedical Education Division, Aviation Medical Examiner Program; and Aeromedical Certification Division, Program Support Branch.

Table I.D

**AVIATION MEDICAL EXAMINER SEMINARS
DATE, LOCATION AND ATTENDANCE
1993**

DATE	LOCATION	ATTENDANCE
February 1-5	Oklahoma City, OK	60
March 4-7	Tampa, FL	142
March 25-28	Des Moines, IA	35
April 15-18	Lake Tahoe, CA	113
May 10-14	Oklahoma City, OK	61
May 23-27	Toronto, CAN (AsMA)	196
July 15-18	Austin, TX	90
July 29-August 1	Pittsburgh, PA	93
August 19-22	Portland, OR	81
August 30-September 3	Oklahoma City, OK	68
September 23-26	Lexington, KY	92
October 13-17	Oklahoma City, OK (CAMA)	77
October 27-30	New Orleans, LA (SMA)	98
November 18-21	Phoenix, AZ	146
November 29-December 3	Oklahoma City, OK	66
TOTAL		1,418

Source: Civil Aeromedical Institute, Aeromedical Education Division, Aviation Medical Examiner Program.

Table I.E

**AVIATION MEDICAL EXAMINER SEMINARS AND ATTENDANCE
1960-1993**

DATE	SEMINARS	ATTENDANCE
1960	1	49
1961	16	1,031
1962	24	1,431
1963	13	1,153
1964	9	1,406
1965	10	1,596
1966	7	1,187
1967	11	1,281
1968	5	545
1969	7	970
1970	5	750
1971	10	1,521
1972	5	873
1973	4	806
1974	8	1,498
1975	13	1,633
1976	15	1,871
1977	12	1,309
1978	14	1,439
1979	16	1,733
1980	15	2,012
1981	13	1,477
1982	15	1,652
1983	17	1,523
1984	17	1,551
1985	15	2,033
1986	11	1,701
1987	13	1,573
1988	17	1,525
1989	16	1,550
1990	15	1,599
1991	15	1,472
1992	17	1,507
1993	15	1,418
TOTAL	416	46,675

Source: Civil Aeromedical Institute, Aeromedical Education Division, Aviation Medical Examiner Program.

Table I.F

**ACTIVE AVIATION MEDICAL EXAMINERS SEMINAR
ATTENDANCE BY REGION *
1993**

REGION	Total AMEs	One Seminar	More Than One Seminar	No Seminar Attendance
Alaskan	101	22	71	8
Central	408	55	353	0
Eastern	744	116	605	23
Great Lakes	897	162	733	2
New England	224	38	185	1
Northwest Mountain	648	126	522	1
Southern	1,012	166	846	1
Southwest	781	126	658	2
Western Pacific	545	70	473	3
International	362	128	189	45
TOTAL	5,722	1,009	4,635	86
Percent of Total	100.0	17.6	80.9	1.5

* Training data are obtained from computer listings of non-military Aviation Medical Examiners.

Source: Civil Aeromedical Institute, Aeromedical Education Division, Aviation Medical Examiners Program; RIS: AC 8520-6, AME Training Summary Report.

Table I.G

**REGIONAL AVIATION MEDICAL EXAMINER ACTIVITY *
1993**

REGION	AMEs Appointed	AMEs Reinstated	AMEs Separated	Total AMEs
Alaskan	3	1	5	101
Central	13	1	26	408
Eastern	23	3	34	744
Great Lakes	40	9	66	897
New England	6	1	15	224
Northwest Mountain	32	15	45	648
Southern	34	13	58	1,012
Southwest	39	9	50	781
Western Pacific	17	6	48	545
International	22	3	3	362
TOTAL	229	61	350	5,722

* Military installations not included.

Source: Civil Aeromedical Institute, Aeromedical Education Division, Aviation Medical Examiners Program.

Table I.H
AVIATION MEDICAL EXAMINER SUMMARY DATA *
1993

A.	Number of Designated U.S. Non-Military Aviation Medical Examiners	5,722
B.	Number of Designated International Aviation Medical Examiners	362
C.	Number of Designated Military Aviation Medical Examiners (Installations)	441
D.	Ratio of U.S. Non-Military Aviation Medical Examiners to U.S. Civil Airmen	1:111
E.	Percentage of Non-Military Aviation Medical Examiners Who Are Qualified Pilots	49%
F.	Number of Non-Military Aviation Medical Examiners Who Participate in Accident Investigation	126
G.	Percentage of Non-Military Aviation Medical Examiners Who Have Attended One Seminar	18%
H.	Percentage of Non-Military Aviation Medical Examiners Who Have Attended More Than One Seminar	81%
I.	Percentage of Non-Military Aviation Medical Examiners Who Have Not Attended A Seminar	1%
J.	Total Number of Seminars Conducted in 1993	15
K.	Total Attendance of Aviation Medical Examiners at Seminars	1,418

* An Aviation Medical Examiner may have been classified in more than one of these categories.

Source: Civil Aeromedical Institute, Aeromedical Education Division, Aviation Medical Examiner Program.



SECTION II**CERTIFICATION ACTIVITY**

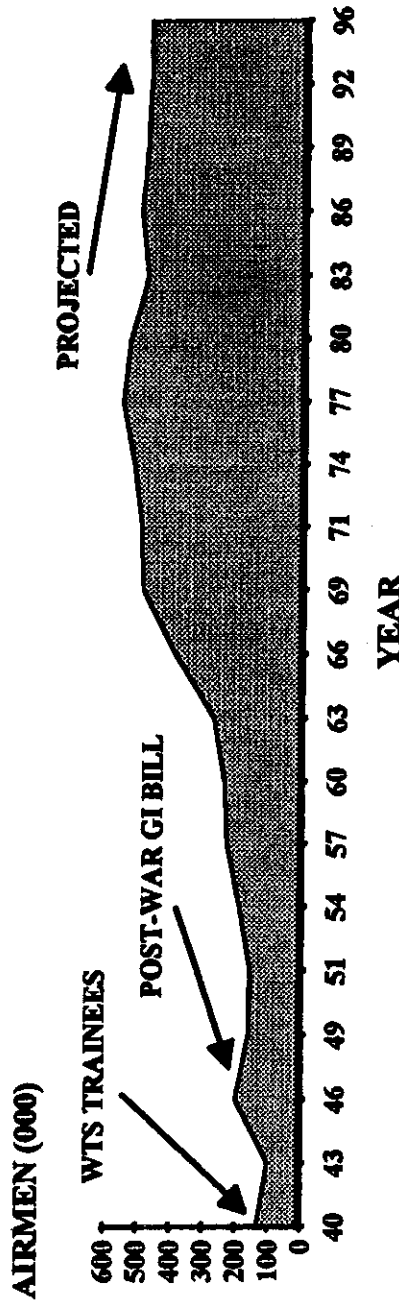
The Aeromedical Certification Division is the central screening facility and repository within the Federal Aviation Administration for collection, investigation, adjudication, and analysis of medical data.

Activities of the Aeromedical Certification Division are presented in this section. Data are presented by calendar year and reflect workload in the certification area.

FIGURE II.A

AIRMEN APPLICATIONS FOR MEDICAL CERTIFICATION

1940 - 1993 Projected to 1996



Year	1940	1941	1942	1943	1944	1945	1946	1947	1948	1949	1950	1951	1952	1953	1954	1955
Applications	134.4	172.2	161.6	102.7	113.8	154.6	202.1	289.6	233.4	162.5	144	157.4	145.7	133.5	160.6	168.6
Percentage*	83.5%	+28.1%	-6.2%	-36.4%	+10.8%	+35.9%	+30.7%	+43.3%	-19.4%	-30.4%	-11.4%	+9.3%	-7.4%	-8.4%	+20.3%	+5.0%
Year	1956	1957	1958	1959	1960	1961	1962	1963	1964	1965	1966	1967	1968	1969	1970	1971
Applications	181.7	229.6	217.9	255.6	237.5	237.3	254.1	271.8	294.7	330.6	387.5	427.6	465.9	487.7	487.7	493.1
Percentage*	+7.8%	+26.4%	-5.1%	+17.5%	-7.1%	-0.1%	+7.1%	+7.0%	+8.4%	+12.2%	+17.2%	+10.3%	+9.0%	+4.7%	+0.0%	+1.1%
Year	1972	1973	1974	1975	1976	1977	1978	1979	1980	1981	1982	1983	1984	1985	1986	1987
Applications	494.7	521.7	515.4	519.2	542.1	550.2	565.5	590.2	529.1	529.4	463.2	477.9	463.6	479.8	499.0	470.2
Percentage*	+0.3%	+5.3%	-1.2%	+0.7%	+4.4%	+1.5%	+2.8%	-2.7%	-3.8%	+0.1%	-12.5%	+3.2%	-3.0%	+3.5%	+4.0%	-5.8%
Year	1988	1989	1990	1991	1992	1993	1994	1995	1996	1997	1998	1999	2000	2001	2002	2003
Applications	466.3	481.2	480.9	494.6	473.9	456.0	460.6	465.2	469.8							
Percentage*	-0.8%	+3.2%	-0.1%	+2.8%	-4.2%	-3.8%	+1.0%	+1.0%	+1.0%							

*Percentage of increase or decrease over previous year. Projected receipts based on 1% increase each calendar year.
Source: Civil Aeromedical Institute, Aeromedical Certification Division, Program Support Branch.

Table II.B

RECEIPTS OF MEDICAL CERTIFICATE APPLICATIONS BY CLASS *
1965-1993

Calendar Year	Total	First Class	Percent of Total	Second Class	Percent of Total	Third Class	Percent of Total
1965	330,617	52,006	15.7%	109,600	33.2%	169,011	51.1%
1966	387,537	73,903	19.1%	124,593	32.1%	189,041	48.8%
1967	427,596	80,474	18.8%	143,458	33.6%	203,664	47.6%
1968	465,929	87,408	18.8%	173,139	37.2%	205,382	44.0%
1969	478,700	90,666	18.9%	178,699	37.3%	209,335	43.8%
1970	487,700	94,419	19.4%	189,276	38.8%	204,005	41.8%
1971	493,145	91,478	18.5%	204,853	41.5%	196,814	40.0%
1972	494,700	86,573	17.5%	205,597	41.6%	202,530	40.9%
1973	521,700	93,384	17.9%	220,679	42.3%	207,637	39.8%
1974	515,400	91,741	17.8%	214,922	41.7%	208,737	40.5%
1975	519,200	91,379	17.6%	224,814	43.3%	203,007	39.1%
1976	542,159	93,793	17.3%	230,418	42.5%	217,948	40.2%
1977	550,243	97,393	17.7%	230,552	41.9%	222,298	40.4%
1978	565,534	105,755	18.7%	228,476	40.4%	231,303	40.9%
1979	550,188	111,138	20.2%	212,373	38.6%	226,677	41.2%
1980	529,051	118,507	22.4%	197,865	37.4%	212,679	40.2%
1981	529,418	128,649	24.3%	183,708	34.7%	217,061	41.0%
1982	463,241	110,714	23.9%	155,186	33.5%	197,341	42.6%
1983	477,905	114,219	23.9%	171,090	35.8%	192,596	40.3%
1984	463,617	109,877	23.7%	159,948	34.5%	193,792	41.8%
1985	479,849	126,680	26.4%	154,511	32.2%	198,658	41.4%
1986	474,392	133,304	28.1%	146,113	30.8%	194,975	41.1%
1987	470,208	147,175	31.3%	138,241	29.4%	184,792	39.3%
1988	466,326	147,359	31.6%	130,571	28.0%	188,396	40.4%
1989	481,168	162,635	33.8%	128,953	26.8%	189,580	39.4%
1990	480,922	169,765	35.3%	124,559	25.9%	186,598	38.8%
1991	494,612	181,523	36.7%	127,115	25.7%	185,974	37.6%
1992	473,884	177,233	37.4%	121,788	25.7%	174,863	36.9%
1993	455,995	170,086	37.3%	118,559	26.0%	167,350	36.7%

* The 1965 class distributions were achieved by applying percentages based on card counts of applications performed during 1965 to the total receipts for the year. Class distributions for 1966 through 1992 were based on percentages compiled from the Record of Physical Examinations Computer Submission Summary, AC 8500-3.

Source: Civil Aeromedical Institute, Aeromedical Certification Division, Program Support Branch, RIS: AC 8500-3, Record of Physical Examinations Computer Submission Summary Report.

Table II.C

**MEDICAL APPLICATIONS PROCESSING BY THE
AEROMEDICAL CERTIFICATION DIVISION
1993**

Month	Applications Received	Applications Coded for Computer Screening	Applications Screened by Computer *	Applications Requiring Manual Review **	Applications Intra-Office Transmitted **
January	32,993	30,756	30,048	12,019	88
February	32,354	31,154	32,922	13,169	99
March	41,004	39,258	38,437	15,375	103
April	38,366	38,333	38,603	15,441	80
May	38,967	39,167	38,067	15,227	71
June	43,675	38,875	40,875	16,350	87
SUBTOTAL	227,359	217,543	218,952	87,581	528
July	40,605	36,705	35,505	14,202	83
August	44,480	48,780	42,280	16,912	64
September	36,796	40,696	45,396	18,158	68
October	35,965	35,565	38,165	15,266	69
November	36,695	36,595	33,995	13,598	89
December	34,095	32,995	35,995	14,398	98
SUBTOTAL	228,636	231,336	231,336	92,534	471
TOTAL	455,995	448,879	450,288	180,115	999

* Figures reflect the number of submissions to the computer rather than the number of applications because an application may have to be submitted to the computer more than once before it is accepted.

** Total applications rejected for any reason is presently 40% of applications screened by computer.

*** Figures include applications transmitted to the regions and to the Federal Air Surgeon for certification or review. Represents 0.4% of the applications received.

Source: Civil Aeromedical Institute, Aeromedical Certification Division, Program Support Branch; RIS: AC 8065-3, Aeromedical Certification Processing Summary.

Table II.D

**AEROMEDICAL CERTIFICATION DIVISION
CORRESPONDENCE SECTION ACTIVITY
1993**

Activity	Frequency	Subtotal	Percent of Total
<u>Certification</u>			
Issued and Corrected Certificates	21,258		
Eligibility Letters	33,179		
Issued or Duplicate Waivers	8,103		
		62,540	54.1%
<u>Further Action Necessary</u>			
Information Requested	37,071		
Medical Flight Test Authorization	4,496		
		41,567	36.0%
<u>Telegram Replies to Airmen/Agency Offices</u>			
	1,089	1,089	0.9%
<u>Denial Letters</u>			
Final Denials	305		
General Denials	1,969		
Failure to Provide Denials	1,566		
Other Denial Correspondence	2,503		
		6,343	5.5%
<u>Miscellaneous Correspondence*</u>			
AME Error Letters	111		
Other Miscellaneous*	3,950		
		4,061	3.5%
TOTAL		115,600	100.0%

* Includes refund letters, charge letters, second request letters, requests for return of medical certificate, cover letters, replies to airmen and physicians inquiries, and other miscellaneous letters.

Source: Civil Aeromedical Institute, Aeromedical Certification Division, Program Support Branch; RIS: AC 8065-3, Aeromedical Certification Processing Summary.

Table II.E

**CONSOLIDATED
AEROMEDICAL CERTIFICATION DIVISION COMPUTER TAPE FILE SUMMARY
AS OF: DECEMBER 31, 1992**

Action	Time Lapse Since Date of Last Examination					Total
	< 7 Months	< 13 Months	< 25 Months	Subtotal	25-36 Months	
<u>Certified</u>						
First Class	87,654	38,013	22,009	147,676	12,833	N/A
Second Class	58,884	54,280	60,271	173,435	30,717	N/A
Third Class	91,223	73,822	160,951	325,996	78,691	N/A
SUBTOTAL	237,761	166,115	243,231	647,107	122,241	N/A
<u>Non-Certified</u>						
Pending	2,673	1,183	2,439	6,295	1,791	N/A
Denied	1,528	1,749	3,583	6,860	3,516	N/A
SUBTOTAL	4,201	2,932	6,022	13,155	5,307	N/A
<u>Link*</u>	N/A	N/A	N/A	N/A	N/A	544,710
TOTAL	241,962	169,047	249,253	660,262	127,548	544,710
EFFECTIVE STATUS TOTAL		Class I = 87,654		Class II = 151,177		Class III = 408,276

* Abbreviated records maintained on individuals having significant pathology who have not had a physical examination in the past 36 months. These airmen may or may not have been certified.

Source: Civil Aeromedical Institute, Aeromedical Certification Division, Program Support Branch.

Table II.F
MEDICAL CERTIFICATION ACTIVITY SUMMARY
1991-1993

Activity	CY 1993	CY 1992	CY 1991
Applications for Medical Certification	455,995	473,884	494,612
New Applications for First Class Medical Certificates*	-	7,236	7,474
New Applications for Second Class Medical Certificates*	-	12,403	12,478
New Applications for Third Class Medical Certificates*	-	51,123	51,207
First Class Combined Student/Medical Certificates	1,715	1,769	5,122
Second Class Combined Student/Medical Certificates	3,895	4,151	10,887
Third Class Combined Student/Medical Certificates	22,102	22,147	69,206
Electrocardiograms Received for First Class Pilots	67,105	70,096	67,090
Incoming Correspondence **	80,243	77,766	102,408
Outgoing Correspondence	126,966	126,883	126,312
Applications Containing Medical or Clerical Problems	180,115	190,439	206,226
Number of Abnormalities Detected in Electrocardiograms	13,421	14,019	13,418
Number of First Class Active Airmen with Pathology Records	34,579	34,414	33,133
Number of Second Class Active Airmen with Pathology Records	54,794	54,748	52,600
Number of Third Class Active Airmen with Pathology Records	81,933	78,850	73,440

(Continued)

Table II.F (Continued)**MEDICAL CERTIFICATION ACTIVITY SUMMARY
1991-1993**

- * An application receipt is considered a "new application" if the airman has made no indication of previous FAA physical examination and if total flying time equals last six months flying time. Of examinations performed in 1992, 1,215 or 1.7% new applications were denied, 693 or 1.0% were pending, and 67,711 or 97.3% were issued for a total of 69,619 new applications.

The "Record of Physical Examinations Computer Submissions Summary Report," AC 8500-3, was modified during 1969 to reflect the final certification action for each application performed during the previous year. The report is produced in August of each year and reflects data for the previous year.

- ** Includes information requested by the Aeromedical Certification Division and inquiries from airmen or regional offices.

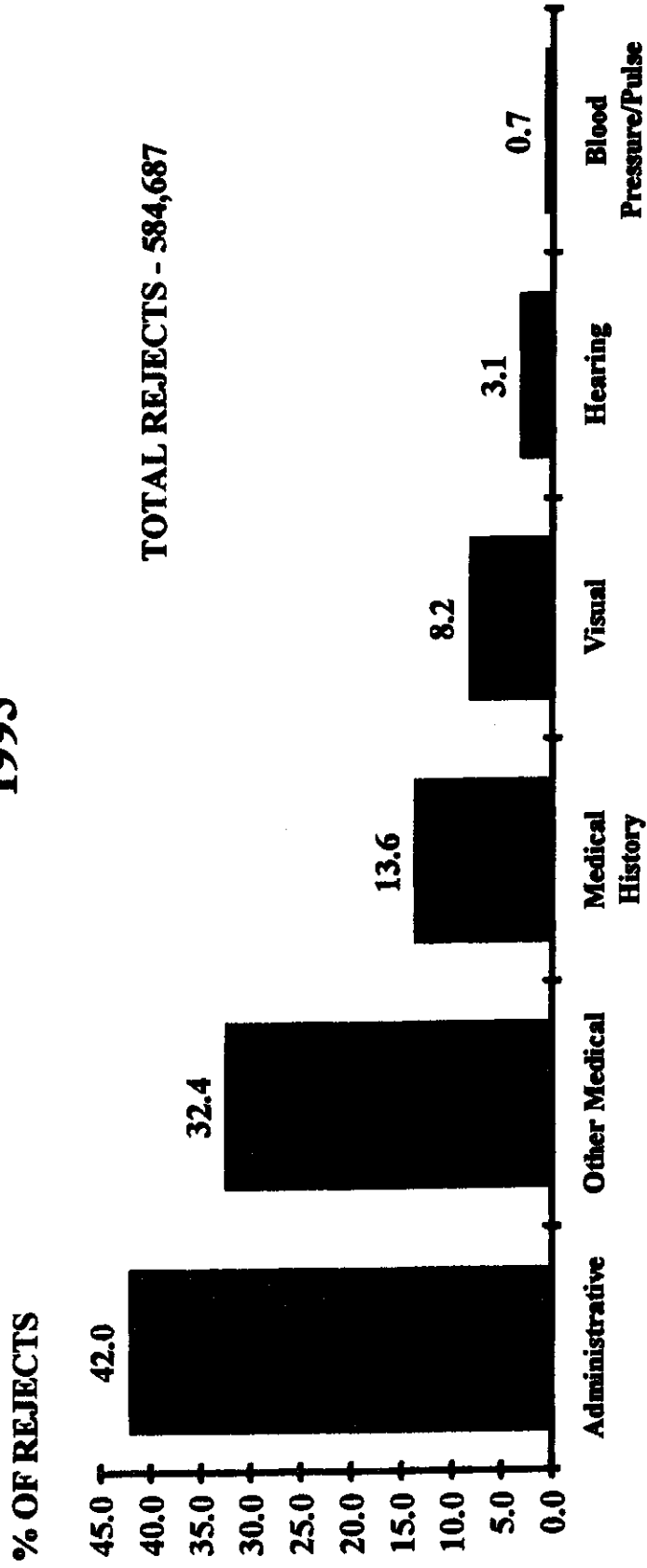
Source: Civil Aeromedical Institute, Aeromedical Certification Division, Program Support Branch; RIS: AC 8500-1, 8500-3, and 8065-3.

SECTION III**REFERRALS AND DENIALS**

This section is concerned with those applications for medical certification which require manual review. These data are presented by calendar year and reflect the number of rejects, either medical or administrative, generated when the application enters the automated system. Also included are data reflecting the number of special issuances and denials.

FIGURE III.A

**DISTRIBUTION OF CAUSES FOR
REVIEW BY MAJOR CATEGORY
1993**



Source: Civil Aeromedical Institute, Aeromedical Certification Division, Program Support Branch; RIS: AC 8500-3, Aeromedical Certification Processing Summary.

Table III.B

**DISTRIBUTION OF CAUSES FOR REVIEW BY MAJOR AND MINOR CATEGORIES
1993**

Reject	Major Category Totals	Percent	Minor Categories	Percent
Administrative	246,537	42.0		
No NDR Authorization			1,332	0.2
AME Number Rejects			4,589	0.8
No Ticket Flag Set			72,061	12.3
Previous Exam Has No Ticket Flag			4,370	0.7
Clerical Reject			6,801	1.2
Waiver Rejects			1,350	0.2
Re-Submit Exam to Computer			3,165	0.5
Date of ECG Rejects			5,374	0.9
No Match Between New and Previous Exams			2,604	0.4
Discrepancy in Name/DOB			12,464	2.1
Discrepancy in Social Security Number			6,856	1.2
Other*			125,571	21.5
Visual	47,567	8.2		
Distant Vision			30,306	5.2
Near Vision			13,299	2.3
Field of Vision			468	0.1
Color Vision			3,494	0.6
Other Medical Conditions	188,580	32.4		
Current Exam Pending/Denied			14,792	2.6
Urinalysis			3,280	0.6
Pathology Codes			85,059	14.5
Abnormalities (Items 25-48)			2,769	0.5
Medication			63,071	10.8
Restrictions			19,609	3.4
Medical History	79,409	13.6		
Previous Exam Special Case			429	0.1
Medical History			54,741	9.4
Previous Exam Pending/Denied			2,683	0.5
Previous Exam Exemption/Special Issuance Case			4,170	0.7
Input Exam Exemption/Special Issuance Case			1,332	0.2
Follow-up Material Requested			11,964	2.0
Current Information with Previous Record			2,043	0.3
Previous Exam Sent to Washington or Region/ECG Pending			313	0.1
Follow-up Not Required This Exam			1,734	0.3
Hearings	18,338	3.1		
Hearing			18,338	3.1
Blood Pressure/Pulse	4,256	0.7		
Blood Pressure			2,986	0.5
Pulse			1,270	0.2
TOTAL REJECT MESSAGES	584,687	100.0		

* Rejects resulting from validity checks against established edit criteria for height, weight, and address; rejects for certificates not issued due to class, no ticket flag, or bad address; and pathology number assigned rejects.

Source: Civil Aeromedical Institute, Aeromedical Certification Division, Program Support Branch; RIS: AC 8065-3, Aeromedical Certification Processing Summary.

Table III.C
SPECIAL ISSUANCES AND DENIALS
As of: December 31, 1993

Category Issuance/Denial	First Class	Second Class	Third Class	Total
<u>Issuances</u>				
NTSB Issuance	4	4	4	12
Special Issuance by AAM-300	814	407	2,689	3,910
Special Issuance by AAM-1	392	147	320	859
Special Issuance by RFS	1	17	70	88
Total Special Issuances	1,211	575	3,083	4,869
<u>Denials</u>				
Final Denials by AAM-300	47	90	558	695
Final Denials by AAM-1	33	4	11	48
Final Denials by RFS	-	-	7	7
Total Denials	80	94	576	750

* Figures include those cases coded under special issuances or denials on active master file.

Source: Civil Aeromedical Institute, Aeromedical Certification Division, Program Support Branch; RIS: AC 8065-1, Pathology Code Summary.

SECTION IV**GENERAL AIRMAN POPULATION DATA**

This section reflects general data concerning the active airman population. The data presented are as of December 31, 1993, and cover the preceding 25 months. The 25-month time period was used to describe the active airman population because a medically certified airman is considered "active" for a maximum of 25 months after his/her last FAA physical examination, i.e., regardless of the class of medical certificate issued, it is valid for third class purposes for a period of time up to 25 months. Those airmen who have allowed their medical certification to lapse into a time period greater than 25 months would be considered "inactive" airmen.

Data are presented by class of medical certificate issued and do not include applications pending or denied. Table IV.A presents data by "effective status" of medical certification. This refers to the time lapse since the certificate was issued as opposed to the class issued. Present FAA regulations stipulate that air transport pilots must be first class medically certified at six-month intervals, commercial pilots must be second class medically certified annually, and general aviation airmen must obtain third class medical certification every two years. Thus, an airman may be first or second class medically certified and the time lapse since examination would reduce the "effective status" to a lower class.

Table IV.A
REGIONAL DISTRIBUTION OF ACTIVE AIRMEN BY CLASS OF CERTIFICATE AND EFFECTIVE STATUS*
As of: December 31, 1993

Region	First Class			Second Class			Third Class			Total Active Airmen			
	First Class Certified	Effective Status (Class)**		Second Class Certified	Effective Status (Class)**		Third Class Certified	Effective Status (Class)**		Total Airmen Certified	Percent of Total Airmen	Effective Status (Class)**	
		1	2		3	2		3	1			2	3
Alaskan	1,531	900	451	2,938	2,074	864	4,540	4,540	9,009	1.4	900	2,525	5,584
Central	4,182	2,577	1,055	8,031	5,417	2,614	18,540	18,540	30,753	4.8	2,577	6,472	21,704
Eastern	16,899	10,024	4,442	19,002	12,539	6,463	41,998	41,998	77,899	11.9	10,024	16,981	50,894
Great Lakes	20,580	12,320	5,300	24,707	16,483	8,224	58,697	58,697	103,984	16.1	12,320	21,783	69,881
New England	6,236	3,969	1,496	7,044	4,625	2,419	15,269	15,269	28,549	4.4	3,969	6,121	18,459
Northwest-Mountain	14,621	9,007	3,672	15,806	10,436	5,370	31,527	31,527	61,954	9.6	9,007	14,108	38,839
Southern	30,466	18,540	7,863	27,374	18,371	9,003	52,048	52,048	109,888	17.0	18,540	26,234	65,114
Southwest	17,611	10,760	4,582	20,190	13,826	6,364	33,763	33,763	71,564	11.1	10,760	18,408	42,396
Western-Pacific	21,818	13,198	5,489	24,841	16,474	8,367	55,260	55,260	101,919	15.7	13,198	21,963	66,758
U.S. TOTAL	133,944	81,295	34,350	149,933	100,245	49,688	311,642	311,642	595,519	92.0	81,295	134,595	379,629
Military***	213	99	71	15,713	8,454	7,259	6,114	6,114	22,040	3.4	99	8,525	13,416
International	13,519	6,260	3,592	7,789	4,465	3,324	8,240	8,240	29,548	4.6	6,260	8,057	15,231
TOTAL	147,676	87,654	38,013	173,435	113,164	60,271	325,996	325,996	647,107	100.0	87,654	151,177	400,376
Percent of Total Certified Airmen	(22.8)			(26.5)			(50.4)		(100.0)				

* Figures are based on a 25-month summary from the computer tape files; only certified airmen are included.

** Refers to the time lapse since the certificate was issued as opposed to the class issued. Present FAA regulations stipulate that air transport pilots must be first class medically certified at six-month intervals, commercial pilots must be second class medically certified annually, and general aviation airmen must obtain third class medical certification every two years. Thus, an airman may be first or second class medically certified and the time lapse since examination would reduce the "effective status" to a lesser class.

*** Military airmen were tabulated on the basis of the physical examination being performed at a military examining facility.

Source: Civil Aeromedical Institute, Aeromedical Certification Division, Program Support Branch; RJS: AC 8065-4, Examination Time Period Summary.

Table IV.B

**ACTIVE AIRMEN'S STATE OF RESIDENCE
BY SEX AND CLASS OF CERTIFICATE ISSUED***
As of: December 31, 1993

State	First Class		Second Class		Third Class		Total Airmen	
	Male	Female	Male	Female	Male	Female	Male	Female
Alabama	900	18	2,209	64	3,842	258	6,951	340
Alaska	1,464	62	2,776	162	4,093	447	8,333	671
Arizona	3,728	190	3,299	216	6,055	585	13,082	991
Arkansas	564	19	1,706	35	2,764	173	5,034	227
California	14,448	781	18,297	1,014	41,700	3,738	74,445	5,533
Colorado	5,032	301	3,593	235	5,865	586	14,490	1,122
Connecticut	2,068	102	1,657	81	3,285	273	7,010	456
Delaware	319	16	383	19	667	40	1,369	75
District of Columbia	74	6	107	10	242	32	423	48
Florida	12,928	576	10,845	506	17,607	1,598	41,380	2,680
Georgia	5,895	125	3,353	122	7,048	504	16,296	751
Hawaii	997	65	662	53	628	46	2,287	164
Idaho	473	12	1,194	46	2,419	197	4,086	255
Illinois	5,266	325	5,285	340	10,837	804	21,388	1,469
Indiana	1,855	95	2,560	113	6,473	411	10,888	619
Iowa	551	16	1,582	59	3,947	242	6,080	317
Kansas	972	30	2,319	96	4,646	364	7,937	490
Kentucky	1,462	52	1,317	46	2,947	198	5,726	296
Louisiana	1,310	35	2,289	70	2,788	177	6,387	282
Maine	461	14	797	38	1,953	136	3,211	188
Maryland	1,573	66	2,002	107	4,438	446	8,013	619
Massachusetts	1,642	88	2,586	152	5,489	461	9,717	701
Michigan	2,660	135	4,127	236	10,009	749	16,796	1,120
Minnesota	4,107	276	3,216	165	7,595	533	14,918	974
Mississippi	545	16	1,292	29	1,974	122	3,811	167
Missouri	2,048	59	2,681	123	6,190	498	10,919	680
Montana	368	10	1,102	41	1,982	158	3,452	209
Nebraska	489	16	1,131	33	2,477	176	4,097	225
Nevada	1,521	62	1,206	68	2,261	217	4,988	347
New Hampshire	1,329	48	935	65	1,775	152	4,039	265
New Jersey	2,636	99	2,628	162	6,305	469	11,569	730
New Mexico	675	34	1,135	72	2,004	161	3,814	267
New York	3,426	173	4,664	210	10,542	814	18,632	1,197
North Carolina	3,225	138	2,978	111	6,485	458	12,688	707
North Dakota	598	37	776	25	1,285	70	2,659	132
Ohio	3,058	139	4,422	235	10,664	818	18,144	1,192
Oklahoma	1,304	57	2,916	143	4,437	374	8,657	574
Oregon	1,067	60	2,442	135	5,636	455	9,145	650
Pennsylvania	4,281	214	4,487	269	9,590	700	18,358	1,183
Rhode Island	210	8	328	21	727	73	1,265	102
South Carolina	1,075	31	1,386	37	3,077	189	5,538	257
South Dakota	246	10	664	17	1,230	77	2,140	104
Tennessee	3,243	111	2,829	146	5,286	364	11,358	621
Texas	13,205	400	11,420	397	19,294	1,591	43,919	2,388

(Continued)

Table IV.B (Continued)

**ACTIVE AIRMEN'S STATE OF RESIDENCE
BY SEX AND CLASS OF CERTIFICATE ISSUED***
As of: December 31, 1993

State	First Class		Second Class		Third Class		Total Airmen	
	Male	Female	Male	Female	Male	Female	Male	Female
Utah	1,616	39	1,270	54	2,656	177	5,542	270
Vermont	255	10	353	29	856	89	1,464	128
Virginia	3,538	140	3,127	178	5,748	492	12,413	810
Washington	5,167	230	4,886	326	9,402	912	19,455	1,468
West Virginia	236	8	565	15	1,314	83	2,115	106
Wisconsin	1,707	64	2,404	118	6,642	499	10,753	681
Wyoming	301	9	512	24	1,008	100	1,821	133
U.S. CIVILIAN TOTAL	128,118	5,627	142,700	7,068	288,184	23,286	559,002	35,981
NASA	7	-	6	-	2	-	15	-
Military	208	5	15,397	316	5,696	418	21,301	739
International	13,394	317	7,636	312	7,811	599	28,841	1,228
TOTAL AIRMEN	141,727	5,949	165,739	7,696	301,693	24,303	609,159	37,948

* Totals are based on active airmen certified within the past 25 months.

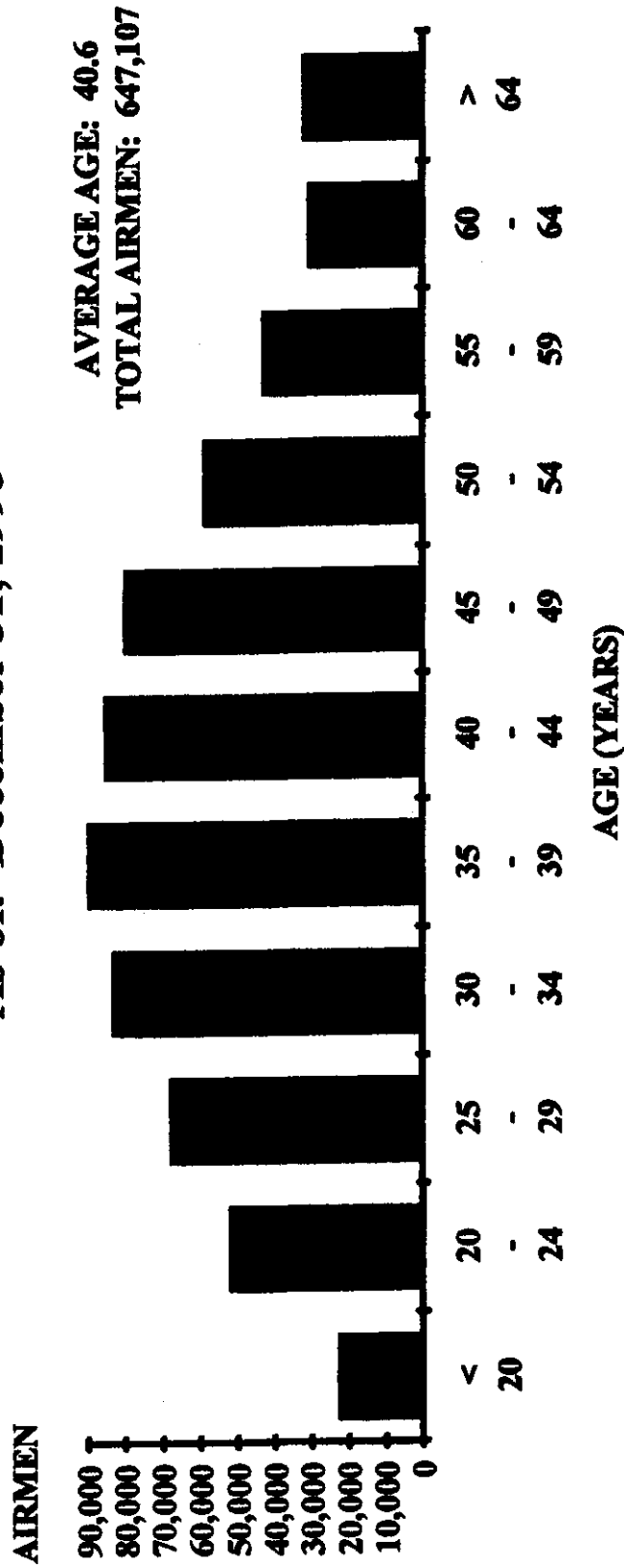
Source: Civil Aeromedical Institute, Aeromedical Certification Division, Program Support Branch; RIS: AC 8500-1, Aeromedical Certification Statistical Handbook Computer Run.

FIGURE IV.C

AGE DISTRIBUTION OF MEDICALLY CERTIFIED

AIRMEN

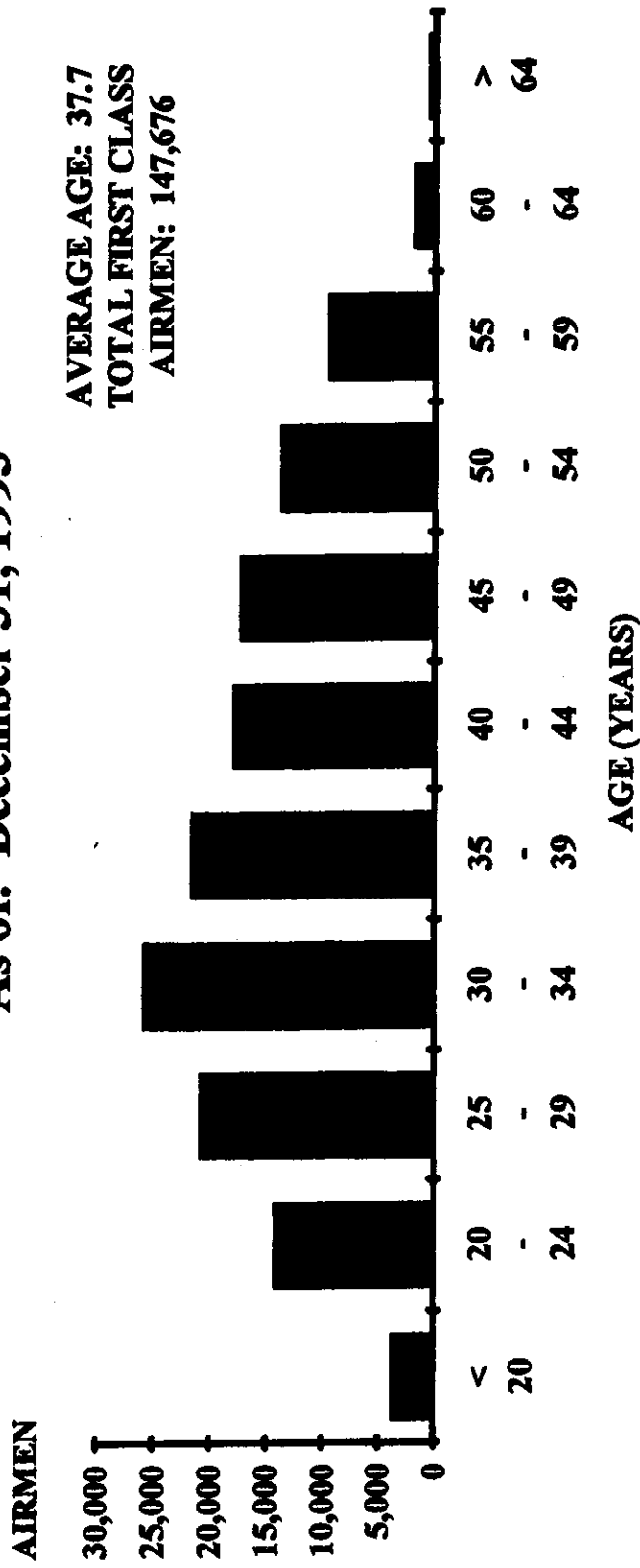
As of: December 31, 1993



Brackets are indicative of age class intervals wherein magnitudes are not apparent on this scale. In such instances, the accompanying table (Table IV.G) should be consulted for frequencies.

Source: Civil Aeromedical Institute, Aeromedical Certification Division, Program Support Branch; RIS: AC 8500-1, Aeromedical Certification Statistical Handbook Computer Run.

FIGURE IV.D
AGE DISTRIBUTION OF MEDICALLY CERTIFIED
FIRST CLASS AIRMEN
As of: December 31, 1993



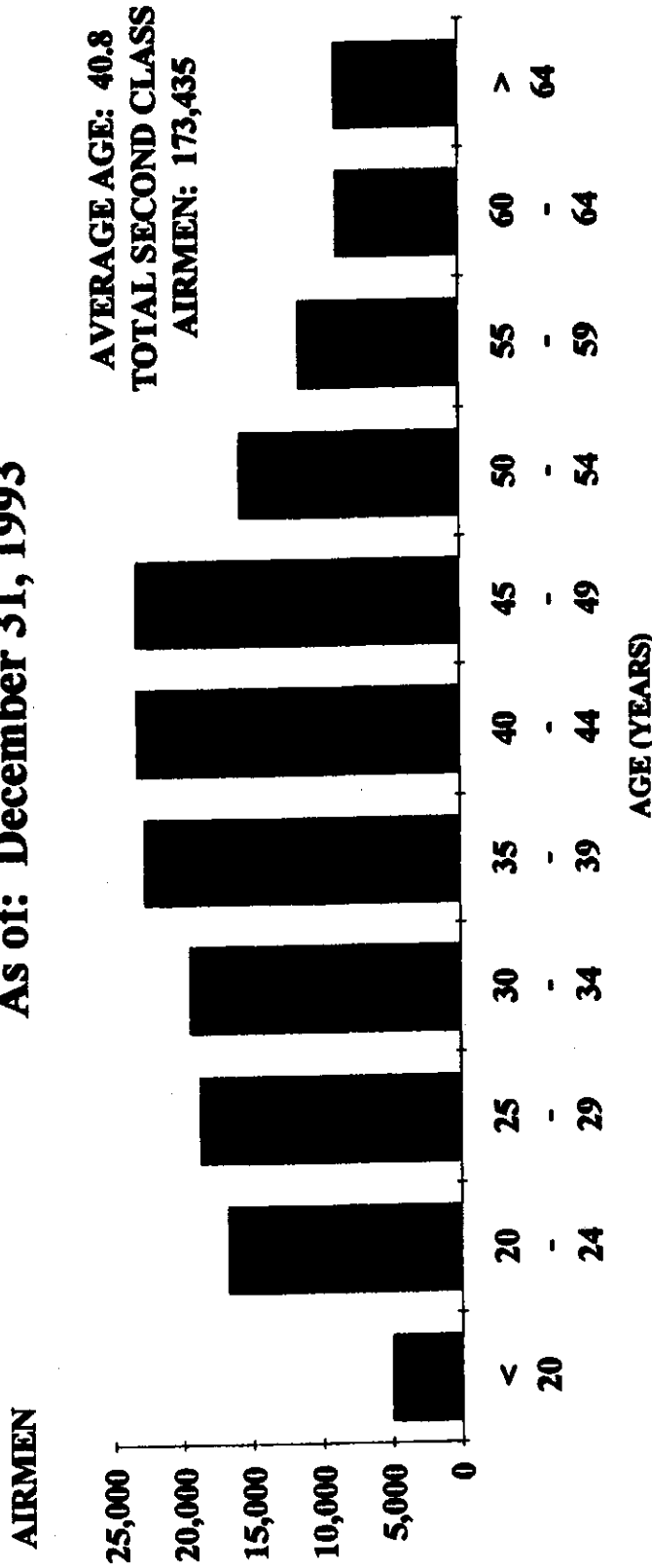
Brackets are indicative of age class intervals wherein magnitudes are not apparent on this scale. In such instances, the accompanying table (Table IV.G) should be consulted for frequencies.

Source: Civil Aeromedical Institute, Aeromedical Certification Division, Program Support Branch; RIS: AC 8500-1, Aeromedical Certification Statistical Handbook Computer Run.

FIGURE IV.E

**AGE DISTRIBUTION OF MEDICALLY CERTIFIED
SECOND CLASS AIRMEN**

As of: December 31, 1993

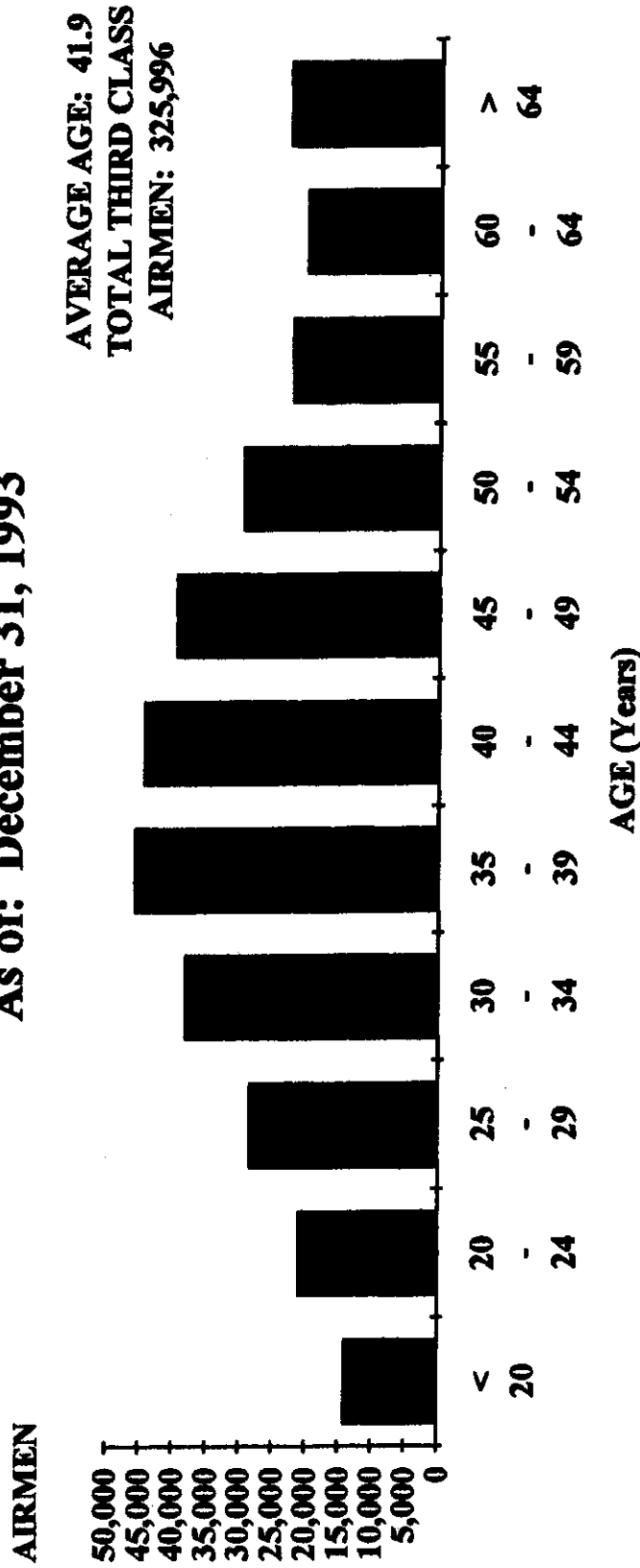


Brackets are indicative of age class intervals wherein magnitudes are not apparent on this scale. In such instances, the accompanying table (Table IV.G) should be consulted for frequencies.

Source: Civil Aeromedical Institute, Aeromedical Certification Division, Program Support Branch; RIS: AC 8500-1, Aeromedical Certification Statistical Handbook Computer Run.

FIGURE IV.F
AGE DISTRIBUTION OF MEDICALLY CERTIFIED
THIRD CLASS AIRMEN

As of: December 31, 1993



Brackets are indicative of age class intervals wherein magnitudes are not apparent on this scale. In such instances, the accompanying table (Table IV.G) should be consulted for frequencies.

Source: Civil Aeromedical Institute, Aeromedical Certification Division, Program Support Branch; RIS: AC 8500-1, Aeromedical Certification Statistical Handbook Computer Run.

Table IV.G

AGE DISTRIBUTION OF ACTIVE AIRMEN BY CLASS AND SEX*
As of: December 31, 1993

Age	First Class		Second Class		Third Class		Total Airmen	
	Male	Female	Male	Female	Male	Female	Male	Female
Less than 15	1	-	2	-	42	7	45	7
15 - 19	3,309	498	4,376	577	12,143	2,052	19,828	3,127
20 - 24	13,091	1,211	15,444	1,310	19,063	2,101	47,598	4,622
25 - 29	19,454	1,396	17,719	1,005	25,795	2,753	62,968	5,154
30 - 34	24,506	1,343	18,406	972	34,866	3,331	77,778	5,646
35 - 39	20,759	838	21,526	1,100	41,975	3,674	84,260	5,612
40 - 44	17,548	388	22,214	948	40,879	3,392	80,641	4,728
45 - 49	17,202	163	22,510	668	36,708	2,740	76,420	3,571
50 - 54	13,713	68	15,254	440	27,768	1,784	56,735	2,292
55 - 59	9,497	24	11,163	263	21,145	1,048	41,805	1,335
60 - 64	1,921	8	8,519	198	19,356	765	29,796	971
65 - 69	478	9	5,014	132	13,329	439	18,821	580
70 - 74	214	3	2,809	67	6,316	162	9,339	232
75 - 79	31	-	672	12	1,901	48	2,604	60
80 - 84	3	-	97	4	351	7	451	11
85 and over	-	-	14	-	56	-	70	-
TOTAL	141,727	5,949	165,739	7,696	301,693	24,303	609,159	37,948
Average Age	38.0	29.7	41.2	35.6	42.5	37.6	41.1	36.0

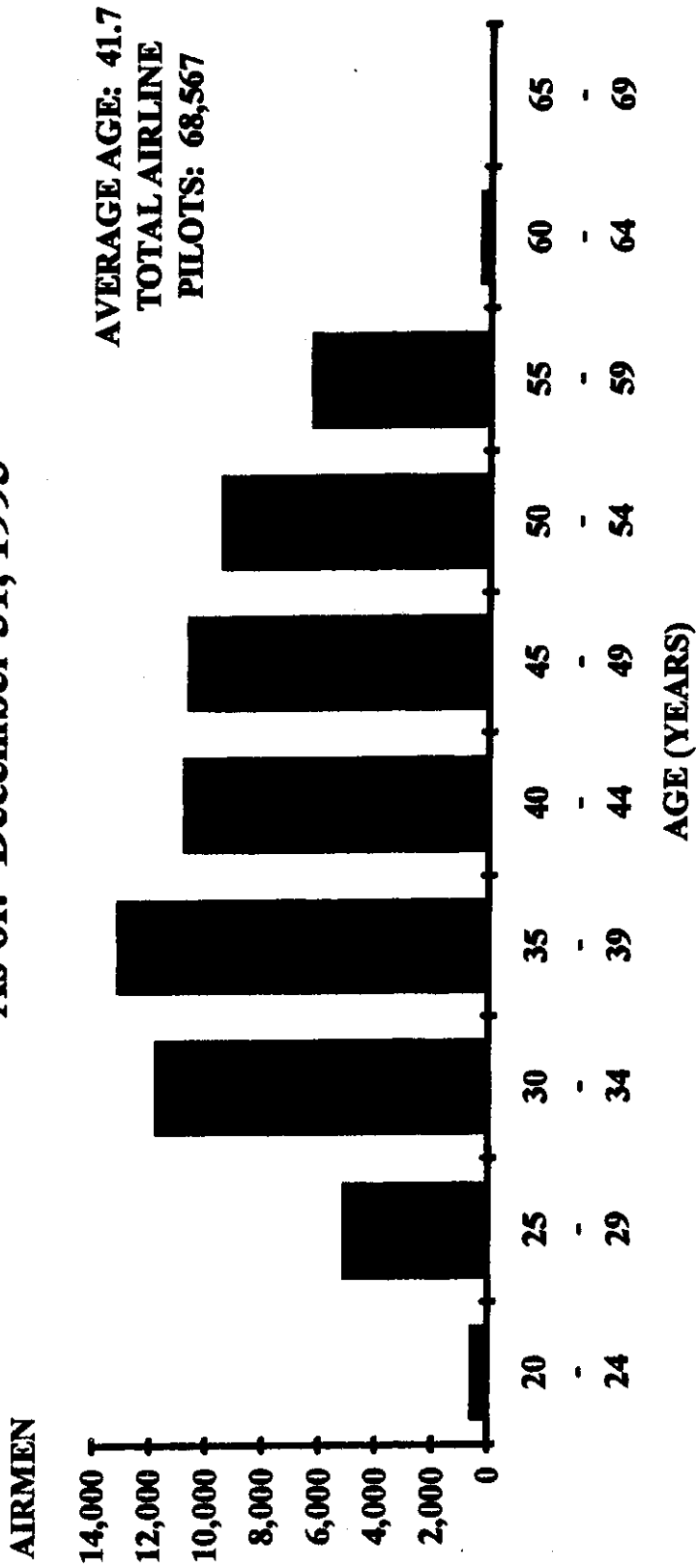
* Totals are based on active certified airmen within the past 25 months.

Source: Civil Aeromedical Institute, Aeromedical Certification Division, Program Support Branch; RIS: 8500-1, Aeromedical Certification Statistical Handbook Computer Run.

FIGURE IV.H

AGE DISTRIBUTION OF AIRLINE PILOTS

As of: December 31, 1993



Source: Civil Aeromedical Institute, Aeromedical Certification Division, Program Support Branch; RIS: AC 8500-1, Aeromedical Certification Statistical Handbook Computer Run.

Table IV.I

AGE DISTRIBUTION OF AIRLINE PILOTS*
As of: December 31, 1993

Age Groups (1)	Airline Pilots (2)	Certified First Class Airmen** (3)	Percent of Total	
			Airline Pilots (4)	Certified First Class Airmen (5)
20 - 24	634	14,302	0.9	10.0
25 - 29	5,155	20,850	7.5	14.5
30 - 34	11,818	25,849	17.2	18.0
35 - 39	13,165	21,597	19.2	15.0
40 - 44	10,824	17,936	15.8	12.5
45 - 49	10,668	17,365	15.6	12.1
50 - 54	9,506	13,781	13.9	9.6
55 - 59	6,322	9,521	9.2	6.7
SUBTOTAL	68,092	141,201	99.3	98.4
60 - 64	419	1,929	0.6	1.3
65 - 69	56	487	0.1	0.3
TOTAL	68,567	143,617	100.0	100.0
Average Age	41.7	38.2		

* Airline Pilots, Column (2), were determined by the combination of first class medical certificate issuance during the preceding 13 months and an occupation of "pilot for an airline". Figures in Column (3) were based on first class medical certificate issuance during the preceding 25 months.

** Extreme age groups were deleted to more closely compare with age requirements for airline pilots. Under Part 121, Federal Aviation Regulations, no person may serve as a pilot of an airplane engaged in air carrier operations if that person has reached his/her 60th birthday. However, some airmen falling into this category still list their occupation as "pilot" even though their actual duties do not involve control of the airplane.

Table IV.J

HEIGHT DISTRIBUTION OF ACTIVE AIRMEN BY CLASS AND SEX*
As of: December 31, 1993

Height in Inches	First Class		Second Class		Third Class		Total Airmen	
	Male	Female	Male	Female	Male	Female	Male	Female
Less than 59	121	30	170	56	366	195	657	281
59	60	6	98	41	170	128	328	175
60	100	55	201	144	458	571	759	770
61	80	117	146	244	427	931	653	1,292
62	89	309	188	619	491	2,031	768	2,959
63	181	545	366	736	919	2,658	1,466	3,939
64	630	850	1,049	1,151	2,233	3,633	3,912	5,634
65	1,495	919	2,291	1,096	4,475	3,503	8,261	5,518
66	3,924	1,002	5,509	1,119	10,851	3,621	20,284	5,742
67	7,396	822	9,671	980	18,112	2,815	35,179	4,617
68	13,254	602	16,059	693	29,874	1,999	59,187	3,294
69	16,375	346	19,733	424	35,032	1,154	71,140	1,924
70	21,661	214	25,085	231	46,131	624	92,877	1,069
71	20,213	73	23,479	77	43,185	246	86,877	396
72	23,844	40	26,579	52	46,399	103	96,822	195
73	13,066	11	14,309	15	25,586	39	52,961	65
74	10,054	3	10,563	5	18,793	30	39,410	38
75	5,000	2	5,443	3	9,376	9	19,819	14
Over 75	4,184	3	4,800	10	8,815	13	17,799	26
TOTAL	141,727	5,949	165,739	7,696	301,693	24,303	609,159	37,948
Average								
Height	70.7	65.7	70.6	65.3	70.5	65.1	70.6	65.2

* Totals are based on active airmen certified within the past 25 months. Height, as reported by the airmen, is rounded to the nearest inch.

Source: Civil Aeromedical Institute, Aeromedical Certification Division, Program Support Branch; RIS: AC 8500-1, Aeromedical Certification Statistical Handbook Computer Run.

Table IV.K

WEIGHT DISTRIBUTION OF ACTIVE AIRMEN BY CLASS AND SEX*
As of: December 31, 1993

Weight in Pounds	First Class		Second Class		Third Class		Total Airmen	
	Male	Female	Male	Female	Male	Female	Male	Female
Less than 90	13	2	12	5	18	21	43	28
90 - 99	7	29	9	65	29	204	45	298
100 - 109	64	262	63	338	188	1,109	315	1,709
110 - 119	243	868	275	1,005	676	2,959	1,194	4,832
120 - 129	855	1,447	1,135	1,457	2,361	4,549	4,351	7,453
130 - 139	2,764	1,307	3,429	1,559	6,185	4,821	12,378	7,687
140 - 149	6,866	890	7,672	1,190	13,430	3,641	27,968	5,721
150 - 159	13,789	493	14,192	724	24,481	2,526	52,462	3,743
160 - 169	20,315	268	20,769	478	35,612	1,592	76,696	2,338
170 - 179	23,668	168	24,956	318	43,257	996	91,881	1,482
180 - 189	23,146	87	25,548	205	44,679	653	93,373	945
190 - 199	17,693	49	20,805	109	37,547	414	76,045	572
200 - 209	12,111	27	15,917	66	29,619	266	57,647	359
210 - 219	8,093	19	10,822	56	21,097	193	40,012	268
220 - 229	5,068	12	7,699	42	15,047	142	27,814	196
230 - 239	2,973	12	4,791	31	9,934	83	17,698	126
240 - 249	1,732	4	2,920	15	6,426	50	11,078	69
Over 249	2,327	5	4,725	33	11,107	84	18,159	122
TOTAL	141,727	5,949	165,739	7,696	301,693	24,303	609,159	37,948
Average								
Weight	183.1	136.1	186.5	140.7	188.1	141.4	186.5	140.4

* Totals are based on active airmen certified within the past 25 months. Weight, as reported by the airmen, is rounded to the nearest pound.

Source: Civil Aeromedical Institute, Aeromedical Certification Division, Program Support Branch; RIS: AC 8500-1, Aeromedical Certification Statistical Handbook Computer Run.

Table IV.L

ACTIVE AIRMEN BY OCCUPATION, CLASS AND SEX*
As of: December 31, 1993

Occupation Code	First Class		Second Class		Third Class		Total		
	Male	Female	Male	Female	Male	Female	Male	Female	
1 Pilot (Scheduled or Non-Scheduled Airline)	70,080	1,838	807	35	71	1	70,958	1,874	11.3
2 Flight Engineer	935	24	1,748	8	18	-	2,701	32	0.4
3 Flight Navigator/Flight Radio Operator	11	1	48	1	1	-	60	2	0.0+
4 Business or Executive Pilot	23,654	682	227	12	21	-	23,902	694	3.8
5 Commercial Pilot (Self Employed)	29	1	3,792	121	9	-	3,830	122	0.6
6 Commercial Pilot (Not Self Employed)	208	6	19,430	460	63	-	19,701	466	3.1
7 Aero Application (Agriculture)	44	2	2,423	5	7	-	2,474	7	0.4
8 Air Traffic Controller**	30	1	1,049	96	36	6	1,115	103	0.2
9 Flight Instructor	5,396	615	4,209	470	26	4	9,631	1,089	1.7
0 Aircraft Mechanic & Fixed Base Operator	467	2	2,549	26	169	7	3,185	35	0.5
X Not Given or Non-Aeronautical Occupation	40,860	2,776	129,435	6,460	301,181	24,228	471,476	33,464	78.0
F Flight Service Station Specialist	13	1	22	2	91	57	126	60	0.0+
TOTAL	141,727	5,949	165,739	7,696	301,693	24,303	609,159	37,948	100.0

* Totals are based on active airmen certified within the past 25 months. Occupation was based on response by the airmen in Block 11 of FAA Form 8500-8; if not given, occupation was classified as "non-aeronautical". Basis for percentage computations is number in each occupation category to total airmen.

** Includes military ATCs and civilian (FAA) ATCs who are also pilots and/or were issued a medical certificate.

Source: Civil Aeronautical Institute, Aeronautical Certification Division, Program Support Branch, RIS: AC 8500-1, Aeronautical Certification Statistical Handbook

Table IV.M

EMPLOYERS OF ACTIVE AIRMEN BY CLASS OF CERTIFICATE ISSUED*
As of: December 31, 1993

Employer	First Class	Second Class	Third Class	Total	Major Percent of Total
Air Wisconsin	221	1	2	224	
Alaska Airlines	780	181	2	963	
Aloha Airlines	192	19	-	211	
American Airlines	8,900	1,607	24	10,531	
American Eagle	1,025	12	2	1,039	
America West	978	30	5	1,013	
Atlantic Southeast	478	20	1	499	
Big Sky Airlines	13	-	-	13	
Braniff Airlines	29	2	-	31	
British Airways	29	8	-	37	
Britt Airways	20	1	-	21	
Business Express	467	5	1	473	
China Airlines	89	3	-	92	
Comair, Inc.	610	54	-	664	
Continental Airlines	4,224	61	5	4,290	
Delta Airlines	9,154	57	25	9,236	
Eastern Airlines	12	2	-	14	
Evergreen Airlines	227	90	-	317	
Federal Express	2,118	231	6	2,355	
Hawaiian Airlines	271	30	-	301	
Henson Airlines	63	12	-	75	
Horizon Airlines	553	31	-	584	
Japan Airlines	54	143	3	200	
KLM - Royal Dutch Airlines	35	-	2	37	
Korean Airlines	515	91	-	606	
Lufthansa-German Airlines	80	59	3	142	
Mesa Airlines	317	14	-	331	
Mesaba Airlines	364	2	2	368	
Metro Airlines	19	4	-	23	
Midway Airlines	14	1	-	15	
Northwest Airlines	5,092	80	36	5,208	
Pan Amer. World Airways	25	3	2	30	
Pennsylvania Airlines	50	1	-	51	
Piedmont Aviation	179	9	1	189	
Saudi Arabian Airlines	1,118	119	1	1,238	
Simmons	346	2	-	348	
Southwest Airlines	1,384	21	7	1,412	
Trans World Airlines	2,780	70	4	2,854	
U.S. Air	5,404	441	20	5,865	
United Airlines	7,904	675	17	8,596	
West Air	297	31	-	328	
World Airways	180	43	-	223	
Zantop Airways	105	12	-	117	
SUBTOTAL - ALL AIRLINES	56,715	4,278	171	61,164	(9.5)

(Continued)

Table IV.M (Continued)

EMPLOYERS OF ACTIVE AIRMEN BY CLASS OF CERTIFICATE ISSUED*
As of: December 31, 1993

Employer	First Class	Second Class	Third Class	Total	Major Percent of Total
Federal Aviation Administration (FAA)	553	5,642	351	6,546	(1.1)
Government, other than Military or FAA, includes State and Local Government	411	1,035	52	1,498	(0.3)
Aircraft Industry	255	234	25	514	(0.1)
Industry, other than Aircraft	3,346	2,172	82	5,600	(0.9)
Fixed Base Operation (Flying schools, etc.)	5,045	6,589	83	11,717	(1.9)
Self Employed	3,160	6,613	250	10,023	(1.6)
Other	33,793	15,117	582	49,492	(7.6)
Non-Aeronautical	39,382	122,017	324,009	485,408	(75.1)
Air Force	2,886	4,623	134	7,643	(1.2)
Army	533	2,734	29	3,296	(0.2)
Coast Guard	124	114	4	242	(0.1)
Marines and Navy	1,394	2,111	55	3,560	(0.3)
National Aeronautics and Space Administration (NASA)	79	156	169	404	(0.1)
SUBTOTAL - ALL OTHERS	90,961	169,157	325,825	585,943	(90.5)
TOTAL	147,676	173,435	325,996	647,107	(100.0)

* Totals are based on active airmen certified within the past 25 months. Employer data is provided by the airmen in Block 12 of FAA Form 8500-8. If blank or other than aeronautical employer is reflected, it is classified as "not applicable".

Source: Civil Aeromedical Institute, Aeromedical Certification Division, Program Support Branch; RIS: AC 8500-1, Aeromedical Certification Statistical Handbook Computer Run.

SECTION V**MEDICAL CHARACTERISTICS OF THE AIRMAN POPULATION**

This section presents medical characteristics of the active airman population (those airmen certified within the preceding 25 months) as of December 31, 1993, by class of medical certificate issued.

Table V.A

ACTIVE AIRMEN BY NUMBER OF RESTRICTIONS CARRIED, CLASS AND SEX*
As of: December 31, 1993

Number of Restrictions	First Class		Second Class		Third Class		Total Airmen		Total Airmen	Total Restrictions
	Male	Female	Male	Female	Male	Female	Male	Female		
1	55,749	1,991	90,322	4,027	161,735	13,082	307,806	19,100	326,906	326,906
2	806	4	1,895	40	8,622	197	11,323	241	11,564	23,128
3	25	-	150	1	328	6	503	7	510	1,530
4	1	-	7	-	8	-	16	-	16	64
5	-	-	-	-	1	-	1	-	1	5
6	-	-	-	-	-	-	-	-	-	-
More than 6	-	-	-	-	-	-	-	-	-	-
Total Airmen	56,581	1,995	92,374	4,068	170,694	13,285	319,649	19,348	338,997	351,633

* Figures are based on active airmen certified within the past 25 months.

Source: Civil Aeromedical Institute, Aeromedical Certification Division, Program Support Branch; RIS: AC 8500-1, Aeromedical Certification Statistical Handbook Run.

Table V.B

FREQUENCY OF RESTRICTIONS AMONG ACTIVE AIRMEN BY CLASS AND SEX*
As of: December 31, 1993

Restriction	First Class		Second Class		Third Class		Total Airmen	
	Male	Female	Male	Female	Male	Female	Male	Female
Must Have Available Glasses For Near Vision	16,356	101	16,982	419	35,705	1,961	69,043	2,481
Must Wear Corrective Lenses	27,608	1,599	46,342	2,564	81,592	7,650	155,542	11,813
Must Wear Glasses for Near and Distant Vision	4,812	84	11,290	385	19,673	1,318	35,775	1,787
Must Wear Lenses for Distant Vision and Possess Glasses for Near Vision	7,273	194	16,833	686	29,055	2,249	53,161	3,129
Must Wear Prismatic Correction	3	-	5	-	18	-	26	-
Must Wear Corrective Lenses: Extra Pair Must Be Available	60	3	95	5	134	9	289	17
Must Wear Hearing Aid	58	1	216	3	570	24	844	28
Must Wear Artificial Limb	17	1	65	1	154	4	236	6
Oxygen Required when Flying Above 7,999 Feet	-	-	-	-	4	-	4	-
Passenger Carrying Prohibited	1	-	5	-	13	1	19	1

(Continued)

Table V.B (Continued)

FREQUENCY OF RESTRICTIONS AMONG ACTIVE AIRMEN BY CLASS AND SEX*

As of: December 31, 1993

Restriction	First Class		Second Class		Third Class		Total Airmen	
	Male	Female	Male	Female	Male	Female	Male	Female
Not Valid for Pilot in Command	-	1	7	-	5	-	12	1
Not Valid for Control Tower Operator Duties	1	-	2	-	11	-	14	-
Not Valid for Air Transport Duties	1	-	1	-	3	-	5	-
Not Valid for Night Flying or By Color Signal Control (Color Vision)	157	1	887	1	5,910	26	6,954	28
Not Valid for Night Flying (Glaucoma)	-	-	2	-	12	-	14	-
Not Valid for Flying Where Radio Use is Required	1	-	7	-	59	4	67	4
Valid for Flight Service Station or Center Duties Only	-	-	1	-	1	-	2	-
Valid for Flight Test Only	2	-	5	-	5	-	12	-
Second Class Privileges Limited to Crop Dusting	-	-	23	-	-	-	23	-
Second Class Privileges Limited to Flight Engineer Duties	1	-	41	-	-	-	42	-

(Continued)

Table V.B (Continued)

FREQUENCY OF RESTRICTIONS AMONG ACTIVE AIRMEN BY CLASS AND SEX*

As of: December 31, 1993

Restriction	First Class		Second Class		Third Class		Total Airmen	
	Male	Female	Male	Female	Male	Female	Male	Female
Second Class Privileges Limited to Control Tower Operator Duties	1	-	2	1	-	-	3	1
Valid for and Limited to ATC Duties Only	-	-	45	7	6	1	51	8
Valid for ATC Duties - Center Only	-	-	2	-	5	-	7	-
Valid for Flight Service Station Duties Only	-	-	2	-	3	-	5	-
Limited to Military Controller Duties	-	-	4	-	3	1	7	1
Valid for Control Tower Duties When Second Controller on Duty	-	-	-	-	-	-	-	-
Valid Only When Accompanied by Another Qualified Pilot	-	-	4	-	1	-	5	-
Valid for Student Pilot Purposes Only	21	3	94	3	1,105	95	1,220	101
Second Class Privileges Limited to Cargo Operations	-	-	1	-	1	-	2	-
Time Limitation Restrictions	760	6	1,221	21	5,256	123	7,237	150

(Continued)

Table V.B (Continued)

FREQUENCY OF RESTRICTIONS AMONG ACTIVE AIRMEN BY CLASS AND SEX*

As of: December 31, 1993

Restriction	First Class		Second Class		Third Class		Total Airmen	
	Male	Female	Male	Female	Male	Female	Male	Female
Special Issuance Restrictions	6	-	1	-	7	2	14	2
Miscellaneous Restrictions	296	5	402	13	685	25	1,383	43
TOTAL	57,435	1,999	94,587	4,109	179,996	13,493	332,018	19,601

* Figures are based on active airmen certified within the past 25 months; however, the restriction may have been assigned prior to the most recent examination. Airmen may have more than one restriction.

Source: Civil Aeromedical Institute, Aeromedical Certification Division, Program Support Branch; RIS: AC 8500-1, Aeromedical Certification Statistical Handbook Computer Run.

Table V.C

ACTIVE AIRMEN WITH DEFECTIVE COLOR VISION BY CLASS AND SEX*
As of: December 31, 1993

Class Issued	Frequency**			
	Male	Percent	Female	Percent
First	2,099	(1.5)	1	(0.0+)
Second	4,555	(2.7)	11	(0.1)
Third	11,155	(3.7)	42	(0.2)
TOTAL	17,809	(2.9)	54	(0.1)

* Figures are based on active airmen certified within the past 25 months and the assignment of the restriction "Not Valid for Night Flying or by Color Signal Control" or issuance of a waiver for deficient color vision.

** Basis for percentages is the number of active airmen by sex within each class. Percent of total is computed using the total male or female population.

Source: Civil Aeromedical Institute, Aeromedical Certification Division, Program Support Branch;
 RIS: AC 8500-1, Aeromedical Certification Statistical Handbook Computer Run.

Table V.D

ACTIVE AIRMEN WITH WAIVERS BY CLASS AND SEX*
As of: December 31, 1993

Class Issued	Frequency**			
	Male	Percent	Female	Percent
First	10,487	(7.4)	469	(7.9)
Second	27,631	(16.7)	1,303	(16.9)
Third	17,620	(5.8)	480	(2.0)
TOTAL	55,738	(9.1)	2,252	(5.9)

* Figures are based on active airmen certified within the past 25 months; however, the waiver may have been issued prior to the most recent examination. Tabulations were based on an indication of a waiver in the class issued code or the presence of a waiver number.

** Basis for percentages is the number of active airmen by sex within each class. Percent of total is computed using the total male or female population.

Source: Civil Aeromedical Institute, Aeromedical Certification Division, Program Support Branch;
RIS: AC 8500-1, Aeromedical Certification Statistical Handbook Computer Run.