

1994

AEROMEDICAL CERTIFICATION

STATISTICAL HANDBOOK



U.S. DEPARTMENT OF TRANSPORTATION

FEDERAL AVIATION ADMINISTRATION

CIVIL AEROMEDICAL INSTITUTE

AEROMEDICAL CERTIFICATION DIVISION

Table of Contents

<u>Section</u>	<u>Page</u>
I. AVIATION MEDICAL EXAMINER INFORMATION	1
A. Designated FAA Aviation Medical Examiners by Region	2
B. Medical Practice of Aviation Medical Examiners (Chart)	3
C. Regional Coverage of Aviation Medical Examiners Versus Civil Airmen	4
D. Aviation Medical Examiner Seminars - Date, Location and Attendance	5
E. Aviation Medical Examiner Seminars and Attendance	6
F. Active Aviation Medical Examiners Seminar Attendance by Region	7
G. Regional Aviation Medical Examiner Activity	8
H. Aviation Medical Examiner Summary Data	9
II. CERTIFICATION ACTIVITY	11
A. Airman Applications for Medical Certification (Chart)	12
B. Receipts of Medical Certificate Applications by Class	13
C. Medical Applications Processing by the Aeromedical Certification Division	14
D. Aeromedical Certification Division, Correspondence Unit Activity	15
E. Aeromedical Certification Division Computer Tape File Summary	16
F. Medical Certification Activity Summary	17
III. REFERRALS AND DENIALS	19
A. Distribution of Causes for Review by Major Category	20
B. Distribution of Causes for Review by Major and Minor Categories	21
C. Special Issuances and Denials (Table)	22

Table of Contents (Continued)

<u>Section</u>	<u>Page</u>
IV. GENERAL AIRMAN POPULATION DATA	23
A. Regional Distribution of Active Airmen by Class of Certificate and Effective Status	24
B. Active Airmen's State of Residence by Sex and Class of Certificate Issued	25
C. Age Distribution of Medically Certified Airmen (Chart)	27
D. Age Distribution of Medically Certified First Class Airmen (Chart)	28
E. Age Distribution of Medically Certified Second Class Airmen (Chart)	29
F. Age Distribution of Medically Certified Third Class Airmen (Chart)	30
G. Age Distribution of Active Airmen by Class and Sex (Table)	31
H. Age Distribution of Airline Pilots (Chart)	32
I. Age Distribution of Airline Pilots (Table)	33
J. Height Distribution of Active Airmen by Class and Sex	34
K. Weight Distribution of Active Airmen by Class and Sex	35
L. Active Airmen by Occupation, Class and Sex	36
M. Employers of Active Airmen by Class of Certificate Issued	37
V. MEDICAL CHARACTERISTICS OF THE AIRMAN POPULATION	39
A. Active Airmen by Number of Restrictions Carried, Class and Sex	40
B. Frequency of Restrictions Among Active Airmen by Class and Sex	41
C. Active Airmen with Defective Color Vision by Class and Sex	45
D. Active Airmen with Waivers by Class and Sex	46

SYMBOLS

Category not applicable	N/A
Data not available	--
Quantity zero	-
Quantity more than 0 but less than 0.05	0.0
More than	>
Less than	<

FOR ADDITIONAL INFORMATION ON DATA PRESENTED, please refer to the footnotes provided on the table or chart, or contact the office indicated in the source note.

SECTION I

AVIATION MEDICAL EXAMINER INFORMATION

This section reflects the activities of the Aviation Medical Examiner Program during calendar year 1994 with some comparative data for previous years.

An Aviation Medical Examiner (AME) is a physician authorized by the Federal Aviation Administration (FAA) to perform airman physical examinations for issuance of FAA medical certificates. These physicians are designated according to the geographical distribution of airmen. There are also military facilities (installations) designated to perform FAA airman examinations of military personnel for issuance of second and third class certificates.

AME seminars are held in each region and at Oklahoma City's Civil Aeromedical Institute to acquaint these physicians with the regulations and procedures governing the issuance of FAA medical certificates.

Table I.A
DESIGNATED FAA AVIATION MEDICAL EXAMINERS BY REGIONS
1993-1994

REGION	PERCENT OF 1994 TOTAL*	AVIATION MEDICAL EXAMINERS	
		1994	1993
Alaskan	1.8%	102	101
Central	6.7%	390	408
Eastern	12.5%	723	744
Great Lakes	15.3%	884	897
New England	3.9%	225	224
Northwest Mountain	11.1%	645	648
Southern	17.6%	1,018	1,012
Southwest	13.6%	786	781
Western Pacific	8.6%	503	545
SUBTOTAL	91.1	5,276	5,360
Military **	2.4%	138	441
International	6.5%	375	362
TOTAL	100.0%	5,789	6,163

* The basis for percentage computations is total designations as of the end of calendar year 1994.

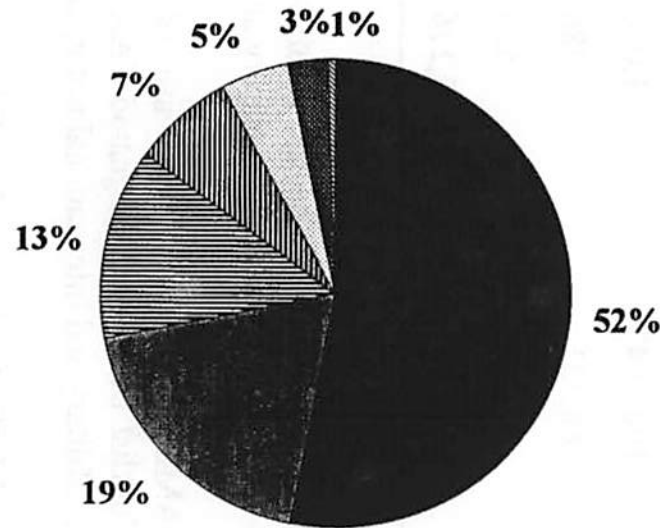
** There are currently 439 military clinics; individual physician designations are in process and have not been included for 1994.

Source: Civil Aeromedical Institute, Aeromedical Education Division, Aviation Medical Examiner Program; RIS: AC 8520-2, AME Worklist by State (designated FAA Aviation Medical Examiners by Region and State).

FIGURE I.B

**MEDICAL PRACTICE OF AVIATION
MEDICAL EXAMINERS - 1994 ***

SPECIALTY & Number of AMEs



- Family Practice - 3,001
- Internal Medicine - 1,067
- Miscellaneous - 749
- General Surgery - 393
- Aviation Medicine - 258
- Ophthalmology - 152
- Psychiatry - 31

TOTAL (100%) = 5,651

* Based on United States and International Aviation Medical Examiners; Military not included.

Source: Civil Aeromedical Institute, Aeromedical Education Division, Aviation Medical Examiner Program; RIS: AC 8520-5, AME Specialty Summary by State.

Table I.C

**REGIONAL COVERAGE OF AVIATION MEDICAL EXAMINERS
VERSUS CIVIL AIRMEN
1994**

REGION	Active U.S. Civil Airman Population *	U.S. Non-Military AME Population **	Ratio AMEs To Airmen
Alaskan	8,798	102	1:86
Central	29,064	390	1:75
Eastern	73,790	723	1:102
Great Lakes	99,782	884	1:113
New England	27,346	225	1:122
Northwest Mountain	59,952	645	1:93
Southern	106,164	1,018	1:104
Southwest	68,331	786	1:87
Western Pacific	96,308	503	1:191
TOTAL	569,535	5,276	1:108

* Active U.S. Civil Airman Population figures are as of December 31, 1994; RIS: AC 8065-4, Examination Time Period Summary. Military and International not included.

** U.S. Non-Military AME Population figures are as of January 1, 1995; RIS: AC 8520-2, AME Worklist by State (Designated FAA Aviation Medical Examiners by Region and State). Military and International not included.

Source: Civil Aeromedical Institute, Aeromedical Education Division, Aviation Medical Examiner Program; and Aeromedical Certification Division, Medical Systems Branch.

Table 1.D
AVIATION MEDICAL EXAMINER SEMINARS
DATE, LOCATION AND ATTENDANCE
1994

DATE	LOCATION	ATTENDANCE
January 20 - 23	Fort Lauderdale, FL	93
February 24 - 27	San Francisco, CA	107
March 7 - 11	Oklahoma City, OK	75
March 17 - 20	Atlanta, GA	74
April 21 - 24	Saint Louis, MO	94
May 8 - 12	San Antonio, TX (ASMA)	177
May 23 - 27	Oklahoma City, OK	70
June 9 - 12	Boston, MA	113
June 23 - 26	Chicago, IL	84
July 21 - 24	Anchorage, AK	127
August 26 - 28	Washington, D.C.	88
September 26 - 30	Oklahoma City, OK	74
October 28 - 30	Dallas, TX	124
November 3 - 6	Orlando, FL (SMA)	58
November 14 - 18	Oklahoma City, OK	66
December 9 - 11	San Diego, CA	107
TOTAL		1,531

Source: Civil Aeromedical Institute, Aeromedical Education Division, Aviation Medical Examiner Program.

Table I.E
AVIATION MEDICAL EXAMINER SEMINARS AND ATTENDANCE
1960-1994

DATE	SEMINARS	ATTENDANCE
1960	1	49
1961	16	1,031
1962	24	1,431
1963	13	1,153
1964	9	1,406
1965	10	1,596
1966	7	1,187
1967	11	1,281
1968	5	545
1969	7	970
1970	5	750
1971	10	1,521
1972	5	873
1973	4	806
1974	8	1,498
1975	13	1,633
1976	15	1,871
1977	12	1,309
1978	14	1,439
1979	16	1,733
1980	15	2,012
1981	13	1,477
1982	15	1,652
1983	17	1,523
1984	17	1,551
1985	15	2,033
1986	11	1,701
1987	13	1,573
1988	17	1,525
1989	16	1,550
1990	15	1,599
1991	15	1,472
1992	17	1,507
1993	15	1,418
1994	16	1,531
TOTAL	432	48,206

Source: Civil Aeromedical Institute, Aeromedical Education Division, Aviation Medical Examiner Program.

Table I.F

**ACTIVE AVIATION MEDICAL EXAMINERS SEMINAR
ATTENDANCE BY REGION *
1994**

REGION	Total AMEs	One Seminar	More Than One Seminar	No Seminar Attendance
Alaskan	102	17	77	8
Central	390	52	338	-
Eastern	723	118	590	14
Great Lakes	884	172	712	-
New England	225	43	182	-
Northwest Mountain	645	141	504	-
Southern	1,018	188	829	1
Southwest	786	130	649	7
Western Pacific	503	55	445	3
International	375	136	197	42
TOTAL	5,651	1,052	4,523	75
Percent of Total	100.0	18.6	80.0	1.4

* Training data are obtained from computer listings of non-military Aviation Medical Examiners.

Source: Civil Aeromedical Institute, Aeromedical Education Division, Aviation Medical Examiners Program; RIS: AC 8520-6, AME Training Summary Report.

Table I.G

**REGIONAL AVIATION MEDICAL EXAMINER ACTIVITY
1994**

REGION	AMEs Appointed	AMEs Reinstated	AMEs Separated	Total AMEs
Alaskan	4	-	-	102
Central	18	2	37	390
Eastern	27	4	50	723
Great Lakes	50	4	70	884
New England	12	4	17	225
Northwest Mountain	36	5	52	645
Southern	79	13	74	1,018
Southwest	45	15	58	786
Western Pacific	20	6	58	503
International	28	-	16	375
Military	138	-	1	138
TOTAL	457	53	433	5,789

* There are currently 439 military clinics; individual physician designations are in process and have not been included for 1994.

Source: Civil Aeromedical Institute, Aeromedical Education Division, Aviation Medical Examiners Program.

Table I.H
AVIATION MEDICAL EXAMINER SUMMARY DATA *
1994

A.	Number of Designated U.S. Non-Military Aviation Medical Examiners	5,276
B.	Number of Designated International Aviation Medical Examiners	375
C.	Number of Designated Military Aviation Medical Examiners	138
D.	Ratio of U.S. Non-Military Aviation Medical Examiners to U.S. Civil Airmen	1:108
E.	Percentage of Non-Military Aviation Medical Examiners Who Are Qualified Pilots	49%
F.	Number of Non-Military Aviation Medical Examiners Who Participate in Accident Investigation	113
G.	Percentage of Non-Military Aviation Medical Examiners Who Have Attended One Seminar	18.6%
H.	Percentage of Non-Military Aviation Medical Examiners Who Have Attended More Than One Seminar	80%
I.	Percentage of Non-Military Aviation Medical Examiners Who Have Not Attended A Seminar	1.4%
J.	Total Number of Seminars Conducted in 1994	16
K.	Total Attendance of Aviation Medical Examiners at Seminars	1,531

* An Aviation Medical Examiner may have been classified in more than one of these categories.

Source: Civil Aeromedical Institute, Aeromedical Education Division, Aviation Medical Examiner Program.

SECTION II**CERTIFICATION ACTIVITY**

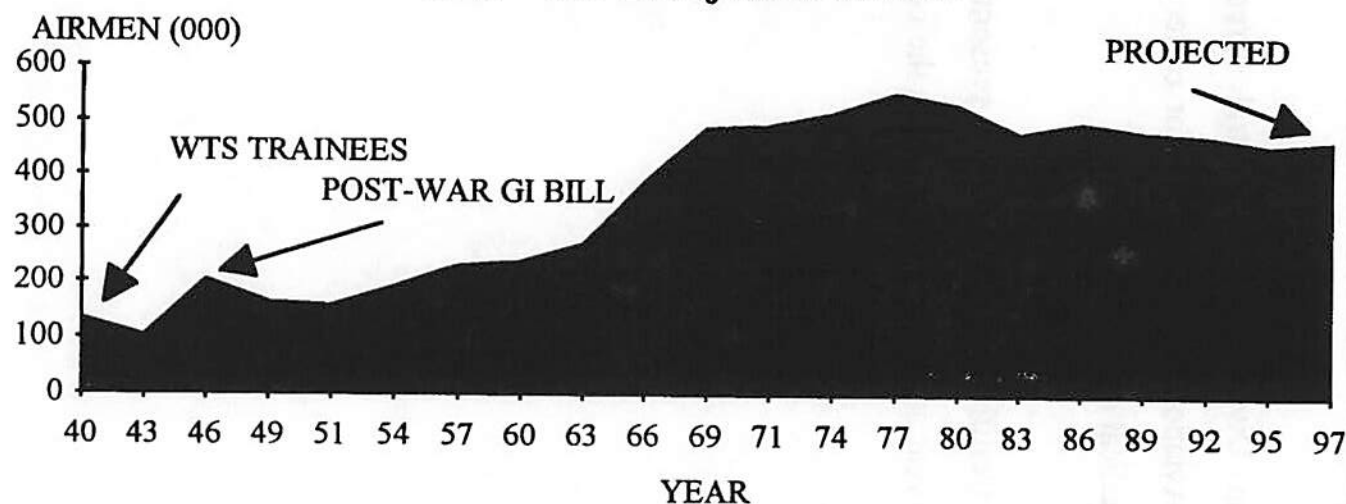
The Aeromedical Certification Division is the central screening facility and repository within the Federal Aviation Administration for collection, investigation, adjudication, and analysis of medical data.

Activities of the Aeromedical Certification Division are presented in this section. Data are presented by calendar year and reflect workload in the certification area.

FIGURE II.A

AIRMAN APPLICATIONS FOR MEDICAL CERTIFICATION

1940 - 1994 Projected to 1997



Year	1940	1941	1942	1943	1944	1945	1946	1947	1948	1949	1950	1951	1952	1953	1954	1955
Applications	134.4	172.2	161.6	102.7	113.8	154.6	202.1	289.6	233.4	162.5	144	157.4	145.7	133.5	160.6	168.6
Percentage*	83.5%	28.1%	-6.2%	-36.4%	10.8%	35.9%	30.7%	43.3%	-19.4%	-30.4%	-11.4%	9.3%	-7.4%	-8.4%	20.3%	5.0%
Year	1956	1957	1958	1959	1960	1961	1962	1963	1964	1965	1966	1967	1968	1969	1970	1971
Applications	181.7	229.6	217.9	255.6	237.5	237.3	254.1	271.8	294.7	330.6	387.5	427.6	465.9	487.7	487.7	493.1
Percentage*	7.8%	26.4%	-5.1%	17.3%	-7.1%	-0.1%	7.1%	7.0%	8.4%	12.2%	17.2%	10.3%	9.0%	4.7%	0.0%	1.1%
Year	1972	1973	1974	1975	1976	1977	1978	1979	1980	1981	1982	1983	1984	1985	1986	1987
Applications	494.7	521.7	515.4	519.2	542.1	550.2	565.5	550.2	529.1	529.4	463.2	477.9	463.6	479.8	499	470.2
Percentage*	0.3%	5.5%	-1.2%	0.7%	4.4%	1.5%	2.8%	-2.7%	-3.8%	0.1%	-12.5%	3.2%	-3.0%	3.5%	4.0%	-5.8%
Year	1988	1989	1990	1991	1992	1993	1994	1995	1996	1997	1998	1999	2000	2001	2002	2003
Applications	466.3	481.2	480.9	494.6	473.9	456.0	452.9	457.4	462.0	466.6						
Percentage*	-0.8%	3.2%	-0.1%	2.8%	-4.2%	-3.8%	-0.7%	1.0%	1.0%	1.0%						

*Percentage of increase or decrease over previous year. Projected receipts based on 1% increase each calendar year.

Source: Civil Aeromedical Institute, Aeromedical Certification Division, Medical Systems Branch.

Table II.B

RECEIPTS OF MEDICAL CERTIFICATE APPLICATIONS BY CLASS *
1965-1994

Calendar Year	Total	First Class	Percent of Total	Second Class	Percent of Total	Third Class	Percent of Total
1965	330,617	52,006	15.7%	109,600	33.2%	169,011	51.1%
1966	387,537	73,903	19.1%	124,593	32.1%	189,041	48.8%
1967	427,596	80,474	18.8%	143,458	33.5%	203,664	47.6%
1968	465,929	87,408	18.8%	173,139	37.2%	205,382	44.1%
1969	478,700	90,666	18.9%	178,699	37.3%	209,335	43.7%
1970	487,700	94,419	19.4%	189,276	38.8%	204,005	41.8%
1971	493,145	91,478	18.5%	204,853	41.5%	196,814	39.9%
1972	494,700	86,573	17.5%	205,597	41.6%	202,530	40.9%
1973	521,700	93,384	17.9%	220,679	42.3%	207,637	39.8%
1974	515,400	91,741	17.8%	214,922	41.7%	208,737	40.5%
1975	519,200	91,379	17.6%	224,814	43.3%	203,007	39.1%
1976	542,159	93,793	17.3%	230,418	42.5%	217,948	40.2%
1977	550,243	97,393	17.7%	230,552	41.9%	222,298	40.4%
1978	565,534	105,755	18.7%	228,476	40.4%	231,303	40.9%
1979	550,188	111,138	20.2%	212,373	38.6%	226,677	41.2%
1980	529,051	118,507	22.4%	197,865	37.4%	212,679	40.2%
1981	529,418	128,649	24.3%	183,708	34.7%	217,061	41.0%
1982	463,241	110,714	23.9%	155,186	33.5%	197,341	42.6%
1983	477,905	114,219	23.9%	171,090	35.8%	192,596	40.3%
1984	463,617	109,877	23.7%	159,948	34.5%	193,792	41.8%
1985	479,849	126,680	26.4%	154,511	32.2%	198,658	41.4%
1986	474,392	133,304	28.1%	146,113	30.8%	194,975	41.1%
1987	470,208	147,175	31.3%	138,241	29.4%	184,792	39.3%
1988	466,326	147,359	31.6%	130,571	28.0%	188,396	40.4%
1989	481,168	162,635	33.8%	128,953	26.8%	189,580	39.4%
1990	480,922	169,765	35.3%	124,559	25.9%	186,598	38.8%
1991	494,612	181,523	36.7%	127,115	25.7%	185,974	37.6%
1992	473,884	177,233	37.4%	121,788	25.7%	174,863	36.9%
1993	455,995	170,086	37.3%	118,559	26.0%	167,350	36.7%
1994	452,920	170,298	37.6%	115,042	25.4%	167,580	37.0%

* The 1965 class distributions were achieved by applying percentages based on card counts of applications performed during 1965 to the total receipts for the year. Class distributions for 1966 through 1994 were based on percentages compiled from the Record of Physical Examinations Computer Submission Summary, AC 8500-3.

Source: Civil Aeromedical Institute, Aeromedical Certification Division, Medical Systems Branch, RIS: AC 8500-3, Record of Physical Examinations Computer Submission Summary Report.

Table II.C

**MEDICAL APPLICATIONS PROCESSING BY THE
AEROMEDICAL CERTIFICATION DIVISION
1994**

Month	Applications Received	Applications Coded for Computer Screening	Applications Screened by Computer *	Applications Requiring Manual Review **	Applications Intra-Office Transmitted ***
January	30,008	32,208	28,508	11,403	86
February	32,576	30,776	30,276	12,110	107
March	41,321	32,021	26,821	10,728	134
April	36,902	18,302	27,902	11,161	134
May	40,885	28,085	28,085	11,234	82
June	43,148	29,148	28,648	11,459	134
SUBTOTAL	224,840	170,540	170,240	68,095	677
July	37,040	43,840	34,940	13,976	51
August	43,714	52,014	41,314	16,526	120
September	38,662	46,362	35,162	14,065	158
October	39,265	28,765	34,365	13,746	90
November	37,204	30,904	45,004	18,002	79
December	32,195	36,295	27,595	11,038	135
SUBTOTAL	228,080	238,180	218,380	87,353	633
TOTAL	452,920	408,720	388,620	155,448	1,310

* Figures reflect the number of submissions to the computer rather than the number of applications because an application may have to be submitted to the computer more than once before it is accepted.

** Total applications rejected for any reason is presently 40% of applications screened by computer.

*** Figures include applications transmitted to the regions and to the Federal Air Surgeon for certification or review. Represents 0.3% of the applications received.

Source: Civil Aeromedical Institute, Aeromedical Certification Division, Medical Systems Branch; RIS: AC 8065-3, Aeromedical Certification Processing Summary.

Table II.D

**AEROMEDICAL CERTIFICATION DIVISION
CORRESPONDENCE SECTION ACTIVITY
1994**

Activity	Frequency	Subtotal	Percent of Total
Certification			
Issued and Corrected Certificates	20,819		
Eligibility Letters	32,452		
Issued or Duplicate Waivers	6,690		
		59,961	56.87%
Further Action Necessary			
Information Requested	30,307		
Medical Flight Test Authorization	4,445		
		34,752	32.96%
Telegram Replies to Airmen/Agency Offices	1,337	1,337	1.27%
Denial Letters			
Final Denials	282		
General Denials	1,760		
Failure to Provide Denials	1,694		
Other Denial Correspondence	1,835		
		5,571	5.28%
Miscellaneous Correspondence*			
AME Error Letters	204		
Other Miscellaneous*	3,608		
		3,812	3.62%
TOTAL		105,433	100.00%

* Includes refund letters, charge letters, second request letters, requests for return of medical certificate, cover letters, replies to airmen and physicians inquiries, and other miscellaneous letters.

Source: Civil Aeromedical Institute, Aeromedical Certification Division, Medical Systems Branch; RIS: AC 8065-3, Aeromedical Certification Processing Summary.

Table II.E

CONSOLIDATED

AEROMEDICAL CERTIFICATION DIVISION COMPUTER TAPE FILE SUMMARY

As of: December 31, 1994

Action	Time Lapse Since Date of Last Examination						Total
	< 7 Months	< 13 Months	< 25 Months	Subtotal	25-36 Months	Over 36 Months	
<u>Certified</u>							
First Class	75,662	44,414	23,323	143,399	13,037	N/A	156,436
Second Class	47,573	53,743	60,990	162,306	31,829	N/A	194,135
Third Class	76,240	74,195	158,011	308,446	83,234	N/A	391,680
SUBTOTAL	199,475	172,352	242,324	614,151	128,100	N/A	742,251
<u>Non-Certified</u>							
Pending	2,789	1,190	2,110	6,089	2,199	N/A	8,288
Denied	1,213	1,787	3,403	6,403	3,260	N/A	9,663
SUBTOTAL	4,002	2,977	5,513	12,492	5,459	N/A	17,951
<u>Link*</u>	N/A	N/A	N/A	N/A	N/A	564,375	564,375
TOTAL	203,477	175,329	247,837	626,643	133,559	564,375	1,324,577
EFFECTIVE STATUS TOTAL							
	Class I = 75,662		Class II = 145,730		Class III = 392,759		

* Abbreviated records maintained on individuals having significant pathology who have not had a physical examination in the past 36 months. These airmen may or may not have been certified.

Source: Civil Aeromedical Institute, Aeromedical Certification Division, Medical Systems Branch.

Table II.F

MEDICAL CERTIFICATION ACTIVITY SUMMARY 1992-1994

Activity	CY 1994	CY 1993	CY 1992
Applications for Medical Certification	452,920	455,995	473,884
New Applications for First Class Medical Certificates*	-	7,133	7,236
New Applications for Second Class Medical Certificates*	-	11,287	12,403
New Applications for Third Class Medical Certificates*	-	49,787	51,123
First Class Combined Student/Medical Certificates	236	1,715	1,769
Second Class Combined Student/Medical Certificates	686	3,895	4,151
Third Class Combined Student/Medical Certificates	1,109	22,102	22,147
Electrocardiograms Received for First Class Pilots	68,717	67,105	70,096
Incoming Correspondence **	70,335	80,243	77,766
Outgoing Correspondence	111,243	126,966	126,883
Applications Containing Medical or Clerical Problems	155,448	180,115	190,439
Number of First Class Active Airmen with Pathology Records	33,502	34,579	34,414
Number of Second Class Active Airmen with Pathology Records	48,418	54,794	54,748
Number of Third Class Active Airmen with Pathology Records	69,196	81,933	78,850

(Continued)

Table II.F (Continued)**MEDICAL CERTIFICATION ACTIVITY SUMMARY
1992-1994**

- * An application receipt is considered a "new application" if the airman has made no indication of previous FAA physical examination and if total flying time equals last six months flying time. Of examinations performed in 1993, 868 or 1.3% new applications were denied, 1,132 or 1.6% were pending, and 66,207 or 97.1% were issued for a total of 68,207 new applications.

The "Record of Physical Examinations Computer Submissions Summary Report," AC 8500-3, was modified during 1969 to reflect the final certification action for each application performed during the previous year. The report is produced in August of each year and reflects data for the previous year.

- ** Includes information requested by the Aeromedical Certification Division and inquiries from airmen or regional offices.

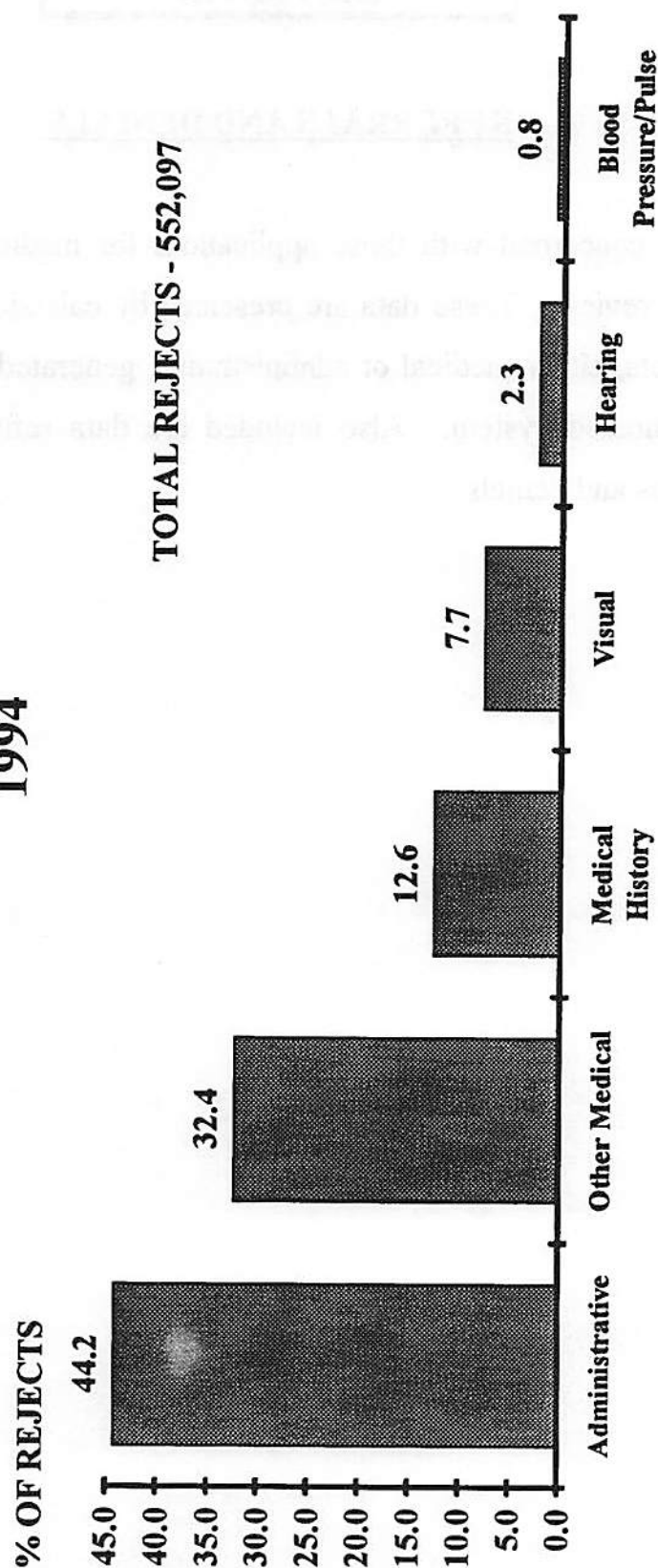
Source: Civil Aeromedical Institute, Aeromedical Certification Division, Medical Systems Branch; RIS: AC 8500-1, 8500-3, and 8065-3.

SECTION III**REFERRALS AND DENIALS**

This section is concerned with those applications for medical certification which require manual review. These data are presented by calendar year and reflect the number of rejects, either medical or administrative, generated when the application enters the automated system. Also included are data reflecting the number of special issuances and denials.

FIGURE III.A

**DISTRIBUTION OF CAUSES FOR
REVIEW BY MAJOR CATEGORY
1994**



Source: Civil Aeromedical Institute, Aeromedical Certification Division, Program Support Branch; RIS: AC 8500-3, Aeromedical Certification Processing Summary.

Table IILB

**DISTRIBUTION OF CAUSES FOR REVIEW BY MAJOR AND MINOR CATEGORIES
1994**

Reject	Major Category Totals	Percent	Minor Categories	Percent
<u>Administrative</u>	244,322	44.2		
AME Number Rejects			4,251	0.8
No Ticket Flag Set			67,072	12.1
Previous Exam Has No Ticket Flag			4,804	0.9
Clerical Reject			6,320	1.2
Waiver Rejects			1,321	0.2
Re-Submit Exam to Computer			4,460	0.8
Date of ECG Rejects			4,605	0.8
No Match Between New and Previous Exams			2,328	0.4
Discrepancy in Name/DOB			15,762	2.9
Discrepancy in Social Security Number			9,607	1.7
Other*			123,792	22.4
<u>Visual</u>	42,711	7.7		
Distant Vision			27,246	4.9
Near Vision			11,860	2.1
Field of Vision			453	0.1
Color Vision			3,152	0.6
<u>Other Medical Conditions</u>	178,358	32.4		
Current Exam Pending/Denied			14,628	2.7
Urinalysis			3,643	0.7
Pathology Codes			81,299	14.7
Abnormalities (Items 25-48)			2,763	0.5
Medication			58,007	10.5
Restrictions			18,018	3.3
<u>Medical History</u>	69,826	12.6		
Previous Exam Special Case			289	0.1
Medical History			46,146	8.4
Previous Exam Pending/Denied			2,294	0.4
Previous Exam Exemption/Special Issuance Case			4,079	0.7
Input Exam Exemption/Special Issuance Case			1,187	0.2
Follow-up Material Requested			11,368	2.0
Current Information with Previous Record			2,478	0.4
Previous Exam Sent to Washington or Region/ECG Pending			297	0.1
Follow-up Not Required This Exam			1,688	0.3
<u>Hearing</u>	12,453	2.3		
Hearing			12,453	2.3
<u>Blood Pressure/Pulse</u>	4,427	0.8		
Blood Pressure			2,965	0.5
Pulse			1,462	0.3
TOTAL REJECT MESSAGES	552,097	100.0		

* Rejects resulting from validity checks against established edit criteria for height, weight, and address; rejects for certificates not issued due to class, no ticket flag, or bad address; and pathology number assigned rejects.

Source: Civil Aeromedical Institute, Aeromedical Certification Division, Medical Systems Branch; RIS: AC 8065-3, Aeromedical Certification Processing Summary.

Table III.C

SPECIAL ISSUANCES AND DENIALS**As of: December 31, 1994**

Category Issuance/Denial	First Class	Second Class	Third Class	Total
<u>Issuances</u>				
NTSB Issuance	4	5	4	13
Special Issuance by AAM-300	841	389	2,839	4,069
Special Issuance by AAM-1	363	117	252	732
Special Issuance by RFS	1	13	64	78
Total Special Issuances	1,209	524	3,159	4,892
<u>Denials</u>				
Final Denials by AAM-300	42	76	376	494
Final Denials by AAM-1	16	4	8	28
Final Denials by RFS	-	-	-	-
Total Denials	58	80	384	522

* Figures include those cases coded under special issuances or denials on active master file.

Source: Civil Aeromedical Institute, Aeromedical Certification Division, Medical Systems Branch; RIS: AC 8065-1, Pathology Code Summary.

SECTION IV

GENERAL AIRMAN POPULATION DATA

This section reflects general data concerning the active airman population. The data presented are as of December 31, 1994, and cover the preceding 25 months. The 25-month time period was used to describe the active airman population because a medically certified airman is considered "active" for a maximum of 25 months after his/her last FAA physical examination, i.e., regardless of the class of medical certificate issued, it is valid for third class purposes for a period of time up to 25 months. Those airmen who have allowed their medical certification to lapse into a time period greater than 25 months would be considered "inactive" airmen.

Data are presented by class of medical certificate issued and do not include applications pending or denied. Table IV.A presents data by "effective status" of medical certification. This refers to the time lapse since the certificate was issued as opposed to the class issued. Present FAA regulations stipulate that air transport pilots must be first class medically certified at six-month intervals, commercial pilots must be second class medically certified annually, and general aviation airmen must obtain third class medical certification every two years. Thus, an airman may be first or second class medically certified and the time lapse since examination would reduce the "effective status" to a lower class.

Table IV.A

REGIONAL DISTRIBUTION OF ACTIVE AIRMEN BY CLASS OF CERTIFICATE AND EFFECTIVE STATUS*
As of: December 31, 1994

Region	First Class				Second Class			Third Class		Total Active Airmen				
	First Class Certified	Effective Status (Class)**			Second Class Certified	Effective Status (Class)**		Third Class Certified	Effective Status (Class)**	Total Airmen Certified	Percent of Total Airmen	Effective Status (Class)**		
		1	2	3		2	3					1	2	3
Alaskan	1,505	744	562	199	2,851	1,918	933	4,442	4,442	8,798	1.4	744	2,480	5,574
Central	4,042	2,175	1,278	589	7,657	4,941	2,716	17,365	17,365	29,064	4.7	2,175	6,219	20,670
Eastern	16,257	8,512	5,160	2,585	18,095	11,324	6,771	39,438	39,438	73,790	12.0	8,512	16,484	48,794
Great Lakes	20,091	10,871	6,102	3,118	23,433	15,053	8,380	56,258	56,258	99,782	16.2	10,871	21,155	67,756
New England	6,015	3,252	1,879	884	6,697	4,049	2,648	14,634	14,634	27,346	4.5	3,252	5,928	18,166
Northwest-Mountain	14,068	7,755	4,253	2,060	15,466	9,917	5,549	30,418	30,418	59,952	9.8	7,755	14,170	38,027
Southern	29,945	16,195	9,497	4,253	26,378	16,888	9,490	49,841	49,841	106,164	17.3	16,195	26,385	63,584
Southwest	17,167	9,664	5,223	2,280	19,346	12,663	6,683	31,818	31,818	68,331	11.1	9,664	17,886	40,781
Western-Pacific	20,801	11,405	6,084	3,312	23,776	14,955	8,821	51,731	51,731	96,308	15.7	11,405	21,039	63,864
U.S. TOTAL	129,891	70,573	40,038	19,280	143,699	91,708	51,991	295,945	295,945	569,535	92.7	70,573	131,746	367,216
Military***	190	40	101	49	11,546	5,639	5,907	4,551	4,551	16,287	2.7	40	5,740	10,507
International	13,318	5,049	4,275	3,994	7,061	3,969	3,092	7,950	7,950	28,329	4.6	5,049	8,244	15,036
TOTAL	143,399	75,662	44,414	23,323	162,306	101,316	60,990	308,446	308,446	614,151	100.0	75,662	145,730	392,789
Percent of Total Certified Airmen	(23.3)				(26.5)			(50.2)		(100.0)				

* Figures are based on a 25-month summary from the computer tape files; only certified airmen are included.

** Refers to the time lapse since the certificate was issued as opposed to the class issued. Present FAA regulations stipulate that air transport pilots must be first class medically certified at six-month intervals, commercial pilots must be second class medically certified annually, and general aviation airmen must obtain third class medical certification every two years. Thus, an airman may be first or second class medically certified and the time lapse since examination would reduce the "effective status" to a lesser class.

*** Military airmen were tabulated on the basis of the physical examination being performed at a military examining facility.

Source: Civil Aeromedical Institute, Aeromedical Certification Division, Medical Systems Branch; RIS: AC 8065-4, Examination Time Period Summary.

Table IV.B

**ACTIVE AIRMEN'S STATE OF RESIDENCE
BY SEX AND CLASS OF CERTIFICATE ISSUED***

As of: December 31, 1994

State	First Class		Second Class		Third Class		Total Airmen	
	Male	Female	Male	Female	Male	Female	Male	Female
Alabama	866	15	2,632	70	3,817	248	7,315	333
Alaska	1,452	53	2,837	169	4,150	418	8,439	640
Arizona	3,680	183	3,721	222	6,134	608	13,535	1,013
Arkansas	561	22	1,759	32	2,692	170	5,012	224
California	13,604	761	18,285	1,002	39,006	3,443	70,895	5,206
Colorado	4,701	298	3,905	229	6,036	553	14,642	1,080
Connecticut	1,950	95	1,596	92	3,232	254	6,778	441
Delaware	301	13	434	14	701	46	1,436	73
District of Columbia	68	5	121	9	232	34	421	48
Florida	12,744	578	11,573	484	17,571	1,592	41,888	2,654
Georgia	5,733	129	3,532	128	6,769	469	16,034	726
Hawaii	934	54	922	51	683	53	2,539	158
Idaho	489	13	1,237	46	2,405	183	4,131	242
Illinois	5,006	309	5,209	321	10,521	766	20,736	1,396
Indiana	1,913	89	2,551	113	6,267	394	10,731	596
Iowa	543	20	1,590	48	3,758	205	5,891	273
Kansas	920	28	2,457	98	4,461	300	7,838	426
Kentucky	1,558	56	1,373	47	2,824	205	5,755	308
Louisiana	1,185	33	2,293	60	2,643	162	6,121	255
Maine	429	18	857	33	1,887	131	3,173	182
Maryland	1,543	70	2,195	119	4,196	417	7,934	606
Massachusetts	1,591	85	2,487	144	5,317	441	9,395	670
Michigan	2,708	145	4,091	230	9,776	750	16,575	1,125
Minnesota	3,935	255	3,062	154	7,144	469	14,141	878
Mississippi	540	19	1,420	29	1,914	135	3,874	183
Missouri	1,975	62	2,703	120	5,842	437	10,520	619
Montana	348	10	1,109	37	1,938	152	3,395	199
Nebraska	478	17	1,213	33	2,374	162	4,065	212
Nevada	1,550	71	1,287	60	2,233	212	5,070	343
New Hampshire	1,298	50	974	64	1,700	146	3,972	260
New Jersey	2,523	107	2,672	157	5,909	476	11,104	740
New Mexico	741	32	1,286	69	2,025	177	4,052	278
New York	3,242	170	4,586	198	9,896	781	17,724	1,149
North Carolina	3,213	141	3,405	111	6,326	436	12,944	688
North Dakota	556	33	869	23	1,222	74	2,647	130
Ohio	3,067	151	4,405	215	10,323	759	17,795	1,125
Oklahoma	1,275	54	3,091	151	4,173	344	8,539	549
Oregon	1,026	54	2,452	145	5,455	444	8,933	643
Pennsylvania	4,086	210	4,418	225	9,096	654	17,600	1,089
Rhode Island	223	5	325	23	656	64	1,204	92
South Carolina	1,025	37	1,597	33	3,054	187	5,676	257
South Dakota	236	10	669	20	1,152	69	2,057	99
Tennessee	3,185	107	2,922	137	4,930	347	11,037	591
Texas	12,910	385	11,756	417	18,558	1,453	43,224	2,255

(Continued)

Table IV.B (Continued)**ACTIVE AIRMEN'S STATE OF RESIDENCE
BY SEX AND CLASS OF CERTIFICATE ISSUED*****As of: December 31, 1994**

State	First Class		Second Class		Third Class		Total Airmen	
	Male	Female	Male	Female	Male	Female	Male	Female
Utah	1,592	40	1,308	55	2,584	164	5,484	259
Vermont	266	7	348	28	818	86	1,432	121
Virginia	3,485	148	3,727	199	5,704	503	12,916	850
Washington	5,014	232	4,994	329	9,049	864	19,057	1,425
West Virginia	227	9	595	10	1,215	65	2,037	84
Wisconsin	1,621	70	2,355	111	6,479	468	10,455	649
Wyoming	244	11	468	24	943	96	1,655	131
SUBTOTAL**	124,360	5,569	147,673	6,938	277,790	22,066	549,823	34,573
International	13,181	289	7,393	302	7,963	627	28,537	1,218
TOTAL AIRMEN	137,541	5,858	155,066	7,240	285,753	22,693	578,360	35,791

* Totals are based on active airmen certified within the past 25 months.

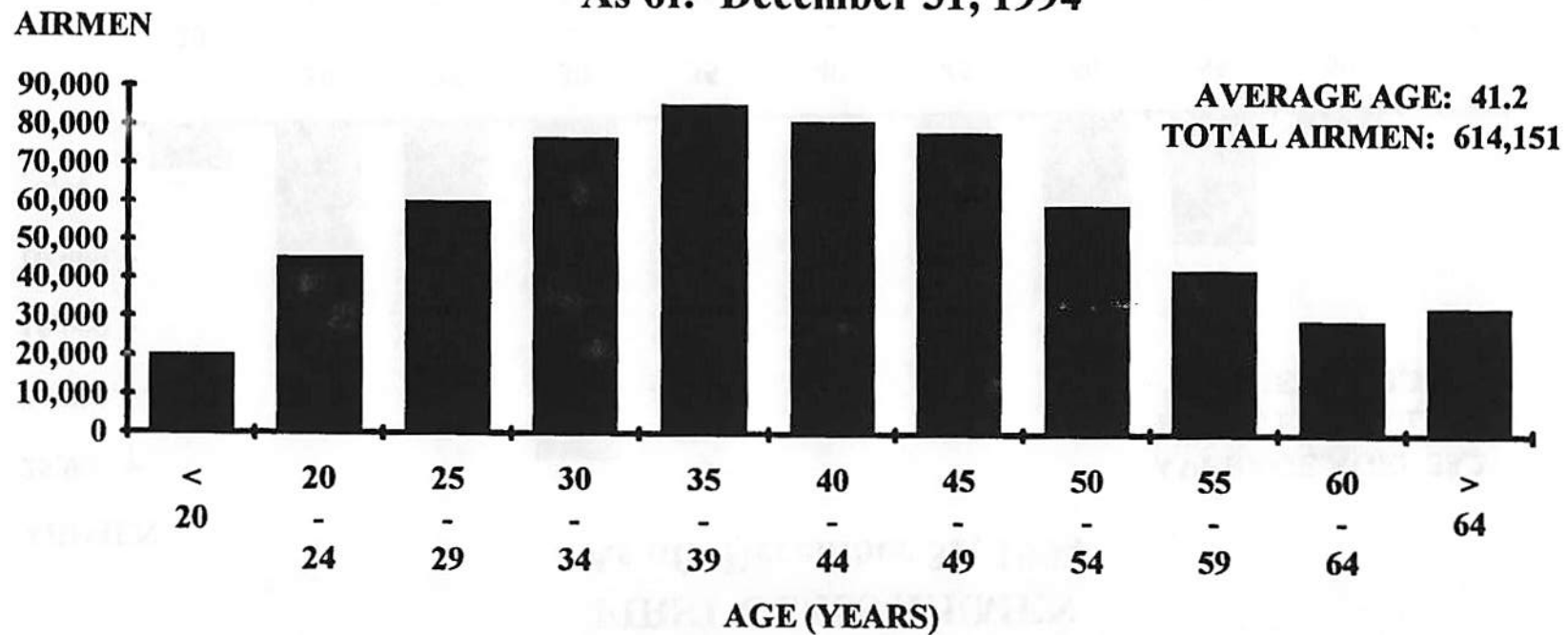
** Includes NASA and Military.

Source: Civil Aeromedical Institute, Aeromedical Certification Division, Medical Systems Branch; RIS: AC 8500-1, Aeromedical Certification Statistical Handbook Computer Run.

FIGURE IV.C

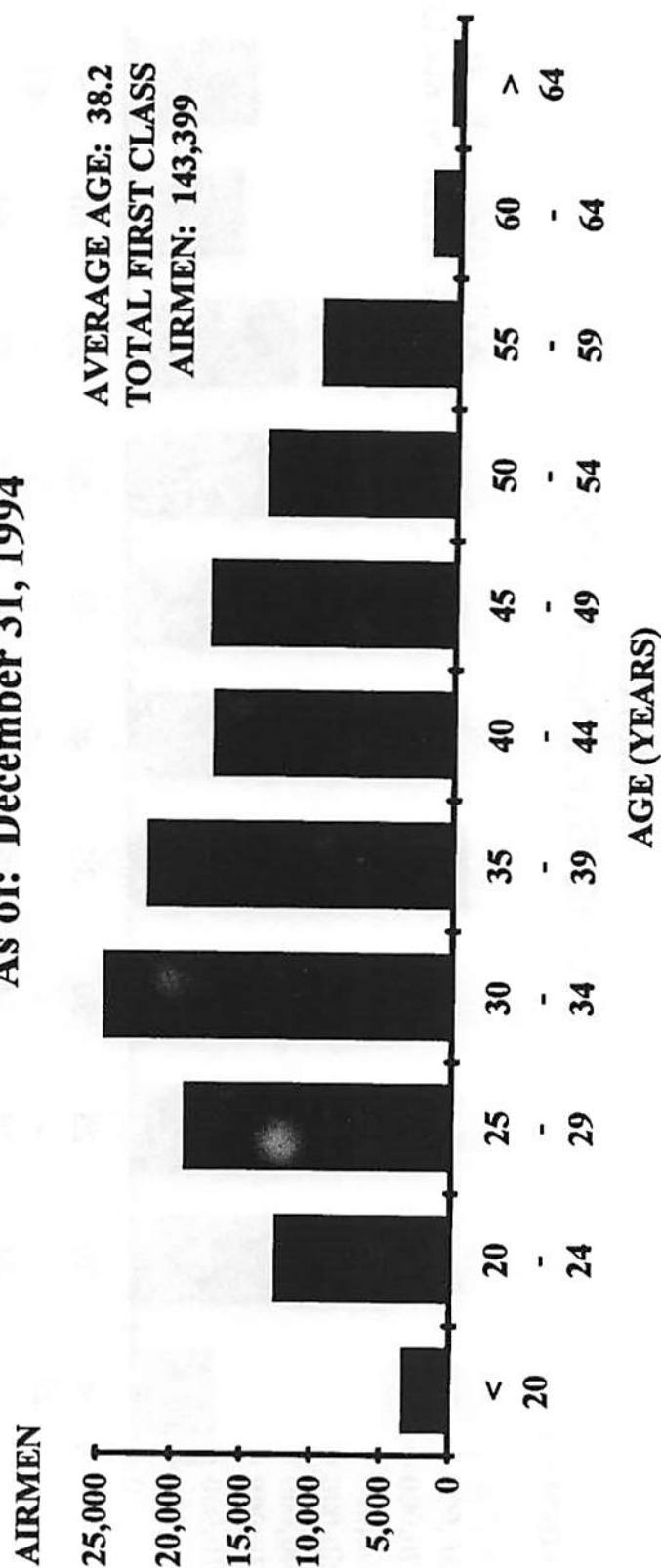
**AGE DISTRIBUTION OF MEDICALLY CERTIFIED
AIRMEN**

As of: December 31, 1994



Brackets are indicative of age class intervals wherein magnitudes are not apparent on this scale. In such instances, the accompanying table (Table IV.G) should be consulted for frequencies.

Source: Civil Aeromedical Institute, Aeromedical Certification Division, Medical Systems Branch; RIS: AC 8500-1, Aeromedical Certification Statistical Handbook Computer Run.

FIGURE IV.D**AGE DISTRIBUTION OF MEDICALLY CERTIFIED****FIRST CLASS AIRMEN****As of: December 31, 1994**

Brackets are indicative of age class intervals wherein magnitudes are not apparent on this scale. In such instances, the accompanying table (Table IV.G) should be consulted for frequencies.

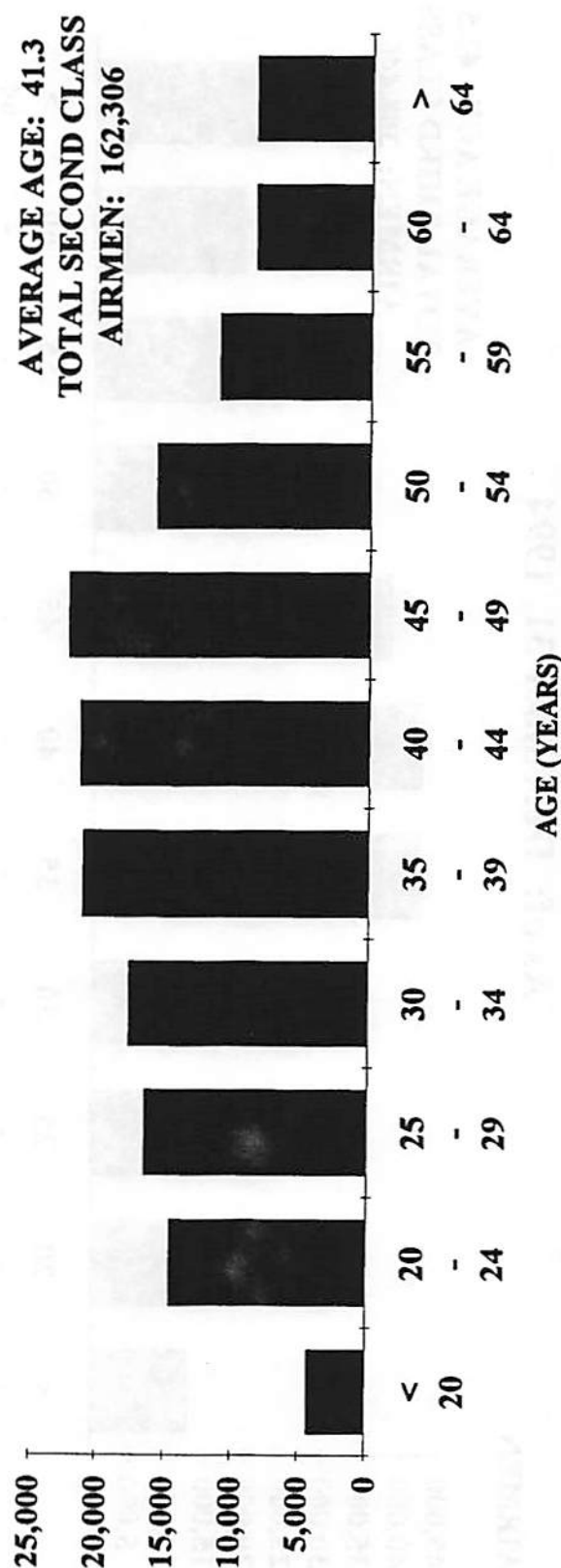
Source: Civil Aeromedical Institute, Aeromedical Certification Division, Medical Systems Branch; RIS: AC 8500-1, Aeromedical Certification Statistical Handbook Computer Run.

FIGURE IV.E

AGE DISTRIBUTION OF MEDICALLY CERTIFIED SECOND CLASS AIRMEN

As of: December 31, 1994

AIRMEN



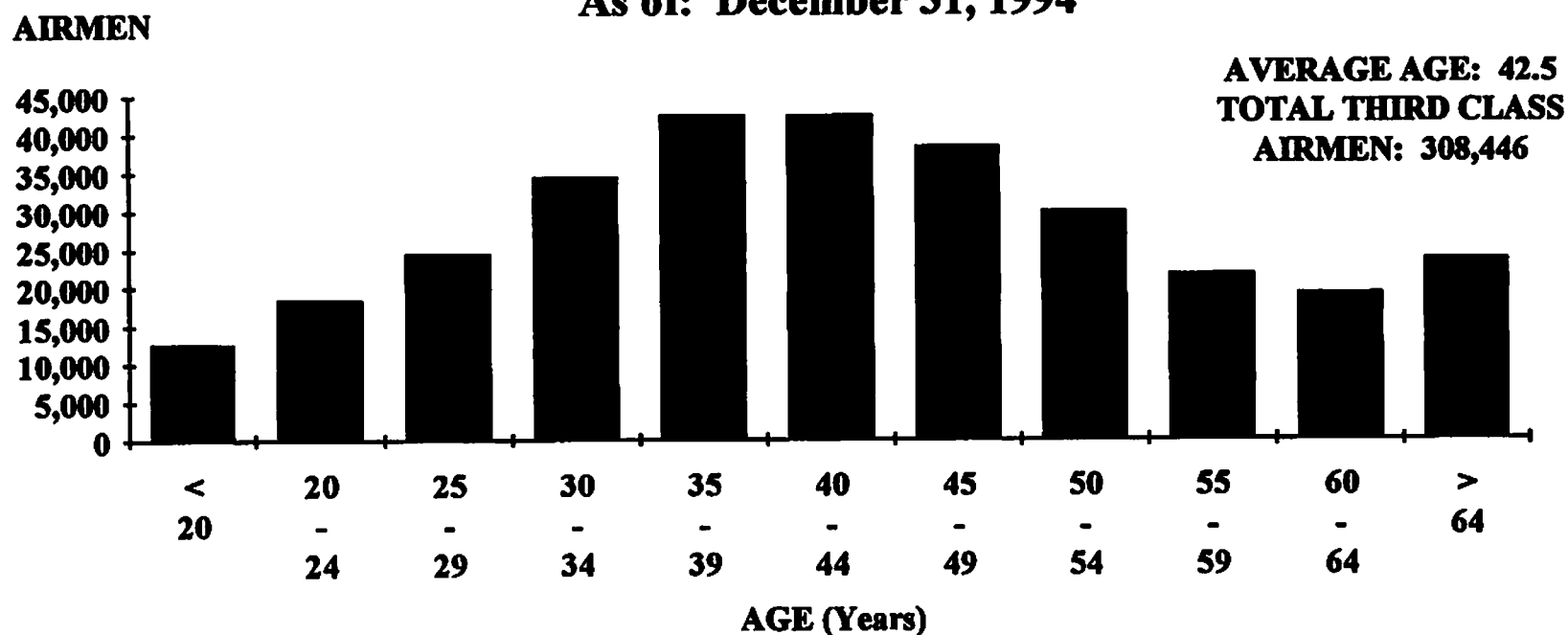
Brackets are indicative of age class intervals wherein magnitudes are not apparent on this scale. In such instances, the accompanying table (Table IV.G) should be consulted for frequencies.

Source: Civil Aeromedical Institute, Aeromedical Certification Division, Medical Systems Branch; RIS: AC 8500-1, Aeromedical Certification Statistical Handbook Computer Run.

FIGURE IV.F

**AGE DISTRIBUTION OF MEDICALLY CERTIFIED
THIRD CLASS AIRMEN**

As of: December 31, 1994



Brackets are indicative of age class intervals wherein magnitudes are not apparent on this scale. In such instances, the accompanying table (Table IV.G) should be consulted for frequencies.

Source: Civil Aeromedical Institute, Aeromedical Certification Division, Medical Systems Branch; RIS: AC 8500-1, Aeromedical Certification Statistical Handbook Computer Run.

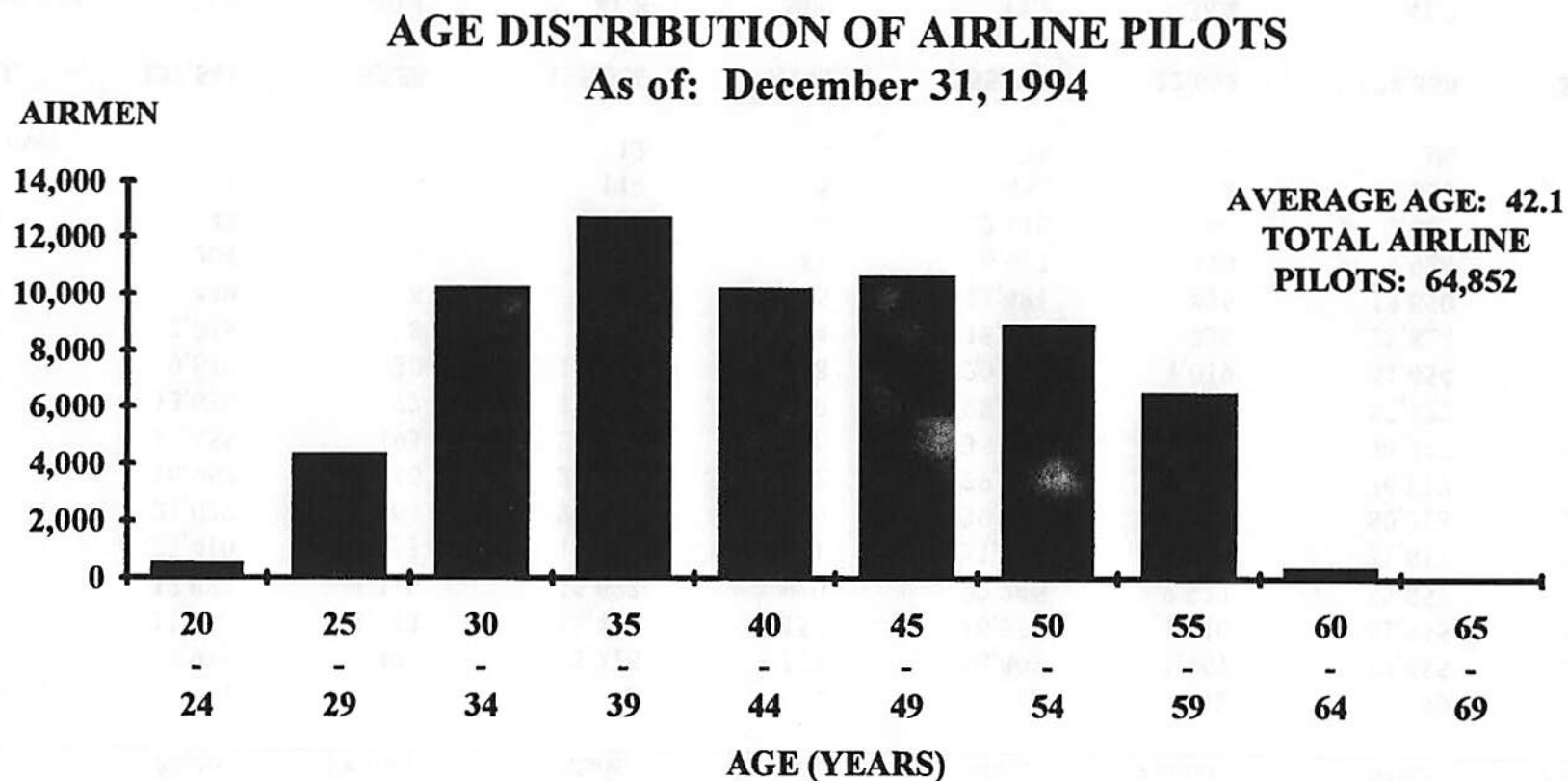
Table IV.G

AGE DISTRIBUTION OF ACTIVE AIRMEN BY CLASS AND SEX*
As of: December 31, 1994

Age	First Class		Second Class		Third Class		Total Airmen	
	Male	Female	Male	Female	Male	Female	Male	Female
Less than 15	1	-	2	-	46	12	49	12
15 - 19	2,936	491	3,716	527	10,803	1,867	17,455	2,885
20 - 24	11,575	1,113	13,425	1,157	16,555	1,910	41,555	4,180
25 - 29	17,983	1,310	15,623	910	22,246	2,327	55,852	4,547
30 - 34	23,410	1,353	16,788	941	31,619	2,934	71,817	5,228
35 - 39	21,027	864	20,140	1,060	39,146	3,388	80,313	5,312
40 - 44	16,962	416	20,553	892	39,302	3,254	76,817	4,562
45 - 49	17,455	193	21,675	666	35,817	2,694	74,947	3,553
50 - 54	13,630	72	15,399	430	28,148	1,892	57,177	2,394
55 - 59	9,840	30	10,960	258	20,654	1,019	41,454	1,307
60 - 64	2,016	8	8,409	184	18,399	736	28,824	928
65 - 69	449	8	4,720	135	13,481	436	18,650	579
70 - 74	204	-	2,803	61	6,917	170	9,924	231
75 - 79	48	-	727	14	2,110	46	2,885	60
80 - 84	5	-	114	5	432	8	551	13
85 and over	-	-	12	-	78	-	90	-
TOTAL	137,541	5,858	155,066	7,240	285,753	22,693	578,360	35,791
Average Age	38.5	30.1	41.8	36.0	43.2	38.2	41.7	36.4

* Totals are based on active certified airmen within the past 25 months.

Source: Civil Aeromedical Institute, Aeromedical Certification Division, Medical Systems Branch; RIS: 8500-1, Aeromedical Certification Statistical Handbook Computer Run.

FIGURE IV.H

Source: Civil Aeromedical Institute, Aeromedical Certification Division, Medical Systems Branch; RIS: AC 8500-1, Aeromedical Certification Statistical Handbook Computer Run.

Table IV.I

AGE DISTRIBUTION OF AIRLINE PILOTS*

As of: December 31, 1994

Age Groups (1)	Airline Pilots (2)	Certified First Class Airmen** (3)	<u>Percent of Total</u>	
			Airline Pilots (4)	Certified First Class Airmen (5)
20 - 24	552	12,688	0.9	9.1
25 - 29	4,389	19,293	6.8	13.8
30 - 34	10,283	24,763	15.9	17.7
35 - 39	12,754	21,891	19.7	15.7
40 - 44	10,231	17,378	15.8	12.4
45 - 49	10,689	17,648	16.4	12.6
50 - 54	8,963	13,702	13.7	9.8
55 - 59	6,530	9,870	10.1	7.2
SUBTOTAL	64,391	137,233	99.3	98.3
60 - 64	411	2,024	0.6	1.4
65 - 69	50	457	0.1	0.3
TOTAL	64,852	139,714	100.0	100.0
Average Age	42.1	38.6		

* Airline Pilots, Column (2), were determined by the combination of first class medical certificate issuance during the preceding 13 months and an occupation of "pilot for an airline". Figures in Column (3) were based on first class medical certificate issuance during the preceding 25 months.

** Extreme age groups were deleted to more closely compare with age requirements for airline pilots. Under Part 121, Federal Aviation Regulations, no person may serve as a pilot of an airplane engaged in air carrier operations if that person has reached his/her 60th birthday. However, some airmen falling into this category still list their occupation as "pilot" even though their actual duties do not involve control of the airplane.

Source: Civil Aeromedical Institute, Aeromedical Certification Division, Medical Systems Branch; RIS: AC 8500-1, Aeromedical Certification Statistical Handbook Computer Run.

Table IV.J

HEIGHT DISTRIBUTION OF ACTIVE AIRMEN BY CLASS AND SEX***As of: December 31, 1994**

Height in Inches	First Class		Second Class		Third Class		Total Airmen	
	Male	Female	Male	Female	Male	Female	Male	Female
Less than 59	143	34	199	59	449	234	791	327
59	57	11	96	33	200	134	353	178
60	116	53	189	136	439	559	744	748
61	77	114	147	228	381	846	605	1,188
62	99	301	170	559	442	1,916	711	2,776
63	176	536	337	706	845	2,467	1,358	3,709
64	622	833	1,007	1,063	2,139	3,410	3,768	5,306
65	1,476	868	2,106	1,007	4,370	3,218	7,952	5,093
66	3,741	983	5,154	1,075	10,291	3,432	19,186	5,490
67	7,363	833	9,107	942	17,188	2,622	33,658	4,397
68	12,773	619	14,948	641	28,519	1,828	56,240	3,088
69	15,939	344	18,533	420	33,351	1,038	67,823	1,802
70	21,058	201	23,554	205	43,600	586	88,212	992
71	19,401	71	21,832	84	40,808	219	82,041	374
72	23,185	38	24,764	49	43,540	102	91,489	189
73	12,561	11	13,375	19	24,238	40	50,174	70
74	9,749	1	9,994	8	17,720	18	37,463	27
75	4,920	3	5,031	1	8,883	12	18,834	16
Over 75	4,085	4	4,523	5	8,350	12	16,958	21
TOTAL	137,541	5,858	155,066	7,240	285,753	22,693	578,360	35,791
Average Height	70.7	65.7	70.5	65.3	70.5	65.0	70.5	65.2

* Totals are based on active airmen certified within the past 25 months. Height, as reported by the airmen, is rounded to the nearest inch.

Source: Civil Aeromedical Institute, Aeromedical Certification Division, Medical Systems Branch; RIS: AC 8500-1, Aeromedical Certification Statistical Handbook Computer Run.

Table IV.K

WEIGHT DISTRIBUTION OF ACTIVE AIRMEN BY CLASS AND SEX*

As of: December 31, 1994

Weight in Pounds	First Class		Second Class		Third Class		Total Airmen	
	Male	Female	Male	Female	Male	Female	Male	Female
Less than 90	14	5	29	10	51	28	94	43
90 - 99	6	20	7	55	33	173	46	248
100 - 109	59	250	71	317	168	971	298	1,538
110 - 119	243	786	231	867	633	2,688	1,107	4,341
120 - 129	810	1,418	983	1,287	2,128	4,184	3,921	6,889
130 - 139	2,598	1,285	3,007	1,444	5,660	4,404	11,265	7,133
140 - 149	6,305	875	6,780	1,110	12,032	3,389	25,117	5,374
150 - 159	12,661	531	12,600	755	22,343	2,421	47,604	3,707
160 - 169	19,040	279	18,877	458	32,511	1,547	70,428	2,284
170 - 179	22,680	145	22,745	318	40,055	987	85,480	1,450
180 - 189	22,342	101	23,662	216	42,123	689	88,127	1,006
190 - 199	17,409	72	19,699	120	35,903	422	73,011	614
200 - 209	12,082	31	15,227	83	28,494	250	55,803	364
210 - 219	8,325	15	10,789	58	20,676	171	39,790	244
220 - 229	5,393	19	7,626	42	14,864	131	27,883	192
230 - 239	3,188	11	4,749	37	10,032	87	17,969	135
240 - 249	1,839	7	3,033	15	6,532	49	11,404	71
Over 249	2,547	8	4,951	48	11,515	102	19,013	158
TOTAL	137,541	5,858	155,066	7,240	285,753	22,693	578,360	35,791
Average								
Weight	184.2	137.1	187.6	142.4	189.1	142.2	187.5	141.4

* Totals are based on active airmen certified within the past 25 months. Weight, as reported by the airmen, is rounded to the nearest pound.

Source: Civil Aeromedical Institute, Aeromedical Certification Division, Medical Systems Branch; RIS: AC 8500-1, Aeromedical Certification Statistical Handbook Computer Run.

Table IV.L
ACTIVE AIRMEN BY OCCUPATION, CLASS AND SEX*
As of: December 31, 1994

Occupation Code	First Class		Second Class		Third Class		Total		Percent
	Male	Female	Male	Female	Male	Female	Male	Female	
1 Pilot (Scheduled or Non-Scheduled Airline)	67,879	1,866	1,703	55	102	3	69,684	1,924	11.7
2 Flight Engineer	1,113	33	1,781	12	38	1	2,932	46	0.5
3 Flight Navigator/Flight Radio Operator	15	-	53	2	5	-	73	2	0.0+
4 Business or Executive Pilot	24,882	754	393	22	39	1	25,314	777	4.2
5 Commercial Pilot (Self Employed)	44	-	3,487	106	20	-	3,551	106	0.6
6 Commercial Pilot (Not Self Employed)	344	13	18,580	451	68	-	18,992	464	3.2
7 Aero Application (Agriculture)	114	4	2,235	4	29	-	2,378	8	0.4
8 Air Traffic Controller**	30	-	1,087	94	39	6	1,156	100	0.2
9 Flight Instructor	4,749	563	3,952	439	34	4	8,735	1,006	1.6
0 Aircraft Mechanic & Fixed Base Operator	410	2	2,148	24	375	5	2,933	31	0.5
X Not Given or Non-Aeronautical Occupation	37,943	2,621	119,618	6,028	284,937	22,654	442,498	31,303	77.1
F Flight Service Station Specialist	18	2	29	3	67	19	114	24	0.0+
TOTAL	137,541	5,858	155,066	7,240	285,753	22,693	578,360	35,791	100.0

* Totals are based on active airmen certified within the past 25 months. Occupation was based on response by the airmen in Block 11 of FAA Form 8500-8; if not given, occupation was classified as "non-aeronautical". Basis for percentage computations is number in each occupation category to total airmen.

** Includes military ATCs and civilian (FAA) ATCs who are also pilots and/or were issued a medical certificate.

Table IV.M

EMPLOYERS OF ACTIVE AIRMEN BY CLASS OF CERTIFICATE ISSUED*
As of: December 31, 1994

Employer	First Class	Second Class	Third Class	Total	Major Percent of Total
Air Wisconsin	130	3	6	139	
Alaska Airlines	768	195	4	967	
Aloha Airlines	187	24	-	211	
American Airlines	8,413	1,588	50	10,051	
American Eagle	1,193	16	3	1,212	
America West	778	29	9	816	
Aspen Airways	3	-	-	3	
Atlantic Southeast	545	15	1	561	
Big Sky Airlines	6	-	-	6	
British Airways	29	5	3	37	
Britt Airways	9	-	-	9	
Business Express	459	9	7	475	
China Airlines	110	2	1	113	
Comair, Inc.	692	65	4	761	
Continental Airlines	4,305	69	21	4,395	
Delta Airlines	8,737	64	42	8,843	
Eastern Airlines	9	3	-	12	
Evergreen Airlines	150	68	2	220	
Federal Express	2,093	243	16	2,352	
Florida Airlines	16	3	-	19	
Hawaiian Airlines	211	38	-	249	
Henson Airlines	32	4	-	36	
Horizon Airlines	589	38	-	627	
Japan Airlines	49	171	4	224	
KLM - Royal Dutch Airlines	29	1	2	32	
Korean Airlines	604	96	-	700	
Lufthansa-German Airlines	57	41	2	100	
Mesa Airlines	402	19	2	423	
Mesaba Airlines	338	9	3	350	
Metro Airlines	8	1	-	9	
Midway Airlines	40	2	-	42	
Nashville Eagle	3	1	-	4	
Northwest Airlines	5,029	74	86	5,189	
Pan Amer. World Airways	5	1	3	9	
Pennsylvania Airlines	35	-	-	35	
Piedmont Aviation	297	18	1	316	
Saudi Arabian Airlines	1,129	115	1	1,245	
Simmons	350	4	1	355	
Southwest Airlines	1,620	17	17	1,654	
Trans World Airlines	2,596	80	7	2,683	
U.S. Air	5,189	461	37	5,687	
United Airlines	7,588	664	32	8,284	
West Air	326	42	1	369	
World Airways	162	32	1	195	
Zantop Airways	93	7	-	100	
SUBTOTAL - ALL AIRLINES	55,413	4,337	369	60,119	(9.8)

(Continued)

Table IV.M (Continued)

EMPLOYERS OF ACTIVE AIRMEN BY CLASS OF CERTIFICATE ISSUED*
As of: December 31, 1994

Employer	First Class	Second Class	Third Class	Total	Major Percent of Total
Federal Aviation Administration (FAA)	474	5,019	236	5,729	(0.9)
Government, other than Military or FAA, includes					
State and Local Government	405	973	96	1,474	(0.2)
Aircraft Industry	221	240	89	550	(0.1)
Industry, other than Aircraft	1,074	954	149	2,177	(0.4)
Fixed Base Operation (Flying schools, etc.)	3,875	5,442	113	9,430	(1.5)
Self Employed	2,702	5,830	424	8,956	(1.5)
Other	37,125	17,213	1,269	55,607	(9.1)
Non-Aeronautical	37,434	114,364	305,254	457,052	(74.4)
Air Force	2,673	3,651	163	6,487	(1.1)
Army	414	2,181	48	2,643	(0.4)
Coast Guard	117	118	7	242	(0.0+)
Marines and Navy	1,398	1,892	128	3,418	(0.6)
National Aeronautics and Space Administration (NASA)	74	92	101	267	(0.0+)
SUBTOTAL - ALL OTHERS	87,986	157,969	308,077	554,032	(90.2)
TOTAL	143,399	162,306	308,446	614,151	(100.0)

* Totals are based on active airmen certified within the past 25 months. Employer data are provided by the airmen in Block 12 of FAA Form 8500-8. If blank or other than aeronautical employer is reflected, it is classified as "not applicable".

Source: Civil Aeromedical Institute, Aeromedical Certification Division, Medical Systems Branch;
 RIS: AC 8500-1, Aeromedical Certification Statistical Handbook Computer Run.

SECTION V**MEDICAL CHARACTERISTICS OF THE AIRMAN POPULATION**

This section presents medical characteristics of the active airman population (those airmen certified within the preceding 25 months) as of December 31, 1994, by class of medical certificate issued.

Table V.A

ACTIVE AIRMEN BY NUMBER OF RESTRICTIONS CARRIED, CLASS AND SEX***As of: December 31, 1994**

Number of Restrictions	First Class		Second Class		Third Class		Total Airmen		Total Airmen	Total Restrictions
	Male	Female	Male	Female	Male	Female	Male	Female		
1	55,313	1,993	86,278	3,827	155,143	12,363	296,734	18,183	314,917	314,917
2	826	9	1,809	40	8,397	181	11,032	230	11,262	22,524
3	36	-	174	-	390	9	600	9	609	1,827
4	3	-	8	-	7	-	18	-	18	72
5	-	-	-	-	1	-	1	-	1	5
6	-	-	-	-	1	-	1	-	1	6
More than 6	-	-	-	-	-	-	-	-	-	-
Total Airmen	56,178	2,002	88,269	3,867	163,939	12,553	308,386	18,422	326,808	339,351

* Figures are based on active airmen certified within the past 25 months.

Source: Civil Aeromedical Institute, Aeromedical Certification Division, Medical Systems Branch; RIS: AC 8500-1, Aeromedical Certification Statistical Handbook Run.

Table V.B

FREQUENCY OF RESTRICTIONS AMONG ACTIVE AIRMEN BY CLASS AND SEX*
As of: December 31, 1994

Restriction	First Class		Second Class		Third Class		Total Airmen	
	Male	Female	Male	Female	Male	Female	Male	Female
Must Have Available Glasses For Near Vision	15,987	100	16,370	385	34,956	1,900	67,313	2,385
Must Wear Corrective Lenses	27,795	1,611	44,611	2,465	78,729	7,246	151,135	11,322
Must Wear Corrective Lenses for Near and Distant Vision	5,155	103	11,581	380	19,740	1,304	36,476	1,787
Must Wear Lenses for Distant/ Possess Glasses for Near Vision	6,737	175	14,887	620	26,173	1,987	47,797	2,782
Must Wear Prismatic Correction	5	-	8	-	17	-	30	-
Must Wear Corrective Lenses: Extra Pair Must Be Available	83	3	112	5	172	15	367	23
Must Wear Hearing Aid	59	1	215	3	592	27	866	31
Must Wear Artificial Limb	19	-	62	1	145	1	226	2
Oxygen Required when Flying Above 7,999 Feet	-	-	-	-	5	-	5	-
Passenger Carrying Prohibited	1	1	5	-	13	-	19	1

(Continued)

Table V.B (Continued)

FREQUENCY OF RESTRICTIONS AMONG ACTIVE AIRMEN BY CLASS AND SEX*
As of: December 31, 1994

Restriction	First Class		Second Class		Third Class		Total Airmen	
	Male	Female	Male	Female	Male	Female	Male	Female
Not Valid for Pilot in Command	1	-	6	-	5	-	12	-
Not Valid for Control Tower Operator Duties	1	-	1	-	13	-	15	-
Not Valid for Air Transport Duties	3	-	-	-	2	-	5	-
Not Valid for Night Flying or By Color Signal Control (Color Vision)	166	-	827	1	5,602	27	6,595	28
Not Valid for Night Flying (Glaucoma)	-	-	-	-	11	1	11	1
Not Valid for Flying Where Radio Use is Required	-	-	6	-	63	7	69	7
Valid for Flight Service Station or Center Duties Only	-	-	-	-	1	-	1	-
Valid for Flight Test Only	6	-	2	-	7	-	15	-
Second Class Privileges Limited to Crop Dusting	-	-	16	-	-	-	16	-
Second Class Privileges Limited to Flight Engineer Duties	-	-	40	-	2	-	42	-

(Continued)

Table V.B (Continued)

FREQUENCY OF RESTRICTIONS AMONG ACTIVE AIRMEN BY CLASS AND SEX*

As of: December 31, 1994

Restriction	First Class		Second Class		Third Class		Total Airmen	
	Male	Female	Male	Female	Male	Female	Male	Female
Second Class Privileges Limited to Control Tower Operator Duties	1	-	2	2	-	-	3	2
Valid for and Limited to ATC Duties Only	-	-	57	6	13	3	70	9
Valid for ATC Duties - Center Only	1	-	7	1	4	1	12	2
Valid for Flight Service Station Duties Only	-	-	3	1	2	-	5	1
Limited to Military Controller Duties	-	-	4	1	5	1	9	2
Valid for Control Tower Duties When Second Controller on Duty	-	-	-	-	1	-	1	-
Valid Only When Accompanied by Another Qualified Pilot	-	-	2	-	3	-	5	-
Valid for Student Pilot Purposes Only	23	-	95	1	1,009	73	1,127	74
Second Class Privileges Limited to Cargo Operations	-	-	1	-	1	-	2	-
Time Limitation Restrictions	667	8	1,093	26	5,119	128	6,879	162

(Continued)

Table V.B (Continued)

FREQUENCY OF RESTRICTIONS AMONG ACTIVE AIRMEN BY CLASS AND SEX*
As of: December 31, 1994

Restriction	First Class		Second Class		Third Class		Total Airmen	
	Male	Female	Male	Female	Male	Female	Male	Female
Special Issuance Restrictions	-	-	3	-	4	2	7	2
Miscellaneous Restrictions	370	9	434	9	732	29	1,536	47
TOTAL	57,080	2,011	90,450	3,907	173,141	12,752	320,671	18,670

* Figures are based on active airmen certified within the past 25 months; however, the restriction may have been assigned prior to the most recent examination. Airmen may have more than one restriction.

Source: Civil Aeromedical Institute, Aeromedical Certification Division, Medical Systems Branch; RIS: AC 8500-1, Aeromedical Certification Statistical Handbook Computer Run.

Table V.C

ACTIVE AIRMEN WITH DEFECTIVE COLOR VISION BY CLASS AND SEX*
As of: December 31, 1994

Class Issued	Frequency**			
	Male	Percent	Female	Percent
First	2,082	(1.5)	-	(0.0)
Second	4,315	(2.8)	10	(0.1)
Third	10,630	(3.7)	46	(0.2)
TOTAL	17,027	(2.9)	56	(0.2)

* Figures are based on active airmen certified within the past 25 months and the assignment of the restriction "Not Valid for Night Flying or by Color Signal Control" or issuance of a waiver for deficient color vision.

** Basis for percentages is the number of active airmen by sex within each class. Percent of total is computed using the total male or female population.

Source: Civil Aeromedical Institute, Aeromedical Certification Division, Medical Systems Branch;
 RIS: AC 8500-1, Aeromedical Certification Statistical Handbook Computer Run.

Table V.D

ACTIVE AIRMEN WITH WAIVERS BY CLASS AND SEX*
As of: December 31, 1994

Class Issued	Frequency**			
	Male	Percent	Female	Percent
First	10,355	(7.5)	490	(8.4)
Second	26,133	(16.9)	1,209	(16.7)
Third	17,285	(6.0)	485	(2.1)
TOTAL	53,773	(9.3)	2,184	(6.1)

* Figures are based on active airmen certified within the past 25 months; however, the waiver may have been issued prior to the most recent examination. Tabulations were based on an indication of a waiver in the class issued code or the presence of a waiver number.

** Basis for percentages is the number of active airmen by sex within each class. Percent of total is computed using the total male or female population.

Source: Civil Aeromedical Institute, Aeromedical Certification Division, Medical Systems Branch;
 RIS: AC 8500-1, Aeromedical Certification Statistical Handbook Computer Run.