



# FAA UAS SYMPOSIUM

## Class E Airspace

Kevin Morris

FAA, Aviation Safety Inspector



Federal Aviation  
Administration



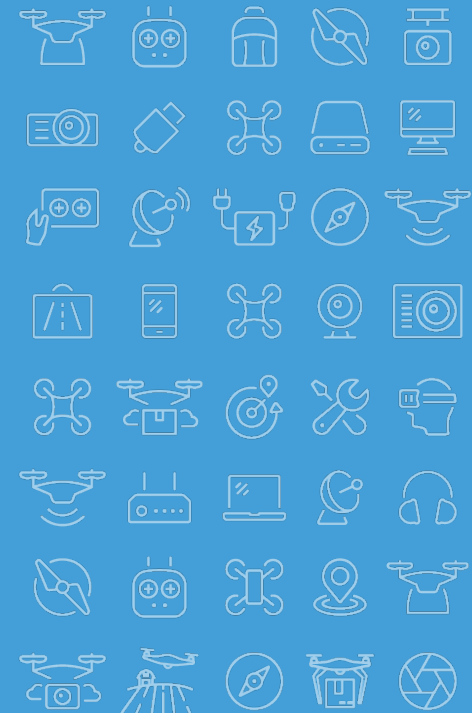
Types E2, E3, and E4

Aeronautical Chart Depictions

Authorization Requirements



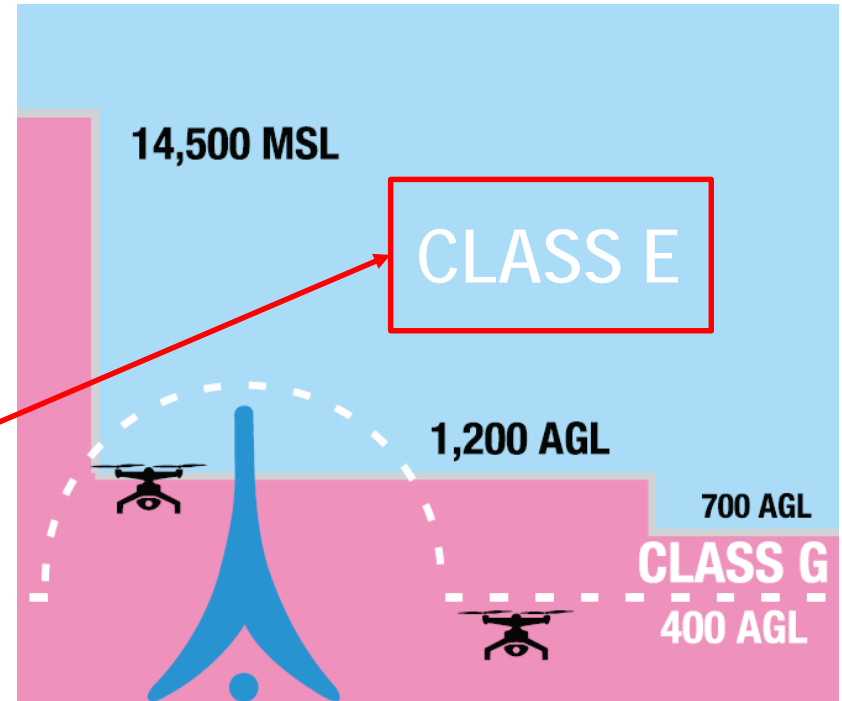
# Class E Airspace



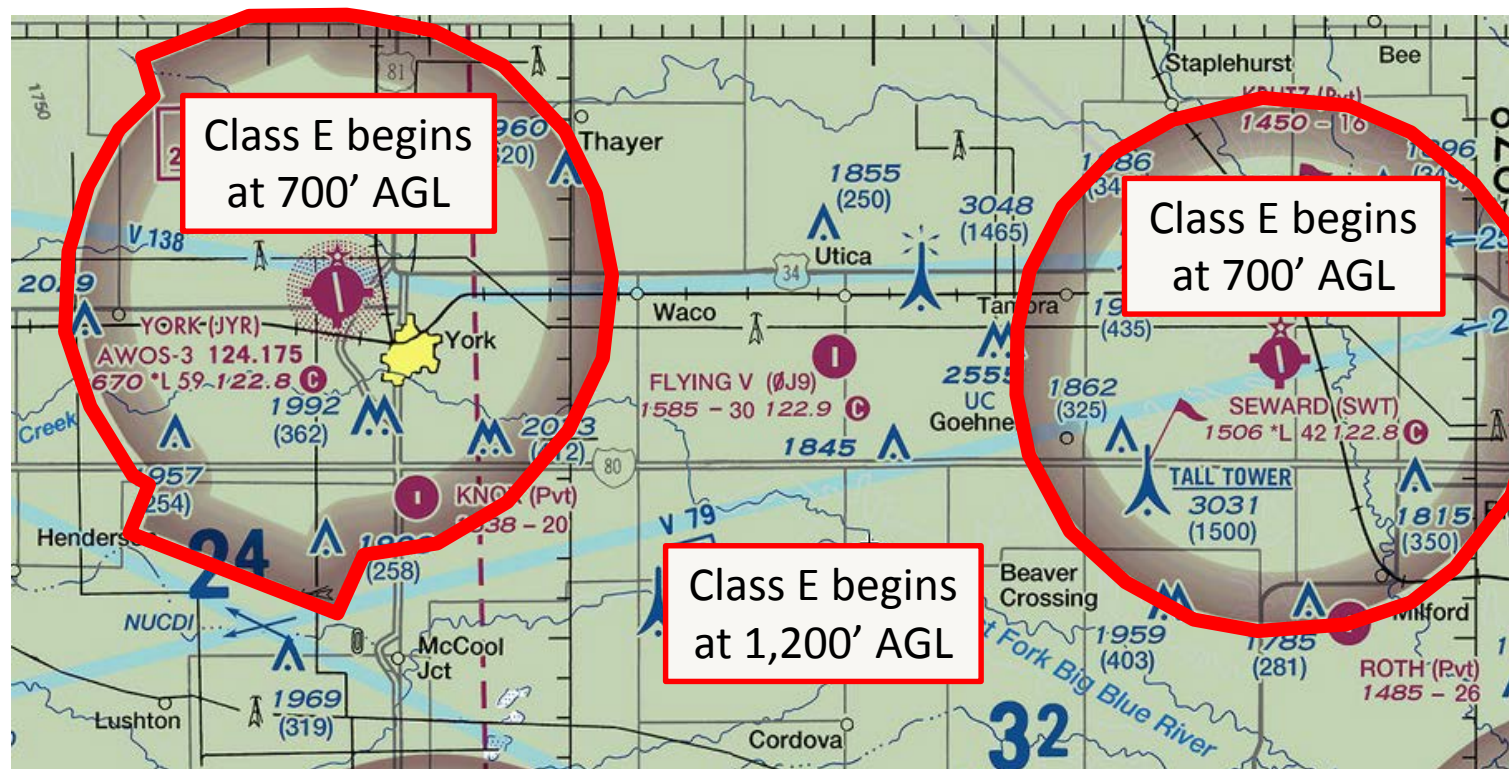
# Class E Airspace

- Generally begins where Class Golf ends
  - Typically 700ft or 1,200ft Above Ground Level
  - Unless associated with an airport surface area

- **ATC authorization not required for Part 107 operations**



# Class E Airspace



# Class E Airspace

## Tower Inspections:

- §107.51(b)
  - Limits maximum altitude to 400ft Above Ground Level
- Exceptions:
  - Is flown within a 400-foot radius of a structure; and
  - Does not fly higher than 400 feet above the structure's immediate uppermost limit



#UAS2019



**No person may operate a small unmanned aircraft...within the lateral boundaries of the surface area of Class E airspace designated for an airport unless that person has prior authorization from Air Traffic Control (ATC)**

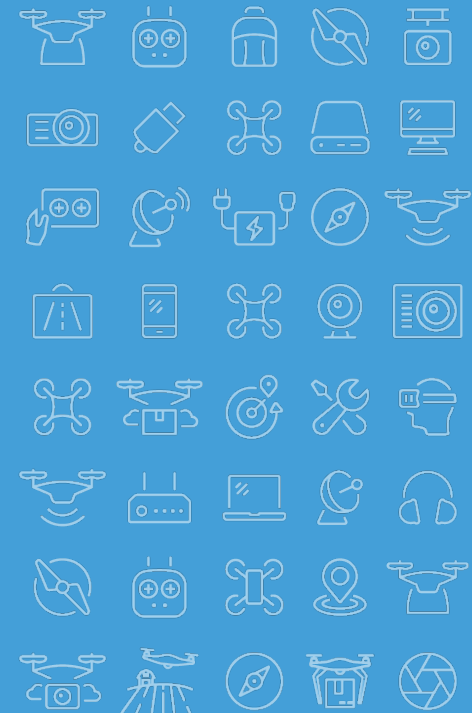
*(Small UAS Operating Rules) 14 CFR §107.41*



**FAA UAS  
SYMPOSIUM**

#UAS2019

# Surface Class E Airspace

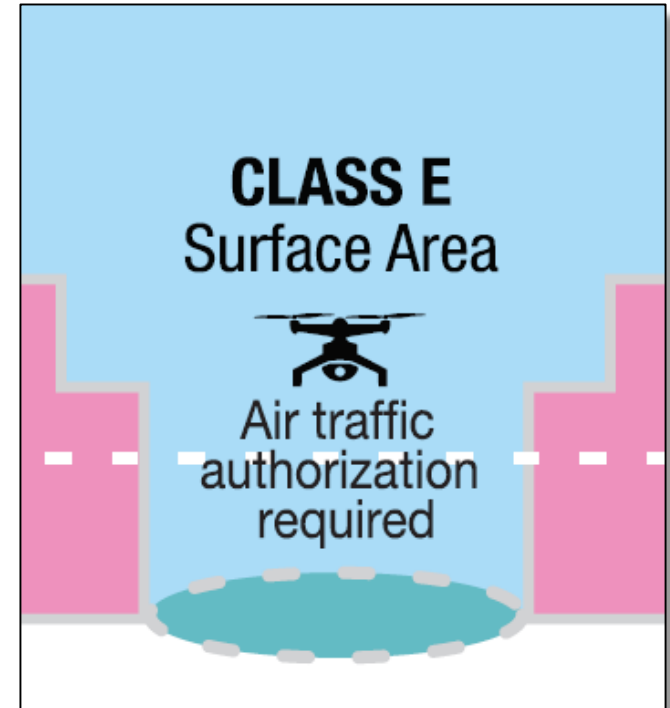




# Surface Class E Airspace

Starts at ground level:

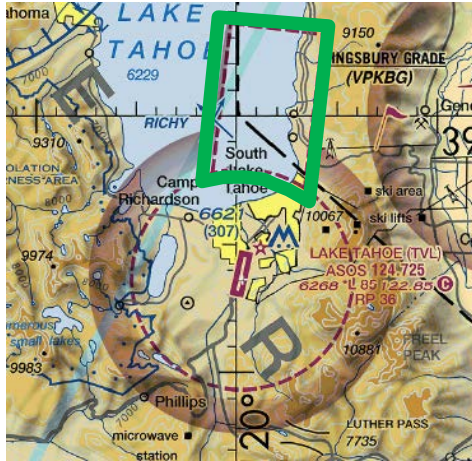
- Type E4
  - Extension to Class D or E surface area
- Type E3
  - Extension to a Class C surface area
- **Type E2**
  - Surface area designated for an airport
  - **AUTHORIZATION NEEDED**



# Surface Class E Airspace



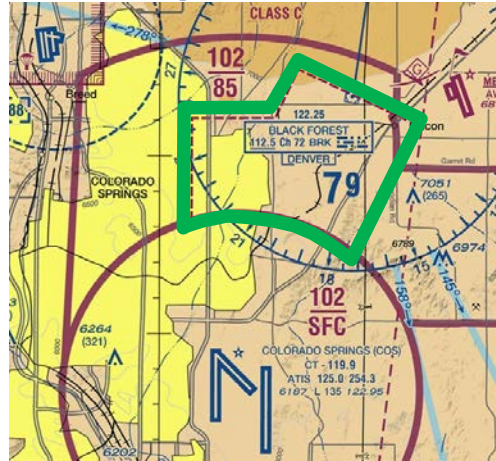
# Surface Class E Airspace



**SURFACE ECHO - E4**

No ATC

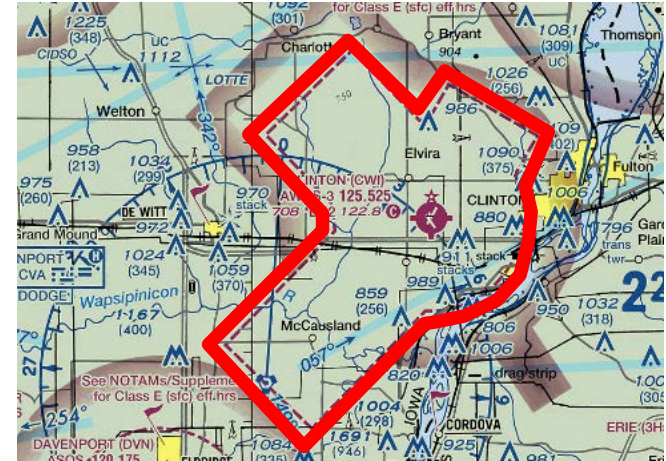
Authorization



**SURFACE ECHO - E3**

No ATC

Authorization

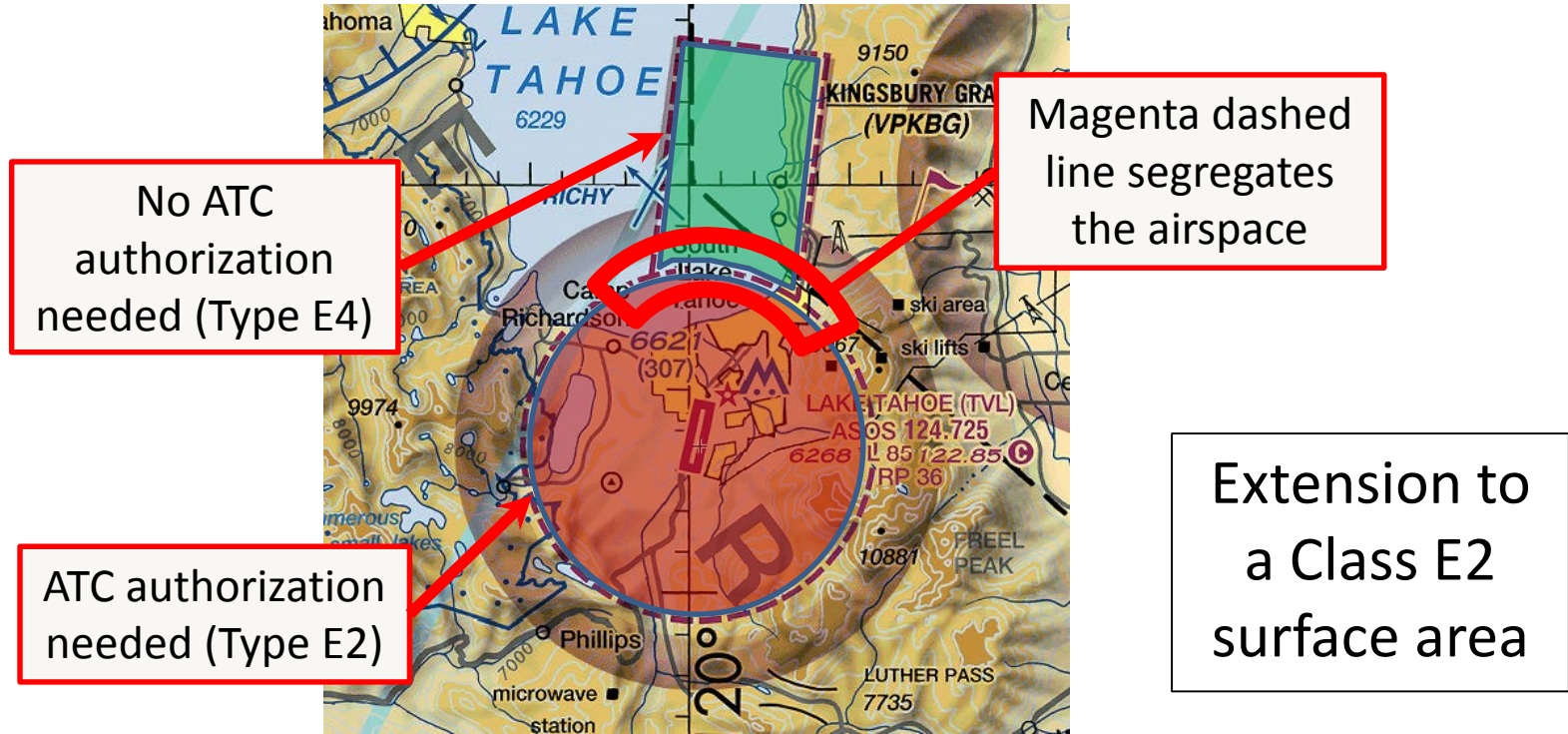


**SURFACE ECHO - E2**

ATC Authorization Needed

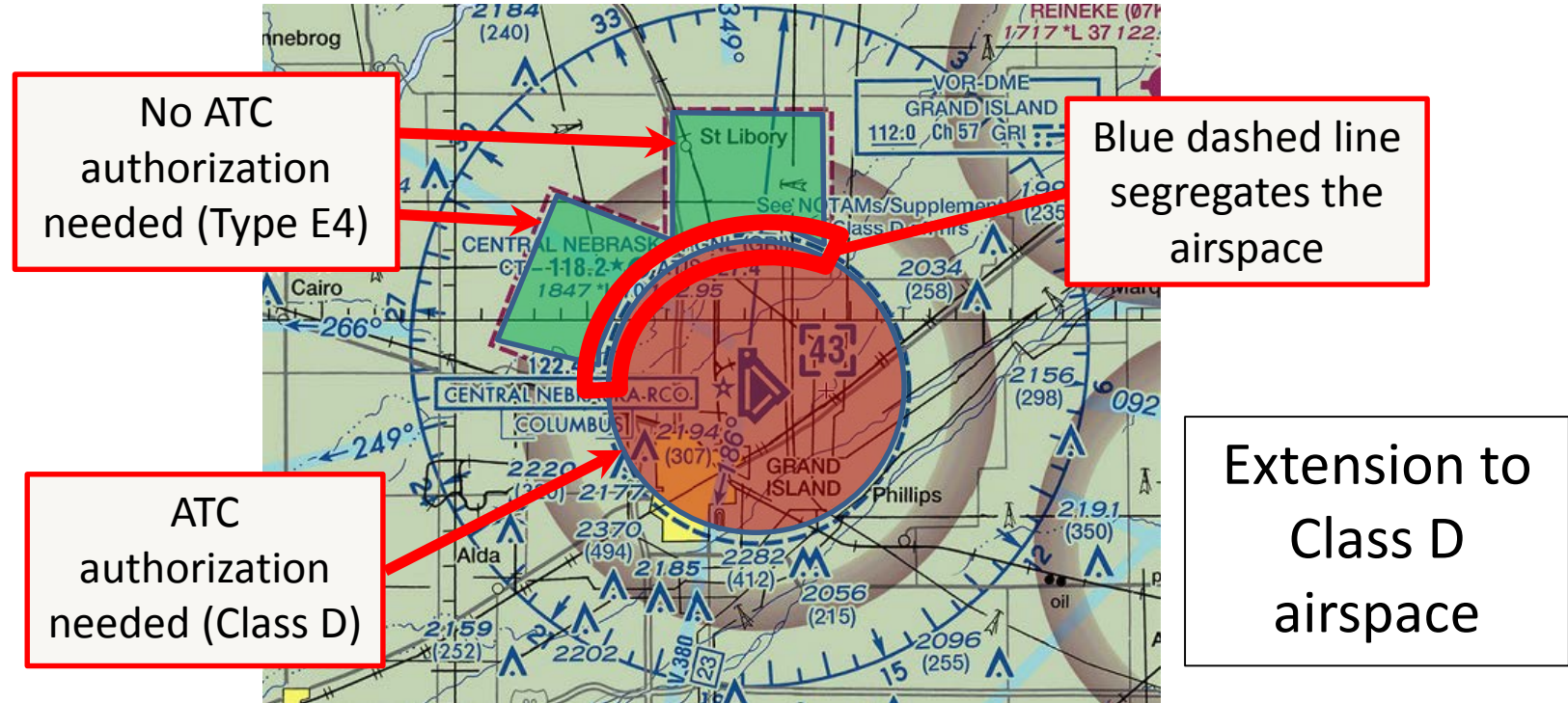
*Three different types of surface Class E airspace extensions*

# Surface Class E – Type E4

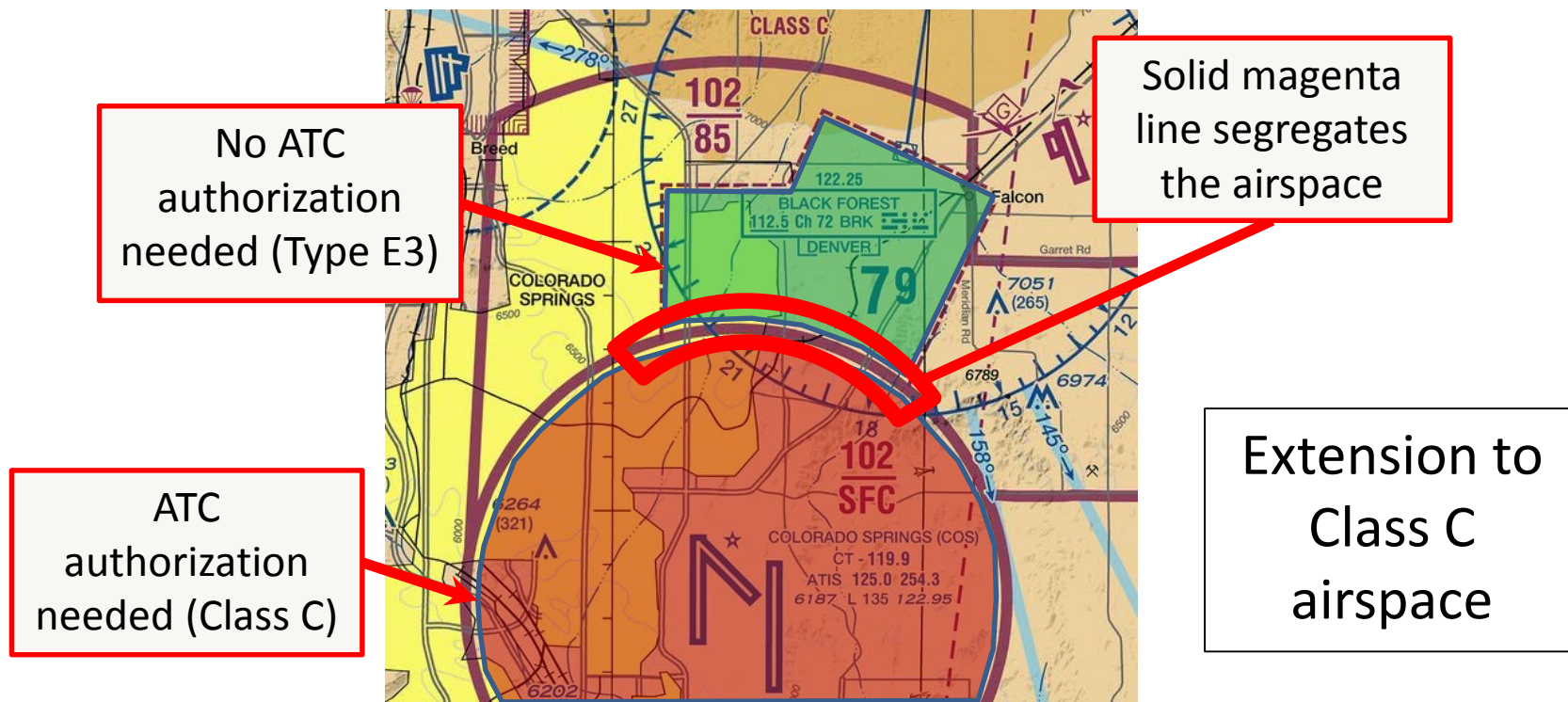




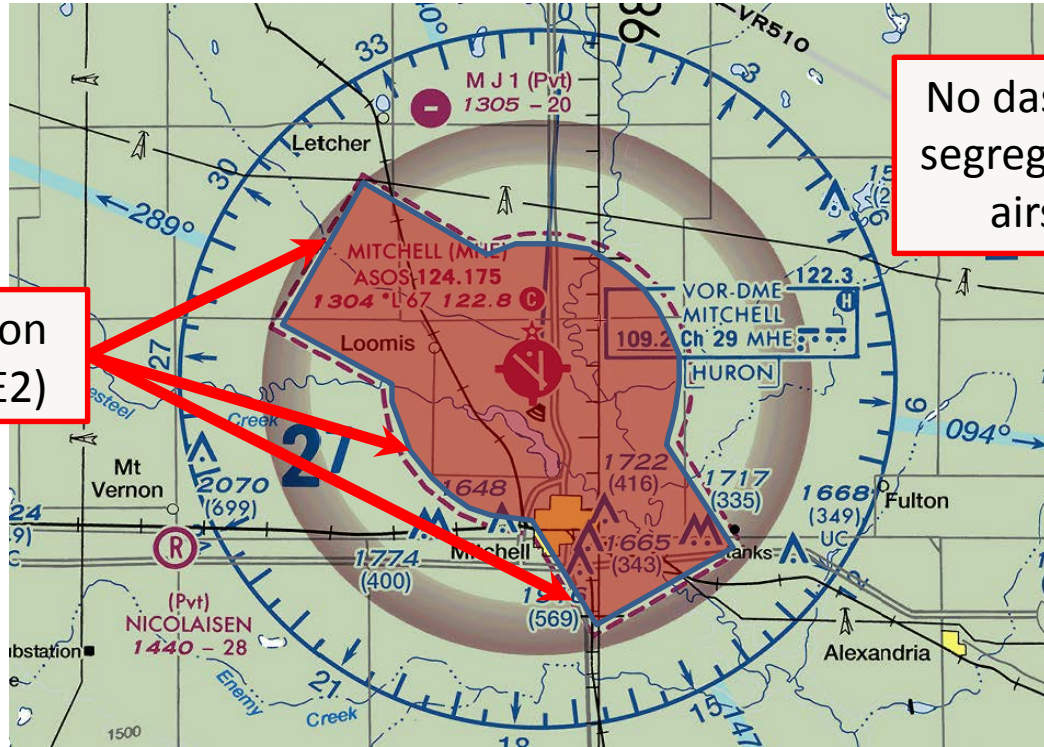
# Surface Class E – Type E4



# Surface Class E – Type E3



# Surface Class E – Type E2



ATC authorization  
needed (Class E2)

No dashed line  
segregating the  
airspace

Class E2  
surface area

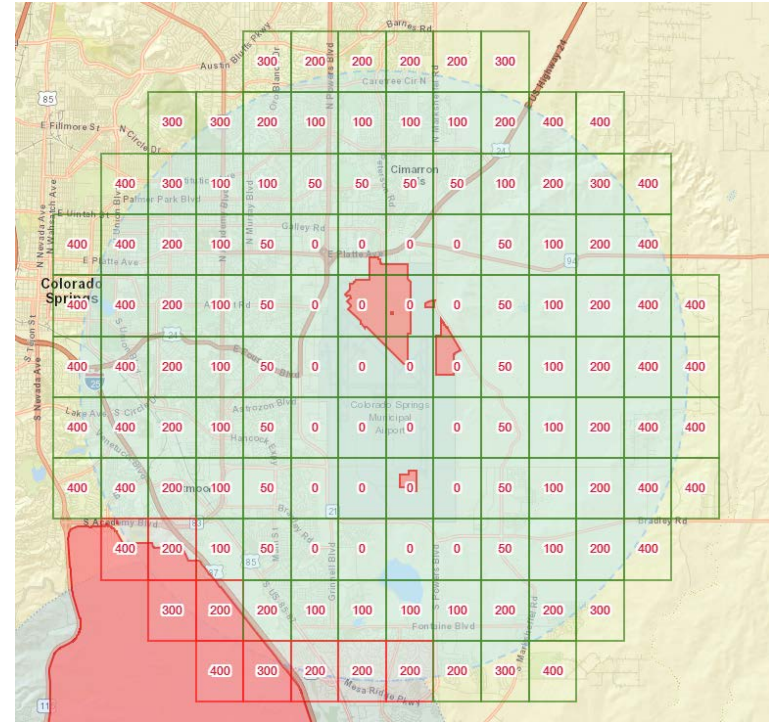


# Surface Class E Airspace



## UAS Facility Map

- Identifies areas where ATC authorization is required
- Controlled airspace:
  - Class B
  - Class C
  - Class D
  - Surface Class Echo – Type E2



#UAS2019

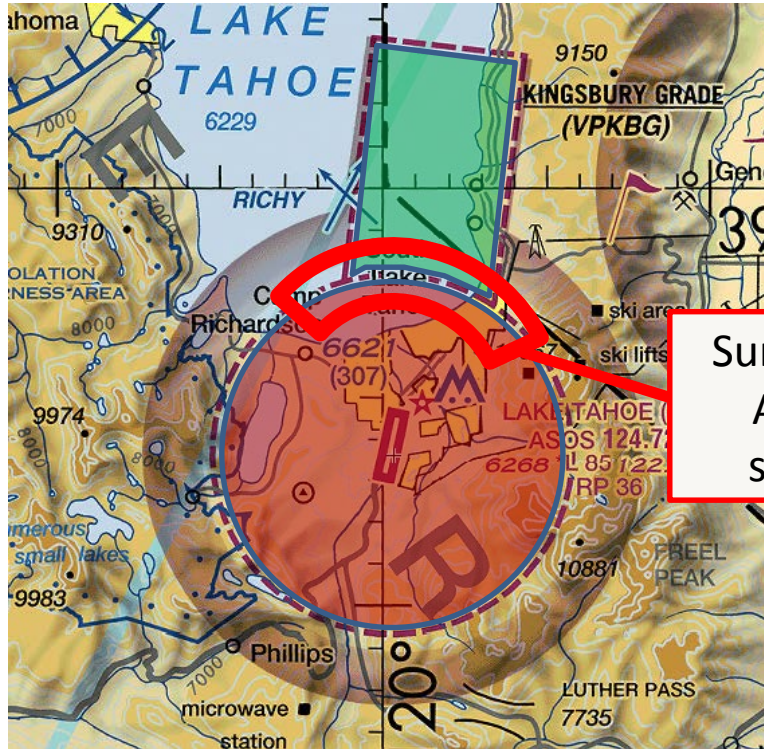


Federal Aviation  
Administration

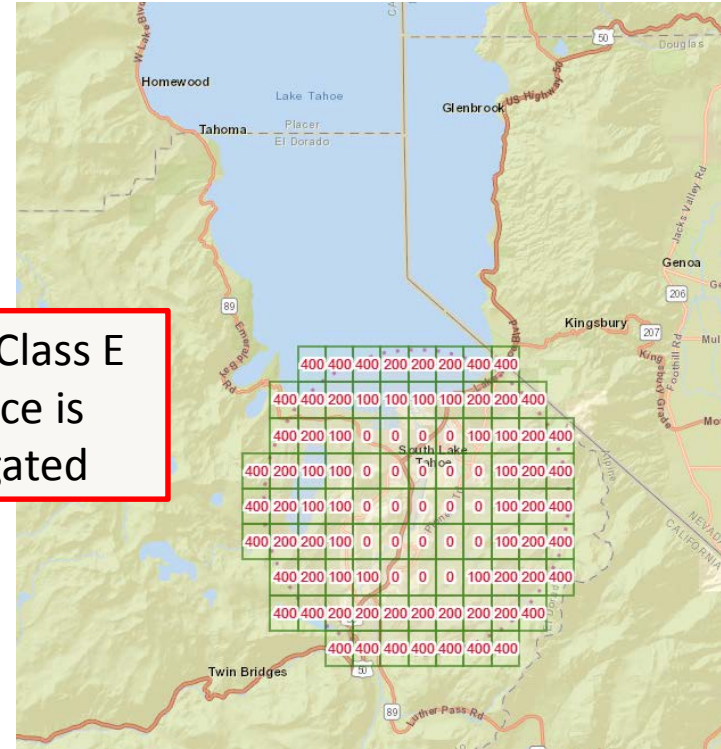




# Lake Tahoe Airport (TVL) Example



Surface Class E  
Airspace is  
segregated



# Questions?

