

ENVIRONMENTAL IMPACT STATEMENT

SPACEX STARSHIP-SUPER HEAVY LAUNCH VEHICLE AT LAUNCH COMPLEX 39A

at the Kennedy Space Center, Merritt Island, Florida

Final, Volume II, Appendix B.3, Part 8

January 2026



**Federal Aviation
Administration**

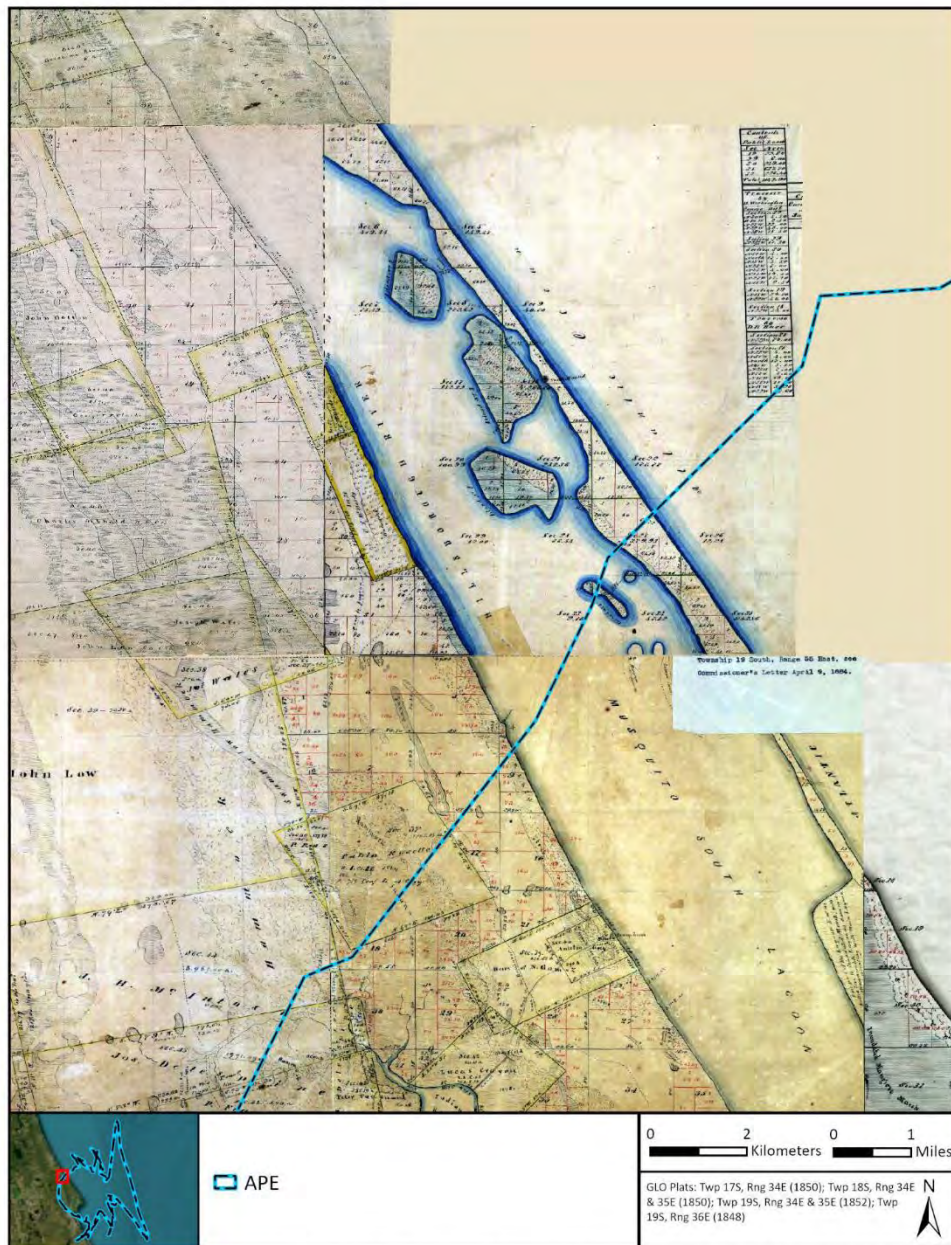
THIS PAGE INTENTIONALLY LEFT BLANK.

TABLE OF CONTENTS

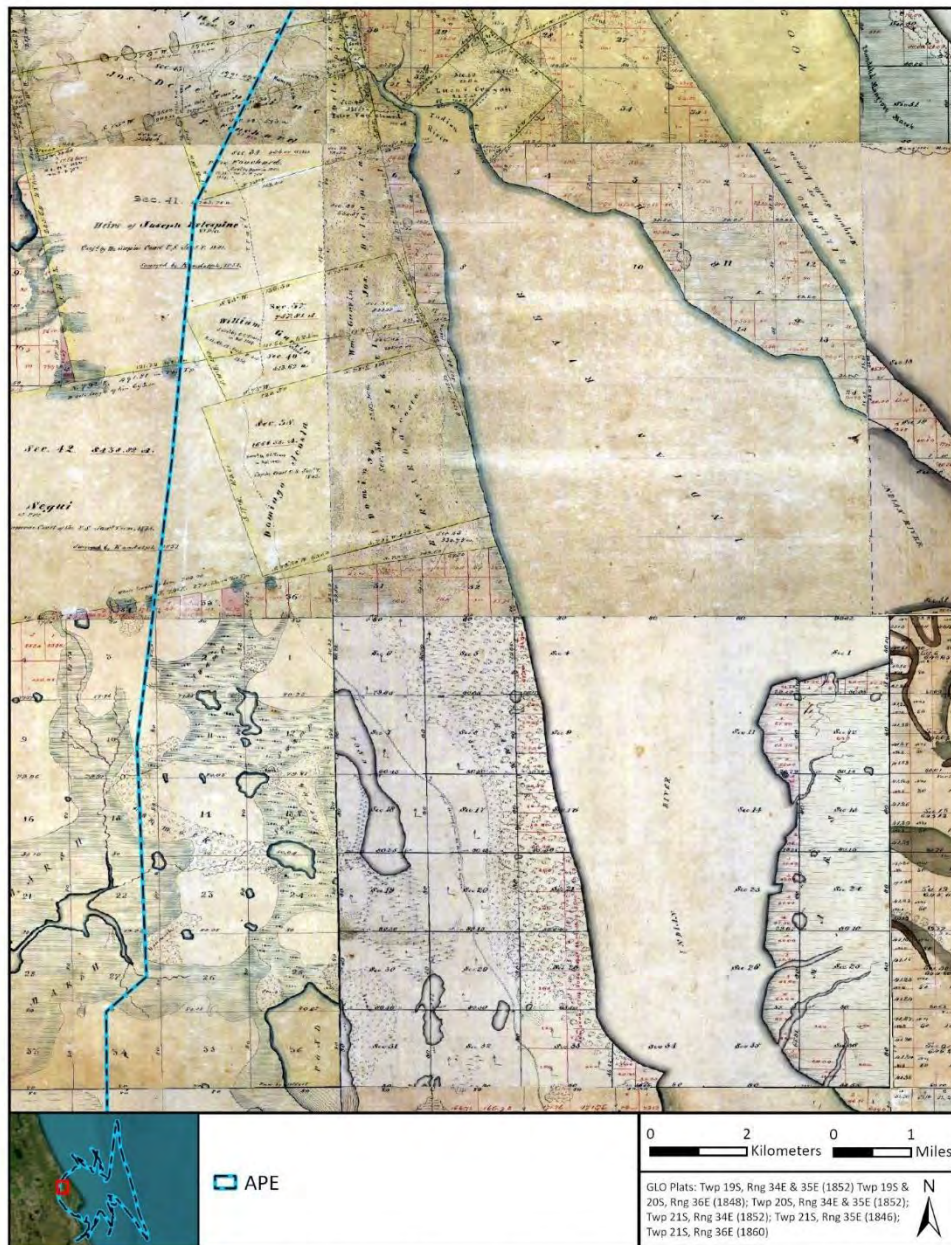
Appendix B	Regulatory Consultations	B-1
B.3	National Historic Preservation Act Section 106 Consultation (Florida SHPO)	B-1
B.3.1	NHPA Section 106 Programmatic Agreement	B-7
B.3.2	NHPA Section 106 Correspondence	B-37
B.3.3	NHPA Section 106 Cultural Resources Assessment.....	B-394

THIS PAGE INTENTIONALLY LEFT BLANK.

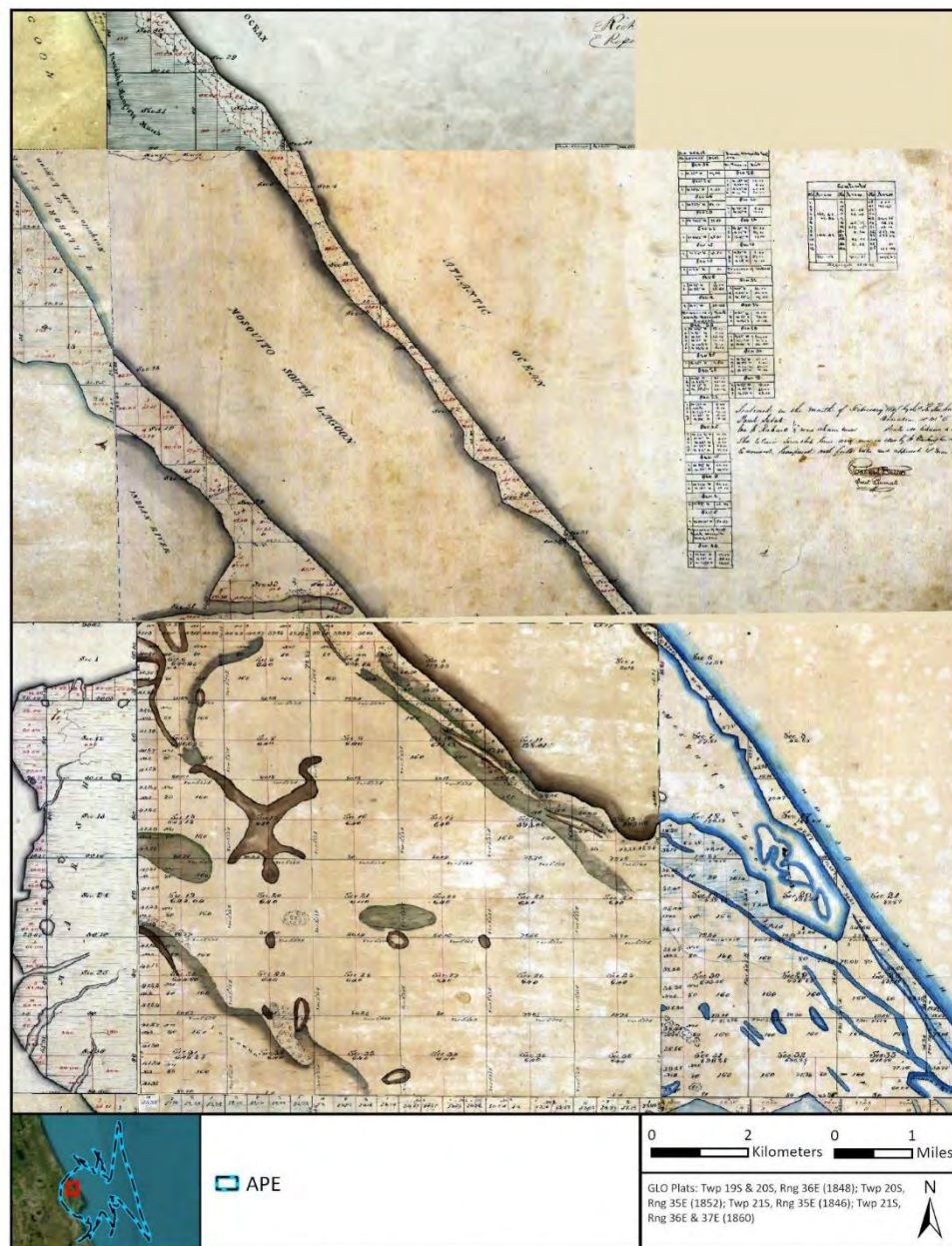
APPENDIX B.
HISTORIC MAPS AND AERIAL PHOTOGRAPHS

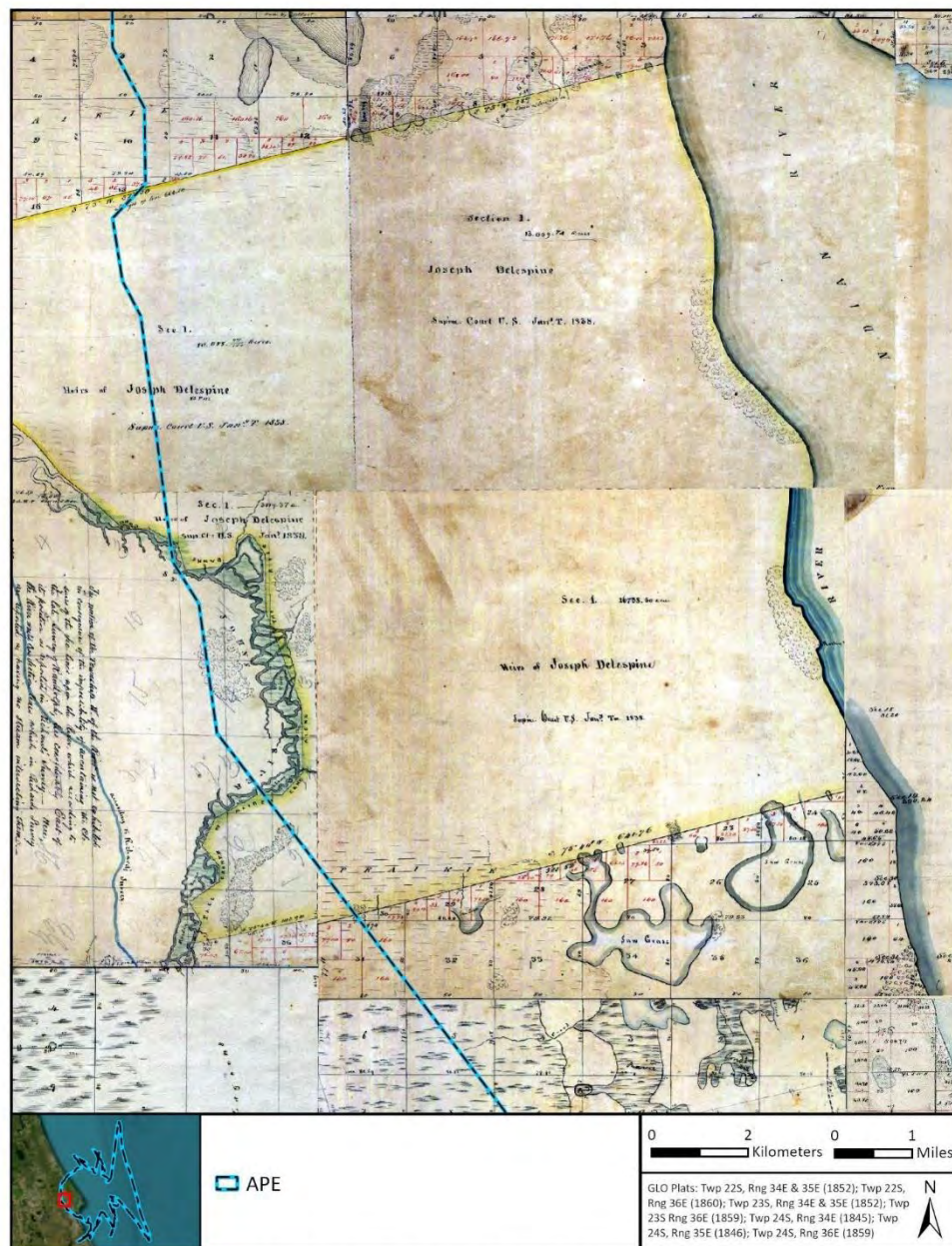


GLO survey maps of Townships 17 through 19 South, Ranges 24 through 36 East (GLO 1848a, 1850a, 1850b, 1850c, 1852a, 1852b).



GLO survey maps of Townships 19 through 21 South, Ranges 34 through 36 East (GLO 1846a, 1848a, 1848b, 1852a, 1852b, 1852c, 1852d, 1852e, 1860a).

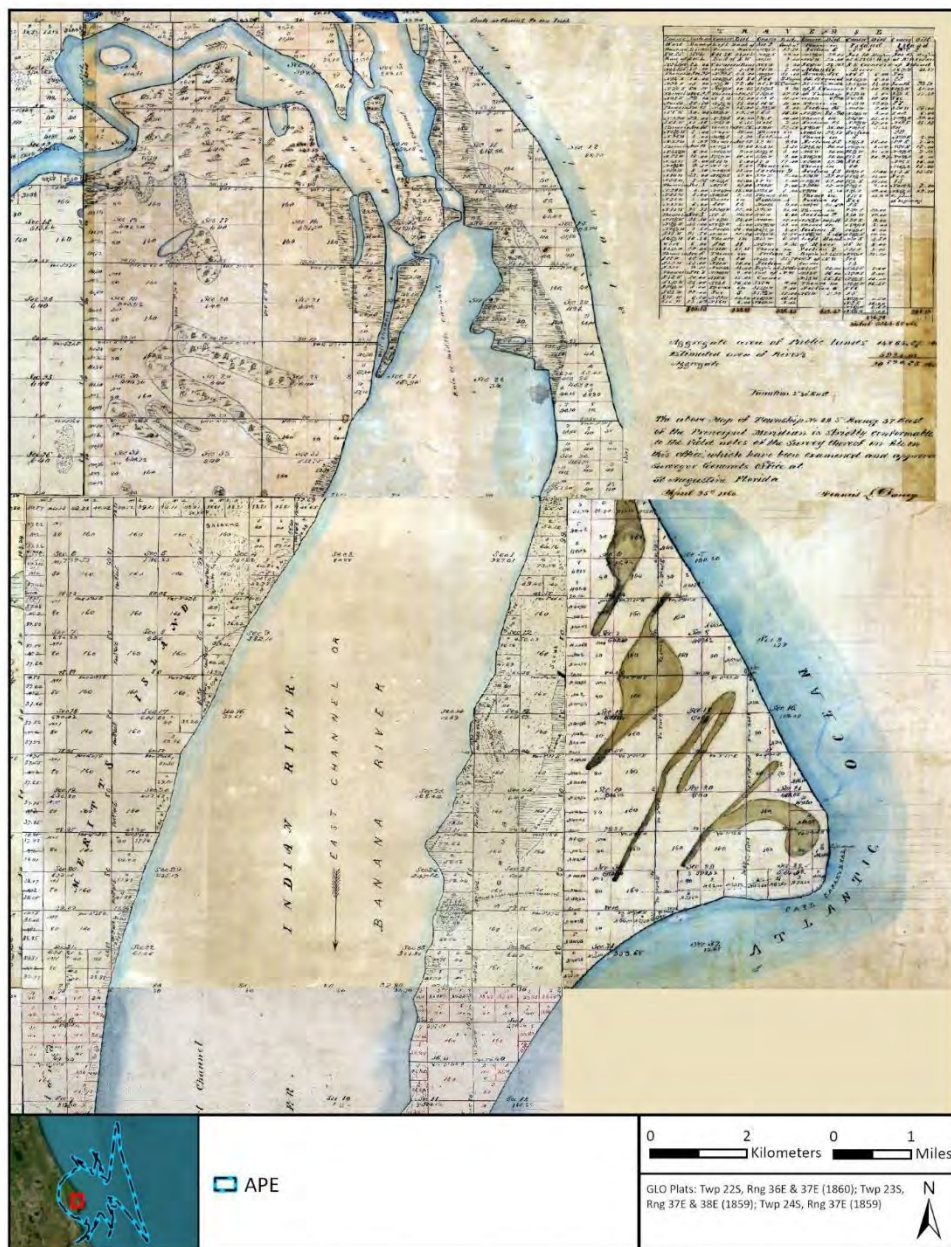




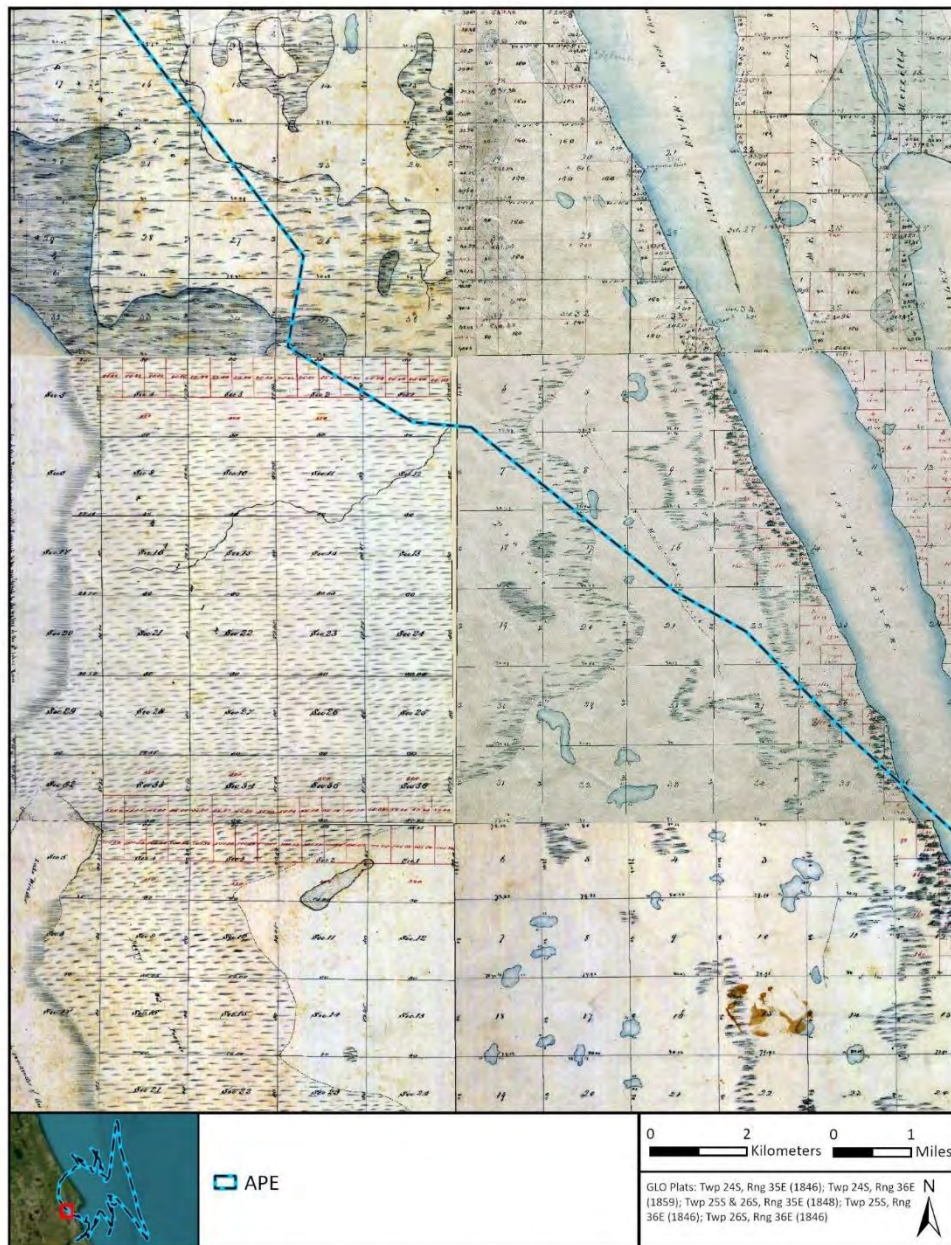
GLO survey maps of Townships 22 through 24 South, Ranges 34 through 36 East (GLO 1845a, 1846a, 1852f, 1852g, 1859a, 1859d, 1860c).



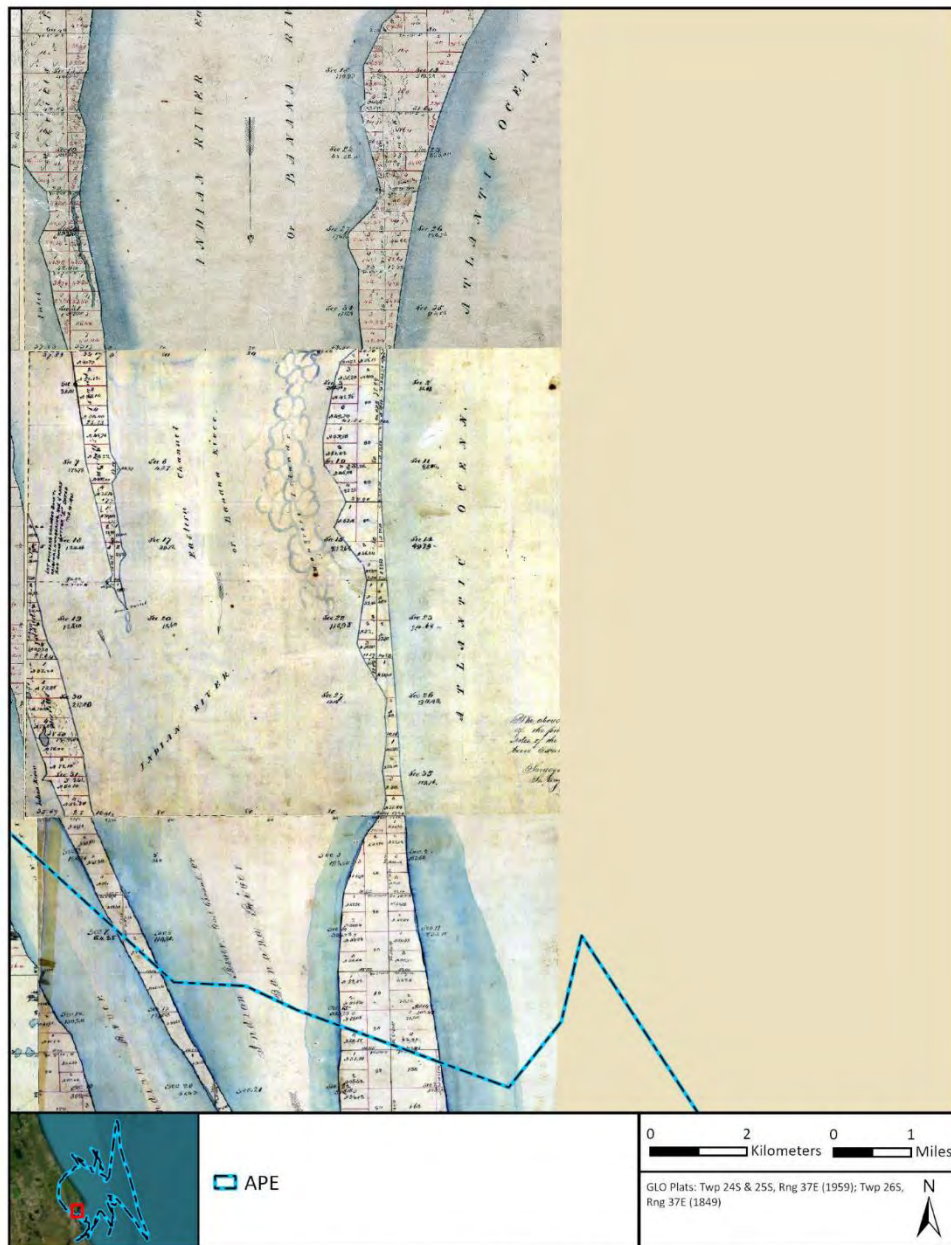
GLO survey maps of Townships 22 through 24 South, Ranges 34 through 37 East (GLO 1846b, 1852f, 1852i, 1859a, 1859b, 1859d, 1859e).



GLO survey maps of Townships 22 through 24 South, Ranges 36 through 38 East (GLO 1859b, 1859c, 1859e, 1860c, 1860d).



GLO survey maps of Townships 24 through 26 South, Ranges 35 and 36 East (GLO 1846b, 1846c, 1846d, 1848c, 1848d, 1859d).



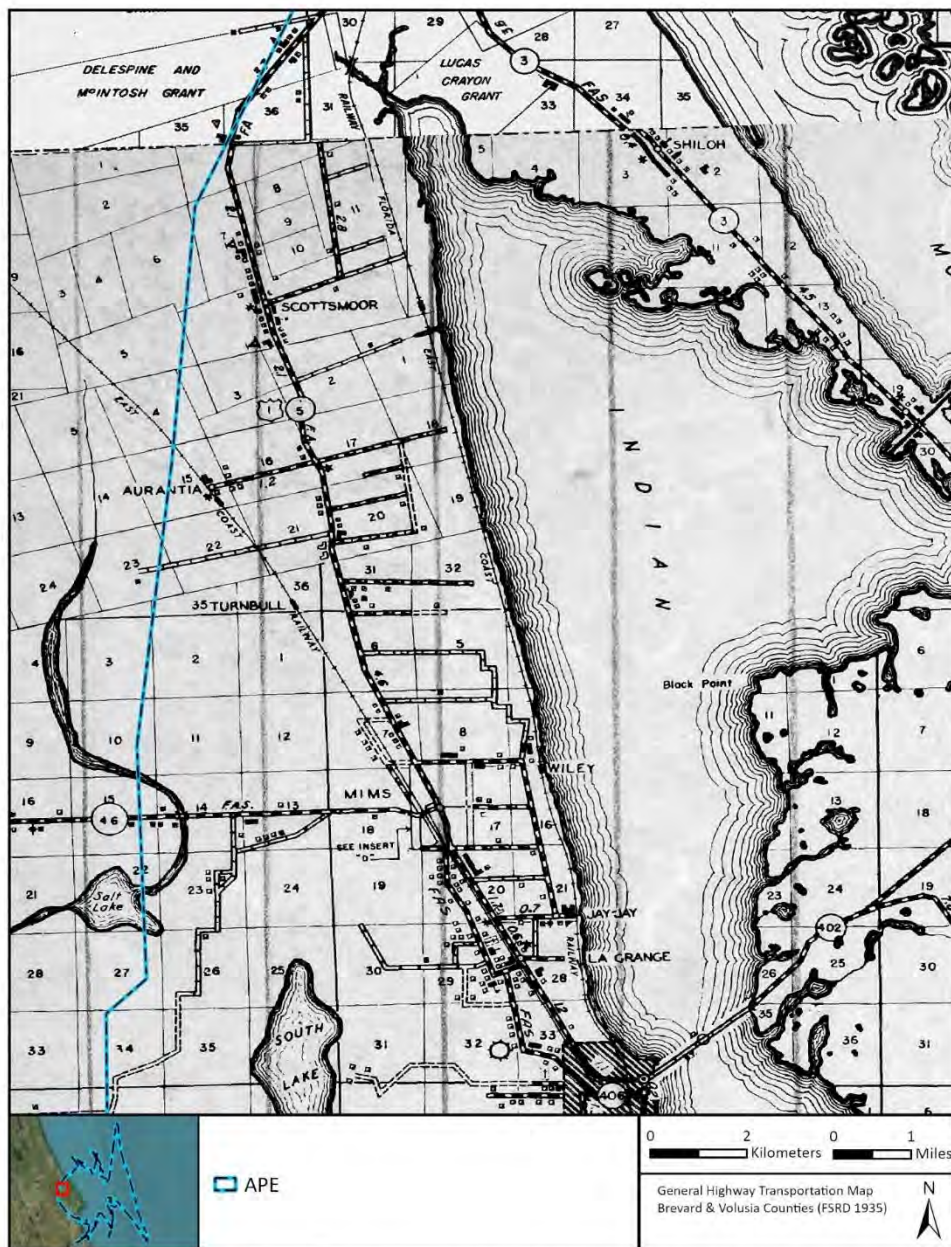
GLO survey maps of Townships 24 through 26, Range 37 East (GLO 1849, 1859e, 1859f).



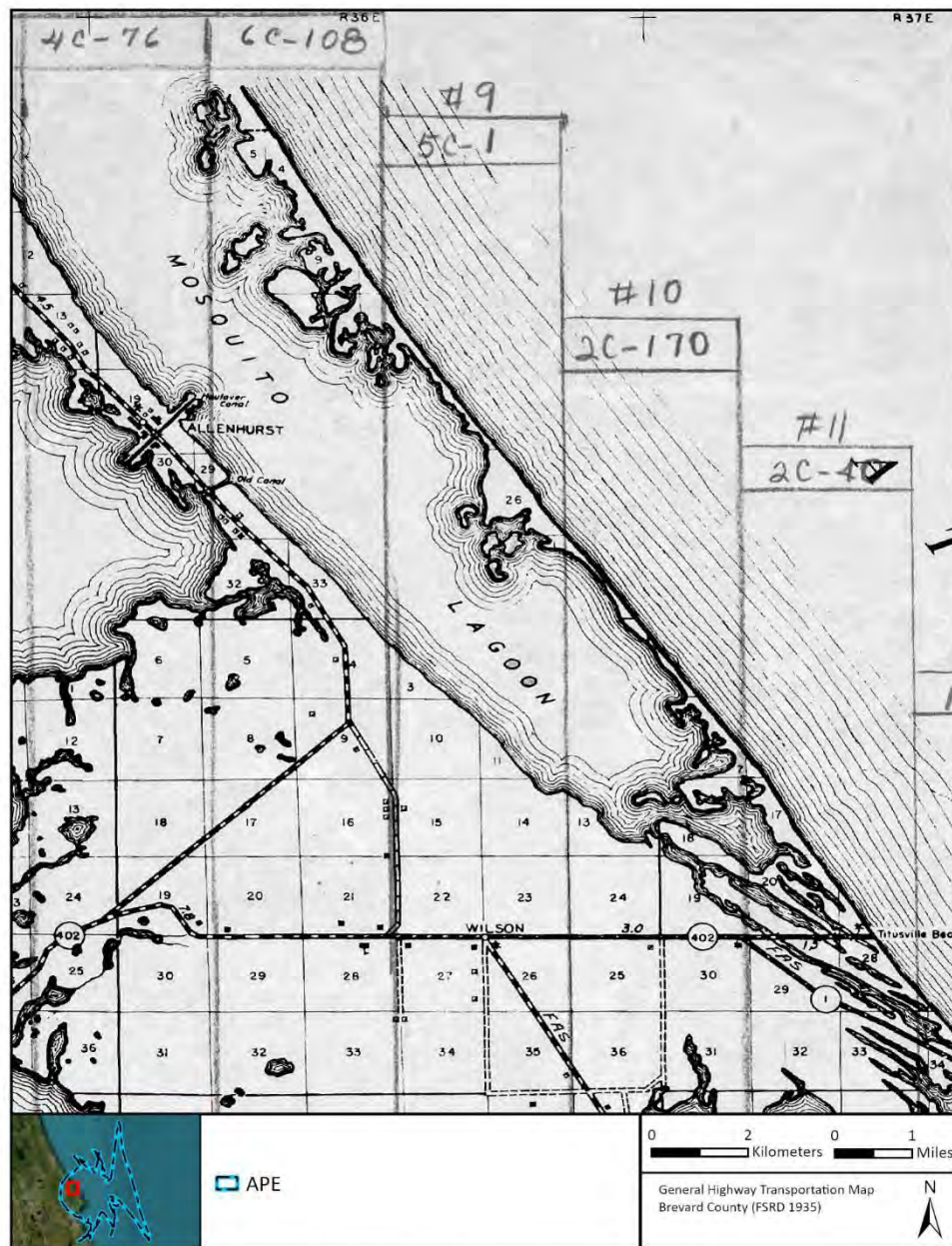
GLO survey maps of Townships 29 through 31 South, Ranges 37 through 39 East (GLO 1845b, 1845c, 1845d, 1845e, 1846e, 1846f, 1859g).



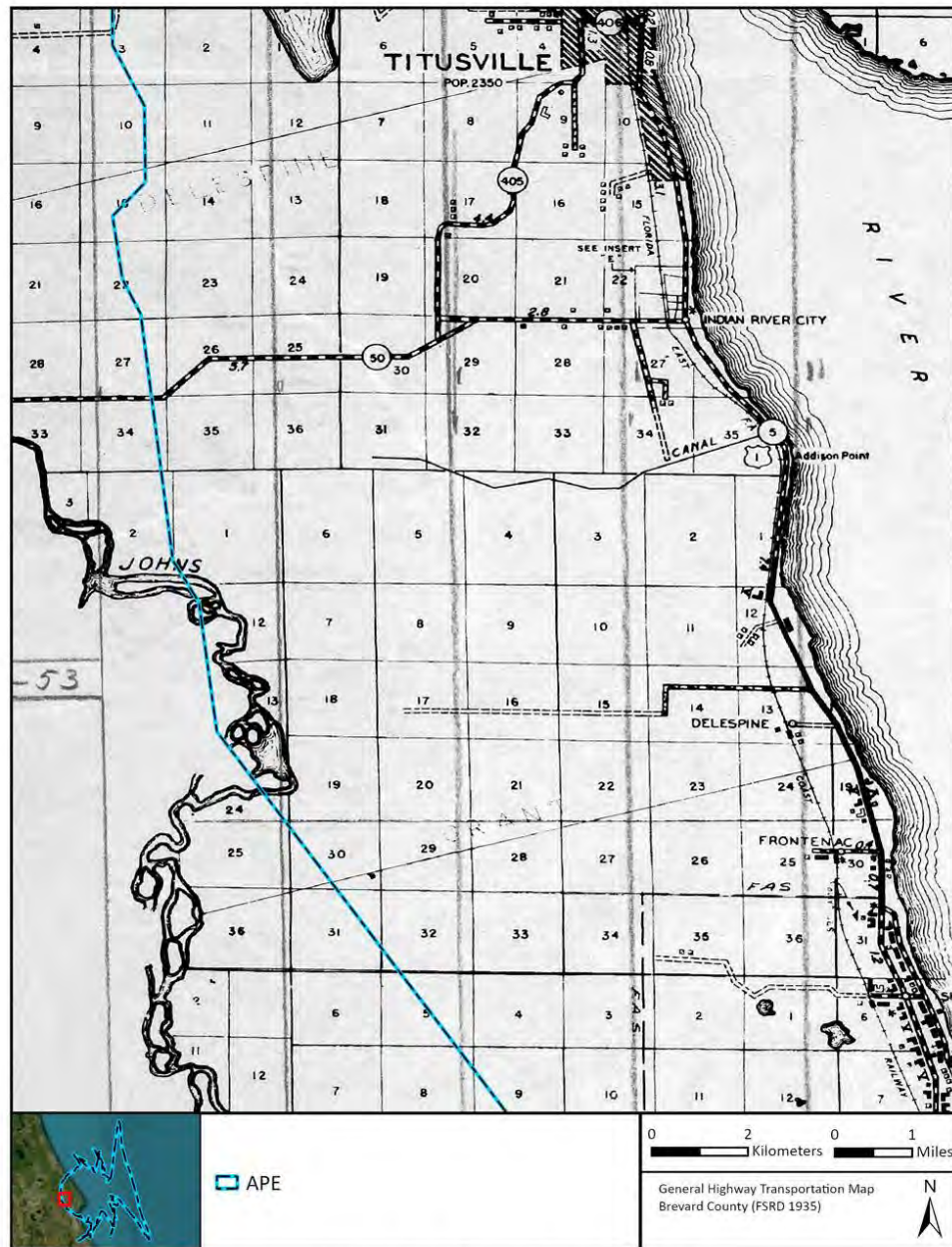
General Highway Maps of Brevard and Volusia Counties (FSRD 1935a, 1935b).



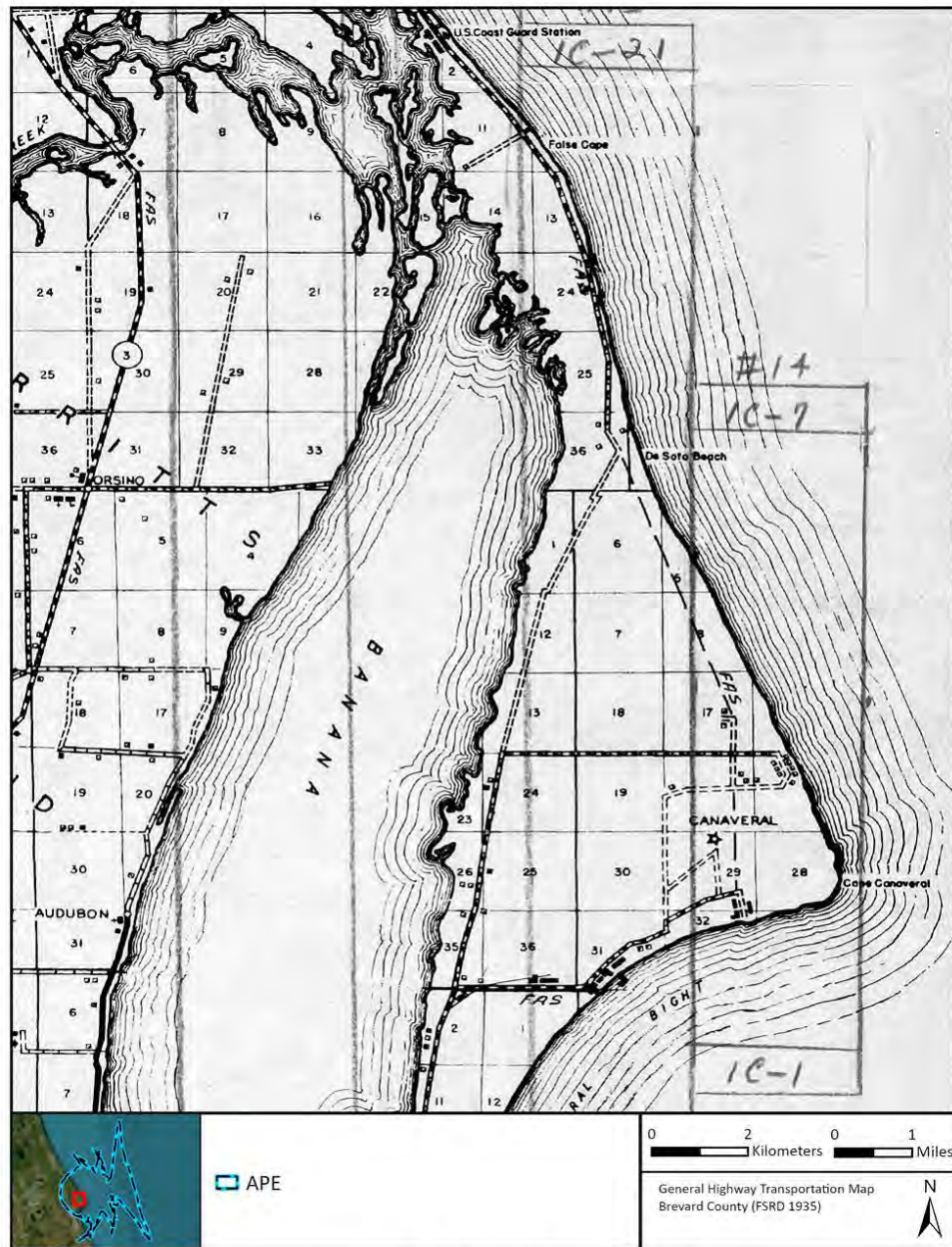
General Highway Map of Brevard and Volusia County (FSRD 1935a, 1935b).



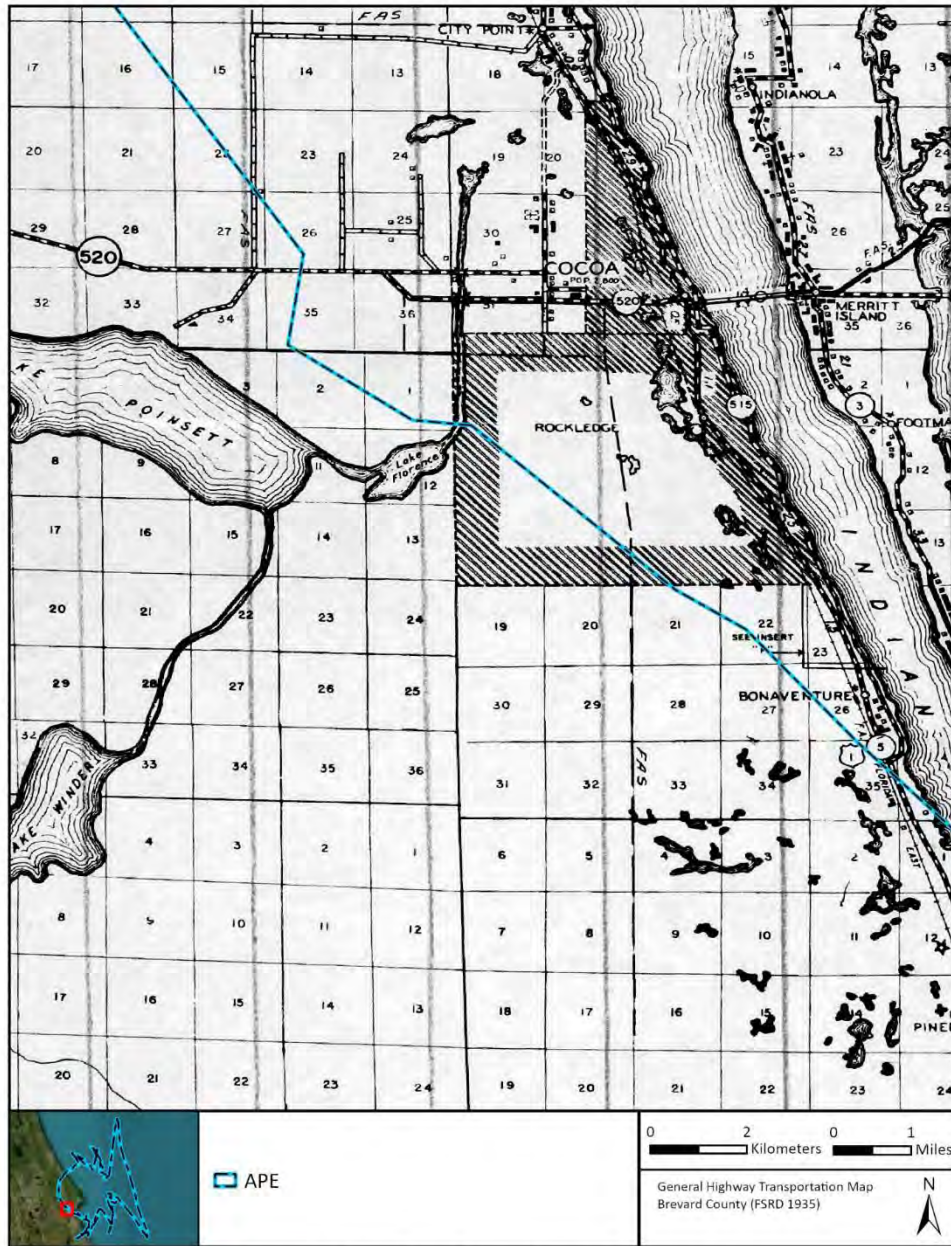
General Highway Map of Brevard County (FSRD 1935a).



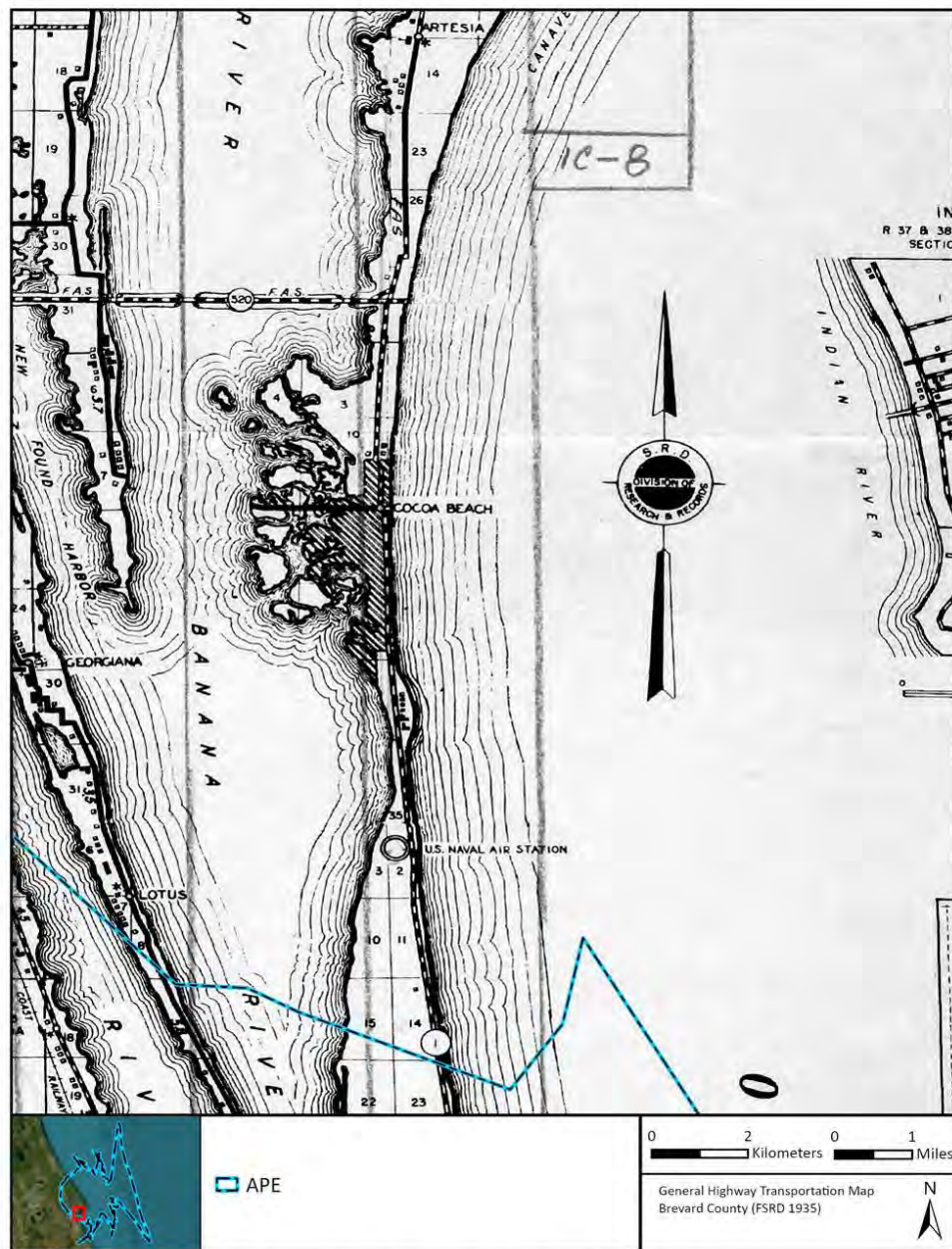


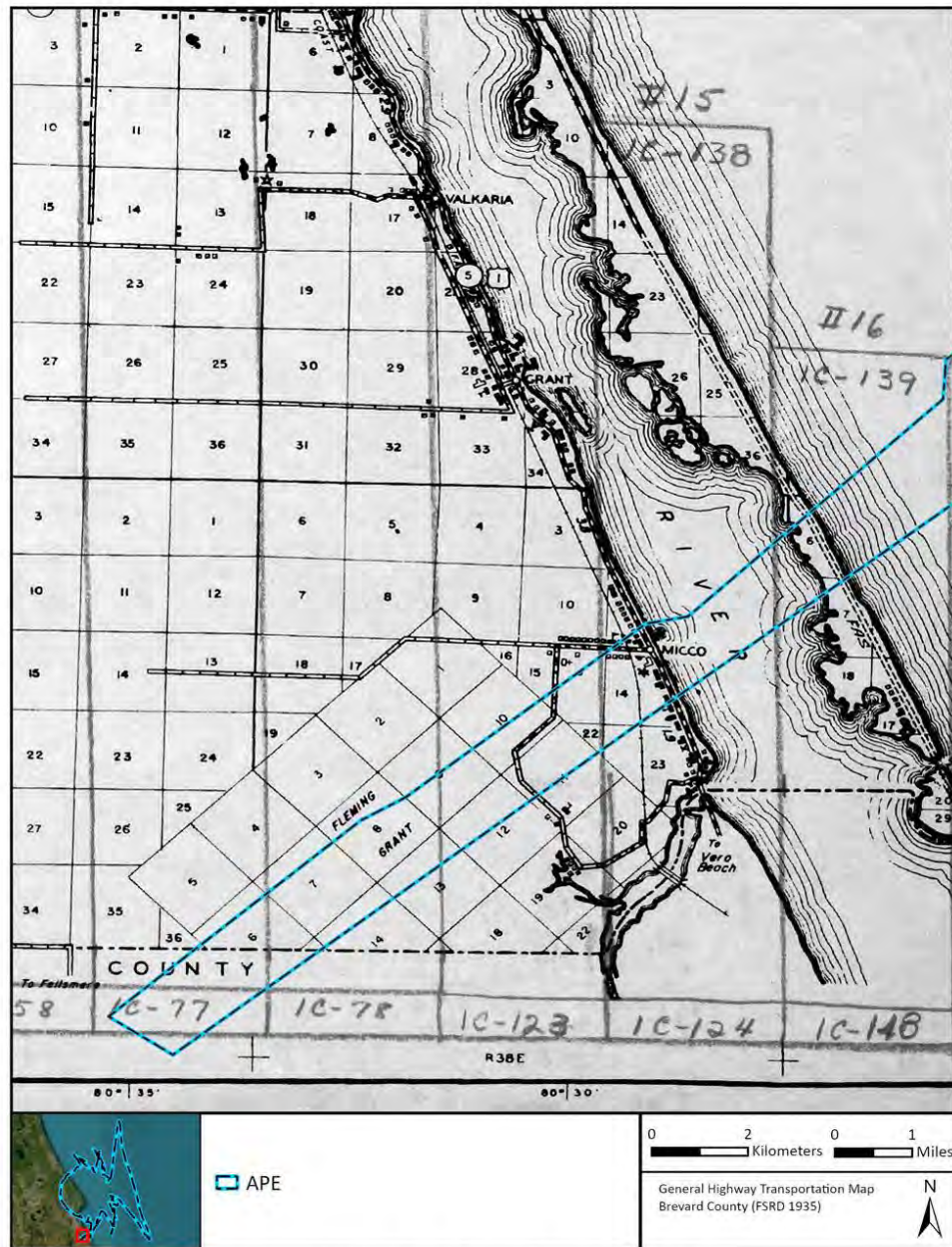


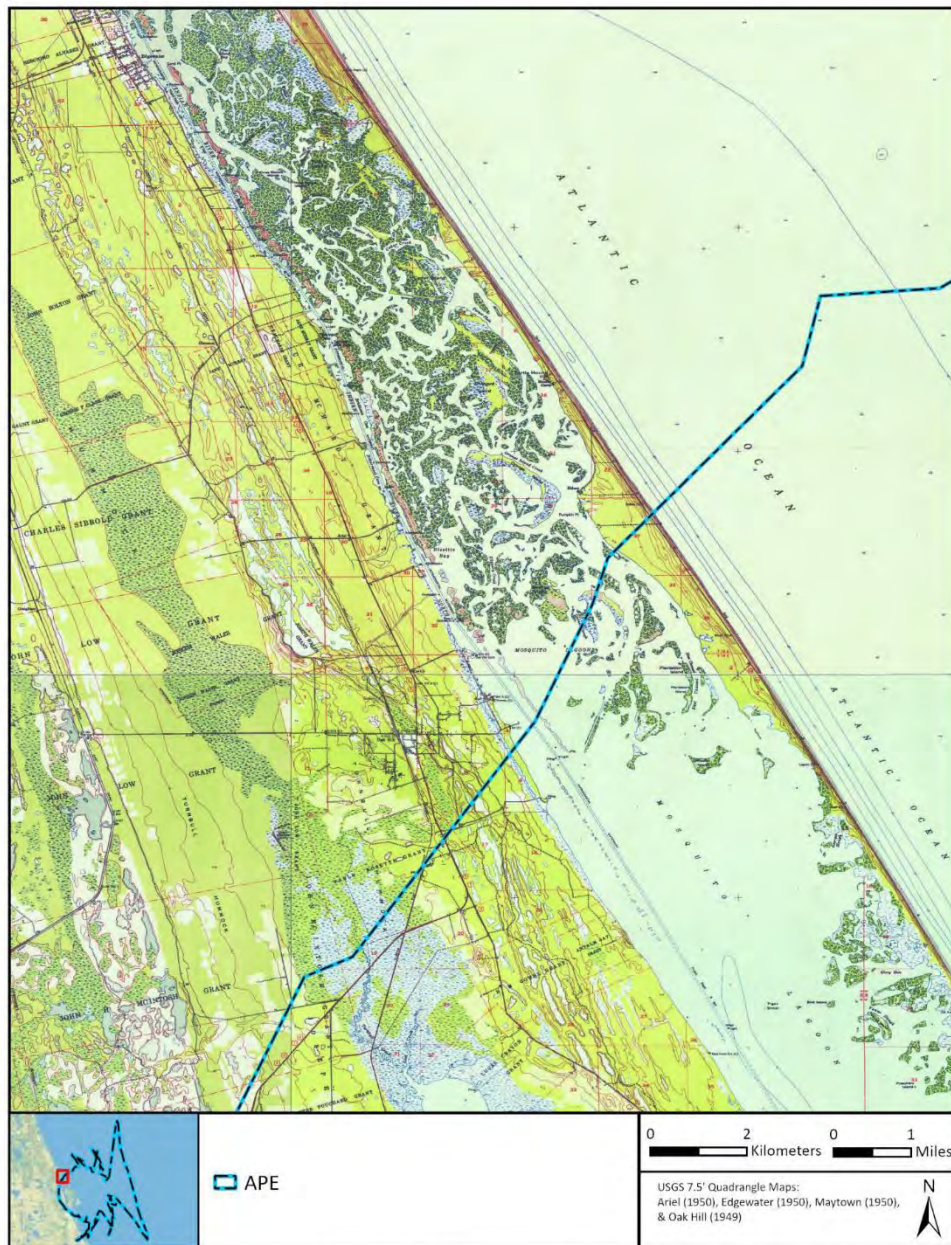
General Highway Map of Brevard County (FSRD 1935a).



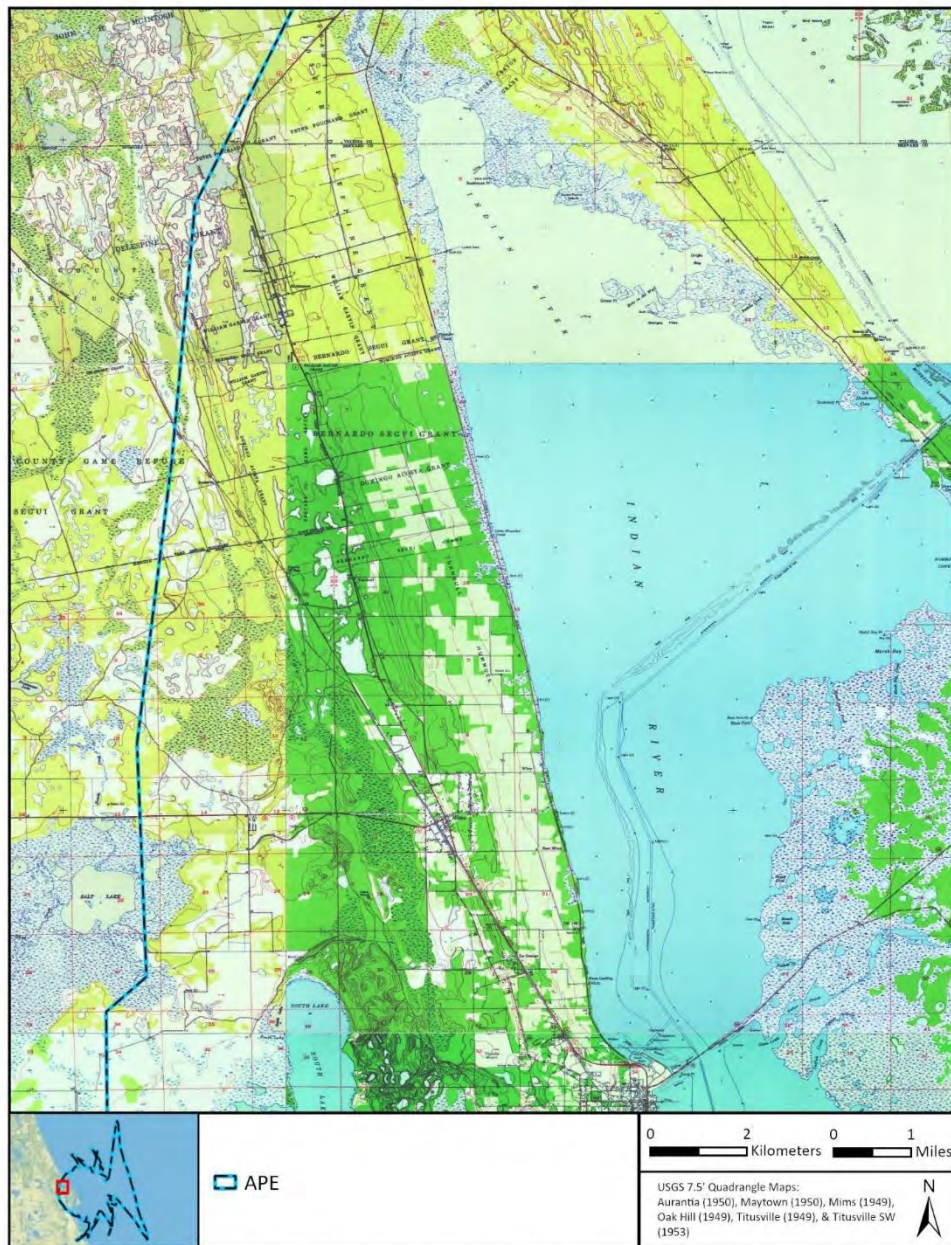
General Highway Map of Brevard County (FSRD 1935a).



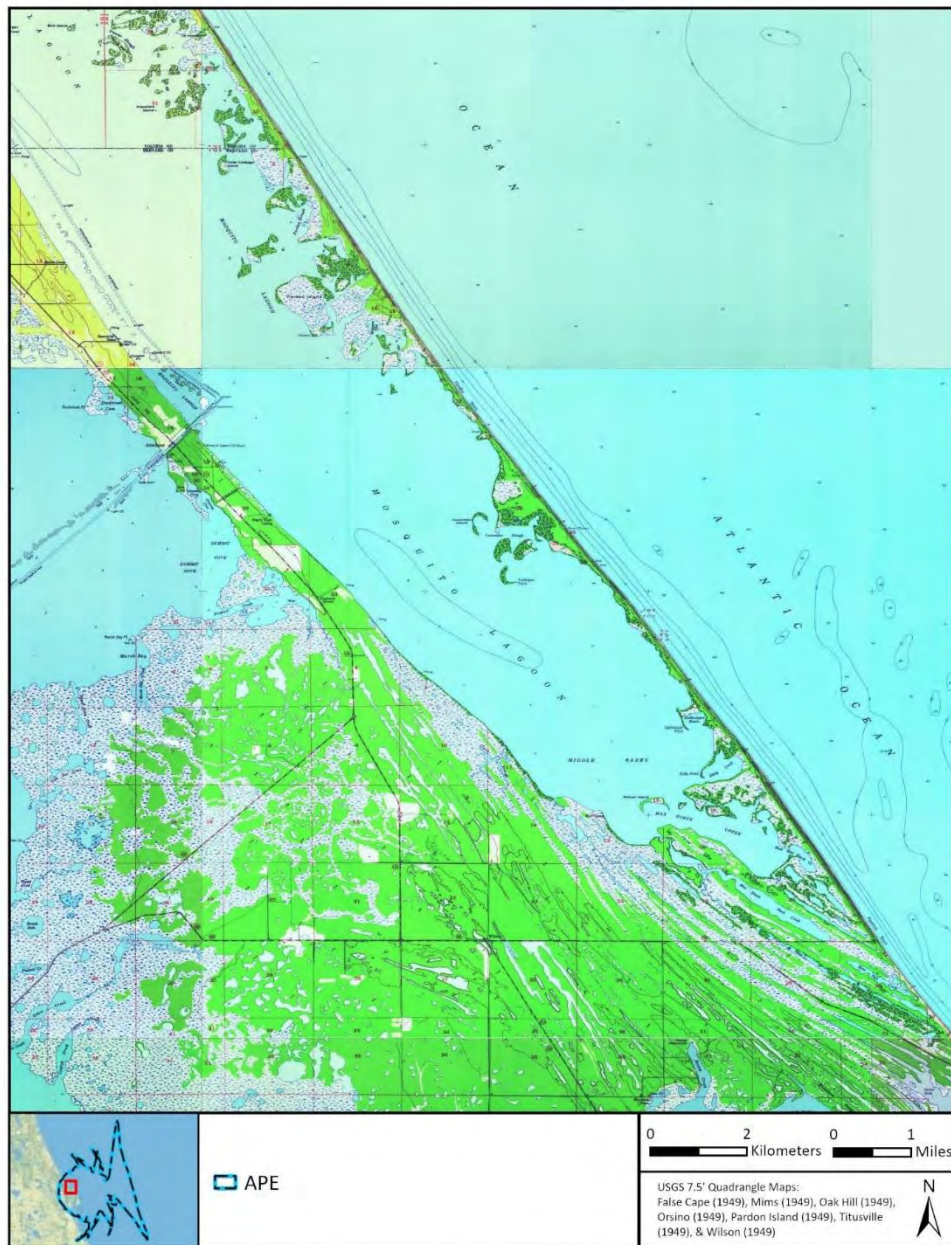


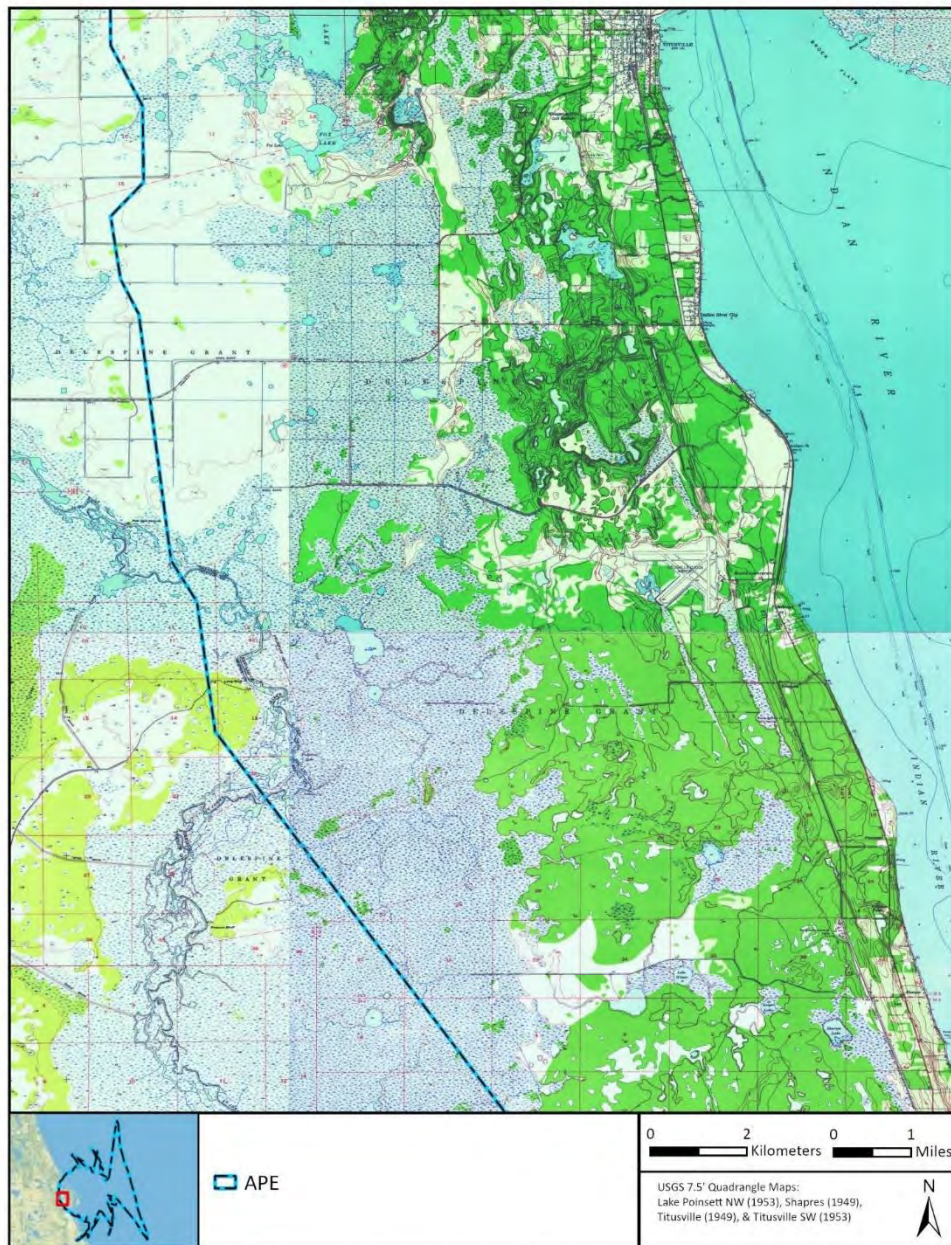


Ariel, Edgewater, Maytown and Oak Hill, FL USGS topographic maps (USGS 1949i, 1950a, 1950c, 1950d).

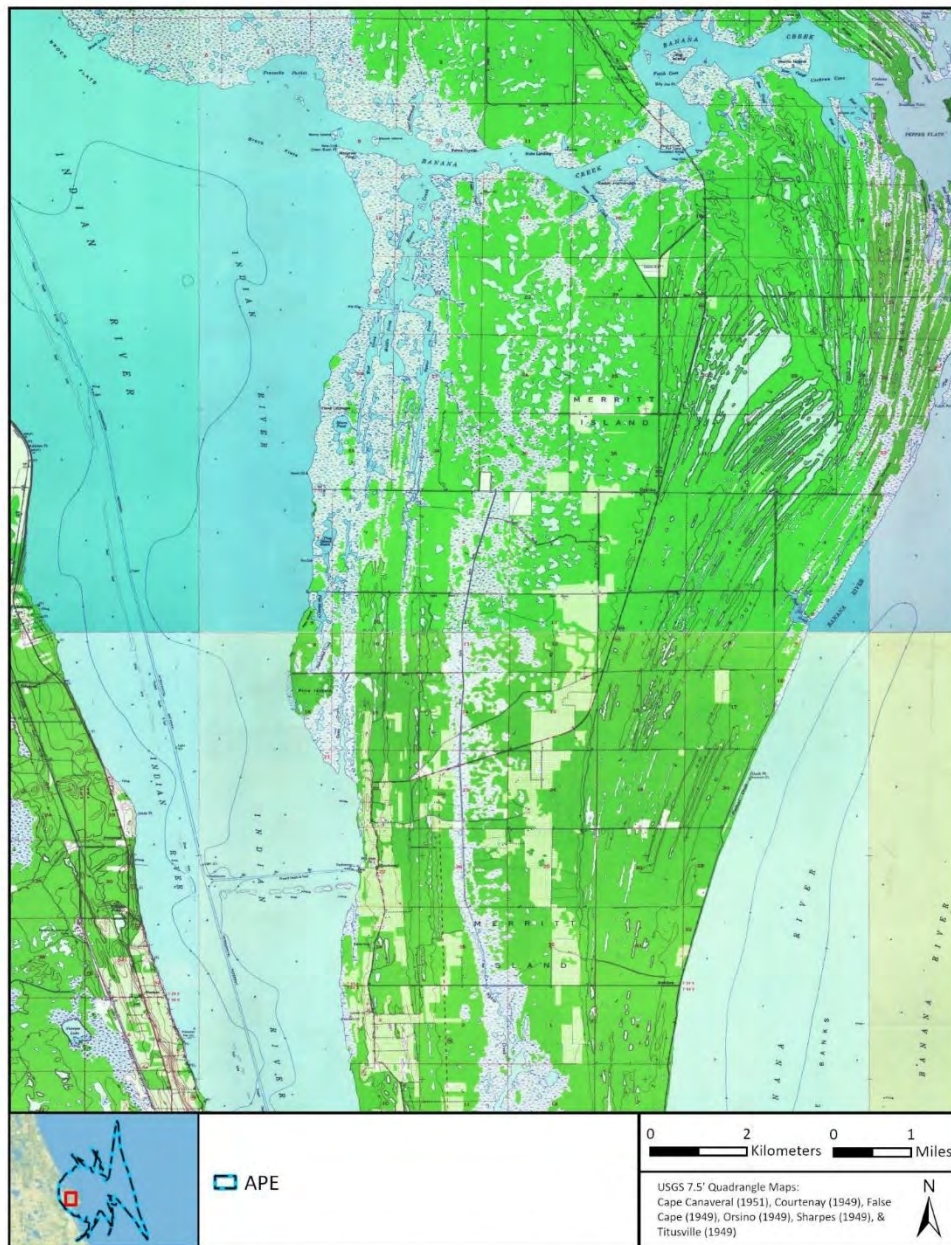


Aurantia, Maytown, Mims, Oak Hill, Titusville, and Titusville SW, FL USGS topographic maps (USGS 1949h, 1949i, 1949o, 1950b, 1950d, 1953c).

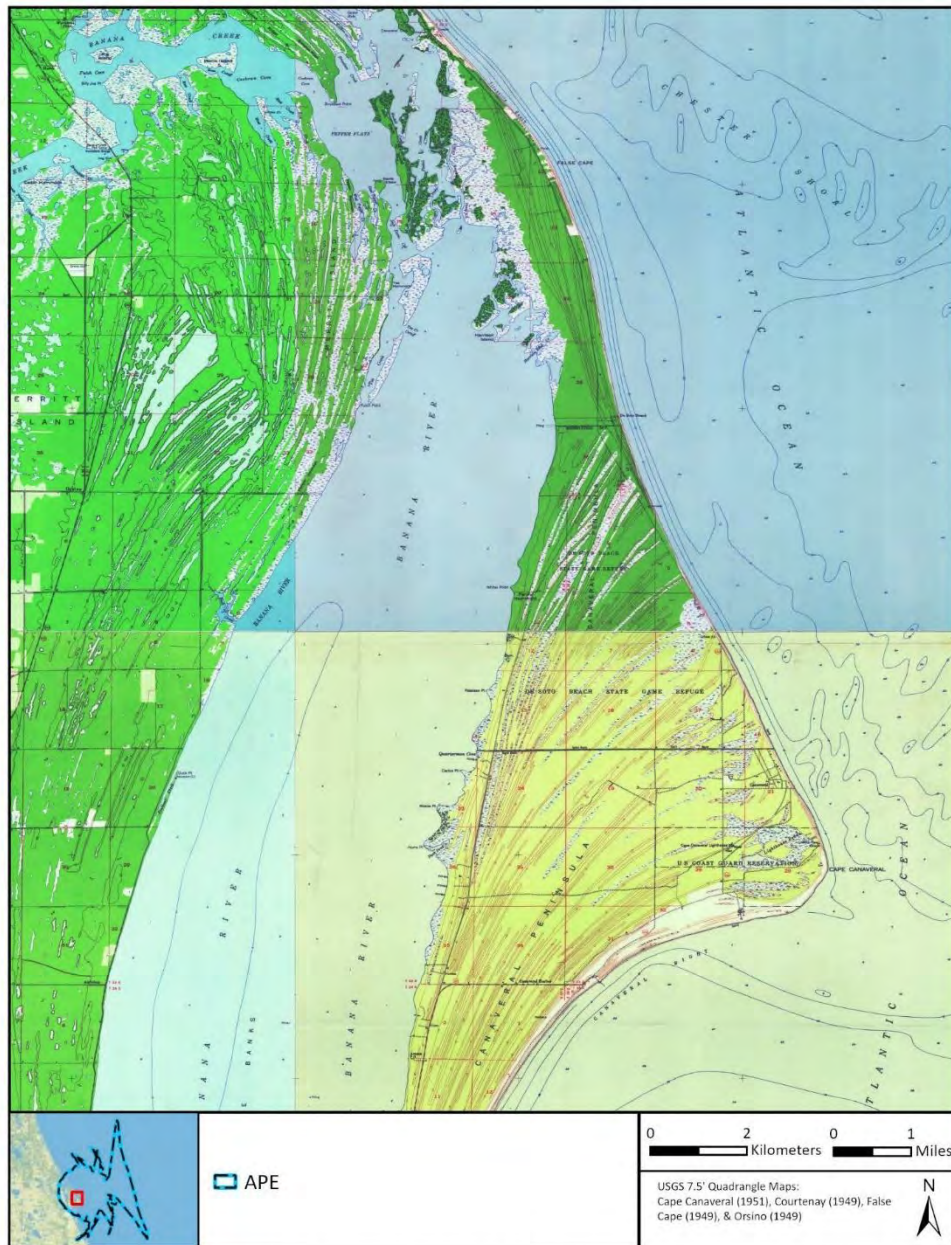




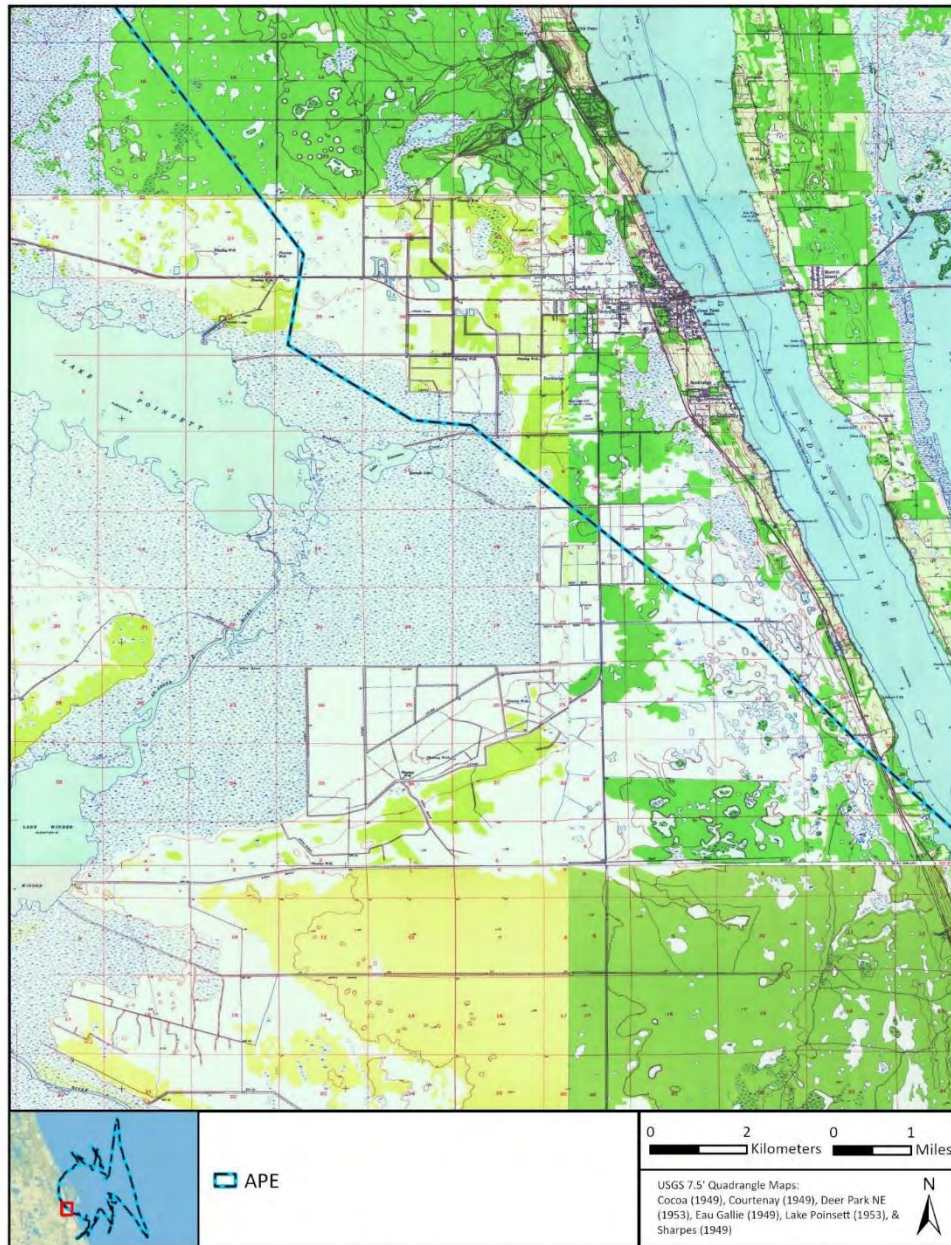
Lake Pointsett NW, Sharpes, Titusville, and Titusville SW, FL USGS topographic maps (USGS 1949n, 1949o, 1953b, 1953c).



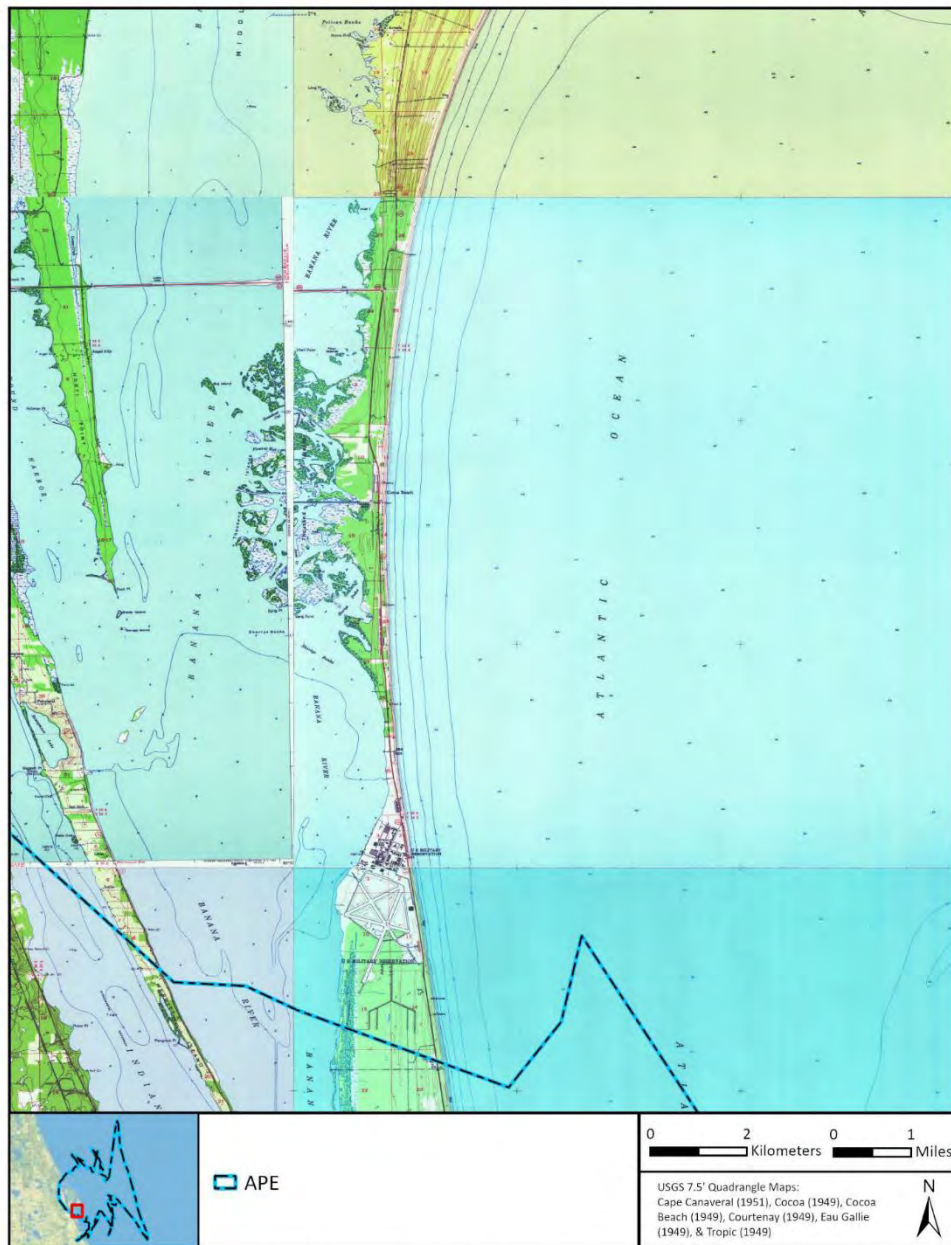
Cape Canaveral, Courtenay, False Cape, Orsino, Sharpes, and Titusville, FL USGS topographic maps (USGS 1949c, 1949e, 1949j, 1949n, 1949o).



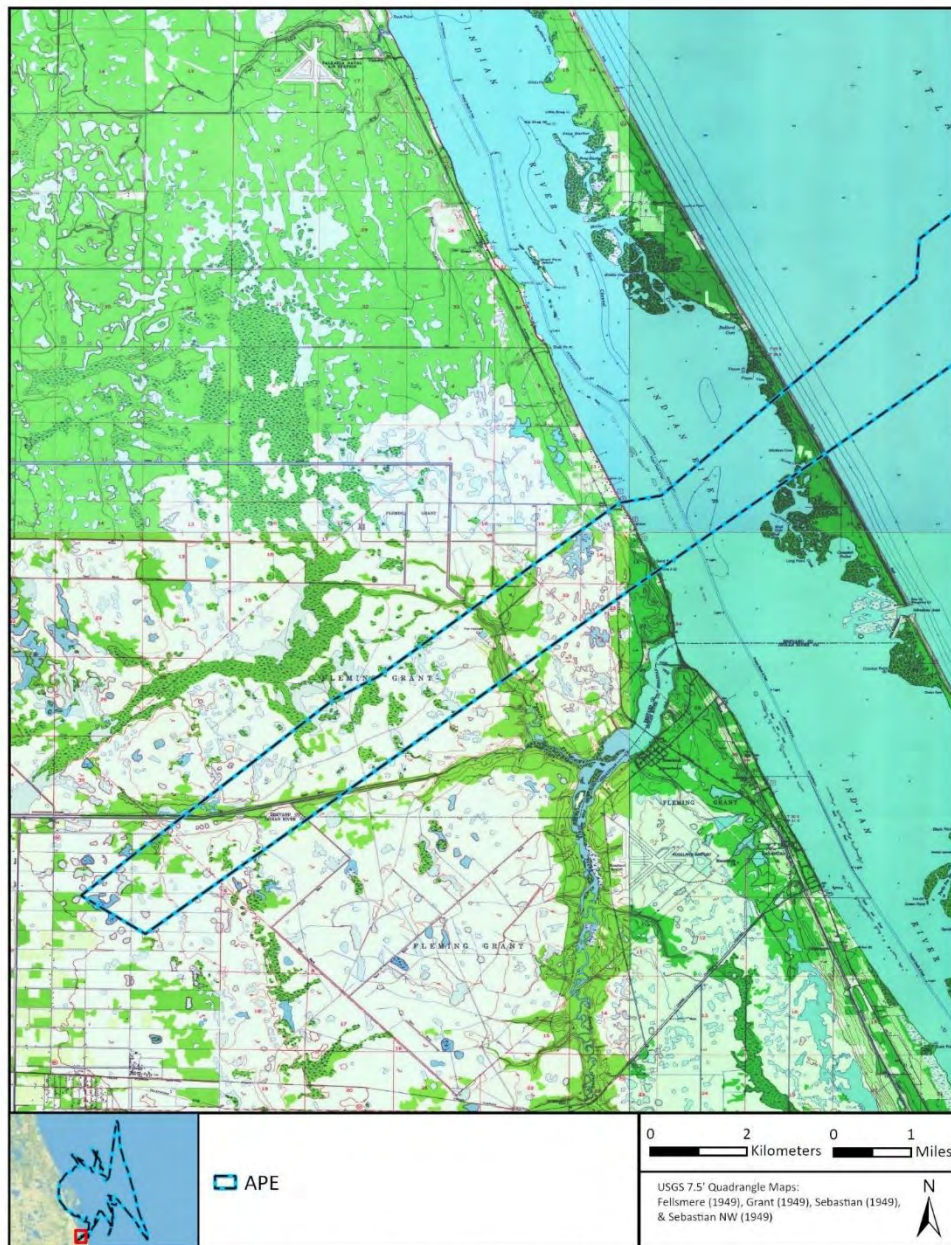
Cape Canaveral, Courtenay, False Cape, and Orsino, FL USGS topographic maps (USGS 1949c, 1949e, 1949j, 1951).



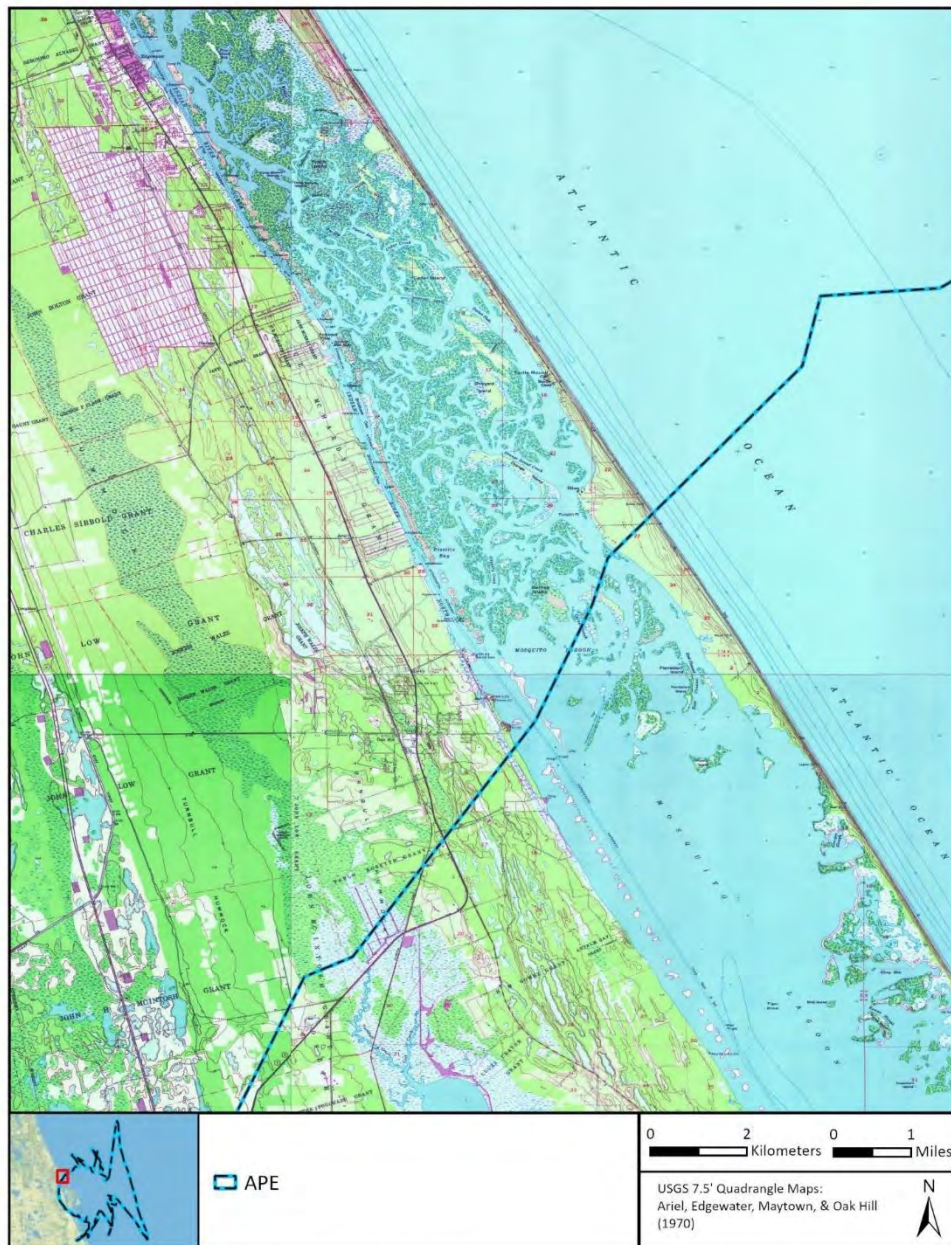
Cocoa, Courtenay, Deer Park NE, Eau Gallie, Lake Poinsett NW, and Sharpes, FL USGS topographic maps (USGS 1949a, 1949c, 1949d, 1949e, 1949n, 1953a, 1953b).



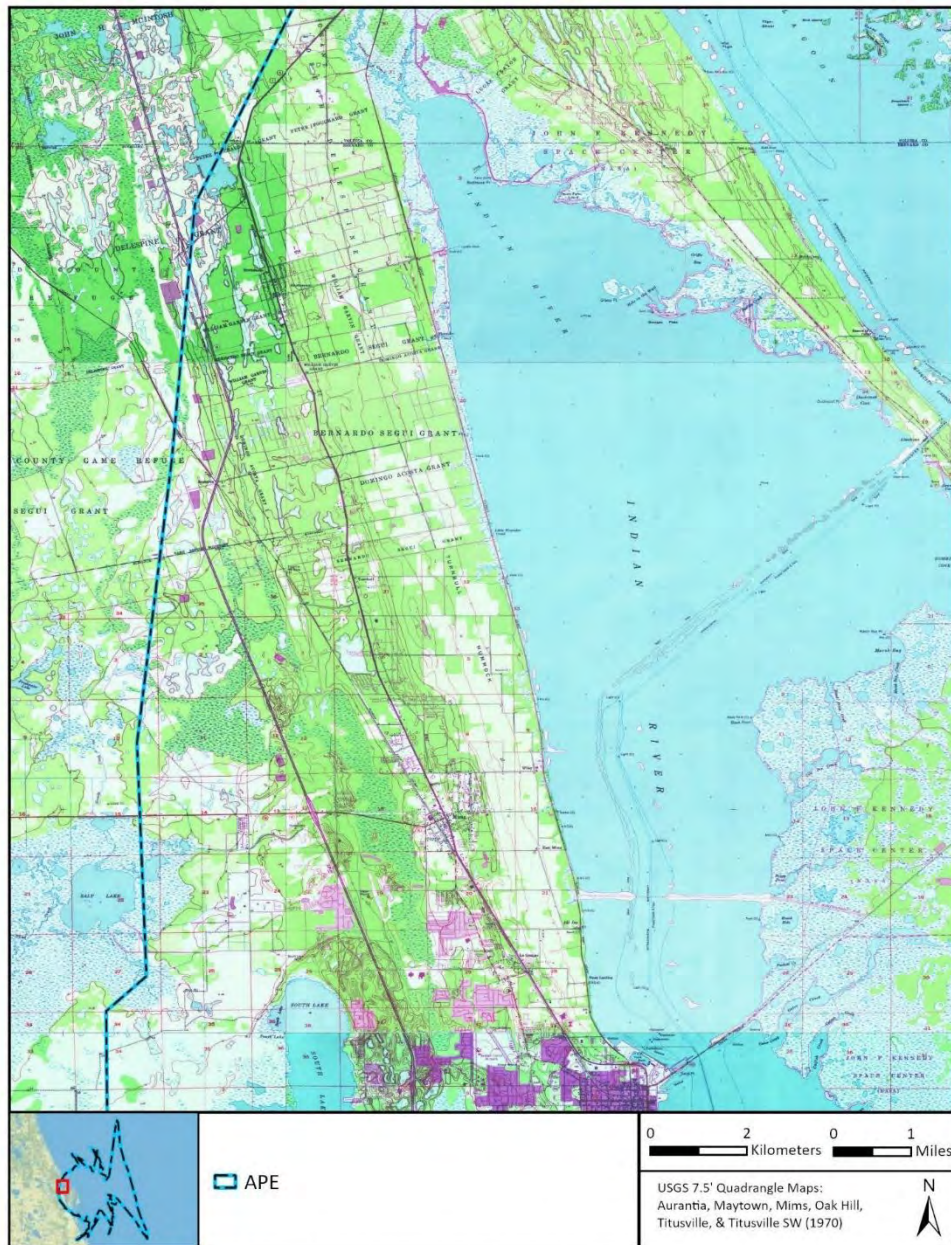
Cape Canaveral, Cocoa, Cocoa Beach, Courtenay, Eau Gallie, and Tropic, FL USGS topographic maps (USGS 1949a, 1949b, 1949c, 1949d, 1949p, 1951).



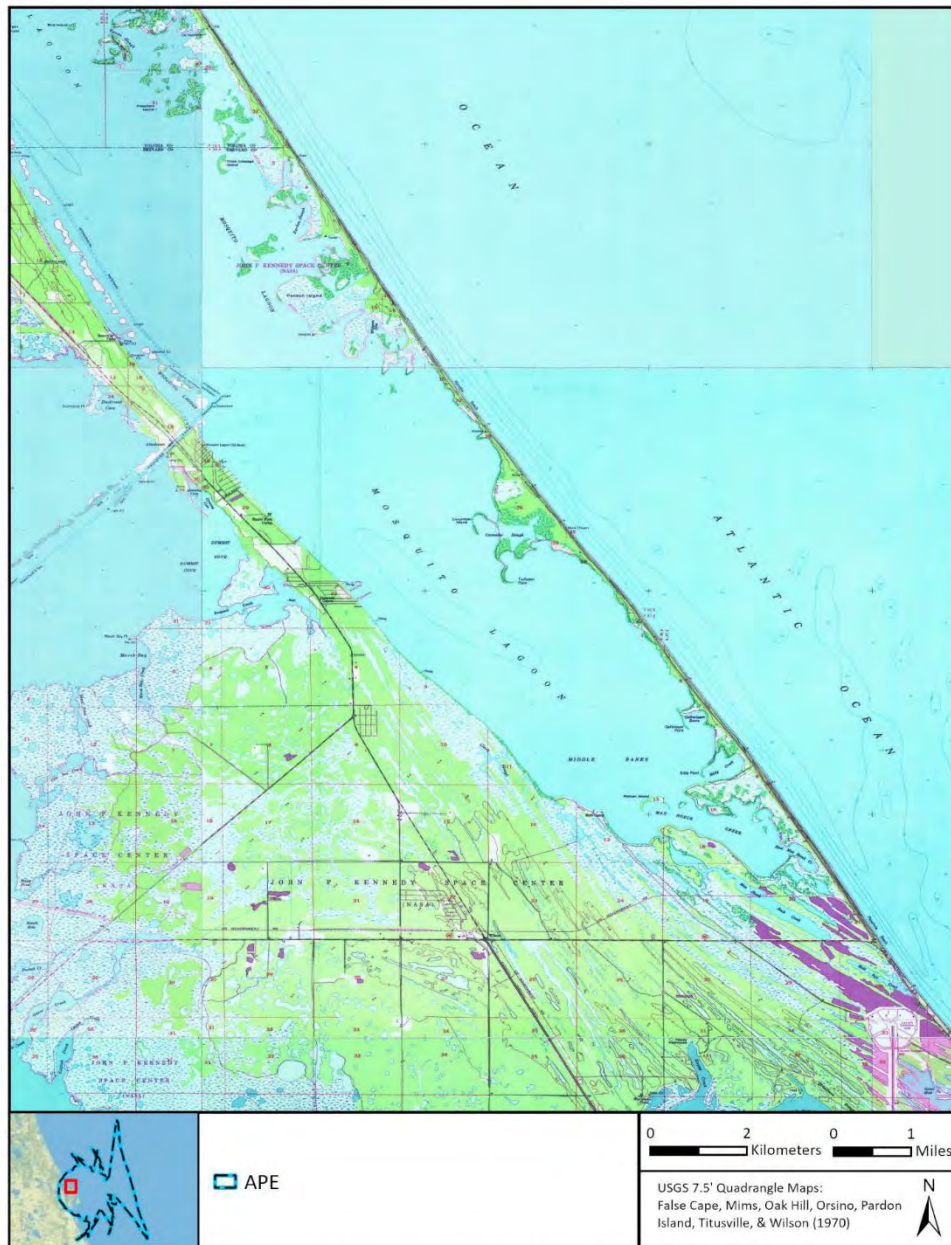
Fellsmere, Grant, Sebastian and Sebastian NW, FL USGS topographic maps (USGS 1949f, 1949g, 1949i, 1949m).



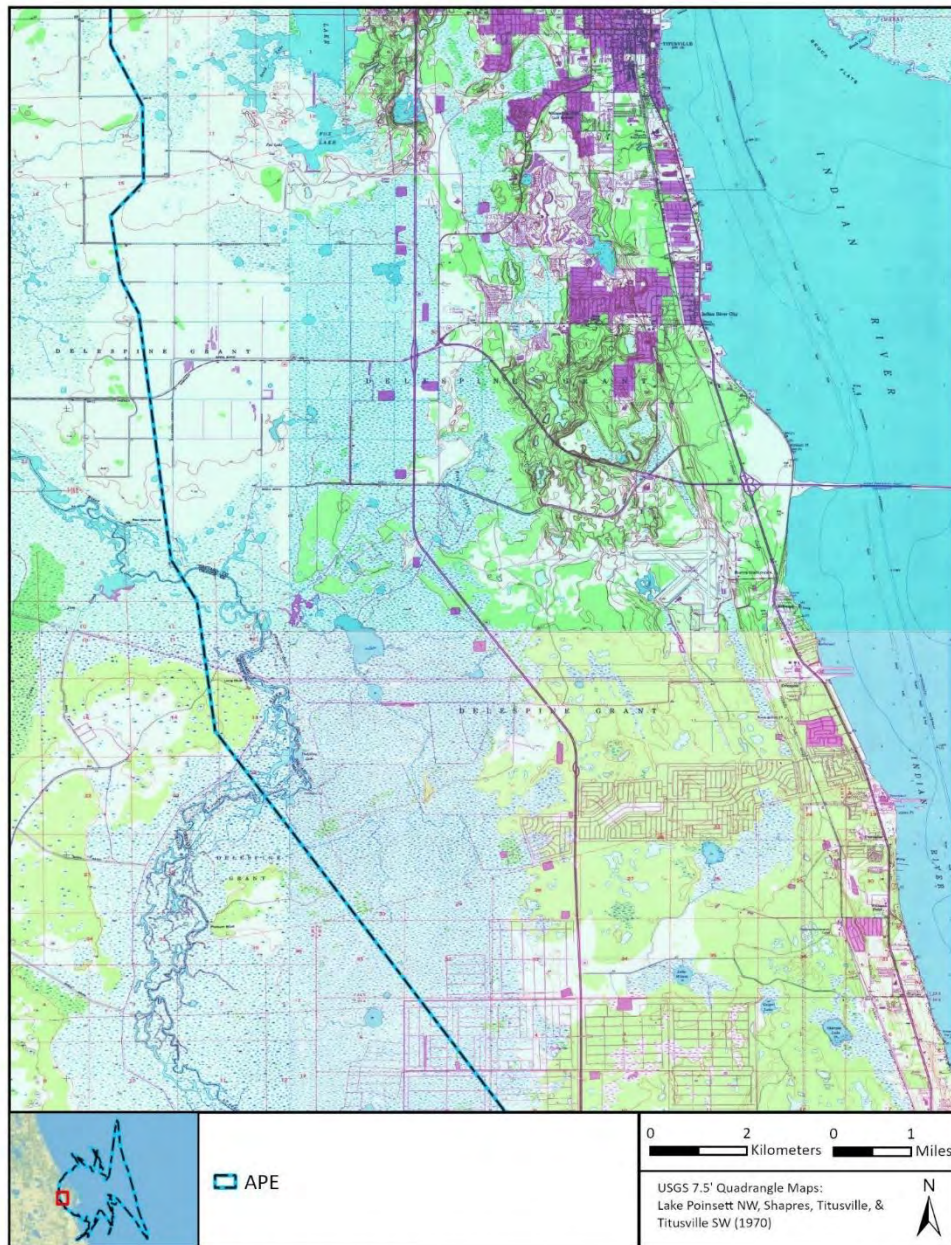
Ariel, Edgewater, Maytown, and Oak Hill, FL USGS topographic maps (USGS 1970a, 1970i, 1970n, 1970p).



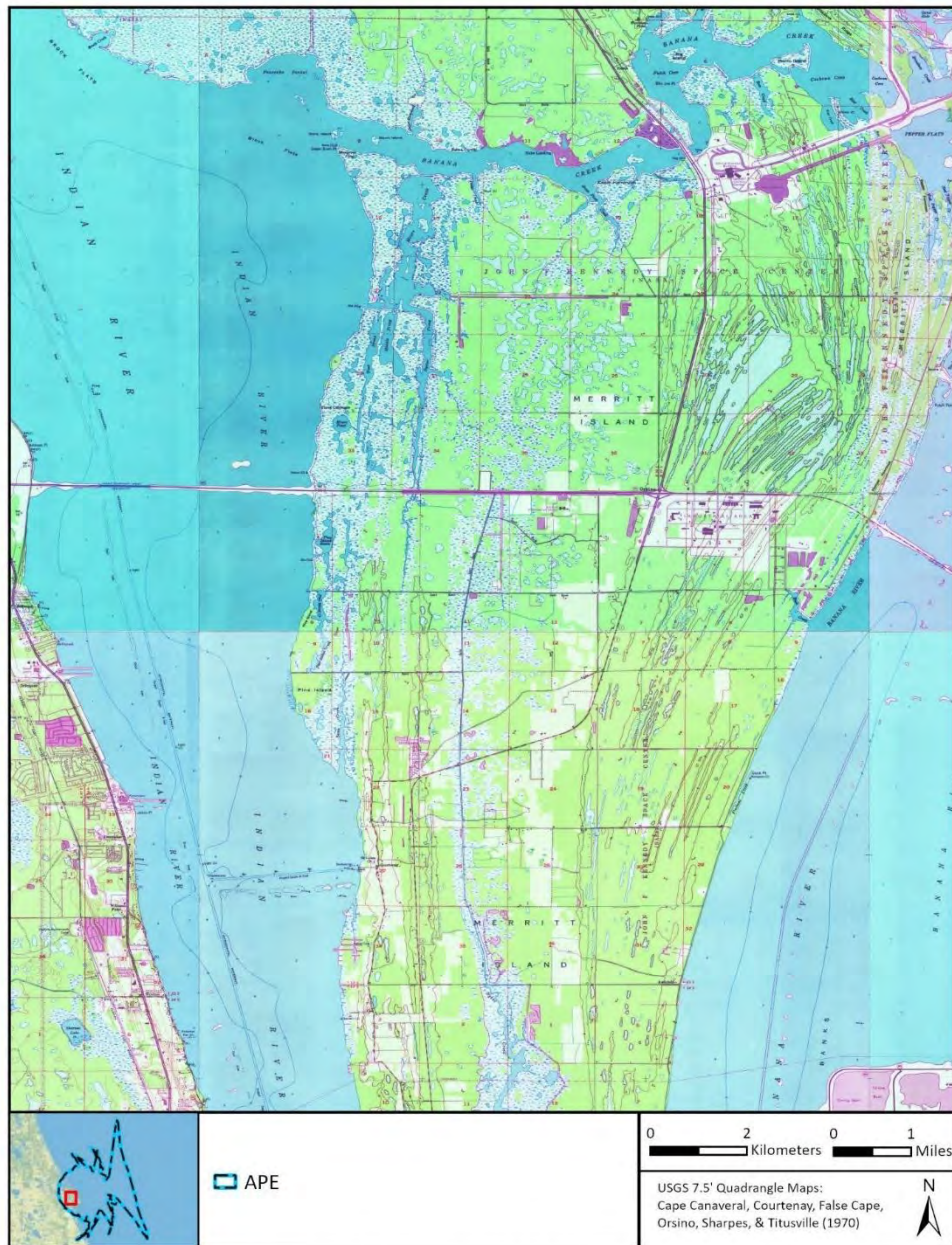
Aventura, Maytown, Mims, Oak Hill, Titusville and Titusville SW, FL USGS topographic maps (USGS 1970b, 1970n, 1970o, 1970p, 1970v, 1970w).



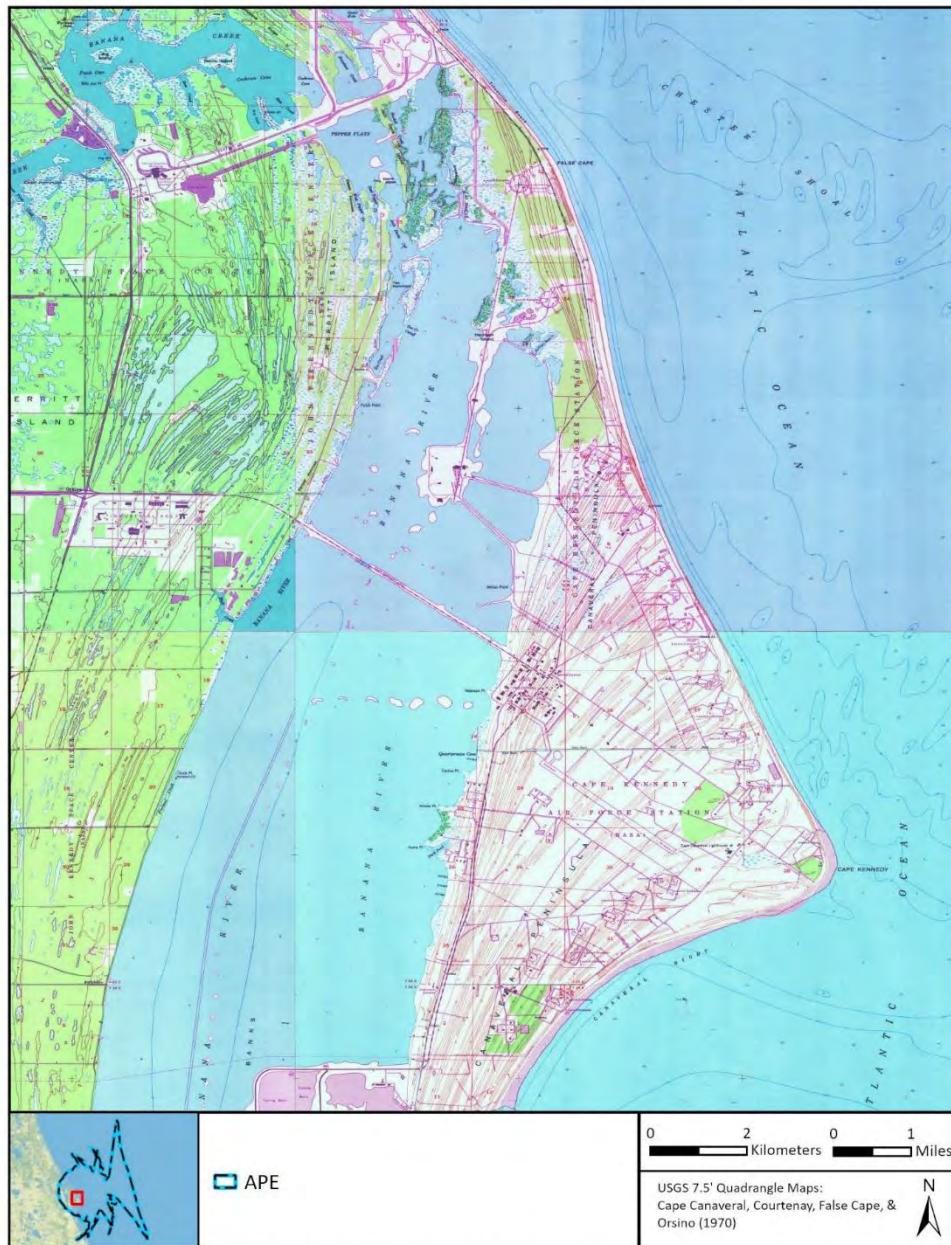
False Cape, Mims, Oak Hills, Orsino, Pardon Island, Titusville and Wilson, FL USGS topographic maps (USGS 1970j, 1970o, 1970p, 1970q, 1970r, 1970v, 1970y).



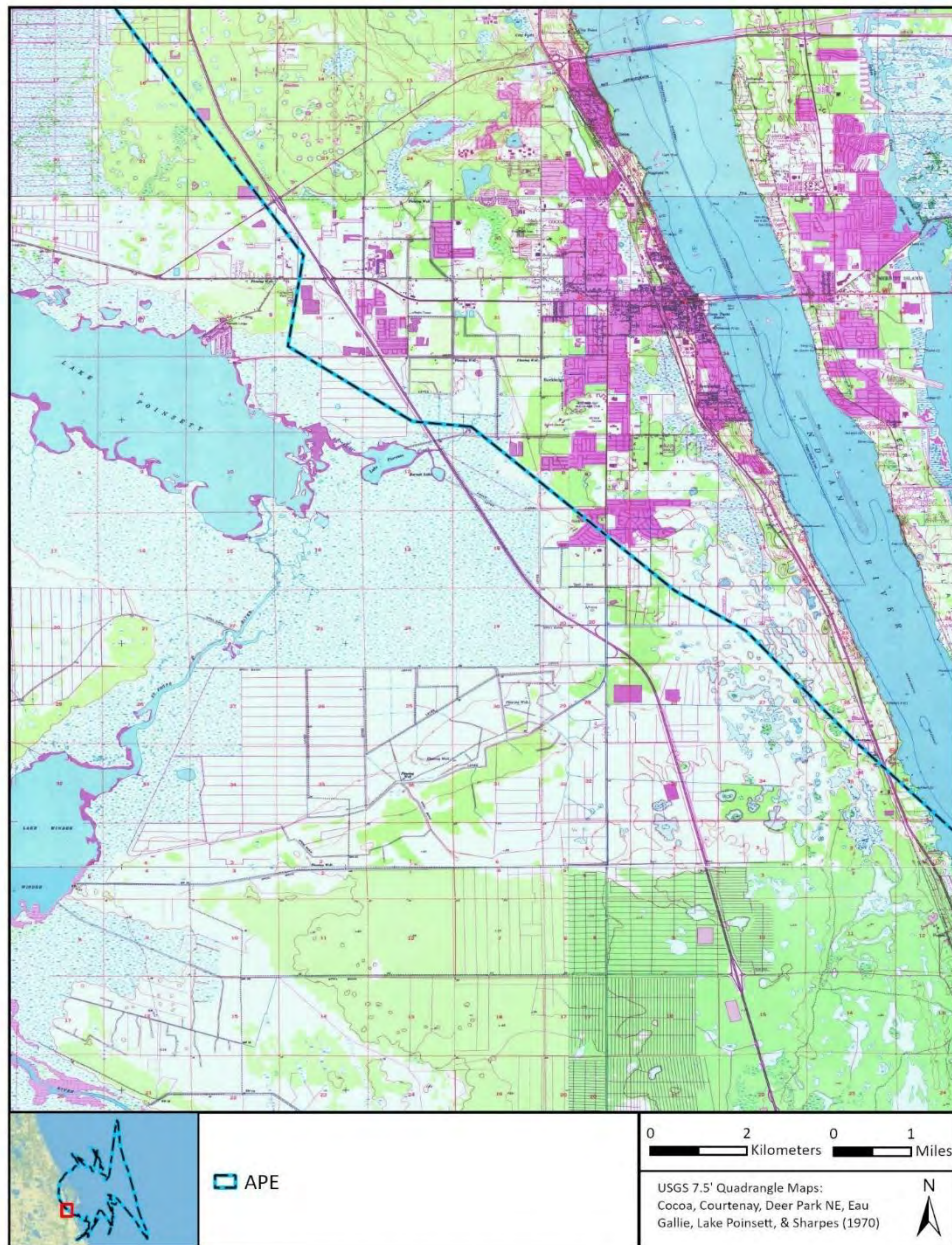
Lake Poinsett NW, Sharpes, Titusville and Titusville SW, FL USGS topographic maps (USGS 1970m, 1970u, 1970v, 1970w).



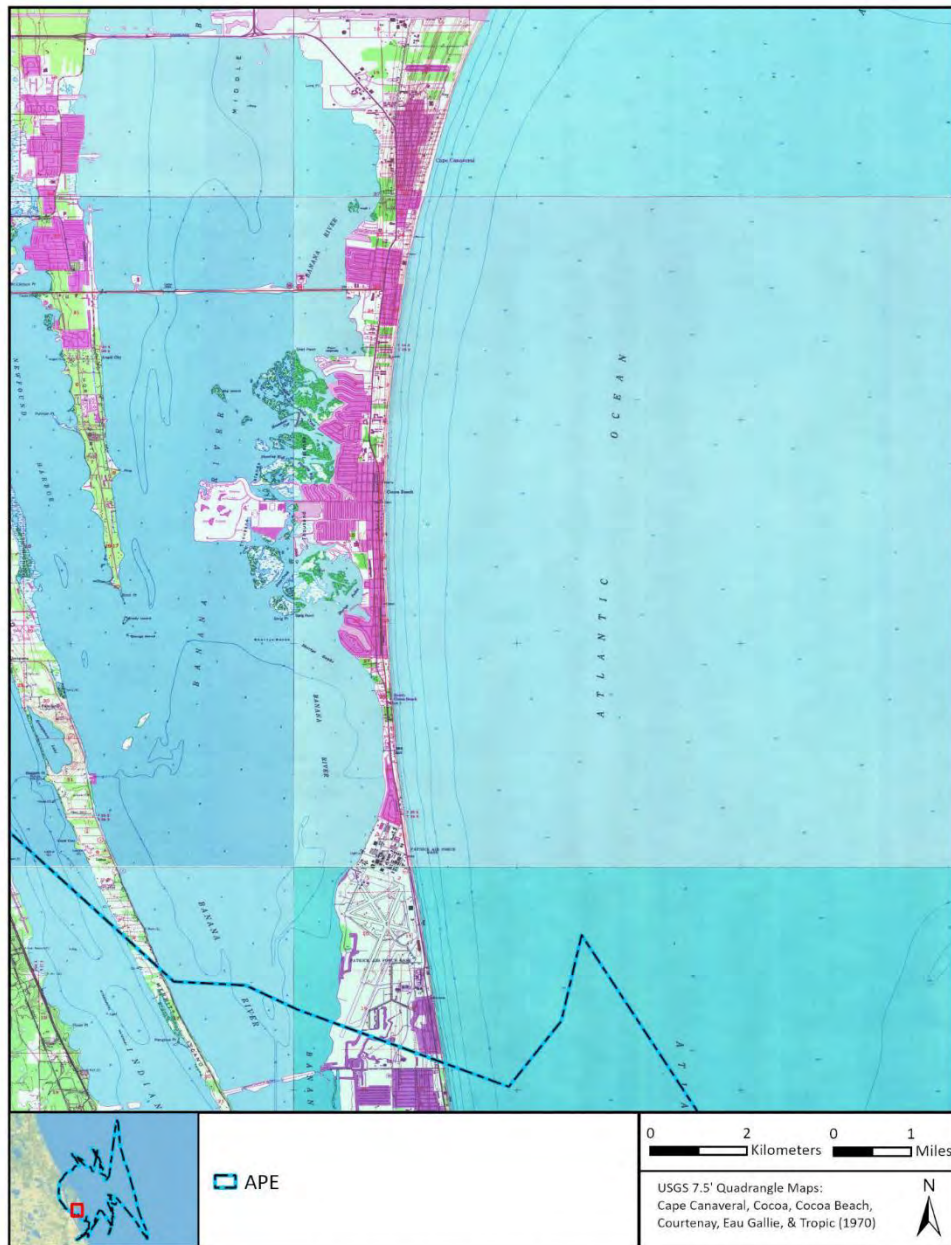
Cape Canaveral, Courtenay, False Cape, Orsino, Sharpes and Titusville, FL USGS topographic maps (USGS 1970c, 1970f, 1970j, 1970q, 1970u, 1970v).



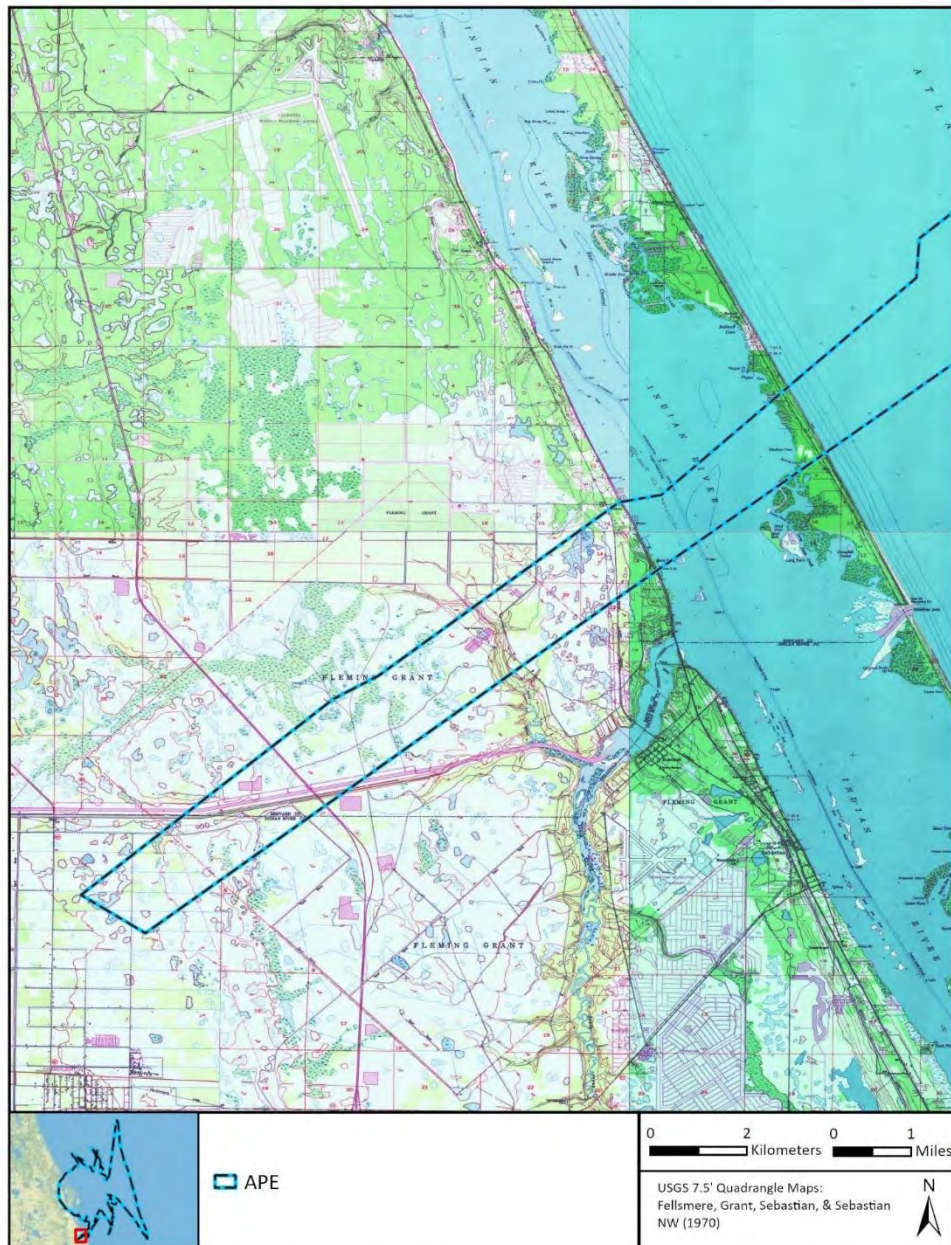
Cape Canaveral, Courtenay, False Cape, and Orsino, FL USGS topographic maps (USGS 1970c, 1970f, 1970j, 1970q).



Cocoa, Courtenay, Deer Park NE, Eau Gallie, Lake Poinsett NW, and Sharpes, FL USGS topographic maps (USGS 1970d, 1970f, 1970g, 1970h, 1970m, 1970u).



Cape Canaveral, Cocoa, Cocoa Beach, Courtenay, Eau Gallie, and Tropic, FL USGS topographic maps (USGS 1970c, 1970d, 1970e, 1970f, 1970h, 1970x).



Fellsmere, Grant, Sebastian and Sebastian NW, FL USGS topographic maps (USGS 1970k, 1970l, 1970s, 1970t).

APPENDIX C.

**INTENSIVE ARCHITECTURAL SURVEY RESULTS FIGURES:
RESOURCES DETERMINED NRHP ELIGIBLE OR POTENTIALLY
ELIGIBLE BY SHPO OR RECOMMENDED NRHP ELIGIBLE OR
POTENTIALLY ELIGIBLE WITHOUT SHPO DETERMINATIONS**











