

ENVIRONMENTAL IMPACT STATEMENT

SPACEX STARSHIP-SUPER HEAVY LAUNCH VEHICLE AT LAUNCH COMPLEX 39A

at the Kennedy Space Center, Merritt Island, Florida

Final, Volume II, Appendix B.3, Part 9

January 2026



**Federal Aviation
Administration**

THIS PAGE INTENTIONALLY LEFT BLANK.

TABLE OF CONTENTS

Appendix B	Regulatory Consultations	B-1
B.3	National Historic Preservation Act Section 106 Consultation (Florida SHPO)	B-1
B.3.1	NHPA Section 106 Programmatic Agreement	B-7
B.3.2	NHPA Section 106 Correspondence	B-37
B.3.3	NHPA Section 106 Cultural Resources Assessment.....	B-394

THIS PAGE INTENTIONALLY LEFT BLANK.

APPENDIX D.

**INTENSIVE ARCHITECTURAL HISTORY SURVEY RESULTS
FIGURES: RESOURCES WITHIN EXISTING RESOURCE GROUP
BOUNDARIES, THOSE WITHOUT DETERMINATIONS OR
RECOMMENDATIONS, AND CEMETERIES WITHOUT
DETERMINATIONS OR RECOMMENDATIONS**

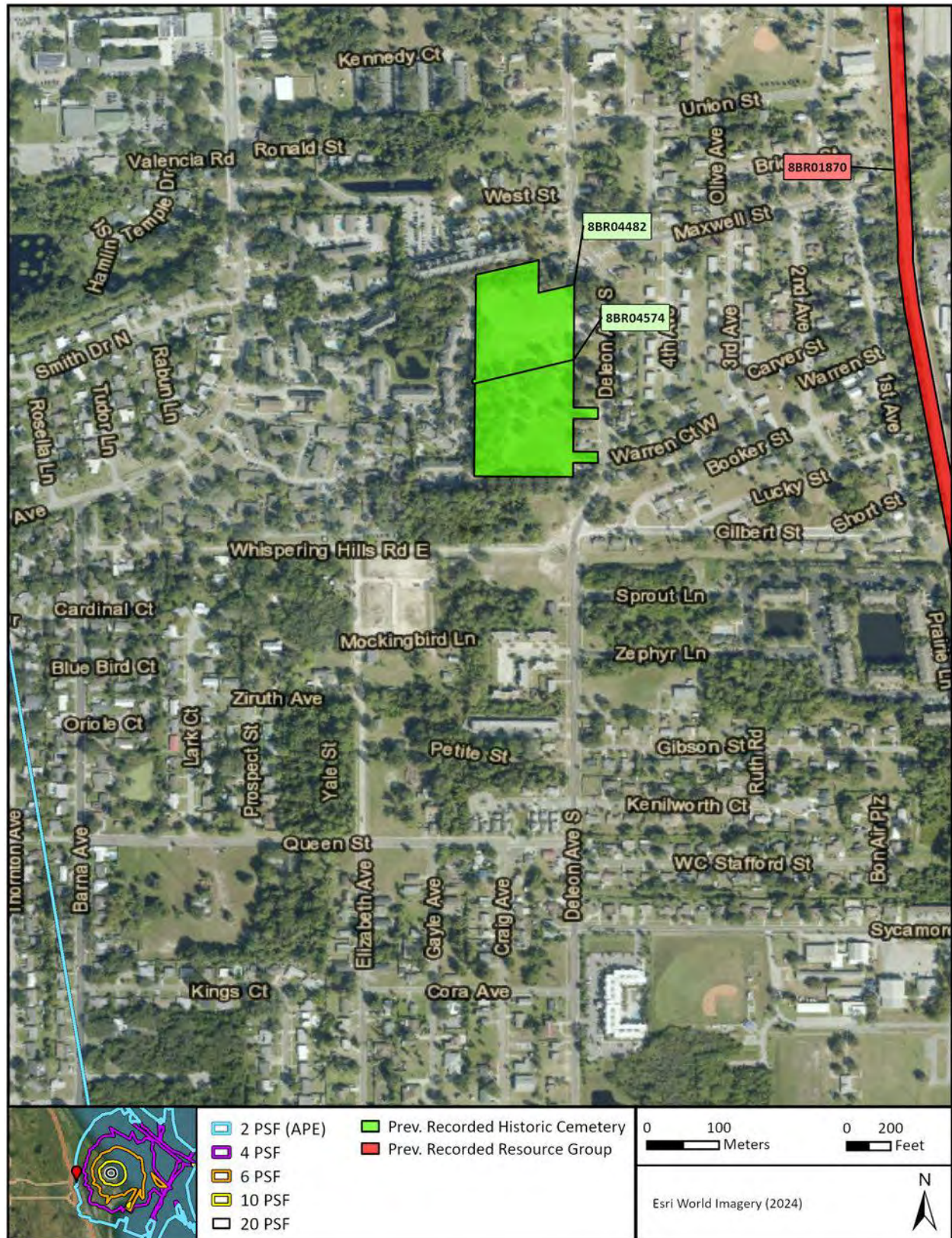




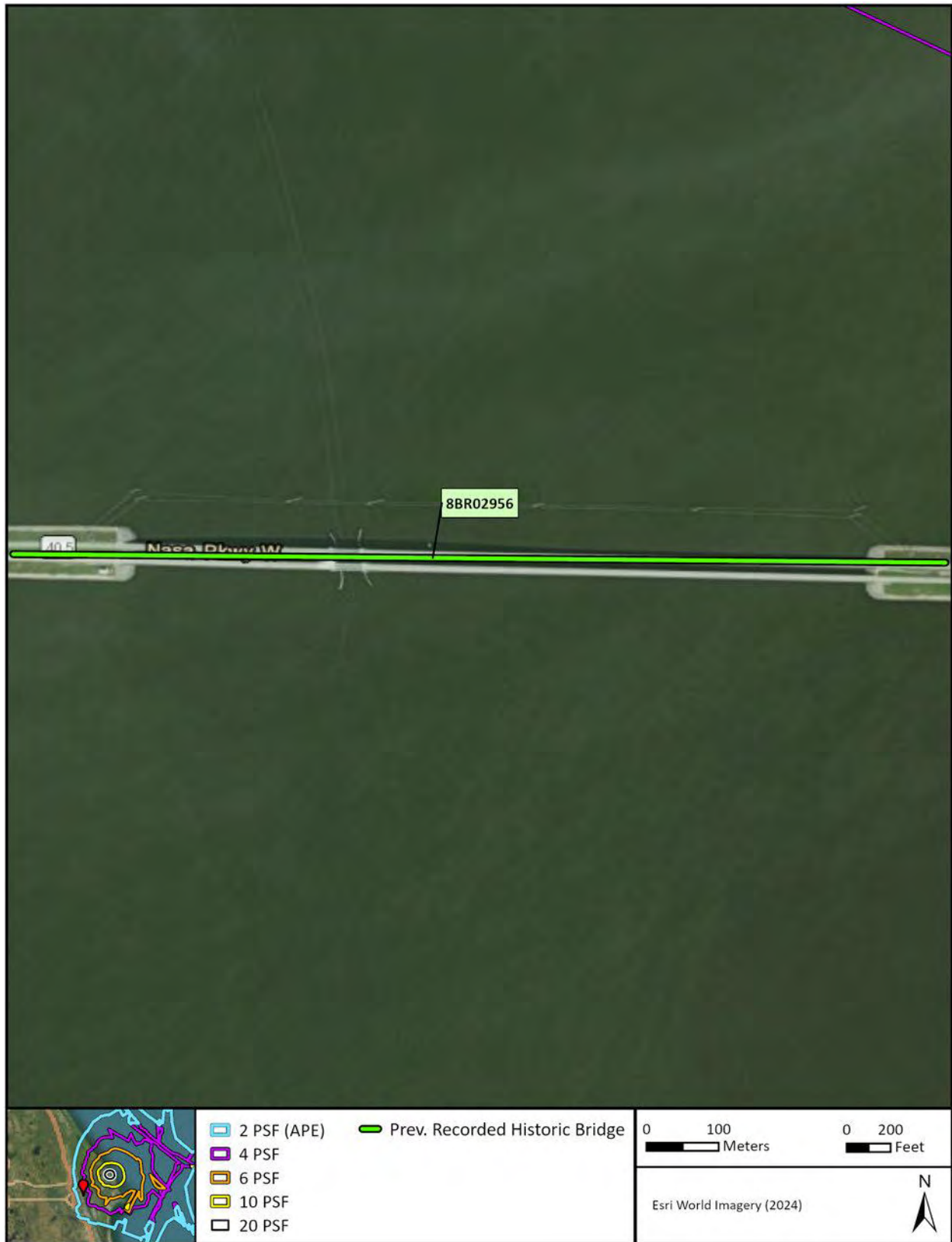




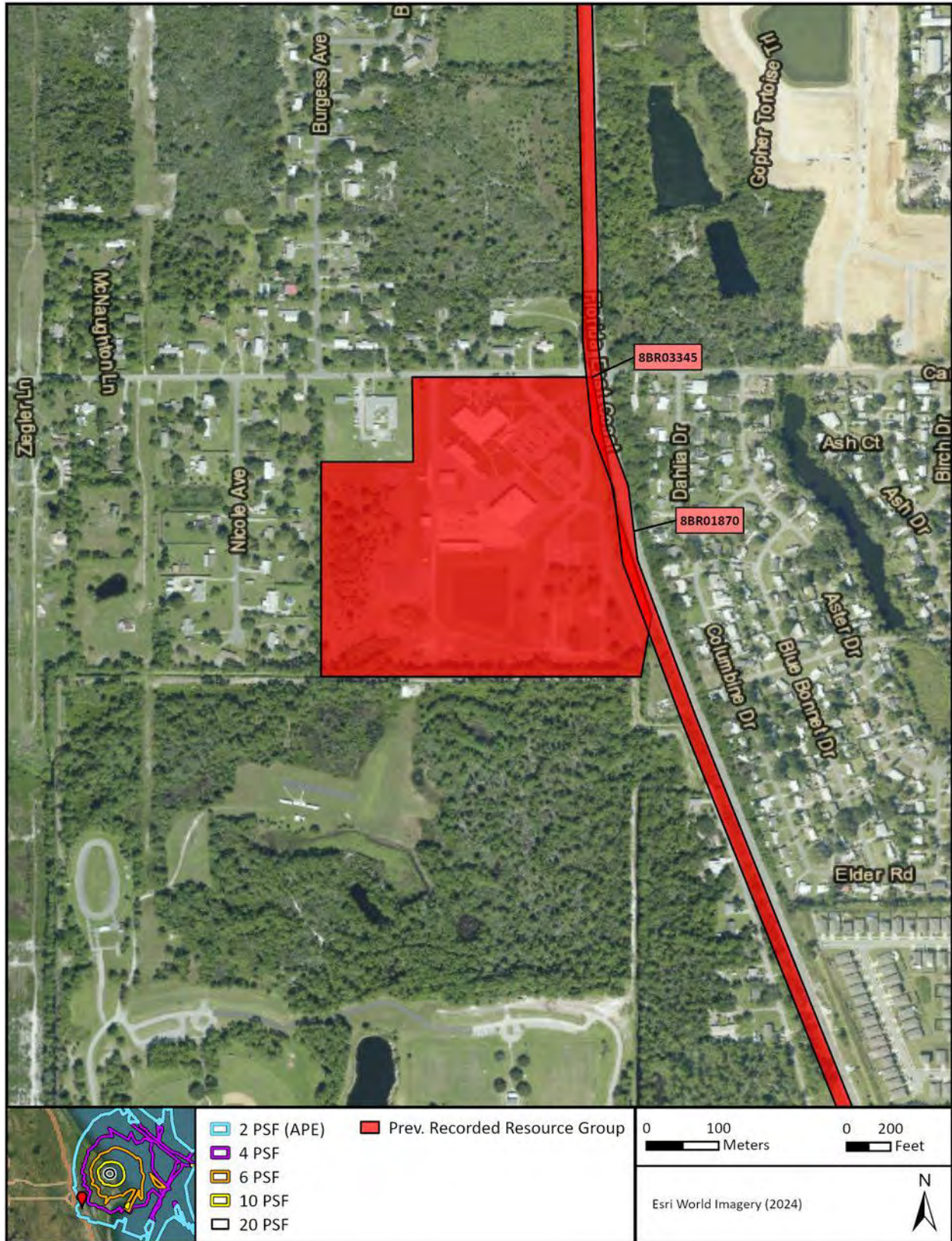




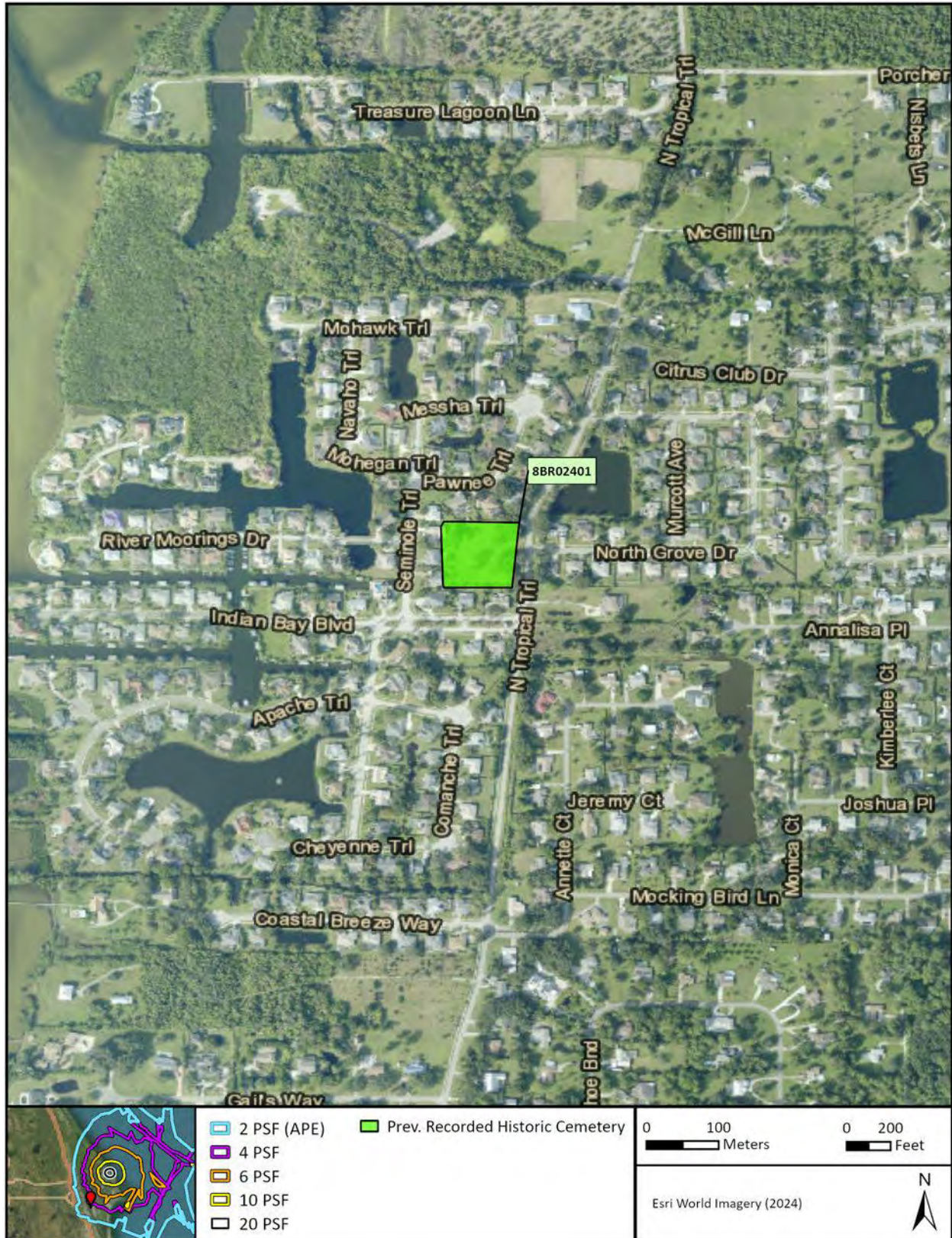




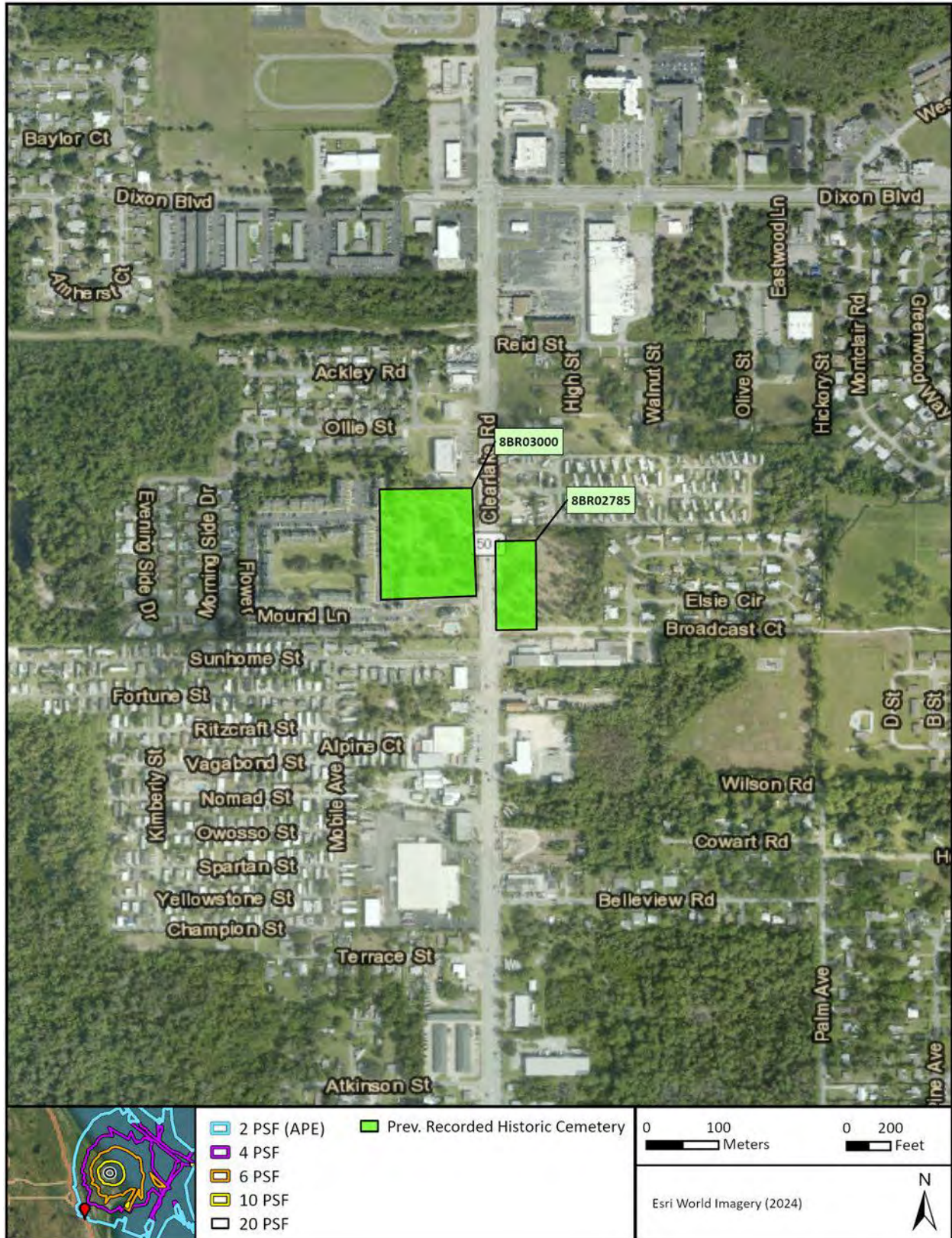


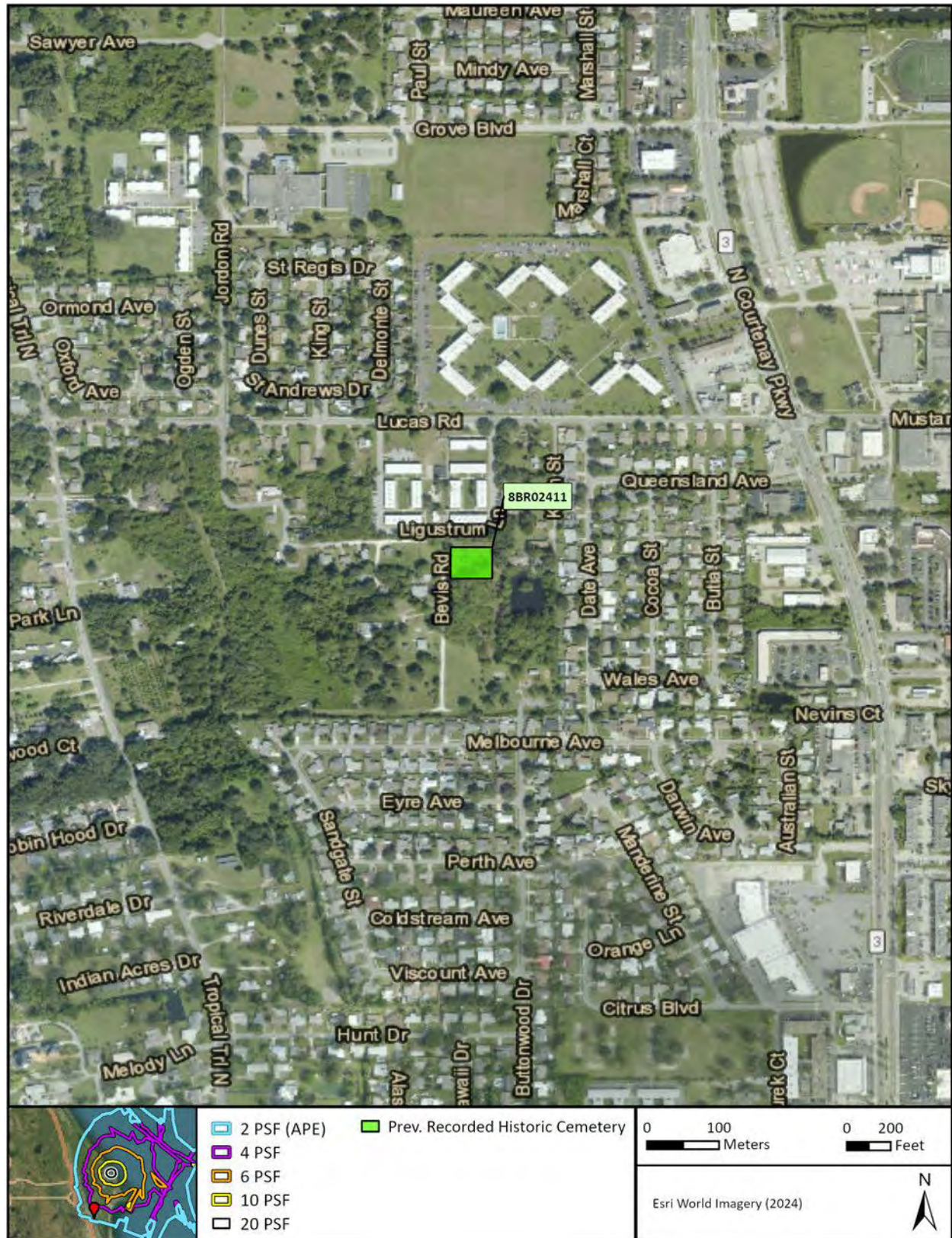






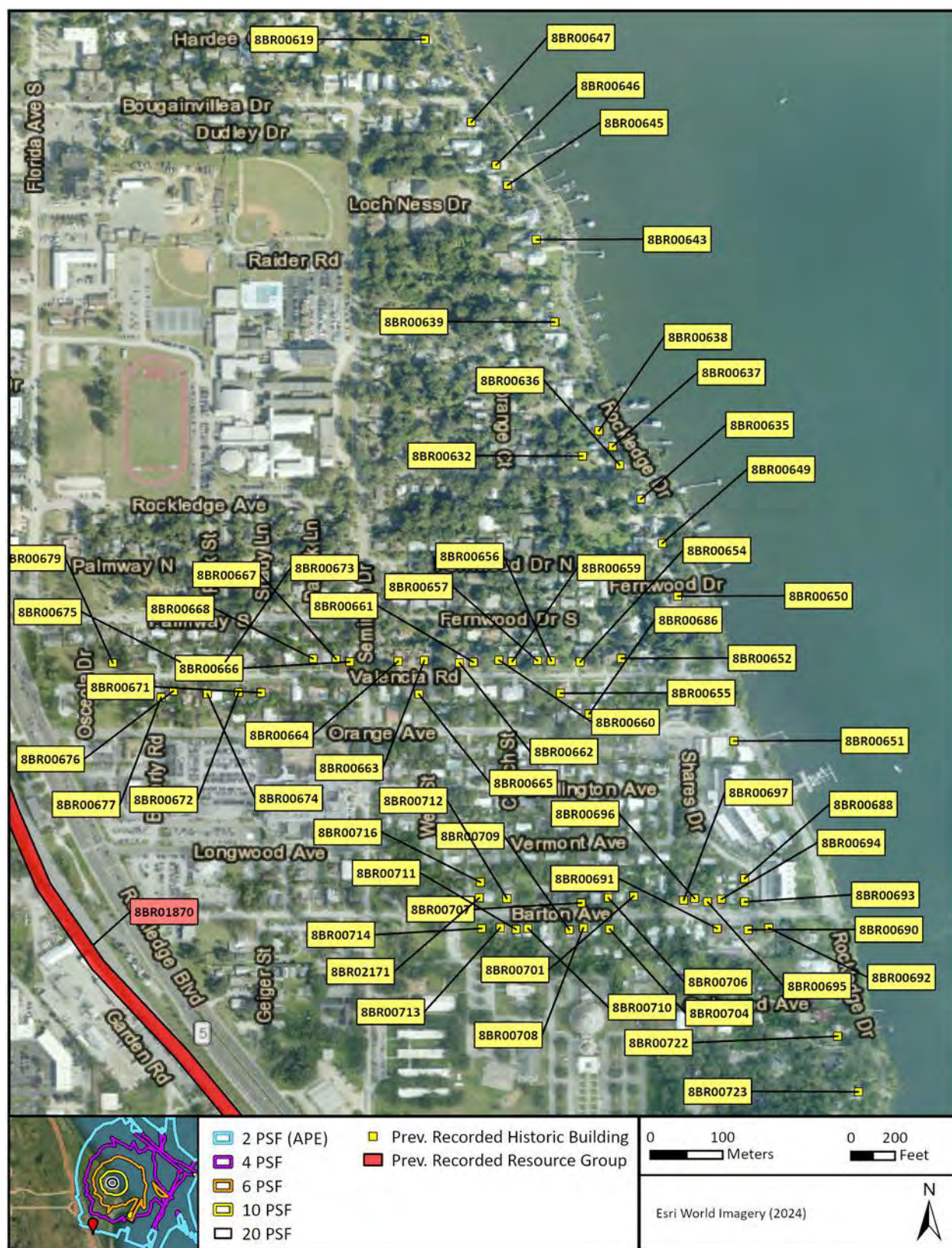




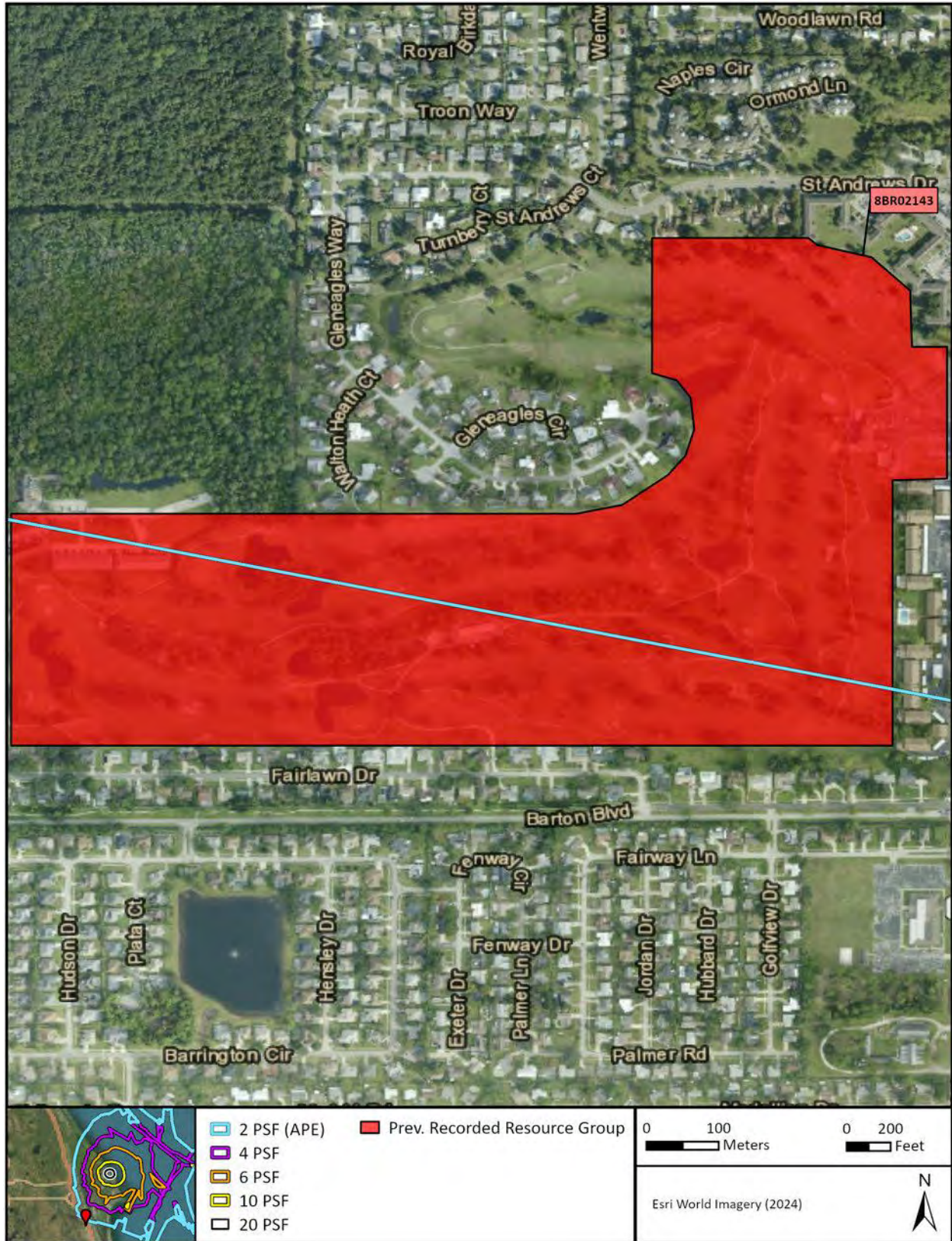












APPENDIX E.
PREVIOUSLY RECORDED ARCHAEOLOGICAL RESOURCES

Site ID	Site Name	General Site Type	NRHP Status	psf Threshold
8BR00540	Daigle Place	Building remains	Not evaluated	6
8BR00541	Hughes Place	Building remains	Ineligible	6
8BR00542	Parsons Place	Building remains	Ineligible	4
8BR00543	Griffith Place	Building remains	Ineligible	6
8BR00544	Lopez Orchard	Building remains	Not evaluated	6
8BR00031	No name	Precontact mound(s)	Not evaluated	2
8BR00060	No name	Habitation (precontact)	Not evaluated	2
8BR00061	No name	Habitation (precontact)	Not evaluated	4
8BR00062*	Moore Mound	Precontact mound(s)	Not evaluated	4
8BR00063*	Sams Mound	Precontact mound(s)	Not evaluated	4
8BR00064*	Tiffin Mound	Precontact mound(s)	Ineligible	4
8BR00065	No name	Precontact mound(s)	Not evaluated	2
8BR00066	No name	Precontact mound(s)	Not evaluated	2
8BR00067	No name	Precontact shell midden	Not evaluated	2
8BR00068	No name	Precontact shell midden	Not evaluated	2
8BR00069*	No name	Precontact mound(s)	Not evaluated	2
8BR00070	No name	Precontact shell midden	Not evaluated	2
8BR00071	No name	Precontact shell midden	Not evaluated	2
8BR00076	Haulover	Land-terrestrial	Not evaluated	2
8BR00077*	Naumans Place	Precontact burial(s)	Not evaluated	4
8BR00078	Dummett's Place	Building remains	Not evaluated	4
8BR00078A	Dummett Midden	Land-terrestrial	Ineligible	4
8BR00078B	Dummett Homestead	Building remains	Potentially Eligible	4
8BR00078C	Duke's Castle	Building remains	Ineligible	4
8BR00078D	Dummett's Grove	Land-terrestrial	Potentially Eligible	4
8BR00079	Titusville Beach: Chester Shoals	Building remains	Ineligible	20
8BR00082	De Soto Grove Midden	Campsite (precontact)	Eligible	6
8BR00082A*	De Soto Grove Midden A	Homestead	Eligible	6
8BR00082B	De Soto Grove Midden B	Habitation (precontact)	Not evaluated	6
8BR00083*	De Soto Grove Burial Mound	Land-terrestrial	Eligible	6
8BR00084	No name	Historic fort	Not evaluated	10
8BR00085*	Burns	Precontact mound(s)/ homestead	Insufficient Information	4
8BR00086*	Holmes Mound	Precontact mound(s)/ homestead	Eligible	4
8BR00087	Gulbransen Mound	Precontact mound(s)/ homestead	Not evaluated	4
8BR00088A*	Hammock Mound A	Precontact mound(s)/ homestead	Not evaluated	4
8BR00088B	Hammock Mound B	Homestead	Not evaluated	4
8BR00088C	Hammock Mound C	Precontact shell midden/ possible mound(s)	Not evaluated	4
8BR00089*	Norris Mound	Precontact mound(s)/ homestead	Not evaluated	4

Site ID	Site Name	General Site Type	NRHP Status	psf Threshold
8BR00090*	Fuller Mound A	Precontact mound(s)	Not evaluated	4
8BR00091*	Fuller Mound B	Precontact mound(s)	Not evaluated	4
8BR00092	Fuller Mound C	Precontact mound(s)	Not evaluated	4
8BR00093*	Fuller Mound D	Precontact mound(s)	Not evaluated	4
8BR00094*	Fuller Mound E	Precontact mound(s)	Not evaluated	4
8BR00095	Fuller Mound F	Precontact mound(s)	Not evaluated	4
8BR00096	Carter Midden	Land-terrestrial	Not evaluated	4
8BR00243H	Pier Road Houses Site H	Habitation (precontact)	Not evaluated	4
8BR01857	Samela Site	Campsite (precontact)	Not evaluated	2
8BR01872*	Sam's Site	Agriculture/ Farm structure	Eligible	4
8BR01819	3 POINT PIECES	Precontact lithics only, but not quarry	Ineligible	2
8BR02513	Facility 1390: Theodolite Tower 1.40	Building remains	Not evaluated	6
8BR02514	Facility 1090 Security Police Bldg	Building remains	Not evaluated	6
8BR02515	Cinetheodolite	Building remains	Ineligible	4
8BR02534	Navaho X-10 Drone Debris Site	Aircraft Wreckage/Crash Site	Eligible	6
8BR00139	Dummit Grove Ne	Land-terrestrial	Eligible	4
8BR00140*	Edwards	Precontact mound(s)/ destroyed	Not evaluated	2
8BR00142*	Butler Campbell's Mound	Precontact mound(s)	Not evaluated	2
8BR00143	Ragin Midden	Land-terrestrial	Eligible	2,4
8BR00144	No name	Precontact midden(s)	Insufficient Information	4
8BR00145*	Clark Slough	Precontact burial(s)	Eligible	6
8BR00146	No name	Land-terrestrial	Insufficient Information	6
8BR00147	No name	Precontact shell midden	Not evaluated	6
8BR00148	No name	Precontact midden(s)	Not evaluated	6
8BR00149	No name	Precontact midden(s)	Not evaluated	6
8BR00150*	Oyster Prong Creek Mound	Precontact mound(s)	Not evaluated	6
8BR00151*	No name	Precontact mound(s)	Insufficient Information	10
8BR00152	No name	Precontact midden(s)	Not evaluated	2
8BR00153	Pardon	Precontact midden(s)	Not evaluated	2
8BR00154	Eddy Creek	Precontact shell midden	Not evaluated	6
8BR00155	Granny Cove	Precontact shell midden	Potentially Eligible	2
8BR00156	No name	Precontact mound(s)	Not evaluated	4
8BR00157	Kars Park	Campsite (precontact)	Ineligible	4
8BR00158*	Penny Plot	Precontact burial(s)/ historic burial(s)/ homestead	Not evaluated	6
8BR00159	No name	Artifact scatter-low density (< 2 per sq meter)	Not evaluated	2

Site ID	Site Name	General Site Type	NRHP Status	psf Threshold
8BR00160	Black Point Midden	Precontact midden(s)	Not evaluated	2
8BR00161*	Cocoa Beach Mound	Possible mound	Not evaluated	4
8BR00167	Payne's Midden	Precontact shell midden	Not evaluated	6
8BR00169	South Access Road	Campsite (precontact)	Ineligible	6
8BR00170	Opposite Futch Cove	Precontact mound(s)	Eligible	10
8BR00171	Stony Island	Single artifact or isolated find	Not evaluated	4
8BR00175	Fort Ann	Historic fort	Not evaluated	2
8BR00183	Pardon Island	Precontact shell midden	Not evaluated	6
8BR00184	Widgeon Bay	Specialized site for procurement of raw materials	Not evaluated	4
8BR00185	No name	Specialized site for procurement of raw materials	Not evaluated	4
8BR00197	Brock	Farmstead	Ineligible	6
8BR00200	Saurwalt-Shipwreck	Ceramic scatter	Eligible	2
8BR00205	Max Hoeck Mound And Midden	Precontact mound(s)	Not evaluated	10
8BR00206	Pepper Hammock	Precontact mound(s)	Insufficient Information	20
8BR00207	Jones Point	Artifact scatter-low density (< 2 per sq meter)	Not evaluated	2
8BR00217	20th Century Historic Deposit	Artifact scatter-low density (< 2 per sq meter)	Not evaluated	6
8BR00219	No name	Subsurface features are present	Insufficient Information	10
8BR00221*	No name	Homestead	Eligible	6
8BR00222	No name	Campsite (precontact)	Insufficient Information	6
8BR00223*	Quarterman	Building remains/historic burial(s)/farmstead	Insufficient Information	6
8BR00224	No name	Land-terrestrial	Not evaluated	6
8BR00225	No name	Land-terrestrial	Not evaluated	4
8BR00226	No name	Land-terrestrial	Not evaluated	4
8BR00227	No name	Specialized site for procurement of raw materials	Insufficient Information	4
8BR00228	No name	Land-terrestrial	Not evaluated	4
8BR00229	No name	Campsite (precontact)	Ineligible	4
8BR00230	No name	Land-terrestrial	Ineligible	4
8BR00232	No name	Habitation (precontact)	Eligible	4
8BR00234	Old Lighthouse	Building remains	Not evaluated	4
8BR00235	Cloisters	Building remains	Ineligible	10
8BR00236	North Boundary	Habitation (precontact)	Not evaluated	10

Site ID	Site Name	General Site Type	NRHP Status	psf Threshold
8BR00237	Desoto Beach	Building remains	Ineligible	10
8BR00238A	Canaveral Town Site B	Building remains	Insufficient Information	4
8BR00238B	Canaveral Town Site C	Building remains	Not evaluated	6
8BR00238C	Canaveral Town Site D	Building remains/homestead	Insufficient Information	6
8BR00238D	Canaveral Town Site E	Building remains/homestead	Insufficient Information	6
8BR00239*	Stinktown And Jeffords	Building remains/historic burial(s)	Potentially Eligible	4
8BR00240	Hotel	Industrial	Not evaluated	4
8BR00240A	Hotel Site A	Other	Not evaluated	4
8BR00240B	Hotel Site B	Habitation (precontact)	Not evaluated	4
8BR00241	No name	Habitation (precontact)	Ineligible	6
8BR00243	Pier Road Houses	House	Not evaluated	4
8BR00243A	Pier Road Houses Site A	Habitation (precontact)	Not evaluated	4
8BR00243B	Pier Road Houses Site B	Building remains	Not evaluated	4
8BR00243C	Pier Road Houses Site C	Building remains	Not evaluated	4
8BR00243D	Pier Road Houses Site D	Variable density scatter of artifacts	Not evaluated	4
8BR00243E	Pier Road Houses Site E	Historic refuse / dump	Not evaluated	4
8BR00243F	Pier Road Houses Site F	Habitation (precontact)	Not evaluated	4
8BR00243G	Pier Road Houses Site G	Habitation (precontact)	Not evaluated	4
8BR00550	Savannahs, The	Artifact scatter-low density (< 2 per sq meter)	Not evaluated	4
8BR00551	Sunset Hill	Building remains	Ineligible	4
8BR00553	Horti Point	Precontact shell midden	Not evaluated	2
8BR00555	Eddy Creek Boat Launch Area	Habitation (precontact)	Not evaluated	6
8BR00556	Playalinda Beach Parking Area No. 8	Campsite (precontact)	Not evaluated	6
8BR00557	AREA 55-1	Habitation (precontact)	Not evaluated	4
8BR00558	AREA 55-2	Habitation (precontact)	Not evaluated	4
8BR00566	UWF 2 & 4	Campsite (precontact)	Not evaluated	4
8BR00572	UWF 10	Single artifact or isolated find	Not evaluated	2
8BR00582	Dune and Swale	Lithic scatter/quarry (precontact: no ceramics)	Ineligible	10
8BR00773	Vip West	Land-terrestrial	Ineligible	6
8BR00774	Astronaut Road	Campsite (precontact)	Eligible	6,10
8BR00909	East Max Hoeck Creek Midden/Cana 78	Specialized site for procurement of raw materials	Not evaluated	10
8BR00910	Scorching Machete	Campsite (precontact)	Ineligible	10
8BR00911	Happy Creek One	Campsite (precontact)	Ineligible	10
8BR00912	Rotten Dock	Campsite (precontact)	Ineligible	10

Site ID	Site Name	General Site Type	NRHP Status	psf Threshold
8BR00913	Landfill South	Campsite (precontact)	Eligible	6,10
8BR00914	LC 41 South	Campsite (precontact)	Eligible	10
8BR00915	TITUSVILLE BEACH WEST 1	Campsite (precontact)	Ineligible	20
8BR00916	Titusville Beach West 2	Campsite (precontact)	Ineligible	20
8BR00917	Gator Hole	Campsite (precontact)	Ineligible	20
8BR01608	Kars Park North	Campsite (precontact)	Ineligible	4
8BR01617	Dummit Place South	Artifact scatter-dense (> 2 per sq meter)	Ineligible	4
8BR01618	Minute Flake	Single artifact or isolated find	Ineligible	4
8BR01619	Dummitt Creek North Midden	Precontact shell midden	Eligible	4
8BR01620	Southeast Of Nauman's Place	Artifact scatter-low density (< 2 per sq meter)	Eligible	4
8BR01621	Granny Cove North	Artifact scatter-low density (< 2 per sq meter)	Ineligible	2
8BR01622	Allenhurst Midden	Precontact shell midden	Potentially Eligible	2
8BR01623	Duckroost Grove	Artifact scatter-low density (< 2 per sq meter)	Ineligible	2
8BR01625	Dike Access Road	Land-terrestrial	Ineligible	2
8BR01627	Patillo Creek	Single artifact or isolated find	Ineligible	2
8BR01632	Edgar/Campbell Midden	Precontact shell midden	Eligible	2
8BR01633	Apiary-53	Land-terrestrial	Insufficient Information	2
8BR01636	NS BR1	Campsite (precontact)	Not evaluated	6,10
8BR01637	NS BR 2	Habitation (precontact)	Not evaluated	6
8BR01638	NS BR 3	Habitation (precontact)	Not evaluated	6
8BR01639	NS BR 4	Building remains	Not evaluated	4
8BR01640	NS BR 5	Land-terrestrial	Not evaluated	4
8BR01641	NS BR 6	Land-terrestrial	Eligible	4
8BR01642	NS BR 7	Habitation (precontact)	Insufficient Information	4
8BR01659	Tea Hammock West	Campsite (precontact)	Ineligible	10
8BR01660*	New Lighthouse Site	Agriculture/ Farm structure/ building remains/ homestead	Ineligible	4
8BR01663	Orbiter Storage	Land-terrestrial	Ineligible	10
8BR01664	Archaic Surface Scatter Site	Land-terrestrial	Not evaluated	6
8BR01665	Old Canal Midden	Campsite (precontact)	Insufficient Information	2
8BR01666	Marsh Crossing Artifact Scatter Site	Land-terrestrial	Not evaluated	4
8BR01667	Thin Sand Ridge Site	Land-terrestrial	Not evaluated	4
8BR01668	Ceramic Surface Cluster Site	Land-terrestrial	Insufficient Information	4

Site ID	Site Name	General Site Type	NRHP Status	psf Threshold
8BR01669	Spoon Bill Site	Campsite (precontact)	Insufficient Information	4
8BR01670	Haulover Canal Midden	Building remains	Insufficient Information	2
8BR01671	Haulover Artifact Scatter Site	Land-terrestrial	Insufficient Information	2
8BR01672	Haulover Pond Midden Site	Campsite (precontact)	Insufficient Information	2
8BR01673*	Haulover Sand Mound And Midden (A,B)	Precontact mound(s)	Eligible	2
8BR01674	76th Street Nw Midden Site	Habitation (precontact)	Insufficient Information	2
8BR01675	Little Midden Point Site	Habitation (precontact)	Insufficient Information	2
8BR01677	Campbell/Jackson Sheet Midden	Land-terrestrial	Insufficient Information	2
8BR01678	Friable Sherds Site	Land-terrestrial	Insufficient Information	2
8BR01679	Diffuse Ceramic Scatter Site	Land-terrestrial	Insufficient Information	2
8BR01680	Relic Grove Site	Habitation (precontact)	Insufficient Information	2
8BR01695	Dr. Zoom	Land-terrestrial	Not evaluated	4
8BR01696	Sonic Boom	Land-terrestrial	Not evaluated	4
8BR01714	Sharpe	Land-terrestrial	Ineligible	2
8BR01715	Canal	Land-terrestrial	Ineligible	2
8BR01716	Carol And Nicole	Land-terrestrial	Ineligible	2
8BR01717	Tower 176	Land-terrestrial	Ineligible	2
8BR01718	Tower 180	Land-terrestrial	Ineligible	2
8BR01719	Carol And Nicole Site B	Land-terrestrial	Ineligible	2
8BR01779	Woodward's Flat	Habitation (precontact)	Not evaluated	2
8BR01845	Muntz Metal Shipwreck Site	Historic shipwreck	Not evaluated	10
8BR01850	Jerome Road Ridge/Bull Snake Ridge	Land-terrestrial	Not evaluated	4
8BR01854	Provost Site	Campsite (precontact)	Not evaluated	2,4
8BR01890	Sams Creek Site	Land-terrestrial	Not evaluated	4
8BR01891	McDonalds Island	River/Stream/Creek-riverine	Not evaluated	4
8BR01894	PPOF Site 1	Campsite (precontact)	Ineligible	4
8BR01895	PPOF Site 2	Campsite (precontact)	Ineligible	4
8BR01896	PPOF Site 3	Campsite (precontact)	Ineligible	4
8BR01897	PPOF Site 4	Campsite (precontact)	Ineligible	4
8BR01933*	Little Midden	Building remains	Eligible	4
8BR01935	Lone Cistern	Building remains/ farmstead/ homestead	Not evaluated	4
8BR01936*	Cabo Verde	Land-terrestrial	Ineligible	4
8BR01942	No name	Specialized site for procurement of raw materials	Not evaluated	2

Site ID	Site Name	General Site Type	NRHP Status	psf Threshold
8BR01943	Dogs Cross	Specialized site for procurement of raw materials	Not evaluated	2
8BR01944	Dead Mangrove Island	Specialized site for procurement of raw materials	Not evaluated	2
8BR01945	Scorpion Dike	Specialized site for procurement of raw materials	Not evaluated	2.4
8BR01946	No name	Specialized site for procurement of raw materials	Not evaluated	2
8BR01947	Bay Head Midden	Specialized site for procurement of raw materials	Not evaluated	2,4
8BR01948	No name	Specialized site for procurement of raw materials	Not evaluated	4
8BR01949	Long Shore Midden	Specialized site for procurement of raw materials	Not evaluated	4
8BR01950	No name	Specialized site for procurement of raw materials	Not evaluated	4
8BR01951	North Mangrove Midden	Specialized site for procurement of raw materials	Not evaluated	4
8BR01952	No name	Specialized site for procurement of raw materials	Not evaluated	4
8BR01953	Shell Dipper	Specialized site for procurement of raw materials	Not evaluated	4
8BR01954	No name	Specialized site for procurement of raw materials	Not evaluated	4
8BR01955	No name	Specialized site for procurement of raw materials	Not evaluated	4
8BR01956	Cut Corner Midden	Specialized site for procurement of raw materials	Not evaluated	4
8BR01958	No name	Specialized site for procurement of raw materials	Not evaluated	4
8BR01959	Canoer's Corner	Specialized site for procurement of raw materials	Not evaluated	4
8BR01964	Pritchard House	Campsite (precontact)	Not evaluated	2
8BR02029	False Cape Scatter	Land-terrestrial	Ineligible	10

Site ID	Site Name	General Site Type	NRHP Status	psf Threshold
8BR02052	Fac 1222 CZR Camera Pad U15R146	Building remains	Not evaluated	6
8BR02053	Fac 36900: GLOTRAC Site	Building remains	Not evaluated	4
8BR02054	Fac. 114-G: LC-25 Warning Horn Site	Building remains	Not evaluated	4
8BR02055	Facility 1212-CZR Camera Site U36R175	Building remains	Not evaluated	4
8BR02077	Sarah	Campsite (precontact)	Insufficient Information	10
8BR02078	Pace's Landing	Building remains/ homestead	Not evaluated	2
8BR02085*	Odyssey Street Remains	Precontact burial(s)	Not evaluated	4
8BR02087	Jupiter Missile Crash Site	Subsurface features are present	Eligible	4
8BR02160	FIM Van Site S-5	Building remains	Not evaluated	4
8BR02161	Facility 1209-Rate Antenna Pad A	Building remains	Not evaluated	4
8BR02165	Facility 289 - Flame Attenuation Site	Building remains	Not evaluated	4
8BR02166	James W. Merchant Homestead	Building remains/ farmstead	Not evaluated	4
8BR02167	Facility 1126: Telemetry ELSSE	Building remains	Not evaluated	4
8BR02174	Beach Trail	Specialized site for procurement of raw materials	Ineligible	4
8BR02175	97 Hammock	Land-terrestrial	Insufficient Information	4
8BR02229	Clifton Schoolhouse	Agriculture/ Farm structure/ homestead	Insufficient Information	2
8BR02243	Terryn Homestead	Homestead	Ineligible	4
8BR02246	Oyster and Pipe	Homestead	Not evaluated	10
8BR02256	Azusa Site	Building remains	Ineligible	6
8BR02276	Launch Complex 15 Theodolite Building	Building remains	Ineligible	6
8BR02314	Sherds in the Road	Land-terrestrial	Ineligible	4
8BR02315	Watermark	Habitation (precontact)	Ineligible	4
8BR02318	City of Vera Cruz	Historic shipwreck	Not evaluated	4
8BR02319	Fountain Shell Feature	Precontact shell midden	Ineligible	2
8BR02340	Halfway There	Land-terrestrial	Ineligible	6
8BR02341	Purple Glass	Homestead	Insufficient Information	4
8BR02343	Cape Point	Land-terrestrial	Ineligible	6
8BR02349	Artesian Well	Homestead	Ineligible	4
8BR02350	Cross the Line	Farmstead	Ineligible	4
8BR02351	Murray Parcel	Farmstead/ homestead	Not evaluated	4
8BR02364	Bottle Dump Site	Subsurface features are present	Ineligible	20

Site ID	Site Name	General Site Type	NRHP Status	psf Threshold
8BR02365	Fac. 1330B: Beat-Beat DOVAP 12-110-PLM	Building remains	Eligible	4
8BR02367	Camera Pad D44R53	Building remains	Ineligible	4
8BR02396	Fac. 1343: East Compass Rose	Building remains	Eligible	4
8BR02400*	Ulumay Lagoon	Precontact mound(s)	Not evaluated	2
8BR02412	Gallinipper Basin #1	Specialized site for procurement of raw materials	Not evaluated	6
8BR02413	No name	Specialized site for procurement of raw materials	Not evaluated	4
8BR02414	No name	Specialized site for procurement of raw materials	Not evaluated	4
8BR02415	No name	Specialized site for procurement of raw materials	Not evaluated	4
8BR02416	Gallinipper Basin #2	Specialized site for procurement of raw materials	Not evaluated	6
8BR02672	CANA-180	Specialized site for procurement of raw materials	Ineligible	4
8BR02673	CANA-181	Specialized site for procurement of raw materials	Ineligible	4
8BR02675	Cactus Island Midden (2311.07)	Specialized site for procurement of raw materials	Not evaluated	2
8BR02676	Harrier Midden (2311.08)	Specialized site for procurement of raw materials	Not evaluated	2
8BR02677	Kestrel Midden (2311.09)	Specialized site for procurement of raw materials	Not evaluated	2
8BR02678	Plover Midden (2311.10)	Specialized site for procurement of raw materials	Not evaluated	2
8BR02679	Turnstone Midden (2311.11)	Specialized site for procurement of raw materials	Not evaluated	4
8BR02680	Klondike Beach Tower Ruins (2311.12)	Building remains	Not evaluated	4
8BR02953	Sharpes Train Station	Land-terrestrial	Insufficient Information	2
8BR03047	QB-17 Crash Site	Aircraft Wreckage/Crash Site	Eligible	4
8BR03048	Old MacDonald's Farm	Farmstead/ homestead	Insufficient Information	2

Site ID	Site Name	General Site Type	NRHP Status	psf Threshold
8BR03050	River Shores	Building remains	Ineligible	2
8BR03076	TMDL Pond Site 1	Land-terrestrial	Ineligible	2
8BR03152	Clark Slough Earthwork	Precontact mound(s)	Not evaluated	6
8BR03176	Angy's Scatter	Farmstead	Ineligible	6
8BR03177	Atlas Debris	Land-terrestrial	Ineligible	6
8BR03178	Canaveral Rose's Garden	Specialized site for procurement of raw materials	Ineligible	6
8BR03273	The Walker Midden	Habitation (precontact)	Not evaluated	2
8BR03274	The Dunal Ridge Midden	Precontact mound(s)	Not evaluated	4
8BR03276	The Brent Russell Midden		Not evaluated	4
8BR03279	Beachside Midden	Precontact shell mound(s)	Not evaluated	2
8BR03335	Fac. 17200: Weather Theodolite Pad B	Building remains	Eligible	6
8BR03336	Fac. 1331: Telemetry ELSEE 12-110-PL	Building remains	Eligible	4
8BR03337	Fac. 1333B:Beat-Beat DOVAP 14-110-PLM	Building remains	Eligible	6
8BR03338	Fac. 1333A:Beat-Beat DOVAP 14-110-PR	Building remains	Eligible	4
8BR03339	Fac. 1334: Telemetry ELSEE 12-110-PRS	Building remains	Eligible	4
8BR03341	Facility 74610: Camera Pad	Building remains	Eligible	4
8BR03359	Cocoa Prison Site	Land-terrestrial	Ineligible	2
8BR03370	1-5 G13	Agriculture/Farm structure	Ineligible	4
8BR03371	8-5 E6	Homestead	Ineligible	6
8BR03372	15-9 A9	Aircraft Wreckage/Crash Site	Ineligible	4,6
8BR03373	18-7 G22/Lansing Beach School	Homestead	Ineligible	4
8BR03374	11-22.5 E20	Land-terrestrial	Ineligible	4
8BR03375	31-3 T6	Agriculture/Farm structure	Ineligible	6
8BR03376	10-3 G1	Homestead	Ineligible	6
8BR03379	17.5-11-E21	Land-terrestrial	Ineligible	4
8BR03380	32-1-E25	Land-terrestrial	Ineligible	4
8BR03381	31-6.5-E24	Homestead	Ineligible	4,6
8BR03390	Bronze Cannon Wreck	Saltwater submerged site	Not evaluated	6
8BR03534	Former NAA Control Tower Site	Building remains	Eligible	6
8BR03557	CR11	Habitation (precontact)	Ineligible	6
8BR03558	ICBM Concrete Pad	Building remains	Ineligible	6
8BR03560	Hurricane Irma Canoe	Log Boat - Historic or Precontact	Not evaluated	2
8BR03711	Luna Trails Site	Land-terrestrial	Ineligible	2

Site ID	Site Name	General Site Type	NRHP Status	psf Threshold
8BR03912	SCT 1	Campsite (precontact)	Insufficient Information	2
8BR03913	SCT 2	Campsite (precontact)	Insufficient Information	2
8BR03931	Thule's Rise	Campsite (precontact)	Insufficient Information	2
8BR03956	No name	Campsite (precontact)	Not evaluated	6
8BR03995	CCAFS LMU 87 Missile Crash	Land-terrestrial	Not evaluated	4
8BR03996	CCAFS LMU 142 Missile Crash Site	Land-terrestrial	Not evaluated	4
8BR03997	CCAFS Facility 1485 - Camera Pad Site (D)	Land-terrestrial	Not evaluated	4
8BR03998	CCAFS Facility 1430 - SHANICLE Building	Building remains	Not evaluated	4
8BR04001	No name	Land-terrestrial	Ineligible	10
8BR04002	No name	Subsurface features are present	Ineligible	10
8BR04003	No name	Land-terrestrial	Ineligible	10
8BR04004	No name	Building remains	Ineligible	10
8BR04005	No name	Land-terrestrial	Ineligible	10
8BR04006	No name	Land-terrestrial	Ineligible	10
8BR04007	No name	Land-terrestrial	Ineligible	6
8BR04008	No name	Campsite (precontact)	Ineligible	4
8BR04009	No name	Land-terrestrial	Ineligible	4
8BR04010	No name	Building remains	Ineligible	4
8BR04011	No name	Building remains	Ineligible	10
8BR04012	No name	Land-terrestrial	Ineligible	10
8BR04013	No name	Building remains	Ineligible	10
8BR04014	No name	Campsite (precontact)	Ineligible	4
8BR04185	CCAFS Facility 19110 Camera Site U142L62	Land-terrestrial	Ineligible	6
8BR04188	CCAFS LMU 53 Concrete Pads	Building remains	Ineligible	6
8BR04189	CCAFS LMU 61 Concrete Remains	Building remains	Ineligible	6
8BR04190	Camera Road E Artifact Scatter	Land-terrestrial	Ineligible	6
8BR04221	Cocoa Hill	Land-terrestrial	Insufficient Information	2
8BR04231	Whaley's Farmstead	Farmstead	Ineligible	4
8BR04364	The Granite Rock Homestead	Building remains	Ineligible	4
8BR04368	Site One	Saltwater submerged site	Not evaluated	6
8BR04369	Site Two	Saltwater submerged site	Not evaluated	6
8BR04370	Site Three	Saltwater submerged site	Not evaluated	6

Site ID	Site Name	General Site Type	NRHP Status	psf Threshold
8BR04371	Site Four	Saltwater submerged site	Not evaluated	6
8BR04442	Wydra Canoe	Log Boat - Historic or Precontact	Not evaluated	2
8BR04532	██████████ Homestead	Building remains	Not evaluated	4
8BR04579	Surface Scatter 1	Land-terrestrial	Ineligible	4
8BR04656*	Klondike	Land-terrestrial	Not evaluated	2
VO09281	Teal Midden (2311.02)	Specialized site for procurement of raw materials	Not evaluated	2
VO09282	Mallard Midden (2311.03)	Specialized site for procurement of raw materials	Not evaluated	2
VO09283	Preacher's Island (2311.04)	Specialized site for procurement of raw materials	Not evaluated	2
VO09284	Merganser Midden (2311.05)	Specialized site for procurement of raw materials	Not evaluated	2
VO09285	Caracara Midden (2311.06)	Specialized site for procurement of raw materials	Not evaluated	2
VO00151	Cat Hammock	Precontact shell midden	Not evaluated	2
VO00158	No name	Precontact shell midden	Not evaluated	2
VO00159	Vann's Island	Precontact shell midden	Not evaluated	2
VO06786	Kuhl Midden	Habitation (precontact)	Eligible	2
VO08885	Target Rock	Land-terrestrial	Not evaluated	2
VO08977	Vann's Slough Midden	Specialized site for procurement of raw materials	Not evaluated	2
VO08978	Northwest of Vann's	Specialized site for procurement of raw materials	Not evaluated	2

*Human remains are potentially present



